

FOCUS

August/September 2022



Eaton Bray, Edlesborough, Northall & Dagnall
Focus is online at www.thefocusmagazine.co.uk



EXPERTISE, QUALITY & EXPERIENCE
EST 2003

Car Bodyshop, Service Workshop & MOT Bay



MOT TESTING
FOR ALL MAKES & MODELS

4 WHEEL ALIGNMENT
& TYRE FITTING

SPECIALISTS IN COMPLETE
CLASSIC CAR RESTORATION

DEALER TRAINED TECHNICIANS

EXTENSIVE EXPERIENCE IN
PRESTIGE CAR PAINTWORK & REPAIR

ACCIDENT & VANDALISM DAMAGE

INSURANCE WORK UNDERTAKEN

MOBILE BODY REPAIRS
ALLOY WHEELS - DENTS - BUMPERS
CHIPS - SCRATCHES - SCUFFS

Fully equipped vans that come
to your home or office

FREE COLLECTION & DELIVERY
LOAN CARS AVAILABLE



01582 664772 www.smartautomotive.co

Smart Automotive, Units 17 & 18 Icknield Way Farm, Tring Road, Eaton Bray LU6 2JX

SMART AUTOMOTIVE IS THE TRADING NAME OF SMART TOUCH (MK) LIMITED

NORTHALL BAPTIST CHAPEL

Chapel Lane, Northall

(just beyond the 30 speed limit signs on the road towards Leighton Buzzard)

Everyone is welcome to our Sunday worship each week between 11am and 12.30pm including tea/coffee and time to talk together.

For more information contact:

John Hazell 01525 218142

Email northallchapel@btinternet.com

Web: www.northallbaptistchurch.org

There has been a Baptist Chapel in Northall for more than 200 years. Today we continue to seek to worship God, serve him in our daily lives and support and encourage one another in the difficult and the joyful times.

The Focus Magazine Committee

Editor: Sally Siddons 01525 221733

34 Wallace Drive, Eaton Bray

Email: sallysid@hotmail.com

Business Advertising: Sally Taylor, Butler's

Folly, South End Lane, Northall LU6 2EX

01525 221576 & Angela Dunford 221944

Email advertising@thefocusmagazine.co.uk

Chair: Ken Coates

10 The Nurseries, Eaton Bray 220868

Circulation Manager: Angela Dunford

1 Knolls View, Leighton Road, Northall

01525 221944, angela.dunford29@gmail.com

Treasurer: Steve Dunford, 01525 221944

Committee Member: Sue Tucker, 01525

223004, susantucker053@gmail.com

Design and Layout: Tracey Moren
(Moren Associates Limited) 01525 229695

Printed by: Prioxy Press

Dunstable 01582 699851

Copy for publication to the Editor by the

10th of the month

Focus accepts no responsibility as to the accuracy or content of any advertising or articles published in 'this' magazine, neither do they reflect the opinion of members of the Committee.

© Articles published in Focus may not be reproduced without permission.

Focus would like to remind contributors that the deadline for articles is the 10th of the preceding month

Kindly Note

If the event you wish to advertise falls in the first week of the month, it is advisable to get the details into Focus a month earlier. The magazines are not delivered from the printers until the first of the month, therefore it takes a few days for them all to be circulated throughout the village.

≠Editor

Coffee Tavern



Large Hall £10.00 per hour

Commitee Room £5.00 per hour

Large Hall & £15.00 per hour
Commitee Room

Bookings 07836240467

Stairlift, access ramp and free WiFi available

Focus is online at www.thefocusmagazine.co.uk

Village Diary



Weekly

- Mon-Sun St. Mary's Edlesborough is open most days 10am-4pm, sometimes longer.
Look for the OPEN sign below the notice board
- Mon-Fri (term) Eaton Bray Pre-school, Eaton Bray Lower School, 01525 220468, admin@eba.ec
- Mon-Fri (term) Dagnall Under 5's, Dagnall Village Hall, 9.15am - 12.15pm, Mrs Ann Tobin 07816 358342
- Mon-Fri (term) Edlesborough Primary Academy Pre-School, 01525 220431, epamanager@epa-primary.org
- Mon-Fri (term) Totternhoe Pre-school, Totternhoe CE Academy, 01582 662959, totternhoeoffice@tot.dsamat.co.uk
- Mondays Pilates, 10.45am, Totternhoe Memorial Hall, Lisa: 07832 230774
- Mondays Dagnall Community Choir, All Saints Church 7.45-9.45pm, w:dagnall-community-choir.co.uk
- Mondays (term) Movement and exercise classes with a dance flavour, Northall VH 2-3.30. Jan 01442 864271.
- Mondays Curtain Call Youth Theatre 5-7.30pm, Eaton Bray Village Hall, Gavyn 01525 220525
- Mondays Curtain Call Theatre Group, 7:30-10:30pm Eaton Bray VH, Sheila sdtwinkletoes@yahoo.co.uk
- Mondays KFFPA ISTD ballet classes, Edlesborough Memorial Hall 4pm-6.30pm (4years+)
- Mondays Contact Kiri 07988161043 or visit Facebook page 'KF PerformingArts/KFFPA' for info
- Mondays Cubs (8-10½ years old), 6.30pm - 8pm, 1st Eaton Bray & Edlesborough Scout Hut, High Street, Edlesborough. Contact Liz Coates 01442 842550
- Mondays Yoga, 6:45pm, Edlesborough Memorial Hall, contact 07837 727302
- Mondays Barre, 8pm, Edlesborough Memorial Hall, contact 07837 727302
- Mondays Eaton Bray Tennis Club - 4-7pm mini / junior tennis coaching
- Mondays Eaton Bray Tennis Club - 7-8pm Adult Coaching 'Get Back Into Tennis'
- Tuesdays Pilates, 10-11am, Eaton Bray Village Hall, Nicky Roussou 07861 162680
- Tuesdays Totternhoe Baby & Toddler Group, 9.30-11.15am, St. Giles Church Hall, Ruth Allen, 01525 222468 or 07796 265174 or email ruthallen002@gmail.com
- Tuesdays Tap & Ballet Classes, JoAnn Latus School of Dance, 4-8pm, Eaton Bray VH, 07800 518654
- Tuesdays Coffee Morning, Bring & Buy, Table Top Sale, 10-11:30am, Salvation Army Hall, Booth Place, Eaton Bray
- Fortnightly Keep Fit class, Edlesborough Memorial Hall 11 - 12noon
- Tuesdays Jazzercise 9:15-10am, Eaton Bray VH, Annis, annisjazzercise@gmail.com 07447 409666
- Tuesdays 12-3pm, Chiltern Art Club, St Giles Church Hall, Totternhoe, Contact 01582 607315/872115
- Tuesdays Eaton Bray Tennis Club - 6-7.30pm Social play for all adults
- Wednesdays Pilates, 8pm, Northall Village Hall, Lisa: 07832 230774
- Wednesdays Northall & District Age Concern Wednesday Club, 10am - 3pm, Northall Village Hall, Contact Anna on 07854 230243
- Wednesdays Art Course online 9.30 -11.30 am, contact Lorna Moore 07896 619660
- Wednesdays Art Course, Bellows Mill Eaton Bray, 2-4.30pm, contact Lorna Moore 07896 619660
- Wednesdays Jazzercise 7:30-8:30pm, Eaton Bray VH, Annis, annisjazzercise@gmail.com 07447 409666
- Wednesdays Eaton Bray Tennis Club - 5-6 pm 9-11 years old tennis coaching & U16 Beginners tennis
- Thursdays KFFPA Street dance classes, Edlesborough Memorial Hall 4.15pm-6.30pm (4 years+)
- Thursdays Contact Kiri 07988161043 or visit Facebook page 'KF PerformingArts/ KFFPA' for info
- Thursdays Tae Kwon-do, Dagnall Village Hall, 5.45-7.30pm 07813 755785
- Thursdays Beavers (6 to 8 years old), 6.15-7.30pm, 1st Eaton Bray & Edlesborough Scout Hut, High Street, Edlesborough. Contact: ebebeaverleader@ebescouts.co.uk
- Thursdays Explorers Scouts (14-18 years old), 8pm-9.30pm, 1st Eaton Bray & Edlesborough Scout Hut, High Street, Edlesborough. Contact Simon Betts, simon_betts@hotmail.com.
- Thursdays Eaton Bray Methodist Church Social Afternoons, 2 - 4pm, All Welcome
- Thursdays Retro Line Dance Class. 11.15am to 12.45pm. Eaton Bray Village Hall. Beginners welcome. www.jukeboxjunction.co.uk info@jukeboxjunction.co.uk 07864212171
- Thursdays (term) Vinyasa yoga, 7:30-8:30pm The Coffee Tavern eleanorlangton@outlook.com 07969 315384
- Fridays Tap & Ballet Classes, JoAnn Latus School of Dance, 4-8pm, Eaton Bray VH, 07800 518654
- Fridays Jazzercise 9:15-10am, Eaton Bray VH, Annis, annisjazzercise@gmail.com 07447 409666

Village Diary

- Fridays Stay & Play toddler group, 'Musical Monkeys' at the Eaton Bray Village Hall, 10-11.30am, £4.50 for one adult and child, £1 for extra children/adults, 0-6 months free
- Fridays Scouts, (10½ to 14 years old), 7.00-8.30pm, 1st Eaton Bray & Edlesborough Scout Hut, High Street, Edlesborough. Contact Mark Owen, ebescoutleader@ebescouts.co.uk, 07899 892344
- Fridays "Little Luvvies" baby ballet classes, 10am-11.30am, Northall Village Hall. Contact Emma Whittemore on 01525 376124
- Saturdays Jazzercise 9-10am, Eaton Bray VH, Annis, annisjazzercise@gmail.com 07447 409666
- Saturdays KFFPA Musical theatre classes, Edlesborough Memorial Hall 9.30-10.30am (4years+)
Contact Kiri 07988161043 or visit Facebook page 'KF PerformingArts/ KFFPA' for info
- Sundays Sunday Worship at 11am, Edlesborough Baptist Church, Moor End, LU6 2FL. Contact: 01525 222064 or edlesboroughbaptistchurch@gmail.com
- Sundays Yoga, 9:30am-10:30am, Edlesborough Memorial Hall, contact eleanorlangton@outlook.com or 07969315384
- Sundays Karate for kids & adults, 2:30-4pm & 4:30-6pm, Eaton Bray VH, Contact 07500 007779
- Sundays Eaton Bray Tennis Club - 10am -12pm Social play for all adults

Monthly

- 1st Monday Eaton Bray Parish Council Meeting, 7.30pm, The Coffee Tavern (except Jan-2nd Monday)
- 1st Monday Eaton Bray W.I. Meeting, 7.30pm. Eaton Bray Methodist Church Hall. Contact Margaret Jones on 01525 220991
- 1st & 3rd Tues Dunstable & District Orbit (social and charitable) Club meet at Dunstable Rugby Club at 8pm. For details contact 01525 222441 or 01582 755147
- 1st Saturday St. Mary's Church, Eaton Bray Coffee Morning, 10:30am - 12 noon (July held on 2nd Saturday)
- 1st Saturday St Mary's Book Swap, 10:30am -12 noon (July held on 2nd Saturday)
- 2nd Monday Film Society, Sep to May, 2pm, Eaton Bray Village Hall, Graham Chappell 01525 220883
- 2nd Tuesday Dunstable & District Local History Society meeting, 7.45pm, Methodist Church Hall, Dunstable
- 2nd Tuesday Edlesborough W.I. Meeting, 7.30 pm, Edlesborough Memorial Hall. Contact Sue Bingham 01525 222522
- 2nd Wednesday St.Mary's Ladies Guild, 2pm, St.Mary's, Eaton Bray
- 2nd Wednesday Eaton Bray & Edlesborough Lions Club, 7.30pm, The Coffee Tavern
- 2nd Saturday Workshops Dynamic Yoga 9.30-11am £10 Eaton Bray Coffee Tavern, Keira 07936 693696
- 2nd Saturday Cafe Community, 11am-1pm, Eaton Bray Methodist Church,, October to May only
- 3rd Thursday Edlesborough Parish Council Meeting, 7.30pm, Memorial Hall
- 2nd Friday Leukaemia Research Coffee Morning 2, Dunstable Road, Dagnall 10.30 a.m. all welcome. No meeting in September, June plant bring and buy, December Sherry & mince pies
- 3rd Sunday Lunch club 11.30 to 2.00pm, Eaton Bray Village Hall, Chris Hewitt 222288
- Last Saturday Coffee Morning, 10:00-12 noon, Edlesborough Methodist Church

This Month's One Off/Annual/Irregular Events

- 1st-19th Aug Eaton Bray Lawn Tennis Club Summer Camps. Book www.ebltc.org.uk
- 2nd & 9th Aug Messy Church, 10:30am-12:30pm, St. Mary's Church, Eaton Bray
- 3rd Aug Northall Age Concern Wednesday Club AGM, 2pm, Northall Village Hall
- 28th Aug Messy Sunday, 10am, St. Mary's Church, Eaton Bray
- 10th Sep St. Mary's church, Eaton Bray Heritage Open Day 2-5pm
- 10th Sep Dagnall Community Choir - A Musical Celebration, 7:30pm, Eaton Bray Village Hall, £10, Box Office: 01525 220189
- 16-18th Sep All Saints Dagnall Flower Festival, Friday 7-9pm £10, Saturday 10am-5pm £3, Sunday 12-5pm £3. For more details contact Barbara Morton on 01525 852368
- 23rd Sep Macmillan World's Biggest Coffee Morning, 10am-12 noon, St Mary's Eaton Bray
- 23rd Sep Northall Age Concern Harvest Festival Auction, 7:30pm, The Swan, Northall



The paper used for this magazine is sourced from sustainable forests and can be recycled



**WORLD'S BIGGEST COFFEE
MORNING**

COFFEE, CAKES AND MORE

FRIDAY

23rd SEPTEMBER

ST MARY'S CHURCH, EATON BRAY

10.00 TILL MIDDAY

EVERYONE WELCOME. PLEASE COME AND SUPPORT US.

Fundraising for

**MACMILLAN
CANCER SUPPORT**

Village Info



EDaN Community Transport
Peter Williams: 01442 842506

Village Hall Booking Contacts

Northall: Lorna Cabbage Tel: 07857 318696 www.edlesborough-pc.gov.uk/nvh

Email: northallvhbookings@gmail.com

Eaton Bray: Norman Lee Tel: 07975 797202

Email: bookings@ebvh.co.uk Website www.ebvh.co.uk

Dagnall: Bev Way 07875 462128 & Trish Owen 07762 151364

Email DVH_Bookings@outlook.com

Edlesborough Memorial Hall: Penny Pataky, Tel: 01525 229358

Email: manager@edlesborough-pc.gov.uk

Police Contact Numbers...

making neighbourhoods safer together

General Assistance (Recommended Number): 101 Emergency: 999

Bedfordshire Police (Eaton Bray)

Leighton Buzzard Police Station/Kathryn Horgan: 01582 473411

Typetalk: 18001 01582 473418

Email: LPT.LeightonBuzzardLinslade&Rural@bedfordshire.pnn.police.uk

Thames Valley Police (Edlesborough, Dagnall & Northall)

PCSO Jackie Dodson

Email: greatbrickhillwingivinghoenhpt@thamesvalley.pnn.police.uk

Defibrillator Locations

These units are registered with the Ambulance Services. To access them, please phone 999. You will be given the access code and the location of the unit will be confirmed. The defibrillator is easy and safe to use. The units can be found on the outside walls of the following locations:



Dagnall: Red Lion Public House & Munns Farm Shop

Eaton Bray: The Coffee Tavern

Northall: The Swan Public House

Edlesborough: Edlesborough Memorial Hall & Baptist Church, Summerleys



Helpline: 07930 987064

Manned phone hours:

9am to 5pm, Monday to Friday

(An answering service is available for out-of-hours calls)

Call us if you want help with getting to the surgery/hospital, collecting prescriptions, minor errands or d-i-y jobs, form-filling, walking your pet, on-line shopping support etc. or if you would welcome our befriending service.

We help people of Eaton Bray and adjacent villages

Eaton Bray with Edlesborough Parish News

Vicar: Rev'd Joy Cousins

The Vicarage, 11 High Street, Eaton Bray - Tel: 01525 220261

Associate Priest: Rev'd Stephen Burge

Church Warden & Pastoral Matters: Catherine Hayden (01525 220527)

Reader: Gordon Gray (01525 220136)

Website: www.stmaryseatonbray.org.uk Facebook: St Mary's Eaton Bray

As I write this letter for *Focus*, we are in the middle of the July heatwave, which I hope when you are reading this is long and distant memory! Such prolonged heat, with such little rain has a huge impact not just on us but on the whole of creation – flowers and plants are struggling to grow, the soil is becoming dry and parched, and animals are finding it harder to find food. I think it reminds us all that while we may dislike the rains of autumn, and in the depths of winter we yearn for the warmth of summer, the rain is an essential part of how our world and everything within it thrives. We need both rain and sun for life to flourish. There are, of course, many places around the world which experience this kind of heat and drought on a regular basis, and it is impossible to imagine what having to endure such hardship must be like. There are many charities like WaterAid, Cafod and Christian Aid that go out into communities to help improve people's access to water, both to drink and to help irrigate crops. I encourage you all to think about supporting any of these charities, if you have felt it hard over the heatwave.

This summer heat has also made think of the beauty of the natural world and especially flowers. I am sure that we all have a favourite flower; something that really speaks to us – I know that I have a particular fondness for tulips. There is something very special about a flower, the way they are both strong and delicate – they are able to hold such complex forms and shapes, but are also so vulnerable to the world around them. We are like that too – we are wonderful, complex beings, but also so susceptible to the world around us too – like plants we need nourishing and tending and care to grow and to thrive. In the Parable of the Sower Jesus tells the story of a man who casts seeds into the earth, but some fail to grow because they are in hard, dry soil, or on the path, and that it is only the seeds that land in the good soil that grew. We all need nurturing, just like those seeds. We all need to find the best place to be that makes us the best people that we can be. We all need to be watered and fed by those around us. Then, and only then, will we grow and be beautiful like the flowers.

All this talk of flowers, reminds me of an event that is taking place at All Saints' Dagnall, during the weekend of the 17th-18th September. All Saints' will be holding a Flower Festival, where you will be able to see a range of different displays of flowers, from the traditional to the modern. Refreshments will also be available and during the Flower Festival with a service Holy Communion among the flowers at 10.30am and will end the festivities with a service of Songs of Praise at 5pm. It would be great to see you there. But more importantly, I hope that you get an opportunity to see the beauty of flowers, and see how wonderfully they are made, and then remind yourself

that you are wonderfully made too. I hope you feel empowered by that thought and that you can be reminded of all the good things that you can do to the world around you and all the people around you whom you can inspire and nurture. Amen



✉ Rev'd Stephen Burge

Services at St Mary's Church

SUNDAYS : 10.00am PARISH HOLY COMMUNION
On First and Third Sunday of each month:
8.00am HOLY COMMUNION
On Third Sunday of each month:
10.00am WORSHIP FOR EVERYONE a shorter, less formal service.

WEEK-DAYS: Wednesday: 10.00am Holy Communion
EVERYONE WELCOME AT THESE SERVICES.
DETAILS AND ONLINE WORSHIP: www.stmaryseatonbray.org.uk

In light of the current Coronavirus situation the Pastoral Care Team at St. Mary's, Eaton Bray welcomes your assistance in identifying any of our parishioners who might be sick or otherwise benefit from their support during this challenging time. Please contact us at admin@stmaryseatonbray.org.uk in this regard.

Dagnall Church Services



The All Saint's Dagnall Sunday service is at 10.30am on the 3rd Sunday of each month.
All welcome.

We encourage people to wear a face covering.

Any queries please contact Phillip Lee on 07977234453.

Dagnall Church, Ringshall Road HP4 1RL

Edlesborough Baptist Church

All are welcome to our 11am service every Sunday

Keep up to date by visiting:

www.edlesboroughbaptist.wix.com/home

Find us on Facebook @gbce2014



**DAGNALL
COMMUNITY CHOIR**

Presents

**A Musical
Celebration**

Saturday 10th September

7.30pm

Eaton Bray Village Hall

Tickets £10.00

to include a glass of wine or soft drink

Available from Box Office on 01525 220189

or email dagnallcc@gmail.com



UNICORN

WINDOWS LTD

UNIT 3 YOUNGS INDUSTRIAL ESTATE
STANBRIDGE ROAD, LEIGHTON BUZZARD
BEDS LU7 4QB



YOUR LOCAL HOME IMPROVERS

- ✓ DOORS; COMPOSITE, ALI AND UPVC
- ✓ CONSERVATORIES
- ✓ ORANGARIES AND GLAZED EXTENSIONS
- ✓ CAT FLAPS/DOG FLAPS
- ✓ BI-FOLD DOORS
- ✓ PORCHES
- ✓ CLADDING
- ✓ REPAIRS - INCLUDING REPLACEMENT GLASS

- ✓ WINDOWS; UPVC AND ALUMINIUM
- ✓ SOLID ROOF / ROOF CONVERSIONS
- ✓ CONSERVATORY REFURBISHMENTS
- ✓ SOFFITS, FASCIAS AND GUTTERING
- ✓ LANTERN ROOFS AND SKYPODS
- ✓ FLUSH SASH WINDOWS
- ✓ SLIDING DOORS
- ✓ AND MORE..





10 YEAR WARRANTY







CONTACT US

FOR MORE INFO OR TO ARRANGE YOUR FREE, NO OBLIGATION QUOTE

01525 854272

sales@unicornwindows.co.uk








Moren Associates
Technology Services

Technology Support for Home and Business

Onsite or Remote Support

PCs, Smartphones, Tablets, Printers

Broadband, Internet, WiFi, Email

Security Guidance

Virus Protection & Removal

Upgrades & Installations

Data and System Recovery

Hardware & Software Troubleshooting

Home & Office Network Setup & Support






01525 229695 or 07950 597962

support@morenassociates.co.uk

Free initial consultation

Problem Solving:

Virus & Spyware Removal
Internet & Email Assistance
Fault Diagnostics
Repairs & Upgrades
Slow Running PC's

Services:

PC & Mac Support
Wired & Wireless Networks
Data Recovery
Install & Set-up
Health Checks

On-site Visits:

Office Hours &
Evenings - by appointment

Sales:

Desktops, Laptops & Tablets
Printers & Peripherals
Software

For friendly advice call John Wallace

07968 536068 or 01525 261381

Email: john@computamation.co.uk

Web: www.computamation.co.uk

9a Lower Way, Great Brickhill, Buckinghamshire. MK17 9AG

**Computamation
Services Ltd
Established. 1999**

"Excellent experience. I nearly fell asleep whilst having my fillings done! Very reassuring - no rush. I was made to feel completely at ease. Thank you!"
- R.R



Edlesborough Dental Practice



floss and smile
gentle dentistry



"Without doubt the most competent, gentle & lovely dentist in the Northern hemisphere! I won't see anyone else. Thank you from a nervous patient."
- M.B.

Edlesborough Dental Practice

Telephone: 01525 223175

11 Cow Lane, Edlesborough, LU62HT

www.flossandsmile.co.uk

Get the Beautiful Smile You Deserve!

EMERGENCY TEXT TO : 07590035899



The Clear Alternative to Braces



Implants

General Family Dentistry *Crowns *Bridges *Dentures *Smile Makeovers

*Tooth Whitening *Tooth straightening *Implants *Botox

*Hygienist *Sedation *0% Finance



Dentist :
Dr A. Johar
GDC number : 111350

Hygienist:
Mrs Jane Shrowder
GDC number : 2344



For all your painting & decorating requirements
 Domestic and Commercial
 call Max for a free estimate with no obligation
maxbro@btinternet.com

DEEP CLEAN

Simply the BEST Carpet & Upholstery
 cleaning you can get

- The most modern, up-to-date equipment
 - Hot Water Extraction
 - Stain Removal Service
- Most of my work is recommendations or repeat business
- I carry my own water and remove all waste water
- Commercial, Industrial and residential Carpet & Upholstery Cleaning service

Please Call Darren Batchelor for a free quotation on:

**01525 851 811 or
 Mobile 07790 034818**

Email : sales@deep-cleaners.co.uk
 Website : deep-cleaners.co.uk

Approved Prochem Trained

N.D.S. General Building and Plumbing

Kitchens and Bathrooms:-
 Design + Supply or just Installation
 All aspects of building work and
 property maintenance undertaken
 Can also replace steamed up/misty

Double Glazing

Please call Neil Scott:-

07946 626 564 / 01525 221470

For Free Estimate. All work considered

No job too small
 (30+ Years Experience)

Barry Cato Motor Repairs

Est. 1981

Servicing, repairs and MOT's arranged

Workshop at:

r/o Norfolk House Farm, Harling Road
 Eaton Bray, Dunstable, Beds, LU6 1QY

Tel: 01525 221681 (workshop)

07836 650015 (mobile)

David John Harris



Green Fingers



(Established 1992)

All Fencing Work • All Gates • Paving • Patios
 Driveways • Shingle • Hedge Setting and Cutting
 Grass Cutting • Turfing Specialist • Exterior
 Painting Service • Sheds Small Building Work
 Trees & Shrubs Supplied

Tel/Fax: 01525 221745

Mobile: 07889 143713

Dominic Woolcott

Painter & Decorator



- Internal & External
- Plastering & Coving
- Insurance Work
- 20 Years Experience
- Competitive Rates

**For a professional job call:
01525 229682 or 07747 042879**



STRUCTURAL ENGINEERING | ARCHITECTURAL SERVICES

Comprehensive design service for Building and Construction

- Architectural & Structural Designs
- Extensions • Alterations • Loft Conversions • Defects and Repairs
- Planning Permission • Building Regulation Consents • Listed Building Consents

Village Based | Established 33 years
01525 222462 | 07845 950594 | Also in Tring

P. DYER ELECTRICAL

For all your Electrical & Testing & Inspection needs

- All Testing & Inspection
- Rewires
- Security Systems/Lighting
- LED & Low Energy Lighting
- CCTV Systems
- PAT Testing
- Fuse Boards
- Fault Finding/Repairs

Fully insured, Part P registered, all work guaranteed. Fast, friendly and reliable local electrician. For a free, no-obligation estimate, call Paul on:



Tel: 01525 222109

Mobile: 07850 682815

www.pdyerelectrical.co.uk



Lee Hutt
Heating & Plumbing Services

Bathrooms
DESIGN & INSTALLATION

TILING

HEATING

TAPS

Leaks

CALL OUTS

Free Estimates

01525 222145 07971 559185

Patricia's Cuisine
Catering For All Occasions

- Buffets, Dinners
- Christenings, Weddings, Funerals
- Promotions & Business Lunches

For Enquiries & Menu

Meadside Farm, 104 High Street,
Eaton Bray, Bedfordshire, LU6 2DP

Telephone: 01525 222174
www.patriciascuisine.co.uk

Anne Johnson Osteopath
6 Moor End, Eaton Bray

Back, neck and joint pain
Postural tension and headaches
Arthritic and other muscle and joint problems

07957 250682
Book by phone or online
www.anne-johnson.net



Steve the Mower Man

Steve Johns
 All mowers and garden machinery
 repaired and serviced
 Collection and delivery available
07720 828166

Will Kimberley
Garden Services
01442 255784

Phone for a free no obligation written estimate
wkgardenservices@btconnect.com

- High hedges a speciality
- Fences erected and repaired
- General garden tidy up's
- In fact any job in the garden!

GRASS ROOTS
GARDEN MAINTENANCE

TREE SURGERY, HEDGE PRUNING,
 SELECTION SUPPLY AND PLANTING OF
 TREES, SHRUBS AND HEDGES.
 REGULAR MAINTENANCE/ONE-OFF JOBS
 (Fully Insured)
Brian McMahon NCH (Arb)
01525 221960

S M Reilly & Son Ltd
General Builders & Contractors
 Turning Your House into
 a Home Since 1987



All aspects of the building trade undertaken

- *Extensions*Hard Landscaping*
- *Windows, Doors & Conservatories*
- *Fitting of Aluminium Bi-fold Doors*
- *Kitchen & Bathrooms*Drives*
- *Loft Conversions*

01525 221740 07970 637511

Flicks & Bangs
 HAIR SALON

A warm, friendly salon offering a wide range of bespoke hair services for all the family. Feel free to pop in for a complimentary consultation.

www.flicksandbangs.com

Flicks & Bangs
 66 High Street
 Eaton Bray
 Nr. Dunstable
 Beds LU6 2DP
01525 221252

Opening Hours

Mon	Closed
Tue	9 am - 5 pm
Wed	9 am - 5 pm
Thu	9 am - 8 pm
Fri	9 am - 6 pm
Sat	8 am - 4 pm
Sun	Closed



01525 851080 .CO.UK 07973 167779

ALL TYPES OF SIGNS
VEHICLE SIGNS & MAGNETICS
BOARDS & BANNERS
STICKERS
BUSINESS CARDS
PRINTED & EMBROIDERED
CLOTHING

12 HARMILL IND EST LEIGHTON BUZZARD LU74FF

!AMAZING New Website!
www.pinstripes1995.co.uk

Join us on Facebook – **PINSTRIPES 1995**

WASHING MACHINE REPAIRS

ALSO
DISHWASHERS, TUMBLE DRIERS,
AND ELECTRIC COOKERS



Call
ANDERSON D.R.S.

01582 665764

www.andersondrs.co.uk
SALES AND RENTALS AVAILABLE

Established over 20 Years

DUNCAN TOMBLIN **TREE SURGEON**

Forestry Contractor • Tree Felling
Crown Reduction & Thinnings
Deadwooding • Hedge Cutting
Stump Grinding • Site Clearance
Private Agriculture Fencing Contractor
Chipper & Stump Grinding Hire
Digger Hire

FULL PUBLIC LIABILITY INSURANCE
FREE ESTIMATES

'The Best Choice For Your Tree'

TEL: (01525) 221946
MOBILE: (07802) 410728

12 Greenways, Eaton Bray, Beds

For a top quality
decorating job call

Marc Flack

01442 842639 (Dagnall)

Trading locally for over 15 years
References are available.



Eaton Bray Academy

Visit our school website to find out more about us, watch our virtual school tour or arrange a socially distanced visit.

We have availability for pupils from the term after they turn two to Year 6.

Tel: 01525 220468

Email: admin@eba.ec

www.eatonbrayacademy.co.uk





Come and join us for Messy Summer

There will be craft activities,
games, outdoor fun,
stories and singing at our
Summer Messy Church mornings



Tuesday 26th July, 2nd August, 9th August

10.30am – 12.30pm

Please bring a picnic to join us for lunch



All primary school age children & toddlers
with parents, grandparents or carers
are welcome

Then, please join us for Messy Sunday

28th August, at 10.00am

and show everyone what we did!

AWARD WINNING THEATRE GROUP



ARE YOU BONKERS?

GREAT! YOU ARE JUST WHAT WE ARE LOOKING FOR!

AGED BETWEEN BIRTH AND DEATH...? PERFECT, YOU QUALIFY!!!

AFTER 2 BORING YEARS WE COULD ALL DO WITH SOME EXCITEMENT!

WHO?

Your local, crazy and friendly theatre group are looking for fun-loving people to join us on our next adventure...

WHAT?

Can you sing, dance or act?
Don't worry if you can't... neither can most of us. However, if you can that's a bonus. Wanting to have fun is our priority!

WHERE?

We return on Monday 5th September at 7pm at Eaton Bray Village Hall. So come along and find out what we are all about!

REGISTER AT WWW.CURTAINCALLTHEATREGROUP.CO.UK





**North Buckinghamshire
Primary Care Network**

3W Health | Ashcroft | Edlesborough & Pitstone | Waddesdon Surgeries

Patient Support Service

Provided by: 3W Health, Ashcroft, Waddesdon, Edlesborough and Pitstone Surgeries.

We are a Social Prescribing service, here to support you with social, emotional or practical needs, focussing on improving health and well-being.

We can help you find what matters to you most and then direct you to services that might help.

We work alongside a range of health and social care professionals, local services, charitable and voluntary organisations.

To refer yourself or someone you care for, please phone or email the team.

Tel: 01296 713434 (option 6)

Email: Contact@NorthBucksPatientSupport.info

Or make enquiries at your GP Surgery

Mums, Sons and Annabel

We are "Mothers, Sons and Annabel", a very special team of Mums and their children who have known each other since Dagnall under Fives pre-school days, 15 years ago! Some of us are running the Great North run for Place2Be because they support children with their mental health in school. For more information about the work they do visit www.place2be.org.uk

If you would like to donate to this very worthy cause our Just giving page is: www.justgiving.com/fundraising/mums-sons-and-annabel
Thank you for supporting us!

In aid of





Edlesborough Parish Council News

Including Edlesborough, Dagnall and Northall

Ivinghoe Freight Strategy

EPC wishes to express its thanks to all the Parishioners who took the time to respond to the Ivinghoe Freight Strategy.

Due to the large number of responses from parishioners Buckinghamshire Council were obliged to revise the strategy and subsequently include the B440, Leighton Road through Edlesborough and Northall in the strategy.

The strategy is on course to be implemented in September 2022.

Have an issue, complaint or feedback?

Here's how to REPORT IT effectively.

The Council has noticed that an increasing number of parishioners are reporting issues such as faulty temporary traffic lights, fly tipping and anti-social behaviour on Facebook. Whilst this alerts some local people to the issue it does not inform the correct authority.

Should any parishioner become aware of an issue the Council requests that it is reported directly to the correct authority who can then take the necessary action to remedy the situation;

The villages of Edlesborough, Dagnall and Northall are covered by **Thames Valley Police** should you need to contact the police please ensure you ask for Thames Valley Police who are responsible for:

- Crime
- Vandalism
- Dangerous and obstructive parking
- Road safety issues, including speeding
- Missing person



Thames Valley Police can be contacted on 101 or via email at greatbrickhillwingivinghoenhpt@thamesvalley.pnn.police.uk

In an emergency please call 999 and ask for Thames Valley Police.

BUCKINGHAMSHIRE COUNCIL

The quickest way to report an issue to Buckinghamshire Council is to visit www.buckinghamshire.gov.uk and then click on the correct link.

Buckinghamshire Council is responsible for:

- Highways – including vision splays outside the 30 & 40mph limit, potholes, road markings, signs, pavement issues, lights outside the 30 and 40mph limit.
- Fly-tipping
- Recycling & Waste – including household collections and details about household recycling centres.
- Planning – including advice, applications and enforcement.
- Environment Issues – including noise, public rights of way, trees, etc.
- Care for Children & Families
- Community Safety

Emergency contacts

If there is an emergency and it's not a matter for the emergency services (999), then you can call



Buckinghamshire Council using the following numbers:

Roads and Pavements

To report flooding or a problem on roads and pavements that could lead to a fatal accident:

- In office hours: **01296 382416**
- Out of hours: **01296 486630**

Social Care Emergencies

- To report abuse: **01296 387021**
- Out of hours emergency contact call: **0800 9997 677**

Housing Emergencies

If you have a housing related emergency, please contact us.

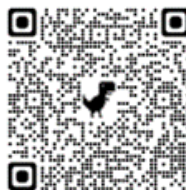
- For the Aylesbury and Wycombe areas please call **0800 999 7677** - follow the prompts to speak to one of our officers for advice and assistance.

If you see an issue and you really want to see it addressed swiftly please report it to the correct authority.

Cost of Living Crisis and Support

Residents can contact the Buckinghamshire Council Helping Hand team using:

- the online form www.buckinghamshire.gov.uk/helping-hand or by scanning this QR code
- by phone on 01296 531 151 (Monday to Thursday 9am to 5:30pm; Friday 9am to 5pm)



Allotments



The annual allotment rent for 2022/23 is due to be paid at the start of October 2022. The rent due is £2.10 per pole. EPC requests that payments are made by internet banking. Any tenants not able to pay by **internet banking** please contact the Clerk ASAP to discuss an alternative payment method. Please ensure rent is paid by 11th October 2022, late payments will incur a £10 administration fee. EPC currently holds a waiting list for all allotment sites, anyone wishing to be added to the waiting list should contact the Clerk.

MVAS

The new Mobile Vehicle Activated Signs (MVAS) have now been deployed within the parish. The purpose of these signs is to remind drivers of the speed limit and to encourage them to reduce their speed through our villages. Data collected by the signs can also be used as evidence for other traffic calming measures. These signs can and will be used in different locations throughout the Parish.



Improvements to the Children's Play Area on Edlesborough Green

EPC are currently awaiting the decision of the Planning Inspectorate as to whether they can proceed with their project to install new children's play equipment on Edlesborough Green.

EDaN Community Car Service

This is a group of local volunteers who support parishioners with journeys to hospital etc. The group which has been inactive due to Covid 19 has now resumed.

The group is in need of more volunteer drivers. Any parishioner interested in using the service or volunteering should contact the co-ordinator Peter Williams via email at peterw500@aol.com or on 01442 842506.

EDaN Beautification Team

The EDaN Beautification Team continue to work hard tending to the various planters in the

villages of Edlesborough, Dagnall and Northall which are all looking lovely.

Do you enjoy gardening and have some time to spare?

The EDaN Beautification Team is running low on volunteers for the tidying and watering of these planters. Anyone interested in getting involved or helping out with the watering should contact Mrs Christine Yates on 01525 220739 or chris@brooklyns.org.uk

Speedwatch & EDaN Traffic Management

Thames Valley Police have relaunched and restarted their Community Speedwatch – more information can be found at [Restart and relaunch for Community Speedwatch in 2021 · Thames Valley Police & Crime Commissioner \(thamesvalley-pcc.gov.uk\)](#)

Any parishioner interested in becoming involved with the EDaN Community Speedwatch for Edlesborough Parish should contact Cllr Alan Williams via email at alan.williams@edlesborough-pc.gov.uk or on 07828 398371

Council Meetings

The next Edlesborough Parish Council Meetings will take place on:

- Thursday 15th September 2022 – Edlesborough Memorial Hall
- Thursday 20th October 2022 – Edlesborough Memorial Hall

The meetings will commence at 7:30pm.

Parishioners are welcome to attend all Ordinary Parish Council meetings and may ask questions, raise issues and give suggestions during the Open Forum before the formal start of the meeting. Council requests that where possible questions, issues and suggestions are submitted in writing to the Clerk by the Tuesday preceding the meeting.

The Agenda and full minutes of previous Parish Council meetings are available to view on the website or from the Parish Clerk.



ALLOTMENT RENTS

Payment due by 11th October 2022

Rents Due: £2:10 per pole

Edlesborough Parish Council requests that allotment rents are paid by Internet Banking.

At the start of September all tenants will be sent an email or letter advising them of the payment information.

Should any tenant not receive a letter about the rent collection arrangements please contact the Clerk as a matter of urgency.

In order for the Parish Council to save on administration expenses it would be very much appreciated if tenants could **please ensure rent is paid by 11th October 2022**, late payments will incur a £10 administration fee.

Anyone wishing to take on an allotment should contact the Clerk who can advise them of plot availability or add them to the waiting list.

Clerk to Edlesborough Parish Council

01525 229358 or clerk@edlesborough-pc.gov.uk

Clerk: Miss Penny Pataky *Office hours Mon – Fri 10am – 1pm (Excl. Wed)*

Email: clerk@edlesborough-pc.gov.uk 01525 229358 Website: www.edlesborough-pc.gov.uk

Facebook: www.facebook.com/EDANParishCouncil



St John Ambulance call on you to support us with the delivery of the National Coordination of First Response project, in partnership with NHS England and Improvement. The aim of the project is to increase the survival rate of out-of-hospital cardiac arrests from 7% to 25% in England. This is only possible when more people are confident to carry out ventilation free CPR and there is a significantly increased use of AEDs by people in community settings. To save more lives, more people should receive training in CPR and using AEDs and know how to respond in emergency situations, reducing the bystander effect.

If you are confident in communicating with different groups of people and are passionate about promoting lifesaving skills to the public, then the *Community Advocate* role is for you! You'll be:

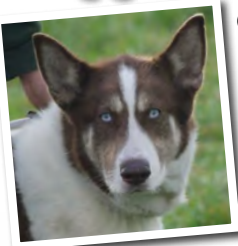
- Raising awareness of the importance of CPR/AED skills through engagement with targeted communities
- Providing CPR and AED knowledge to local community groups
- Reaching out to community groups and networks
- Tracking confidence levels of learners before and after each session

More importantly, you'll get a huge sense of satisfaction and pride delivering an essential service. It's great for you, great for your community and great for our nation, and it requires only a small commitment of your time. You will be expected to commit to a minimum of three hours a month – two 1.5 hours sessions.

Get in touch!

If you are interested in becoming a Community Advocate or would like to find out more about this volunteering opportunity, please contact Community.Engagement@sja.org.uk. We'd love to hear from you!

Appledown Rescue Dog of the Month



Our beautiful blue-eyed girl is Blaize a husky who was born in November 2016. Blaize needs a home with owners who have experience or knowledge of the breed. She is eager to please and has no behavioural issues, but because of her breed she will need quality exercise and consistent rules. Blaize needs to be an only pet in a home where any children are 13+ and she has access to a secure garden. For more info and photos please see her album on our Facebook page. If you feel you can offer her a loving forever home please visit our website for details of the rehoming process and an application form. Viewings are by appointment only.

To support our work you can make a one-off donation of £3 by texting APPLE to 70111, or donate via Paypal using the 'DONATE Support a Cause' option. Cheques are very welcome too!

Appledown Rescue & Rehoming Kennels Harling Road, Eaton Bray LU6 1QY
01525 220383 (10am-1pm & 2-4 pm) E-mail: appledown.kennels@btinternet.com
Website: www.appledownrescue.co.uk **Viewings are by appointment only.**

Follow us on Facebook, Twitter & Instagram!

Summer 2022 Tennis Camps



Week 1 – 9-11am Junior Yellow Ball (11-18yrs)

Week 2 - 9-11am Mini Tennis (10 and under)

Week 3 – 9-11am Mini Tennis (10 and under)

Our Camps combine fun and games with Tennis Coaching. Youngsters aged 10 years and under learn the basics while having lots of fun doing games and activities specifically designed to build co-ordination, balance and movement. The older age groups work on drills to embed good movement and build fitness, which lead onto appropriate technical aspects of Tennis being covered. They finish up with valuable Tournament and match play tuition and practice, and even rain doesn't always stop play. You don't have to be a member of the Club to attend the Camps and all abilities are catered for.

	Junior Tennis Camp =	Ages 11-18 years old			
Week1:	Monday 1 st August	Tuesday 2 nd August	Wednesday 3 rd August	Thursday 4 th August	Friday 5 th August
	Mini Tennis Camp =	Ages 4-10 years old	Red/Orange/Green Balls		
Week2:	Monday 8 th August	Tuesday 9 th August	Wednesday 10 th August	Thursday 11 th August	Friday 12 th August
	Mini Tennis Camp =	Ages 4-10 years old	Red/Orange/Green Balls		
Week3:	Monday 15 th August	Tuesday 16 th August	Wednesday 17 th August	Thursday 18 th August	Friday 19 th August

Courses are run by Head Coach Sara Bamford (PTR Pro and LTA Level 4) with an LTA license, DBS and Emergency First Aid. All equipment is supplied but please wear sports clothing and suitable trainers.

Ages 4-18 catered for. Please note all camp sessions will run inline with the LTA COVID Guidelines more information can be found at www.lta.org.uk

	Cost
Week (5 days)	£60
1 Day	£13



SCAN ME

***10% sibling discount and 10% members discount available**

If you have any questions or need any more information, please call Sara Bamford on 07561-571578.

To book directly online please visit our website or scan the QR code

www.ebltc.org.uk

Book now and guarantee your place! Eaton Bray Tennis Club, School Lane, Eaton Bray, LU6 2DT



Café masala

Exquisite Indian Cuisine

We Cater for Office or Private Parties and don't forget to try our Sunday Buffet

10% Discount on all Takeaway Orders Over £12

Fully Licensed & Air Conditioned

Open Seven Days a Week

Hours: 12 Noon to 2.30pm & 6.00pm to 11.30pm

Tel: 01525 22 22 64

63 Bower Lane · Eaton Bray · Dunstable · Beds · LU6 1RB
email: taraque@hotmail.co.uk · www.cafemasala.com

EDLESBOROUGH SURGERY

11 Cow Lane Edlesborough

All Enquiries/Appointments

01525 221630

www.edlesboroughsurgery.co.uk

Friendly village Practice offering a wide range of health services including coils/implants, minor surgery, travel advice, in-house blood tests at surgery, on-line appointments and repeat prescription ordering.

EDLESBOROUGH PHARMACY

01525 223181

Pharmacist - Mitul Patel



Friendly reliable professional service at the pharmacy and well-established delivery service to the villages.

Professional advice always available.

All doctors/dentists/veterinary/hospital prescriptions dispensed.

Herbal/Homeopathic products available. In addition we supply Disability aids, e.g. Wheelchairs, Incontinence aids, Ostomy/Colostomy products,

Malaria Prophylaxis, Private Flu Vaccinations

We are happy to order any products you may require.

Instant PASSPORT/ID Photos available

***** New for Everyone with Dunstable Doctors *****

Patients of Kirby Road, West Street, Kingsbury Court, Priory Gardens, Eastgate Surgery

Sign up now to have your prescriptions sent electronically to Edlesborough Pharmacy. Collect your medication from us, no car park charges and a well stocked pharmacy.

We have a free weekly delivery service for the housebound, elderly and for those unable to collect from the pharmacy.

email mitul.patel5@nhs.net / Tel 01525 223181 for sign-up forms

ASPECT

YOUR LOCAL ELECTRICIAN
OVER 20 YEARS EXPERIENCE

ELECTRICAL

CONSUMER UNIT UPGRADES (FUSE BOARDS)
LIGHTING - INTERIOR, EXTERIOR & SECURITY
HD CCTV
REWIRING
NEW INSTALLATIONS
TESTING & INSPECTION

ALL WORKS TO CURRENT WIRING & BUILDING REGULATIONS
PART P CERTIFICATED & FULLY INSURED

CALL STEVE ON
07976 283969
aspect@sparky.me



CHIROPODY HOME VISITING PRACTICE

Julia Reading, BSc(Hons)

17 years experience

- * Corns * Hard skin * Verrucae
- * Thickened/Ingrowing nails
- * Nail cutting * Diabetic feet

Please telephone: 0774 647 2781

for more information or to make an appointment

The COLLEGE of PODIATRY

hpcpc registered www.hpcpc-uk.org



JAMES FALCON-CROSS

LANDSCAPING AND OUTDOOR LIVING DESIGN

ALL ASPECTS OF LANDSCAPING UNDERTAKEN INCLUDING FENCING, TURFING AND PATIOS

TIMBER STRUCTURES DESIGNED AND BUILT

VEGETABLE AND HERB GARDENS

01442 843258 / 07769 901325

ONECROSSFALCON@GMAIL.COM



Live a healthy & active life

PHYSIOTHERAPY
PODIATRY &
CHIROPODY
PILATES
ACUPUNCTURE
SPORTS INJURIES
MASSAGE
WOMEN'S HEALTH
& PREGNANCY
CARE

St. Judes
physiotherapy, health and well being

01525
377751
enquiries@stjudesclinic.com
www.stjudesclinic.com





Giblin



4a Wallace Drive · Eaton Bray · Bedfordshire · LU6 2DF

01525 220605

info@giblinproperty.co.uk

www.giblinproperty.co.uk

lettings@giblinproperty.co.uk

Sales

Lettings

Management



**Stephen D.
Janes**

(Established in 1982)

**CARPENTRY, JOINERY
KITCHENS FITTED
PROPERTY MAINTENANCE
TELEPHONE: 01525 220649**

G & J Groundwork & Landscapes

Block Paving * Patios * Driveways
Clearance * Paths * Shingle * Slabs
Artificial Grass * Fencing
Free estimates

Garry
07949 118011

**toni's
tootsies**

mobile foot health care

-  **Fungal Infections**
-  **Ingrowing Toenails**
-  **Callus/Hard Skin**
-  **Cracked Heels**
-  **Nail Reconstruction**
-  **Verrucas**
-  **Nail Trimming**
-  **Corns**



Toni Nash is a fully qualified Foot Health Practitioner based in Slapton, Bucks... and she's ready to take your Call!

07484 749393
tonistootsies@gmail.com
www.tonistootsies.co.uk

Misty Double Glazing?

Over 30 Years experience. FREE Quotes

Over 30 Years experience. FREE Quotes

**KEEP YOUR WINDOW FRAMES...
... WE JUST REPLACE THE GLASS!**

• UPVC • Aluminium • Or Wood

Because we replace just the glass the repair is a Fraction of the cost of a complete replacement window.

BEFORE



AFTER



mistydoubleglazing.co.uk
QUALITY GLAZING SERVICES
01525 876808

WE ALSO REPLACE BROKEN...
• Glass • Handles • Hinges & Locks
AND REPAIR...Patio Doors & Conservatories!

ILLUSTRIA

Kennels & Kathotel

Offering your pet a fully licensed Dog and Cat boarding service.

Purpose built Dog kennels

Individual Cat chalets with outdoor exercise runs

All in pleasant country surroundings

01582 ~ 665343



ILLUSTRIA
Springfield Road
Wellhead
NR Dunstable Beds
LU6 2JT



Proprietors

Mick, Denise and Michele Garrod



M J Security Systems Limited

www.mjsecurity.co.uk

01582 665022

Intruder Alarms CCTV Door Entry/Access

- Est. for 35 years and NSI Gold Accredited Installer since 1987
- Bespoke systems for commercial and domestic properties
- Free site surveys and quotations
- Takeover/removal/upgrade of existing equipment
- 24 hour/365 day engineer access
- Non contract engineer call out



Absolutely Plastered

DOMESTIC/COMMERCIAL,
CLEAN AND RELIABLE SERVICE,
FREE ESTIMATES, FRIENDLY ADVICE



* Plastering & Coving

* Floor Screeding

* Pebbledashing & Rendering

* Dry Lining

* Cornices & Mouldings

* Insurance Work Undertaken

CALL NICK CONWAY ON

Mobile: 07751 830716

17 Kirkstone Drive, Dunstable LU6 3PP

ARC Contract Services Ltd

- Painting & Decorating ● Plastering
 - Wall & Floor Tiling ● Door Hanging
 - Bathroom & Kitchen Installations
- 20 years experience

All work guaranteed and fully insured

Call Adrian : **01582 539179**

Mobile : **07789730580**

CHARLES HILL

GARDEN SERVICES LTD
DESIGN | BUILD | MAINTAIN

LANDSCAPE CONTRACTORS
NCH Horticulture City & Guilds Garden Design

A professional company working with all your garden requirements from design to complete landscape.

07773 723236

www.charleshillgardenservices.co.uk

www.allyearroundbbq.co.uk



DM SECURITY

Commercial & Residential Alarm Systems

CCTV • Access control • Intruder Alarms • Locks
Electrical Installations • Fuse Boards • Re-wires

John Dorman: 07483 872017 Chris Mahoney: 07801 552113

20 Slicketts Lane, Edlesborough, Dunstable, Beds, LU6 2JD

JoAnn Latus School of Dance



- Ballet, Tap and Modern classes for children aged 3 and upwards
- Adult Ballet classes starting in the New Year
- Professionally trained teachers and safeguarding policies in place
- Regular exams, shows and theatre trips

Classes held in Buckinghamshire, including Eaton Bray on Tuesday and Friday evenings

For more information contact JoAnn Latus:

Tel: 07800 518654

Email: info@jolatusdance.co.uk

Web: www.jolatusdance.co.uk

@jolatusdance



Moren Associates
Publishing Services

Desktop Publishing

Presentations

Books, Leaflets Brochures

Magazines, Adverts

Design & Layout

Self Publishing

Digitising

Scanning of Photos &

Documents, Slides & Videos

Archiving, Photo Repairs

Domain Name, Email

Address &

Web Site Hosting

01525 229695

enquiries@morenassociates.co.uk

www.morenassociates.co.uk



TIME TO MOVE?

**Don't be alarmed,
we're here to help!**

Established in 1999

e: info@plummproperty.co.uk

Five Good Reasons to use **Plumm Property**

Private Offices - direct savings to you on fees

Local Knowledge - from our highly experienced team

Unrestrictive contracts - no lengthy tie-in periods

Marketing to outside area - attracting London buyers

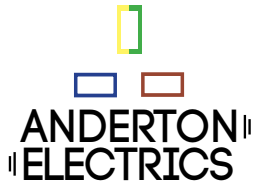
Managing all your needs with a 1st class professional service

From Offer through to Completion of Sale



01296 660230

www.plummproperty.co.uk



Keeping you wired up.

- ✓ Free quotations, no obligations
- ✓ Emergency Work – day or night
- ✓ Domestic or Commercial
- ✓ A name you can trust



Dunstable - 01582 343 123
 Tring - 01442 824 740
 Mobile - 07771 698 151
 james@andertonelectrics.co.uk

Checkatrade.com See our feedback on Check a trade
 www.checkatrade.com/andertonelectrics



www.andertonelectrics.co.uk

D.A. Windows, Doors & Conservatories

Emails: dawindows@live.co.uk
 mimcavinder@hotmail.com
 Telephone: 01582 485443
 Mobile: 07807 798387

- Installation of UPVC windows, doors and conservatories
- Composite doors and side lights – choice of design and colours
- Replacement glass units and window maintenance

QUALITY PRODUCTS
QUALITY WORKMANSHIP
QUALITY PRICES

Contact us for a quotation or to discuss your requirements

ACCREDITED MEMBER OF THE INCORPORATION OF PLASTIC WINDOW FABRICATORS AND INSTALLERS

GOVERNMENT APPROVED CERTASS REGISTERED CONTRACTOR REG. NO. 001634

McTimoney CHIROPRACTIC



Margie Craib BSc BHSI DC AMC MMCA
 Human and Animal Treatments

Ashridge Farm, Ringshall, Berkhamsted, Herts HP4 1ND
 Telephone: (01442) 842729

General Chiropractic Council Registration No. 293

Spinney Landscapes & Gardening Services

All Aspects of Grounds Maintenance
 Leaf Clearance • Grass Cutting/Scarifying
 Patios & Driveways • Pressure Washing
 Weed Control • Tree Work & Wood Chipping
 Fencing • Snow Clearing • Mini Digger Hire
Tel: 01525 839622 Mob: 07876 500292
Email: spinneylandscapes@gmail.com
www.spinneylandscapes.com



EDLESBOROUGH TENNIS CLUB

Come and play tennis with us at our friendly club on The Green

- High quality floodlight courts with easy booking system
- Coaching available for adults and children from our LTA coach
- Weekly club nights, with balls and floodlights provided

Contact us at: enquiries@etctennis.org or visit us at: www.etctennis.org

Back to School Back Health

It's that time of year again – end of the summer and back to school and time to start packing those school bags again. During this hectic time, it is very easy to forget about our backs. Whether you are a pupil or a teacher this applies to you.

Your back can suffer from a lot of stress and strain if you are regularly carrying heavy bags of books incorrectly. Carrying a school bag over one shoulder can cause a significant imbalance in your posture and place a lot of increased load on your shoulder joint. It can also place an increased strain on your neck muscles and lead to injury over time.

Your spine is made up of vertebrae (bones) and discs. The discs act as shock absorbers for your spine. Carrying too many books, or too much of a heavy load, can place an increased strain on these discs causing them to gradually wear and become less effective shock absorbers. This may eventually lead to pain or injury.

So, what can you do to prevent injuries and maintain a healthy back?

- Make sure you always carry your school bag over both shoulders. Use a rucksack, ensuring you use both straps over your shoulders. This will help distribute an even load and significantly reduce the strain on your neck and shoulder muscles, ligaments, joints and discs.
- Try not to carry lots of heavy books on a regular basis. If you know in advance that you are going to need to use lots of books, bring them home over several trips so that your load is lighter and make use of a school locker, if you have one.

If you or your tween/teen are having back pain, it may be time to get some postural advice and treatment. Your local physiotherapy clinic will be happy to help.



26 Lake Street,
Leighton Buzzard, LU7 1RX

☎ ✂ 01525 377751

📧 www.stjudesclinic.com
enquiries@stjudesclinic.com



HARRISON, LYNNE, DYLAN, PETTY & ORBISON PAUL HOPKINS, ROY ORBISON & THE TRAVELLING WILBURYS

Fri 23rd Sept at 7.30pm
Tickets £22.50* & £24.50*



The Big O & the Wilburys show is back - bigger and better than ever! Come and celebrate with the band as they commemorate 32 YEARS since the Wilburys original album release and pay a special tribute to The Big O, who died later the same year. Roy Orbison and the 'Traveling Wilburys Experience' will take you on a journey through the story of the

Wilburys. With expert narrative and BIG SCREEN ACTION, this 32nd Anniversary Special is unmissable. With tributes to, Jeff Lynne, George Harrison, Tom Petty, Roy Orbison and Bob Dylan.

All the Traveling Wilbury hits and classics are included in the show including Handle with Care, End of the Line, Wilbury Twist, Heading for the Light, Tweeter and the Monkey Man, Nobody's Child, Last Night and many more.

Totally unique to this production are Five authentic Lookalike-Sound-alike's to the famous Traveling Wilburys, enabling the show to explore the Solo Hits of the Famous Five. Mr Blue Sky, Pretty Woman, Blowin in the Wind, Here Comes The Sun, Runnin Down a Dream, Sweet Talkin Woman, Only the Lonely, the Mighty Quinn and I Got My Mind Set on You are just a few of the Million-Selling hits you'll hear throughout the show. This joyous, up-tempo feel-good celebration of classic pop music is guaranteed to have you singing and dancing in the aisles.

Grove Theatre, Grove Park, Court Drive, Dunstable LU5 4GP. www.grovetheatre.co.uk

Box Office: 01582 60 20 80

*A £1 transaction fee will be added per ticket.

BUCKINGHAMSHIRE
LOTTERY supporting **Pace**

**Play today
and support our cause!**

- Make a difference to the lives of children with neurodisabilities.
- Sign-up for only £1 a week!
- You get the chance to win cash prizes up to £25,000 every week!
- We get 50p from every £1 ticket and a further 10p goes to other good causes.
- Join your community in making where we live an even better place

To start supporting, visit:
www.BuckinghamshireLottery.co.uk
and search for: **Pace**

Supporters must be 16 years of age or older.



*Take a book you want to read
Leave a book you want to share*

Future Book Swap dates at St Mary's Church

August 6th 10.30 – 12.00

September 3rd 10.30 – 12.00

October 1st 10.30 – 12.00

We are pleased to see many familiar faces returning to our book shelves monthly to choose a new book and engage in a chat about books they have enjoyed. If you like reading and would like to explore the opportunity to read books that others have enjoyed, please bring a book to swap and come and join us. The book swap is free and open to all adults.

For more information, or if you would like to be involved, please contact:

Chris Sanders Email: chris.sanders45@gmail.com

Jenifer MacKenzie Email: jenimackenzie@hotmail.com

Eaton Bray Village Hall Quiz

The next quiz is on 3rd December – please remember to put it in your phone diary or on you Kitchen Calendar.

Again I can leave your synapses with a short message 😊 with ten 1980s music quiz based questions. Answers are on page 64.

1. What year was Live Aid?
2. Who sang 1984 hit All Cried Out?
3. Which popular AC/DC album was the first to feature new vocalist Brian Johnson?
4. Who sang the title track of 80s Bond film The Living Daylights?
5. In which iconic music video do Queen parody Coronation Street?
6. Now associated with rickrolling, which 1987 Rick Astley song became number one in 25 countries?
7. Which single gave Whitney Houston her first UK number one in 1985?
8. What was the best-selling single of the decade in the UK?
9. Which band was awaiting a Letter From America?
10. Who went straight to number one in 1981 with Stand and Deliver

Contact me by email to book your table @ Mintyman1958@gmail.com

✍️ Robert Taylor

EATON BRAY PARISH COUNCIL

Eaton Bray Parish Council Focus Report

A full copy of the minutes for Eaton Bray Parish Council can be found on our website: www.ebpc.co.uk. A hard copy of the minutes can also be viewed on the Parish Council's notice board at The Coffee Tavern.

Parish Council Website

To keep up to date with what is happening in your parish, you can get all Parish Council news and updates from the Parish Council website. The website has all Parish Council meeting agendas, minutes, financial documents and contact information as well as official sponsored events/initiatives and is the official council communications website. Visit it here: www.ebpc.co.uk

Parish Council Open Office/Surgery

If you need to speak to the Parish Council Clerk about local matters, you can visit the Parish Council Office at the Coffee Tavern on the second Tuesday after the monthly parish council meeting each month. For further information, please contact the Parish Clerk or visit <https://www.ebpc.co.uk/parish-council-surgery/>

FixMyStreet

CBC have a reporting system to make reporting road/street issues easier, quicker and more accurate. To report and track highways and environment problems go online/use the FixMyStreet app: <https://fixmystreet.centralbedfordshire.gov.uk/>

EATON BRAY PARISH COUNCIL MEETING HELD ON MONDAY 6 JUNE 2022, from 7:30pm

(Minutes ratified at PC Meeting, 04/07/2022)

Central Bedfordshire Council (CBC)

Cllr Philip Spicer - email: Philip.Spicer@centralbedfordshire.gov.uk

CBC Website: www.centralbedfordshire.gov.uk

CBC Email: customers@centralbedfordshire.gov.uk

CBC Customer Services: 0300 300 8301

- The removal of a tree in Medley close was delayed until after the Platinum Jubilee. The Tree Officer's assessment of the tree was that it was rotten on the inside, diseased and needed cutting down. CBC are looking at planting a replacement tree.

Bedfordshire Police

PC Steven Beer was in attendance. They are aware of issues regarding vehicles blocking access to The Meads and are monitoring the situation.

Planning Applications – May/June 2022

A copy of the Parish Council's response to planning applications can be seen on the Parish Council website or obtained by applying to the Parish Clerk.

Monthly Payments May/June 2022

A copy of the Parish Council monthly accounts can be seen on the Parish Council website or obtained by applying to the Parish Clerk.

Recreation Grounds

- The Parish Council are still looking at designs/costs for additional lighting in School Lane recreation ground.
- The Parish Council are obtaining quotations for future groundwork improvements

to School Lane play area.

- The swings and slides in The Rye ground are in the process of being repaired/refurbished, with the old seesaw having to be removed as recommended in the Play Inspection report.

Watercourse/Mill End Close

Due to a potential new leak in the river island, the Parish Council are in the process of getting the area assessed for possible future improvement works.

Parish Allotments

- All plots are currently let. The Parish Council does hold a waiting list. Should you wish to be added to the list, please contact the Parish Clerk to register your interest.
- An Allotment Inspection was carried out in June 2022, with the follow-up inspection to be completed in September 2022.

Speedwatch/Highways

- Unfortunately, there are not enough Speedwatch members to comply with police guidelines. The Speedwatch Group has therefore been put on hold due to lack of interest, more volunteers needed for viable group to be able to operate. If you are interested in getting involved, please contact the Parish Clerk.
- The Parish Council have agreed to the installation of two new Speed Indication Devices [S.I.D.] in the parish, to replace the current old/broken devices. The council are to look into the cost/location of a potential third device being fitted.

Advertising In The Parish

Any advertising on parish land must first have the approval of the Parish Council. Both the advertising policy and application form can be found on the Parish Council website or obtained by applying to the Parish Clerk.

Platinum Jubilee

- The Parish Council thanked Cllr Simkins for organising the lovely display of flags along the High Street in recognition of Her Majesty The Queen's Platinum Jubilee.
- The Parish Council will be planting a tree in celebration of the Platinum Jubilee in School Lane recreation ground, with delivery/planting around September.

Bus Shelters

Due to offensive graffiti being written in some of the parish bus shelters, the Parish Council has organised for the three brick bus shelters to be cleaned and repainted.

Parish Council Meeting (1st Floor, The Coffee Tavern, Eaton Bray)

Details can be obtained from the EBPC website, www.ebpc.co.uk

- Parish Council Meeting, Monday 5 September 2022, from 7:30pm
- Parish Council Meeting, Monday 3 October 2022, from 7:30pm

Parish Council Open Office: 10am-12noon at The Coffee Tavern, High Street, Eaton Bray

(Dates/times subject to change, please check the EBPC Website for updates)

- Tuesday 9 August 2022
- Tuesday 13 October 2022



Heidi Head, Parish Clerk

Email: clerk@ebpc.co.uk – Telephone/Text: 07931 479663 – Website: www.ebpc.co.uk

Office Hours: Tuesday/Thursday/Friday 09:30-13:30hrs

Follow Eaton Bray Parish Council on Facebook and Twitter

Keep up to date with what is going on in your parish



Our libraries invite children to join this year's Summer Reading Challenge



We're calling for children to discover a reading adventure at their local library, during the 2022 Summer Reading Challenge. This year the theme is gadgeteers, with a science and engineering themed challenge, supported by the Science Museum. The challenge is launching in all libraries across Central Bedfordshire on 22 July and will run until 10 September. To take part, all children need to do

is sign up at their nearest library at any time during the challenge. Children must be a member of their library service.

To participate, children of all ages just need to read any six library books of their choice over the summer - books may be borrowed from a local library or children can use e-books, magazines and audio books available to download for free using their library cards and the Libby and Borrowbox Apps.

Participants will receive rewards along the way: stickers, a bookmark and a pencil for reading two books, stickers and a goody bag for reading four books, and the ultimate reward will be: a certificate, stickers and a medal for those children who complete their six books by 10 September.

Children aged 4-16 who complete the challenge will be entered into a lucky dip at their library for the chance to win a Kindle Fire tablet. There is also an opportunity to enter a prize draw for Treasure Hunt participants, with the chance to win a £10 book token.

There will be fun activities along the way, such as craft activities available from your local library or online, science workshops run by Sublime Science, with mixed demonstration and hands-on science, and even science story time. There will also be a number of other exciting events and activities planned for families during the summer holidays, which will be advertised on our Virtual Library or follow our libraries on Facebook.

To learn more about the Summer Reading Challenge, please visit Summer Reading Challenge or pop into your local library.



Eaton Bray Cricket Club (Est 1914)

- 2 Teams FCCL
- 1 Team Beds Sunday League
- 1 Team Village T20 League
- 6 Junior Teams U15 2xU13
2 x U11 U9

Good on & off field facilities

Come and join a family friendly & progressive cricket club.

For more information contact us on Facebook & Twitter @EatonBrayCC



Did you Know Dunstable has Two Theatres?

Did you know Dunstable has two theatres? Most people know the Grove theatre, that's the new kid on the block. The older Little Theatre started presenting shows and supporting the development of performers and production teams in 1968. The Little Theatre, on High Street South, is home to the Dunstable Rep Theatre Club. A vibrant community of volunteers, producing a huge variety of plays and some social events. About every eight weeks a new in-house play runs for eight performances and between these, a few co-productions with other companies. On non-performance nights, there's more activity including social activities, rehearsals, set building and technical work. As well as the active members, the Rep has many supporters who join the club just to see the plays. In return, they get early and discounted booking. So now know you know who we are why not come along to the first play of our 22/23 season and enjoy our production of CHESHIRE CATS or become a member and enjoy our generously discounted ticket prices.

DUNSTABLE REP @ THE LITTLE THEATRE COMING SOON!!!



CHESHIRE CATS by Gail Young - 23rd Sept - 1st Oct

Follow the Cheshire Cats as they speed walk their way to fundraising success in the CRUK Moonwalk. Join them as they attempt to walk the gruelling 13 miles across London in their decorated bras and posh new trainers. Cheshire Cats is a fun cross between a girls' night out and a real mission to support a cause close to many hearts, with plenty of laughs and a few tears along the way.

BOX OFFICE OPENS: SATURDAY 10th AUGUST

For booking information: www.littletheatre.org.uk/book

For further information: www.littletheatre.org.uk

[Facebook.com/DunstableRep](https://www.facebook.com/DunstableRep)

Flower Festival

All Saints Dagnall

Theme

'For the Beauty of the Earth'

Friday 16th September

Preview with wine, canapés and live music

7pm to 9pm £10 ticket

Saturday 17th September

10am to 5pm

£3 ticket

Sunday 18th September

12 midday to 5pm

£3 ticket

Followed by a service of thanksgiving

For further details please contact

Barbara Morton on 01525 852368

Friend of Bucks



**NORTHALL & DISTRICT
AGE CONCERN**
A GREAT LOCAL CAUSE

AGE
Concern



Enjoy our

HARVEST FESTIVAL AUCTION

**WITH PROFESSIONAL AUCTIONEER
AT**

THE SWAN NORTHALL
FRIDAY 23rd SEPTEMBER



ENTRANCE FREE

Viewings from 7:30pm



Followed at 8pm by THE HARVEST AUCTION



heritage **open** days

Here at

St Mary's Church, Eaton Bray
on Saturday September 10th
2 - 5pm

**Come and enjoy this beautiful 800 year old building.
Church records will be available to look up your
family's events from the past.**

**Have fun doing a quiz and church trail,
innovative facts to interest you.
There is no charge for this event.
Refreshments available.**





www.eblions.co.uk

Come and play fun team football within our village community

Our coaches are FA Qualified and CRB checked

New players required

EB Lions your local youth football club are looking for keen boys and girls from age 4 upwards to join our friendly and inclusive club based in and around Eaton Bray, Edlesborough, Dagnall, Kensworth, Slapton, Totternhoe and the surrounding area. We have many teams and over 200 players playing exciting team sport! We welcome new players at any age group to start playing football within our village community.

We are specifically looking for players for the teams below.

School years quoted are for Sept 22.

Saturday teams

- U10 (Year 5)
- U15 (Year 10)
- U18

Sunday teams

- U9 (Year 4)
- U11 (Year 6)
- U12 (Year 7)
- U14 (Year 9)
- Ladies (Age 16+) including goal keeper
- Mens

Please get in touch if you want to play, we have teams at most age groups. Contact us at enquiries@eblions.co.uk.



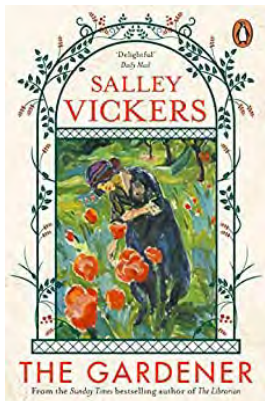
For iced coffee and iced cappuccino's, use frozen coffee cubes to ensure the drink doesn't get watered down!



Book Recommends...



Book Leighton Buzzard is a local independent bookshop based in Leighton Buzzard town centre. They stock a range of fiction, non-fiction, children's, cookery and life style books, host story times and events and also offer an ordering service. This month, manager Jenni has selected her top recommendations.



Adult:

The Gardener by Sally Vickers, Paperback £8.99

Artist, Hassie Days, and her sister, Margot, buy a run down Jacobean house in Hope Wenlock on the Welsh Marches. While Margot continues her London life in high finance, Hassie is left alone to work the large, long-neglected garden. She is befriended by eccentric, sharp-tongued, Miss Foot, who recommends, Murat, an Albanian migrant, made to feel out of place among the locals, to help Hassie in the garden. As she works the garden in Murat's peaceful company, Hassie ruminates on her past life: the sibling rivalry that tainted her childhood and the love affair that left her with painful, unanswered questions.

But as she begins to explore the history of the house and the mysterious nearby wood, old hurts begin to fade as she experiences the healing power of nature and discovers other worlds.



Children's

Skandar and the Unicorn Thief by A.F. Steadman, Hardback £12.99

Thirteen-year-old Skandar Smith has only ever wanted to be a unicorn rider. To be one of the lucky few selected to hatch a unicorn. To bond with it for life; to train together and race for glory; to be a hero.

But just as Skandar's dream is about to come true, things start to take a more dangerous turn than he could ever have imagined. A dark and twisted enemy has stolen the Island's most powerful unicorn - and as the threat grows ever closer, Skandar discovers a secret that could blow apart his world forever . . .

Get ready for unlikely HEROES, elemental MAGIC, sky battles, ancient secrets, nail-biting races and FEROCIOUS UNICORNS, in this EPIC ADVENTURE series that will have your heart soaring. Perfect for fans of Rick Riordan.

BOOK Leighton Buzzard

3 High Street Mews

Leighton Buzzard

LU7 1EA

01525381215



Eaton Bray Methodist Church

Whit Sunday coincided with the Queen's Platinum Jubilee and our visiting preacher, Fiona Arscott-Smith, made a welcome return to our church, and spoke of the Coronation vows and the inspiring way in which the Queen had honoured her commitments to God and country. Pentecost is a special moment of change and all in the family of God must draw on the power of the Holy Spirit to adapt to change and overcome difficulty. On the second Sunday in June, for the first time in three years, the whole circuit came together for a celebratory service on Dunstable Downs. It was a mixture of joy and sadness, as we said goodbye to Rev Nina Johnson, who is leaving The Square and moving on to new commitments in Devon. On the third Sunday, Fathers' Day, our Communion service was led by Rev Wallace Edwards, who gave a moving sermon about our special relationship with 'God the Father', a model for all fathers, forgiving and inclusive. On our final June Sunday, we had the immense pleasure of welcoming a new preacher, Rev Timothy Haines. He gave us an inspirational summary of his work as a Pioneer Community Worker in the new housing development Bidwell West (on the edge of Houghton Regis) - a project supported by several local churches of different denominations. His sermon was equally impressive; a challenging insight into the sacrifices God asks us to make when we become his followers.

A Warm Invitation

If you would like to join us in a Sunday service, you would be very welcome. Our Sunday worship takes place in the Eaton Bray Methodist Church on Totternhoe Rd and starts at 10.30am.



Nigel's Thoughts

Dear Friends,

What a blessing these warm summer days are, especially when we remember the severity of the worst of the winter weather. Of course, we 'brits' love to have a moan about our climate and it really has been rather hot just recently!

What amazes me though is that we are alive and able to experience the wonders of God's world at all.

A fitting prayer says:-

"Lord God, source of all life, we rejoice that through the power of your love we are alive; breathing, thinking, feeling creatures, made in your likeness and for your glory.

Lord God, source of life, recognising that our life exists through your desire, we thank and praise and glorify you."

Whatever you are doing this summer I hope that you will find time for refreshment and to centre your heart and mind again in the great love of God.

You are his precious treasure and his greatest desire is that knowing him, together with all his children, you might grow and discover that wholeness which is his greatest gift.

He speaks to us in so many ways, in the beauty of the world around us (whatever the weather!) and he has spoken in Jesus, his absolute and final word of love.

May this time provide the opportunity for us to respond, as we will, to God our Father and Jesus our saviour, friend and brother.

God bless you,

✍️ Nigel

Easy-to-Scale Cheesy Fish Pie with Kale

By Anna Glover

Prep:10 mins, Cook:45 mins, Serves 2

Double the ingredients in this easy fish pie if you need to feed four, or quadruple for eight. This comforting dinner is perfect for midweek, and adaptable for any situation

Ingredients

200g Maris Piper potatoes, cut into chunks
1 tbsp butter
1 tbsp flour
200ml whole milk, plus 1 tbsp
½ tsp Dijon mustard
100g cheddar, gruyère or emmental, grated
200g fish pie mix (e.g. a mix of salmon, haddock and prawns)
50g frozen peas
50g shredded kale
1 spring onion, finely sliced
1 tbsp parmesan, finely grated
green salad, to serve (optional)



Method

Step 1

Tip the potatoes into a pan, cover with hot water from the kettle and add a pinch of salt. Simmer for 15-20 mins until tender, then drain and leave to steam-dry.

Step 2

Meanwhile, warm the butter in a heavy-based pan over a low heat. Add the flour and stir until you have a paste. Gradually whisk in 200ml milk until you have a thick white sauce. Simmer for 3-4 mins, stirring. Season, then stir in the mustard and half the cheese, and continue to stir until the cheese has melted. Fold in the fish, peas and kale, and cook for 8 mins more, or until the kale wilts, the fish is just cooked and the prawns are starting to turn pink.

Step 3

Heat the grill to medium-high. Mash the potatoes with the spring onion and 1 tbsp milk. Fold in the remaining cheese and season well.

Step 4

Tip the filling into a heatproof dish and spoon the cheesy mash on top, swirling it with a fork until the filling is completely covered. Sprinkle over the parmesan and grill for 10-15 mins until the pie is golden and bubbling. Serve with a green salad, if you like. Uncooked pie, well covered in the dish, will keep in the freezer for up to three months.

Courtesy of BBC goodfood www.bbcgoodfood.com



Northall Baptist Church

200 years and still going

A little Church with strong local links

Working Together

Did you enjoy the St. Mary's Carnival on Edlesborough Green?

The weather was better than predicted as it didn't rain until after we had packed up. The sun shone quite a lot of the time, although it was a little windy at times.

The wide assortment of stalls gave enjoyment for all. It was lovely to meet friends and neighbours that we hadn't met for some time and catch up with those we'd not seen since before lockdown. Fish and chips, burgers, cake and ice-cream meant there was enough to keep us fed and the games kept every-one entertained.

The Queens and the Attendants on the floats all had a good time dressed in their pretty dresses. One of the exhibits that we haven't seen for 3 years. The performances in the ring were interesting, the dog show, singing, exercises as well as the old cars as usual were delightful, together with the amusements making the whole day enjoyable.

So, everything worked together. Fun was had, friendships renewed and food consumed. A great party, while donations helped to support the local Church and local charities. In the Old Testament book of Psalms, King David wrote 'How good and pleasant it is when God's people live together in unity'. How much more enjoyable and achievable when things are working together.

We had an interesting experience at the Carnival as we shared our pitch as **Village Churches Together**. We shared the work of erecting and taking down the huge marquee. This involved all pitching in to do what we could to help and to follow the instructions to ensure all the pegs and toggles were in the right place. Churches working together has been a goal in recent years. After all we have a common goal of eternal life with our Saviour Jesus Christ. There



"Village Churches Together" at the Carnival

is no competition there. So a bit of practice here and now doesn't go amiss!

There was a great deal of interest in the free games on offer, the free bags from the Salvation Army and the free books and pencils given out. Children particularly tried their skills at a variety of games but older people pitted their skills at Jenga. All was free. Some offered to pay but God's love to all is free. Amazing!

In these difficult times both in this country and around the world, why not think about God's love in Jesus, free if you only ask for it.

Our Sunday services, are now back in Church 11 am. We would love you to join us for our worship and song. You will get a warm welcome. For those unable to attend in person we also stream our services.

For those interested in the history of Northall Baptist Church, a free copy of the booklet, *Rebels in Green Pastures* can be supplied or downloaded from our website: <http://northallbaptistchurch.org/>

✉ Ruth Cox Tel: 07791 425625

St Mary's Village Carnival



Tea Tent

The carnival was really busy and thankfully the weather remained dry – this was great news for the tea tent!

We took our first order around 10:00 am and didn't stop selling until just after 16:30 with constant queues all day. Our cake donations included some new recipes as well as the 'old favourites', all of which went down exceedingly well (as a famous cake brand would say!). Our fantastic volunteers worked tirelessly in order to meet demand and we can't thank them enough. This includes those who organised the marquee, water and electricity supply plus all the volunteers who served throughout the day. This allowed us to provide a fabulous tea tent for 2022; it was a brilliant day which raised £2,038 making this our best year to date!!

☞ Sue Browns

Best Dressed House Competition

A VERY BIG THANK YOU TO EVERYONE, on the Carnival Procession route, who decorated their houses this year. They made a really colourful sight with all the bunting and flags.

To qualify for the cup or a gold, silver or bronze medal, the houses had to be decorated in the theme of "Love Our Planet".

We were very disappointed that there were only three entries in Edlesborough!! Competition was fierce in Eaton Bray and the judges had difficult decisions to make on Saturday morning.

It was a joy to meet the entrants and present the medals as follows:

Edlesborough

Cup and Gold Medal Rose Cottage
Gold Medals 21 Eatongate Close, 76 Moor End

Eaton Bray

Cup and Gold Medal 130 High Street
Gold Medals 27 Moor End, 21 Moor End, 1-3 Moor End,
114 High Street, 9 High Street, 8 High Street, The Vicarage
Silver Medals 23 Moor End, 42 Moor End, 2A Moor End,
103 High Street, 81 High Street, 96A High Street, 42 High Street

Best Dressed Business

Cup and Gold Medal Edlesborough Flower Shop
Gold Medal Janes
Silver Medal Heirloom, Flicks and Bangs
Bronze Medal Nisa

Many thanks to Celia, Anne, Candy and Pat for their help and support with the judging. Not an easy task this year!!

I am sure we would all like to say a big thank you to Mark, all the Carnival Committee and the many volunteers for all the work they put in during the year. It is an enormous undertaking to organise such a large event and it was a wonderful day.

☞ Margaret Jones

Edlesborough W.I.



Our June meeting commenced with the minutes of May's meeting agreed and signed and items of interest shared.

Our guest speaker for the evening was Paul Rabbitts and the topic, Leighton Buzzard in 50 Buildings.

Paul is a very experienced speaker and what might have been a very 'dry' subject was most entertaining and the talk, supported by slides, was over before we knew it.

In Leighton Buzzard there are 122 listed buildings, 2 Grade I and 2 Grade II. For the purpose of the talk the buildings chosen were mainly built before 1700.

The following were of particular note. St Mary's Church, Old Linslade, where the old medieval town began and the 13th century All Saints Church, Church Square, which has no foundations!

Of course, Market Cross in the High Street is very well known and dates from 1453.

After churches we have numerous public houses, one of which, the popular Globe Inn, on the canal, dates from the 17th Century.

The Old Workhouse, 1835, Grovebury Road gets a mention as does The Cedars School 1855. Mary Norton, author of The Borrowers originally lived there.

Paul concluded his talk with a mention of his Most Hated building – McDonalds!

✍️Caroline Colleran

At the July meeting we had Louise Enchcomb and Ann Smiles from the RDA Riding Disabled Association Gaddesden to talk to us about the huge benefits that people with disabilities gain whilst interacting with their ponies. Established in 1974 they get a little financial help but are mostly self funded and their activities get strong approval by the medical association. It costs around £100,000 a year to run.

Interacting with their 6 ponies and their pony simulator riding or grooming can benefit both physically and mentally. It can help posture, communication and the development of social skills.

They have a very varied programme of activities and children start at 4 years old. Physically it can help to build up a core strength and mentally just spending time with a pony can help with anxiety, depression and dementia.

Their ponies are very well trained and patient as sometimes they may have to stand for 15 mins where a person is struggling to master their achievement.

Covid had a huge impact as of course it's an activity where you cannot social distance from your participant. They are currently operating at 50% of pre covid figures.

They fund raise with quizzes, raffles and auctions.

This was a very enlightening and interesting talk, the ladies brought in some of their fleecy saddle liners and reigns that help to calm and comfort their participants.

We then had our monthly raffle, birthday plants were given out and we caught up with our friends with our usual refreshments.

Meetings are held on the second Tuesday of the month at the Memorial Hall at 7.30 pm. New ladies are always welcome.

✍️Jane Jones

Leighton Aerials

Established 1970

For all your aerial
and satellite needs
call Colin on
01525 374742



James B Chadburn FBHI Fine Antique clocks & Barometers

Specialist in repairs & restorations.

Valuations & clock finding service.

Advice & assistance on formation & disposal of private clock collections.

Quality clocks/barometers Bought & sold.



Telephone 01525 221165

Mobile 07790 000629

E-mail: info@jameschadburn.com

NG AUTOS



MAKING YOU AND YOUR CAR HAPPY

CAM BELTS • MOT'S • MOT REPAIRS • HEAD GASKETS
AIR CONDITIONING • RECOVERY/BREAKDOWN
DIAGNOSTICS SERVICING • BRAKES • SUSPENSION
CLUTCHES • GEARBOXES • TYRES • WHEEL BALANCING
WHEEL ALIGNMENT COLLECTION & DELIVERY

CALL NICK OR GARY

01525 220850 OR 07972 198615

SPARROW HALL FARM, LEIGHTON ROAD,
EDLESBOROUGH LU6 2ES



Reception



Service Bays



MOT Station



**'They are like trees growing...
they keep on bearing fruit'**



**Dagnall C of E school is
a nurturing and inclusive
learning community,
situated at the foot of the
Chiltern Hills.**

Ofsted 'good' (June 2018):

"A positive learning environment where pupils are exceptionally well cared for and nurtured."

SIAMS (July 2018):

"The school is outstanding at meeting the needs of all learners."

We offer a unique, family feel where children benefit from small class sizes and personalised learning. We provide a creative environment where children feel safe to challenge themselves and to develop their love of learning.



SPACES AVAILABLE

To arrange a visit please call: 01442 842473
or visit: www.dagnall.bucks.sch.uk email: office@dagnall.bucks.sch.uk



Good

Edlesborough Primary Academy was labelled as "solidly good" by a trained HMI as part of a self-commissioned external review in November 2021.

"The school is going from strength to strength. The school is focused on outcomes, the curriculum is now scaffolded and pupils want to learn."

Trained Ofsted Inspector



EDLESBOROUGH
PRIMARY ACADEMY

Inclusive education that inspires inquisitive learners

01525 220431 · EPAManager@epa-primary.org · epa-primary.org

Edlesborough Primary Academy, High Street, Edlesborough, Dunstable, Bedfordshire LU6 2HS

Edlesborough Primary Academy is part of the Knowledge Schools Trust.



The Gentleman Gardener

Let your local RHS qualified gardener make your garden beautiful, from simple garden maintenance to total redesign of your garden.

Please call Barry on
01525-222451 or
07541196384

to pop round for a free chat.



**A McClelland
Pest Control**
FOR FAST RESPONSE CALL:
Mobile 0777 494 8415
Office 01582 872158

*specialists in: wasps - bees - ants
hornets - fleas - cockroaches - bed
bugs - pigeons - magpies - rabbits
rats - mice - moles - squirrels
foxes - mink - feral cats*



UNMARKED VEHICLES

**For further information please call or email
amcclellandpestcontrol33@gmail.com**



TODDINGTON

INDEPENDENT FINANCIAL ADVICE



DO YOU NEED FINANCIAL ADVICE?

We can help you to review your current or proposed,

**Mortgages, Insurances, Pensions & Investments, Equity Release, Inheritance Tax,
Wills and Trusts, or a general review of your current position?**

'As a mortgage is secured against your home, it may be repossessed if you do not keep up the mortgage repayments. The financial conduct authority does not regulate tax and estate planning or will planning'

**Unlike some TV adverts we don't charge a fee for equity release, so no broker fees
added to your loan!** 'Equity released from your home will be secured against it'

LOCAL OFFICE: Toddington

**Contact: Philip Hadlow
Tel/Fax: 01525 874100
Mobile 07768 277 532**

**info@toddingtonifa.co.uk
www.toddingtonifa.co.uk**

**Free Will with Investments & Pensions placed through
us of over £50,000 and within 6 months of investment
Talk to us for a free initial consultation**

Toddington Independent Financial Advice Ltd is authorised and regulated
by the Financial Conduct Authority.

Registered office: The Stables, Griffin Farm, Conger Lane, Toddington,
Bedfordshire, LU5 6BT

Registration Number: 760687 Company Number: 9931606

WAGGING

wonderful dog grooming

Here to take care of
your mucky pup!

Your local dog grooming
service in Eaton Bray

1-2-1 care for your dog

NO cages!

07580 343396

www.waggingwonderful.co.uk

info@waggingwonderful.co.uk

CDM Builders Ltd
07984086029

GENERAL BUILDING
NEW HOMES
EXTENSIONS
CONSERVATORIES
ALTERATIONS
BRICKLAYING
GROUNDWORK
PATIOS
DIGGER AND/OR DRIVER FOR HIRE

With over 20 years experience in the building
trade

All aspects of work undertaken by our own
professional tradesmen to a very high standard

Please contact Clive for a free quotation
T: 01525 222605 M: 07984086029
Email: Clive.munt@hotmail.co.uk

 **Stoten Gillam**
chartered accountants
chartered tax advisers

Our aim is to provide an outstanding
professional, cost effective and
friendly service

- ✓ Established over 50 years
 - ✓ Traditional values with forward thinking and modern technology
 - ✓ Full range of business and personal accountancy and tax services
 - ✓ Latest cloud software
 - ✓ Free initial meeting
- 
- 
- Tel: 01582 608601**
99 High Street South,
Dunstable, LU6 3SF

Contact us today:
enquiries@stotengillam.co.uk
www.stotengillam.co.uk
 @stotengillam

 **Nimby Pest**
WILDLIFE MANAGEMENT

...for all your pest solutions

Peter Tong
(RSPH Level 2)

01525 220653
07958 669706

Email: peter@nimbypest.org.uk
www.nimbypest.org.uk





All Aspects of Pressure Washing

- Roofs cleaned and coated
- Block Paving Refurbished
- Driveways/Patios/Pathway Cleaning
- Building Fascia/Cladding Cleaning
- Gutter Vacuuming
- Fascias & Soffit Cleaning
- Graffiti/Chewing gum removal
- Conservatory Cleaning

0800 298 5883

www.greatoutdoorscleaning.co.uk



FREE INITIAL CONSULTATION

**ALL ACCOUNTING,
PAYROLL AND TAXATION
SERVICES COVERED**

Specialising in New Business Start-Ups

- Fixed Fee Quotes
- Unlimited Email and Telephone Support
- Back Office Solution
(dealing with your back office accounts function enabling you to focus on the rest of your business)

Please contact us for more information...

Gable End, Sparrow Hall Business Park, Leighton Road, Edlesborough. LU6 2ES

Call us on... 01525 229 539

enquiries@rileyaccounts.co.uk • www.rileyaccounts.co.uk

@RileyAccounts • Also on

"YOUR LOCAL ACCOUNTANT"



- Parties** **Wedding Receptions** **Stage Productions**
- Fitness Classes** **Business Meetings** **Beer Festivals**
- Film Shows** **Club Meetings** **Keep Fit** **Quiz Nights**

Eaton Bray Village Hall

- Capacity for 220 People** **Parking for 70 Cars** **Meeting Room** **Countryside Views**
- Bar Facilities** **Kitchen Facilities** **Full AV Facilities** **Baby Changing** **Wheelchair Access**



For bookings or enquiries call: 07975 797 202
email: bookings@ebvh.co.uk

www.ebvh.co.uk



All Trees & Hedges

Reliable & friendly service • Family run business
Competitive prices • Qualified advice • Fully Insured

Tree work undertaken

Tree felling • Precision dismantling • Crown reduction
Crown thinning • Crown lifting • Formative pruning
• Stump grinding • Stump removal
Deadwooding • TPO / conservation area work

Hedge work undertaken

Hedge reduction • Hedge planting • Hedge trimming
Shrub clearance • Hedge laying

Other Services

Fencing • Green Waste Recycling • General
Garden Maintenance • Tree Lighting • Logs / Kindling

CALL NOW ON:

07701 094 934

01525 220 823

E: info@alltreesandhedges.com

W: www.alltreesandhedges.com



Your local

GUTTERBUSTER

cleaning & repairing your gutters

01442 874540
07749 977997

adam@localgutterbuster.com

Laptop & Computer

Server, Printer, Apple, Setup, Repairs,
Data recovery, Internet, Wireless, Network,
Virus infection, Home/Office computer problems.
Services from £40.

Your local IT support, 7 days services, we visit you
No Fix - No Fee
Qualified, Experienced
PClaprepairs@gmail.com
01525 306316 – 07925 338435

Jason Owen

Quality Painting & Decorating

Dagnall based decorator with over 35 years
experience. Free quotes, friendly and tidy
service.

0790 179 8419
jasonowen61@hotmail.com



Pampered Pups

Mobile dog groomers

Call to book an appointment
07394 672646
pampered.pups8@gmail.com
www.pamperedpupsuk.com

We come to you
No Mess
No Stress



Grooming Washing Drying Nail Clipping

Eaton Bray Cricket Club



It's all going rather well. A mix of youth and experience performing in all departments.

Results

June 11th. Cranfield 167 a/o. James Flecknell 4-23. Eaton Bray 1st XI 165 a/o. Andy Norris 47. Cranfield won by 2 runs.

June 11th. Wolverton Town 144 a/o. Dave Emerson 5-17. Eaton Bray 2nd XI 145-1. Darren Kerins 60 n/o Glenn Hearn 50 n/o. Eaton Bray won by 9 wickets.

June 12th. Waresley 240 a/o. Dave Emerson 3-27. Eaton Bray Sunday XI 241-8. Charlie Hosking 75. Eaton Bray won by 2 wickets.

June 18th. Printers 234-9. Euan Palmer 5-28. Eaton Bray 1st XI 195-7. Andy Norris 57. Printers won by 39 runs.

June 18th. Sher-e-Punjab v Eaton Bray 2nd XI Abandoned rain.

June 19th. Eaton Bray Sunday XI 169 a/o. Andy Norris 57 Euan Palmer 55. Old Warden 74 a/o. Syed Shah 3-13 Euan Palmer 3-19. Eaton Bray won by 95 runs.

June 25th. Westcroft 195 a/o. Charlie Hosking 5-18. Eaton Bray 1st XI 163 a/o. Paul Harris 50. Westcroft won by 32 runs.

June 25th. Eaton Bray 2nd XI 149-9. Shenley Church End 95-0. Abandoned rain.

June 26th. Harrold 255-6. Eaton Bray Sunday XI 89 a/o. Harrold won by 166 runs.

July 2nd. Eaton Bray 1st XI 232-7. Andy Norris 91. North Crawley 143 a/o. Ollie Harris 3-32 Nick Pearson 3-33. Eaton Bray won by 89 runs.

July 2nd. Eggington 101 a/o. Adam Raspass 3-18 Ian Jones 3-26. Eaton Bray 2nd XI 102-3. Eaton Bray won by 7 wickets.

July 3rd. Eaton Bray Sunday XI 166 a/o. Junaid Ashiq 51. Queens Park 138 a/o. Ollie Harris 3-24. Eaton Bray won by 28 runs.

Village T20 Results

June 9th. Eggington 144-7. Stefan Bennett 3-18. Eaton Bray Outlaws 145-2. Paul Harris 54 n/o. Eaton Bray won by 8 wickets.

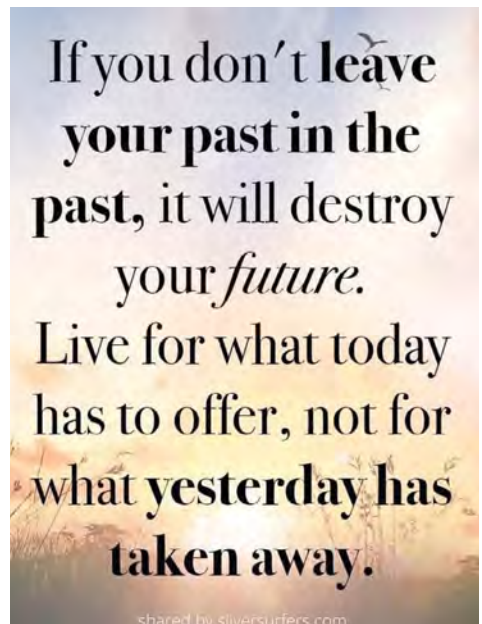
June 16th. Studham 112-7. Euan Palmer 3-15. Eaton Bray Outlaws 117-2. Wes Hosking 74 n/o. Eaton Bray won by 8 wickets.

June 23rd. Gt Gaddesden

Eaton Bray Cricket Club are always on the hunt for new players of any age or ability. We run 2 senior teams in the FCCL on Saturdays and 1 in the Beds Sunday League. We also have a side in the newly formed Village T20 League played midweek. The club have a very good junior section with 6 teams at age group U9 2xU11 2xU13 and u15. Also new to this season is a Ladies Softball Team.

The club would like to thank our sponsors Meadow Marquees, ECL Howard Watson Smith LLP, Topps Tiles, SMSS Ltd and the Focus Magazine for their continued support.

If you would like to be part of a progressive family friendly club please contact us via Facebook or Twitter @EatonBrayCC. Please enjoy your cricket with Eaton Bray in 2022.



Eaton Bray History

Moor End Mill Eaton Bray (courtesy of the Bedfordshire Archives)



43 Moor End - Moor End Mill House July 2012

Moor End Mill survives as a four-square 19th century house and an interesting water feature in the garden, preserving the mill stream and the spot where the waterwheel once stood. Historically the mill was in Eaton Bray for most of recorded history but the boundary changed at the end of the 20th century to follow the line of the old mill stream and the mill house and the site of the mill is now in Edlesborough and so in Buckinghamshire. It is interesting to note that the Manor of Eaton Bray had no mills recorded within it in 1086 whereas Edlesborough had two; perhaps one of them was at or near the later Moor End Mill.

A survey of the Manor of Eaton Bray made in 1646 also lists two mills at Moor End, though it is likely that this referred to two mill stones under the same roof. Accounts from 1881 to 1886 show that the mill was repaired and new buildings erected. At the end of the 19th century and beginning of the 20th century, Lord of the Manor of Eaton Bray, Arthur Macnamara, exchanged various buildings and pieces of land with Pedley Settled Estates. One of the properties exchanged was evidently Moor End Mill because when the Eaton Bray holdings of Pedley Settled Estates were put up for sale by auction in October 1915, Moor End Mill formed Lot 26. It was described as follows:

A VALUABLE FREEHOLD PROPERTY

Of about

25a. 2r. 23p.

Comprising

Moor End Mill, Premises and Land

Including

A Double-fronted Residence

Next the Edlesborough Road, of brick elevation, two stories high, with slated roof, and containing: ON THE UPPER FLOOR – Four Bed Rooms and a Dressing Room.

ON THE GROUND FLOOR – Dining Room, Drawing Room, Kitchen, Scullery and Dairy; Outer Wash-house and Store Room, with Loft over; Yard, small Flower Garden in front and Garden in rear.

Corn Mill

Adjoining, brick and timber-built, and tiled, of three floors, with Shafting, Overshot Water Wheel, Pit Wheel and Gearing. Brick and Tile Engine and Boiler House with 12 h.p. Beam Engine and Harrison and Clayton's Boiler.

Farm Premises

Brick and timber-built and tiled and slated, of large Barn, Nag Stable and Coach-house, Cart Stable, Cow House, Meal House, Cattle Sheds, Piggeries and Fold and Rickyards. Together with

Meadow and Arable Land

The land comprised 25 acres, 2 roods, 23 poles including 7 acres, 17 poles of pasture and 17 acres, 2 roods, 19 poles of arable. The tenant was James Bunker.

The lot was withdrawn. The Rating and Valuation Act 1925 specified that every building and piece of land in the country was to be assessed to determine its rateable value. Eaton Bray, like most of the county, was assessed in 1927 and the valuer visiting the mill found it owned and occupied by A. Bunker. He may have bought the place by private treaty around the time of the auction or some time later. Directories for Bedfordshire were not published every year but every few years. Kelly's Directory for 1885, 1890, 1894, 1898, 1903, 1906, 1910 and 1916 lists James Bunker as miller at the wind, steam and water mill at Moor End. Directories of 1920, 1924 and 1928 list Albert Bunker. The last few directories for the county, 1931, 1936 and 1940 list him as corn merchant instead – clearly he had ceased to mill, for reasons which will become obvious below.

The valuer commented: "Street lamp in garden" and "Lovely rock and water garden below old water wheel" – things have evidently not changed very much. He listed two living rooms, s kitchen, s scullery, s pantry ("nice"), four bedrooms, and a bathroom. He described the mill outside as derelict and partly used as a store. Other outbuildings included a brick, weather-boarded and slated garage ("poor"), a plant shed running the house's electric lighting and a coal shed with a loft over. He commented: "Was house and mill but burnt down May 1924" and "Enormous but of little use".

There was a "Useful Homestead worth £20 if properly used". It comprised: a brick, weather-boarded and slated meal house with a loft over; a brick, weather-boarded and slated stable for four; a cow house for five used as a piggery all with a loft over; a brick and tiled hen house; four brick, weather-boarded and slated piggeries; a large brick, weather-boarded and tiled barn used as a meal house; a weather-boarded and thatched three bay open cart shed and a brick and slated three bay open cart shed. There was a young orchard "all prunes six years too young".

The fire in 1924 is well reported in The Luton News of 22nd May. "Moor End Mill, a three-centuries old mill at Eaton Bray, owned by Mr. Bert Bunker, was destroyed by fire after being struck by lightning during the thunderstorm on Sunday evening [18th May]. Mr. Bunker's house, which almost touches the mill, was only saved by prompt action on the part of the firemen".

"The torrential rain which accompanied the storm had caused flooding in front of the

mill and as the water commenced to pour into the doorway, Mr. Bunker and his son, Mr. Lawrence Bunker, left the house to endeavour to rectify the matter. Mr. Bunker went into the mill and was trying to prevent the water from entering, while the son was using a fork to clear a drain to allow the water to run into the mill stream”

“The worst of the storm seemed to have passed, when a brilliant flash of lightning, accompanied by a loud crack of thunder, came from immediately overhead. Mr. Bunker junior had his FORK WRENCHED FROM HIS HAND, but he was quite uninjured, while a number of tiles were hurled from the roof of the engine house at the base of the chimney stack, which is about 50 feet high. Mr. Bunker junior looked up at the stack as he called to his father “Tiles are falling, father”, and noticed that bricks had been thrown from the top and that a hole had been made a few feet down”.

“Both men rushed into the building to ascertain what further damage had been caused, and Mr. Lawrence Bunker, on reaching a store room on the second storey of the engine house found a large heap of empty sacks on fire. Mr. Bunker senior, who had not noticed the direction in which his son went, tried in vain to find him, and spent a few very anxious moments before he discovered him near the sacks, trying to overturn a tank of water”.

“Realising that the fire was beyond their control, Leighton Buzzard Fire Brigade received the call at 8.50. The Leighton Brigade received the call as from Edlesborough parish and, as they have no arrangements with the Council for that district, according to their usual custom, declined to turn out. A few minutes later the call was corrected, and the brigade then left under Captain Percy Payne. At Stanbridge and again at Eaton Bray they encountered floods on the roads to a depth of 18 inches, and at times progress was irritatingly slow”.

“The Luton Brigade fared little better. With No. 2 engine they made good time to Dunstable, but at Church-street bridge a car which had stuck in the flood there had to be assisted out before the brigade could pass”.

“In the meantime the situation at Eaton Bray had become desperate. Assisted by a breeze, the flames spread rapidly through the mill. The engine house, a modern brick structure, was able to escape with a gutted storey where the outbreak began, but the older building with its massive oak beams, rafters and floors offered little resistance to the flames. From these, and from many tons of burning grain and offal, the heat was intense, while the smoke was almost suffocating. At one period, when the roof collapsed and the upper floor gave way, the flames shot up as high as the top of the stack”.

“There was no lack of assistance, and there were many who set to work with tireless energy to do all possible to resist the advance of the flames. The weight of machinery on the second floor made it very dangerous to enter the building, even if much could have been saved, and it was soon necessary to turn attention to the house, which stands but a few feet from one portion of the mill. Windows were removed and furniture was passed out and placed in an adjoining meadow, or neighbouring houses. Just after this operation had commenced the electric light failed through the roof of the engine house collapsing on to the dynamo. Candles were brought into use, and their feeble light was augmented by the glow of the burning building. The corner of the house nearest the mill was then discovered to be hot, window frames began to blister and the chimney

twisted perceptibly. The bathroom wall became red hot, the woodwork inside was smouldering and scorching, and at the very instant when the crowd were expecting to see a burst of flame, Luton Fire Brigade dashed up. Their arrival was greeted with loud cheers from the crowd of villagers”.

“Plenty of water was available from the mill stream, and it was but the work of moments before hose had been run out and three jets of water were playing on the hot walls”.

“A few minutes later Leighton Buzzard Brigade arrived, and attention was given to the mill. Both brigades used full pressure and by midnight the flames had been got so well under control that the Luton Brigade was able to leave. Leighton Buzzard Brigade remained until daybreak, but throughout the whole of Monday masses of charred corn, offal and sacks continued to smoulder”.

“During the earlier stages of the fire, when the ground floor began to get hot, large numbers of rats left the building and ran across the road between the legs of the spectators to the fields and other buildings. In the mill were three cats, but on Monday only one of these had been accounted for”.

“When daylight came only the walls of the engine house and the stack had escaped disaster. As previously mentioned, a hole in the stack marked the course of the discharge, while the engine house, with the electric plant - installed only a few weeks previously to light the mill and the house – had lost its roof. A few charred pieces of timber indicated what had been the roof of the mill, but in places the 16th CENTURY OAK BEAMS (one of them bore the date 1540) had burned so slowly that the interior was intact. At the end nearest the house, beams which were originally a foot square were reduced to half that dimension, but were still able to support the weight of a heavy crushing machine on the second storey. In front two iron chains fastened to the blackened upright posts of a loft doorway suspended in its proper position the iron loading chute, but behind it the floor had disappeared. A few pieces of burned wood marked the position of the office on the ground floor. Still in its place, but with the floor burnt underneath it, was the safe, which had successfully resisted the intense heat and enabled the contents to be recovered intact. Near it was an old heating stove and a heap of ashes marked the space that had been occupied by a desk”.

“Moor End Mill is, at a moderate estimate, 300 years old, and has been held by the Bunker family for three generations. Water power has always been used, and the wheel was badly damaged by the fire. We understand the premises were insured”.



Remains of Moor End Mill July 2012

Aug/Sep 2022 at the Grove



Film

Minions: Rise of Gru (U) 1, 5, 6, 13, 15 Aug
Elvis (12A) 1, 4, 5, 6 Aug
Boonie Bears: Back to Earth (PG) 4 Aug
The Lost Girls (15) 4 Aug
Bob's Burgers: The Movie (PG) 6 Aug
Westlife - Live from Wembley Stadium (Cert 12A) 7 Aug
Brian & Charles (PG) 8 Aug
Father Stu (15) 8 Aug
Everything, Everywhere, All at Once (15) 13 Aug
The Power of the Dog (12A) 15 Aug
Major (15) 15 Aug
Bullet Train (Cert TBC) 16, 29 Aug
The Railway Children Return (Cert TBC) 17, 20 Aug
Benediction (12A) 17, 22 Aug
Thor: Love & Thunder (12A) 13, 18, 20 Aug
Where the Crawdads Sing (Cert TBC) 18 Aug
2022 Maastricht Concert André Rieu: Happy Days are Here Again! (Encore Screening) 28 Aug
DC League of Super-Pets (PG) 29 - 31 Aug
Straight Line Crazy (Encore Screening) 1 Sep
Prima Facie (Encore Screening) 15 Sep
The Forgiven (Cert TBC) 26 Sep

Popular Music

Ireland The Show 19 Aug
The Nick Ross Orchestra "The GLENN MILLER & RAT PACK Era" 27 Aug
One Night of Billy Joel - The Piano Man 3 Sep
Rave On: The Rise of Rock and Roll 4 Sep
The Drifters 8 Sep
Luther 2022 11 Sep
That'll Be The Day 2022 16 Sep
Paul Hopkins' Roy Orbison & the Traveling Wilburys Experience 23 Sep
Into The Groove 24 Sep
The Chicago Blues Brothers - A Night At The Movies 25 Sep
The Wonder of Stevie 27 Sep
Stars of Irish Country 2022 28 Sep
Nathan Carter and his band 29 Sep

Comedy

Dave Gorman: Powerpoint to the People 21 Sep
Al Murray The Pub Landlord: Gig For Victory 30 Sep

Variety

Queenz 1 Oct

Ticket prices vary; for more information or to book, call the Box Office on 01582 60 20 80 or visit the website at www.grovetheatre.co.uk.

Quiz Answers (see page 37)

1. 1985
2. Alison Moyet
3. Back in Black
4. A-ha
5. I Want to Break Free
6. Never Gonna Give You Up
7. Saving All My Love For You
8. Do They Know It's Christmas?
9. The Proclaimers
10. Adam and the Ants

Edlesborough Flowers



Flowers For All Occasions

Hand Tied Bouquets

Flower Arrangements

Novelties & Gifts : Candles & Diffusers

Tel: 01525 221920

www.edlesborough-flowers.co.uk

Email: info@edlesborough-flowers.co.uk

2 High Street Edlesborough LU6 2HS





Nutrition Shouldn't be Complicated

ALL ABOUT ME
FITNESS

Every time you open a magazine or log on to social media, there's a new celebrity fad diet that's doing the rounds. The problem is our own impatience and the desire for overnight success leaves us feeling pushed towards these crazy 'get rich quick' kind of schemes just to get some sort of results.

But should that be the answer?

In truth, probably not! Whilst diets work in the **SHORT TERM**, you'll most likely discover that's where the results will stay. In time you'll find the results will wear off and you'll probably be back to square one.

So what can we do?

Ask yourself what's better, lose 6lb in the next 2 weeks with the probability of regaining those, and more, in the following month or losing 6lb over (say) 6 months but being able to keep the weight off forever?

You see, nutrition doesn't have to be complicated. In fact, we can make a few smaller, simple changes that will not only improve your diet but also make your results far more sustainable.

Start by adding the 4 simple things, below, to your meals to **INSTANTLY** improve your diet!

1. Fruit and Veg

Not only does fruit and veg add more fibre to your diet (which will help fill you up) it also adds food volume whilst generally keeping your calories lower. An abundance of fruit and veg is vital for a healthy diet.

2. Protein

It's essential for recovery and muscle building but it also improves the satiety of a meal which means you'll stay fuller for longer (giving less reasons to grab a snack between meals).

3. A break

Putting your fork down in between bites helps us to eat less as you become more attuned to your fullness signals. This means you're more likely to stop when you're satisfied and not overeat.

4. A glass of water

Obviously this is vital to help us hydrate better but it also gives us a reason to pause and slows your meal time down.

Remember, keep the changes simple and whilst the results might be slower they will 100% last longer.



✍️ Andy

All About Me Fitness

<http://allaboutmefitness.co.uk/>

21a High Street, Leighton Buzzard

Sign up for our free 30 day gym trial by calling 01525 219800



Westrope Butchery
Makers of Bunkers sausages

**17 The Rye
Eaton Bray
LU6 2BQ
07805 082787**

Opening hours

Tuesday - Friday 10am - 4.30pm

Saturday 9:30am - 4pm

Sunday 10am - 2pm

**Find us on social media - The Westrope Butchery
Local farmers & family butchers
www.thewestropebutchery.com**

All for love - You are not alone



We here at Butterfly Funerals are an award winning, independent family run company of funeral directors.

We have been servicing Beds, Herts, Bucks and the surrounding areas for over eight years and we have over 30 years of experience.

We take care of every detail before, during and after the service of your loved one.

Let us give your loved one the final farewell they deserve and you and your family the support you need.

- Cremation and burial options
- Pre-planning and payment options
- 24/7 Chapel of Rest visits
- Home visits and 24/7 call out
- New tech audio and visual services available
- Funeral packages for all budgets

Owners, Teresa and Pete,
live in Eaton Bray

Butterfly Funerals, 39 Elm Avenue, Caddington, Luton LU1 4HS
Email teresa@butterflyfuneralsLtd.co.uk Visit www.butterflyfuneralsLtd.co.uk
Tel: 01582 968130





PARAMOUNT

PLUMBING & HEATING

- BOILER INSTALLATIONS WITH A 10 YEAR WARRANTY
- BOILER SERVICE & MAINTENANCE • CENTRAL HEATING SYSTEMS
 - BATHROOM INSTALLATIONS • POWER FLUSHING
 - LANDLORD SAFETY CERTIFICATES

PLEASE CONTACT US FOR A FREE QUOTATION



T: 07917 054045

E: INFO@PARAMOUNTPLUMBING.CO.UK



EMS

EVERY MORTGAGE
SOLUTION[™]

- Residential Mortgages
- Buy to Let
- Commercial Mortgages
- Equity Release
- Life Assurance
- Local Knowledge
- Bespoke Personal Service
- Fee Free Advice

Contact:

emma@everymortgagesolution.co.uk

Tel: 01525 222928

www.everymortgagesolution.co.uk

Every Mortgage Solution Ltd is authorised and regulated by the Financial Conduct Authority, Registration Number 837504. Company registration No. 04351192

YOUR HOME MAY BE REPOSSESSED IF YOU DO NOT KEEP UP REPAYMENTS ON YOUR MORTGAGE.

WHITE WATER

Driveway & Patio Cleaning



01582 471692 | 07738 434787
email: info@white-water.co.uk
www.white-water.co.uk

OUZEL CONTRACTING

Providing quality, experienced horticultural services to the villages

Services include:

- Year-round Garden Maintenance
- Mowing and Lawn Care
- Hedge Cutting
- Bed and Border Maintenance
- Pruning, including Roses and Wisteria
- Planting Services
- Weed Control
- Leaf Clearance

Fully insured, fully qualified with 20 years' experience
Licensed waste carriers

For a free quote call Kieran on
07800 888120

www.ouzelcontracting.co.uk

CALVI COLLECTIONS

BESPOKE DINING & LIVING FURNITURE

Family business made in the UK



Unit 12 Eden Way, Pages Industrial Estate, Leighton Buzzard, Beds LU7 4TZ
Tel: 01582 663 673 Email: info@calvicollecion.co.uk

www.calvicollecion.co.uk

A SIMS
ELECTRICAL SERVICES

FREE QUOTES

DESIGN

INSTALLATION

TESTING

FRIENDLY & AFFORDABLE SERVICE

~ 07849 958200 ~
aaronsimsey@yahoo.com

New Worcester~Bosch Boilers Supplied and Fitted from just £1800

5-10 year warranty
System flush included
Finance available
Free Quotations

Google Business Review
5.0 ★★★★★

CMW GAS
Heating & Plumbing

Contact Chris:
07706077132
01525873129
www.cmwgas.com

Local business based in Toddington

KCS Services

Cleaning Floor Specialists
Carpets and Upholstery
Professional Window Cleaners
Reach and Wash System
Jet Washing
Commercial & Domestic
25 Years Experience

Jeremy Long
07798 650895 01525 797045
Jerrylong2601@gmail.com

Scan the code below to visit our Website

Get in touch - @KCSServices_



To us, it's not just another funeral. We care for your loved ones as though they were our own.

NEVILLE. Because there is a difference.

DUNSTABLE

Globe House, 84/88 High Street South LU6 3HD

t: 01582 320290

e: dunstable@nevillefuneralservice.com

www.nevillefuneralservice.com



Come for Coffee at St Mary's, Eaton Bray

For a warm welcome
and a cheering cuppa
each month in
St Mary's Church
Eaton Bray
10.30am - midday



1st Saturday of each month
(except July - 2nd Saturday)

We are based in Eaton Bray

YourNewBoiler.com[®]

A family firm, built on recommendation

Boiler On The Blink?

Call for a **FREE**, NO-OBLIGATION
Quotation Now

01525 620247



Proud Sponsors of EB LIONS U8's
Football Team



Web - www.YourNewBoiler.com // Email - rebecca@yournewboiler.com



BOSCH

PLUMBING & HEATING ENGINEERS

OUR SERVICES INCLUDE:

- General Plumbing
- Boiler Servicing / Breakdowns / Aga & Rayburn Servicing
- Full Boiler Installs & System Upgrades

We work on Oil, LPG & Natural Gas - We are members of Gas Safe & OFTEC

CONTACT JUSTIN

Mobile 07770 918101

Office 01525 220262

Email justin@prmechanical.co.uk

WWW.PRMECHANICAL.CO.UK

All major credit
cards accepted



NOW ACCEPTING NEW PRIVATE PATIENTS

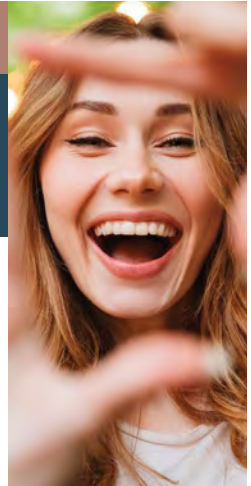
LOOKING FOR A NEW DENTIST IN LEIGHTON BUZZARD?

Cherry Trees Dental offers high quality dental care for adults and children in a relaxed environment.

Now under new management. Our services include everything from general & preventive dentistry to a wide range of cosmetic treatments, e.g. smile makeovers, implants.

Visit www.cherrytreesdental.com or call us on 01525 384894 to make a booking. Find us at 56 Soulbury Road, Linslade, Leighton Buzzard LU7 2RN

Be sure to quote 'FOCUS' when booking or calling please!



CHERRY TREES
DENTAL



A committee run pre-school set in Dagnall Village Hall for children aged 2 to school age

We operate five mornings a week from **9:15 - 12:15**



Ofsted Comments

- Staff are consistently kind and caring which supports children to develop confidence and resilience
- Teaching is consistently good and children's safety is given the highest priority
- Children learn good manners and know how to treat each other with respect

If you think your child would be happy here please phone our Pre-School Leader, Ann Tobin on 07816 358 342

www.dagnallunderfives.co.uk



SGB GAS & HEATING

Gas | Heating | Plumbing
Boiler breakdowns | Newbuilds
Refurbishments

Over 25 years experience

Mob: 07734 958523

Tel: 01525 795156

Eaton Bray | Dunstable

Nikki, Phil & The Team Welcome you...
To the 500 year old Bell...clean & safe.



ROAST DINNERS AVAILABLE EVERY DAY TO EAT IN OR TAKE AWAY

The Bell in Studham

THE NATIONAL
PUB & BAR
AWARDS 2018
COUNTY WINNER



"For Food & Gifts we Love!"

Enjoy a TAKE AWAY: Hot & Cold Drinks/ Food & Ice Creams

RESERVATIONS: 01582 872460



Award Winning Pub with Great Views!" ...

www.thebellinstudham.co.uk

Dunstable Rd, Studham, Beds. LU6 2QG

info@thebellinstudham.co.uk Vegetarian & Vegan Dishes freshly prepared
ITALIAN & ENGLISH FOOD~DRINK~GIFTS~CHUTNEYS~JAMS~VOUCHERS~

FINANCIAL ADVICE MADE PERSONAL

WE CAN HELP YOU WITH:

Pension Planning | Investment Planning | Insurances | Mortgages
Equity Release | Inheritance Tax | Corporate Advice

Are you on track? Have you lost your way?
Why not meet with us to confirm you're heading in the right direction?

Please do get in touch for a chat.

We recognise that talking about money and finances is personal – sometimes sensitive. So it's reassuring to know that there's someone on hand who can help you address your needs, understand your goals and realise your dreams.

We offer a friendly and approachable service, backed by the strength and security of FTSE 100 company, St. James's Place Wealth Management; and being local means we're here to help whenever you need us.



KEVIN STANBRIDGE, Director

KS FINANCIAL ADVISERS

Associate Partner Practice of St. James's Place Wealth Management

Tel: 01525 643900 | Mob: 07854 484556 | Email: kevin.stanbridge@sjpp.co.uk
Rose Cottage, Leighton Road, Northall, Buckinghamshire LU6 2HA

KS Financial Advisers Limited is an Appointed Representative of and represents only St. James's Place Wealth Management plc (which is authorised and regulated by the Financial Conduct Authority) for the purpose of advising solely on the group's wealth management products and services, more details of which are set out on the group's website www.sjpp.co.uk/ products. The 'St. James's Place Partnership' and the titles 'Partner' and 'Partner Practice' are marketing terms used to describe St. James's Place representatives. KS Financial Advisers is a trading name of KS Financial Advisers Ltd.

H2SJP2129 01/22



“Lockers Park prepares boys for success in the modern world.”
Tatler Schools Guide

LOCKERS PARK



Join a Stay & Play Session

Children and their parents are welcome to join a fun lesson and play time in our Pre-Prep and meet our Reception Teacher and Headmaster.

Regular Stay & Play Sessions throughout the year.

Visit lockerspark.co.uk to book.

Excellent results | Enthusiasm for life

A purposefully small prep school for boys aged 4-13 | Boxmoor, Hertfordshire

Explore... Dream... Discover...

Travel Impressions are specialists in tailor-making holidays to destinations worldwide. If you are thinking of travelling to Canada, USA, Australia, New Zealand, Southern Africa, South America, Asia, India, Sri Lanka, China, Japan or within Europe, please call or email us.

We can help you create the best itinerary, as we offer:

- Personalised planning - we take the time to get to know you
- Friendly, honest advice from an independent travel agency
- Extensive experience to arrange every detail
- Using fully bonded tour operators
- No booking fees



Travel Impressions

A World of Experience

01442 890265



enquiries@travelimpressions.co.uk
www.travelimpressions.co.uk

Suite 4, George House, 64 High Street, Tring, Herts. HP23 4AF



Your home is much more than bricks and mortar. It's made up of the friendly neighbours, a like-minded community, and the finest local services on hand to truly make you feel at home. At Fine & Country, our local knowledge helps us truly understand the value of a home. We know the organic butcher, your next artisan baker, a trusted handyman, or a reliable mechanic for your vintage car.

Contact your local Fine & Country agent for unrivalled insight into your marketplace and a valuation of your property.

Fine & Country Edlesborough
65 Moor End, Edlesborough, Buckinghamshire, LU6 2HN
01525 222 333
edlesborough@fineandcountry.com
fineandcountry.com





Salvation Sound

Working together in Perfect Harmony



My husband and I have just returned from a coach touring holiday visiting the countries of the old Yugoslavia. In all we travelled to 16 countries visiting some more than once. It was a holiday full of adventure and drama not being allowed to enter a country because the coach did not have the documents that they demanded and at one time we were stranded in no man's land between two countries not knowing what was going to happen next. As you can see, the error was rectified and after much discussion we continued. An experience not to be missed, but sometimes scary too.

One of the countries we visited was the country of Bosnia. As with much of the old Yugoslavia, Bosnia has suffered greatly in the wars over the years, the recent being in 1992 when they fought against Serbia and Croatia, many of the cities and towns devastated by the carnage.

We visited the city of Sarajevo and were taken on a walking tour with a guide who told us of the history of this city pointing out and visiting various mosques and other traditions all found within this city. One of the things that he was emphasizing to us was the way that this city although diverse in its culture and tradition, still wanted to work together.

Although there are many sectors given over to various religious traditions, one of the hallmarks of this city is that all through its history everyone has worked together, fought together, and looked after each other.

As we reached the Jewish quarter, the guide related to us the story of how the city was under siege during World War Two. The Germans were closing in but the Jewish community stayed to fight alongside their friends whom they had for many years been working together with.

The guide's story told us of the Jewish heritage which is an integral part of Bosnian heritage as there is an indelible connection between the two. There are numerous examples that tell the story of this liaison. The most famous one is probably that of Sarajevo Haggadah.

The Sarajevo Haggadah is an illuminated manuscript that contains the illustrated traditional text of the Passover Haggadah which accompanies the Passover Seder. It is one of the oldest Sephardic Haggadah's in the world, originating in Barcelona around 1350.

The Jews all over the world cherish the tradition of retelling the story of their exile

from Egypt. During the holiday of Passover, they read this story from a book known as Haggadah. This is a priceless book among many others that exist in the world but meant everything to the religious community. During World War II, the manuscript was hidden from the Nazis and Ustashe by the Museum's chief librarian, Derviš Korkut, who risked his life to smuggle the Haggadah out of Sarajevo. Korkut gave it to a Muslim cleric in a village on a mountain of Bjelasnica, where it was hidden in a mosque. There is no reason why the Nazis would travel up to a mosque looking for the manuscript and it stayed hidden until after the war was over.

As I was thinking about this story which greatly impressed me, it spoke to me about how as communities it is so important to live in harmony with each other. We are very fortunate that as villages we do work hand in hand in so many ways. It is good to share fellowship with each other whatever our religious tradition or not, we are bound together in community.

During the pandemic, people came together in helping each other through the very difficult period that we all experienced, coming out of it a stronger community.

This was the case in Sarajevo, the city became stronger community wise, and it is still holding the same principles today in 2022.

In Colossians 3: 14 the apostle Paul reminds: - *“And above all these put on love, which binds everything together in perfect harmony”*

Here are some words from a song that children from the Salvation Army Children's Choir have sometimes sung.

(Chorus)

'O, isn't it good to be as one, living in perfect harmony,

Sharing the good things God has done, God has done

Oh, isn't it good to be as one, living in perfect harmony,

Sharing the good things, God has done, God has done.

O, isn't it beautiful to be in perfect harmony,
The way the Lord wants us to be.

I feel that we should obey sharing everything together we shall stand' (Chorus)

Let us continue to work together for God,
sharing together in fellowship as God has asked us to do.

May God Bless you

✍️ Major Allison Gaudion

Eaton Bray Salvation Army



The Salvation Army, Eaton Bray

Programme

Morning Worship	Sunday 11.am
Coffee Morning (alternate weeks)	Tuesday 10.-11.30am
Home League (Ladies meeting)	Wednesday 2.30-3.30pm
Champions Club	Wednesday 6.15-7.15pm
Girls Night Out (1st Thurs of the month)	Thursdays 7.45 pm

For further information please telephone:
01582 471117 or 07779939794
Or contact us by email:
eaton.bray@salvationarmy.org.uk

Dagnall Weather Station (AONB)

Weather Conditions for June 2022

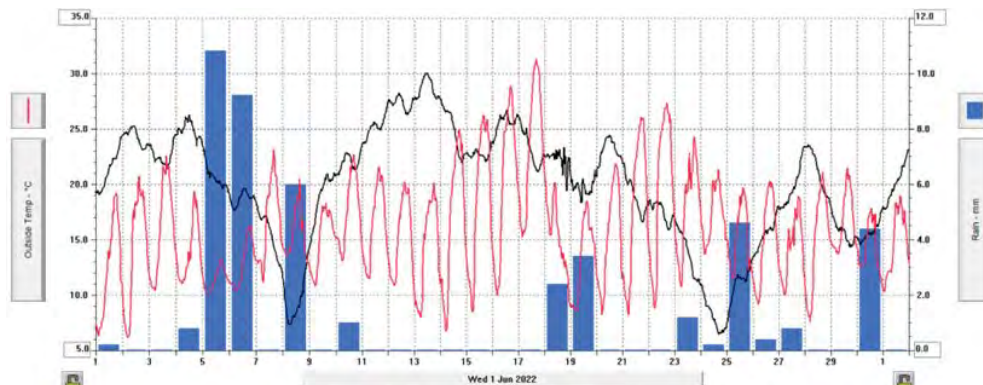
Elevation: 450 ft - Latitude: 51° 50' 13" North - Longitude: 0° 33' 34" West



June started with temperatures just about reaching the monthly norm. But, on the 4th, the barometer dropped along with the temperature and this was followed by rain on the 5th, 6th and 8th. Those three days produced 26mm rainfall, which was 60% for the total month. The temperature stayed around 20°C until the 14th when it started to climb, reaching a high of 31.5°C on the 17th. For the rest of the month, we were back to normal temperatures. June was the third dry month in a row with 45.3mm of rain. The whole three months saw only 118.5mm (4.66ins) of rain, whereas April, May and June 2021 had a total of 199.2mm (7.48ins).

	High	Date/Time	Low	Date/Time
Temperature:	31.5°C	17 June 16.00	6.1°C	2 June 15.00
Mean Temperature	16.0°C			
Dewpoint:	18.1c	17 June 19.00	5.0°C	2 June 05.30
Humidity:	98%	19 June 02.00	28%	16 June 16.30
Barometer:	1025.0mb	13 June 10.30	1001.5 mb	24 June 17.00
Wind Speed	33mph SSW	25 June 15.30	Months avg.	4.8 mph
Wind Chill:	31.1°C	17 June 16.30	6.2°C	2 June 04.30
Dominant Wind:	SSE			
Rainfall *T= total rain days and moisture. R= Actual rain				
*Rain Days: 14 (T), 14(R)	Wettest Day 5 June		10.80 mm	0.425ins
Monthly Rain:	Total	June 2022	45.3mm	1.783ins
Yearly Rain:	Total	5 Months	276.6 mm	10.890ins

June 2022
Temperature – Rain - black line is Pressure



For weather data 24 hours a day, updated every 15mins, this site forecast and much more, visit: www.dagnallweather.co.uk and http://bit.ly/weather_dagnall. If anyone has a question, comment or wishes to contact me please email: david@dagnallweather.co.uk or telephone: 01442 843883. Dagnall weather now has an app for your iPad & iPhone! Just go to the apple store, search for Wunderstation and follow the instructions to Dagnall Weather Station. Now updated every minute.

Your Photos

*Right: Lunch
by Adrian Welch*



*Below: Edlesborough Church
by Agnieszka Brozek*



Take on the Ultimate Animal Challenge these Summer Holidays at ZSL Whipsnade Zoo

New family event runs throughout school holidays at the UK's largest Zoo
Saturday 23 July – Sunday 4 September 2022

Families can put their speed, stealth and smarts to the test this summer, when they take on the Ultimate Animal Challenge during a winning day-out at ZSL Whipsnade Zoo. Bringing the whole family together in a battle of agility, memory and surprises, summer visitors to the UK's largest Zoo will be able to go head-to-head with other families to prove their place at the top of the tree of life. Find out if your family has what it takes to solve a puzzle as fast as a chimp, or sneak up on prey like a tiger. Discover which member of your family has the memory of an elephant and see how quickly you can dig for scorpions like a meerkat.



Once you have conquered the four animal challenges, head back to the Events Hub for the Ultimate Showdown, where your speedy, foraging skills will be put to test on a giant inflatable. The aim is to collect colourful balls faster than your competitors, while not getting bounced off your path!

Families who would prefer an accessible final round, can instead take part in the Ultimate Face-Off Challenge, in which each family has a race against time to forage for and assemble puzzle pieces to reveal a hidden animal. You can also create your own animal playing piece out of clay and then use it to beat your family members at a selection of animal board games.

Free with zoo entry tickets, the Ultimate Animal Challenge will give families the golden opportunity to team up, have fun together and take on the other 'packs' and 'herds' at the Zoo that day! All this, plus face painting, delicious food and drink, and fascinating animal talks about the special skills of the Zoo's species. There's even a zoo-tastic prize for the family who is top of the leader board at the end of the summer. Book your family's visit to ZSL Whipsnade Zoo now at zsl.org

Critically Endangered Chicks Successfully Hand-reared from Eggs at ZSL Whipsnade Zoo

Two critically endangered blue crowned laughingthrush chicks (*Pterorhinus courtoisi*) have been saved by their dedicated keepers at ZSL Whipsnade Zoo. Bird keepers at the conservation zoo stepped in and hand-reared the rare birds, after the laughingthrush chicks' parents stopped looking after their eggs. Taking shifts to maintain the intense care schedule, keepers simulated natural parenting patterns, turning the eggs five times a day while they were in the incubator, creating a nest for the newly hatched chicks to grow in and feeding them 12 times a day, until the birds were able to feed themselves.

Endemic to the forests and shrubland of China's Jiangxi Province, there are now thought to be less than 250 adult blue crowned laughingthrushes left in the wild, due to habitat loss and wildlife trade. The chicks are part of a Global Species Management Plan for the rare species, classified as Critically Endangered by the IUCN Red List of Endangered Species.

Deputy bird team leader, Claire McSweeney said: "We made their nest with coconut fibres and astroturf, and included twigs small enough for them to get their tiny feet around, as it is vital that they develop the muscles to grip things. We hand-fed the chicks a pureed mixture at first, but gradually weaned them onto a mixture of fruit and insects. Once they were strong enough, we started leaving food out for them so they could try eating independently. After about two weeks, once their eyes were fully open and their tail and wing feathers had come through, they began to sit on the edge of the nest, trying to flap. In the fourth week, all their remaining body plumage grew in, and we knew it was time for them to be released into the fledgling aviary, where they could start to explore their environment and practice flying from branch to branch."



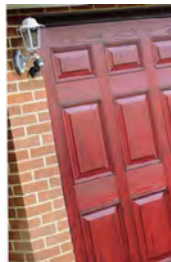


Premier Garage Doors & Gates



Quality Garage Doors

- ✓ Superb choice of designs in steel, timber and fibreglass
- ✓ Any size door made to your requirements
- ✓ Large selection of spares & fast repair service available
- ✓ New or existing doors converted to automatic
- ✓ Professionally fitted by own expert craftsmen
- ✓ Prompt free estimates & advice
- ✓ We cover all areas



(EST 1984)



Door & Hardware
Federation

raising standards



Unit 7, Sparrow Hall Farm, Leighton Road, Edlesborough LU6 2ES

01525 220212

www.premiergaragedoors.co.uk



SAME DAY
DELIVERY
ON IN STORE STOCK

JANES

BRING THIS WITH YOU TO
RECEIVE 'NEW CUSTOMER'
SPECIAL DISCOUNTS

FLOORING DIGITAL APPLIANCES CYCLES SERVICE



JANES

APPLIANCES

Washing machines, dishwashers, ovens, vacuum cleaners, kettles, coffee machines - all your home appliances.



JANES

SERVICE

Lawn mowers, washing machines, dishwashers, ovens, fridges, vacuum cleaners - even kettles - all repaired and serviced.



JANES

FLOORING

Carpet, laminate, Karndean, real wood floors - we have a large range flooring complemented by our experienced fitting service.



JANES

DIGITAL

TVs, BlueRay, DVD, sound systems, audio visual - our tech team will help get all your devices set up and installed.



JANES

CYCLE SERVICE & REPAIRS

Adult and kids bikes, wide range of accessories and service - all in one place to keep you on two wheels.



01525 220208



www.janesltd.co.uk



4-6 High Street, Edlesborough,
LU6 2HS.

