

FOCUS

April 2020

*Happy
St. George's Day
April 23rd*



**The local village magazine just for Us!
Eaton Bray, Edlesborough, Northall & Dagnall
Focus is online at www.thefocusmagazine.co.uk**

The White Horse *Eaton Bray*

Market Square
Eaton Bray
Beds
LU6 2DG
01525 220 231
www.eatonbraypub.co.uk



From the horse's mouth

The team at the White Horse would like to thank you for your custom and also draw your attention to our current offers:

From Tuesday to Friday lunchtimes enjoy main courses from £8.50 and two courses for £12.95

Tuesday to Thursday evening we offer two courses from £13

Sunday lunch is available as a main course only or a two course option from £16.75



Join us over Easter weekend

*Eat, Drink and relax
at The White Horse*

Due to the current situation re Coronavirus, some of our distributors may be unable to put the magazine through your letter box.

If you do not receive your copy we will make sure the magazine is available in St.Marys Church, Eaton Bray Stores and Edlesborough Post Office.

Many thanks, Focus Committee.

We also apologise for events advertised in this month's Focus that are subsequently cancelled.

NORTHALL BAPTIST CHAPEL

Chapel Lane, Northall

(just beyond the 30 speed limit signs on the road towards Leighton Buzzard)

Everyone is welcome to our Sunday worship each week between 11am and 12.30pm including tea/coffee and time to talk together.

For more information contact:

John Hazell 01525 218142

Email northallchapel@btinternet.com

Web: www.northallbaptistchurch.org

There has been a Baptist Chapel in Northall for more than 200 years. Today we continue to seek to worship God, serve him in our daily lives and support and encourage one another in the difficult and the joyful times.

The Focus Magazine Committee

Editor: Sally Siddons

34 Wallace Drive, Eaton Bray 221733

Email: sallysid@hotmail.com

Dagnall Representative: Richard Bamford

31 Dunstable Road, Dagnall 01442842344

Circulation Manager: John Plater

41 Church Lane, Eaton Bray 221095

Treasurer/Leaflet Enquiries: Ken Coates

10 The Nurseries, Eaton Bray 220868

Business Advertising: Sally Siddons

34 Wallace Drive, Eaton Bray 221733

Design and Layout: Tracey Moren
(Moren Associates Limited) 01525 229695

Printed by: Priory Press

Dunstable 01582 699851

Copy for publication to the Editor by the

10th of the month

Focus accepts no responsibility as to the accuracy or content of any advertising or articles published in 'this' magazine, neither do they reflect the opinion of members of the Committee.

© Articles published in Focus may not be reproduced without permission.

Kindly Note

Focus would like to remind contributors that the deadline for articles is the 10th of the preceding month

If the event you wish to advertise falls in the first week of the month, it is advisable to get the details into Focus a month earlier. The magazines are not delivered from the printers until the first of the month, therefore it takes a few days for them all to be circulated throughout the village.

✍️Editor

Focus is online at www.thefocusmagazine.co.uk

Village Diary April 2020



Weekly

- Mon-Fri (term time) Eaton Bray Pre-school, Eaton Bray Lower School, 01525 220468
- Mon-Fri (term time) Dagnall Under 5's, Dagnall Village Hall, 9.15am - 12.15pm, Mrs Ann Tobin 07816 358342
- Mon-Fri (term time) Edlesborough Pre-School, Edlesborough School, 01525 220431
manager@edlesborough.bucks.sch.uk
- Mon-Thu (term time) Totternhoe Pre-school, mornings, Totternhoe Lower School, Michelle Urbanowicz on 01582 668841
- Mondays Pilates, 10.45am, Totternhoe Memorial Hall, Lisa: 07832 230774
- Mondays Dagnall Community Choir, All Saints Church 7.45 – 9.45pm
- Mondays (term time) Movement and exercise classes with a dance flavour, Northall Village hall 2-3.30. Contact Jan 01442 864271.
- Mondays Curtain Call Youth Theatre 5-7.30pm, Eaton Bray Village Hall, Gavyn 01525 220525
- Mondays Curtain Call Theatre Group - 7:30-10:30pm Eaton Bray Village Hall, Sheila - sdtwinkletoes@yahoo.co.uk
- Mondays KFPA ISTD Classical Ballet classes, 3+yrs, 4.15pm, Edlesborough Memorial Hall, www.kfpa.co.uk
- Mondays Cubs (8-10 ½ years old), 6.30pm - 8pm, 1st Eaton Bray & Edlesborough Scout Hut, High Street, Edlesborough. Contact Liz Coates 01442 842550
- Mondays Yoga, 6:45pm, Edlesborough Memorial Hall, contact 07837 727302
- Mondays Barre, 8pm, Edlesborough Memorial Hall, contact 07837 727302
- Tuesdays Pilates, 10-11am, Eaton Bray Village Hall, Nicky Roussou 07861 162680
- Tuesdays Totternhoe Baby & Toddler Group, 9.30-11.30am, St. Giles Church Hall, Ruth Allen, 01525 222468 or 07796 265174 or email ruthallen002@gmail.com
- Tuesdays Tap & Ballet Classes, JoAnn Latus School of Dance, 4-8pm, Eaton Bray Village Hall, 07800 518654
- Tuesdays Beginner's Boxercise, 6-7pm Dagnall Village Hall, Josh Thompson 07456 574405 or jtpinfo@gmail.com
- Tuesdays Coffee Morning, Bring & Buy, Table Top Sale, 10-12noon, Salvation Army Hall, Booth Place, Eaton Bray
- Fortnightly Pilates, 8pm, Northall Village Hall, Lisa: 07832 230774
- Wednesdays Northall & District Age Concern Wednesday Club, 10am - 3pm, Northall Village Hall, Contact Barbara on 07854 230243
- Wednesdays (term time) Caterpillars Baby and Toddler Group 10am to 11:30am, Grace Baptist Church, Moor End, Edlesborough, £1 per family unit, Contact Alister 07572 395687
- Wednesdays Pilates 6.45 & 7.45pm, Dagnall Village Hall, Andrea on 07855 138005 or andrea@naturalpilates.co.uk
- Wednesdays Art of Ju Jitsu martial arts class, Eaton Bray Village Hall, 7 -7.45pm ages 6-15yrs
- Wed (term time) Art Courses, Whipsnade Village Hall, 9.30am – 12.30pm. Lorna Moore 07896 619660
- Thursdays Yoga, Northall Village Hall, 11.30am-1pm 01525 377542
- Thursdays Jazzercise, 9.30-10.30am, Eaton Bray Village Hall, Angela Veryard, 01525 715208
- Thursdays KFPA Street dance classes 4+yrs 4pm, Edlesborough Memorial Hall, www.kfpa.co.uk
- Thursdays Tae Kwon-do, Dagnall Village Hall, 5.45-7.30pm 07813 755785
- Thursdays Clubbercise 7.30 - 8.30pm. Eaton Bray Hall - Gina Flitton 07846421756
- Thursdays Beavers (6 to 8 years old), 6.15-7.30pm, 1st Eaton Bray & Edlesborough Scout Hut, High Street, Edlesborough. Contact: ebebeaverleader@ebescouts.co.uk
- Thursdays Explorers Scouts (14-18 years old), 8pm-9.30pm, 1st Eaton Bray & Edlesborough Scout Hut, High Street, Edlesborough. Contact Simon Betts, lionheartesu@hotmail.co.uk
- Thursdays Intermediate Boxercise, 7.30-8.30pm, Dagnall Village Hall, Josh Thompson 07456 574405 or jtpinfo@gmail.com
- Thursdays Eaton Bray Methodist Church Social Afternoons, 2 - 4pm, All Welcome

Village Diary April 2020

Thursdays	Retro Line Dance Class. 11.15am to 12.45pm. Eaton Bray Village Hall. Beginners welcome. www.jukeboxjunction.co.uk info@jukeboxjunction.co.uk 07864212171
Thursdays	Mixed Ability Yoga Class, 11.30am to 1.p.m. Northall Village Hall, Contact Dee Lock on 01525 377542
Fridays	Keep Fit class, Edlesborough Memorial Hall 10 - 11am
Fridays	Tap & Ballet Classes, JoAnn Latus School of Dance, 4-8pm, Eaton Bray Village Hall, 07800 518654
Fridays	Stay & Play toddler group, 'Musical Monkeys' at the Eaton Bray Village Hall, 10-11.30am, £4.50 for one adult and child, £1 for extra children/adults, 0-6 months free
Fridays	Scouts, 10 ½ to 14 years old), 7.00-8.30pm, 1st Eaton Bray & Edlesborough Scout Hut, High Street, Edlesborough. Contact Mark Owen, 07899 892344, ebescoutleader@ebescouts.co.uk
Fridays (term time)	"Little Luvvies" baby ballet classes 10am-11.30am. Contact Emma Whittemore on 01525 376124
Fri (term time)	Art Courses, Whipsnade Village Hall, 9.30am – 12.30pm. Lorna Moore 078 9661 9660
Saturdays	Jazzercise, 9.30-10.30am, Eaton Bray Village Hall, Angela Veryard, 01525 715208
Saturdays	KFPA Musical Theatre classes 4+yrs www.kfpa.co.uk , 10am, Edlesborough Memorial Hall
Saturdays	Bootcamp Fitness, 9-10am, Dagnall Recreation Ground, Josh Thompson 07456 574405 or jtptinfo@gmail.com
Sundays	Sunday Worship at 11am and 6pm Edlesborough Baptist Church, Moor End, LU6 2FL Contact Alister on 07572 395687
Sundays	Karate for kids & adults, 4-5:30pm, Eaton Bray Village Hall, Contact 07500 007779
Monthly	
1st Monday	Eaton Bray Parish Council Meeting, 7.30pm, The Coffee Tavern (except Jan-2nd Monday)
1st Monday	Eaton Bray W.I. Meeting, 7.30pm. Eaton Bray Methodist Church Hall. Contact Margaret Jones on 01525 220991
1st & 3rd Mon (ex. Bank Hols)	Knit 'n Stitch at Edlesborough Village Hall, 1:45pm to 3:45pm. Contact Heather Westwood (01525 839083)
2nd Mon	Film Society, Sep to May, 2pm, Eaton Bray Village Hall, Graham Chappell 01525 220883
1st & 3rd Tues	Dunstable & District Orbit (social and charitable) Club meet at Dunstable Rugby Club at 8pm. For details contact 01525 222441 or 01582 755147
1st Saturday	St. Mary's Church, Eaton Bray Coffee Morning & Plant Sale, 10:30am - 12 noon
1st Sunday	St. Mary's Edlesborough Open Days, 2-5pm, May to September inclusive
2nd Monday	SilverLink, 2.30-4.00pm, Grace Baptist Chapel Edlesborough – activities, talks, friendship & refreshments for the over 60s
2nd Tuesday	Dunstable & District Local History Society meeting, 7.45pm, Methodist Church Hall, Dunstable (opposite Wilkinson)
2nd Tuesday	Edlesborough W.I. Meeting, 7.30 pm, Edlesborough Memorial Hall. Contact Sue Bingham on 01525 222522
2nd & 4th Tues	Dagnall Church Welcome Club, 2-4pm, Dagnall Church. Contact Catherine Hayden 01525 220527
2nd Wednesday	St.Mary's Ladies Guild, 2pm, St.Mary's, Eaton Bray
2nd Wednesday	Eaton Bray & Edlesborough Lions Club, 7.30pm, The Coffee Tavern
2nd Thursday	CAMEO Coffee, tea & chat, 10am-12noon, Edlesborough Methodist Church
2nd Saturday	Workshops Dynamic Yoga 9.30-11am £10 Eaton Bray Coffee Tavern, Keira 07936 693696
3rd Thursday	Edlesborough Parish Council Meeting, 7.30pm, Memorial Hall
3rd Sunday	Lunch club 11.30 to 2.00pm, Eaton Bray Village Hall, Chris Hewitt 222288
Last Saturday	Coffee Morning, 10:00-12 noon, Edlesborough Methodist Church

Village Diary April 2020

Other Regular Events

- 5th Beds Area Narrow Gauge Model Railway Club Meeting, 10.30am-3.30pm, Eaton Bray Village Hall
- 17th Leukaemia Research Coffee Morning, 2 Dunstable Road, Dagnall 10.30am. All welcome.
- 21st Dagnall and Kensworth Friendship Club outing to Bicester Garden Centre for lunch and shopping leaving Dagnall at 11.40am

One Off/Annual/Irregular Events

- 1st Curry Night for Macmillan Cancer Support, Cafe Masala, £20 per head 01525 222264
- 4th Great British Spring Clean in Northall & Edlesborough, meet Edlesborough Green at 10am
- 6-17th Eaton Bray Lawn Tennis Club Easter Tennis Camps, Sara 07561 571578
- 18th Eaton Bray Village Litterpick, meet at School Lane car park at 10am
- 19th Carnival Queen and Princess draw, 11:15am, Eaton Bray Village Hall, entries deadline 16th April
- 25th Great British Spring Clean in Northall & Edlesborough, meet Edlesborough Green at 10am

LEN BUCKINGHAM

Eve and her family would like to give our sincere thanks to everybody who has sent their condolences to us, together with cards, flowers and generous donations to charity. Len lived in Edlesborough for 50 years and made many friends whilst he was here who have remembered him and supported us at this time which has been a great help.

RON ROBERTS

Margaret, Adrian, Alison, and family would like to thank all those who attended Ron's funeral, and also all who donated in memory of Ron. A total of £296.00 was raised for Cancer Research UK.

Friend of Bucks



The Wednesday Club



The Wednesday Club, who meet every Wednesday in Northall Village Hall, are seeking additional volunteer drivers of their 12-seat Minibus. We pick up members from their homes in the surrounding villages between 9:15am and 10am, and then take them home again at 3pm. If you are interested, please contact Peter Williams, Chairman of the Trustees, on 01442 842 506.

Village Info



EDaN Community Transport
Peter Williams: 01442 842506

Village Hall Booking Contacts

Northall: Lorna Cabbage Tel: 07857 318696 www.edlesborough-pc.gov.uk/nvh

Email: northallvhbookings@gmail.com

Eaton Bray: Norman Lee Tel: 07975 797202

Email: bookings@ebvh.co.uk Website www.ebvh.co.uk

Dagnall: Liz Coates 01442 842550 & Trish Owen 07762 151364

Email DVH_Bookings@outlook.com

Edlesborough Memorial Hall: Penny Pataky, Tel: 01525 229358

Email: manager@edlesborough-pc.gov.uk

Police Contact Numbers...

making neighbourhoods safer together

General Assistance (Recommended Number): 101 Emergency: 999

Bedfordshire Police (Eaton Bray)

Leighton Buzzard Police Station/Kathryn Horgan: 01582 473411

Typetalk: 18001 01582 473418

Email: LPT.LeightonBuzzardLinslade&Rural@bedfordshire.pnn.police.uk

Thames Valley Police (Edlesborough, Dagnall & Northall)

PCSO Jackie Dodson

Email: NHPT@thamesvalley.pnn.police.uk

Defibrillator Locations

These units are registered with the Ambulance Services. To access them, please phone 999. You will be given the access code and the location of the unit will be confirmed. The defibrillator is easy and safe to use. The units can be found on the outside walls of the following locations:



Dagnall: Red Lion Public House

Eaton Bray: The Coffee Tavern

Northall: The Swan Public House

Edlesborough: Edlesborough Memorial Hall & Baptist Church, Summerleys



Helpline: 07930987064

Manned phone hours:

9am to 5pm, Monday to Friday

(An answering service is available for out-of-hours calls)

Call us if you want help with getting to the surgery/hospital, collecting prescriptions, minor errands or d-i-y jobs, form-filling, walking your pet, on-line shopping support etc. or if you would welcome our befriending service.

We help people of Eaton Bray and adjacent villages

Services at St Mary's Church

SUNDAYS : 8.00am HOLY COMMUNION
10.00am PARISH SUNG HOLY COMMUNION

On Third Sunday of each month:

10.00am – WORSHIP FOR EVERYONE a shorter, less formal service for families. (For anyone wishing to attend a service where Holy Communion is offered, there is a Family Communion at 10.30am at All Saints' Church, Dagnall, where visitors are assured of a warm welcome).

WEEK-DAYS:

Wednesday: 10.00am Holy Communion
EVERYONE WELCOME AT THESE SERVICES

In light of the current Coronavirus situation the Pastoral Care Team at St. Mary's, Eaton Bray welcomes your assistance in identifying any of our parishioners who might be sick or otherwise benefit from their support during this challenging time. Please contact Gaye Soule on 07807924218 (m) or send an email to admin@stmaryseatonbray.org.uk in this regard.



Open Gardens 2020

Since 2006, one of the social highlights of the year in our villages has been our Open Gardens event. We have had some wonderful afternoons enjoying gardens that have been opened by willing gardeners; both gardeners and visitors enjoy the experience in equal measure.

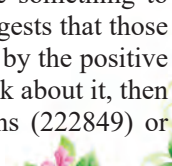
This year's event will on 23rd August so people who have previously opened their gardens in mid-June or July may wish to show off an entirely fresh colour scheme and others who have not opened their gardens before may feel their garden is more beautiful in August when we can expect a feast of dahlias, heleniums, rudbeckia, etc.. This is a really special event in our villages' calendar. We already have a few offers of gardens but we do need some more.

**Please would you
open your garden?**

Contact

**Kay - 222849 or
Gordon - 220136**

Now is the time to offer to open your garden. It can be large or small – all gardens have something to offer visitors and past experience suggests that those who open their gardens are delighted by the positive feedback they receive. Do please think about it, then get in touch with either Kay Griffiths (222849) or Gordon Gray (220136).



Eaton Bray with Edlesborough Parish News

Vicar: Rev'd Joy Cousins

The Vicarage, 11 High Street, Eaton Bray - Tel: 01525 220261

Curate: Rev'd Stephen Burge

Church Warden & Pastoral Matters: Catherine Hayden (01525 220527)

Reader: Gordon Gray (01525 220136)

Website: www.stmaryseatonbray.org.uk Facebook: St Mary's Eaton Bray

For many people the beauty of the world leads them to think about the creator. The vibrant colour of a sunset, the glorious views from a mountain peak, or the crisp crunch of leaves underfoot in autumn are all moments of wonder. I love walking beside the sea and gazing out into the vastness of the ocean. If you visit the same beach regularly, you notice that it is constantly changing. And the sea itself changes too- from gentle waves lapping the shore to huge powerful waves whipped up by an angry wind.

As you look out over the ocean, all you can see is where the water meets the horizon. It is a reminder of how small we are as human beings in comparison with the world, the universe and God. In Psalm 8, the Psalmist wondered: 'What are human beings, that you think of them; mere mortals that you care for them?'

This is a theme which recurs throughout the Bible and is particularly evident in the Psalms. The Psalms were used as songs of thanks and praise in worship. Christians today still use the Psalms in addition to hymns and songs written through the centuries right up to the present day. Hymn writers are inspired by many things: by the Bible, by creation and by the life, death and resurrection of Jesus. During Holy Week and Easter we recall God's great love in sending his son, Jesus, to show us the way to the Father. On Good Friday, churches throughout the world remember that Jesus loved each of us so much that he was prepared to die on the cross. Through Jesus' death and resurrection, each one of us can have a personal relationship with God, the one who created the vast oceans, planet earth, and the entire universe.



William Reese used the image of the ocean as a picture of God's love in his wonderful hymn, 'Here is love vast as the ocean'. Through Jesus' life, death and resurrection, we have the fullest possible picture of God's love and care for us. Reese describes God's mercy flowing out to us like a 'vast and glorious tide'.

The good news of Easter is that we are loved by God, accepted by God and forgiven by God. It is an invitation for us to respond to that immense love and to share in the joy which comes from following Jesus. I believe it also reassures us that whatever may happen God continues to love us and we can trust him with all our doubts and fears.

'Grace and love, like mighty rivers
poured incessant from above;
and heaven's peace and perfect justice
kissed a guilty world in love.' (William Reese)

Wishing you all a happy and holy Eastertide,
☪ Joy Vicar of Eaton Bray with Edlesborough





“Great British Spring Clean” in Northall and Edlesborough

Spring is here and several litter picks have already taken place in the Villages resulting in a haul of ten or so bags of assorted litter. Many thanks to those stalwarts who have helped so far, and to those who have been out clearing in their own time and disposed of their haul at home. And still it comes.... At the end of March and the beginning of April, the national “Great British Spring Clean” will take place all over the country. The Keep Britain Tidy brigade will be out in force hoping to make inroads on the piles of rubbish swamping our roads and lanes. If we are lucky, the rain will stop, and the sun will shine on the efforts being made. As I write this (March 9th) we are in the throes of the Covid19 scare, and I have been waiting to see what is happening before making arrangements to join in this year. However, I have decided to go ahead and organise a couple of dates in April - **Saturday 4th April and Saturday 25th April** -when hopefully we will know where we are. With a bit of luck, the health and weather gremlins will be out of action and we can spend some time out in the fresh air. These are the two weekend dates, but we shall probably organise one or two weekday litter picks as well. I will email these around the Group and put all the dates on the Village Facebook as well, so keep an eye open. I suggest that if you are interested in joining us on either of these dates, could you drop me a quick email (lornacubbage@btinternet.com) and I will add you to my email Litter Picking group, so that I can keep you informed of any changes or cancellations. This doesn't commit you to turning up, but it would prevent you from turning up after I have had to cancel due to bad weather, for example, which would be annoying.

We'll meet at the Village Sign on the Green at 10.30am on both dates.

Don't forget your hi-vis jackets, stout footwear or boots and, most importantly, rubber gloves. There are still places in the Villages which require attention, as well as the more outlying area of Cock's Close and the main road down to the Traveller's Rest – and anywhere else that you know needs clearing up!! I imagine that we'll finish just after midday but we can keep going if you are having a good time.... I look forward to seeing you on one of the Picks. Let's get together and REALLY annoy those people who can't bear to see a tidy verge!!....

✍️ Lorna Cubbage

**Great British Spring
Clean in Northall &
Edlesborough**

Saturday 4th April

Saturday 25th April

**Meet at the Village Sign on
the Green at 10:30am**

**Wear hi-vis jackets, stout
footwear and rubber gloves**





UNICORN WINDOWS LTD

UNIT 3 YOUNGS INDUSTRIAL ESTATE
STANBRIDGE ROAD, LEIGHTON BUZZARD
BEDS LU7 4QB



YOUR LOCAL HOME IMPROVERS

- ✓ DOORS; COMPOSITE, ALI AND UPVC
- ✓ CONSERVATORIES
- ✓ ORANGARIES AND GLAZED EXTENSIONS
- ✓ CAT FLAPS/DOG FLAPS
- ✓ BI-FOLD DOORS
- ✓ PORCHES
- ✓ CLADDING
- ✓ REPAIRS - INCLUDING REPLACEMENT GLASS

- ✓ WINDOWS; UPVC AND ALUMINIUM
- ✓ SOLID ROOF/ROOF CONVERSIONS
- ✓ CONSERVATORY REFURBISHMENTS
- ✓ SOFFITS, FASCIAS AND GUTTERING
- ✓ LANTERN ROOFS AND SKYPODS
- ✓ FLUSH SASH WINDOWS
- ✓ SLIDING DOORS
- ✓ AND MORE..





CONTACT US

FOR MORE INFO OR TO ARRANGE YOUR FREE, NO OBLIGATION QUOTE

01525 854272

sales@unicornwindows.co.uk






Carpet & Upholstery Cleaning

Professional & Local
All work guaranteed

Powerful equipment extracts more water
making it quicker to dry naturally

100% Guaranteed no chemicals left in carpet
when dry therefore will not easily resoil
& perfectly safe for children & pets

Recommendations account for 90% of my work

Absolutely no hard sell

Telephone Darren for a Free Quote

DEEP-CLEAN

01525 851 811 & 07790 034818

www.deep-cleaners.co.uk

Email: sales@deep-cleaners.co.uk

Problem Solving:

Virus & Spyware Removal
Internet & Email Assistance
Fault Diagnostics
Repairs & Upgrades
Slow Running PC's

Services:

PC & Mac Support
Wired & Wireless Networks
Data Recovery
Install & Set-up
Health Checks

On-site Visits:

Office Hours &
Evenings - by appointment

Sales:

Desktops, Laptops & Tablets
Printers & Peripherals
Software

For friendly advice call John Wallace

07968 536068 or 01525 261381

Email: john@computation.co.uk

Web: www.computation.co.uk

9a Lower Way, Great Brickhill, Buckinghamshire. MK17 9AG

**Computation
Services Ltd
Established. 1999**

*"Excellent
experience.
I nearly fell
asleep whilst
having my
fillings done!
Very reassuring
- no rush.
I was made to
feel completely
at ease.
Thank you!"
- R.R*



Edlesborough Dental Practice



floss and smile
gentle dentistry



*"Without doubt
the most
competent,
gentle & lovely
dentist in the
Northern
hemisphere!
I won't see
anyone else.
Thank you
from a nervous
patient."
- M.B.*

Edlesborough Dental Practice

Telephone: 01525 223175

11 Cow lane, Edlesborough, LU62HT

www.flossandsmile.co.uk

Get the Beautiful Smile You Deserve!

EMERGENCY TEXT TO : 07590035899



The Clear Alternative
to Braces



Implants

General Family Dentistry *Crowns *Bridges *Dentures *Smile Makeovers

***Tooth Whitening *Tooth straightening *Implants *Botox**

***Hygienist *Sedation *0% Finance**



Dentist :
Dr A. Johar
GDC number : 111350

Hygienist:
Mrs Jane Showder
GDC number : 2344



For all your painting & decorating requirements
 Domestic and Commercial
 call Max for a free estimate with no obligation
maxbro@btinternet.com

Coffee Tavern



Large Hall	£6.00 per hour
Commitee Room	£3.50 per hour
Large Hall & Commitee Room	£8.00 per hour

Bookings 01525 220891

Stairlift, access ramp and free WiFi available



Moren Associates
 Technology Services

Technology Support for Home and Business

PCs, Smartphones, Tablets, Printers
 Broadband, Internet, WiFi, Email
 Security Guidance



Virus Protection & Removal
 Upgrades & Installations
 Data and System Recovery



Hardware & Software Troubleshooting
 Home & Office Network Setup & Support

01525 229695 (Edlesborough)
support@morenassociates.co.uk



EcoTech Oven & Carpet Cleaning



- Non franchise family run business
- Eco-friendly Oven & Carpet cleaning
- Fully trained & insured technicians



OVEN CLEANING FROM £45
CARPET & UPHOLSTERY FROM £60

Call for a free quotation

 **01525 221922**

www.ecotechovenandcarpetcleaning.co.uk

Find us on



Checkatrade.com
Where reputation matters



Dominic Woolcott Painter & Decorator



- Internal & External
- Plastering & Coving
- Insurance Work
- 20 Years Experience
- Competitive Rates

**For a professional job call:
01525 229682 or 07747 042879**

P. DYER ELECTRICAL

For all your Electrical & Testing & Inspection needs

- Re-wires
- Testing & Inspection
- Security Systems/Lighting
- LED & Low Energy Lighting
- CCTV Systems
- PAT Testing
- Fuse Boards
- Fault Finding/Repairs

Fully insured, Part P registered, all work guaranteed.
Fast, friendly, reliable, local electrician. For a free,
no-obligation estimate, call Paul on:



Tel: 01525 222109
Mobile: 07850 682815



Lee Hutt 25 YEARS
Heating & Plumbing Services

Bathrooms
DESIGN & INSTALLATION

TILING

HEATING

TAPS

Leaks

CALL OUTS

Free Estimates

01525 222145 07971 559185

Barry Cato Motor Repairs

Est. 1981

Servicing, repairs and MOT's arranged

Workshop at:

r/o Norfolk House Farm, Harling Road
Eaton Bray, Dunstable, Beds, LU6 1QY

Tel: 01525 221681 (workshop)
07836 650015 (mobile)

David John Harris



(Established 1992)

All Fencing Work • All Gates • Paving • Patios
Driveways • Shingle • Hedge Setting and Cutting
Grass Cutting • Turfing Specialist • Exterior
Painting Service • Sheds Small Building Work
Trees & Shrubs Supplied

Tel/Fax: 01525 221745
Mobile: 07889 143713



Steve the Mower Man

Steve Johns
 All mowers and garden machinery
 repaired and serviced
 Collection and delivery available
07720 828166

Will Kimberley
Garden Services
01442 255784

Phone for a free no obligation written estimate
wkgardenservices@btconnect.com

- High hedges a speciality
- Fences erected and repaired
- General garden tidy up's
- In fact any job in the garden!

GRASS ROOTS
GARDEN MAINTENANCE



TREE SURGERY, HEDGE PRUNING,
 SELECTION SUPPLY AND PLANTING OF
 TREES, SHRUBS AND HEDGES.
 REGULAR MAINTENANCE/ONE-OFF JOBS
 (Fully Insured)
Brian McMahon NCH (Arb)
01525 221960

S M Reilly & Son Ltd
General Builders & Contractors



**Turning Your House into
 a Home Since 1987**

All aspects of the building trade undertaken

- *Extensions*Hard Landscaping*
- *Windows, Doors & Conservatories*
- *Fitting of Aluminium Bi-fold Doors*
- *Kitchen & Bathrooms*Drives*
- *Loft Conversions*

01525 221740 07970 637511



Flicks & Bangs
 HAIR SALON

A warm, friendly salon offering a wide range of bespoke hair services for all the family. Feel free to pop in for a complimentary consultation.

www.flicksandbangs.com

Flicks & Bangs
 66 High Street
 Eaton Bray
 Nr. Dunstable
 Beds LU6 2DP
01525 221252

Opening Hours

Mon	Closed
Tue	9 am - 5 pm
Wed	9 am - 5 pm
Thu	9 am - 8 pm
Fri	9 am - 6 pm
Sat	8 am - 4 pm
Sun	Closed



01525
851080

.CO.UK

07973
167779

SIGNS

VEHICLE SIGNS

BOARDS & BANNERS

STICKERS

BUSINESS CARDS

PRINTED & EMBROIDERED

CLOTHING So Much More...

12 HARMILL IND EST LEIGHTON BUZZARD LU74FF

www.pinstripes1995.co.uk

Join us on Facebook – PINSTripES 1995

WASHING MACHINE REPAIRS

ALSO
DISHWASHERS, TUMBLE DRIERS,
AND ELECTRIC COOKERS



Call

ANDERSON D.R.S.

01582 665764

www.andersondrs.co.uk

SALES AND RENTALS AVAILABLE

Established over 20 Years

DUNCAN TOMBLIN

TREE SURGEON

Forestry Contractor • Tree Felling

Crown Reduction & Thinnings

Deadwooding • Hedge Cutting

Stump Grinding • Site Clearance

Private Agriculture Fencing Contractor

Chipper & Stump Grinding Hire

Digger Hire

FULL PUBLIC LIABILITY INSURANCE

FREE ESTIMATES

'The Best Choice For Your Tree'

TEL: (01525) 221946

MOBILE: (07802) 410728

12 Greenways, Eaton Bray, Beds



Patricia's Cuisine

Catering For All Occasions

- Buffets, Dinners •
- Christenings, Weddings, Funerals •
- Promotions & Business Lunches •

For Enquiries & Menu

Meadside Farm, 104 High Street,
Eaton Bray, Bedfordshire, LU6 2DP

Telephone: 01525 222174

www.patriciascuisine.co.uk

alto window cleaning

For a professional service.....

- Window cleaning
- Conservatory cleaning
- Fascia & gutter cleaning

07876 594186

“A wonderful
place to be!”



Eaton Bray Academy

Eaton Bray Academy is a friendly village primary school which caters for children aged 4 - 11 years of all abilities. Our Nursery provides education for children from the term after they are two.

Ofsted

Good
Provider



© Photography by Carrie



Tel: 01525 220468

Email: admin@eba.ec

www.eatonbrayacademy.co.uk

Smart[®] AUTOMOTIVE



EXPERTISE, QUALITY & EXPERIENCE
EST 2003

Car Bodyshop, Service Workshop & MOT Bay



MOT TESTING
FOR ALL MAKES & MODELS

4 WHEEL ALIGNMENT
& TYRE FITTING

SPECIALISTS IN COMPLETE
CLASSIC CAR RESTORATION

DEALER TRAINED TECHNICIANS

EXTENSIVE EXPERIENCE IN
PRESTIGE CAR PAINTWORK & REPAIR

ACCIDENT & VANDALISM DAMAGE

INSURANCE WORK UNDERTAKEN

MOBILE BODY REPAIRS
ALLOY WHEELS - DENTS - BUMPERS
CHIPS - SCRATCHES - SCUFFS

Fully equipped vans that come
to your home or office

FREE COLLECTION & DELIVERY
LOAN CARS AVAILABLE



01582 664772 www.smartautomotive.co

Smart Automotive, Units 17 & 18 Icknield Way Farm, Tring Road, Eaton Bray LU6 2JX

SMART AUTOMOTIVE IS THE TRADING NAME OF SMART TOUCH (MK) LIMITED

Well, you'd expect a few numbers at a music festival, wouldn't you? (Sorry, I couldn't resist that one). But, if you've not been to EdleFest before, I thought you might be surprised by some of the numbers behind our own 'little' festival. So here they are:

- 1 stage (carried up the hill by hand – more volunteers always welcome!)
- 2 lighting rigs
- 3 portaloos (delivered by truck – thankfully)
- 6 great bands booked for 2020
- 20 artists on stage
- 74 bottles of wine consumed last year (thirsty crowd?)
- 220 tickets available (each night)
- 468 pints of real-ale drunk last year (now, there's a challenge...)
- 699 new website visitors so far (from 27 countries)
- 1800 Watts of sound to liven up our beautiful medieval church
- 2000 flyers distributed (so don't say you've not heard about it!)

I know they're just numbers. But I also know they all add up to 1 fantastic music festival, right on your doorstep! We have music lined-up for the evenings of June 12th and 13th, and both nights are selling well, so don't miss out!

Tickets are available in the village from Janes Flooring (cash or cheque only, please). Or you can get them on-line now via the website, or by calling 01525 221744. We've held the same low prices as last year and there's a discounted rate if you come for both nights – and when you look at the line-up, why wouldn't you?

Find out more online by searching for EdleFest, or visiting edlefest.site123.me, by calling 01525 221744, or by email to EdleFest@gmail.com. See you there!

Richard Brandon



Standing room only – EdleFest 2019



JigJam – booked for EdleFest 2020

Dagnall Village Hall Committee

Annual General Meeting 2020



The Annual General Meeting of the Dagnall Village Hall Management Committee will take place on **Tuesday 2nd June at 7.00pm** in the rear room at the Village Hall.

All residents of Dagnall aged 18 and over are welcome to attend and eligible to vote. The following officers of the committee will be elected:

Chairperson

Secretary – post currently vacant

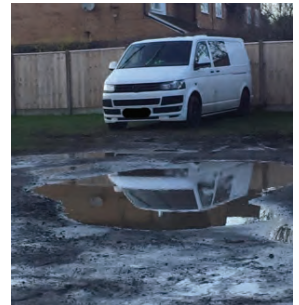
Treasurer

Bookings Officer – post currently vacant

Anyone wishing to stand for election to one of the offices may obtain a nomination form from the Secretary (telephone 843608). You may also stand as a committee member just as a villager willing to help run a very important part of the village.

Please do make the effort to attend the AGM – it's your village hall (and recreation ground) and you have an opportunity to have a say in how it is managed.

DAGNALL VILLAGE HALL NEWS - MARCH 2020



It's all about potholes!

We are now fundraising to resurface the DVH carpark and create a disabled access ramp to the newly replaced back door of the rear hall. DVH is widely used by all sorts of groups but the car park surface has seen much better days and is in dire need of an overhaul.

The good news is we have secured £10,000 from the Big Lottery to put towards the project but we need approximately £10k more to reach target. Anything you might care to donate will be greatly appreciated, or if you fancy putting on a fundraiser the committee will be happy to help you. You can donate via cash / cheque or PayPal – dagnall_village_hall@outlook.com (friends and family option) or please get in contact for more info including BACs details. Cash and cheques (payable to 'Dagnall Village Hall Project Funds') are very welcome too!

Thanks, Trish Owen – dagnall_village_hall@outlook.com 07762 151364



Edlesborough Parish Council News

Including Edlesborough, Dagnall and Northall

Ivinghoe Area Freight Zone Proposal

At the February meeting Cllr Wilkinson, who had attended a meeting outlining the Ivinghoe Area Freight Zone Proposals, reported to the Council that whilst the strategy is not ideal for the B440 through Edlesborough and Northall it does appear to be the best proposal available. The Council agreed that they whilst they acknowledge that there will be a significant increase in HGV's on the B440, the Council will support the Bucks CC Freight Strategy provided that the new Buckinghamshire Council put in measures to ensure that:

- The road surface on the B440 through Edlesborough and Northall is brought up to a standard that can withstand the increased HGV traffic.
- The pinch point on Edlesborough Hill is addressed. The narrowness of the road and the visibility mean that two HGV cannot pass each other at this location.

A copy of the Council's full response to the proposal can be found on the Council Website. The Council encourages all parishioners to engage in any future consultations regarding the Ivinghoe Area Freight Zone.

District Cllr Chris Poll

Cllr Poll attended the February EPC meeting and gave the following report:

"We held our last substantive full Council meeting on the 5th February in which the only matter discussed was staff pay settlements. Most other topics are now left to the new Buckinghamshire authority which after our final shadow authority meeting will convene in early May.



We have made some progress within the planning department whose performance has been unsatisfactory of late with complaints down significantly. It does not compare well with the other districts so resources will be targeted there.

Our in-house refuse system is



a model that it is hoped will be replicated once contracts within the new council are up for renewal.

Unfortunately, the VALP will not be concluded before AVDC ceases to exist. This is due to a very high volume of handwritten responses to the amendments consultation. It is expected that VALP will pass soon after the new Buckinghamshire Council is formed."

With the commencement of the new Buckinghamshire Council Cllr Chris Poll, who has been a District Cllr since May 2011, has decided not to stand for election to the new council. Throughout his term in office Cllr Poll has actively supported Edlesborough Parish Council with advice and support in Parish matters. Edlesborough Parish Council wishes to express their sincere gratitude for this and wish him every success in his future endeavours.

County Cllr Anne Wight

Cllr Wight attended the February EPC meeting and reported on the following matters, her full report can be found on the EPC website:

- Ivinghoe area freight zone proposal
- Reporting Unauthorised Encampments
- Fairer funding plea to look after Buckinghamshire's roads
- Slicketts Lane flooding & potholes

Council Elections

Elections to Edlesborough Parish Council are due to take place on the 7th May. If you are interested in becoming a parish councillor, please contact the clerk for further information.

Traffic Management & Speedwatch

The EDaN Traffic Management team played a significant role in getting the A4146, through the parish, changed to the B440. This gives us the potential for more influence to put in measures for traffic calming etc. So far, the pressure for a 7.5T weight limit has been ignored by BCC (see the item on Freight Strategy above).

We are looking for new members



to keep the pressure on the new authority and for volunteers to help with the new Speedwatch Sentinel device. If you have an interest in traffic management in the villages or are concerned about Road Safety, please contact Cllr Alan Williams at Alan.williams@edlesborough-pc.gov.uk or 07828 398371

The Anne Thompson Young Peoples Cup for Excellence



The Anne Thompson Young People's Cup for Excellence is an award that is presented by EPC to a young person in the Parish who has come to the attention of the Council. The cup may be awarded for excellent achievement, raising awareness of an issue, contributing to the

local community or for another reason that makes the young person stand out to the Council.

Nominations for the 2020 recipient should be submitted to the Parish Clerk by 30th May 2020.

Please ensure you include the nominee's full name, age, address and a detailed explanation as to why this young person should be considered for the award.

EdleFest 2019

The EdleFest dates for 2019 have been confirmed as 12th and 13th June. More



information and tickets are available via the EdleFest website <https://edlefest.site123.me/>

The Great British Spring Clean

This will take place between 20th March and 13th April this year. Any parishioner interested in taking part in litter picking etc. should contact Mrs Lorna Cabbage on 01525 220361 or lornacabbage@btinternet.com

The New Pavilion

The project is currently experiencing a 4-5 week delay due to the poor weather conditions

Unfortunately, the Council's Lottery Funding application which would have been used to fund the

final stages of the project has been refused. EPC's Pavilion Working Party and ECSC continue to work hard exploring other funding options.

It is not too late for Parishioners to 'Buy a Brick' or sponsor the fitting out of the New Pavilion, anyone wanting more information on this should contact Ken Holloway on ken.holloway@keffi.net

For the latest information and any updates please look on the Parish Council website.

Allotments

Are you a keen gardener? We currently have allotment plots available in the Parish. Anyone wishing to take on an allotment should contact the Clerk. Fees are £2 per pole and plots range in size from 5 – 10 poles.

Streetlights

Please report failed streetlights in Edlesborough, Dagnall and Northall to the Clerk for repair.

When making a report please ensure you provide the Clerk with the information displayed on the lamp post.

EPC Meetings

The next Edlesborough Parish Council Meetings will take place as follows:

- Edlesborough Memorial Hall, Thursday 16th April 2019. This will be preceded by the Annual Parish Meeting which commences at 7.30pm. This meeting is a review to parishioners of the Council's activities and achievements over the previous 12 months.
- Edlesborough Memorial Hall, Thursday 21st May 2019. This is the Annual Meeting of the Council. At the beginning of the meeting the Chair and Vice-Chair are elected and committee members and representatives to other bodies are appointed.
- The meetings will commence at 7:30pm.

All Parishioners are welcome to attend all Parish Council meetings and may ask questions, raise issues and give suggestions during the Open Forum before the formal start of the meeting. The full minutes of the Parish Council meetings are available to view on the website or from the Parish Clerk.

Edlesborough Parish Council Contact Information:

Clerk: Miss Penny Pataky *Office hours Mon – Fri 11am – 3pm (Excl. Wed)*

Email: clerk@edlesborough-pc.gov.uk 01525 229358 Website: www.edlesborough-pc.gov.uk

Facebook: www.facebook.com/EDANParishCouncil



Heroes
4th July 2020

**St Mary's Village
Carnival 2020**

*In aid of St Mary's Church Eaton Bray Fabric Fund,
Dunstable Foodbank and other local charities & good causes*

This year the Carnival will be held on Saturday the 4th of July 2020
with the theme of 'HEROES'.

CARNIVAL QUEEN 2020

If you are aged between 7 and 12 years and live in Dagnall, Eaton Bray, Edlesborough or Northall you could be leading the procession in the Carnival Queen carriage. This year's Queen and assistants will be chosen by draw on Sunday the 19th of April 2020 in Eaton Bray village hall.

Visit www.stmarysvillagecarnival.com for further details and an application form.

INFORMATION FOR LOCAL BUSINESSES

The Carnival is the perfect opportunity for businesses and organisations to be part of a local community event which is attracting an ever increasing amount of visitors and gaining a reputation as one of the best rural carnivals around.

In order to make sure you have a presence at the Carnival, the carnival committee are urging local businesses, schools, youth groups and organisations to make contact and be part of this brilliant event. With visitors attending from all over Bedfordshire, Buckinghamshire and beyond the Carnival offers the perfect platform for business' to come and meet their current and potential customers. The committee will work in partnership with a business or organisation to ensure that they get the best out of what the carnival can offer. Just a few ways the carnival can help are:

- Advertising in the carnival programme, delivered to over 2500 homes locally.
- Advertising in the carnival arena, offering prime exposure within the heart of the carnival.
- Having a stall at the carnival. Prices unchanged from last year.
- Donating a prize towards either the grand draw or the silent auction.

To book a stall, arrange advertising, offer prizes or for a chat about how the carnival can work for your business or organisation, visit the carnival website.

WE NEED YOUR HELP

Many members of the Carnival Committee are highly experienced **but** we need new and enthusiastic people to help therefore ensuring that the tradition of Carnival can be continued for many years; so, we need fresh faces to help organise the event.

There are some specific roles where we need help urgently:

- Assist with the Church tombola
- Arrange and running the BBQ on Carnival day

If you know someone who is itching to help then please contact us through the website or Facebook page.

www.stmarysvillagecarnival.com

EATON BRAY PARISH COUNCIL

HIGHLIGHTS OF THE MINUTES

A full/detailed copy of the minutes for Eaton Bray Parish Council can be found on our website.

A hard copy of the minutes can also be viewed on the Parish Council's notice board at The Coffee Tavern.

PARISH COUNCILLOR VACANCY

The Parish Council has a vacancy for a Parish Councillor. If you are interested in this role please contact the Parish Clerk.

Meeting of Eaton Bray Parish Council

Held on Monday 3rd February from 7:30pm at the Coffee Tavern

Central Bedfordshire Council (CBC):

Cllr Philip Spicer, email Philip.Spicer@centralbedfordshire.gov.uk

CBC Website: www.centralbedfordshire.gov.uk

CBC Email: customers@centralbedfordshire.gov.uk

CBC Customer Services: 0300 300 8301

Bedfordshire police:

Eaton Bray Police contact: PCSO Ellie Vaughan-Springate, Bedfordshire Police - Community Policing Team, Leighton Buzzard, Police & Fire Hub, Lake Street, Leighton Buzzard, LU7 1RT

For general Police contact/enquiries: Non-emergency call 101 / All emergencies 999

EB Bloomers: The Parish Council wished to thank the volunteers of the EB Bloomers for the lovely planting displays around the village.

Parish Council Website: Reminder - the Parish Council website is going through updates/ maintenance so it complies with new government guidelines. During the update minutes/ documentation should be accessible, however if you experience difficulties obtaining information during the maintenance period please contact the Parish Clerk for assistance.

Village Market: The Village Market Group are on the lookout for additional volunteers to help get involved with the running of the markets. If you are interested, please contact the Parish Clerk.

Speedwatch If you would like to get involved in trying to slow down traffic in the village/ concerned about road safety, please contact the Parish Clerk.

Parish Council Meeting Dates:

Held in The Coffee Tavern / 1st floor, from 7:30pm (please check website for any changes to date/times)

*Monday 6th April 2020 *Monday 4th May 2020



Heidi Head, Parish Clerk

Email: clerk@ebpc.co.uk – Telephone/Text: 07931 479663 – Website: www.ebpc.co.uk

Office Hours: Tuesday/Thursday/Friday 09:30-13:30hrs

Follow Eaton Bray Parish Council on Facebook and Twitter

Keep up to date with what is going on in your parish



Carnival Queen & Princess

St Mary's Village Carnival

Would you like to lead the Carnival Procession and help open the Carnival on Saturday 6th July?

Are you aged between 7 and 12 years?

If you could be the Carnival Queen or Princess we are looking for.

To take part all you have to do is complete and return an entry form (details below) and come along to Eaton Bray Village Hall on

Sunday 19 April at 11.15am

when a draw to select the Queen, Princess and two Attendants will take place.

How to Enter

Please telephone Cheryl Spratt on 01525 222139 for an entry form, or download a form from the Carnival website:
www.stmarysvillagecarnival.com

Entry forms should be returned to Cheryl by 16th April 2020

EDLESBOROUGH SURGERY

11 Cow Lane Edlesborough

Enquiries - 01525 221630 Appointments - 01525 220333

www.edlesboroughsurgery.co.uk

**Dr Heather White, Dr Lee Mitchell,
Dr Stephanie Johnston, Dr Kirsten Riemer & Dr Shiv Koria**

**Friendly village Practice offering a wide range of health services including
coils/implants, minor surgery, travel advice, in-house blood tests at
surgery, on-line appointments and repeat prescription ordering.**

**Nurse Practitioners offering acute clinics with same day appointments.
Also Midwife. Local District Nurse service. Long established training
Practice with a rotation of qualified doctors.**

EDLESBOROUGH PHARMACY

01525 223181

Pharmacist - Mitul Patel



**Friendly reliable professional service at the pharmacy
and well-established delivery service to the villages.**

Professional advice always available.

**All doctors/dentists/veterinary/hospital prescriptions dispensed.
Herbal/Homeopathic products available. In addition we supply Disability
aids, e.g. Wheelchairs, Incontinence aids, Ostomy/Colostomy products,
Malaria Prophylaxis, Private Flu Vaccinations**

We are happy to order any products you may require.

Instant PASSPORT/ID Photos available

***** New for Everyone with Dunstable Doctors *****

**Patients of Kirby Road, West Street, Kingsbury Court, Priory
Gardens, Eastgate Surgery**

**Sign up now to have your prescriptions sent electronically to
Edlesborough Pharmacy. Collect your medication from us, no car park
charges and a well stocked pharmacy.**

**We have a free weekly delivery service for the housebound, elderly and
for those unable to collect from the pharmacy.**

email mitul.patel5@nhs.net/Tel 01525 223181 for sign-up forms

ASPECT

YOUR LOCAL ELECTRICIAN
TOTTERNHOE
OVER 20 YEARS EXPERIENCE

ELECTRICAL

CONSUMER UNIT UPGRADES (FUSE BOARDS)
LIGHTING - INTERIOR, EXTERIOR & SECURITY
REWIRING
NEW INSTALLATIONS
TESTING & INSPECTION

ALL WORKS TO CURRENT WIRING & BUILDING REGULATIONS
PART P CERTIFICATED & FULLY INSURED



CALL STEVE ON
07976 283969 / 01582 665068
aspect@sparky.me



CHIROPODY HOME VISITING PRACTICE

Julia Reading, BSc(Hons)

17 years experience

- * Corns * Hard skin * Verrucae
- * Thickened/Ingrowing nails
- * Nail cutting * Diabetic feet

Please telephone: 0774 647 2781

for more information or to make
an appointment

The COLLEGE
of PODIATRY

hcpc
registered
www.hcpc-uk.org

Anne Johnson Osteopath
6 Moor End, Eaton Bray

Back, neck and joint pain
Postural tension and headaches
Arthritic and other muscle and joint problems

01525 221958 / 07957 250682

Book by phone or online

www.anne-johnson.net

R.J.O'CONNELL BUILDING SERVICES

EXTENSIONS, PATIOS,
DRIVEWAYS, ROOF REPAIRS
AND PROFESSIONAL
DECORATING SERVICE

TEL: 01296 681323

MOB: 07855 236726



JAMES FALCON-CROSS LANDSCAPING AND OUTDOOR LIVING DESIGN

ALL ASPECTS OF LANDSCAPING
UNDERTAKEN INCLUDING
FENCING, TURFING AND PATIOS
TIMBER STRUCTURES
DESIGNED AND BUILT

VEGETABLE AND HERB GARDENS

01442 843258 / 07769 901325

ONECROSSFALCON@GMAIL.COM



Giblin

The Village
Property Experts

If you are thinking of moving, or are curious about
the value of your property, then call
The Village Property Experts.



Giblin Property • 4a Wallace Drive • Eaton Bray • Bedfordshire • LU6 2DF

01525 220605

info@giblinproperty.co.uk • www.giblinproperty.co.uk • lettings@giblinproperty.co.uk

N.D.S.

Neil Scott
General Building & Plumbing
(30 years experience)

- Extensions • Patios • Fencing
- Property Maintenance • Roofing
- UPVC guttering, soffits & fascia boards
- Kitchens & Bathrooms fitted

Can also

Replace steamed up/misty double glazing

Tel: 01525 221470
Mobile: 07946 626564

FREE ESTIMATES

...

ALL WORK CONSIDERED

NO JOB TOO SMALL

For a top quality
decorating job call

Marc Flack

01442 842639 (Dagnall)

Trading locally for over 15 years
References are available.

Misty Double Glazing?

Over 30
Years
experience.
FREE
Quotes

Over 30
Years
experience.
FREE
Quotes

**KEEP YOUR WINDOW FRAMES...
... WE JUST REPLACE THE GLASS!**

- UPVC • Aluminium • Or Wood

Because we replace just the glass the repair is a
Fraction of the cost of a complete replacement window.

BEFORE



AFTER



mistydoublinglazing.co.uk
QUALITY GLAZING SERVICES

01525 876808

WE ALSO REPLACE BROKEN...

- Glass • Handles • Hinges & Locks
- AND REPAIR...Patio Doors & Conservatories!**



**Café
masala**

Exquisite Indian Cuisine

We Cater for Office or Private Parties and don't
forget to try our Sunday Buffet

10% Discount on all Takeaway Orders Over £12

Fully Licensed & Air Conditioned

Open Seven Days a Week

Hours: 12 Noon to 2.30pm & 6.00pm to 11.30pm

Tel: 01525 22 22 64

63 Bower Lane · Eaton Bray · Dunstable · Beds · LU6 1RB
email: taraque@hotmail.co.uk · www.cafemasala.com



M J Security Systems Limited

www.mjsecurity.co.uk

01582 665022

Intruder Alarms CCTV Door Entry/Access

- Est. for 35 years and NSI Gold Accredited Installer since 1987
- Bespoke systems for commercial and domestic properties
- Free site surveys and quotations
- Takeover/removal/upgrade of existing equipment
- 24 hour/365 day engineer access
- Non contract engineer call out



Absolutely Plastered

**DOMESTIC/COMMERCIAL,
CLEAN AND RELIABLE SERVICE,
FREE ESTIMATES, FRIENDLY ADVICE**



- * Plastering & Coving
- * Floor Screeding
- * Pebbledashing & Rendering
- * Dry Lining
- * Cornices & Mouldings
- * Insurance Work Undertaken

CALL NICK CONWAY ON

Mobile: 07751 830716

Tel: 01296 688981

6 Cotes Way, Wing, LU7 0RB

ARC Contract Services Ltd

- Painting & Decorating ● Plastering
 - Wall & Floor Tiling ● Door Hanging
 - Bathroom & Kitchen Installations
- 20 years experience

All work guaranteed and fully insured

Call Adrian : 01582 539179

Mobile : 07789730580

CHARLES HILL

GARDEN SERVICES LTD

DESIGN | BUILD | MAINTAIN

LANDSCAPE CONTRACTORS

NCH Horticulture City & Guilds Garden Design

A professional company working with all your garden requirements from design to complete landscape.

07773 723236

www.charleshillgardenservices.co.uk

www.alleyearroundbbq.co.uk

Gas Boiler Servicing

Over 40 years experience

Have your boiler serviced by a **Gas Safe**
and **CORGI** registered engineer

Other services available:

Maintenance, repair and installation of all domestic gas appliances including LPG. Boiler installations, Landlord Safety Certificates and Power flushing.

Free Quotes, no call out fee, and free friendly advice on all of the above.

Edwards Gas & Heating Services

Eaton Bray



Tel 01525 220626

www.edwardsgasandheating.co.uk
stevethegas123@gmail.com



ILLUSTRIA

Kennels & Kathotel

Offering your pet a fully licensed Dog
and Cat boarding service.

Purpose built Dog kennels

Individual Cat chalets with outdoor
exercise runs

All in pleasant country surroundings

01582 ~ 665343



ILLUSTRIA
Springfield Road
Wellhead
NR Dunstable Beds
LU6 2JT



Proprietors

Mick, Denise and Michele Garrod



Live a healthy & active life

Free 10 minute advice chats with
our Chartered Physiotherapists
& HCPC Registered Podiatrists

PHYSIOTHERAPY
PODIATRY &
CHIROPODY
PILATES
ACUPUNCTURE
SPORTS INJURIES
MASSAGE
WOMEN'S HEALTH
& PREGNANCY
CARE

St. Judes
physiotherapy, health and well being

01525
377751 
enquiries@stjudesclinic.com
www.stjudesclinic.com



TIME TO MOVE?

**Don't be alarmed,
we're here to help!**

Established in 1999

e: info@plummproperty.co.uk

Five Good Reasons to use **Plumm Property**

Private Offices - direct savings to you on fees

Local Knowledge - from our highly experienced team

Unrestrictive contracts - no lengthy tie-in periods

Marketing to outside area - attracting London buyers

Managing all your needs with a 1st class professional service

From Offer through to Completion of Sale



01296 660230

www.plummproperty.co.uk



Stephen D. Janes

(Established in 1982)

**CARPENTRY, JOINERY
KITCHENS FITTED
PROPERTY MAINTENANCE
TELEPHONE: 01525 220649**

G & J Groundwork & Landscapes

Block Paving * Patios * Driveways
Clearance * Paths * Shingle * Slabs
Artificial Grass * Fencing
Free estimates

Garry

01582 477568 07949 118011

Neil Hodson Associates

*BUILDING DESIGN
STRUCTURAL ENGINEERING*

**PROFESSIONAL BUILDING DESIGN,
ADVISORY AND DRAWING SERVICES**

From plans for domestic extensions to multi-storey offices, commercial buildings and factories.

Structural surveys, site surveying, advice on building defects and Feasibility Studies

Planning Applications and Building Regulation Consents obtained.

**24 HIGH ST TRING
Tel 01442 890894 OR
Edlesborough 222462**



Moren Associates
Publishing Services

Desktop Publishing

**Presentations
Books, Leaflets Brochures
Magazines, Adverts
Design & Layout
Self Publishing**

**Digitising
Scanning of Photos &
Documents, Slides & Videos
Archiving, Photo Repairs
Domain Name, Email
Address &
Web Site Hosting**

01525 229695

enquiries@morenassociates.co.uk

www.morenassociates.co.uk

D Scott and Sons

Home Services Limited



**Plumbing, Heating
& Drains Specialists**

- Boiler repair**
- Boiler installations**
- Powerflushing**
- Annual servicing**
- Landlords certificate**
- Magnetic system filters**
- Radiator valves**
- Oil central heating**

Other services...

We offer a full range of plumbing services including full bathroom refits, showers, sinks, taps, traps & drainage and kitchen appliance installations.

Drainage - including repairs, camera surveys & drain jetting.

www.dscottandsons.net



**contact us now on
01525 791563
07921 670437**





EDLESBOROUGH TENNIS CLUB

Come and play tennis with us at our friendly club on The Green

- High quality floodlight courts with easy booking system
- Coaching available for adults and children from our LTA coach
- Weekly club nights, with balls and floodlights provided

Contact us at: enquiries@etctennis.org or visit us at: www.etctennis.org



Dagnall Community Choir

Spring is finally upon us, and after a gloomy winter of stormy winds and so much rain, we are looking forward to the bright skies and light evenings that April brings.

The change in season has been marked by some wonderful upbeat new music in the choir's repertoire – we have started learning “*Anything Goes*” from the Cole Porter musical of the same name, and “*You've Got a Friend in Me*” by Randy Newman, well known as the theme from Toy Story. It's always very exciting when new sheet music gets handed out at our Monday night rehearsals, and these songs are great fun to sing!

Our repertoire is wide ranging and quite diverse, so as well as well known show tunes by world famous songwriters, we have also been learning some reflective choral pieces, by composers who have a more local connection. Philip Stopford is a contemporary composer who originally hails from Leighton Buzzard, and the choir love his classical choral arrangements. “*Do Not Be Afraid*” is poignant and beautifully harmonious and we are looking forward to singing it in front of an appreciative audience.

Our final new song is entitled “*Vulnerati*”, and has been written by local composer Jeremy Cladd, for Dagnall Community Choir to sing with The South Beds Concert Band at our forthcoming joint concert. We feel very privileged to have been invited to sing this lovely piece of music, and to join forces with such an accomplished group of musicians to bring an evening of entertainment to our community.

Please note, this concert, originally due to take place in May, has had to be postponed – we will advise a new date as soon as we are able.

The next concert in our schedule takes place on **Saturday 12th September**, when we will celebrate the choir's 10th anniversary, with a selection of some of our very favourite songs from the past decade. Watch this space for more information...

As usual the choir is always on the lookout for new members, and we know that there are plenty of people living in and around these villages that are very keen to sing in a choir, so do please come along and join us. For more information, or to get in touch, please take a look at our website www.dagnall-community-choir.co.uk.



EDaN Community Car Service

2011 to 2020

The car service carried its first passengers in May 2011. It was established to fill the gap left by public transport. Although it is run by volunteers it was established with the help of Bucks C.C. and is under the wing of Edlesborough Parish Council.

Since the start the volunteer drivers have taken people on some 4500 return trips. The cost being a mileage charge and any parking fees incurred. While the majority are medical appointments at hospital, doctors or dentist they also include visits to friends and family in hospital, nursing homes and hospices; to do a big shop for those not internet savvy; to take otherwise housebound people to the hairdressers and local clubs organised for their benefit.

The only restrictions are that the passenger should bring a helper if **they** need help to get to their appointment and under 18s should be accompanied by a responsible adult. Most of the drivers have been doing it since 2011 but inevitably we have lost some to house moves, ill health or **simply** old age. **None** have left because they didn't like it! Trips vary in length and duration and if not convenient you can say no to doing that trip and the organiser will find someone else so it can easily fit in with a driver's other commitments.

This is a community service. As a community please get behind it as users and if possible as a driver.

If you want to know more about making a booking please ring Peter Williams on 01442 842506. He needs 48 hours notice as a minimum to book a driver.

If you are interested in driving for the service again ring Peter for more information or email him at peterw500@aol.com.

Appledown's Rescue Dog of the Month



Handsome pure white Staffy Buckeroo is just over a year old. He is quite a strong young lad but manageable, keen to learn and full of affection. He needs to be the only pet in a home where he will have plenty of company, and where he will get training, exercise and fun things to do. Lots of fun and cuddles to be had with this striking young man! He cannot live in Dacorum.

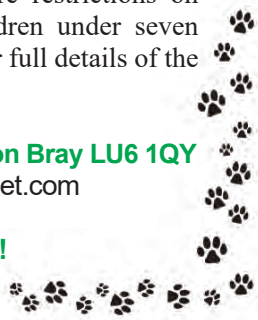
We are open for visits and phone calls every day between 10a.m.-1 p.m. and 2- 4p.m. There are restrictions on rehoming dogs to families with children under seven years of age. Please see our website for full details of the rehoming process.

Appledown Rescue and Rehoming Kennels Harling Road, Eaton Bray LU6 1QY

01525 220383 or e-mail: appledown.kennels@btinternet.com

Website: www.appledownrescue.co.uk

Follow us on Facebook, Twitter & Instagram!!



Dagnall and Kensworth Friendship Group

By 2021 there will have been meetings in Dagnall Village Hall, on the 3rd Tuesday of the month, of (originally) Dagnall over 60s and now **Dagnall and Kensworth Friendship Group**.

The new name emphasises its purpose of providing an opportunity to meet friends or make new ones. All are welcome, though as a weekday event, members are mostly retirees, and anyone willing to help with the organisation are always especially welcome.

The programme for the rest of the year is:

April Coach to Bicester for lunch, garden centre and shops

May Ploughman's Lunch at Dagnall Village Hall

June Afternoon Tea with quiz in DVH

July Afternoon Tea in DVH and visit to local gardens and ice cream

August Tea, biscuits and music

September Coach to Woburn Safari Park open to non-members

October Sausage and Mash Lunch at DVH and Bingo

November Afternoon Tea and speaker at DVH

December Xmas Lunch at DVH

In January 2021 we will celebrate our 50th Birthday. It would be lovely to do this with new members as well as old.

If you would like more information or want to join us in April or for lunch in May please contact Rosemary Holt our Chairman on 01442 843202.

EATON BRAY PARISH COUNCIL

We currently have vacancies
Please come and help run your village

BECOME A PARISH COUNCILLOR

The Parish Council is nine members of the public

If you are just the person to help make a difference and create a better future for local residents, please contact the Parish Clerk.

We look forward to hearing from you.

Heidi Head, Parish Clerk

Email: clerk@ebpc.co.uk – Telephone/Text: 07931479663 - Website: www.ebpc.co.uk
Office Hours: Tuesday/Thursday/Friday 09:30-13:30hrs [messages can be left on answerphone]



EATON BRAY TENNIS CLUB

NEEDS YOU

AS A WARM AND FRIENDLY CLUB WE ARE ALWAYS ON THE "LOOK OUT" FOR NEW MEMBERS OF ANY ABILITY TO THE MORE EXPERIENCED PLAYER.

If you are interested in Tennis we would love to hear from you.

Details of our Club regarding what's on offer and membership rates are available on our club website (ebtfc.org.uk)

We offer a coaching programme for all ages and abilities and you don't even need a racket for these sessions to get you started or back into the game.

JUNIOR TENNIS

Mini Red (aged 4-8 year old)

WEDNESDAY 4:00pm - 5:00pm



Mini Orange / Mini Green (aged 9-10 year old)

WEDNESDAY 5:00pm - 6:00pm



Under 14 Mixed Beginners

MONDAY 5:00pm - 6:00pm



Under 18 Mixed Advanced

MONDAY 6:00pm - 7:00pm

ADULT TENNIS

Get Back Into Tennis

MONDAY 7:00pm - 8:00pm



Tennis Xpress

MONDAY 8:00pm - 9:00pm



CARDIO TENNIS

(Back by popular demand)

★★★ STARTS BACK ON ★★★

WEDNESDAY 22nd APRIL

6:00pm - 7:00pm



Contact coach Sara Bamford on 07561 571578 or sara_leavy@hotmail.com to book your place on any of the coaching sessions.

TO FIND OUT MORE ABOUT OUR CLUB PLEASE VISIT OUR WEBSITE ebtfc.org.uk

17th Eaton Bray Beer Festival

June 5th and 6th 2020

We are sorry, but the “bug” has got to us and we are having to cancel this year’s event.

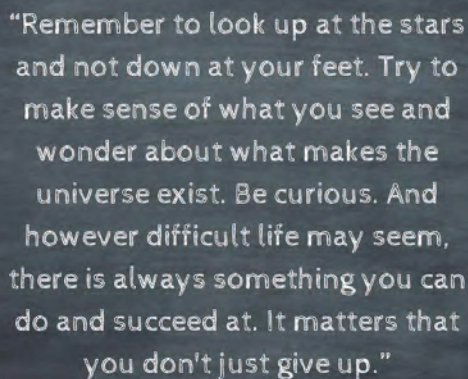
Our problem is that there are a lot of upfront costs to a beer festival, mainly beer!! And with the uncertainty over public events and us being a charity it was not possible, nor wise, to take such a big risk.

BUT fear not, we have rearranged it for **2021, in fact June 4th and 5th 2021**. So, hold your thirst and come and taste some fabulous beers next year.

Unfortunately, we also had to postpone the Village Hall Quiz on April 18th, but we will be holding that on **24th October 2020**.

We just want to say thank you for your support in the past and let you know that we will be back in the swing very soon, October in fact!!

Any queries just call Ross on 07974 715222



“Remember to look up at the stars
and not down at your feet. Try to
make sense of what you see and
wonder about what makes the
universe exist. Be curious. And
however difficult life may seem,
there is always something you can
do and succeed at. It matters that
you don't just give up.”

~ Stephen Hawking ~
1942-2018



Pace
The **BIG** Walk

**Step up and
make a difference**

NEW ROUTE FOR 2020 - 25th April

Walk for Pace and make a huge difference to our inspirational children, who face mobility challenges every single day.

Three routes: 18, 12 and 6 miles route along the infamous Ridgeway.

Sign up today at thepacecentre.org/thebigwalk

Charity No. 1011133



The 2020 Big Walk routes take in the Ridgeway Trail between Watlington and Wendover. There is a choice of three routes: 18m - Watlington to Wendover, 12m - Chinnor to Wendover and 6m - Princes Risborough to Wendover

Registration will take place at John Colet School, Wendover and parking will be available. After registration, walkers will be shuttled to their chosen starting point by coach.

£15 registration fee - You will get; a Big Walk t-shirt, coach transfers, water, snacks and plenty of motivation en route, refreshments, snacks and a warm, celebratory welcome at the end of the walk

For the children at Pace walking can be a big challenge, however taking a few tentative steps can lead to greater independence. You can help transform young lives by putting on your own walking shoes and joining us for the 2020 Big Walk.

For more information, or to sign up contact Kelly on 01296 616973 or kelly.houghton@thepacecentre.org

EATON BRAY PARISH COUNCIL

Eaton Bray Village - Litter Pick, Saturday 18th April 2020



We are planning a litter pick on Saturday 18th April 2020.

A chance for the whole family, local clubs and groups, to get together and do something for the environment. Please come and help clean up the village – every piece of plastic/rubbish collected is a piece of plastic/rubbish that doesn't get into our rivers and seas.

**Our
Environment
is in
Your Hands.**

We will meet in the car park on School Lane at 10am. Please wear strong shoes. We will provide litter grabbers, gloves and Hi-Viz jackets but please bring your own if you have them.

For further information please call Roy Michel 07931 520166 or Marie Brewer 07983422299.

OPEN GARDENS FESTIVAL

23 August 2020

Wanted - Gardens

In Eaton Bray, Edlesborough or Northall

Would you be willing to open your garden for the day to help raise money for charity?

If so, or you would like more information, please contact Kay Griffiths on 222849 or Gordon Gray on 220136.

Ploughman's Lunches



Cakes and stalls,
Games and fun
All welcome

**Saturday
11th July**

11.30—2.00 pm
All Saints Church,

Dagnall

Supporting:

Dagnall C of E School

and

All Saints Building Fund

Eaton Bray WI
invite you to a

**Community
Coffee Morning**

**Thursday 1st May
10.30 - 12.30**

**Eaton Bray
Methodist Hall**

Cakes, Gifts Bric-a-Brac

Entrance £1

including refreshments

CANCELLED

St Mary's Eaton Bray



Saturday 2 April 2020

11:00 - 3:00pm

Eaton Bray Village Hall

Could have a rummage amongst the stalls on offer - some clothes and some pre-loved items! Also a raffle, plants, cakes, books, chocolate and sweets tombola, and delicious lunchtime refreshments, including our legendary bacon butties!

If you would like a stall for £15, contact Barbara Morton on 01525 852368 or email barbara.morton1@gmail.com

FREE ADMISSION!



Northall Baptist Church

A little Church with strong local links

Who is Jesus



During Lent we have been studying a series entitled 'Superstar' thinking about the now, 50 year old 'rock opera', Jesus Christ Superstar by Andrew Lloyd Webber and Tim Rice. One of the studies was entitled 'Who is Jesus?' As we approach Easter, we might well ask 'Who is Jesus?' What would our answer be - the most amazing man who lived, died and rose again? Surely that must be a 'Superstar' although the musical/rock opera did not include the real punch line – the resurrection. There is no Christian

faith without the resurrection.

But 'who is Jesus'? Because of the resurrection, the question is 'who is Jesus?' not 'who was Jesus?' Many people vaguely say that they believe in God but don't feel that they have a clear picture of what that means. If asked many will say they are Christians or some say 'CofE'. Is God different from Jesus? There is a lot of historical evidence that Jesus lived here on earth. Even when Jesus was here teaching, people were asking who he was. Jesus was aware of this and in Matthew 16 v 16 he asked his disciples who people thought he was. They replied that some thought he was John the Baptist resurrected (Matthew 14 tells that King Herod had beheaded him), some thought Elijah or Jeremiah or some other prophet. Many today think Jesus was some sort of prophet as his life here on earth cannot be denied. Jesus went on to ask his disciples who they thought he was. After being with him since he began his public life, seen his miracles, his compassion and his knowledge of what we call the Old Testament, they must have had many thoughts about him. Simon Peter answered Jesus with conviction 'You are the Christ, the Son of the living God'.

This month includes Easter, school holidays, Easter eggs, Easter egg hunts, chocolate, new skippy lambs, longer days, the beginning of warmer weather perhaps? It's a very special time for a Christian as on Easter Day we celebrate Jesus resurrection. However, we also remember Jesus suffering on the cross as he died for us all, to give us forgiveness, if we ask Him.

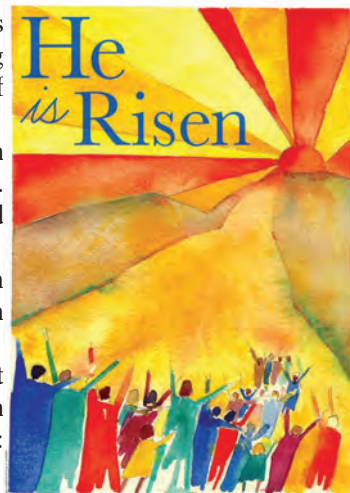
Jesus gives us the answer himself about who he is – in John 11 v 25 he says 'I am the resurrection and the life. He who believes in me will live, even though he dies; and whoever lives and believes in me will never die.'

Our Sunday services are at 11 am. If you come and join in the worship, music and song, you'll get a very warm welcome.

For those interested in the history of Northall Baptist Church, a free copy of the booklet, Rebels in Green Pastures can be supplied or downloaded from our website:

<http://northallbaptistchurch.org/>

✉ Ruth Cox Tel: 07791 425625



THE ANNIVERSARY

18TH - 20TH JUNE

Mum is a formidable, scapel tongued, possessive, cruel but charming woman. Every year since her husband died, mum's held an anniversary party. Her daughter-in-law and three grown up sons have no choice but to attend. They are dominated by her, as the sons work for the family business, a shoddy building company, run by mum. But, at this anniversary party, the worm is turning. The youngest son is bringing a girlfriend to challenge her. Let battle commence.

Tickets £14, concessions £12 (inclusive of booking fee)

Thursday night offer – 4 tickets for the price of 3



THE ANNIVERSARY

By Bill MacIlwraith

A PLAY

18th - 20th June 2020

Leighton Buzzard Library Theatre



Box Office 0300 300 8125

www.lbdg.org.uk

April at the Grove



Film

Onward - 13, 14, 16 Apr
The Lighthouse - 14 Apr
Dark Waters - 16 Apr
Military Wives - 20, 21, 22, 28 Apr

Children's Theatre

Milkshake! Live – Milkshake Monkey's Musical - 10 Apr
The Wizard of Oz - 18 Apr

Dance

Anne Gale School of Dance – School Show 2020 - 5 Apr
The Sleeping Beauty - 19 Apr

Live Music

The Magic of the Beatles - 4 Apr
Pop Divas Live! - 6 Apr
The Best of That'll Be The Day! - 8 Apr
The Illegal Eagles - 9 Apr
Soul Legends - 17 Apr
Bowie Experience - 24 Apr
Seven Drunken Nights – The Story of the Dubliners - 29 Apr

Encore Screening

Kinky Boots - 13 Apr

Live Screening

Swan Lake - 1 Apr
Cavalleria Rusticana/Pagliacci - 27 Apr

Literature & Talks

Dom Joly's Holiday Snaps – Travel and Comedy in the Danger Zone - 10 Apr

Theatre

Waiting for Godot - 11 Apr

Opera

Aida - 7 Apr

Workshops

Easter Theatre Club - 6 - 9 Apr
GPP Auditions: The Sound of Music - 26, 30 Apr

Comedy

Barnstormers Stand Up Comedy 2020 - 30 Apr
Rhod Gilbert: The Book of John - 2 Apr
Jethro: The Final Goodbye - 15 Apr
Josh Widdicombe – Bit much - 23 Apr
Chris Ramsey - 25 Apr

Ticket prices vary; for more information or to book, call the Box Office on 01582 60 20 80 or visit the website at www.grovetheatre.co.uk.

All Saints' Church, Dagnall

Services in April 2020



Sun. 5th April	10.30 am	Morning Service at Kensworth Methodist Church
Fri. 10th April	6.00 pm	Good Friday Service
Easter Day		
Sun. 12th April	9.00 am	Eucharist
	10.30 am	Family Service
Sun. 19th April	10.30 am	Family Communion
Sun. 26th April	10.30 am	Morning Service
Sun. 3rd May	9.00 am	Eucharist
	10.30 am	Morning Service at Kensworth Methodist Church



If you are interested in your child attending Sunday School, as an introduction to church-going, please contact Liz Coates at lizcoates@btinternet.com



Eaton Bray Methodist Church

Our first service in February was led by Elisabeth Bibbings, our Circuit Lay worker, and always a welcome preacher at our chapel. She highlighted Jesus's concern for the outsiders, the outcasts, the 'other', reminding us that, where Jesus cares, so should we. On our second Sunday, in the Café Service we explored the concept of 'the Lighthouse', a dependable reference point in times of danger and confusion. Ben Williams, our visiting preacher provided us with a stimulating range of activities, revealing the need for guidance, trust and steadfastness in the midst of struggles. On the third Sunday, Joan Gregory gave us a thoughtful and challenging message; God's law affects the whole of our being. Good actions are important but we need to

ensure that our thoughts are just as good. We finished the month with a fine sermon from Colin Quine, who gave us a modern translation of the Beatitudes, presenting the truth of God's message with a great impact. At a time when the demands on us are heavy, we often feel overwhelmed but we should press ahead knowing that God will provide the resources.

NB: All our social events including Saturday Café Community and Thursday Social Afternoons have been cancelled to minimise the risk of Coronavirus infection to our older members and guests.

Methodist Lay Worker's Letter

Dear Friends,

The Inter-Connectedness of Things

No, this is not the title of a book by Professor Brian Cox or Stephen Hawking. It's actually the title of a piece of music, one of those relaxing abstract pieces that you might hear in the background at a spa or while listening to a mindfulness playlist.

Inter-connectedness is something that has been very much on everyone's mind recently. A man comes back from a conference in China. Someone goes on holiday to Tenerife or Italy. Lots of people go on cruises around the world – and they come home, feeling well – and in a few days, they have to stay at home, while everyone they come in contact with – health workers, colleagues, family, friends – wonder if they are carrying the dreaded virus.

Coronavirus has shown us how connected we all are, how the strands of life bind us together in common humanity.

Easter is a time when God showed how he was intimately connected with us. Jesus came, not only to teach, preach and heal the sick, but to pour out all his love on the cross. In so doing, he healed humanity's broken connection with its Creator. Christians do not ever claim to be perfect, but we know we have been put right with God, though we need to repeatedly say sorry for getting it wrong.

What does Easter mean to you? A chocolate-fest? Time for DIY or attacking the early gardening jobs? A roast lamb dinner with family? It means so much more, so very much more than that. Easter is when God showed us how very connected to us ordinary humans he is.

My prayer is that among the eggs and chocolate, you will find the true meaning of Easter for yourself.

A very Happy Easter!

Elisabeth Bibbings

Plantar Fascial Pain

Plantar fascial pain affects around 1 in 10 people in the UK and is pain running along the sole of the foot or from the underside of the heel bone (calcaneus). It is most common between the ages of 40 and 60 and affects twice as many women as men.



If symptoms persist for more than 4-6 weeks, you should consider seeing a physiotherapist for a more comprehensive

assessment to get to the root of your problem. A Podiatrist opinion and assessment of your foot posture on whether you would benefit from orthotic innersoles may also be beneficial. Here are some simple tips that might help to manage plantar fascial pain:

1. Avoid walking, running or high impact exercise - focus on lower impact alternatives such as cycling, cross training or swimming.
2. Calf exercises and stretches/massage are important - a stronger calf muscle

will help to offload the plantar fascia. Reducing calf tension from the calf muscle with stretching or self-massage (using a foam roller or tennis ball) will reduce the strain from the Achilles tendon into the plantar fascia.

3. Taping and compression can be useful - a Strassburg sock night time splint or taping of the plantar fascia can reduce symptoms and allow you to exercise more.
4. Gel heel supports can help cushion or reduce the shock from walking by reducing the forces transmitted through the heel of your foot.

St Judes have an experienced team of Physiotherapists and Podiatrists and are located near Morrison's.



St Judes Clinic
26 Lake Street
Leighton Buzzard
LU7 1RX

☎ ✂ 01525 377751

📧 www.stjudesclinic.com
enquiries@stjudesclinic.com

MEETING PLACE AVAILABLE

Does your leisure group/voluntary organisation need premises for your regular meetings?

Edlesborough Methodist Church, centrally located on the corner of Cow Lane opposite The Green, has accommodation that might suit your purpose.

Please contact 01525 223093 for further details.



Dunstable & District Local History Society 14th April 7.45pm

Sex, Drugs...and Tapeworms

Popular speaker Kevin Varty uses a display of advertisements from old newspapers to illustrate his talk about remedies in Victorian times for a range of bodily concerns...everything from corsets to indigestion tablets!

Methodist Church Hall, Dunstable
Visitors always welcome £2



Eaton Bray Cricket Club

Ground preparation is well under way and even after all that the weather has thrown at us this winter the playing surface and outfield look cracking. Massive thanks should go to James and Ozzy for their hard work and dedication to the club.

Winter Nets have been a big success and will continue until April 15th at Dunstable Town Cricket Club.

A date for the diary is April 4th when we will be having an "Open Day" between 11am and 1pm. A chance for people to come for a look round and see the facilities and how the club is run. Members will be on hand for a cuppa and chat should you wish. Later in the day the bar will be open for the Grand National. Fundraising for the new pavilion is an off field priority this year with boundary advertising available at the ground charged at £450 for a 3 year contract.

There is also the opportunity to sponsor a match ball for £30. All advertisers will receive coverage on our Social Media pages as well as a mention in Focus and any other publications that we will use throughout the year. More fundraising ideas are in the pipeline and hopefully will be on show on our stand at St Marys Carnival on July 4th. For more information please contact us on Facebook or Twitter.

We have 2 home friendly fixtures both

starting at 1pm on April 18th against New Bradwell and April 19th against Roving Reporters before the season opens the following week where the 1st X1 are at home to Old Bradwell and the 2nds travel to Shenley Church End. All support will be appreciated.

Eaton Bray Cricket Club are always on the lookout for new players of any age or ability. We are a progressive family friendly club fielding 2 senior teams in the FCCL on Saturdays and a senior side in the Beds Sunday League.

We also run 6 junior teams at under 9, 2 at under 11, 2 at under 13 and an under 15 side. Finally we would like to thank Meadow Marquees Houghton Insurance and the Focus for their continued support. Please enjoy your cricket with Eaton Bray in 2020.



Eaton Bray Cricket Club

Est 1914

**2 senior teams
FCCL Saturdays**

**1 Senior team
Beds Sunday League**

**6 Junior teams at U9, 2xU11,
2xU13 and U15**

Come and join a progressive family club. For more information please follow us on Facebook & Twitter

@EatonBrayCC

**Enjoy your cricket with
Eaton Bray in 2020**



St Mary's 100 Club

The lucky prize-winners are:

February 2020

1st prize – Geoffrey Wheeler

2nd prize – Robert Dickson

3rd prize – John Plater

LOCAL HERALDRY

BY JOHN HOCKEY

In this series, we take a look around local towns and villages to find interesting and unusual heraldry.

LADY MARIAN ALFORD

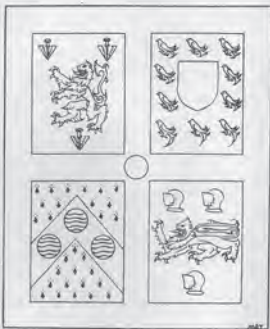
Marianne Margaret Compton, who became known as Lady Marian Alford when she married John Hume Cust Egerton, Viscount Alford, was a remarkable woman with artistic and organisational skills the envy of many of her contemporaries. Born in Italy in 1817, her 71 years were full of interest and the area around Ashridge benefitted from her design skill as much as her ability to get things done. Reading rooms, churches, farms and cottages were all repaired on her watch and new almshouses and schools were built.

She looked after two sons until they became of age when her husband died, ran the estates of both Ashridge and Belton in Lincolnshire and found time to write a seminal work 'Needlework as Art', published in 1886. In addition, residents of Ringshall and Little Gaddesden will no doubt have been grateful for the introduction of a piped water supply in 1857, which she masterminded.

Along the way she decided to re-design the Monk's Garden at Ashridge, which had been created by Humphrey Repton. Her creative design consisted of the coats of arms of the four families connected with Ashridge, namely Egerton, Brownlow, Compton and Cust, all planted in box and yew. The wilful nature of plants makes recognising the arms quite hard today but luckily we have the original design complete with description or blazon to tell us what was intended (see panel).



Suggested identification of the four armorial beds.



1. Egerton: Argent, a lion rampant gules, between three pheons sable.
2. Brownlow: Or, an inescutcheon within an aisle of martlets sable.
3. Cust: Ermine, on a chevron sable 3 fountains.
4. Compton: Sable, a lion passant or, between three esquires' helms argent.

Along the way she decided to re-design the Monk's Garden at Ashridge, which had been created by Humphrey Repton. Her creative design consisted of the coats of arms of the four families connected with Ashridge, namely Egerton, Brownlow, Compton and Cust, all planted in box and yew. The wilful nature of plants makes recognising the arms quite hard today but luckily we have the original design complete with description or blazon to tell us what was intended (see panel).

The Compton coat of arms has a black background with a golden lion walking along between three silver esquire's helmets.

Marian lived at Ashridge until her second son married in 1868. She then moved to Alford House in Kensington, which she had designed for herself. There she entertained royalty, statesmen and artists and continued creating accomplished watercolours.

Lady Alford died at Ashridge in February 1888, leaving an artistic legacy unrivalled in her time, including the revised Monk's Garden shown here.

Next time: Harpenden

Make your house a home with
blinds and awnings from

**VANSAR
BLINDS** 

www.vansarblinds.co.uk

Find us on Facebook



- Free No Obligation Measuring And Quotations
- All Blinds Made To Measure
- Choose In The Comfort Of Your Own Home Or Workplace
- Family Run Business
- Large Range Of Quality, Affordable Fabrics And Colours To Choose From

01525 220477 or 01582 699565 sales@vansarblinds.co.uk

JoAnn Latus School of Dance



- Ballet, Tap and Modern classes for children aged 3 and upwards
- Adult Ballet classes starting in the New Year
- Professionally trained teachers and safeguarding policies in place
- Regular exams, shows and theatre trips

Classes held in Buckinghamshire,
including Eaton Bray on Tuesday
and Friday evenings

For more information contact JoAnn Latus:
Tel: 07800 518654

Email: info@jolatusdance.co.uk

Web: [@jolatusdance](http://www.jolatusdance.co.uk)

McTimoney CHIROPRACTIC



Margie Craib BSc BHSI DC AMC MMCA
Human and Animal Treatments

Ashridge Farm, Ringshall, Berkhamsted, Herts HP4 1ND
Telephone: (01442) 842729

General Chiropractic Council Registration No. 293

Spinney Landscapes & Gardening Services

All Aspects of Grounds Maintenance
Leaf Clearance • Grass Cutting/Scarifying
Patios & Driveways • Pressure Washing
Weed Control • Tree Work & Wood Chipping
Fencing • Snow Clearing • Mini Digger Hire
Tel: 01525 839622 Mob: 07876 500292
Email: spinneylandscapes@gmail.com
www.spinneylandscapes.com



Curiosity Creativity Community

Dagnall C of E school is a nurturing and inclusive learning community, situated at the foot of the Chiltern Hills.

Ofsted 'good' (June 2018):

"A positive learning environment where pupils are exceptionally well cared for and nurtured."

SIAMS (July 2018):

"The school is outstanding at meeting the needs of all learners."

We offer a unique, family feel where children benefit from small class sizes and personalised learning.

We provide a creative environment where children feel safe to challenge themselves and to develop their love of learning.

Spaces available
To arrange a visit please call:
01442 842473
or visit: www.dagnall.bucks.sch.uk
email: office@dagnall.bucks.sch.uk



We are a nurse-led home care provider committed to delivering the very highest standards of care.

Support from our dedicated team gives you or your loved one the peace of mind and confidence to be able to continue living at home.

Family-owned and managed, we are independent and do not belong to a national chain or franchise. We are registered with the CQC, number 1-1499072841.

To talk to us about your requirements please call Helen Yates RGN on 07920887414 or 01442 843064 or email helen.yates@yourownhomecare.co.uk



www.yourownhomecare.co.uk

NG AUTOS

MAKING YOU AND YOUR CAR HAPPY

**CAM BELTS • MOT'S • MOT REPAIRS • HEAD GASKETS
AIR CONDITIONING • RECOVERY/BREAKDOWN
DIAGNOSTICS SERVICING • BRAKES • SUSPENSION
CLUTCHES • GEARBOXES • TYRES • WHEEL BALANCING
WHEEL ALIGNMENT COLLECTION & DELIVERY**

CALL NICK OR GARY

01525 220850 OR 07972 198615

**SPARROW HALL FARM, LEIGHTON ROAD,
EDLESBOROUGH LU6 2ES**



Reception



Service Bays



MOT Station



DM SECURITY

Commercial & Residential Alarm Systems

CCTV • Access control • Intruder Alarms • Locks
Electrical Installations • Fuse Boards • Re-wires

John Dorman: 07483 872017 Chris Mahoney: 07801 552113
20 Slicketts Lane, Edlesborough, Dunstable, Beds, LU6 2JD

D.A. Windows, Doors & Conservatories

Emails: dawindows@live.co.uk
mimcavinder@hotmail.com

Telephone: 01582 485443

Mobile: 07807 798387

- Installation of UPVC windows, doors and conservatories
- Composite doors and side lights – choice of design and colours
- Replacement glass units and window maintenance

QUALITY PRODUCTS

QUALITY WORKMANSHIP

QUALITY PRICES

Contact us for a quotation or to discuss your requirements

ACCREDITED MEMBER
OF THE INCORPORATION
OF PLASTIC WINDOW
FABRICATORS AND
INSTALLERS

GOVERNMENT APPROVED
CERTASS REGISTERED
CONTRACTOR REG. NO.
001634

Leighton Aerials

Established 1970

For all your aerial
and satellite needs
call Colin on

01525 374742



Edlesborough School

and Pre-School



Together we achieve the extraordinary

For more information about our School, Pre-School and
Before and After School facilities,
visit our website at:

www.edlesborough.bucks.sch.uk

Ofsted
Good
Provider





The Gentleman Gardener

Let your local RHS qualified gardener make your garden beautiful, from simple garden maintenance to total redesign of your garden.

Please call Barry on
01525-222451 or
07541196384

to pop round for a free chat.



**A McClelland
Pest Control**
FOR FAST RESPONSE CALL:
Mobile 0777 494 8415
Office 01582 872158



*specialists in: wasps - bees - ants
hornets - fleas - cockroaches - bed
bugs - pigeons - magpies - rabbits
rats - mice - moles - squirrels
foxes - mink - feral cats*

UNMARKED VEHICLES
For further information please call or email
amcclellandpestcontrol33@gmail.com



Parties Wedding Receptions Stage Productions
Fitness Classes Business Meetings Beer Festivals
Film Shows Club Meetings Keep Fit Quiz Nights

Eaton Bray Village Hall

Capacity for 220 People Parking for 70 Cars Meeting Room Countryside Views
Bar Facilities Kitchen Facilities Full AV Facilities Baby Changing Wheelchair Access



For bookings or enquiries call: 07975 797 202
email: bookings@ebvh.co.uk

www.ebvh.co.uk



WAGGING

wonderful dog grooming

Here to take care of your mucky pup!

Your local dog grooming service in Eaton Bray

1-2-1 care for your dog

NO cages!

07580 343396

www.waggingwonderful.co.uk

info@waggingwonderful.co.uk

James B Chadburn FBHI

Fine Antique clocks & Barometers

Specialist in repairs & restorations.

Valuations & clock finding service.

Advice & assistance on formation & disposal of private clock collections.

Quality clocks/barometers Bought & sold.



Telephone 01525 221165

Mobile 07790 000629

E-mail: info@jameschadburn.com



Contact James direct on:

Mobile: 07771 698 151

Office: 01582 343 123

Email: james@andertonelectrics.co.uk



See our feedback on Check a trade

www.checkatrade.com/andertonelectrics



- ✓ Free quotations, no obligations
- ✓ Emergency Work – day or night
- ✓ Domestic or Commercial
- ✓ A name you can trust



www.andertonelectrics.co.uk



All Aspects of Pressure Washing

- Roofs Cleaned and Coated
- Block Paving Refurbished
- Driveway / Patio / Pathway Cleaning
- Building Fascia / Cladding Cleaning
- Gutter Vacuuming / Fascia & Soffit Cleaning
- Graffiti / Chewing gum removal
- Conservatory Cleaning



0800 298 5883
www.greatoutdoorscleaning.co.uk



TODDINGTON

INDEPENDENT FINANCIAL ADVICE



DO YOU NEED FINANCIAL ADVICE?

We can help you to review your current or proposed,

Mortgages, Insurances, Pensions & Investments, Equity Release, Inheritance Tax, Wills and Trusts, or a general review of your current position?

'As a mortgage is secured against your home, it may be repossessed if you do not keep up the mortgage repayments. The financial conduct authority does not regulate tax and estate planning or will planning'

Unlike some TV adverts we don't charge a fee for equity release, so no broker fees added to your loan! 'Equity released from your home will be secured against it'

LOCAL OFFICE: Toddington

Contact: Philip Hadlow
Tel/Fax: 01525 874100
Mobile 07768 277 532
info@toddingtonifa.co.uk
www.toddingtonifa.co.uk

Free Will with Investments & Pensions placed through us of over £50,000 and within 6 months of investment
Talk to us for a free initial consultation

Toddington Independent Financial Advice Ltd is authorised and regulated by the Financial Conduct Authority.
Registered office: 1 St John's Barns, Griffin Farm, Conger Lane, Toddington, Bedfordshire, LU5 6BT
Registration Number: 760687 Company Number: 9931606

EDLESBOROUGH



NEW HOME, NEW PRICE

£450,000

INCENTIVES AVAILABLE

3 BEDROOMS
EN-SUITE TO MASTER
STUDY
CARPORT

READY FOR OCCUPATION

HOUSEHOLD
estate agents
— New Homes —

Call 01582 477077
now to arrange your appointment
email dunstable@house-hold.co.uk

Not a Lot of People Know This...

Eaton Bray Model Sportdrome



Eaton Bray Sportsdrome was opened in the late 1940s by Douglas Arthur Russell the owner of Aeromodeller Magazine. It was, for a short time, to become the Mecca for model enthusiasts from all over the world.

Modelling activities in Britain have always experienced opposition and had restrictions imposed, which have increased dramatically of late. Issues of noise and pressure through commercial and leisure development continue to impact on the hydro lakes and flying sites available. The situation for tethered cars has been even more difficult with no tracks at all in this country since the demise of Mote Park, Maidstone in the 70's. Enthusiasts would love to see a track established in this country and model flyers continue to petition the BMFA to create a central flying site. Yet sixty years ago, such a facility did exist. This was the Model Sportsdrome at Eaton Bray in Bedfordshire, and the man behind this modelling mecca was D.A. Russell the Managing Editor of the 'Aeromodeller'.

He is the author of more standard works on the subject than any other man and is associated with a group of companies giving a complete service to those interested in full sized and model aeronautics.

Aeromodeller - August 1945 Eaton Bray Model Sportsdrome

As stated in last month's Editorial, full facilities and amenities will not be available until next year, but from Saturday September 15th of this year, the Aerodrome will be available on Saturdays and Sundays for the flying of all types of model aircraft from 10 a.m. until 9 p.m.

Admission charges will be 1s. per adult person, 6d. per person under sixteen years of age. Both these charges will be reduced by half for admission after 3 p.m. on both days.

Water for drinking purposes and lavatory accommodation for both sexes will be available free. A limited amount of protection from rain, will, it is hoped, be available, if required.

Cars, motor cycles and bicycles may be parked round the sides of the Aerodrome.

There will be no organized competitions this year, but club members may organize competitions amongst themselves, subject to non-interference with the flying of other visitors.

Flying may take place on any part of the Aerodrome subject to the general directions of the Aerodrome Manager.

Owing to the grass having been sown as recently as the Spring of this year, the normal close-cropped surface will hardly have been consolidated. Small temporary take-off boards will be available.

Dunstable & Luton Journal - October 12th 1945

First in The World

In the early part of next year, Eaton Bray will be the centre of the world's first model Sportsdome.

Now under construction it will afford aero-modellers the opportunity of enjoying their hobby under the most favourable conditions.

The site which is just over 70 acres in the form of a square with 600-yard sides was licensed as a civilian aerodrome just before the war, and is regarded as an ideal spot.

Other reasons for the choice are that the ground lies in a sheltered part and trees and other obstructions are remarkably few. From the ground around it will be easy to watch planes in flight or to retrieve straying machines.

The site is being laid out for the flying of all types of model aircraft and there will be every amenity both for visitors and those who do the flying.

All the Year Round

The ground is large enough for clubs to occupy different parts without interfering with the flying arrangements of others. There will be all the year-round facilities and particularly during the summer months.

Central figure and inspirer of the project is Mr D A Russell the well-known pioneer in model aeronautics. He was the first man in the country to set up a wind tunnel and other essential equipment for research purposes.

Courtesy of eatonbray.com website





EASTER CROWDS AT EATON BRAY

GOOD FRIDAY, the 19th, saw the arrival of the first visitor to Eaton Bray, when R. G. Lishman, of King's Langley, was given permission to pitch his tent in advance of the official opening of the Flying Season on April 20th. The full camping contingent included a party of six from Birmingham, and visitors from Selby, Yorks., Biggin Hill, Kent, Leicester, London, and most of the neighbouring towns.

Saturday dawned with the promise of fine weather and soon the crowds began to arrive, as the *Daily Express* reporter was later to observe, "with their models tucked underneath their arms." And how they came!

The refreshment marquee came in for its share of attention. There was a happy, carefree atmosphere that all the organisation in the world could not have engendered if it was not so patently obvious that everyone was enjoying his or herself just as they liked best.

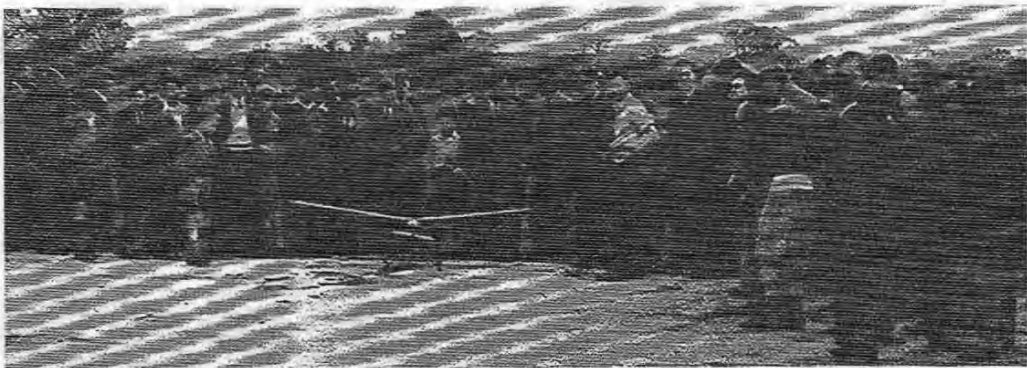
A number of well-known modellers and their models put in an early appearance. There was J. S. Evans, of "Viking" fame, with a biplane developed from his mid-wing "Middy" that took kindly to the evening air. One or two neat petrol jobs made an appearance, including one flown by a test pilot which demonstrated

a truly American climb—until it banked a little too near the deck.

Sunday showed an increase in the attendance—with cars stretching well into the distance. Mr. P. E. "Nats-neeze" Norman arrived with his flight of miniature petrol models, and "Nimbus"—a descendant of "Old Nog"—towering over them all. A flight was tried about mid-day and the high-aspect ratio soarer climbed like a bird to about a thousand feet, where it made contact with a cotton wool cumulus cloud and disappeared ever upwards. That was the last of "Nimbus" for Sunday. Later that afternoon a small crowd assembled near Fulham, watching what a less knowledgeable onlooker declared to be a new sort of Doodlebug coming in to land—it was "Nimbus"! The model had been aloft for over three hours and covered about 40 miles as the crow flies. Howard Boys in his turn produced some excellent rocket propelled flights with "Flaming Ptero" and his new scale model "Vampire," which gave a fascinating display until the rockets proved too much for the balsa.

Monday was, of course, the culminating day, when everyone who was "anyone" put in an appearance. The trains were packed with modellers, and residents

Mr. Maile, in white shirt, assisted by Mr. Rider of "Rider Wheels," awaiting the timekeeper's signal to start in the petrol contest in which he took second place.





Life is a circle of happiness, sadness, hard times, and good times. If you are going through hard times have faith that good times are on the way.



J Able bathrooms DESIGN - SUPPLY INSTALLATION

We have suites in a wide range of styles to suite your budget.

Please ring for a home consultation and quote.

All building, tiling, and electrical work included.

07891 449077

W: www.jablebathrooms.co.uk

E: ableplumbing@hotmail.co.uk

DUST IF YOU MUST

*Dust if you must, but wouldn't it be better
To paint a picture or write a letter.*

Bake a cake or plant a seed.

Ponder the difference between want and need?

*Dust if you must, but there's not much time.
With rivers to swim and mountains to climb,
Music to hear, and books to read.
Friends to cherish and life to lead.*

*Dust if you must, but the world's out there,
With the sun in your eyes, the wind in your hair,
A flutter of snow. a shower of rain.
This day will not come round again.*

*Dust if you must, but bear in mind.
Old age will come and it's not kind.
And when you go - and go you must -
You, yourself, will make more dust.*

Rose Milligan

Shared by Silversurfers.com





Your Buckinghamshire, your council A better future together

From April 2020



Your council is changing

On 1 April your council will change. The new Buckinghamshire Council will replace all five of the district and county councils in Buckinghamshire, and over the coming weeks and months you'll start to see some changes as you come across the new look council.

What does the new council mean for me?

- **The same services, better together.** For most people there will be no change to the day-to-day services you use. This includes bin collections, looking after our elderly and young people, libraries and parking. The focus for the future will be on improving these services as a new council together.
- **One council.** Getting in touch with the council will be simpler because you'll only need to contact one council for all the services currently provided by the county and district councils.
- **Face-to-face advice, support and information** from your council through a network of 17 local Council Access Points based at the heart of your local community – in current council offices and libraries across the county. The five council offices in Aylesbury (Walton Street and The Gateway), High Wycombe, Amersham and Denham will be 'access plus' points, geared up to handle more complex enquiries.
- **Stronger links with local communities.** Buckinghamshire Council councillors will work closely with local people and community organisations to understand and respond to the key issues affecting their local area through 16 Community Boards.

Who will be my local councillor on the new council?

There will be 147 councillors elected to Buckinghamshire Council. Elections for the new council will take place on 7 May 2020. Until these newly elected councillors take up their posts, your current elected members from the five existing councils will continue to serve your communities.

How can I find out more?

For regular news and updates, follow @BucksCouncil on Twitter and Facebook or find out more at www.buckinghamshire.gov.uk.

Your Photos

A Heron on the Grand Union Canal by Sally Siddons

Primroses in Edlesborough Churchyard by John Hockey





City & Guilds

**Leighton
Plumbing & Heating**

Oil Boilers

Serviced & Repaired

01525 385250
07774 567472

Email - leighton-plumbing@ntlworld.com
Website - leightonplumbingandheating.co.uk

Please see our reviews on
boilerjuice.com / myboilerservice.com

Oftec registered & insured

Phasels, Billington Road, Leighton Buzzard
LU7 9HH

Crittercare

Dog walking & pet sitting

We look after any animal from

Hamsters to horses

Prices start from £6 per day

Tel: 07756930814

Email: crittercare142@hotmail.com

Or find us on Facebook @crittercare142

Laptop & Computer

Server, Printer, Apple, Setup, Repairs,
Data recovery, Internet, Wireless, Network,
Virus infection, Home/Office computer problems.

Services from £40.

Your local IT support, 7 days services, we visit you

No Fix - No Fee

Qualified, Experienced

PClaprepairs@gmail.com

01525 306316 – 07925 338435



**FREE INITIAL
CONSULTATION**

**ALL ACCOUNTING,
PAYROLL AND TAXATION
SERVICES COVERED**

Specialising in New Business Start-Ups

- Fixed Fee Quotes
- Unlimited Email and Telephone Support
- Back Office Solution

(dealing with your back office accounts function
enabling you to focus on the rest of your business)

Please contact us for more information...

Gable End, Sparrow Hall Business Park, Leighton Road, Edlesborough, LU6 2ES

Call us on... 01525 229 539

enquiries@rileyaccounts.co.uk • www.rileyaccounts.co.uk

[@RileyAccounts](https://www.facebook.com/RileyAccounts) • Also on [f](https://www.linkedin.com/company/rileyaccounts) [in](https://www.linkedin.com/company/rileyaccounts)

"YOUR LOCAL ACCOUNTANT"



Stoten Gillam
chartered accountants
chartered tax advisers

**Our aim is to provide an outstanding
professional, cost effective and
friendly service**

- ✓ Established over 50 years
- ✓ Traditional values with forward thinking and modern technology
- ✓ Full range of business and personal accountancy and tax services
- ✓ Latest cloud software
- ✓ Free initial meeting



Tel: 01582 608601
99 High Street South,
Dunstable, LU6 3SF

Contact us today:
enquiries@stotengillam.co.uk
www.stotengillam.co.uk
[@stotengillam](https://www.facebook.com/stotengillam)

toni's tootsies

mobile foot health care

-  **Fungal Infections**
-  **Ingrowing Toenails**
-  **Callus/Hard Skin**
-  **Cracked Heels**
-  **Nail Reconstruction**
-  **Verrucas**
-  **Nail Trimming**
-  **Corns**



Toni Nash is a fully qualified Foot Health Practitioner based in Slapton, Bucks... and she's ready to take your Call!

07484 749393
 tonistootsies@gmail.com
 www.tonistootsies.co.uk

CDM Builders Ltd

07984086029

- GENERAL BUILDING
- NEW HOMES
- EXTENSIONS
- CONSERVATORIES
- ALTERATIONS
- BRICKLAYING
- GROUNDWORK
- PATIOS
- DIGGER AND/OR DRIVER FOR HIRE

With over 20 years experience in the building trade

All aspects of work undertaken by our own professional tradesmen to a very high standard

Please contact Clive for a free quotation
 T: 01525 222605 M: 07984086029
 Email: Clive.munt@hotmail.co.uk

GENERALMECHANICALSERVICESLTD

VEHICLE SERVICING AND REPAIRS



- MOTs • MOT REPAIRS • SERVICING
- DIAGNOSTICS • TRACKING • AIR CONDITIONING
- TYRES • CAMBELTS • COLLECTION & DELIVERY
- WELDING & FABRICATION • BATTERIES

All vehicles - all mechanical work!

1 HONEYWICK LANE, EATON BRAY, LU6 2BJ
 reception@general-mechanical-services.co.uk
 www.general-mechanical-services.co.uk



01525 222876



Peace of mind for motorists.

All Trees & Hedges

Reliable & friendly service • Family run business
Competitive prices • Qualified advice • Fully Insured

Tree work undertaken

Tree felling • Precision dismantling • Crown reduction
Crown thinning • Crown lifting • Formative pruning
• Stump grinding • Stump removal
Deadwooding • TPO / conservation area work

Hedge work undertaken

Hedge reduction • Hedge planting • Hedge trimming
Shrub clearance • Hedge laying

Other Services

Grass Cutting • Fencing • Green Waste Recycling • General
Garden Maintenance • Tree Lighting • Logs / Kindling

CALL NOW ON:

07701 094 934
01525 220 823

E: info@alltreesandhedges.com

W: www.alltreesandhedges.com

WHITE WATER

EXTERIOR CLEANING SPECIALISTS

Driveway & Patio Cleaning

"We use an innovative, biodegradable method that eliminates dirt & kills mould, blackspot & algae, sanitising the surface. The results last 4 to 6 times longer than pressure washing alone."

- We also clean:
- Conservatories
 - Decking
 - Windows
 - UPVC
 - Solar Panels

01525 234120 | 07807 973871

email: info@white-water.co.uk

www.white-water.co.uk



Frustrated with Home Technology?



Then contact us to solve your home technology problems. We can help with:

- WiFi/Broadband boosting or extending
- Smart TV and Wireless speakers
- Smartphone, PC and Printers
- Smart Home installations



Tel: 01296 534537

www.thetechnologydoctors.co.uk



fitness 4 fun



Get those muscles working! Tone and strengthen arms, legs, bums and tums – you'll look and feel great.

Why not give it a go? Only £6 per week for one hour of fun fitness. Pay-as-you-go, come when you can.

Come along and join our friendly group.

Everyone welcome.

No need to book – just show up.

What: Fitness4Fun with Kay

Where: Edlesborough Memorial Hall

When: Every Friday, 10:00-11:00 am

OAKSTONE

ARCHITECTURAL DRAWINGS AND PLANS

Oakstone Ltd specialises in design, drawing and building plans for:

- Planning applications
- Building Control approval
 - Residential
 - Commercial
 - Agricultural
 - Listed Building Consent

To arrange a FREE initial consultation please contact:
ash@oakstoneltd.com or call **07884 268079**

For more information about previous projects undertaken and what we do please visit:
oakstoneltd.com



...for all your pest solutions

Peter Tong
(RSPH Level 2)

01525 220653
07958 669706

Email: peter@nimbypest.org.uk
www.nimbypest.org.uk



JACKSON
CONSTRUCTION UK

PASSIONATE ABOUT YOUR PROJECT

07527 710 119

dave@jacksonconstructionuk.co.uk
www.jacksonconstructionuk.co.uk

Extensions & Conversions
Kitchens & Bathrooms
Driveways & Patios
Fencing & Landscaping



Lisa Arch Home Styling

Transform your home with my Dunstable - based home makeover service — designer looks tailored to fit your taste and budget.

07528 220311

Lisaarchhomestyling

lisaarchhomestyling@outlook.com



Pampered Pups

Mobile dog groomers

Call to book an appointment

07394 672646

pampered.pups8@gmail.com

www.pamperedpupsuk.com

We come to you

No Mess

No Stress



Grooming Washing Drying Nail Clipping



ARCHITECTURAL DESIGN
CONSULTANCY

Residential extensions and
conversions

Retail and Commercial
Free initial consultation

Planning and Building Control
Approvals Obtained

O: 01442 842 917

M: 07795 557 911

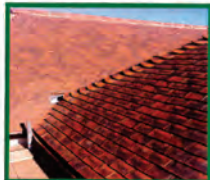
E: info@peakadc.co.uk

CLARIDGE & HALL BROS LTD

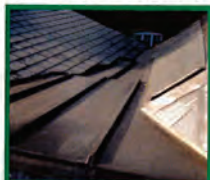
ROOFING DIVISION

Quality work at competitive prices in Harpenden
and the surrounding areas.

WE SPECIALISE IN ALL TYPES OF ROOFING WORK



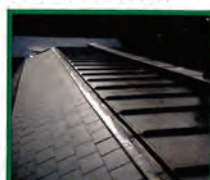
Handmade clay roof tiling



Lead work and Spanish slating



Handmade clay tiles roof in progress



Finished lead work and slating

Please telephone:
Graham Parkins for advice or a
FREE QUOTATION on **01582 840201**
www.roofingharpenden.com

**CLARIDGE
& HALL BROS LTD**
MARKYATE est 1890
01582 840201

Flex & Stretch Class



**Stretch the entire body.
Target primary muscle groups
surrounding the hips, hamstrings
& upper back including breathing
techniques.**

**Everyone welcome
No need to book – just turn up
£5 pay as you go
Tuesdays 11am till 12 noon
Edlesborough Memorial Hall**

London Luton Airport

With an increase in aircraft in the area and in particular when the wind is from the East, we are getting some aircraft flying directly over the village to join the flight path into the airport. If you are disturbed by the traffic flying over the village, there is a complaints hotline number: 01582395382. This is an airport number where you can register your concerns. It is important to do this if we are to reduce these disturbances over our village.

If you need to complain about Heathrow flight noise the number is 0800 344 844.
Email: noise_complaints@heathrow.com



Come for Coffee at St Mary's, Eaton Bray

**For a warm welcome and
a cheering cuppa
each month in
St Mary's Church
Eaton Bray
10.30am - midday**



**1st Saturday of each month
(except July - 2nd Saturday)**



A committee run playgroup set in Dagnall Village Hall for children aged 2 to school age

We operate five mornings a week from **9:15 - 12:15**



Ofsted Comments

- Staff are consistently kind and caring which supports children to develop confidence and resilience
- Teaching is consistently good and children's safety is given the highest priority
- Children learn good manners and know how to treat each other with respect



If you think your child would be happy here please phone our Playgroup Leader, Ann Tobin on 07816 358 342
www.dagnallunderfives.co.uk

La Maison Bespoke Furniture

We build to your design.

Tables & Chairs

Bedroom Furniture

Kitchens

Floorboards



Made to measure solid wood furniture

Handmade carpentry

Fitted or Freestanding

Family run business for over 30 years

Visit our Website: www.bespokefurniture18.com

Email: astonint@btinternet.com or Phone: 07791 805159

FIND OUT WHAT YOUR HOME IN DUNSTABLE IS WORTH



Use My FREE Instant Online Valuation Tool

If you're thinking of moving, start by getting a **Hometrack Valuation Report** to see how much your home is worth.

Hometrack is the UK's largest automated valuer of residential properties and is relied upon by 13 of the 15 top UK high street lenders.

This report normally costs **£19.95** and includes **ALL** recent house sales near you!

Lacey Brooks
Branch Director



Get your **FREE** online valuation report now at: **www.EweMove.com/Dunstable** or call: (24/7) **01494 292 359**



EweMove respects any existing sole agency agreement already in place with another agent.

The most thorough clean ever seen, or it's FREE



See what our customers say...

www.fivestarfurnishingscare.co.uk

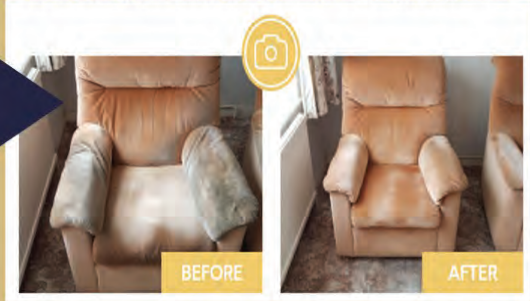


What we offer...

-  Carpet cleaning
-  Leather Cleaning
-  Upholstery cleaning
-  Rug cleaning
-  Hard floor cleaning



Five Star Furnishing Care Consultants have been established since 2001, we are a family run business with a small team of service technicians.



Call us NOW to arrange your FREE quote – **01525 611 027**

Quote ref – FOCUS19 to claim 10% off



**Stay & Play
Toddler
Group**

**Musical
Monkeys**

**Eaton Bray Village Hall
10-11.30am on Fridays**

**£4.50 for one adult and child
£1 for extra children/adults
0-6 months free**

***Holiday Home to Let
Bridport Dorset***



**Sleeps 7 - Fully equipped
Close to all amenities
Visit: www.bills-house.com
enquiries@bills-house.com
or tel. 07850 601007**

Eaton Bray W.I.

There were four new members who were welcomed to the Eaton Bray March WI meeting. Our Chairman informed us of the Spring Group Meeting on Thursday 23rd April, to be hosted by the Dunstable WI, to which we were invited.

Our speaker for the evening was Sue Mitchell, who gave a very interesting talk about Birds of Bray. Five owls and a Kestrel were perched at the top table and watched proceedings from there!! Sue explained that they had started with two birds, 25 years ago. They presently have 22 birds, but have had as many as 25. Birds of prey are meat eaters and include Falcons, Owls, Hawks, Eagles and Vultures. Caring and feeding she mentioned, was a full time job. Everyone agreed this had been an extremely fascinating talk and an enjoyable evening.

Since our meeting, with the worrying problems of the coronavirus, our Secretary has sent out the following announcement: ***Because of the Government regulations on the Coronavirus, it has been decided to cancel the WI Meeting AGM on 6th April, the Spring Group meeting on Thursday 23rd April and the WI coffee morning.***

Stay safe and look after yourselves. Regards Margaret and Deirdrea

Meetings are always on the first Monday of the month (except Bank Holiday when it is the second Monday). Meetings are held in Eaton Bray Methodist Hall. The contact for Eaton Bray WI is: Margaret Jones, on 01525 220991. A warm and friendly welcome awaits new members. At each meeting there is an interesting speaker or demonstration, followed by social time and refreshments.

Edlesborough Baptist Church

Pastor: Alister King
gbcepastor@gmail.com
07572 395687

Weekly Activities

Sunday Services

11am Morning Worship
6.00pm Evening Worship

2nd Monday

2.30pm SilverLink for over 60s

Wednesday

10am (term time) Caterpillars Toddler Group
7.30pm LIFE Groups
(ring for details and to confirm venue)

Find us on Facebook @gbce2014

The Salvation Army Booth Place



Sunday

Footprints (Sunday School) 9.45 - 10.45am
(Term time only)

Morning Worship 11am

Tuesday

Coffee Morning 10 - 11.30am
(Alternate weeks)

Wednesday

Home League 2.30 - 3.30pm
(Ladies meeting but all welcome)

Champion's Club (Term time only)
5.30-6.30pm (Ages 5 to Year 5)
6.45-7.45pm (Year 6 and above)

Thursday

Girls' Night Out
(1st Thursday of the month) 7.45pm
Ladies Fellowship
(Last Thursday of the month) 7.30pm

**For further details please contact us on
01525 222087 or email
eaton.bray@salvationarmy.org.uk**

Meet Our Newest Zoo Residents

Say hello to our red river hog family! Ava, Cameron, Pedro, Penny, Phoebe, Shane and Tommy have recently moved from ZSL Whipsnade Zoo and are settling in nicely to their new home at ZSL London Zoo.

They all have very different personalities but have one thing in common, they all love

food! Their favourite food is monkey nuts, and they even eat the shells!

Come along to the Zoo to meet our new residents, and look out for the, ripping apart their straw bales, blowing bubbles in their water trough, and snuggling up together for an afternoon nap.



The Tiger Who Came To Tree

Zookeepers snapped this striking image of four Amur tigers at ZSL Whipsnade Zoo - all practising their climbing skills at the same time to reach their breakfast.

Parents Naya and Botzman led two of their 19-month-old cubs, Czar and Dmitri, on the synchronised climb, which was caught on camera by keepers.



ZSL Whipsnade Zoo Comes to You!

ZSL Whipsnade Zoo launches brand new education outreach workshops to local primary schools



Combining curriculum with creatures, ZSL Whipsnade Zoo has launched a brand new educational outreach programme in a bid to inspire more local students to protect wildlife – be that overseas, in their own back gardens, or even in their schools.

Primary schools local to the Zoo can now book outreach visits – with students having the chance to engage with ZSL Whipsnade Zoo’s inspiring educators on the role zoos play in conserving endangered animals, climate change, plastic pollution and other key environmental topics in their own school.

Cat Hickey, Education Engagement Manager

at ZSL Whipsnade Zoo said: “At ZSL Whipsnade Zoo we know that people are more likely to act for causes they feel a connection to and are passionate about; and we want to inspire as many young people as possible to work for wildlife.

“Our sessions are aligned with the national curriculum, and with a focus on real conservation action that students can take home, we bring important environmental topics to life – using real-world examples from ZSL’s global

conservation projects, from tackling illegal wildlife trade to boosting rare dormice numbers in the UK.

Exploring a variety of fascinating topics including species’ habitats and endangered animals, KS1 students will be tasked with matching animals to their specific habitats, while KS2 sessions focus on students trying to piece together how a fake elephant tooth, a honey jar and a camera trap are all linked.

Showcasing the scale of plastic pollution, KS2 sessions will also be accompanied by a life-size replica tuna fish – helping students understand the journey a single piece of plastic can take from a supermarket shelf to the ocean.

Each session delves into important environmental topics, sparking students’ interest in STEM subjects and bringing them a closer understanding of how wildlife health and human health are so closely interlinked.

These hands-on interactive workshops are available to book Monday to Friday from the 1 September to 31 May and can be booked by emailing learning@zsl.org or visiting: www.zsl.org/WZSchoolOutreach



ZSL | WHIPSNADE ZOO

Dagnall Weather Station (AONB)



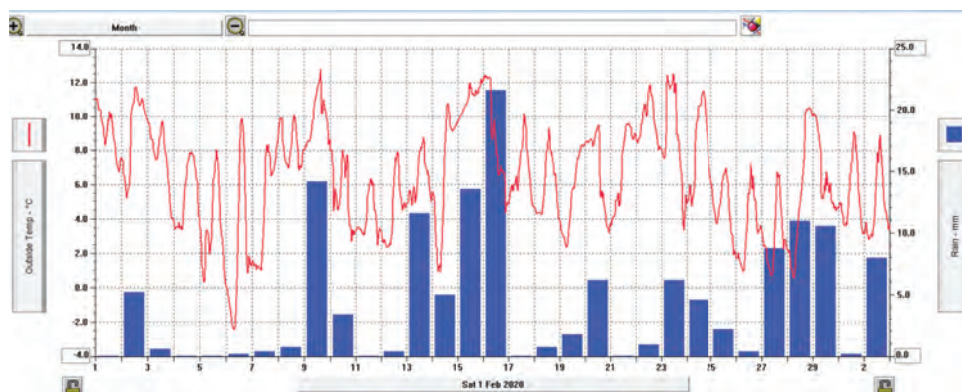
Weather Conditions for February 2020

Elevation: 450 ft - Latitude: 51° 50' 13" North - Longitude: 0° 33' 34" West

February started with showers on the 2nd and 3rd, then on the 5th high pressure moved over us and we had a few days of bright, settled weather. On the 6th, we had a cold night and the only time in the month when the temperature dropped below zero, to -2.4°C. It rained almost every day for the rest of the month. Storm Dennis brought us high winds and the wettest day on the 16th with 21.59mm. This was the story for February as a whole, which was generally wet, windy and mild. I still have no reliable data for wind direction or speed this month, but my new anemometer was delivered mid-February. After testing it for a week at a low level of 1.5 metres, it was installed on the mast at 10metres high on the 22nd and is now working fine. This means I should be able to bring you reliable figures for wind speed and direction for March. In the meantime, it was interesting to see the vast difference in the average wind speed at the two levels, as shown in the plot below.

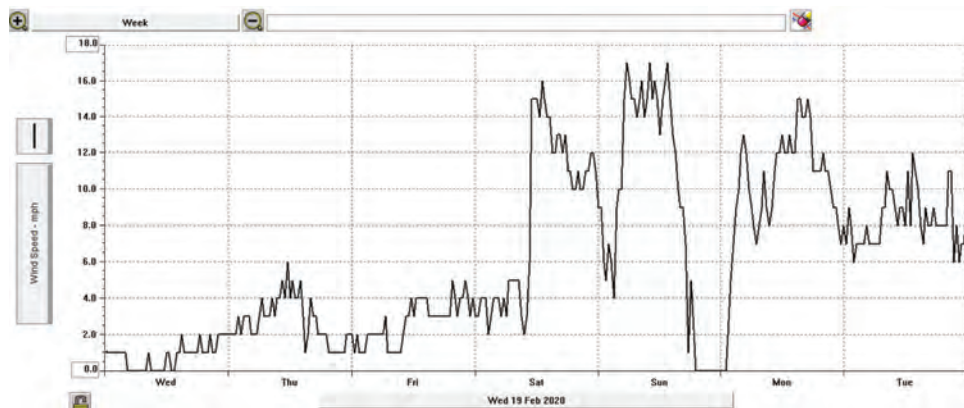
	High	Date/Time	Low	Date/Time
Temperature:	12.9°C	9 Feb 15.30	-2.4°C	6 Feb 07.00
Mean Temperature	6.6°C			
Dewpoint:	11.2°C	16 Feb 01.00	-3.2°C	6 Feb 07.00
Humidity:	96%	4 days	58%	11 Feb 15.00
Barometer:	1037.2mb	5 Feb 11.00	983.3 mb	9 Feb 18.30
Wind Speed	Corrupted data		Months avg.	Corrupted data
Wind Chill:	11.0°C	9 Feb 17.30	-3.2°C	28 Feb 06.00
Dominant Wind:	WSW			
Rainfall *T= total rain days and moisture. R= Actual rain				
*Rain Days: 23(T), 22(R)	Wettest Day 16 Feb		21.59 mm	0.850ins
Monthly Rain:	Total	February 2020	130.6 mm	5.142 ins
Yearly Rain:	Total	1 Month	215.8 mm	8.456 ins

February 2020 Another Mild and Wet Month



Dagnall Weather Station (AONB)

The difference in average wind speed at low and high levels
Anemometer install at 1.5metre Anemometer install at 10 metre



For weather data 24 hours a day, updated every 15mins, visit: www.dagnallweather.co.uk and http://bit.ly/weather_dagnall this site forecast and much more

If anyone has a question, comment or wishes to contact me please email: david@dagnallweather.co.uk or telephone: 01442 843883

Dagnall weather now has an app for your iPad & iPhone! Just go to the apple store, search for Wunderstation and follow the instructions to Dagnall Weather Station. Now updated every minute.

Eaton Bray Footpaths

An Appeal for Someone with a Camera

If you see a little redhead in the high street observing the paths with holes filled with water, uneven often cambered thus not enabling our oldest people in the village of Eaton Bray to leave their homes. I am not going mad just yet.

These paths, often overgrown, are making walking very difficult for people requiring to use walking aids and it would be impossible with the use of sticks or Zimmer Frames. I visited Councillor Philip.Spicer and explained my concern I was pleased with his reply that I had come at the right time.

He has asked me to map out the positions requiring attention and with the the description and position of an accompanying photograph.Unfortunately I have found mv camera unsuitable combined with my poor skills in photography! If anyone feels as strongly as myself about the situation and is able to accompany me while I describe the present state and you take a photograph, please contact me on 01525220938

✉ Pat Quartermaine

Vivalo means nourishing aliveness





*The Salvation Army hall
in Booth Place LU6 2DR*



An Early Day Salvation Army Solo Sung by a Very Happy Man

As I go marching down the Street,
I note that people stare,
They look at me in wonderment,
And think I'm not all there;
Because I wear the uniform
They think that I'm a flat,
As I go out the boys cry out
Why do you wear that hat?

I wear it for Jesus,
Wherever I may be:
And hope that you will wear one
Just the same as that
So come and be a soldier
And wear the Army hat.

You'd scarce believe not long ago
The clothes we used to wear
Were just fit for the rag man's bag
They'd holes in here and there

The suit was not worth twopence
And our shoes went pit-a-pat
But what a transformation since
We've worn the Army hat

I'm very glad I've joined them
For this I haven't a doubt
That I am on the laughing side
I'm clean inside and out
The crowd may shout till their throats
are sore
I'll take no heed of that
They cannot rob me of my joy
Therefore I'll wear this hat.

Do you want to feel that joy in your
life
Ask Christ Jesus to come into your life.
He is waiting.

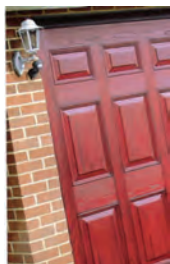


Premier Garage Doors & Gates



Quality Garage Doors

- ✓ Superb choice of designs in steel, timber and fibreglass
- ✓ Any size door made to your requirements
- ✓ Large selection of spares & fast repair service available
- ✓ New or existing doors converted to automatic
- ✓ Professionally fitted by own expert craftsmen
- ✓ Prompt free estimates & advice
- ✓ We cover all areas



(EST 1984)



Unit 7, Sparrow Hall Farm, Leighton Road, Edlesborough LU6 2ES

01525 220212

www.premiergaragedoors.co.uk



JANES FLOORING

Carpet

Vinyl

Laminate

LVT

Karndean



Need new carpets or flooring for your home?
Then let JANES FLOORING help you with the right
advice, product and colours with a perfect price,
So you've no need to go anywhere else..!



FREE ESTIMATES
BORROW SAMPLES
FULLY FITTED SERVICE
UPLIFT & DISPOSAL
MOVING OF FURNITURE

4-8 High Street Edlesborough LU6 2HS tel: 01525 220208