

FOCUS

A festive Christmas scene featuring a lit red candle, snow-covered pine branches, and red ornaments. The candle is lit, with a bright flame. The pine branches are covered in white snow, and the ornaments are red with white snow on them. The background is dark, making the red and white elements stand out.

December/January 2017

*Merry Christmas and a Happy New
Year from the Focus Team*

**The local village magazine just for Us!
Eaton Bray, Edlesborough, Northall & Dagnall
Focus is online at www.thefocusmagazine.co.uk**

The White Horse Inn At Eaton Bray

Market Square
Eaton Bray
Beds
LU6 2DG
01525 220 231
www.eatonbraypub.co.uk




**KEEP
CALM
ITS
A
BARGAIN**

Midweek fixed price lunch
Tuesday to Friday 11.30am til 2.30pm
Great traditional pub dishes
1 course £7 : 2 courses £10 : 3 courses £13.50

Keep up to date see our website at
www.eatonbraypub.co.uk

Booking a Christmas party or family get together?
The White Horse offers
excellent value for money
Call now for our seasonal
party menu and Christmas day menu



Happy New Year!
**CELEBRATE AT
THE WHITE
HORSE**

Find details of our
Christmas and
New Year opening
times on our easy
to use website

NORTHALL VILLAGE HALL needs more willing hands!

People to help with occasional projects such as decorating, tidying the grounds and one-off projects as and when they occur.

It's fun and rewarding when a band of volunteers come together to pool resources - we know as we've been doing it for many years! We are now reaching out for more people to volunteer alongside us. A little of your time once in a while will help keep the Hall - a *Village Asset* - open and running effectively for all of Northall to enjoy. If you can offer any kind of help please do get in touch; we'd love to hear from you.

Email us at: northallevents@hotmail.com
or contact **Kevin Cabbage** on 01525 220361

*Northall Village Hall
Management Committee*

NORTHALL BAPTIST CHAPEL

Chapel Lane, Northall

(just beyond the 30 speed limit signs on the road towards Leighton Buzzard)

Everyone is welcome to our Sunday worship each week between 11am and 12.30pm including tea/coffee and time to talk together.

For more information contact:

John Hazell 01525 218142

Email northallchapel@btinternet.com

There has been a Baptist Chapel in Northall for more than 200 years. Today we continue to seek to worship God, serve him in our daily lives and support and encourage one another in the difficult and the joyful times.

The Focus Magazine Committee

Editor: Sally Siddons

34 Wallace Drive, Eaton Bray 221733

Email: sallysid@hotmail.com

Assistant Editor: Liz Constable

Eaton Bray 222234

Email: lizconstable@hotmail.co.uk

Dagnall Representative: Sue Cawdell

10 Deans Meadow, Dagnall 01442 842200

Circulation Manager: John Plater

41 Church Lane, Eaton Bray 221095

Treasurer/Leaflet Enquiries: Ken Coates

10 The Nurseries, Eaton Bray 220868

Business Advertising: Sally Siddons

34 Wallace Drive, Eaton Bray 221733

Design and Layout: Tracey Moren

(Moren Associates Limited) 01525 229695

Printed by: Prioxy Press

Dunstable 01582 699851

Copy for publication to the Editor by the

10th of the month

Focus accepts no responsibility as to the accuracy or content of any advertising or articles published in 'this' magazine, neither do they reflect the opinion of members of the Committee.

© Articles published in Focus may not be reproduced without permission.

Focus would like to remind contributors that the deadline for articles is the 10th of the preceding month

N.B. There is not a January issue.

Kindly Note

If the event you wish to advertise falls in the first week of the month, it is advisable to get the details into Focus a month earlier. The magazines are not delivered from the printers until the first of the month, therefore it takes a few days for them all to be circulated throughout the village.

✍️Editor

Focus is online at www.thefocusmagazine.co.uk

Village Diary Dec/Jan 2017



Weekly

- Mon-Fri (term time) Eaton Bray Pre-school, Eaton Bray Lower School, 01525 220468
- Mon-Fri (term time) Dagnall Under 5's, Dagnall Village Hall, 9.15am - 12.15pm, Mrs Ann Tobin 07816 358342
- Mon-Fri (term time) Edlesborough Pre-School, Edlesborough School, 01525 220431
manager@edlesborough.bucks.sch.uk
- Mon-Thu (term time) Totternhoe Pre-school, mornings, Totternhoe Lower School, Michelle Urbanowicz on 01582 668841
- Mondays Pilates, 10.45am, Totternhoe Memorial Hall, Lisa: 07799 893489
- Mondays Dagnall Community Choir, All Saints Church 7.45 – 9.45pm
- Mondays (term time) Movement and exercise classes with a dance flavour, Northall Village hall 2-3.30. Contact Jan 01442 864271.
- Mondays Curtain Call Youth Theatre 5-7.30pm, Eaton Bray Village Hall, Gavyn 01525 220525
- Mondays Curtain Call Theatre Group - 7:30-10:30pm Eaton Bray Village Hall, Sheila - sdtwinkletoes@yahoo.co.uk
- Mondays KFPA ISTD Classical Ballet classes, 3+yrs, 4.15pm, Edlesbrough Memorial Hall, www.kfpa.co.uk
- Tuesdays Line Dancing, 1.30-3p.m., Eaton Bray Village Hall, Lyn Stubbs 220731
- Tuesdays Pilates, 10-11am, Eaton Bray Village Hall, Nicky Roussou 07861 162680
- Tuesdays Totternhoe Baby & Toddler Group, 9.30-11.30am, St. Giles Church Hall, Ruth Allen, 01525 222468 or 07796 265174 or email ruthallen002@gmail.com
- Tuesdays Northall Baby & Toddler Group, 9:30-11:30am, (open in the Summer School Holidays) Northall Village Hall, Stacey Richmond 01525 222999/07957 607592
- Tuesdays Tap & Ballet Classes, JoAnn Latus School of Dance, 4-8pm, Eaton Bray Village Hall, 01582 620576
- Tuesdays Circuit Training - Eaton Bray School Hall - 7:15-8:15pm - Tel: 07969 572153
- Tuesdays Coffee Morning, Bring & Buy, Table Top Sale, 10-12noon, Salvation Army Hall, Booth Place, Eaton Bray
- Fortnightly
- Wednesdays Pilates, 7.15pm, Northall Village Hall, Lisa: 07799 893489
- Wednesdays Egyptian Dance Class, 7.30-8.45pm at Eaton Bray Village Hall. Contact: Soraya on 07976 964316 for more details
- Wednesdays Northall & District Age Concern Wednesday Club, 10am - 3pm, Northall Village Hall, Contact Anna on 07854 230243
- Wednesdays Dynamic Yoga 6.30-7.30pm £5 Eaton Bray Coffee Tavern, Keira 07936 693696
- Wednesdays (term time) Caterpillars Baby and Toddler Group 10am to 11:30am, Grace Baptist Church, Moor End, Edlesborough, £1 per family unit, Frances King 01525 229 610
- Wednesdays Pilates 6.45 & 7.45pm, Dagnall Village Hall, Andrea on 07855 138005 or andrea@naturalpilates.co.uk
- Wednesdays Art of Ju Jitsu martial arts class, Eaton Bray Village Hall, 7 -7.45pm ages 6-15yrs
- Thursdays Yoga, Northall Village Hall, 11.30am-1pm 01525 377542
- Thursdays Baby & Toddler Group, Salvation Army Hall, Booth Place, Eaton Bray, 9.30-11.30am
- Thursdays Jazzercise, 9.30-10.30am, Eaton Bray Village Hall, Angela Veryard, 01525 715208
- Thursdays KFPA Street dance classes 4+yrs 4pm, Edlesborough Memorial Hall, www.kfpa.co.uk
- Thursdays Tae Kwon-do, Dagnall Village Hall, 5.45-7.30pm 07813 755785
- Thursdays Clubbercise 7.30 - 8.30pm. Eaton Bray Hall - Gina Flitton 07846421756
- Fridays Tap & Ballet Classes, JoAnn Latus School of Dance, 4-8pm, Eaton Bray Village Hall, 01582 620576
- Fridays (term time) "Little Luvvies" baby ballet classes 10am-11.30am. Contact Emma Whittemore on 01525 376124
- Fridays (term time) Kids Club 6:00pm to 7:00pm Grace Baptist Church, Moor End, Edlesborough (across from the post office) Frances King 01525 229610

Village Diary December/January 2017

- Fridays Keep Fit class, Edlesborough Mermorial Hall 10 - 11am
Fridays Stay & Play toddler group, 'Musical Monkeys' at the Eaton Bray Village Hall, 10-11.30am, £4.50 for one adult and child, £1 for extra children/adults, 0-6months free
Saturdays Jazzercise, 9.30-10.30am, Eaton Bray Village Hall, Angela Veryard, 01525 715208
Saturdays KFPA Musical Theatre classes 4+yrs www.kfpa.co.uk, 10am, Edlesborough Memorial Hall
Sundays Sundays Worship at 10:30am and 6pm Grace Baptist Church, Moor End, Edlesborough (across from the post office). Barry King 01525 229610
Last Sunday Messy Church, 3-5pm at The Salvation Army Booth Place

Monthly

- 1st Monday Eaton Bray Parish Council Meeting, 7.30pm, The Coffee Tavern (except January-2nd Monday)
1st Monday Eaton Bray W.I. Meeting, 7.30pm. Eaton Bray Methodist Church Hall. Contact Margaret Jones on 01525 220991
1st & 3rd Tuesday Dunstable & District Orbit (social and charitable) Club meet at Dunstable Rugby Club at 8pm. For details contact 01525 222441 or 01582 755147
1st Saturday St. Mary's Church, Eaton Bray Coffee Morning & Plant Sale, 10:30am - 12 noon
2nd & 4th Tuesday TOTS, St Mary's, Eaton Bray, 2pm
2nd Tuesday Dunstable & District Local History Society meeting, 7.45pm, Methodist Church Hall, Dunstable (opposite Wilkinson)
2nd Tuesday Edlesborough W.I. Meeting, 7.30 pm, Edlesborough Memorial Hall
2nd Wednesday St.Mary's Ladies Guild, 2pm, St.Mary's, Eaton Bray
2nd Wednesday Eaton Bray & Edlesborough Lions Club, 7.30pm, The Coffee Tavern
2nd Thursday CAMEO Coffee, tea & chat, 10am-12noon, Edlesborough Methodist Church
2nd Saturday Workshops Dynamic Yoga 9.30-11am £10 Eaton Bray Coffee Tavern, Keira 07936 693696
3rd Thursday Edlesborough Parish Council Meeting, 7.30pm, Memorial Hall
3rd Sunday Lunch club 11.30 to 2.00pm, Eaton Bray Village Hall, Chris Hewitt 222288
4th Tuesday The Filling Station, 7:30pm, Bellows Mill
Last Saturday Coffee Morning, 10:30-12 noon, Edlesborough Methodist Church
Last Sunday Messy Church, 3-5pm, Salvation Army, Booth Place, Eaton Bray, 07932 057490

Other Regular Events

- 9th Dec Leukaemia Research Coffee Morning with sherry and mince pies, 2 Dunstable Road, Dagnall 10.30am. All welcome.
20th Dec Dagnall Over Sixties Xmas meal, 1:30pm in the village hall followed by carols and presents (members only)

One Off/Annual/Irregular Events

- 2nd Dec Father Christmas around Dagnall village from 6:30pm, followed by him switching on the Christmas lights at the village hall
3rd Dec Eaton Bray Methodist Church Coffee Morning & craft stall, 10am -12 noon
3rd Dec Dagnall Christmas Fair, 1pm
4th Dec Dagnall Childrens' Party (Dagnall children only)
11th Dec Carol Concert, 3pm, Dagnall Village Hall
17th Dec Carols by Candlelight, 3pm, Church on the Hill, Edlesborough
18th Dec Carol Service at All Saints' Church, 3pm
24th Dec Christmas Eve Candle Service, 4:15 & 6pm, St Mary's Eaton Bray
31st Dec New Year's Eve Dinner Dance, 8pm, Beloows Mill, £55 www.bellowsmill.co.uk
14th Jan New Year Concert, 2pm, St Mary's Eaton Bray, Tickets: £7.50 (children free) Box Office: 01525 222283
28th Jan Chocolate Themed Quiz, 7:30pm, Edlesborough school, tickets:£10 per person from Emma 07811 117099

Village Notices



EDaN Community Transport
Peter Williams: 01442 842506

Village Hall Bookings

To book your local village hall for an event please contact the following:

Northall: Lorna Cabbage Tel: 07857 318696 Email: northallvhbookings@gmail.com

Eaton Bray: Norman Lee Tel: 01525 222831

Email: bookings@ebvh.co.uk Website www.ebvh.co.uk

Dagnall: Elizabeth Coates Tel: 01442 842550

Edlesborough Memorial Hall: Penny Pataky, Tel: 01525 229358

Email: manager@edlesborough-pc.gov.uk

Police Contact Numbers...

making neighbourhoods safer together

General Assistance (Recommended Number): 101 Emergency: 999

Bedfordshire Police (Eaton Bray)

Leighton Buzzard Police Station/Kathryn Horgan: 01582 473411

Typetalk: 18001 01582 473418

Email: LPT.LeightonBuzzardLinslade&Rural@bedfordshire.pnn.police.uk

Thames Valley Police (Edlesborough, Dagnall & Northall)

PCSO Jackie Dodson Mobile: 07800 703 524

Email: NHPT@thamesvalley.pnn.police.uk



EATON BRAY PARISH COUNCIL



Please come and help to run your village
BECOME A PARISH COUNCILLOR



The Parish Council is nine members of the public

We come to each Parish Council Meeting in the Coffee Tavern on the 1st Monday of each month and spend on average around six hours each month advising and helping to run our village.

At present we have TWO vacancies – will YOU come and join us?

If yes, please contact the Parish Clerk – contact details below.

You can also view our website for more details



Heidi Head, Parish Clerk & RFO

Email: clerk@ebpc.co.uk - Telephone/Fax: 01525 221464 - Website: www.ebpc.co.uk

Office Hours: Tuesday/Thursday/Friday 09:30-13:30hrs [messages can be left on answerphone]



“We Have a Problem....”

Northall Village Hall Management Committee has a problem. (Oh no!! I can hear you thinking, Lorna’s got another bee in her bonnet. . .) Actually this is a problem which is not specific to Northall but is shared by most community organisations up and down the country.

How can I put this politely? The movers and shakers in our communities and villages are all getting older. This is not in itself a problem, (I’m honour bound to say that!) as we of retirement age are the ones with the time and the enthusiasm to take on all the voluntary jobs that need doing to keep the villages going. We are there (some of us despite STILL working part time or minding the grandchildren) to help run the clubs and societies, pick up litter, plant bulbs, make cakes, wield tea towels, drive people to hospital, and generally be there when help is needed.

So what is the problem? Well I hate saying this, but as we are getting older, the younger generation are not there understudying us to take our places as we did when we were younger. Some of us have been doing our voluntary stuff for years, since our children were at home and afterwards when they grew up and we went back to work we just carried on. It would appear that nowadays the younger element in our communities don’t have the time to help out with voluntary stuff. They are all working during the day and are too busy or tired in the evenings and at weekends. But they still want their children to go to Scouts/play football/go to drama group and have their parties in our Village Halls. So we have no one who is prepared to take over from the older generation who are doing most of it at the moment. And what will happen when we oldies eventually fall off our perches?? The clubs and societies will fold with no one to run them, no Scouts and the Village Halls will have to close – no party venues – you’ll have to have parties at home. . .

Just looking at November’s edition of Focus, I see that Eaton Bray are looking for Parish Councillors, help is needed with Speedwatch (both Eaton Bray and Edlesborough), Eaton Bray needs help with their Neighbourhood Plan and the Salvation Army is looking for players to form a band, not to mention the many cakes and crafts and customers required by all the fund raising activities during the run up to Christmas

In **Northall** we have canvassed the village with flyers and advertised in Focus asking for help with our Village Hall Management Committee. Not as exciting as helping out with football teams perhaps, but still necessary to keep the Hall going. What does it involve? Not a great deal. Three meetings a year plus an AGM and a Village Fun Day every other year. We’ve already done most of the renovations and plans for the extended kitchen are well under way. But the main “posts” on the Committee need understudies to help from time to time with a view to taking over the Committee as older members retire. And I am sure that this is the case for many of the local organisations. It may mean changes to the way things are done. Moving into the 21st century technologically needs help from the generation who have grown up with technology and use it and understand it without a thought.

So how about it? Can **YOU** spare some time to give us a hand? Are you perhaps newly retired or at home and looking for something rewarding to fill up an hour or two? It isn’t difficult and we **really need you** to help. And it’s fun as well as rewarding. There is tremendous satisfaction in doing something which really makes you part of the local community. You get to meet all sorts of people and get to know what is going on – and have a say in what is going on too, instead of moaning that “they” aren’t doing things. As I have said in previous articles “they” are “us”!!

Come on! Surprise me! If you think you could give us a hand at Northall Village Hall contact me on 01525 220361 or e-mail me at lornacabbage@btinternet.com.

THANKS FOR READING THIS!!

✍️ Lorna Cabbage.



Eaton Bray with Edlesborough

Parish News

Church Warden & Pastoral Matters: (01525 220527)

Reader: Gordon Gray (01525 220136)

Website: www.stmaryseatonbray.org.uk

Facebook: St Mary's Eaton Bray

This edition of Focus addresses the months of December and January, the two coldest and darkest months of the year. Historically these have been months to be feared by people living in this country; months when the cold could be bitterly cold, when ice froze not just on the windows but on the bedspread. It was only in the 1960s with the introduction of central heating that families no longer needed to huddle around the open fire keeping their fronts warm while their backs shivered from the cold draughts that blew around the house.

I suspect that, today, some families in this country hardly notice winter; snug in their cosy draught-proofed houses with heating and hot water on tap even a journey to the supermarket is facilitated by de-icing and air-conditioning units. For some it can be hard to recognise the extremes of the season. But I'm sure many older readers remember what it felt like to be cold, dark and, yes, hungry and how they looked forward with hope and expectation to spring and the joy of warmer, lighter days and more food to eat.

Hope, expectation and joyfulness – those are the characteristics that mark the Christian celebration of Advent and Christmas. Advent – the four weeks before Christmas - is a time when the church meditates on the state of the world with its darkness and violence, at the coldness which people can show one another, and considers its hopes for the future of the human race, hungry for a better way for ourselves and for future generations.

How can we bring an end to the ever more sophisticated ways we have of killing one another, wars over resources, mass starvation, poor healthcare of most of the world's inhabitants, the greed of the wealthy, fear of strangers, pollution, climate change? An end to injustice has been the great hope of people from time immemorial – the world groans for such a change - for someone who will show us how to bring about change. Surely, it's too much to hope for, too much to expect.

But the Christian message is that in the birth of Jesus, at Christmas, God does change things. That is exciting, that is Good News, and it is why so many of our Advent and Christmas carols are filled with joy: 'Hark the glad sound!' 'Rejoice, rejoice, Emmanuel shall come', 'A great and mighty wonder', 'Hark! The herald angels sing glory to the new-born King', 'Joy to the world, the Lord is come'.

Born a little baby, Jesus came and showed a different way, a way based on love, peace and justice for all people; and if the world is not to spiral into more and more despair perhaps His way is the one to try. It's not easy; I quoted G K Chesterton last month, well, here he is again "The Christian ideal has not been tried and found wanting; it has been found difficult, and left untried".

Christmas brings Good News, a message of joy for the world; but maybe you have missed it, maybe you have failed to be excited. Perhaps, like our experience of the

seasons we are too comfortable, too distracted by modern commercial Christmases, to see the excitement that the message of Jesus brings to many millions of people throughout the world. Come along to church this Christmas and be awakened to the joy.

I look forward to seeing many families from our villages over Christmas at our Carol Services, our Candle Services (come early for the 4.15pm Service), at Midnight Mass and on Christmas Day. Details of all our services are on the Christmas Card delivered with Focus. Whichever service you come to you will receive a warm welcome and I hope that you will experience the joy of the Christian message.

✉ Gordon, Reader at St Mary's Eaton Bray with Edlesborough

300 more Houses in Eaton Bray!!!

Central Beds Council will publish the draft version of their Local Plan in December 2016.. This will set out the additional development, in 3 categories (residential, employment and traveller sites), that they are looking to implement by 2030.

Landowners in Eaton Bray have submitted a greater acreage of sites than all the other villages in the near vicinity combined. Eaton Bray Parish Council have been advised by CBC that they expect 150-300 more houses to be built in Eaton Bray.

Given that there are currently just under 1200 dwellings in the village, 300 more would be an increase of 25%. All the proposed sites lie in the area from Bower Lane to The Rye inclusive.

Residents need to consider the impact on:

- Roads and traffic
- Foul and surface water drainage
- Capacity for additional electricity and gas supply, water supply, telephone and broadband connections.
- School places and GP services
- The consequent effect of all the above on property values

Anyone who objects to these proposals should:

- Lobby their CBC Ward Councillor, Ken Janes (01582-601317)
- Lobby EB Parish Council
- Attend a CBC meeting on 26 January 2017 2.30 to 7.30pm, venue to be advised.

ID	Site Address	Site Size (hectares)
ALP072	Land to the rear of Great Green Farm, The Rye, Eaton Bray	5.7079
ALP103	Land to the rear of Bower Lane, Eaton Bray	8.0744
ALP192	Land adjacent to 25-57 Bower Lane, Eaton Bray	0.573
ALP423	Land east of Northall Road, Eaton Bray	15.8583
ALP464	Westrope Brothers, 17 The Rye, Eaton Bray	1.0251
ALP478	Doolittle Meadow Farm, Harling Road, Eaton Bray	8.3729
NLP013	Park Lane, Eaton Bray	1.4189
NLP204	Land at Northall Rd, Eaton Bray LU6 2BQ	20.29
NLP250	Bower Lane, /Dunstable Road Eaton Bray LU6 1RB	2.15
NLP300	Land south of Bower Lane, Eaton Bray LU6 1RB	9.8302
NLP316	Land adjacent to The Meads, Eaton Bray LU6 2DS	12.1926
NLP483	Land off Eaton Park, Eaton Bray	2.691



EATON BRAY PARISH COUNCIL



HIGHLIGHTS OF THE MINUTES

A full/detailed copy of the minutes for Eaton Bray Parish Council can be found on our website.

A hard copy of the minutes can also be viewed on the Parish Council's notice board at The Coffee Tavern.

Meeting of Eaton Bray Parish Council held on

Monday 3rd October 2016 from 7:30pm at The Coffee Tavern

Central Beds Council (CBC) – Councillor Ken Janes

Website: www.centralbedfordshire.gov.uk - Customer Services: 0300 300 8302 -

Email: customers@centralbedfordshire.gov.uk

Bedfordshire Police

Your Local Policing Team: Non-emergency call **101** / All emergencies **999**

Vacancy - Parish Councillor

There are vacancies for a Parish Councillors on Eaton Bray Parish Council. If you are interested in joining the council please email the Parish Clerk or visit our website for more details

Tree Planting

Central Bedfordshire Council will be planting trees in the parish. The locations for these trees are: Medley Close, Knights Close and Greenways. Other areas have been considered, i.e. Wallace Drive/The Orchards, however there are underground services in these areas which would make them unsuitable; additional scans will be carried out on these locations to double check suitability. The proposed trees will be a small blossom variety, with planting due to be carried out during the Autumn.

Remembrance Service 2016

The Remembrance Service was on Sunday 13th November, 10:50am at Eaton Bray War Memorial. The Bishop of Bedford came to the parish to conduct the service in church that day and the Act of Remembrance at the War Memorial.

Parish Council Meeting Date: Held in The Coffee Tavern (1st floor)

Monday 5th December 2016 from 7:30pm

Parish Council Website: www.ebpc.co.uk



Heidi Head, Parish Clerk & RFO

Email: clerk@ebpc.co.uk - Telephone/Fax: 01525 221464 - Website: www.ebpc.co.uk

Office Hours: Tuesday/Thursday/Friday 09:30-13:30hrs [messages can be left on answerphone]

Follow Eaton Bray Parish Council on Facebook and Twitter

Keep up to date with what is going on in the parish



Dunstable and District Orbit held a quiz night on the 14th October at Billington Village Hall. 8 teams took part and we raised £700. The money will be added to throughout the Orbit year, then it will be divided between 3 charities, Diabetics U.K., Tower Lifeboat Station and for a local boy from Leighton Buzzard who has lost limbs through a rare form of meningitis and needs a special wheelchair.

Orbit meets every 1st and 3rd Tuesday at Dunstable Rugby Club at 8pm. For more details visit our website , www.orbitclub.org.uk/dunstable or phone 01525222441. You will receive a warm welcome.

✉ Jill Richards (Publicity Team)



UNICORN WINDOWS LTD

“WHERE QUALITY & SERVICE ARE NOT A MYTH”

www.unicornwindows.co.uk

Tel: 01525 854272



Unit 3 Youngs Industrial Estate, Stanbridge Road, Leighton Buzzard

comput@mation

computer support & services

Computer Support for Business & Home

Problem Solving:

Virus & Spyware Removal
Internet & Email Assistance
Fault Diagnostics
Repairs & Upgrades
Slow Running PC's

Sales:

Desktops, Laptops & Tablets
Printers & Peripherals
Software

Services:

PC, Mac & Linux Support
Wired & Wireless Networks
Data Recovery
Install & Set-up
Health Checks

On-site Visits:
Office Hours & Evenings
by appointment

For friendly advice call John Wallace: 07968 536068 or 01525 261381
Email: john@computamtion.co.uk
Web: www.computamtion.co.uk

Computamtion Services Ltd - Est.1999 with over 25 years experience
9a Lower Way, Great Brickhill, Buckinghamshire, MK17 9AG

Carpet & Upholstery Cleaning

Professional & Local

All work guaranteed - not happy, don't pay

Powerful equipment means drier much quicker than other methods

100% Guaranteed no chemicals left in carpet when dry therefore will not easily resoil & perfectly safe for children & pets

Recommendations account for 90% of my work

Absolutely no hard sell

Telephone Colin for a Free Quote

DEEP-CLEAN

01525 851 811

www.deep-cleaners.co.uk

Email: colin@deep-cleaners.co.uk

EDLESBOROUGH SURGERY

11 Cow Lane Edlesborough

Enquiries - 01525 221630 Appointments - 01525 220333

www.edlesboroughsurgery.co.uk

**Dr J R Bell, Dr Heather White, Dr Stephanie Johnston
Dr Kirsten Riemer, Dr Charlotte Fisher**

Friendly village Practice offering a wide range of health services including coils/implants, minor surgery, travel advice, in house blood tests, on-line appointments and repeat prescription ordering. Nurse Practitioners offering acute clinics with same day appointments. Also, Midwife, Health Visitors in attendance. Local District Nurse service.

Long established training Practice with a rotation of qualified doctors.

EDLESBOROUGH PHARMACY

01525 223181

Pharmacist – Mitul Patel

Friendly reliable professional service at the pharmacy and well established delivery service to the villages. Professional advice always available.

All doctors/dentists/veterinary and hospital prescriptions dispensed.

Herbal/Homeopathic products available. In addition – Disability Aids, e.g. wheelchairs, walking frames, incontinence aids, Ostomy products, Malaria prophylaxis, Erectile dysfunction, Salbutamol supply without prescription. Flu vaccination available.



For all your painting & decorating requirements
 Domestic and Commercial
 call Max for a free estimate with no obligation
maxbro@btinternet.com



City & Guilds
 Qualified

- **Plumbing** - Showers, Toilets problems, Baths, Outside Taps, Drips & Leaks, Radiators, Tiling
- Specialising in Full or Partial Bathrooms Installations (References available on request)

Call Mark for a FREE no obligation quote **01525 220994**
 All work fully insured and guaranteed. **07842 653832**

30 Years Experience
Domestic & Commercial Security



Burglar Alarms
Redcare Monitored Systems
Intercoms
CCTV
Access Systems
Locks



CERTIFICATE NO. NAC/G/2113

Quality Installations – Competitive Prices
Insurance Approved **Free Surveys**

AAA SECURITY

01525 378222

Email: sales@aaasecurity.co.uk

www.aaasecurity.co.uk





Local family run business - Not a franchise

All chemicals used are Eco-friendly, non-toxic, non caustic and non allergenic
All work guaranteed and fully insured

All products are Child, Pet and Pregnant Safe

- Ovens & Hobs
- Extractor Hoods
- Microwave Ovens
- Agas
- Fridges
- Carpets
- Rugs
- Upholstery
- BBQs
- Freezers



☎ 01525 22 19 22 or 0800 122 3393

🌐 www.ecotechovenandcarpetcleaning.co.uk @ info@ecotechovencleaning.co.uk

Dominic Woolcott

Painter & Decorator



- Internal & External
- Plastering & Coving
- Insurance Work
- 20 Years Experience
- Competitive Rates

**For a professional job call:
01525 229682 or 07747 042879**

P. DYER ELECTRICAL

For all your Electrical & Testing & Inspection needs

- Re-wires
- Testing & Inspection
- Security Systems/Lighting
- LED & Low Energy Lighting
- Decorative Lighting
- PAT Testing
- Fuse Boards
- Fault Finding/Repairs

Fully insured, Part P registered, all work guaranteed.
Fast, friendly, reliable, local electrician. For a free,
no-obligation estimate, call Paul on:



Tel: 01525 222109
Mobile: 07850 682815



David John Harris
Green Fingers
(Established 1992)

All Fencing Work • All Gates • Paving • Patios
Driveways • Shingle • Hedge Setting and Cutting
Grass Cutting • Turfing Specialist • Exterior
Painting Service • Sheds Small Building Work
Trees & Shrubs Supplied

Tel/Fax: 01525 221745
Mobile: 07889 143713

Barry Cato
Motor Repairs
Est. 1981

Serviceing, repairs and MOT's arranged

Workshop at:
r/o Norfolk House Farm, Harling Road
Eaton Bray, Dunstable, Beds, LU6 1QY

Tel: 01525 221681 (workshop)
07836 650015 (mobile)

GYM & TONIC

WANT TO GET FIT, HAVE A HEALTHIER LIFESTYLE & IMPROVE THE WAY YOU LOOK & FEEL?

The following can be provided in our Gym in Edlesborough or in your home

* **A Health & Fitness Consultation** *
* **Personal Training** * **Massage** *

Ruth Anderson Dip. PT & ST, Member of: Inst of Sports Therapists & Register of Nutritional Therapists

Tel:01525 223074 Mob:07812 163979

D NICHOLSON
PLUMBING REPAIRS
and **INSTALLATIONS**
NO JOB TOO SMALL

• Emergencies • Free Estimates
• No call out charges

Dave Nicholson

MOBILE: 07976 975604
HOME: 01525 872335

City & Guilds Qualified

For all your building needs look no further



BRIGGS

BUILDING & CARPENTRY SERVICES

Established 1981



For a professional, friendly service call:

(01525) 221767

(07970) 214439

Domestic & Commercial

Extensions
Renovations
Conversions
Alterations

New Builds
Roof Repairs
Kitchens
Bathrooms

Patios
Driveways
Decking
Garden Walls

Mini Digger, Skip Loader and Dumper Hire

All Work Guaranteed

Free Estimates



Flicks & Bangs

HAIR SALON

A warm, friendly salon offering a wide range of bespoke hair services for all the family. Feel free to pop in for a complimentary consultation.

www.flicksandbangs.com

Flicks & Bangs

66 High Street
Eaton Bray
Nr. Dunstable
Beds LU6 2DP

01525 221252



Opening Hours

Mon Closed
Tue 9 am - 5 pm
Wed 9 am - 5 pm
Thu 9 am - 8 pm
Fri 9 am - 7 pm
Sat 8 am - 4 pm
Sun Closed

pinstripes signs
pinstripes graphics
pinstripes clothing

01525 220485
07973 167779



BUSINESS CARDS

www.pinstripessigns.co.uk
find us on facebook
 pinstripes signs graphics clothing

WASHING MACHINE REPAIRS

ALSO
 DISHWASHERS, TUMBLE DRIERS,
 AND ELECTRIC COOKERS



Call
ANDERSON D.R.S.

01582 665764

www.andersondrs.co.uk
 SALES AND RENTALS AVAILABLE

 **Lee Hutt**
 Heating & Plumbing Services

Bathrooms, Design & Installation

Tiling ♦ Heating ♦ Powerflushing ♦ Taps ♦ Leaks

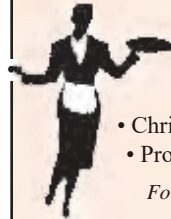
Call Outs ♦ Free Estimates Given



01525 222145



07971 559185



Patricia's Cuisine

Catering For All Occasions

- Buffets, Dinners •
- Christenings, Weddings, Funerals •
- Promotions & Business Lunches •

For Enquiries & Menu

Meadside Farm, 104 High Street,
 Eaton Bray, Bedfordshire, LU6 2DP

Telephone: 01525 222174

P.J.BRINKLOW

Electrical Contractor

01525 220469

07860 781330

**43 Pebblemoor
 Edlesborough**

'A wonderful place to be'



Eaton Bray Academy



T. 01525 220468

E. admin@eba.ec

www.eatonbrayacademy.co.uk

smartAUTOGROUP

ESTABLISHED LOCALLY FOR 14 YEARS

Fully equipped Car Bodyshop, Service Workshop
& MOT Bay



- New MOT Bay
- 4 Wheel Alignment & Tyre Fitting
- Specialists in Complete Classic Car Restoration
- Dealer Trained Technicians
- Ford, Vauxhall, VW, Audi
- Extensive Experience in Prestige Car Paintwork and Repair
- One-Stop-Shop for all your Servicing, Repairs, Bodywork & Maintenance
- Accident & Vandalism Damage
- All Insurance Work Undertaken - We can also cover your Excess and provide a Courtesy Vehicle (subject to T's & C's)
- Mobile Car Body Repairs – Fully Equipped Vans that come to your Home or Office.
- Alloy Wheels – Dents - Bumpers – Chips – Scratches - Scuffs
- Free Collection and Delivery, Loan Cars and Lifts when required

We pride ourselves on always being competitive for the right job.

**£10 OFF WITH
THIS ADVERT**



Call us on **01582 664772** or visit **www.smartautogroup.co.uk**

Units 17 & 18a, Icknield Way Farm, Tring Road, Eaton Bray, Dunstable LU6 2JX

Eaton Bray
Good Neighbours



Helpline: 07930987064

**Manned phone hours: 9am to 5pm, Monday to Friday
(An answering service is available for out-of-hours calls)**

**Call us if you want help with getting to the surgery/hospital,
collecting prescriptions, minor errands, form-filling, letter-
writing, small d-i-y jobs, walking your pet or other small needs.**

theWI
INSPIRING WOMEN

Eaton Bray W.I.

The November meeting of the Eaton Bray WI was well attended.

We were looking forward to our speaker for the evening as it was an unusual topic; Poison as a Medicine. This proved to be a very interesting subject. Graham Harrison was suitably attired in tweed suit and he donned a bowler hat, explaining that in the nineteenth century little regulations were given to medicine. Cocaine, Opium, Morphine, Arsenic and Heroin were all used medicinally. There was much advertising for products to relieve many ailments. As doctors were very expensive this was an adequate and easy way for anyone to obtain medication. Collis Brown and Epsom Salts are two items which are still used today.

Following this very interesting subject, tea was served and notices read.

A member of Eaton Bray WI would be laying a wreath on Remembrance Sunday at the Memorial.

A Birthday Dinner will be held on Thursday 17th November at 7.30 pm when all members of Eaton Bray WI are invited. This has been subsidised by our summer afternoon tea and

coffee morning.

The Group Christmas evening will be held on Friday 9 December in Caddington. It will be a traditional Christmas evening this year, Eaton Bray WI will arrange a Bring and Buy stall for the evening.

Members signed their names on a tablecloth to be embroidered to celebrate our 95th Birthday.

The next meeting of the Eaton Bray WI will be our Christmas gathering on Monday 5th December at 7.30, when a special raffle and scrumptious food will be served. Member were asked to bring their cards for members for the Post Box.

Meetings are always the first Monday of the month (except Bank Holiday when it is the second Monday), commencing at 7.30 pm in Eaton Bray Methodist Hall.

The contact for Eaton Bray WI is: Margaret Jones, on 01525 220991. A warm and friendly welcome awaits new members. At each meeting there is an interesting speaker or demonstration, followed by social time and refreshments.

Services at St Mary's Church

SUNDAYS : 8.00am HOLY COMMUNION
10.00am PARISH SUNG HOLY COMMUNION

On Third Sunday of each month:

10.00am – WORSHIP FOR EVERYONE a shorter, less formal service for families. (For anyone wishing to attend a service where Holy Communion is offered, there is a Family Communion at 10.30am at All Saints' Church, Dagnall, where visitors are assured of a warm welcome).

WEEK-DAYS:

Tuesday: 2.00pm TOTS (Tots on Tuesdays) (2nd & 4th Tuesdays)

Wednesday: 10.00am Holy Communion

EVERYONE WELCOME AT THESE SERVICES

WHAT A LOAD OF RUBBISH!

I lose track of the days in retirement's bliss,
No more appointments or meetings to miss.
A mark in the diary just signifies
The doctor, the dentist or

A TEST FOR THE EYES!

This timelessness has just a single exception,
The terror of the regular bin collection!
Which day this week? I've lost all track
And what colour to choose?

Brown, green or black?

I remember the days when the bin was a can
Collected from the yard by the dustbin man.
No timing or schedule, it just didn't matter
Never a rush - and time for a natter.
Off went the rubbish to be tipped in the cart,
Then back came your bin for a fresh start.
No need for sorting, no test to pass:
Should it be plastic, or should it be glass?

But now it's important to plan ahead
As the bins are collected when all are abed.
Best put it out the day before
But never too early - it's 'gainst the law.
Best let the neighbours make the first move
To be sure, absolutely, in practice, that you've
Got the right day and the colour selection
For the appropriate rubbish collection.
The men are on bonus and move like athletes
To meet their objectives in all of the streets.
No-one is missed - no 'ifs' or 'buts',
Providing you're sure that the rotten lid shuts...
Hats off to the rubbish disposal team
Who shift all the waste and keep the Town
clean.
Well done you chaps, we are all in your debt.
Now what colour this week?

Oh dear, I forget...

*You only have one life. How are you going to spend it?
Regretting? Dieting? Crying?
Questioning? Hating yourself?
Running after people who don't care about you?
You have one life. Spend it well, go out and live.
Make yourself proud.*

Edlesborough Parish Council wishes all Parishioners a



Streetlights

Please report failed streetlights in Edlesborough, Dagnall and Northall to the Clerk for repair. When making a report please ensure you are as specific as possible about the location.



Edlesborough Green Roundabout

At the time of writing this report the roundabout on Edlesborough Green is still currently out of use. EPC are currently investigating giving the unit a major overhaul. Following the results of this investigation a decision regarding removal, replacement or repair will be made at the December EPC meeting. EPC understands that many children are disappointed that the unit is still unusable however this is due to health and safety implications.



Edlesborough Green Play Area Gate

The main gate to the play area is currently removed and will remain so until EPC are satisfied it meets all the relevant safety requirements. EPC asks that all dog owners continue to ensure that their dogs do not enter the play area.

Neighbourhood Plan

EPC and the Neighbourhood Plan team are working hard and plan to launch the Pre-Sub Neighbourhood Plan in early December. Please see a separate article in this edition of Focus for more information.



Following the launch there will be at least a six week consultation process on this plan. Responses will be analysed and changes may be made to the plan. EPC will then submit the Neighbourhood Plan to AVDC for approval. If AVDC approve it an independent Government Inspector has to approve it.

Finally, the plan will be put to all parish residents on the Electoral Register to vote Yes or No. A simple majority of those who vote is needed.

We have to have a plan that allows for the building of the minimum number of dwellings required by the Aylesbury Vale Local Plan. This should then give us protection from additional opportunistic developments until the next planning cycle in 2033. If we fail to get an approved plan for our parish then AVDC and the developers will decide what, when and where to build for the next 15+ years.

White Lines & Road Markings

EPC continue to press TfB for the promised repainting of the road markings and replacement of the cats eyes at the junctions of Ivinghoe Way, Pebblemoor and the Leighton Road (A4146). If you notice any other road markings in need of repainting please report those to Bucks CC.

New Website

EPC have been working hard to create a new, user friendly and contemporary website. It is anticipated that this new look site will be launched in time for the publication of the Edlesborough Parish Neighbourhood Plan Pre Submission report referenced above. The website can be accessed at www.edlesborough-pc.gov.uk

Christmas in the Parish

At the time of writing this report the EDaN Beautification Team are organising Christmas lights for the new Christmas Tree on Edlesborough Green and are planning to dress Edlesborough Memorial Hall in Christmas lights.

Paulette Taylor an Edlesborough resident has worked hard to organise and secure sponsorship for Christmas Wreaths to line the High Street in Edlesborough.

Cllr Mrs Owen is organising the hanging of Christmas Wreaths for Dagnall and a new Christmas Tree will be planted outside Dagnall Village Hall in memory of Kathy Bovington.

A Christmas Tree will also be planted in Northall near the village sign.

It is hoped that both the Dagnall and Northall Christmas Trees will be planted in time for Christmas.

Bucks CC Devolution

As reported earlier in the year Bucks CC have devolved many tasks within the parish to EPC. These tasks include grass and hedge cutting, siding out, maintenance of identified public footpaths (Rights of Way), weed killing and maintenance of street furniture, street signs, etc. within the 30mph limit.

EPC are currently putting together a list of pavements requiring 'siding out' (clearing back weeds to widen the path) for our contractor to clear/tidy. Pavements inside the 30mph limit are currently the responsibility of EPC. Other pavements are the responsibility of Bucks CC. EPC agreed that as Bucks CC will not carry out this work and that, at this time, our budget allows for us to complete this work we will consider problem areas outside the 30mph limit. Please report any pavements requiring siding out to the Clerk.

Fly Posters

Our villages have recently been subject to an influx of fly posters. EPC will endeavour to remove as many of these as possible however it would be greatly appreciated if residents help to remove posters near their properties themselves. Please only remove posters if it is safe to do so.

Allotments

Edlesborough Parish Council currently has vacant allotments. Anyone wishing to take on an allotment should contact the Clerk. Fees are £2 per pole and plots range in size from 5 – 20 poles.



Speedwatch

The EDaN Traffic Management team are looking for volunteers to help with their new Sentinel device. If you have an interest in slowing down traffic in the villages or are concerned about Road Safety, please contact Louise Turner on 01442 843123 or by email at louisefanthorpe@yahoo.co.uk



Bucks CC Budget Consultation

Buckinghamshire County Council launched its budget consultation for 2017/18 on Monday 7 November.

They would like as many people as possible to take part in this consultation as the results will feed into their budget setting process in the new year and will help them to decide on their spending priorities for next year.

This year's consultation is very quick and easy to complete and Bucks CC asks for local residents and communities to take part. Simply go to our website and click on the Take Part button: www.buckscc.gov.uk/budget

The survey will run until Sunday 8 January.

Please note there is only one over-arching consultation this year unlike previous years where they have created separate ones for residents and businesses.

Those who don't have internet access can still take part by visiting their local library and making use of the free computer access there.

If you have any queries or problems please get in touch with Ann-Marie Poulton via email (ampoulton@buckscc.gov.uk) or phone (01296 383593).

Active Bucks

Active Bucks is a weekly programme of fun and inspiring activities taking place across Buckinghamshire; on days, evenings and weekends. It will continue throughout the year and new activities will be added regularly.



The Active Bucks project aspires to help all Bucks residents lead happier, healthier lives. Too many of us are not doing enough physical activity to benefit our health. This means we're missing out on all the other benefits being active can bring, such as reducing our risk of disease and disability, becoming more independent, connecting with other local people, our communities, and improving our mental wellbeing.

The Active Bucks project will support more people to get more active, more often; with a particular focus on reducing the number of inactive people across the county.

Most importantly, you don't need to take up a sport or join a gym; any activity which makes you breathe faster and feel warmer, even gardening and housework, make a great contribution to your daily activity levels.

More information can be found at www.activebucks.co.uk

Modernising Local Government

Both the District Council and Bucks County Council have produced reports on modernising local government in Buckinghamshire.

The reports focus on finding how best to strengthen local decision making, improve and protect the future of local services, save taxpayers' money and keep our customers at the centre of everything they do.

The reports and summary documents can be found at

<http://www.aylesburyvaledc.gov.uk/mlg> and <http://www.futurebucks.co.uk>

Report It

Have an issue, complaint or feedback? Not sure where to report it. This handy guide will help.

<p><u>Edlesborough Parish Council</u> clerk@edlesborough-pc.gov.uk 01525 229358 www.facebook.com/EDANParishCouncil</p> <ul style="list-style-type: none">• Streetlights in Edlesborough, Dagnall & Northall• Edlesborough Cemetery• Edlesborough Green• Edlesborough Green Play Area• Grass cutting within the 30mph limit• Allotments	<p><u>Bucks County Council</u> http://www.buckscc.gov.uk/about-your-council/do-it-online/report-it/ 01296 395000/0845 3708090</p> <ul style="list-style-type: none">• Potholes• Pavement problems/defects• Other highway issues such as road markings, road surface, bollards, etc.• Grass cutting outside the 30mph limit• Rights of Way
<p><u>AVDC</u> https://www.aylesburyvaledc.gov.uk/ 01296 585858</p> <ul style="list-style-type: none">• Missed bin collection• Fly tipping• Street names• Planning: applications, breaches, issues• Anti-social behaviour• Dog fouling or dog bin emptying• Safe Guarding Children• Dead Animals on the road side	<p><u>Thames Valley Police</u> Emergency – 999 Non-emergency – 101 http://www.thamesvalley.police.uk/contactus.htm Edlesborough, Dagnall and Northall are covered by Thames Valley Police should you need to contact the police please ensure you ask for TVP.</p> <ul style="list-style-type: none">• Crime• Vandalism• Road safety including parking issues• Missing person

Edlesborough Parish Council Meetings

The next Edlesborough Parish Council Meetings will take place as follows:

Edlesborough Memorial Hall, Thursday 15th December 2016

Edlesborough Memorial Hall, Thursday 19th January 2017

Edlesborough Memorial Hall, Thursday 16th February 2017

The meetings will commence at 7:30pm.

All Parishioners are welcome to attend all Ordinary Parish Council meetings and may ask questions, raise issues and give suggestions during the Open Forum before the formal start of the meeting. The full minutes of the Parish Council meetings are normally available to view on the website or from the Parish Clerk.

Edlesborough Parish Council Contact Information:

Clerk: Miss Penny Pataky *Office hours Mon – Fri 10.30am – 2.30pm (Excl. Wed)*

Email: clerk@edlesborough-pc.gov.uk 01525 229358 Website: www.edlesborough-pc.gov.uk

Facebook: www.facebook.com/EDANParishCouncil

FOR SALE

Antique Pine office desk. Large and small draws, hideaway key board shelf. Size 1m 4ft 6in long x 2ft depth x 2ft 6in high. Cost new £295. Selling for **£65**.

Antique Pine Book shelf or can be used in an office. 3 smaller shelves which you can move up for down for books and one for larger books or lever arch files plus a bottom draw for storage. 6ft 6in high x 3ft 10in wide x 10in depth. Cost new £335. Selling for **£70** Good condition. Feel free to view and we can email a photo.

Tel: 07734 111654



It's that time of the year again (Oh, yes it is)! and once again the Curtain Call Theatre Group will be showcasing their big family pantomime at the village hall, Eaton Bray.



The Jan 2017 panto is 'Aladdin...!' With a great script, dazzling costumes, impressive set, plenty of laughs...

and a wonderful cast of local faces, this is set to be an amazing show to suit all ages! This years script has been written by village local and funny man Gavyn Lugsden, who also Directs the show and appears as Widow Twanky! Gavyn said 'with a much richer budget than previous years, this is going to be an unmissable performance. Not only does the pantomime include all the ingredients you'd expect, there are also some added extras, including an amazing flying carpet scene, an hilarious laundry slap-stick routine and some new visual effects'.

The cast also comprises of the children of the Curtain Call Youth Theatre Group, who will be adding their talents to this 'must see' performance.

The pressure is on this year, as our last shows have gained us awards from the National Operatic and Dramatic Association (NODA), who once again will be in attendance to see if we can make it three in a row!

The plot for Aladdin is well known and the traditional story has been adapted for the village hall. Join Aladdin and his brother 'Wishee-Washee' and his Mother 'Widow Twanky' in their quest of good versus evil in the heart of Peaking. Will the evil Abanazar take control, will the Princess Jasmine end up marrying Aladdin, will the Genie of the Lamp save the day, will the Peaking police force actually do something right...? Well, for the answers to these questions you will need to book your seats and find out for yourselves!

Aladdin will be played by Tiff Campbell (Ex Haven Mate and professional singer), The princess is Kaytie Allan (recently graduated from stage school), Gavyn Lugsden (ex Butlin's Redcoat & Drama teacher) will be playing Widow Twanky, Abanazar will be played by local (and Cedars teacher) Malcolm Callaway, Wishee Washee is played by, A grade drama student Shauna Lugsden & the Genie has been interperated by the hilarious Reuben Womersley de Zaldua.

The show is set to run from Friday 27th to Sunday 29th of January over 5 performances. Tickets can be purchased on-line by visiting the groups website and clicking on the 'buy tickets' tab (curtaincalltheatregroup.co.uk) or by calling 07510 164888.

There will be a licenced bar and refreshments available, plus a raffle which is supported by local businesses.

This years show has been sponsored by Plumm Property, whose boards can be seen throughout the village promoting the event!

For your chance to win a family ticket to the show, just answer the following question: What is the name of Aladdin's brother?

Text your answer to the mobile number (above) starting with the word 'Focus' followed by your answer. Competition closes at midnight on Saturday 14th January 2017. The winner will be contacted the following day.

✉Gavyn

relax



let us
take care
of the sale or
rental of
your home



Christopher Pallet
Professional advice since 1973

Don't just take our word for it

"I have let properties through Christopher Pallet for over 10 years. I run the local pub and always refer people seeking to buy or rent to Colin and Linda because of the 1st class service I have experienced over the years. Their personal attention and "nothing is too much trouble" attitude makes them number one in my book."

Tom Dunnell

"My family wish to express our very grateful thanks for all your great help and consideration over the years letting and selling our properties"

Moller / Hawkins Family

"Thank you so much, I'll be sorry to lose you, you've restored my faith in Estate Agents. The nicest and most decent I have ever met. **** & **** estate agents need to take a training course from you !!

Fiona Newberry



Christopher Pallet
Professional advice since 1973

Zoopla
Smarter property search

rightmove
the UK's number one property site

Ombudsman
Services
Resolving Consumer Disputes

Call Linda or Colin on 01525 222333

ASPECT

YOUR LOCAL ELECTRICIAN
TOTTERNHOE
OVER 20 YEARS EXPERIENCE

ELECTRICAL

CONSUMER UNIT UPGRADES (FUSE BOARDS)
LIGHTING - INTERIOR, EXTERIOR & SECURITY
REWIRING
NEW INSTALLATIONS
TESTING & INSPECTION

ALL WORKS TO CURRENT WIRING & BUILDING REGULATIONS
PART P CERTIFICATED & FULLY INSURED



CALL STEVE ON
07976 283969 / 01582 665068
aspect@sparky.me



IRON OUT

Complete Laundry Service
Shirt Service
Duvet Cleaning
Ironing
Free collection & delivery from
home or office

01582 667332 / 07885 320042
Email: ironout@aol.com

Anne Johnson D.O. Registered Osteopath

6 Moor End,
Eaton Bray

01525 221958
07957 250682



R.J.O'CONNELL BUILDING SERVICES

EXTENSIONS, PATIOS,
DRIVEWAYS, ROOF REPAIRS
AND PROFESSIONAL
DECORATING SERVICE

TEL: 01296 681323
MOB: 07855 236726

Will Kimberley Garden Services 01442 255784

Phone for a free no obligation written estimate
wkgardenservices@btconnect.com

- High hedges a speciality
- Fences erected and repaired
- General garden tidy up's
- In fact any job in the garden!

EXCEEDING EXPECTATIONS IS JUST PART OF OUR SERVICE



If you're **selling**, **letting** or **buying** a home, make it happen with your local estate agent



01525 220605 • info@giblinproperty.co.uk
www.giblinproperty.co.uk

THE WORKTOP SPECIALIST

DELIVERING OUTSTANDING QUALITY & SERVICE FOR ALL YOUR WORKTOP & JOINERY NEEDS FOR OVER 50 YEARS

- FREE HOME MEASURING SERVICE
- CUTTING & EDGING SERVICE AVAILABLE
- VISIT OUR BRAND NEW SHOWROOM

Abbey Gate, Boscombe Road,
Dunstable, Bedfordshire, LU5 4FA

Tel: 01582 668 973 Fax: 01582 608 227
Email: sales@dunstablelaminates.co.uk
Web: www.dunstablelaminates.co.uk



@DLaminates



Dunstable Laminates



Make a Will

AND LASTING POWERS OF ATTORNEY

YOU DECIDE who is to run your affairs, who gets what, guardians etc, not the State.

MINIMISE RISK of Inheritance Tax and the disinheritance of children.

Best Price Guarantee

from specialist Solicitors and professional Will Writers since 1999

FREE HOME VISIT

For a DAYTIME or EVENING appointment call

01525 220644

www.wisechoicewills.co.uk

MAKING A WILL
HAS NEVER
BEEN EASIER



Will Trusts
& Probate
Practice

A wise choice



Café masala

Exquisite Indian Cuisine

We Cater for Office or Private Parties and don't forget to try our Sunday Buffet

10% Discount on all Takeaway Orders Over £12

Fully Licensed & Air Conditioned

Open Seven Days a Week

Hours: 12 Noon to 2.30pm & 6.00pm to 11.30pm

Tel: 01525 22 22 64

63 Bower Lane · Eaton Bray · Dunstable · Beds · LU6 1RB

email: taraque@hotmail.co.uk · www.cafemasala.com

alto window cleaning

For a professional service.....

- Window cleaning
- Conservatory cleaning
- Fascia & gutter cleaning

07876 594186

AARON FENCING

ALL TYPES OF DOMESTIC & COMMERCIAL FENCING & DECKING WORK UNDERTAKEN

FREE ESTIMATES
FULLY QUALIFIED & INSURED
PERSONAL SERVICE AT COMPETITIVE PRICES

TEL: 01582 665779
MOBILE: 07798 927272

7 STATION ROAD, DUNSTABLE, LU5 4HS

Buy Direct From Our
Own Farm

Master Card

VISA

From Ivinghoe Turf

- Commercial & Domestic
- Small Orders Welcome
- Bark, Grass Seed & Fertiliser
- Laying Service
- Discount on Larger Orders
- Screened & Blended Topsoil
- All Year Availability
- Forklift Delivery Available



ROLAWN[®]
Approved Rolawn
Stockist

Family firm farming since 1949

ALL AREAS

Freephone :

0800 043 5061

www.ivinghoeturf.com

The Bungalow, Vicarage Farm, Ivinghoe, Leighton Buzzard

Established over 20 Years

Duncan Tomblin TREE SURGEON

Forestry Contractor • Tree Felling
Crown Reduction & Thinnings
Deadwooding • Hedge Cutting
Stump Grinding • Site Clearance
Private Agriculture Fencing Contractor
Chipper & Stump Grinding Hire
Digger Hire

FULL PUBLIC LIABILITY INSURANCE
FREE ESTIMATES

'The Best Choice For Your Tree'

TEL: (01525) 221946
MOBILE: (07802) 410728

12 Greenways, Eaton Bray, Beds

ARC Contract Services Ltd

- Painting & Decorating • Plastering
 - Wall & Floor Tiling • Door Hanging
 - Bathroom & Kitchen Installations
- 20 years experience

All work guaranteed and fully insured

Call Adrian : **01582 539179**

Mobile : **07789730580**



WESTROPE BROS.

LAWN MOWER SERVICES

ALL TYPES OF GARDEN MOWERS SERVICED

THE RYE, EATON BRAY

Tel: Eaton Bray 220587

Gas Boiler Servicing

Over 40 years experience

Have your boiler serviced by a **Gas Safe**
and **CORGI** registered engineer

Other services available:

Maintenance, repair and installation of all domestic gas appliances including LPG. Boiler installations, Landlord Safety Certificates and Power flushing.

Free Quotes, no call out fee, and free friendly advice on all of the above.

Edwards Gas & Heating Services

Eaton Bray



Tel 01525 220626

www.edwardsgasandheating.co.uk
stevethegas@orange.net



Vicky

The Dog Grooming Specialist
www.vickysdogcare.co.uk



With a reputation for offering an exceptional personal service



- Over 29 years of professional experience
- Trained at the London Academy of Professional Groomers to the highest City and Guilds standard
- Dorwest Veterinary Trained
- Member of the Pet Industry Federation
- Sympathetic and gentle handling of all dogs
- **FREE** Health check with every grooming session
- **No cages used! No cage dryers!**
- One to one personal attention.....loads of TLC

Where Dogs Come First!



Mobile: 07796 445416

Telephone: 01525 222775

Email: enquiries@vickysdogcare.co.uk



Committed to the highest standards of animal welfare and customer care

Over 30
Years
experience.
FREE
Quotes

Misty Double Glazing?

Over 30
Years
experience.
FREE
Quotes

**KEEP YOUR WINDOW FRAMES...
... WE JUST REPLACE THE GLASS!**

- UPVC • Aluminium • Or Wood

Because we replace just the glass the repair is a
Fraction of the cost of a complete replacement window.

BEFORE



AFTER



mistydoubleglazing.co.uk

QUALITY GLAZING SERVICES

01525 876808

WE ALSO REPLACE BROKEN...

- Glass • Handles • Hinges & Locks
- AND REPAIR...Patio Doors & Conservatories!**



Virtual administrative
support to businesses &
private individuals

Website hosting

Domain registration

Desktop publishing

01525 229695

Email:

enquiries@morenassociates.co.uk

www.morenassociates.co.uk

Absolutely Plastered

**DOMESTIC/COMMERCIAL,
CLEAN AND RELIABLE SERVICE,
FREE ESTIMATES, FRIENDLY ADVICE**



* Plastering & Coving

* Floor Screeding

* Pebbledashing & Rendering

* Dry Lining

* Cornices & Mouldings

* Insurance Work Undertaken

CALL NICK CONWAY ON

Mobile: 07751 830716

Tel: 01296 688981

6 Cotes Way, Wing, LU7 0RB

*HPC Registered
CHIROPODIST & PODIATRIST*



Miss Johnston



For visits in your home

Phone: 07981 749038

(Also Central Luton surgery - open 6 days)

*Stuart Ball
Ceramic Tiler
Specialist
at all aspects of
Wall & Floor Tiling
Over 33 yrs Experience
01525 229381*



Stephen D. Janes

(Established in 1982)

**CARPENTRY, JOINERY
KITCHENS FITTED
PROPERTY MAINTENANCE
TELEPHONE: 01525 220649**

**G & J Groundwork
Ring Garry**
**01582 477568
07949 118011**

**Fencing Panels • Blockpaving • Paths
Shingle Drives • Slabs • Paving
Steps • Gardenwalls • New Patios
Relaying • Soak Aways • Drainage
Free estimates or advice • References
www.gandjgroundwork.co.uk**

Neil Hodson Associates

*BUILDING DESIGN
STRUCTURAL ENGINEERING*

**PROFESSIONAL BUILDING DESIGN,
ADVISORY AND DRAWING SERVICES**

From plans for domestic extensions
to multi-storey offices, commercial
buildings and factories.

Structural surveys, site surveying,
advice on building defects and
Feasibility Studies

Planning Applications and Building
Regulation Consents obtained.

**24 HIGH ST TRING
Tel 01442 890894 OR
Edlesborough 222462**

J Able bathrooms

New Showroom NOW Open in Edlesborough

DESIGN

Free CAD design of your bathroom, This will help you a photo realistic finished plan of your design.

SUPPLY

Come and browse our display suites, This will help you decide on the perfect bathroom for your needs.

INSTALLATION

Our installations are of the highest standards!
We take pride in making you delighted with the finished result.

We have suites in a wide range of styles to suit your budget.
Drop in or ring to make an evening appointment at the showroom
or a home visit at your convenience.

Opening Times

Monday. 9am-5pm
Tuesday. 9am-1pm
Wednesday. Closed
Thursday. 9am-1pm
Friday. 9am-5pm
Saturday. 9am-1pm
Sunday. Closed

T: 01525 220043 M: 07891 449077

3 Summerleys, Edlesborough, Buckinghamshire, LU6 2HR
W: www.jablebathrooms.co.uk E: ableplumbing@hotmail.co.uk



EDLESBOROUGH TENNIS CLUB

Website by Jupiterwill

www.etctennis.org

Play tennis Have fun Socialise Feel good Join our club

Join via the website, or call Iona McLean-Hall on 01525 220562 for details

Waldon Telecom Ltd

Phoenix House
Pyrford Road
West Byfleet
Surrey
KT14 6RA

Telephone

01932 411011

Facsimile

01932 411012

Email

enq@waldontelecom.com

Website

waldontelecom.com

waldon:

Our Ref: RW/CTIL/235912

4 November 2016

Dear Sir/Madam,

**PROPOSED MOBILE BASE STATION INSTALLATION AT WESTROPE BROTHERS SITE, 20 THE RYE, EATON BRAY, DUNSTABLE, LU6 2BQ
(NATIONAL GRID REFERENCE: 496654, 221228)**

Telefonica is in the process of seeking a suitable site in your area for a radio base station. The purpose of this letter is to provide you with information on the proposal and offer the opportunity for you to seek further information should you wish to do so.

As part of Telefonica's continued network improvement program there is a specific requirement for a radio base station at this location to provide new 2G, 3G and 4G coverage on the 02 mobile network within your local area. This will enhance voice, text and data (mobile internet) services.

The proposal, which we feel is the best solution to serve our customers in the local community, has been identified as the installation of a 17.5m monopole (total height) supporting 6no. antennas and 2no. 300mm diameter dishes, along with 3no. equipment cabinets, 1no. small scale electrical meter cabinet and development ancillary thereto, all contained within a compound formed of new 18m high fencing within the Westrope Brothers site on The Rye.

The apparatus would be located towards the south-eastern end of the property (the rear end, away from the site entrance on The Rye to the north), adjacent to the existing (other mobile operator) 17.5m high mobile telecommunications installation. This structure cannot accommodate the required apparatus, however it is considered that developing a second mobile installation at this site, with established telecoms use, is the most appropriate option available to the operator to enable enhanced connectivity within this area.

We would welcome your views (within 14 days of the date of this letter) before we finalise the proposal and submit the planning application to the Local Planning Authority.

Yours faithfully,

Ryan Ward

Waldon Telecom Ltd

(for and on behalf of CTIL and Telefonica UK Ltd)

Email: ryan.ward@waldontelecom.com

ILLUSTRIA

Kennels & Kathotel

Offering your pet a fully licensed Dog and Cat boarding service.

Purpose built Dog kennels

Individual Cat chalets with outdoor exercise runs

All in pleasant country surroundings

01582 ~ 665343



ILLUSTRIA
Springfield Road
Wellhead
NR Dunstable Beds
LU6 2JT



Proprietors

Mick, Denise and Michele Garrod



Live a healthy & active life

Free 10 minute advice chats with our Chartered Physiotherapists & HCPC Registered Podiatrists

PHYSIOTHERAPY
PODIATRY &
CHIROPODY
PILATES
ACUPUNCTURE
SPORTS INJURIES
MASSAGE
WOMEN'S HEALTH
& PREGNANCY
CARE

St. Judes
physiotherapy, health and well being

01525
377751 
enquiries@stjudesclinic.com
www.stjudesclinic.com

N.D.S.

General Building & Plumbing
(25 years experience)

- Roofing; Installer of UPVC guttering, soffits & fascia boards
- Kitchens & Bathrooms fitted
- Property Maintenance
- Fencing • Patios & Block Paving
- Gazebos • Garden Structures

Tel: 01525 221470

Mobile: 07946 626564

FREE ESTIMATES

...

**ALL WORK CONSIDERED
NO JOB TOO SMALL**

For a top quality
decorating job call

Marc Flack

01525 223166

Trading locally for 10 years
References are available



TIME TO MOVE?

**Don't be alarmed,
we're here to help!**

Established in 1999

e: info@plummproperty.co.uk

Five Good Reasons to use **Plumm Property**

Pprivate Offices - direct savings to you on fees

Local Knowledge - from our highly experienced team

Unrestrictive contracts - no lengthy tie-in periods

Marketing to outside area - attracting London buyers

Managing all your needs with a 1st class professional service

From Offer through to Completion of Sale



01296 660230

www.plummproperty.co.uk

2016 New Year's Eve Dinner Dance

at

Bellows Mill

Eaton Bray
LU6 1QZ

Ticket: £55 (profits to charity)
8.00pm for 8.30pm until 1am
Bring your own drinks. Pay Bar
Glass of Champagne at midnight.

Ragtime and Bluegrass
with Keith on Banjo
8pm

Three course dinner and
cheeseboard
8.30pm

Louise on vocals.
Website: www.alivenetwork.com

Dancing
10pm to 1.00am

For tickets email: rachael@bellowsmill.co.uk, or Tel: **01525 220548**
stating any food allergies or vegetarian if required.

Dress to impress/Black Tie

www.bellowsmill.co.uk

Adults only



LOCAL HERALDRY BY JOHN HOCKEY

Last month we looked at the wheat sheaf taken from the coat of arms of Charles Eamer Kempe, found in the stained glass of Edlesborough church. This time we move to the next village which has a direct etymological link to the Bray family.

Until the late 15th century, the village was simply known as Eaton but when Richard III was killed at the battle of Bosworth in 1485, his crown was picked up by Sir Reginald Bray and was eventually placed on the head of Henry Tudor, who ruled from 1485 – 1509 as Henry VII. The king granted the manor to Sir Reginald and the soubriquet Bray was added and it became the village name we know today.

Sir Reginald Bray was a serious player at court holding the posts of High Treasurer and Chancellor of the Duchy of Lancaster. In addition as an accomplished architect he had St George's chapel built in Westminster Abbey and is buried there.

The date 1490 (the year the manor was granted to Sir Reginald) appears on the small shield under the village sign situated on the green by the White Horse.

The Bray arms are delightfully simple:

Argent, a chevron between three eagles legs erased a la cuisse Sable, armed Gules.



Lady Jane Bray (Brass)



Bray Hemp



Eaton Bray
Village Sign



Bray Arms

i.e. The background or *field* is silver (normally shown as white) and a chevron is positioned between three eagles legs torn off (*erased*) at the thigh (*a la cuisse*) - these are black (*Sable*). The claws or talons are red (*armed Gules*). The fact that the eagle legs have talons does not necessarily mean that he fought in battle, though we can be fairly sure that in this case he did!

In the Lady Chapel of St Mary's church, Eaton Bray may be found a brass commemorating Jane, Lady Bray and on the wall is what looks like an inscribed 'R' lying on its back but is in fact a hemp bray, being a pun on the Bray name.

Next time: The West family, Marsworth

Eaton Bray Cricket Club 100 Club Winners November 2016

£100	Brian Hing
£25	Margaret Jones
£10	Isabel Pearson
£20	George French

Eaton Bray Cricket Club is kindly
sponsored by Meadow Marquees,
Houghton Insurance & Giblin Property.



George Crutcher

1945 -2016

Lesley, James, Kate, Tom and Andrew Crutcher would like to thank the many people who have sent cards, messages and flowers since George's sudden death. It has been a comfort to know that he was greatly appreciated for the contribution he made to our villages and for the friendships he made. Thank you for all the kindness and support we have received.

A man is a success.....
Who has lived well.....
Laughed often...and loved much....
Who has gained the respect...of intelligent men and women....
And the love of children....
Who has filled his niche...and accomplished his tasks...
Who has never...lacked appreciation of Earth's beauty...
Or failed to express it...
Who looked for the best in others...
And gave the very best he had.

Edlesborough School



The Year 1 children are busy ‘growing their brains’ at Edlesborough School as they embrace Growth Mindset, introduced as a whole school initiative earlier in September. This has encouraged the children to challenge themselves and learn from their mistakes. Thinking skills are very important for growing our brains but they are not always easy to manage. Children can often get confused with so many things to consider such as: their emotions, facts and logical argument. To support the children with their thinking skills, we have introduced De Bono’s Six Thinking Hats. Each of the hats represents a different way of thinking and focuses their thinking to deal with one thing at a time. So far we have had some very successful and often surprising sessions using our thinking hats. Additionally, it has provided the children with the tools to change their thinking focus to achieve more informed solutions and decisions. Best of all, it has been lots of fun!

✍️ Anna Davies-Muir

Year 1 Teacher & Growth Mindset Lead



CHARLES HILL

GARDEN SERVICES LTD
DESIGN | BUILD | MAINTAIN

LANDSCAPE CONTRACTORS

NCH Horticulture
City & Guilds Garden Design

A professional company working with all your garden requirements from design to complete landscape.

01525 242065

07773723236

www.charleshillgardenservices.co.uk
www.allyearroundbbq.co.uk

D Scott and Sons

Home Services Limited



Plumbing and Heating Specialists

- Boiler repair
- Boiler installations
- Powerflushing
- Annual servicing
- Landlords certificate
- Magnetic system filters
- Radiator valves
- Oil central heating

Other services...

We offer a full range of plumbing services including

full bathroom refits, showers, sinks, taps, traps & drainage and kitchen appliance installations.

www.dscottandsons.com

24/7
Call Out

contact us now on

01525 791563

07921 670437



Cheekatrade.com

ADRIENNE'S PRIVATE HIRE

Call for a FREE quotation
Book early to avoid disappointment
Very competitive prices

Airport Transfers
& Private Hire

07980 039715

Our executive Cars, 6 seater Minibuses and lady driver are all available

INFO@HOTACADEMY.CO.UK

'WICKED'
SUMMER
WORKSHOP

WEEKLY
CLASSES

HOT ACADEMY

FOR AGES 3-18YRS IN DUNSTABLE

STAGE COMBAT

ACTING

WEST END TUTORS

DANCING

SINGING

BOOK NOW!

07886 385799

LIMITED PLACES!

GRASS ROOTS GARDEN MAINTENANCE

TREE SURGERY, HEDGE PRUNING,
SELECTION SUPPLY AND PLANTING OF
TREES, SHRUBS AND HEDGES.
REGULAR MAINTENANCE/ONE-OFF JOBS
(Fully Insured)

Brian McMahon NCH (Arb)

01525 221960



Edlesborough Flowers

Flowers, Gifts, Jewellery
& More...

2 High Street,
Edlesborough,
LU6 2HS

Tel: 01525 221920

Christmas 2016 in Dagnall

Friday 2nd December

Father Christmas around
the Village, 6.30pm



Father Christmas Switches on
the Village Hall Lights, 7.30pm

Other Christmas Events in Dagnall

Christmas Fair

Saturday 3rd December - 1pm

Dagnall Children's Party

Sunday 4th December (Dagnall children only)

Carol Concert

Sunday 11th December - 2:30pm

Dagnall Over 60s Party (Members only)

Tuesday 20th December - 1.30pm

Best decorated house competition

Saturday 17th December

Carol service at the church

Sunday 18th December - 3pm

Music at St Mary's

NEW YEAR CONCERT

14 January, 2pm
when

**Vienna comes to
Eaton Bray!**



One of the country's top bands –
2013 National Silver Award winners –
Aylesbury Concert Band perform New
Year favourites including: *Trish Trash
Polka, The Blue Danube* and the
Radetzky March.

Tickets priced £7.50 (**children free**)
from the Box Office on 01525 222283.

'Carols by Candlelight'



Saturday 17th December @ 3.00 p.m.

Join us - for a feast of carols, mince pies and mulled wine at our magnificent
Church on the Hill, Edlesborough

Christmas Eve Candle Services

4.15pm
& 6pm

St Mary's Church
Eaton Bray



Animal Cruelty

Dear Editor,

If anyone is concerned about the welfare of the mare and foal in the paddock next to the allotments in Cow Lane, I would urge you to ring the R.S.P.C.A. With no shelter, mouldy, rain soaked hay and, at times, without any water for up to five days at a time, they are truly a pitiful sight.

Although the R.S.P.C.A are 'monitoring' the situation with a monthly visit, the animals are not deemed, at present, to be 'bad enough' to be taken into care. I am not quite sure just how 'bad' the situation has to be before any action is taken on their behalf.

If you have seen them and are concerned, the R.S.P.C.A emergency number is 0300 1234 999 and the inspector covering this area is Inspector Laws.

With the very worst of winter weather yet to come, I would urge you to pick up the phone and make that call.

Name and address withheld.

Focus accepts no responsibility as to the accuracy or content of any advertising or articles published in 'this' magazine, neither do they reflect the opinion of members of the Committee.



Eaton Bray Methodist Church

The Rev Jenny Spouge made a welcome return to us for our October Cafe Service, when we had a lively and interesting discussion on healing and the importance of treating people holistically. On the third October Sunday, we were all moved by Melvyn Corby's sermon urging us to hold fast to the Word of God, the key to the spread of the Gospel. Our new minister, Nigel Bibbings, led the Communion Service on the fourth Sunday. The theme of his service was 'God's unconditional love which is available to all'. He urged us to stay on track and be faithful to God throughout our lives, reminding us that He will be faithful to us whether or not we are successful. As usual when there is a fifth Sunday in the month, we and the Edlesborough Methodist Church congregation joined our friends in the Salvation Army at their morning service. It was a typically joyful occasion with a characteristically warm welcome and a very

meaningful sermon on God's amazing grace. The Saturday Cafe Community programme started again on the second Saturday in October and was a very pleasant event with a number of new visitors.

Date for your Diary:

Coffee Morning with Craft Stall

Saturday 3rd December 2016 10am – 12 noon

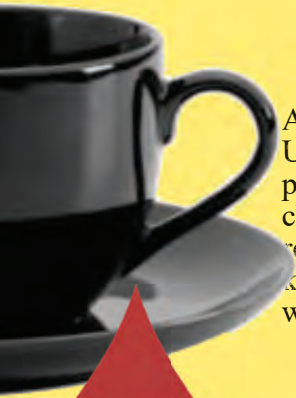


Dunstable & District Local History Society

**Tuesday 10 January, 7.45pm
History of the California**

The iconic ballroom at the foot of the Downs was the venue for a host of stars... everyone from the Rolling Stones and Tom Jones to Jimi Hendrix and the Drifters. Penny Silford, a Dunstable girl whose heart lies in the 60s and 70s, tell its story

**Methodist Church Hall, Dunstable
Visitors always welcome £2**



THE FILLING STATION

A relaxed, informal way of expressing the Christian faith. Using mid-week monthly meetings the Filling Station has a particular focus on rural communities and we find that the local church is strengthened and helped in many ways. We provide refreshments, authentic worship from guest worship leaders, keynote speakers and a relaxed social atmosphere. Everyone is welcome. Do come and bring your friends.

4th Tuesday of each month at 7.30 p.m.

Bellows Mill, Eaton Bray, Dunstable, Beds. LU6 1QZ

Speakers:

No meeting in December

24th January: Anne de Leyser, Ffald-y-Brenin. Local Houses of Prayer.

Local contact: Diane 07815 895501

To find out more visit www.thefillingstation.org.uk

**THE
FILLING
STATION**

**Dagnall Community Choir
invite you to their Annual**

Christmas Carol Concert

at Dagnall Village Hall

Sunday 11th December at 3pm.

This free concert will be dedicated to the memory of Kathy Bovington and all monies raised from a bucket collection will be donated to Dagnall School

Punch and mince pies will be available

Father Christmas will be putting in an appearance

Visit our website:www.dagnall-community-choir.co.uk



Ski Tips from St Judes

With ski season coming up we have put together some useful pointers to help you have a safe and happy holiday.

- **Prepare yourself** at least six weeks before you go, tailor your fitness regime towards skiing. Power, endurance, flexibility and agility are ALL important with skiing.
- **For strength**, try quarter squats or knee bends. (You should be cautious if you have any knee problems!)
- **For endurance**, try stepping up and down off the bottom stair whilst maintaining a good spinal posture, or simply take the stairs rather than the lift.
- **For agility**, try placing your feet together with your knees slightly bent as if skiing and now jump from side to side, keeping the knees “soft” (slightly bent.)
- **For flexibility**, concentrate on quadriceps (front of thigh,) hamstrings (back of thigh) and calf muscles.
- **For your core**, try some Pilates’ exercises to help improve your core stability and lengthen and strengthen your muscles. After a thorough assessment, a Chartered Physiotherapist can give you exercises that are tailored to your specific needs and abilities.

On the slopes

- **Warm up** before you ski and don’t get cold waiting for chair lifts – keep moving.
- **Fuel Stops** - don’t skip meals, keep your energy up with a good carbohydrate intake. Take muesli bars for snacks in rest periods.
- **Keep Hydrated** – with water.
- **Finally** - don’t get in “just one last ski run” - fatigue, combined with cold, can lead to poor judgement and accidents.

If you do get injured, stop skiing, follow the basic first aid guidelines of RICE (Rest, Ice, Compression and Elevation) and seek medical advice from a doctor or Chartered Physiotherapist.

A final note

If you are unsure about anything in this article, one of our Chartered Physiotherapists will be happy to help.



St Judes Clinic
26 Lake Street
Leighton Buzzard
LU7 1RX
☎ 01525 377751

📧 www.stjudesclinic.com
enquiries@stjudesclinic.com

www.stjudesclinic.com/treatments/ski-fit-pilates/

CHARITY CHRISTMAS PUZZLE

This annual Puzzle, set by Gordon Gray, Reader at St Mary’s. Eaton Bray, is rated by participants as one of the most enjoyable (and devious) they have tackled and, with a theme designed to help completion, it will appeal to people who enjoy doing word puzzles. Puzzlers have plenty of time to find the answers and Puzzles should be returned, with a donation, by 29th January.

Four highest scorers will each receive a £30 prize.

Everyone who enters will qualify for one of five £10 prizes.

Copies of the Puzzle can be accessed from the web at www.christmaspuzzle.co.uk. You can register early to receive a copy on the issue date of 8 December.

Over £63,000 raised for charity

£5,900 donated last year

This year’s puzzle will support five nominated charities.





Edlesborough Parish Neighbourhood Plan

Important Information

The next stage of the formal process to get a fully approved plan is beginning. Our Pre Submission document has been formally presented to AVDC and is published on our new Parish Council website www.edlesborough-pc.gov.uk This Pre-Sub is effectively the Draft of the Final Neighbourhood Plan

This marks the start of the formal consultation process with statutory bodies and with all parishioners. You will also receive a summary delivered directly to you within the next two weeks.

Key elements of the plan

- The plan will contain details of the proposals to build 169 dwellings in Edlesborough village by 2033.
- The Plan will also explain why there are no specific proposals to build any more homes in Dagnall and Northall.
- The number of dwellings to be built has been determined by AVDC as part of their Vale of Aylesbury Local Plan.
- The plan will detail a number of policies that AVDC will be obliged to consider when any application to build is submitted and will apply to new developments and other changes in our parish.
- The plan will also provide space for possible future expansion of Edlesborough School and the surgery.
- The plan will contain protections for our green spaces and historic buildings etc.
- It effectively gives our parish the right in law to be part of the process for approvals of new developments.
- Having an approved plan will protect us from opportunistic developments in the parish over and above the numbers we are required to build.
- The numbers set for our parish include any and all developments since April 2013 and any currently approved such as the site in Cow Lane and the site opposite Edlesborough School.

There are four stages we need to pass to get an approved plan

1st A minimum of 6 weeks for consultation on our Pre Submission Plan

2nd AVDC must approve our Final Plan

3rd An independent Government Inspector will then look to approve the plan

4th Each parishioner registered to vote on the Electoral Register will have the opportunity to vote YES or NO in a parish referendum to be held later in 2017.

Cont'd next page...

THIS IS NOT A TIME TO DO NOTHING...

You are not obliged to vote at the Referendum later in 2017, but if we fail to get an approved plan then all bets are off. AVDC and developers will have free rein to submit whatever house building plans they want in our parish over the years up to 2033. A NO vote will remove the protections provided by a Neighbourhood Plan. It is very important that you familiarise yourself with the proposals.

What you should do now

- Look at the proposals in the leaflet that will be delivered through your door.
- To view the full Plan please visit the parish website www.edlesborough-pc.gov.uk
- Look at the list of Questions and Answers on the parish website.
- If you want to find out even more then please attend the public meetings to be held before the 27th January 2017. Dates and venues of the public meetings will be given in the leaflet.
- Submit any comments/suggestions/observations by Friday 27th January 2017

The consultation process will run until the 27th of January and you can submit your comments/observations in writing to the Clerk - Penny Pataky 15 Summerleys, Edlesborough LU6 2HR or clerk@edlesborough-pc.gov.uk All submissions will be considered by the Neighbourhood Plan Steering Group to determine if any changes should be made to the final plan to be submitted for formal approval.

Thank you

✉ Alan Williams, Chairman - Edlesborough Parish Council

Clerk: Penny Pataky 01525 229358 *Office hours Mon – Fri 10.30am – 2.30pm (excl. Wed)*

Email: clerk@edlesborough-pc.gov.uk

Website: www.edlesborough-pc.gov.uk

Facebook: www.facebook.com/EDANParishCouncil



Berkhamsted Swimming Club has a long history of developing successful swimmers at local, county, regional and national levels. This is achieved by developing the swimmer from an all-round perspective, providing them with focus, direction, commitment, and support in addition to important life skills.

New members are welcome to join our caring and friendly family club, which has swimmers aged 8 years up to Masters Level as well as an active parent/coach committee and volunteer structure.

Contact **Geoff Wood**, Head Coach at headcoach@berkosc.org.uk if you would like your child(ren) to attend a swimming club trial.

www.berkosc.org.uk



Friends of Edlesborough School invites you to their delectable

Chocolate Themed Quiz!

On Saturday 28th January 2017

Doors open at 7.30pm for an 8pm start

At Edlesborough School

£10 per person - included in the price is a posh ploughman's,
and a of course, a sweet treat

There will be a cash bar serving alcoholic and soft drinks
(Maximum of 8 people per team)

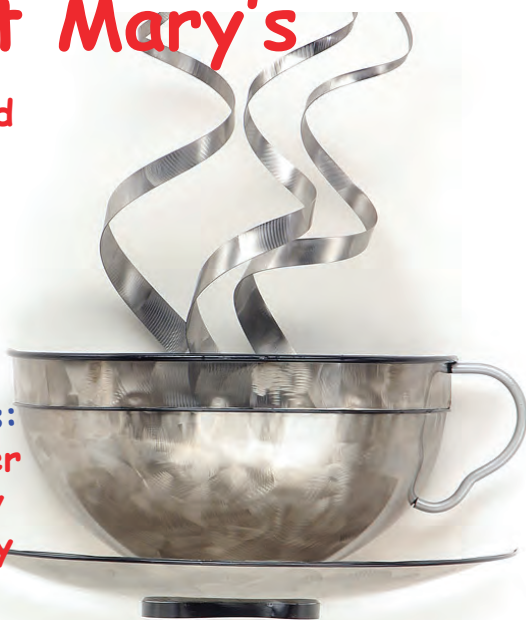
Please call Emma on 0781117099 or email
Chairoffoes@gmail.com to get your tickets

Spaces are limited so please book ASAP

Come for Coffee at St Mary's

For a warm welcome and
a cheering cuppa
each month in
St Mary's Church
Eaton Bray
10.30am - midday

Next Coffee Mornings:
Saturday 3rd December
Saturday 7th January
Saturday 4th February



Make your house a home with blinds and awnings from

**VANSAR
BLINDS**



www.vansarblinds.co.uk

- Free No Obligation Measuring And Quotations
- All Blinds Made To Measure
- Choose In The Comfort Of Your Own Home Or Workplace
- Family Run Business
- Large Range Of Quality, Affordable Fabrics And Colours To Choose From



Call: 01525 220477 or 01582 699565 E: sales@vansarblinds.co.uk

Financially Prudent (IFA) Ltd

23 The Green, Edlesborough, LU6 2JF

Your local IFA for impartial Personal or Corporate advice on:

- Mortgages
- Pensions & Annuities
- Insurance
- Savings & Investments

Call Paul Pearce on 01525 220480 or email paul@finpru.com for a no obligation initial discussion



Financially Prudent (IFA) Ltd is authorised and regulated by the Financial Conduct Authority

J.G.S. Metalwork & Son

**Specialists in Gates
& Gate Automation**

Access Control • Security Grilles • Railings
Balconies • Stairwells

www.jgsmetalwork.co.uk

Call in to discuss your ideas

High Street, Edlesborough LU6 2HS

Tel: 01525 220360 Fax: 01525 222786

Spinney Landscapes
& Gardening Services

All Aspects of Grounds Maintenance

Weed Control • Driveways & Patios
Lawn Care & Scarifying • Fencing
Turving • Tree Work
Snow Cleaning & Gritting

Tel: 01582 872084 Mob: 07876 500292

Email: chambo.1628@btinternet.com

Dagnall Church of England School



A Buckinghamshire co-educational school

For 4-7 year olds



Dagnall Church of England School offers small classes, an exciting curriculum, excellent care and good links with the local community



Ofsted 2011
"Pupils are confident,
very happy at school
and curious to learn."



Tel: 01442 842473
www.dagnall.bucks.sch.uk



E-mail:
office@dagnall.bucks.sch.uk



David Brown

Window Cleaning

Quality Reliable Service.

Regular, Occasional or
Single Visits.

Friendly Free Estimates.

Facias, Guttering & Conservatories.

External Cleaning & Maintenance.

Fully Insured.

Phone 01582 472113

Mobile 07534 837073

D & E HINES

High-Class Butchers

Quality Beef, Pork & Lamb

Grade A Poultry

BBQ & Sausage Speciality

Renowned for 'Bunkers Sausages'

Telephone: 01525 220413

98 High Street, Eaton Bray



GENERALMECHANICALSERVICESLTD

VEHICLE SERVICING AND REPAIRS



**MOTs • MOT REPAIRS • SERVICING
DIAGNOSTICS • TRACKING • AIR CONDITIONING
TYRES • CAMBELTS • COLLECTION & DELIVERY
WELDING & FABRICATION • BATTERIES**

All vehicles - all mechanical work!

1 HONEYWICK LANE, EATON BRAY, LU6 2BJ

reception@general-mechanical-services.co.uk

www.general-mechanical-services.co.uk



01525 222876



Peace of mind for motorists.



Protecting what's important

MJ Security Systems Ltd

MJ Security Systems

Contact Us For More Information

Unit 4, Arianne Business Centre,
Blackburn Road,
Townsend Industrial Estate,
Houghton Regis,
Bedfordshire,
LU5 5DZ

Please call for a free quotation

T: 0800 0856126

E: info@mjsecurity.co.uk

W: www.mjsecurity.co.uk



We also specialise in:

- IP Cameras
- Intruder Alarms
- Access Control
- CCTV & Monitoring
- Door Entry
- Covert Cameras
- Security Lighting



FROM ONLY
£439.95+VAT
Products and
Installation



Kit includes:

1 x Wireless Door Contact, 2 x Wireless
P.I.R., 1 x Wireless Sounder, 2 x Remote Set
and Unset Fobs.

Stylish • Wireless • Secure

M . P . S

Maintenance & Property Services

- KITCHENS AND BATHROOMS
- PAINTING AND DECORATING
- PROPERTY RENOVATIONS
- PLASTERBOARDING
- FENCING

FREE ESTIMATES
NO CALL OUT CHARGE
NO JOB TO SMALL
LOCAL

Contact:- Julian

07958 306301

E-mail – mps@mustoe.co.uk
www.mustoe.co.uk

Leighton Aerials

Established 1970

For all your aerial
and satellite needs
call Colin on

01525 374742



Edlesborough School & Pre-School



Pupils' behaviour is outstanding...

The environment for learning is exciting and stimulating...

A real strength of the school is pupils' attitude to their learning .

Ofsted 2013

For more information about our School, Pre-School and Before and After School facilities, visit our website at www.edlesborough.bucks.sch.uk

Please contact the school on 01525 220431 to arrange a visit.

S M Reilly & Son Ltd

General Builders & Contractors



Turning Your House into
a Home Since 1987

All aspects of the building trade undertaken

- *Extensions*Hard Landscaping*
- *Windows, Doors & Conservatories*
- *Fitting of Aluminium Bi-fold Doors*
- *Kitchen & Bathrooms*Drives*
- *Loft Conversions*

01525 221740 07970 637511



JAMES FALCON-CROSS

LANDSCAPING AND OUTDOOR LIVING DESIGN

**ALL ASPECTS OF LANDSCAPING
UNDERTAKEN INCLUDING
FENCING, TURFING AND PATIOS**

**TIMBER STRUCTURES
DESIGNED AND BUILT**

VEGETABLE AND HERB GARDENS

01442 843258 / 07769 901325

ONECROSSFALCON@GMAIL.COM

eww

E W Wallace & Co
Chartered Accountants
Tax Consultants
Business Advisors

Small business specialists serving
Beds, Bucks & Herts

- Annual accounts
- Tax returns
- Self-employed
- Limited companies
- Small business specialist
- Sage Accounts expertise
- Prompt, personal service
- Value-for-money fees
- Free initial consultation

01525 220826

www.ewwallace.co.uk

Eaton Bray Village Hall



- ❖ Equipped to support theatrical productions and film shows
- ❖ Large car park
- ❖ Large Kitchen with a six ring cooker, large refrigerator, hot trolley, crockery etc.
- ❖ 3 separate areas to hire to meet your needs and budget
- ❖ For more information and brochure please ring Norman on 07975 797202

- ❖ Superb venue for weddings
- ❖ Fantastic place for parties and dances
- ❖ A must for children's parties, can fit the bouncy castle inside if weather dictates!!!
- ❖ Keep fit groups
- ❖ Ideal for Club meetings or functions



WAGGING

wonderful dog grooming

Here to take care of your mucky pup!

Your local dog grooming service in Eaton Bray

1-2-1 care for your dog

NO cages!

07580 343396

www.waggingwonderful.co.uk

info@waggingwonderful.co.uk

James B Chadburn FBHI

Fine Antique clocks & Barometers

Specialist in repairs & restorations.

Valuations & clock finding service.

Advice & assistance on formation & disposal of private clock collections.

Quality clocks/barometers Bought & sold.



Telephone 01525 221165

Mobile 07790 000629

E-mail: info@jameschadburn.com

NG AUTOS



MAKING YOU AND YOUR CAR HAPPY

CAM BELTS • MOT'S • MOT REPAIRS • HEAD GASKETS
AIR CONDITIONING • RECOVERY/BREAKDOWN
DIAGNOSTICS SERVICING • BRAKES • SUSPENSION
CLUTCHES • GEARBOXES • TYRES • WHEEL BALANCING
WHEEL ALIGNMENT COLLECTION & DELIVERY

CALL NICK OR GARY

01525 220850 OR 07972 198615

SPARROW HALL FARM, LEIGHTON ROAD,
EDLESBOROUGH LU6 2ES



Reception



Service Bays



MOT Station

D.A. Windows Doors & Conservatories

23 Church Lane, Eaton Bray, LU6 2 DJ

Tel: 01525 221051 Mobile: 07807 798387
email: mimcavinder@hotmail.com

AUTHORISED
SWISH INSTALLER
WITH OVER 20
YEARS
EXPERIENCE

Installation of PVCu windows, doors and conservatories
Replacement glass units and window maintenance

QUALITY PRODUCTS - QUALITY WORKMANSHIP -
REASONABLE PRICES



General building
maintenance work
also undertaken
including:
Facades and Soffits
Gutters
Fencing

Accredited Member of the
Incorporation of Plastic
Window Fabricators and
Installers Limited



The Gentleman Gardener

Let your local RHS qualified gardener make your garden beautiful, from simple garden maintenance to total redesign of your garden.

Please call Barry on
01525-222451 or
07541196384

to pop round for a free chat.



C H BUILDERS

cwhawkes@tiscali.co.uk

Tel: 07989 357231

Local builder with over 35 years experience in the trade, specialising in:

- Kitchen fitting and alterations
- Extensions
- Loft conversions
- Renovations

Recommendations available

Please contact Chris to discuss any requirements for a free quotation

McTimoney CHIROPRACTIC



Margie Craib BSc BHSI DC AMC MMCA
Human and Animal Treatments

Ashridge Farm, Ringshall, Berkhamsted, Herts HP4 1ND
Telephone: (01442) 842729

General Chiropractic Council Registration No. 293

CHIMNEY SWEEP

Local & Est. Brush n Vac
Friendly, Clean and Efficient

Call **KEVIN HING** on

Tel: 01525 371592

Mob: 07940 528897

www.khing.co.uk

Member of NACS

Beekkeepers Diary for 2016

2016 was a bad year for honey, spring was wet and cold, by the time the weather improved the bulk of the spring blossom was gone. Bad weather not only affects the honey flow, young queens can't fly to mate, drones are scarce and weak, it is an unhelpful chain of events, but that is nature for you. I had three drone laying queens this year, that have to be replaced (at a cost) for the hives to survive.

Summer was relatively good and I managed to get some honey although borage was not planted. Borage is an important honey crop, it flowers during the month of July when there are not a lot of flowers around and bees love to work the blue flowers, unfortunately the Chinese flooded the market with cheap borage oil so it was not profitable for farmers to grow the crop, thanks Mr Chang!

The good news came from College Lake natural reserve in Tring, I introduced two empty WBC hives in the apple orchard in mid July and within a few days I had two swarms of nice bees taken residence, wild bees? Well, I hope so, it would be nice to know that there are wild colonies about. I put a super on each hive hoping for some honey and the bees obliged by filling them, lovely honey with all that wild marjoram and bramble blossom around.

No trip to Whitby for the heather honey, I missed last year as well, I think I am getting too old, carting six hives on the moors with all these funny looking sheep (there is nothing else around) is a bit daunting, next year? Yes of course.

Lots of ivy honey, it has become a plentiful crop in later years with the Sep/Oct weather so warm, the colonies do not need feeding and that is good for the bees to have natural stores for the winter and it is good for me as well.

Verroa treated, good stores in the hives, mouse guards and wood peckers wire mess protection, the hives are ready for winter, so is the beekeeper. Next year? Well, new things to contend with, American hive beetle and the new kid on the block, the Asian hornet. How do bees survive? I guess with difficulty.

Happy Christmas to you all.

✍️ Angel Huelamo



Edlesborough W.I.

Our October meeting was held in the Memorial Hall on 11th October when thirty nine WI members celebrated a very special occasion; the Birthday Dinner. The celebration was enhanced by the very pleasing music from the trio named, 'Aspect'.

On entering the hall one was met by a stunning sight comprising of an array of five tables and each table had been tastefully prepared for eight people. The tables were decorated with the colour theme of gold and cream; which complemented the green tables, and vases of small yellow chrysanthemums added to the occasion. After

an enjoyable meal, Bernadette, Michelle and Dave entertained us: Dave played the acoustic guitar while Bernadette and Michelle sang. The selection of songs ranged in tempo from: 'How deep is the Ocean' to 'Boogie Woogie Bugle Boy'.

At the end of the very enjoyable celebratory evening, our president, Jenny, informed the ladies that a total of one hundred and fifty pounds had been collected from the sale of raffle tickets for the Buckinghamshire, Oxfordshire and Berkshire Air Ambulance.

✍️ Jackie Flint

'Tis the Season, Zoo be Jolly

Come and join the festive fun at ZSL Whipsnade Zoo this Christmas

Christmas is coming at ZSL Whipsnade Zoo, and enchanting zookeeper talks, festive craft activities and the chance to Meet Santa promise to make for a magical family day out this December. Visitors can learn all there is to know about Santa's four-legged friends at the daily **Reindeer Revealed** zookeeper talk, while the Zoo's herd graze in their paddock.

For those who love to get creative at Christmas, there is an **Elves' workshop** where children (and big kids!) can help prepare festive treats for the animals.

Visitors can see the chimps receive their Christmas presents as keepers treat the troop to stockings stuffed with some tasty snacks, or attend one of the many special talks on offer, such as the Red Panda Talk, where visitors will hear how these creatures beat the freeze in their native Himalayan habitat.

Scarves, gloves and winter jackets can then be set aside during a guided tour of the Zoo's new Butterfly House, a tropical biome that is home to more than 30 species of butterfly.

A limited number of tickets are still available for the Zoo's magical **Meet Santa** experience. Children can share their Christmas wishes with Santa or for a **VIP breakfast with Santa** they can tiptoe into the Zoo before it opens, to meet Father Christmas and his elves.

Tickets are selling out fast for Meet Santa at ZSL Whipsnade Zoo, so book online now at www.zsl.org and find out more about visiting ZSL Whipsnade Zoo for the perfect festive family day out this Christmas. Advance booking is required.

ZSL Whipsnade Zoo's Meet Santa grotto is open during Zoo opening hours on the following dates:

- Saturday 3 & Sunday 4 December,
- Saturday 10 & Sunday 11 December,
- Saturday 17 December, Sunday 18 December,
- Monday 19 December, Tuesday 20 December, Wednesday 21 December, Thursday 22 December, Friday 23 December and Saturday 24 December.

Meet Santa experience prices: £10 for children. Accompanying adults go free. Normal entry charges to ZSL Whipsnade Zoo apply (£21.40 adults, £16.60 children, £19.55 concessions, under 3's go FREE. These prices include donation to ZSL. Online family offers available at www.zsl.org)

Magic Moment family portraits: £8 for 1, £12 for 2, £15 for 3 & £20 for 4

VIP breakfast with Santa runs Saturday 17 December, Sunday 18 December, and Wednesday 21 December to Saturday 24 December inclusive, 8am – approximately 10am. VIP breakfast with Santa prices: Children £40, adults £15. Prices include entry to the Zoo.

There is free car parking, immediately outside of the entrance gates. Entry tickets can be bought online at <http://www.zsl.org/zsl-whipsnade-zoo>. For more visitor information about ZSL Whipsnade Zoo, please visit www.zsl.org/whipsnade



Meercats investigating a cracker at Whipsnade Zoo



Nigel's Thoughts

Methodist Minister



Dear Friends,

What dark days these are. I am thinking not so much of the winter weather as the situations around the world affecting so many people.

From the continuing warfare in Syria and the struggle to liberate Mosul in Northern Iraq (and the immense suffering caused to so many innocent individuals and families as they flee for their lives), to strife, oppression and outright hostility in other parts of the world. Then there are the constitutional and political crises that threaten to overwhelm us closer to home, think Brexit and the quality of our welcome for refugees in genuine need as examples. These situations are but an indication of a deeper malaise that seems to grip God's world.

Surely our world does need to hear the message that this Advent and Christmas bring, that it was precisely in the darkness when it looked as though no way forward could be found, that the light which lightens everyone came into the world.

Jesus came into a world, in some ways not so different from our own. He became a refugee in a world that was at war and rife with injustice, God breaking in and sharing the Good News that he is with his children, God with them in the fiery furnace.

He is the only God who has dealt with chaos, through incarnation, death and resurrection. His alone are the love and care which promise an ultimate resolution to the problems which the whole world faces.

The problem is that even we as Christians only half act as if it were true. There is very little boldness to share the Good News and very little sacrifice made in order that it should be heard. In the darkness will you light a candle of love and hope in someone else's heart? Will you challenge the darkness with your light? That is what Jesus is always doing, as he comes in helplessness and vulnerability, to take on all the powers of darkness and wrongdoing and win the victory for all those who trust in him.

A careful preparation throughout Advent and then a Very Happy Christmas to you all.

✍️ Nigel

Appledown's Rescue Dog of the Month



Smart little Kira is a Staffie cross who was born in February 2016. This young lady is cheeky and full of beans! She loves everything about life – people, dogs, walks and playing! This bright girl would love agility or other training. She needs an active home where she will only be left for short periods. She could probably live with a male dog pending introductions.

If you can offer Kira or any of our other dogs a loving and secure home, please call in at the kennels any day between 10 a.m. and 4 p.m. or phone us for more details. Please note that there are restrictions on rehoming dogs to families with children under seven years of age. Full details of the rehoming process can be found on our website, or please contact the kennels.

Appledown Rescue and Rehoming Kennels Harling Road, Eaton Bray LU6 1QY

Call 01525 220383 or e-mail: appledown.kennels@btinternet.com

Website: www.appledownrescue.co.uk Follow us on Facebook & Twitter!



MARY JANES

21 April 1926 – 07 Nov 2016

Martin, Elizabeth & Peter thank everyone for their messages of sympathy
Our mum is now with the Jesus who she loved and served.



EATON BRAY PARISH COUNCIL

EBPC Neighbourhood Development Plan

EBPC's Steering Group are writing a Neighbourhood Plan (NP) in order to try and protect our village from unwanted housing development. You only have to look at neighbouring villages to see the effect of uncontrolled expansion. Through the NP we are looking to influence future Planning Approvals by controlling the number of houses, location and size. Other very important considerations are: Sustainable development, traffic, flood risk, biodiversity, heritage assets, landscape; including the 'gap' between Eaton Bray and nearby villages.

Working with Central Beds Council

CBC are developing their Local Plan which is similar to a NP but covering a considerably larger population and area it is a much bigger task. Our Steering Group met with CBC on 2nd November with the aim of working together to best suit the needs of EB.

Vision and Objectives

We are working on describing a vision for our plan:

- Remain a Green Belt Village
- New homes will minimise the effects of growth on the open character of the Green Belt.
- Broaden the housing stock to meet local needs.
- Special Character of the Conservation Area and Moor End are sustained.
- A more accessible and biodiverse network of green infrastructure established around the village.
- No greater risk of flooding or from inadequate facilities.
- Thriving Community facilities.

The Steering Group will be reporting progress through the Focus Magazine so that residents can keep up to date. If you would like your voice to be heard, please feel free to attend the next Steering Group meeting. Meetings are planned for the last Monday of the month at 19:30hrs at the Coffee Tavern, Eaton Bray.

*Please send your suggestions / comments regarding Planning Issues only to:
The Clerk, Eaton Bray Parish Council, 20 Good Intent, Edlesborough, LU6 2RD
Email: clerk@ebpc.co.uk - Website: www.ebpc.co.uk*



Dagnall Community Choir

The choir has had a successful autumn with our annual concert in Eaton Bray Village Hall taking pride of place. Those in attendance certainly enjoyed the evening as did the choir, who continue to go from strength to strength. For those of you who missed it try for next year, I can assure you it is a wonderful evening of musical entertainment.

We have also taken part in Eaton Bray Poppy Prom, something now of an annual appearance but one of which we are proud to be invited to take part and be part of.

The Choirs Christmas Concert, to be held at Dagnall Village Hall on December 11th at 3 pm will be dedicated to our member Kathy Bovington, who sadly passed away earlier this year. Kathy was the school secretary at Dagnall School for 18 years and was also extremely active in the village. This is a free concert and there will be a bucket collection. All monies raised will be donated to Dagnall School in Kathy's memory and will go towards the development of a memorial garden at the school. We are hopeful pupils from the school, will join us during the afternoon to sing one or two carols.

Now, there must be people in the villages who would like to sing but

have possibly never had the nerve to “give it a go”. If you are one of these why not come along on a Monday evening to All Saints Church, Dagnall at 8 pm and sing along with us. You will be made extremely welcome. You will also experience the joy of singing in a choir and making music. On top of that it is good for your health as it releases tension and exercises breathing to name but two benefits. You may also make new friends as we also organise trips and do's, so please do come along

CALLING ALL QUIZZERS

WE ARE MACMILLAN. CANCER SUPPORT

On 24 February 2017 take part in Macmillan's nationwide quiz and help raise vital funds for people affected by cancer.

Macmillan are looking for individuals, groups and businesses to host their nationwide quiz. Everything is provided for you including questions, answer sheets, invitations and posters

For more information macmillan.org.uk/mammoth or email fundraising@macmillan.org.uk

MACMILLAN MAMMOTH QUIZ 2017

Macmillan Cancer Support, registered charity in England and Wales (261617), Scotland (SC039907) and the Isle of Man (664), MAC16271_Event_2



We have had a busy start to the term at Dagnall Church of England School. The children have been busy researching countries as part of

our Toilet Twinning project and produced some excellent work presenting their findings. They have shown a great understanding of culture and community in a different county. The winner was chosen as Uganda and we look forward to receiving our certificate soon.



We have also been learning about the Hindu festival, Diwali. The children have read the story of Rama and Sita, made some Diya lamps and practised some Indian dancing. This work has really inspired the children and I think, they are creating a life-size model of Ravana (the 10 headed Demon King).

Our visit to the blackberry bushes provided a wealth of fruit which was turned into a tasty blackberry crumble back at school.

Eaton Bray Village Hall Quiz

Oct 29th 2016

I am sitting here on a wet Friday morning in November thinking that maybe I could almost repeat the bit I did in May about the biannual quiz. This is put on jointly by the Eaton Bray Village Hall Fund Raisers and Eaton Bray Tennis Club. But that will not do as we have new (well different from April) winners.

Keith's Best Mates won by just one point whilst Mixed Bag and Unwanted Two, tied, just one point behind. The lucky winners of the chocolates (last place) were Chemo Warriors 2.

Keith, our question master, set an all female Entertainment round, which obviously helped the male participants a lot! The last but one round of Art and Literature left a few teams struggling on 2 or 3 points.

We hope everybody enjoyed themselves and as we have 40 places booked for the next quiz on April 22nd 2017 we think we must be doing something right, mostly great questions from Keith, without whom it would not happen.

If you want tickets for the next quiz then contact Ross 01525221411 ross.bagni@btinternet.com

Onion Soup

One of my biggest pleasures on the Weekend Kitchen is welcoming new young talent on to the programme. The one thing you cannot train into a chef is passion and it's great when that passion for food is almost infectious. One such chef is Jack Behjet. He is young and, no pun intended, hungry. He has also just won Milton Keynes chef of the year for his work at the Crooked Billet in Newton Longville. He recently made his first appearance on the programme and made this delicious onion soup. Slightly controversially, he added leeks! So not one for the purists but the leeks add a lovely sweetness to this most comforting of soups.

Serves 6

1 good knob of butter

Olive oil

6 cloves garlic, peeled and crushed

5 red onions, peeled and sliced

3 large white onions, peeled and sliced

3 banana shallots, peeled and sliced

300g leeks, trimmed, washed and sliced

Sea salt

Freshly ground black pepper

A glug of sherry

2 litres organic beef, vegetable or chicken stock, hot

8 slices good-quality stale bread, 2cm thick

200g Cheddar cheese, freshly grated

A small drizzle of Worcestershire sauce

Gently heat the oil and butter then thrown in the garlic.

Add the onions, shallots and leeks. Season with salt and pepper.

Place a lid on the pan, leaving it slightly ajar, and cook nice and slowly for 30 minutes, without colouring the vegetables too much.

Remove the lid and cook for a further

20 minutes – your onions will become soft and golden. Stir occasionally so that nothing catches on the bottom. Having the patience to cook the onions slowly gives you an incredible sweetness and flavour, so don't be tempted to speed this bit up.

When your onions and leeks are lovely and silky, drizzle in a couple of tablespoons of sherry and the Worcestershire Sauce and allow them be fully absorbed into the vegetables. Then add the stock. Bring to the boil, turn the heat down and simmer for 10 to 15 minutes. You can skim any fat off the surface if you like, but I prefer to leave it because it adds good flavour.

Adjust the seasoning with salt and pepper. Toast your bread then tear it into chunks. Pour the soup into heat proof bowls and cover the top with the torn up bread, creating a lid. Pop the grated cheese on top.

Put the bowls on a baking tray and grill the cheese toppings until golden and melted. Serve.

Alternatively, you can simply grill the cheese toasts separately and just put them on top of the bowls of soup (as in the photo).

Hear wonderful recipes on Nick Coffey's Weekend Kitchen every Sunday morning on BBC Three Counties radio at 11am. You can also join Nick every weekday afternoon at midday for brilliant local guests with great stories to tell and all the music you want for your early afternoon.



95.5 FM | 103.8 FM | 104.5 FM | DAB | bbc.co.uk/threecounties

Your Photos



Left: Fungi at Ashridge by Brian Russell

Below: Sparrow Hawk plucking prey in Yew Tree Close by Richard Woodhead

Bottom: Christmas Robin by Richard Woodhead

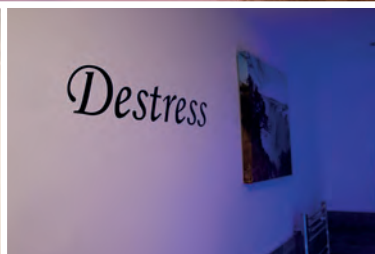


Floatation therapy

relaxation is the art of letting go



1 hour float
is equivalent to
4 hours sleep



CALL **01442 870686** TO BOOK A SESSION
reception@ejphysio.co.uk www.ejphysio.co.uk

3 The Old School House, George St, Hemel Hempstead, Herts, HP2 5HJ



STOCKISTS FOR



GUTTER BRUSH

- All aspects of Pressure Washing - Roof Cleaning / Coating specialists

- Safe cleaning system using rope access
- Roofs cleaned using 'controlled' pressure washing
- All water recycled

For before and after photos please visit:
<http://www.facebook.com/greatoutdoorsandin>



0800 298 5883

www.greatoutdoorsandin.co.uk



FREE QUOTATIONS



AJR

BUILDING SERVICES

Over 25 years experience

Friendly and Reliable
Service

Fully insured

All aspects of building
work undertaken:

- Kitchens & Bathrooms
- Refurbishments
- Garage Conversions & Extensions
- Plastering, Painting & Decorating
- Wall and Floor Tiling
- Patios and Fencing
- Fascias & Soffits
- General Maintenance

Mobile: 07931 308306 Tel: 01582 475428

Email: ajrbuildingservices@hotmail.com

A McClelland Pest Control



FOR FAST RESPONSE CALL:

Mobile 0777 494 8415

Office 01582 872158



*specialists in: wasps - bees - ants
hornets - fleas - cockroaches - bed
bugs - pigeons - magpies - rabbits
rats - mice - moles - squirrels
foxes - mink - feral cats*



UNMARKED VEHICLES

For further information please call or email
amcclellandpestcontrol33@gmail.com



family photography



hobby photography



product photography




locations & premises

www.redbrickphotography.uk

Eaton Bray's New Photographer!

07852 200 139

THE PERFECT PLACE FOR ANY OCCASION....

 *ACCOMMODATION - OFFERING A VARIETY OF
ROOMS/SUITES*

 *BREAKFAST, LUNCH OR DINNER
IN OUR HENRY'S RESTAURANT*

 *SUNDAY LUNCH*

 *MEETINGS*

 *WEDDING PACKAGES*

 *PRIVATE FUNCTIONS*

 *FUNERAL RECEPTIONS*

 *CHRISTMAS & NEW YEAR PARTIES*



FOR MORE INFORMATION ON WHAT WE OFFER,
PLEASE CALL US ON

01582 662201

OR VISIT OUR WEBSITE.

Leighton Plumbing & Heating

Oil fired boilers
service, repairs
& installations



All other aspects of plumbing
& heating undertaken

Oftec registered & insured

01525 385250
07774 567472

11 Woodman Close
Leighton Buzzard
Beds
LU7 3NU

leighton-plumbing@ntlworld.com



Helping Hands
The Home Care Specialists

Est. 1989

Do you need a Helping Hand?

Our **local** care team has been providing award winning quality homecare since 1989.

We offer a homecare service **from 30 minutes per week to full-time Live-in Care**, which enables you or your loved one to remain at home with compassion and dignity.

To find out how we can help,
call: **01296 752 632** or
visit: www.helpinghands.co.uk



Stoten Gillam
chartered accountants
chartered tax advisers

99 High Street South
Dunstable
LU6 3SF
Tel: (01582) 608601
www.stotengillam.co.uk

ICAEW
CHARTERED
ACCOUNTANTS



"Practical
Solutions for
Growing
Businesses"











www.plumbingandgas.org.uk

Gas boiler, fire & cooker,
servicing, installation
& repairs cylinders etc.

Heating system problems
inc. power-flushing

Dripping taps
& internal plumbing issues

Also solar thermal repairs & servicing
Inc. LPG and park homes

01582 674829

mark@plumbingandgas.org.uk




MOBILE MESSAGE THERAPY

20% OFF
FIRST 2 MESSAGES
Vouchers are available

Rejuvenate and revitalise with a massage.
Rest your mind, relax your body, relieve tensions,
restore calm and balance with some well deserved
respite from your busy life and daily stresses.

Sarah Tees, ITEC, CThA
07792 542760
01525 220323
esprittherapy.co.uk





FREE INITIAL CONSULTATION

OUR SERVICES INCLUDE:

Accounts • Bookkeeping Services • Cloud Based Bookkeeping • Tax Returns
Management Accounting and Reporting • CIS • Payroll Bureau • VAT Returns
Corporation Tax • Company Secretarial • Specialist Business and Tax Advice


Specialising in New Business Start-Ups

- Fixed Fee Quotes
- Unlimited Email and Telephone Support
- Back Office Solution
(dealing with your back office accounts function enabling you to focus on the rest of your business)

Please contact us for more information...

Gable End, Sparrow Hall Business Park
Leighton Road, Edlesborough. LU6 2ES
Tel: 01525 229 539 • Fax: 01525 220 180
enquiries@rileyaccounts.co.uk
www.rileyaccounts.co.uk

@RileyAccounts • Also on



Call us on...
01525 229 539

"YOUR LOCAL ACCOUNTANT"

We are a nurse-led home care provider committed to delivering the very highest standards of care.

Support from our dedicated team gives you or your loved one the peace of mind and confidence to be able to continue living at home.

Family-owned and managed, we are independent and do not belong to a national chain or franchise. We are registered with the CQC, number 1-1499072841.



**your own
home care**
putting the nursing back into care

To talk to us about your requirements please call Helen Yates RGN on 07920887414 or 01442 843064 or email helen.yates@yourownhomecare.co.uk



www.yourownhomecare.co.uk



Edlesborough Dental Practice



***Get the Beautiful Smile You Deserve!
Book your FREE Smile Assessment now.***

Edlesborough Dental Practice

Telephone: 01525 223175

11 Cow lane, Edlesborough, LU6 2HT

www.flossandsmile.co.uk

**General Family Dentistry * Crowns * Bridges * Dentures
Smile Makeovers * Tooth Whitening * Tooth straightening Implants
* Hygienist * Sedation * 0% Finance available**



Some comments from our December 2015 Ofsted report:

Children learn good manners and know how to treat each other with respect.

Staff are consistently kind and caring and this supports children to develop confidence and resilience.

Teaching is consistently good and children's safety is given the highest priority.

We are a committee run playgroup operating five mornings a week 9:15 – 12:15 for children aged 2 to school age.

If you would like to find out if your child would be happy here, please phone our Playgroup Leader, Ann Tobin on 07816 358 342.

www.dagnallunderfives.co.uk

DJH and Co Accountants Limited

Specialising in helping small
businesses and self-employed
people.

Financial Accounting, Bookkeeping,
Payroll and Tax Assistance services.
Competitive rates. Fully Licensed and insured.

01525 792288/07875560090
djhandcoaccountants@yahoo.com
www.djhandcoaccountants.co.uk

CHIROPODY HOME VISITING PRACTICE

Julia Reading, BSc(Hons)

17 years experience

- * Corns * Hard skin * Verrucae
- * Thickened/Ingrowing nails
- * Nail cutting * Diabetic feet

Please telephone: 0774 647 2781

for more information or to make
an appointment

The COLLEGE
of PODIATRY

hpcp
registered
www.hpcp-uk.org

Coffee Tavern



Large Hall £6.00 per hour

Committee Room £3.50 per hour

**Large Hall &
Committee Room** £8.00 per hour

Bookings 01525 220891

Stairlift and access ramp available

**Oven
Wizards™**
We clean your oven...so you don't have to!

Call today to have your oven, hob, extractor or
Aga professionally cleaned

Contact Paul Joyce: Tel 01525 792761
Mob 07808 580718
pauljoyce@ovenwizards.com

Wag & Stroll

*Dog Walking &
pet caring service*

*One off or regular
walks in familiar
surroundings*

*Cat sitting also available
Please call Sue on*

07758 647488

email: wagandstroll@gmail.com



**Electrical
Services**
www.rselectricalservices.com



**FULLY QUALIFIED
ELECTRICAL ENGINEER**
CPS Registered through NICEIC Scheme

Competitive prices and quality service

Available for all your domestic and
commercial electrical requirements

No job too small

Call Russell Sears:

**07578 008567
01525 220008**

17 Good Intent, Edlesborough

EATON BRAY PARISH COUNCIL
CENTRAL BEDFORDSHIRE COUNCIL
BIN & WASTE COLLECTIONS

Christmas 2016 collections

Recycling and household waste will be collected one day later than normal between Monday, 26 and Friday, 30 December

Scheduled collection

- Monday, 26 December
- Tuesday, 27 December
- Wednesday, 28 December
- Thursday, 29 December
- Friday, 30 December

Revised collection

- Tuesday, 27 December
- Wednesday, 28 December
- Thursday, 29 December
- Friday, 30 December
- Saturday, 31 December

All household refuse and recycling collections will return to normal from Monday, 2 January 2017.

Real Christmas trees

Real Christmas trees will be collected for recycling during week commencing Monday, 9 January 2017. Once the festivities are over, residents are requested to simply leave their real Christmas tree next to their bin on their normal waste or recycling collection day. Trees should be placed separately (not in any bin or bag) and residents are reminded that **no other garden waste will be accepted**. Trees should be no taller than 5ft with trunks no greater than 3 inches in diameter.

Alternatively, residents can recycle their real Christmas trees at their local Household Waste Recycling Centre.

Please note the kerbside collection of household garden waste will be suspended across Central Bedfordshire over the winter months from **Monday, 5 December 2016 until Friday, 24 February 2017**.

For more information, visit the Central Bedfordshire website, using the following link:
<http://www.centralbedfordshire.gov.uk/waste/bins/collection-day.aspx>



All Saints' Church, Dagnall
Services in December 2016 & January 2017

Sun.4th Dec.	9.00 am	Eucharist
	10.30 am	Morning Service
Sun.11th. Dec.	10.30 am	Morning Service
Sun. 18th Dec.	3.00 pm	Dagnall Village Carol Service
Christmas Day	10.30 am	Family Service
Sun. 1st Jan.	3.00 pm	Covenant Service
Sun. 8th Jan.	10.30 am	Morning Service
Sun. 15th Jan.	10.30 am	Family Communion
Sun. 22nd Jan.	10.30 am	Family Service
Sun 29th Jan.	10.30 am	Morning Service
Sun. 5th Feb.	9.00 am	Eucharist
	10.30 am	Morning Service



Sunday School meets each Sunday at 10.30 am except when there is a Family Service.

December at the Grove

Nabucco

Thursday 1 December 7.30pm

Tickets: £30.50/ £26.50/ £17.50 – concession and Friend tickets available

Opera & Ballet International proudly presents Verdi's haunting and melodic chorus of the Hebrew slaves as they are forced from their homeland into exile by the Babylonian King Nabucco, with international soloist, highly-praised chorus and full orchestra.

Aida

Friday 2 December 7.30pm

Tickets: £30.50/ £26.50/ £17.50 – concession and Friend tickets available

Opera & Ballet International proudly presents the tragic story of war, jealousy and revenge at whose heart is the doomed love of the beautiful Ethiopian slave girl Aida, and the Egyptian hero, Radames, with international soloists, highly-praised chorus and full orchestra.

Christmas Craft Fayre

Saturday 3 December 10am

Free entry

Looking for extra special and original gifts? Then look no further. The Christmas Craft Fayre is set to feature an exciting selection of stalls. Pop along and discover the talent of local craftsmen and women from the surrounding areas as you browse for seasonal treats?

Memphis Belles – Afternoon Tea

Wednesday 7 December 12.30pm

Tickets: £14.50

Indulge in an Afternoon Tea in our bright and airy Upper Foyer whilst listening to the toe-tapping classic tunes from the 40s and 50s, by the beautiful voices of all ladies group, Memphis Belles.

Aladdin

Thursday 8 December 2016 - Monday 2 January 2017

Tickets from £13

Those Magic Beans return to Dunstable for the theatre's 10th anniversary panto, with the spectacular family pantomime, Aladdin. Starring CBBC's Ed Petrie, Corrie's villain of the decade Brian Capron and Kieran and Sarah from Britain's Got Talent.



Get a Spring in your step with the 2017 film season...



INFERNO (12A)
THU 5 JAN 7.30PM
SAT 7 JAN 7.30PM
MON 9 JAN 2.30PM



THE GIRL ON THE TRAIN (15)
FRI 6 JAN 7.30PM
SAT 7 JAN 4.30PM
FRI 13 JAN 7.30PM



AMERICAN PASTORAL
(CERT. TBC)
MON 23 JAN 2.30PM
TUE 24 JAN 7.30PM



TROLLS (U)
SAT 7 JAN 1.30PM
SAT 14 JAN 11AM



QUEEN OF KATWE (PG)
TUE 10 JAN 7.30PM



STORKS (U)
SAT 7 JAN 11AM
SAT 14 JAN 1.30PM



MOONLIGHT (CERT. TBC)
SAT 14 JAN 7.30PM
WED 18 JAN 2.30 & 7.30PM



KEEPING UP WITH
THE JONESES (CERT. TBC)
TUE 17 JAN 7.30PM



FANTASTIC BEASTS
AND WHERE TO FIND
THEM (CERT. TBC)
SAT 14 JAN 4.30PM
MON 16 JAN 2.30PM
FRI 20 JAN 7.30PM



SULLY (12A)
WED 25 JAN 2.30 & 7.30PM
THU 26 JAN 7.30PM



A UNITED KINGDOM (12A)
FRI 27 JAN 7.30PM
MON 30 JAN 2.30PM

Box Office
01582 60 20 80 (opt 7)





Stay & Play Toddler Group

Musical Monkeys

Eaton Bray Village Hall
10-11.30am on Fridays

£4.50 for one adult and child
£1 for extra children/adults
0-6 months free

fitness 4fun



Get those muscles working! Tone and strengthen arms, legs, bums and tums – you'll look and feel great.

Why not give it a go? Only £5 per week for one hour of fun fitness. Pay-as-you-go, come when you can.

Come along and join our friendly group.

Everyone welcome.

No need to book – just show up.

What: Fitness4Fun with Kay

Where: Edlesborough Memorial Hall

When: Every Friday, 10:00-11:00 am

London Luton Airport

With an increase in aircraft in the area and in particular when the wind is from the East, we are getting some aircraft flying directly over the village to join the flight path into the airport. If you are disturbed by the traffic flying over the village, there is a complaints hotline number: 01582395382. This is an airport number where you can register your concerns. It is important to do this if we are to reduce these disturbances over our village.

If you need to complain about Heathrow flight noise the number is 0800 344 844.

Email: noise_complaints@heathrow.com



CARITAS CHRISTMAS SPECTACULAR

11 DECEMBER 6PM. St Mary's R.C. Church, West St, Dunstable LU6 1NY. Christmas Concert by award-winning Caritas Harmony with songs by Hadrian Academy Children's Choir. Refreshments available from 5pm

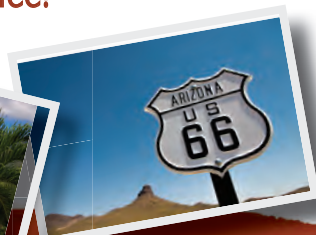
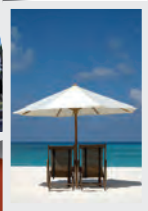
Tickets £8 under 12s free. For on-line tickets and more information visit www.caritasharmony.co.uk or call Jackie Howe 01582 599520. All welcome!



Merry Christmas & Happy New Year from Travel Impressions

If you need help and advice planning your next holiday, we will be extending our opening hours in January to include every Saturday from 9am-1pm.

Come in for a chat over a coffee!



Travel Impressions



01442 890265

enquiries@travelimpressions.co.uk

www.travelimpressions.co.uk

Suite 4, George House, 64 High Street, Tring, Herts. HP23 4AF

CHRISTMAS TREES FRESH FROM THE FARM

Top Quality
Christmas Trees
Direct From The
Grower

Look out for the
Giant Father
Christmas

GI Rogers & Son

Tel: 01442 842299

We are situated on the
B4506 between Ringshall
and Dagnall

winner of the best spruce 2009

10% OFF ANY TREE WITH THIS ADVERT

Dagnall Weather Station (AONB)

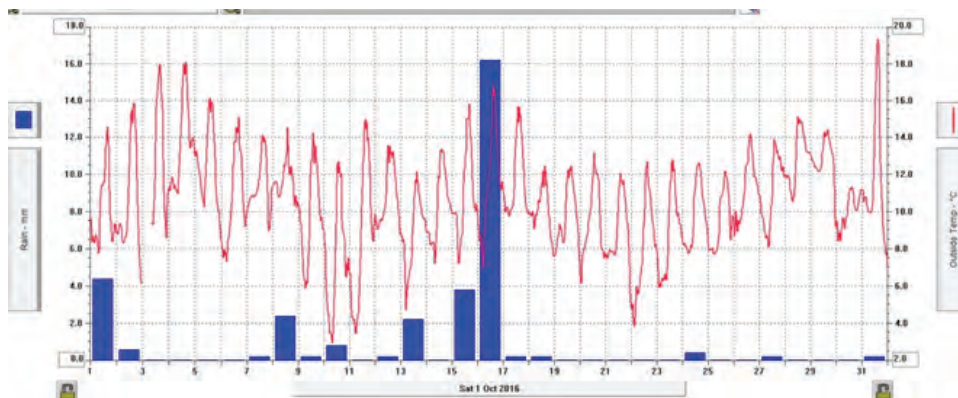
Weather Conditions for October 2016



Elevation: 450 ft - Latitude: 51° 50' 13" North - Longitude: 0° 33' 34" West

October was a dry month with only 32.2mm of rain recorded that is almost 50% less than the 9 year average, half of this fell in one day the 16th October. The temperature was normal for October but with the dominant wind coming from the east it felt much cooler. The last day of the month the temperature soared up to 19.5°C. Towards the end of the month high pressure sat over us with sunny day and clear nights resulting in fog which hung about in the mornings due to the light winds.

	High	Date/Time	Low	Date/Time
Temperature:	19.5°C	31 Oct 15.00	2.8°C	10 Oct 08.00
Mean Temperature	10.7°C			
Dewpoint:	12.7°C	31 Oct 13.30	2.2°C	10 Oct 08.00
Humidity:	97%	3 Oct 09.30	44%	3 Oct 15.30
Barometer:	1035.1mb	2 Oct 09.30	1003.2mb	15 Oct 04.30
Wind Speed	29 mph ESE	5 Oct 12.30	Months avg.	3.4 mph
Wind Chill:	19.3°C	31 Oct 15.00	2.9°C	10 Oct 08.00
Dominant Wind:	E			
*Rain Days: 15(T), 15(R)		Wettest Day 16 Oct	68.61mm	2.701 ins
Monthly Rain:	Total	Oct 2016	32.2	1.267 ins
Yearly Rain:	Total	10 Month	606.7 mm	23.885 ins



October 2016

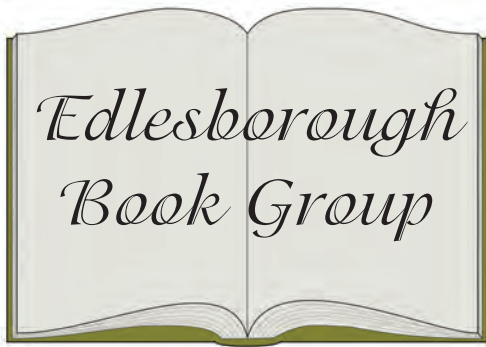
Plot shows Rain and Temperature

For weather data 24 hours a day, updated every 15 mins, visit: www.dagnallweather.co.uk for forecast and much more http://bit.ly/weather_dagnall.

You can also find Dagnall weather ipad & iphone on Wunderstation app, now updated every minute.

If anyone has a question, comment or wishes to contact me please email: david@dagnallweather.co.uk or telephone: 01442 843883.

Life's journey is not to arrive at the grave safely in a well preserved body. But rather to skid in sideways totally worn out, shouting "holy cow" what a ride!



Angel Pavement by J.B. Priestley

Written in 1930, *Angel Pavement* is a sketch of London during the time of the Depression. The novel tells the story of Twigg and Dersingham, a small business in Angel Pavement, which acts as an agent supplying wood veneers to the furniture trade. It employs a small staff, people living hum drum, unexciting lives, which they accept quietly, grateful to have employment at such a difficult time.

Twigg and Dersingham is struggling to survive against fierce competition and is managed ineptly by its owner Howard Dersingham. He, in fact, relies heavily on the ability of the cashier Herbert Smeeth, who takes pride in his work and gives his

time freely, trying to keep the firm solvent. The rest of the staff, Harold Turgis, the clerk, Miss Matfield the secretary, and Stanley the dreamy office boy complete the office personnel.

Into their lives, individually drawn by Priestley, burst Mr Golspie and his beautiful, spoilt daughter, Lena. Mr Golspie presents Mr Dersingham with a proposition which seems too good to refuse; in which he will provide veneers from the Baltic at very low rates. Mr Smeeth has reservations, but the deal goes ahead, changing the lives of all concerned. J. B. Priestley, whilst telling a very simple story, manages to give a vivid pen portrait of London during that time. Grey and dreary, with lives that have not much to cheer them, he gives us glimpses into the lives of ordinary working men and women living there. The descriptions are detailed and the conversations imagined by the author, give an insight into his other skill that of playwright. Our group all enjoyed the book. Some felt the descriptive passages overlong, others appreciated the details of place and speech. We would recommend this book.



EATON BRAY POPPY APPEAL 2016

A very large thank you to everyone who donated to this year's appeal, to all 22 house to house collectors who go out and knock on your doors and to every business in the village that had a box on their premises. An especial thank you goes to Eaton Bray Academy and to Mead Open Farm, both of which did really well with their boxes. The total from the house to house collections and all the boxes in our village came to £2,467.28 and this is a record! The house to house collectors don't have it easy – they have to juggle between going out in the daylight or the dark, avoiding Halloween, avoiding bonfire night and getting out before everyone has already donated for a poppy somewhere else. Half-term holiday dates are also a factor. A big welcome and our thanks also goes to those who knocked for the first time this year.

We are not sure if the annual Royal British Legion Poppy Appeal is organised in Edlesborough in the way that Eaton Bray is. If any Edlesborough resident is reading this and would consider becoming an organiser for their village, then please phone us on 221137 so that we may meet and show you what is actually involved.

✉ Roger and Helen Wilkinson (Poppy Appeal Organisers – Eaton Bray)

Salvation Sound



'Christmas is for the children' is a saying we often hear at this time of the year.

The reason for this season is certainly about one child, Jesus who came to earth as a baby. It is astonishing that of all the ways in which God could have reached us and saved humanity, He chose, in his infinite wisdom, to send a baby.

As I write this article I am in the Lake District awaiting the imminent birth of my second grandchild and in the preparations I have again been reminded how small, vulnerable, and helpless babies are. So the question that comes to mind is: why did God send Jesus as a baby?

A baby represents so much. For anyone who has children or has experienced the birth of a child, it is a miraculous occurrence. Babies represent life, hope, a new beginning, opportunity God's promise, and the future. What better way for the heavenly Father to give the gift of salvation and eternal life but through the birth of a baby who represents a spiritual new life. By coming as a baby God humbled Himself and experienced the life we lead. By doing this he understands our joy and sadness, hope and despair.

As we begin this season of advent, the birth of this baby, Jesus, lying in a manger in a lowly stable brings joy and hope, not just for children but for everyone. However just as Jesus faced grave danger from the cruel king Herod soon after his birth, many children today in different parts of the world are suffering. Many children are hungry and poor, they are dying from disease and malnutrition, they are victims of war, and they suffer many forms of violence from grown-ups. How can we not care when we see the suffering of so many children?

There are many children that need our help this Christmas. Once again the proceeds of our Community Carol Concert went to support the amazing work of Keech Hospice Care for children. Other charities, such as Shelter are requesting support to help families as they estimate that more than 120,000 British children will be homeless and in temporary accommodation this winter

Jesus shows us how important children are in God's eyes. God sent His Son to become present among us as a new-born baby, and He gathered children to Him. Jesus often presented children as an example of the type of faith we should have. He said "Truly I tell you, anyone who will not receive the kingdom of God like a little child will never enter it" (Mark 10:15). According to Jesus, the qualities of children that are worthy of emulation are humility and simple acceptance. Jesus wants each of us to possess a childlike faith; that is, a pure, unassuming, and humble faith. This straightforward type of faith allows us to receive God's gift of salvation without pretention or hypocrisy.

May we, this Christmas, not only consider the needs of children but also accept God's gift of love and salvation in a childlike way. Christmas isn't just for children - but maybe we should all approach this season with childlike wonder and with childlike faith.

The Salvation Army, Booth Place, Eaton Bray Weekly Activities



Sunday

Footprints (Sunday School)	9.45-10.45am
Morning Worship	11am
Messy Church	3-5pm
<i>(Last Sunday of the month)</i>	
Songs of Praise	4pm
<i>(3rd Sunday of the month from May to Dec)</i>	

Tuesday

Coffee Morning	
<i>(Alternate weeks)</i>	
Music practices (all welcome)	10-11.30am 7.30-9pm

Wednesday

Home League	2.30-3.30pm
<i>(Ladies Mtg but all welcome)</i>	
Champions Challenge Club <i>(term time)</i>	
<i>(Ages 5-10 years)</i>	
	5.45-6.45pm

Thursday

Parent and Toddler Group	
<i>(Term time)</i>	
	9.30-11.30am
Girls' Night Out	
<i>(1st Thursday of month)</i>	
	7.45pm
Sewing & Craft Bees	
<i>(2nd Thursday of month)</i>	
	7.45 pm
Ladies Fellowship	
<i>(Last week of month)</i>	
	7.45pm

*For further details please call Envoy Hilary Chadwick. T:01525 222087 / 07932 057490
E: hilary.chadwick@salvationarmy.org.uk
W: www.salvationarmy.org.uk/eaton-bray*

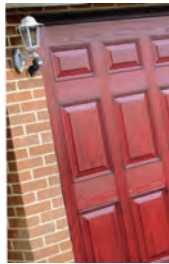


Premier Garage Doors & Gates



Quality Garage Doors

- ✓ Superb choice of designs in metal, wood and fibreglass
- ✓ Any size door made to your requirements
- ✓ Large selection of spares & fast repair service available
- ✓ New or existing doors converted to automatic
- ✓ Professionally fitted by own expert craftsmen
- ✓ Prompt free estimates & advice
- ✓ We cover all areas



(EST 1984)

DIY kits available
Insurance work welcome
Council approved
Remote control gates also available



Unit 7, Sparrow Hall Farm, Leighton Road, Edlesborough LU6 2ES

01525 220212

www.premiergaragedoors.co.uk



'TWAS THE NIGHT BEFORE CHRISTMAS
WHEN ALL THROUGH THE HOUSE
NOT A CREATURE WAS STIRRING,
NOT EVEN A MOUSE.

THEN THE OVEN WENT BANG
THE MICROWAVE POPPED
THE TV BLEW UP
AND THE DISHWASHER STOPPED.



"OH NO!" CRIED MUM
"BOTHER IT" SAID DAD
"TO MAKE MATTERS WORSE
WAYNE'S BIKE HAS A FLAT."

DON'T PANIC, DON'T PANIC
CHRISTMAS DAY WILL BE FINE
JUST LOOK IN THE FOCUS
GET JANES ON THE LINE!



Don't risk Christmas Day's festive fun. Whether you're looking for new carpet, replace an appliance or get a new bike for Wayne, pop along, give us a call or visit us online.



JANES

FLOORING DIGITAL APPLIANCES CYCLES SERVICE

01525 220208

WWW.JANESLTD.CO.UK

4-6 HIGH STREET, EDLESBOROUGH, LU6 2HS.