

FOCUS

November 2016

Remembrancetide

29th October - 13th November

The local village magazine just for Us!
Eaton Bray, Edlesborough, Northall & Dagnall
Focus is online at www.thefocusmagazine.co.uk



The White Horse Eaton Bray

Great food in a lovely pub

Market Square
Eaton Bray
Beds
LU6 2DG

www.eatonbraypub.co.uk



Tel : 01525 220 231



OUR CHRISTMAS DAY AND DECEMBER PARTY MENUS ARE AVAILABLE NOW

Diary note

Next Jazz at The White Horse

Sunday 6th November from 3:30pm

**Receive a 50% discount on a
bottle of house wine when
two people choose a main
course each from our
a la carte menu!**

(cut out and bring this with you)



invites you to

Café Community

Eaton Bray
Methodist
Church

Saturday 12th November 2016

11.00am to 1.00pm

Charity of the month:

Iain Rennie Hospice

Relax & chat with friends,
coffee/light lunch

All ages welcome (inc. activity area).



NORTHALL BAPTIST CHAPEL

Chapel Lane, Northall

(just beyond the 30 speed limit signs on
the road towards Leighton Buzzard)

Everyone is welcome to our Sunday
worship each week between 11am and
12.30pm including tea/coffee and time to
talk together.

For more information contact:

John Hazell 01525 218142

Email northallchapel@btinternet.com

There has been a Baptist Chapel in Northall
for more than 200 years. Today we continue
to seek to worship God, serve him in our
daily lives and support and encourage one
another in the difficult and the joyful times.

The Focus Magazine Committee

Editor: Sally Siddons

34 Wallace Drive, Eaton Bray 221733

Email: sallysid@hotmail.com

Assistant Editor: Liz Constable

Eaton Bray 222234

Email: lizconstable@hotmail.co.uk

Dagnall Representative: Sue Cawdell

10 Deans Meadow, Dagnall 01442 842200

Circulation Manager: John Plater

41 Church Lane, Eaton Bray 221095

Treasurer/Leaflet Enquiries: Ken Coates

10 The Nurseries, Eaton Bray 220868

Business Advertising: Sally Siddons

34 Wallace Drive, Eaton Bray 221733

Design and Layout: Tracey Moren

(Moren Associates Limited) 01525 229695

Printed by: Prioxy Press

Dunstable 01582 699851

Copy for publication to the Editor by the

10th of the month

*Focus accepts no responsibility as to the
accuracy or content of any advertising or articles
published in 'this' magazine, neither do they
reflect the opinion of members of the Committee.*

*© Articles published in Focus may not be
reproduced without permission.*

**December Focus will be a joint issue
for December & January. Don't forget
to send in your December & January
entries by 10th November**

Kindly Note

*If the event you wish to advertise falls in the first
week of the month, it is advisable to get the details
into Focus a month earlier. The magazines are
not delivered from the printers until the first of the
month, therefore it takes a few days for them all to
be circulated throughout the village.*

✍️ Editor

Focus is online at www.thefocusmagazine.co.uk

Village Diary November 2016



Weekly

- Mon-Fri (term time) Eaton Bray Pre-school, Eaton Bray Lower School, 01525 220468
- Mon-Fri (term time) Dagnall Under 5's, Dagnall Village Hall, 9.15am - 12.15pm, Mrs Ann Tobin 07816 358342
- Mon-Fri (term time) Edlesborough Pre-School, Edlesborough School, 01525 220431
manager@edlesborough.bucks.sch.uk
- Mon-Thu (term time) Totternhoe Pre-school, mornings, Totternhoe Lower School, Michelle Urbanowicz on 01582 668841
- Mondays Pilates, 10.45am, Totternhoe Memorial Hall, Lisa: 07799 893489
- Mondays Dagnall Community Choir, All Saints Church 7.45 – 9.45pm
- Mondays (term time) Movement and exercise classes with a dance flavour, Northall Village hall 2-3.30. Contact Jan 01442 864271.
- Mondays Curtain Call Youth Theatre 5-7.30pm, Eaton Bray Village Hall, Gavyn 01525 220525
- Mondays Curtain Call Theatre Group - 7:30-10:30pm Eaton Bray Village Hall, Sheila - sdtwinkletoes@yahoo.co.uk
- Mondays KFPA ISTD Classical Ballet classes, 3+yrs, 4.15pm, Edlesbrough Memorial Hall, www.kfpa.co.uk
- Tuesdays Line Dancing, 1.30-3p.m., Eaton Bray Village Hall, Lyn Stubbs 220731
- Tuesdays Pilates, 10-11am, Eaton Bray Village Hall, Nicky Roussou 07861 162680
- Tuesdays Totternhoe Baby & Toddler Group, 9.30-11.30am, St. Giles Church Hall, Ruth Allen, 01525 222468 or 07796 265174 or email ruthallen002@gmail.com
- Tuesdays Northall Baby & Toddler Group, 9:30-11:30am, (open in the Summer School Holidays) Northall Village Hall, Stacey Richmond 01525 222999/07957 607592
- Tuesdays Tap & Ballet Classes, JoAnn Latus School of Dance, 4-8pm, Eaton Bray Village Hall, 01582 620576
- Tuesdays Circuit Training - Eaton Bray School Hall - 7:15-8:15pm - Tel: 07969 572153
- Tuesdays Coffee Morning, Bring & Buy, Table Top Sale, 10-12noon, Salvation Army Hall, Booth Place, Eaton Bray
- Fortnightly Pilates, 7.15pm, Northall Village Hall, Lisa: 07799 893489
- Wednesdays Egyptian Dance Class, 7.30-8.45pm at Eaton Bray Village Hall. Contact: Soraya on 07976 964316 for more details
- Wednesdays Northall & District Age Concern Wednesday Club, 10am - 3pm, Northall Village Hall, Contact Anna on 07854 230243
- Wednesdays Dynamic Yoga 6.30-7.30pm £5 Eaton Bray Coffee Tavern, Keira 07936 693696
- Wednesdays (term time) Caterpillars Baby and Toddler Group 10am to 11:30am, Grace Baptist Church, Moor End, Edlesborough, £1 per family unit, Frances King 01525 229 610
- Wednesdays Pilates 6.45-8.45pm, Dagnall Village Hall, Andrea on 07855 138005 or andrea@naturalpilates.co.uk
- Wednesdays Art of Ju Jitsu martial arts class, Eaton Bray Village Hall, 7 -7.45pm ages 6-15yrs
- Thursdays Yoga, Northall Village Hall, 11.30am-1pm 01525 377542
- Thursdays Baby & Toddler Group, Salvation Army Hall, Booth Place, Eaton Bray, 9.30-11.30am
- Thursdays Jazzercise, 9.30-10.30am, Eaton Bray Village Hall, Angela Veryard, 01525 715208
- Thursdays KFPA Street dance classes 4+yrs 4pm, Edlesborough Memorial Hall, www.kfpa.co.uk
- Thursdays Tae Kwon-do, Dagnall Village Hall, 5.45-7.30pm 07813 755785
- Thursdays Clubbercise 7.30 - 8.30pm. Eaton Bray Hall - Gina Flitton 07846421756
- Fridays Tap & Ballet Classes, JoAnn Latus School of Dance, 4-8pm, Eaton Bray Village Hall, 01582 620576
- Fridays (term time) "Little Luvvies" baby ballet classes 10am-11.30am. Contact Emma Whittemore on 01525 376124
- Fridays (term time) Kids Club 6:00pm to 7:00pm Grace Baptist Church, Moor End, Edlesborough (across from the post office) Frances King 01525 229610

Village Diary November 2016

Fridays	Keep Fit class, Edlesborough Mermorial Hall 10 - 11am
Fridays	Stay & Play toddler group, 'Musical Monkeys' at the Eaton Bray Village Hall, 10-11.30am, £4.50 for one adult and child, £1 for extra children/adults, 0-6months free
Saturdays	Jazzercise, 9.30-10.30am, Eaton Bray Village Hall, Angela Veryard, 01525 715208
Saturdays	KFPA Musical Theatre classes 4+yrs www.kfpa.co.uk, 10am, Edlesborough Memorial Hall
Sundays	Sundays Worship at 10:30am and 6pm Grace Baptist Church, Moor End, Edlesborough (across from the post office). Barry King 01525 229610
Last Sunday	Messy Church, 3-5pm at The Salvation Army Booth Place

Monthly

1st Monday	Eaton Bray Parish Council Meeting, 7.30pm, The Coffee Tavern (except January-2nd Monday)
1st Monday	Eaton Bray W.I. Meeting, 7.30pm. Eaton Bray Methodist Church Hall. Contact Margaret Jones on 01525 220991
1st & 3rd Tuesday	Dunstable & District Orbit (social and charitable) Club meet at Dunstable Rugby Club at 8pm. For details contact 01525 222441 or 01582 755147
1st Saturday	St. Mary's Church, Eaton Bray Coffee Morning & Plant Sale, 10:30am - 12 noon
2nd & 4th Tuesday	TOTS, St Mary's, Eaton Bray, 2pm
2nd Tuesday	Dunstable & District Local History Society meeting, 7.45pm, Methodist Church Hall, Dunstable (opposite Wilkinson)
2nd Tuesday	Edlesborough W.I. Meeting, 7.30 pm, Edlesborough Memorial Hall
2nd Wednesday	St.Mary's Ladies Guild, 2pm, St.Mary's, Eaton Bray
2nd Wednesday	Eaton Bray & Edlesborough Lions Club, 7.30pm, The Coffee Tavern
2nd Thursday	CAMEO Coffee, tea & chat, 10am-12noon, Edlesborough Methodist Church
2nd Saturday	Workshops Dynamic Yoga 9.30-11am £10 Eaton Bray Coffee Tavern, Keira 07936 693696
3rd Thursday	Edlesborough Parish Council Meeting, 7.30pm, Memorial Hall
3rd Sunday	Lunch club 11.30 to 2.00pm, Eaton Bray Village Hall, Chris Hewitt 222288
4th Tuesday	The Filling Station, 7:30pm, Bellows Mill
Last Saturday	Coffee Morning, 10:30-12 noon, Edlesborough Methodist Church
Last Sunday	Messy Church, 3-5pm, Salvation Army, Booth Place, Eaton Bray, 07932 057490

Other Regular Events

6th	Beds Area Narrow Gauge Model Railway Club Meeting, 11.30am-4.30pm, Eaton Bray Village Hall
11th	Leukaemia Research Coffee Morning, 2 Dunstable Road, Dagnall 10.30am. All welcome.
12th	Cafe Community, 11am-1pm, Eaton Bray Methodist Church
15th	Dagnall Over Sixties 2pm in the village hall
28th	ELF walk from Eaton Bray Church, 9:30am

One Off/Annual/Irregular Events

12th	Poppy Prom, 7:30pm, St Mary's Eaton Bray, £12.50 & £10 Box Office: 01525 222283
19th	St Mary's Christmas Fair, 12noon-3pm, Eaton Bray Village Hall, 50p admission
24th	ELF Coffee Morning, The Coffee Tavern, 10:30am
26th	Steam in Beds Large Scale Narrow Gauge Model railway Show, 10-4.30, Eaton Bray Village Hall and St Mary's Church Eaton Bray. Adults £5, accompanied children free
26th	Christmas Coffee Morning, 10:30-12:30, All Saints' Dagnall
27th	Salvation Army Community Carol Service, 4pm, Eaton Bray Village Hall Tickets £1 07932 057490
30th	Dagnall Christmas Bingo, 7:30pm, Dagnall Village Hall

Village Notices



EDaN Community Transport
Peter Williams: 01442 842506

Village Hall Bookings

To book your local village hall for an event please contact the following:

Northall: Lorna Cabbage Tel: 07857 318696 Email: northallvhbookings@gmail.com

Eaton Bray: Norman Lee Tel: 01525 222831

Email: bookings@ebvh.co.uk Website www.ebvh.co.uk

Dagnall: Elizabeth Coates Tel: 01442 842550

Edlesborough Memorial Hall: Penny Pataky, Tel: 01525 229358

Email: manager@edlesborough-pc.gov.uk

Police Contact Numbers...

making neighbourhoods safer together

General Assistance (Recommended Number): 101 Emergency: 999

Bedfordshire Police (Eaton Bray)

Leighton Buzzard Police Station/Kathryn Horgan: 01582 473411

Typetalk: 18001 01582 473418

Email: LPT.LeightonBuzzardLinslade&Rural@bedfordshire.pnn.police.uk

Thames Valley Police (Edlesborough, Dagnall & Northall)

PCSO Jackie Dodson Mobile: 07800 703 524

Email: NHPT@thamesvalley.pnn.police.uk



EATON BRAY PARISH COUNCIL



Please come and help to run your village
BECOME A PARISH COUNCILLOR



The Parish Council is nine members of the public

We come to each Parish Council Meeting in the Coffee Tavern on the 1st Monday of each month and spend on average around six hours each month advising and helping to run our village.

At present we have a vacancy – will YOU come *and* join us?

If yes, please contact the Parish Clerk – contact details below.

You can also view our website for more details



Heidi Head, Parish Clerk & FRO

Email: clerk@ebpc.co.uk - Telephone/Fax: 01525 221464 - Website: www.ebpc.co.uk

Office Hours: Tuesday/Thursday/Friday 09:30-13:30hrs [messages can be left on answerphone]





EDLESBOROUGH PARISH COUNCIL WISHES TO THANK

St Mary's Carnival Committee and the Burghope Charity

For their generous donations which have enabled the purchase of two defibrillators within the Parish.

This brings the total number of defibrillators in the Parish to three, one in each village.

The locations are:

Edlesborough – Edlesborough Memorial Hall

Dagnall – Red Lion Public House

Northall – The Swan Public House

These units are registered with both the South Central Ambulance Service and the East of England Ambulance Service.

To access the unit please phone 999. You will be given the access code and the location of the box will be confirmed. The defibrillator is easy and safe to use. Further general information will be shared in future editions of Focus.



Eaton Bray with Edlesborough

Parish News

Church Warden & Pastoral Matters: (01525 220527)

Reader: Gordon Gray (01525 220136)

Website: www.stmaryseatonbray.org.uk

Facebook: St Mary's Eaton Bray

It's 97 years since Britain first came to a standstill, in 1919, to honour the dead of the First World War and, on Remembrance Sunday, 13th November, we will stand in silence, as we have done in each of the previous years, in memory of the men and women who gave their lives in that and subsequent conflicts around the world. We will use the wonderful words of Laurence Binyon's poetry:

“They shall grow not old, as we that are left grow old.

Age shall not weary them, nor the years condemn.

At the going down of the sun, and in the morning

We will remember them.”

It is right that we should remember and recall the sacrifice of those killed in war, for many of you reading this will have had family members killed or maimed in one of the World Wars. Remembrance Sunday is held in their memory and for the memory of those from villages like ours; I hope you will purchase a poppy and wear it with pride. Young men from our villages marched innocently to war in 1914 and 1939, proud to serve in defence of those they loved, but they soon experienced the unspeakable horrors of war. This year marked the centenary of some of the most awful battles of the Great War: Jutland, Verdun, the Somme – the very names cause me to shudder.

25 years later the world was at war again and, with merchant vessels mostly deployed to carry armaments, fuel and troops, starvation was rife throughout Europe. In this country the challenge of starvation was met by the ‘Dig for Victory’ campaign which encouraged people to transform gardens, parks and sports pitches into allotments to grow vegetables. However, in Europe the threat of starvation was met in the most callous ways. A whole race of people, the Jews, was singled out for slaughter so there would be more food for German mouths whilst the German army ruthlessly invaded Russia, slaughtering troops and civilians alike, in order to capture the grain harvests from Ukraine (the bread-basket of Europe). By the end of the war, over 6 million Jews, including 1.5 million children, and 9 million Russians had been systematically murdered.

At the end of the war in 1945 returning troops surely could not have imagined that in every subsequent year members of the British armed forces have fought and been killed on active service overseas nor that the total number of people killed in the wars of the twentieth century would be around 160 million. Warfare didn't come to an end with the turn of the millennium; it is estimated that over 1 million lives have been lost in war since the year 2000.

So on Remembrance Sunday maybe we should also reflect on today's wars; we are told that these will be primarily fought over diminishing natural resources – oil, mineral wealth. water. Just as throughout human history there are those who consider it acceptable to use brutal violence to take what they want from the poor and weak to

satisfy national and corporate greed. As G K Chesterton once wrote “It isn’t that they can’t see the solution. It is that they can’t see the problem.”

Jesus was born into a peasant family in a country ravaged and impoverished by occupation of the great empire of his day, Rome - he wouldn’t be surprised by today’s wars, just dismayed that his teaching had been ignored and distorted. As we remember the fallen dead from the last century we might ask “What is more important today, human greed or human life?”

✉ Gordon, Reader at St Mary’s Eaton Bray with Edlesborough

Services at St Mary’s Church

SUNDAYS : **8.00am** HOLY COMMUNION
 10.00am PARISH SUNG HOLY COMMUNION

On Third Sunday of each month:

10.00am – WORSHIP FOR EVERYONE a shorter, less formal service for families. (For anyone wishing to attend a service where Holy Communion is offered, there is a Family Communion at 10.30am at All Saints’ Church, Dagnall, where visitors are assured of a warm welcome).

WEEK-DAYS:

Tuesday: **2.00pm** TOTS (Tots on Tuesdays) (2nd & 4th Tuesdays)

Wednesday: **10.00am** Holy Communion

EVERYONE WELCOME AT THESE SERVICES



Smiling is infectious
You catch it like the flu
When someone smiled at me today
I started smiling too
I walked around the corner
And someone saw me grin
When he smiled I realised
I had passed it on to him
I thought about the smile
And then realised its worth
A single smile like mine
Could travel round the earth
So if you feel a smile begin
Don't leave it undetected
Start an epidemic
And get the world infected.





EATON BRAY PARISH COUNCIL



HIGHLIGHTS OF THE MINUTES

A full/detailed copy of the minutes for Eaton Bray Parish Council can be found on our website.

A hard copy of the minutes can also be viewed on the Parish Council's notice board at The Coffee Tavern.

Meeting of Eaton Bray Parish Council held on

Monday 5th September 2016 from 7:30pm at The Coffee Tavern

Central Beds Council (CBC) – Councillor Ken Janes

Website: www.centralbedfordshire.gov.uk - Customer Services: 0300 300 8302 -

Email: customers@centralbedfordshire.gov.uk.

Bedfordshire Police

Your Local Policing Team: **Non-emergency call 101 / All emergencies 999**

Vacancy - Parish Councillor:

There are vacancies for Parish Councillors on Eaton Bray Parish Council. If you are interested in joining the council please email the Parish Clerk or visit our website for more details

Eaton Bray Cricket Club

Eaton Bray Parish Council would like to congratulate Eaton Bray Cricket Club on winning the 1st Division and the 2nd team getting promotion to Division 5 of Four Counties Cricket League. As recognition of this achievement the Parish Council will be flying the Eaton Bray Cricket flag at the three corners for a week as a celebration of their success. A full report can be found on the Eaton Bray Website and facebook page.



Neighbourhood Plan

The Neighbourhood Plan Steering Group are looking for help, if you can spare some time to support this important scheme then please contact the Parish Clerk who will forward your details on to a member of the Steering Group.



Speedwatch

The Parish Council are always looking for new members. If you would like to get involved in trying to slow down traffic in the village and are concerned about road safety please contact the Parish Clerk expressing your interest.

Felling/Trimming Trees On Parish Council Land

In line with procedures set out by Central Bedfordshire Council, it is the Parish Council's policy NOT to top, lop or fell otherwise healthy trees that would otherwise need no maintenance to alleviate problems such as the build of leaves, seeds, berries or other minor debris on a neighbouring property to ... allow more light to a property, where the trees in question would not otherwise require any surgery, improve television or satellite reception, prevent roots entering already broken pipes. If a tree/hedge does not have birds nesting or if a tree does not have a tree preservation order, we can only work on it if there is a health and safety risk or the tree is diseased. However, residents are entitled under law to cut back to the boundary line any branches/hedging overhanging their property line.

Unauthorised Advertising

NO advertising on Parish Council land without prior consent from Eaton Bray Parish Council, the Council will remove any unauthorised advertising within the parish.



Parish Council Meeting Date: Held in The Coffee Tavern (1st floor) Monday 7th November 2016 from 7:30pm

Heidi Head, Parish Clerk & RFO

Email: clerk@ebpc.co.uk - Telephone/Fax: 01525 221464 - Website: www.ebpc.co.uk
Office Hours: Tuesday/Thursday/Friday 09:30-13:30hrs [messages can be left on answerphone]

Follow Eaton Bray Parish Council on Facebook and Twitter

Keep up to date with what is going on in the parish





UNICORN WINDOWS LTD

“WHERE QUALITY & SERVICE ARE NOT A MYTH”

www.unicornwindows.co.uk

Tel: 01525 854272



Unit 3 Youngs Industrial Estate, Stanbridge Road, Leighton Buzzard

comput@mation

computer support & services

Computer Support for Business & Home

Problem Solving:

- Virus & Spyware Removal
- Internet & Email Assistance
- Fault Diagnostics
- Repairs & Upgrades
- Slow Running PC's

Sales:

- Desktops, Laptops & Tablets
- Printers & Peripherals
- Software

Services:

- PC, Mac & Linux Support
- Wired & Wireless Networks
- Data Recovery
- Install & Set-up
- Health Checks

On-site Visits:
Office Hours & Evenings
by appointment

For friendly advice call John Wallace: 07968 536068 or 01525 261381
Email: john@computamtion.co.uk
Web: www.computamtion.co.uk

Computamtion Services Ltd - Est.1999 with over 25 years experience
9a Lower Way, Great Brickhill, Buckinghamshire, MK17 9AG

Carpet & Upholstery Cleaning

Professional & Local

All work guaranteed - not happy, don't pay

Powerful equipment means drier much quicker than other methods

100% Guaranteed no chemicals left in carpet when dry therefore will not easily resoil & perfectly safe for children & pets

Recommendations account for 90% of my work

Absolutely no hard sell

Telephone Colin for a Free Quote

DEEP-CLEAN

01525 851 811

www.deep-cleaners.co.uk

Email: colin@deep-cleaners.co.uk

EDLESBOROUGH SURGERY

11 Cow Lane Edlesborough

Enquiries - 01525 221630 Appointments - 01525 220333

www.edlesboroughsurgery.co.uk

**Dr J R Bell, Dr Heather White, Dr Stephanie Johnston
Dr Kirsten Riemer, Dr Charlotte Fisher**

Friendly village Practice offering a wide range of health services including coils/implants, minor surgery, travel advice, in house blood tests, on-line appointments and repeat prescription ordering. Nurse Practitioners offering acute clinics with same day appointments. Also, Midwife, Health Visitors in attendance. Local District Nurse service.

Long established training Practice with a rotation of qualified doctors.

EDLESBOROUGH PHARMACY

01525 223181

Pharmacist – Mitul Patel

Friendly reliable professional service at the pharmacy and well established delivery service to the villages. Professional advice always available.

All doctors/dentists/veterinary and hospital prescriptions dispensed.

Herbal/Homeopathic products available. In addition – Disability Aids, e.g. wheelchairs, walking frames, incontinence aids, Ostomy products, Malaria prophylaxis, Erectile dysfunction, Salbutamol supply without prescription. Flu vaccination available.



For all your painting & decorating requirements
 Domestic and Commercial
 call Max for a free estimate with no obligation
maxbro@btinternet.com



City & Guilds
 Qualified

- **Plumbing** - Showers, Toilets problems, Baths, Outside Taps, Drips & Leaks, Radiators, Tiling
- Specialising in Full or Partial Bathrooms Installations (References available on request)

Call Mark for a FREE no obligation quote **01525 220994**
 All work fully insured and guaranteed. **07842 653832**

30 Years Experience
Domestic & Commercial Security



Burglar Alarms
Redcare Monitored Systems
Intercoms
CCTV
Access Systems
Locks



CERTIFICATE NO. NAC/G/2113

Quality Installations – Competitive Prices
Insurance Approved **Free Surveys**

AAA SECURITY

01525 378222

Email: sales@aaasecurity.co.uk

www.aaasecurity.co.uk





Local family run business - Not a franchise

All chemicals used are Eco-friendly, non-toxic, non caustic and non allergenic
All work guaranteed and fully insured

All products are Child, Pet and Pregnant Safe

- Ovens & Hobs
- Extractor Hoods
- Microwave Ovens
- Agas
- Fridges
- Carpets
- Rugs
- Upholstery
- BBQs
- Freezers



☎ 01525 22 19 22 or 0800 122 3393

🌐 www.ecotechovenandcarpetcleaning.co.uk @ info@ecotechovencleaning.co.uk

Dominic Woolcott

Painter & Decorator



- Internal & External
- Plastering & Coving
- Insurance Work
- 20 Years Experience
- Competitive Rates

**For a professional job call:
01525 229682 or 07747 042879**

P. DYER ELECTRICAL

For all your Electrical & Testing & Inspection needs

- Re-wires
- Testing & Inspection
- Security Systems/Lighting
- LED & Low Energy Lighting
- Decorative Lighting
- PAT Testing
- Fuse Boards
- Fault Finding/Repairs

Fully insured, Part P registered, all work guaranteed.
Fast, friendly, reliable, local electrician. For a free,
no-obligation estimate, call Paul on:



Tel: 01525 222109
Mobile: 07850 682815



David John Harris



(Established 1992)

All Fencing Work • All Gates • Paving • Patios
Driveways • Shingle • Hedge Setting and Cutting
Grass Cutting • Turfing Specialist • Exterior
Painting Service • Sheds Small Building Work
Trees & Shrubs Supplied

Tel/Fax: 01525 221745
Mobile: 07889 143713

Barry Cato Motor Repairs

Est. 1981

Servicing, repairs and MOT's arranged

Workshop at:

r/o Norfolk House Farm, Harling Road
Eaton Bray, Dunstable, Beds, LU6 1QY

Tel: 01525 221681 (workshop)
07836 650015 (mobile)



GYM & TONIC

**WANT TO GET FIT, HAVE A
HEALTHIER LIFESTYLE & IMPROVE
THE WAY YOU LOOK & FEEL?**

The following can be provided in our
Gym in Edlesborough or in your home

- * **A Health & Fitness Consultation** *
- * **Personal Training** * **Massage** *

Ruth Anderson Dip. PT & ST, Member of: Inst of Sports
Therapists & Register of Nutritional Therapists

Tel:01525 223074 Mob:07812 163979

D NICHOLSON PLUMBING REPAIRS and INSTALLATIONS

NO JOB TOO SMALL



- Emergencies • Free Estimates
- No call out charges

Dave Nicholson

MOBILE: 07976 975604

HOME: 01525 872335

**City &
Guilds
Qualified**

For all your building needs look no further



BRIGGS

BUILDING & CARPENTRY SERVICES

Established 1981



For a professional, friendly service call:

(01525) 221767

(07970) 214439

Domestic & Commercial

Extensions
Renovations
Conversions
Alterations

New Builds
Roof Repairs
Kitchens
Bathrooms

Patios
Driveways
Decking
Garden Walls

Mini Digger, Skip Loader and Dumper Hire

All Work Guaranteed

Free Estimates



Flicks & Bangs

HAIR SALON

A warm, friendly salon offering a wide range of bespoke hair services for all the family. Feel free to pop in for a complimentary consultation.

www.flicksandbangs.com

Flicks & Bangs

66 High Street
Eaton Bray
Nr. Dunstable
Beds LU6 2DP

01525 221252



Opening Hours

Mon Closed
Tue 9 am - 5 pm
Wed 9 am - 5 pm
Thu 9 am - 8 pm
Fri 9 am - 7 pm
Sat 8 am - 4 pm
Sun Closed

pinstripes signs
pinstripes graphics
pinstripes clothing

01525 220485
07973 167779



BUSINESS CARDS

www.pinstripesigns.co.uk
find us on facebook
 pinstripes signs graphics clothing

WASHING MACHINE REPAIRS

ALSO
 DISHWASHERS, TUMBLE DRIERS,
 AND ELECTRIC COOKERS



Call
ANDERSON D.R.S.

01582 665764

www.andersondrs.co.uk
 SALES AND RENTALS AVAILABLE

 **Lee Hutt**
 Heating & Plumbing Services

Bathrooms, Design & Installation

Tiling ♦ Heating ♦ Powerflushing ♦ Taps ♦ Leaks

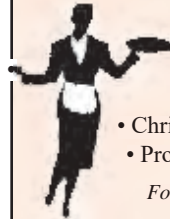
Call Outs ♦ Free Estimates Given



01525 222145



07971 559185



Patricia's Cuisine

Catering For All Occasions

- Buffets, Dinners •
- Christenings, Weddings, Funerals •
- Promotions & Business Lunches •

For Enquiries & Menu

Meadside Farm, 104 High Street,
 Eaton Bray, Bedfordshire, LU6 2DP

Telephone: 01525 222174

P.J.BRINKLOW

Electrical Contractor

01525 220469

07860 781330

**43 Pebblemoor
 Edlesborough**

'A wonderful place to be'



Eaton Bray Academy



T. 01525 220468

E. admin@eba.ec

www.eatonbrayacademy.co.uk

smartAUTOGROUP

ESTABLISHED LOCALLY FOR 14 YEARS

Fully equipped Car Bodyshop, Service Workshop
& MOT Bay



- New MOT Bay
- 4 Wheel Alignment & Tyre Fitting
- Specialists in Complete Classic Car Restoration
- Dealer Trained Technicians
- Ford, Vauxhall, VW, Audi
- Extensive Experience in Prestige Car Paintwork and Repair
- One-Stop-Shop for all your Servicing, Repairs, Bodywork & Maintenance
- Accident & Vandalism Damage
- All Insurance Work Undertaken - We can also cover your Excess and provide a Courtesy Vehicle (subject to T's & C's)
- Mobile Car Body Repairs – Fully Equipped Vans that come to your Home or Office.
- Alloy Wheels – Dents - Bumpers – Chips – Scratches - Scuffs
- Free Collection and Delivery, Loan Cars and Lifts when required

We pride ourselves on always being competitive for the right job.

**£10 OFF WITH
THIS ADVERT**



Call us on **01582 664772** or visit **www.smartautogroup.co.uk**

Units 17 & 18a, Icknield Way Farm, Tring Road, Eaton Bray, Dunstable LU6 2JX



Edlesborough Parish Neighbourhood Plan Q & As

Why are we developing a Neighbourhood Plan? A Neighbourhood Plan gives us the opportunity to influence the developments in the parish over the next 15 years or so. If we get approval it will guide the planning authorities on future applications by developers. It will help to protect us from opportunistic developments until 2033.

Who decided how many houses we have to build? AVDC (Aylesbury Vale District Council) is in the process of getting their overall local plan approved. In that plan they have laid out the housing numbers required of the towns and villages in the district. The Draft Vale of Aylesbury Plan (VALP) was published for consultation from 7th July 2016 and residents of AVDC were invited to submit their views on the plan. Consultation on the plan closed on 5th September 2016.

How many houses do we have to build? The village of Edlesborough is classified in VALP as a 'large' village and has an allocation of 164 houses. Dwellings built since 2013 and any sites that already have planning permission form part of the 164 target.

Can we plan for less than the target number? No, if our plan has less than the target number then it will be rejected by AVDC and the Government Inspector. To get our plan approved we must comply with the requirements of VALP. This should ensure that we have a cap on the number of houses to be built until 2033.

Why can't Dagnall and Northall take some of the housing allocation from Edlesborough? Apart from the fact that Dagnall is Green Belt, it and Northall have been categorised in VALP as 'small' villages with few facilities and are not deemed as sustainable as Edlesborough. Allocating more houses in Northall and Dagnall than required by VALP would not reduce the allocation for Edlesborough. Each individual settlement is considered separately, not the Parish as a whole.

Why don't we put the new houses on sites such as the old RAF site or adjacent to the houses on the Tring Road? Firstly, the RAF site is in an AONB. It was probably there before AONB and Green Belt were introduced. Also there are no services there and the assessment for new houses is based on key sustainability criteria contained in VALP. This also applies to any existing houses outside the existing main village settlements. One key factor in planning is a requirement that new developments are contiguous with existing housing in the village to prevent sprawl.

Can we refuse to comply with VALP? Yes, but then we will not have a Neighbourhood Plan that can protect us. Your Parish Council decided that getting a Neighbourhood Plan approved is the best course of action for our parish. The Plan should enable us to limit the numbers and influence the types on new homes to be built in the parish.

How does the plan get approved? We will submit our plan to AVDC for approval. If they approve it an independent Government Inspector has to approve it. Finally, the plan will be put to our parish residents on the Electoral Register to vote Yes or No. A simple majority of those who vote is needed.

What happens if the majority vote NO? In that event we might have a chance for a further attempt to get an approved plan but it is unlikely. In the event of a **NO** majority, the protections provided by a Neighbourhood Plan will not apply and developers can continue to apply for new developments with most of the normal protections removed.

AVDC will then decide how many and where developments in our parish will take place. It is likely they will allocate more housing.

What is the next step? The Steering Group expects to publish a **draft** plan in November. It will be available on the parish website and we will deliver a summary to each household. There will be a six-week consultation process for feedback from parishioners and other statutory bodies. We will publicise when the draft plan is available.

Where can I get more information in the meantime? Many more Q and A's together with detailed current proposals are available on the parish website in the Neighbourhood Plan section under Planning.

www.edlesborough-pc.gov.uk

What if I have questions other than those on the website? Please send your questions to the clerk Penny Pataky clerk@edlesborough-pc.gov.uk We will attempt to answer them as soon as possible.

Clerk: Penny Pataky 01525 229358 Office hours Mon – Fri 10.30am – 2.30pm (excl. Wed)

Email: clerk@edlesborough-pc.gov.uk

Website: www.edlesborough-pc.gov.uk

Facebook: www.facebook.com/EDANParishCouncil



Eaton Bray Methodist Church

Our first September service was led by a new visiting preacher,

Stephen Poxon. His sermon, based on the story of the runaway slave in Philemon, was an inspiring reminder of God's wonderful love and forgiveness; God welcomes us back with open arms when we have drifted away and become lost. On the second Sunday, Belinda Freeman ran our cafe service with her usual zest and joy. She helped us to think about ensuring the presence of God in our mundane routines and rooting ourselves in his service on a daily basis. We welcomed Rev Wallace Edwards back for our Communion Service on the third Sunday. He gave us a typically thoughtful sermon, asking us to be zealous in serving the Lord. The month closed with a delightful Harvest Festival in a church decked gloriously with glorious flowers and fruit. It was a special day for more than one reason; our new Minister, Rev Nigel Bibbings and his wife, Elizabeth, a lay preacher, took their

first service in our church, celebrating God's bountiful harvest in all walks of human activity and reminding us that, in a world obsessed with immediate results, God's timescale and pace may often be very different from our own. The service was followed by a delicious lunch shared with many friends from other local churches. October opened with a very interesting service led by one of our members, Keith Blackburn. It celebrated the life of Isaac Watts, a fine 18th Century hymn writer who gave us many memorable hymns, based on the psalms. One of the most famous is 'Our God, Our Help in Ages Past

Dates for your Diary:

Cafe Community

Saturday 12th November 11am - 1pm

There will be a craft stall with handiwork.

We will be delighted to see you if you come to join us for a cup of tea or coffee and/or a light lunch.

Coffee Morning with Craft Stall

Saturday 3rd December 10am – 12 noon

Further objection to planning application in Slicketts Lane sent to AVDC

1 MANOR FARM CLOSE,
EDLESBOROUGH,
BEDS, LU6 2HZ.
5th October 2016.

Dear Ms Harris,

Re Proposed development of 10 houses at 5 Slicketts Lane, Edlesborough,
Reference Code – 16/02821/AOP,

I would like to draw your attention to the well-established Badger sett at No 5 Slicketts Lane. The sett has visible entry and exit chambers to the right of the property on the edge of the join of Mr Leary's land to the field directly to the right of his property.

The sett has been active for many years with regular sightings and nocturnal visits to neighbouring gardens. There are more chambers running along the perimeter of Mr Leary's garden at the back. These are, at present, well hidden by vegetation, bushes and scrub but, of course, are totally exposed and vulnerable once earth movers and heavy equipment start their work.

On your website regarding the proposed building, you mention that environmental surveys have been carried out with suggestions that bat boxes and bird boxes are installed into the finished development...but, mysteriously, no mention of badgers.

I have contacted the Badger Trust and the Beds Wildlife Trust on the matter and of course, I do not need to remind you that any damage, interference or blocking access to a badger sett, is illegal under the 1992 Protection of Badgers, and will result in prosecution.

I will be interested to hear your comments and to see what steps you will be taking to protect this sett.

yours sincerely,

Sue Loch (Mrs.)

St Mary's 100 Club

The October draw for St Mary's 100 Club was made by some of those who attended this month's coffee morning in the church.

The lucky prize-winners are:

1st	No. 117	Jennifer Maxwell	£59.00
2nd	No. 66	Iain Stubbs	£35.40
3rd	No. 108	Abigail Newbiggin	£23.60

One of those lucky winners doesn't live in our villages, but is a relative of someone who does. It's dawned on me that a year's subscription might make an ideal gift (such as birthday present) for someone dear to you – and who knows, they could end up with a small windfall!

If you'd like to make such a gift, or join the fun yourself (for just £2 per month), then please contact me (Gary Freeman) for an application form – gary@old-wrestlers.demon.co.uk

Good Luck!!

The logo for Heirloom, featuring the word "HEIRLOOM" in a stylized, serif font with a thin horizontal line above the letters.

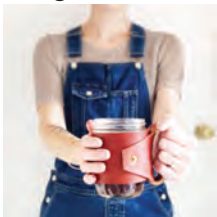
Heirloom: Edlesborough's new cafe

If good coffee is a given, what more should a good cafe provide?

Adeline and Scott found themselves asking this very question a few months ago when they decided to take over the village cafe in Edlesborough. With over a decade's experience in speciality coffee, there's no doubt that good coffee would be high on the list, but what else is important to a local family wanting to add their mark to the community?

Having moved to Edlesborough three years ago and now with two young children, Adeline & Scott have been enjoying all aspects of village life, but have longed for a place to enjoy a moment of calm with a cup of coffee, good food, and good friends. The couple own Weanie Beans, a speciality coffee roastery in North London, from where they supply an abundance of restaurants and cafes across the UK with coffee and their house made hot chocolates - but still, they wondered, what more can they bring to the community than great coffee?

With their knowledge and experience of cafe culture and their passion for raising a family in our picturesque neighbourhood, they have chosen to open Heirloom, the new village cafe in Edlesborough.



So, what is Heirloom? First and foremost, Heirloom is a variety of coffee from Ethiopia, from which all coffee stems from. Heirloom is also an old plant variety cultivated again and again, or a family possession handed down from generation to generation. The various definitions of Heirloom display the framework of the cafe; from developing a lasting business to their background in speciality coffee.

With the couple's strong advocacy for ethically sourced ingredients, Heirloom will showcase and support local producers, serve direct traded coffee, hand roasted at their roastery, and provide fresh seasonal food whilst being socially responsible.

Heirloom will be a hub for local residents and long travelled visitors alike. As the long evenings draw in, expect a selection of autumnal salads, warming soups, slow-cooked stews and other comforting homemade foods to keep you fuelled during the day. With extended opening hours, you'll be able to get your coffee before work, as well as enjoying a cosy cuppa in the evening before settling in on the sofa.

The impact of a local cafe goes beyond a quick coffee, a room to chat or a space to work. The couple are hoping to create a warm social hub for everyone, welcoming couples, individuals and families alike.



Eaton Bray Cricket Club 100 Club Winners October 2016

£25 R Stearn
£10 V Ball

Eaton Bray Cricket Club is kindly
sponsored by Meadow Marquees,
Houghton Insurance & Giblin Property.



Edlesborough Parish Council News

Including Edlesborough, Dagnall and Northall

Report It

Have an issue, complaint or feedback? Not sure where to report it. This handy guide will help.

<p>Edlesborough Parish Council clerk@edlesborough-pc.gov.uk 01525 229358 www.facebook.com/EDANParishCouncil</p> <ul style="list-style-type: none"> • Streetlights in Edlesborough, Dagnall & Northall • Edlesborough Cemetery • Edlesborough Green • Edlesborough Green Play Area • Grass cutting within the 30mph limit • Allotments 	<p>Bucks County Council http://www.buckscc.gov.uk/about-your-council/do-it-online/report-it/ 01296 395000/0845 3708090</p> <ul style="list-style-type: none"> • Potholes • Pavement problems/defects • Other highway issues such as road markings, road surface, bollards, etc. • Grass cutting outside the 30mph limit • Rights of Way
<p>AVDC https://www.aylesburyvaledc.gov.uk/ 01296 585858</p> <ul style="list-style-type: none"> • Missed bin collection • Fly tipping • Street names • Planning: applications, breaches, issues • Anti-social behaviour • Dog fouling or dog bin emptying • Safe Guarding Children • Dead Animals on the road side 	<p>Thames Valley Police Emergency – 999 Non-emergency – 101 http://www.thamesvalley.police.uk/contactus.htm</p> <p>Edlesborough, Dagnall and Northall are covered by Thames Valley Police should you need to contact the police please ensure you ask for TVP.</p> <ul style="list-style-type: none"> • Crime • Vandalism • Road safety including parking issues • Missing person

Thames Valley Police Report

PCSO Jackie Dodson attended the September EPC meeting and reported the following information:

- One theft of a vehicle in Edlesborough.
- One theft of a motorbike in Dagnall.
- One domestic dwelling burglary in Edlesborough.
- One incident of anti-social behaviour in Edlesborough.
- One Road Traffic Collision in Northall.

New Defibrillators

EPC can now confirm that thanks to donations from St Mary’s Village Carnival Committee and the Burghope Trust two new defibrillators have been installed in the Parish. This means that each village now has a defibrillator. These are located at Edlesborough Memorial Hall in Edlesborough, The Red Lion PH in Dagnall and The Swan PH in Northall. To access the unit please phone 999. You will be given the access code and the location of the box will be confirmed. The defibrillator is easy and safe to use.

Streetlights

If you notice a failed streetlight in Edlesborough, Dagnall and Northall please report this to the Clerk for repair. We are currently working hard to ensure all 143 streetlights are labelled with reporting information. When making a report please ensure you are as specific as possible about the location.



Edlesborough Green Roundabout

At the time of writing this report the roundabout on Edlesborough Green is still currently out of use. EPC have investigated and discussed both repair and replacement options at length and have agreed to further investigate giving the unit a major overhaul. EPC understands that many children are disappointed that the unit is still unusable however this is due to health and safety implications.



EPC hope to rectify this situation as soon as possible.

Benches on Edlesborough Green

Many of the benches on Edlesborough Green are donated by relatives in memory of loved ones.

Anyone wishing to sponsor the refurbishment of an existing bench should contact the Clerk to discuss the matter.

Neighbourhood Plan

Work continues on the Neighbourhood Plan, this plan is vital to help protect the parish against opportunistic developments until 2033. AVDC are in the process of getting their overall local plan approved. In that plan they have laid out the housing numbers required of the towns and villages in the district. More information is available in a separate article in this edition of Focus.

White Lines & Speed Roundels

EPC continue to press TfB for the promised repainting of the road markings and replacement of the cats eyes at the junctions of Ivinghoe Way, Peblemoor and the Leighton Road (A4146).

TfB have confirmed that a works order has been raised for the repainting of the 30mph roundels through Northall. If you notice any other road markings in need of repainting please report those to Bucks CC (see the information at the start of this article).

Think Before You Park

Parking in the Parish continues to be an issue EPC ask all drivers to **Think Before You Park**

Ask yourself:

- Does my parking prevent any of the following using the pavement:
 - A pedestrian
 - A wheelchair
 - A pushchair
- Does my parking block an emergency vehicles access?
- Does my parking damage the pavement or grass verge?
- Does my parking obstruct other road user's view?

If the answer to any of these questions is **YES** please find somewhere else to park.

Allotments

Edlesborough Parish Council currently has vacant allotments. Anyone wishing to take on an allotment should contact the Parish Clerk. Fees are £2 per pole and plots range in size from 5 – 20 poles.

Speedwatch

The EDaN Traffic Management team are looking for volunteers to help with their new Sentinel device. If you have an interest in slowing down traffic in the villages or are concerned about Road Safety, please contact Louise Turner on 01442 843123 or by email at louisefanthorpe@yahoo.co.uk.

Edlesborough Parish Council Meetings

The next Edlesborough Parish Council Meetings will take place as follows

Edlesborough Memorial Hall, Thursday 17th November 2016

Edlesborough Memorial Hall, Thursday 15th December 2016

The meetings will commence at 7:30pm.

All Parishioners are welcome to attend all Ordinary Parish Council meetings and may ask questions, raise issues and give suggestions during the Open Forum before the formal start of the meeting. The full minutes of the Parish Council meetings are normally available to view on the website or from the Parish Clerk.



Edlesborough Parish Council Contact Information:

Clerk: Penny Pataky 01525 229358 Office hours Mon – Fri 10.30am – 2.30pm (Excl. Wed)

Email: clerk@edlesborough-pc.gov.uk

Website: www.edlesborough-pc.gov.uk

Facebook: www.facebook.com/EDANParishCouncil



Since our launch the scheme has been running successfully and gathering momentum. In July and August volunteers were able to do 26 jobs for local residents and the number doubled in September.

The majority of services provided were transport, particularly to hospitals, doctors and dentists but we were also able to help out with gardening, dog-walking, visits to the library, moving small items of furniture and small household jobs, usually for people who were ill or recovering from medical treatment. In addition there have been several requests for befriending and we are looking at ways in which we can best develop this.

In September three members of the Committee attended the South Beds Village Care Schemes Local Network Meeting, where they were able to meet representatives from several other Good Neighbours groups and gain ideas and guidance from teams who have much more experience. It was an inspiring event which has given us useful pointers on the way forward.

St Mary the Virgin Eaton Bray: Toilet Twinning



In August a special coffee morning was organised in church to raise funds and twin our newly built toilet with another one to enable people living in poor communities to have clean water, basic toilet, and to learn about hygiene - a vital combination that

helps end generational poverty. 1 in 3 people worldwide don't have a toilet.

The result was stunning so the PCC decided to offer the funds raised for one of the toilets to each of the school in our parish: Eaton Bray Academy, Edlesborough School and Dagnall CoE School for them to be able to twin with a country of their choice. Contacts were made and on September 28th a full assembly at Eaton Bray Academy welcomed



The Eaton Bray Church toilet by John Hockey

the initiative. On October 5th followed Edlesborough KS2 children who were mesmerised and very thankful and Dagnall whole school who learnt the word "poverty". The children responded with excitement and keen interest to the fates of their peers in Africa when they saw the videos. They asked many pertinent questions underlying genuine generosity and sharing. They were made to reflect on the message: "Help flush away poverty", "Poverty stinks", "Wipe out poverty" for instance. They were given stickers and posters to keep as they reflected further with their teachers on the meaning of this twinning. Watch that space and do not forget that November 19th is World Toilet Day. It is also Eaton Bray Christmas Fayre in the Village hall, meet you all there.

✉ Catherine Wendeler

relax



let us
take care
of the sale or
rental of
your home



Christopher Pallet
Professional advice since 1973

Don't just take our word for it

"I have let properties through Christopher Pallet for over 10 years. I run the local pub and always refer people seeking to buy or rent to Colin and Linda because of the 1st class service I have experienced over the years. Their personal attention and "nothing is too much trouble" attitude makes them number one in my book."

Tom Dunnell

"My family wish to express our very grateful thanks for all your great help and consideration over the years letting and selling our properties"

Moller / Hawkins Family

"Thank you so much, I'll be sorry to lose you, you've restored my faith in Estate Agents. The nicest and most decent I have ever met. **** & **** estate agents need to take a training course from you !!

Fiona Newberry



Christopher Pallet
Professional advice since 1973

Zoopla
Smarter property search

rightmove
the UK's number one property site

Ombudsman
Services
Resolving Consumer Disputes

Call Linda or Colin on 01525 222333

ASPECT

YOUR LOCAL ELECTRICIAN
TOTTERNHOE
OVER 20 YEARS EXPERIENCE

ELECTRICAL

CONSUMER UNIT UPGRADES (FUSE BOARDS)
LIGHTING - INTERIOR, EXTERIOR & SECURITY
REWIRING
NEW INSTALLATIONS
TESTING & INSPECTION

ALL WORKS TO CURRENT WIRING & BUILDING REGULATIONS
PART P CERTIFICATED & FULLY INSURED



CALL STEVE ON
07976 283969 / 01582 665068
aspect@sparky.me



IRON OUT

Complete Laundry Service
Shirt Service
Duvet Cleaning
Ironing
Free collection & delivery from
home or office
01582 667332 / 07885 320042
Email: ironout@aol.com

Anne Johnson D.O.
Registered Osteopath

6 Moor End,
Eaton Bray

01525 221958
07957 250682



R.J.O'CONNELL BUILDING SERVICES

EXTENSIONS, PATIOS,
DRIVEWAYS, ROOF REPAIRS
AND PROFESSIONAL
DECORATING SERVICE

TEL: 01296 681323
MOB: 07855 236726

Will Kimberley Garden Services 01442 255784

Phone for a free no obligation written estimate
wkgardenservices@btconnect.com

- High hedges a speciality
- Fences erected and repaired
- General garden tidy up's
- In fact any job in the garden!

EXCEEDING EXPECTATIONS IS JUST PART OF OUR SERVICE



If you're **selling**, **letting** or **buying** a home, make it happen with your local estate agent



01525 220605 • info@giblinproperty.co.uk
www.giblinproperty.co.uk

THE WORKTOP SPECIALIST

DELIVERING OUTSTANDING QUALITY & SERVICE FOR ALL YOUR WORKTOP & JOINERY NEEDS FOR OVER 50 YEARS

- FREE HOME MEASURING SERVICE
- CUTTING & EDGING SERVICE AVAILABLE
- VISIT OUR BRAND NEW SHOWROOM

Abbey Gate, Boscombe Road,
Dunstable, Bedfordshire, LU5 4FA

Tel: 01582 668 973 Fax: 01582 608 227
Email: sales@dunstablelaminates.co.uk
Web: www.dunstablelaminates.co.uk



@DLaminates



Dunstable Laminates



Make a Will

AND LASTING POWERS OF ATTORNEY

YOU DECIDE who is to run your affairs, who gets what, guardians etc, not the State.

MINIMISE RISK of Inheritance Tax and the disinheritance of children.

Best Price Guarantee

from specialist Solicitors and professional Will Writers since 1999

FREE HOME VISIT

For a DAYTIME or EVENING appointment call

01525 220644

www.wisechoicewills.co.uk

MAKING A WILL
HAS NEVER
BEEN EASIER



Will Trusts
& Probate
Practice

A wise choice



**Café
masala**

Exquisite Indian Cuisine

We Cater for Office or Private Parties and don't forget to try our Sunday Buffet

10% Discount on all Takeaway Orders Over £12

Fully Licensed & Air Conditioned

Open Seven Days a Week

Hours: 12 Noon to 2.30pm & 6.00pm to 11.30pm

Tel: 01525 22 22 64

63 Bower Lane · Eaton Bray · Dunstable · Beds · LU6 1RB
email: taraque@hotmail.co.uk · www.cafemasala.com

alto window cleaning

For a professional service.....

- Window cleaning
- Conservatory cleaning
- Fascia & gutter cleaning

07876 594186

AARON FENCING

ALL TYPES OF DOMESTIC & COMMERCIAL FENCING & DECKING WORK UNDERTAKEN

FREE ESTIMATES
FULLY QUALIFIED & INSURED
PERSONAL SERVICE AT COMPETITIVE PRICES

TEL: 01582 665779
MOBILE: 07798 927272

7 STATION ROAD, DUNSTABLE, LU5 4HS

Buy Direct From Our Own Farm

Master Card

VISA

From Ivinghoe Turf

- Commercial & Domestic
- Small Orders Welcome
- Bark, Grass Seed & Fertiliser
- Laying Service
- Discount on Larger Orders
- Screened & Blended Topsoil
- All Year Availability
- Forklift Delivery Available



ROLAWN[®]
Approved Rolawn
Stockist

Family firm farming since 1949

ALL AREAS

Freephone :

0800 043 5061

www.ivinghoeturf.com

The Bungalow, Vicarage Farm, Ivinghoe, Leighton Buzzard

Established over 20 Years

Duncan Tomblin TREE SURGEON

Forestry Contractor • Tree Felling
Crown Reduction & Thinnings
Deadwooding • Hedge Cutting
Stump Grinding • Site Clearance
Private Agriculture Fencing Contractor
Chipper & Stump Grinding Hire
Digger Hire

FULL PUBLIC LIABILITY INSURANCE
FREE ESTIMATES

'The Best Choice For Your Tree'

TEL: (01525) 221946
MOBILE: (07802) 410728

12 Greenways, Eaton Bray, Beds

ARC Contract Services Ltd

- Painting & Decorating • Plastering
 - Wall & Floor Tiling • Door Hanging
 - Bathroom & Kitchen Installations
- 20 years experience

All work guaranteed and fully insured

Call Adrian : 01582 539179

Mobile : 07789730580



WESTROPE BROS.

LAWN MOWER SERVICES

ALL TYPES OF GARDEN MOWERS SERVICED

THE RYE, EATON BRAY

Tel: Eaton Bray 220587

Gas Boiler Servicing

Over 40 years experience

Have your boiler serviced by a **Gas Safe**
and **CORGI** registered engineer

Other services available:

Maintenance, repair and installation of all domestic gas appliances including LPG. Boiler installations, Landlord Safety Certificates and Power flushing.

Free Quotes, no call out fee, and free friendly advice on all of the above.

Edwards Gas & Heating Services

Eaton Bray



Tel 01525 220626

www.edwardsgasandheating.co.uk
stevethegas@orange.net



Vicky

The Dog Grooming Specialist
www.vickysdogcare.co.uk



With a reputation for offering an exceptional personal service



- Over 29 years of professional experience
- Trained at the London Academy of Professional Groomers to the highest City and Guilds standard
- Dorwest Veterinary Trained
- Member of the Pet Industry Federation
- Sympathetic and gentle handling of all dogs
- **FREE** Health check with every grooming session
- **No cages used! No cage dryers!**
- One to one personal attention.....loads of TLC

Where Dogs Come First!



Mobile: 07796 445416

Telephone: 01525 222775

Email: enquiries@vickysdogcare.co.uk



Committed to the highest standards of animal welfare and customer care

Over 30
Years
experience.
FREE
Quotes

Misty Double Glazing?

Over 30
Years
experience.
FREE
Quotes

**KEEP YOUR WINDOW FRAMES...
... WE JUST REPLACE THE GLASS!**

- UPVC • Aluminium • Or Wood

Because we replace just the glass the repair is a
Fraction of the cost of a complete replacement window.

BEFORE



AFTER



mistydoubleglazing.co.uk
QUALITY GLAZING SERVICES

01525 876808

WE ALSO REPLACE BROKEN...

- Glass • Handles • Hinges & Locks
- AND REPAIR...Patio Doors & Conservatories!**



Virtual administrative
support to businesses &
private individuals

Website hosting

Domain registration

Desktop publishing

01525 229695

Email:

enquiries@morenassociates.co.uk

www.morenassociates.co.uk

Absolutely Plastered

**DOMESTIC/COMMERCIAL,
CLEAN AND RELIABLE SERVICE,
FREE ESTIMATES, FRIENDLY ADVICE**



- * Plastering & Coving
- * Floor Screeding
- * Pebbledashing & Rendering
- * Dry Lining
- * Cornices & Mouldings
- * Insurance Work Undertaken

CALL NICK CONWAY ON

Mobile: 07751 830716

Tel: 01296 688981

6 Cotes Way, Wing, LU7 0RB

*HPC Registered
CHIROPODIST & PODIATRIST*



(Also Central Luton surgery - open 6 days)

*Stuart Ball
Ceramic Tiler
Specialist
at all aspects of
Wall & Floor Tiling
Over 33 yrs Experience
01525 229381*



Stephen D. Janes

(Established in 1982)

**CARPENTRY, JOINERY
KITCHENS FITTED
PROPERTY MAINTENANCE
TELEPHONE: 01525 220649**



01582 477568

07949 118011

**Fencing Panels • Blockpaving • Paths
Shingle Drives • Slabs • Paving
Steps • Gardenwalls • New Patios
Relaying • Soak Aways • Drainage
Free estimates or advice • References
www.gandjgroundwork.co.uk**

Neil Hodson Associates

*BUILDING DESIGN
STRUCTURAL ENGINEERING*

**PROFESSIONAL BUILDING DESIGN,
ADVISORY AND DRAWING SERVICES**

From plans for domestic extensions
to multi-storey offices, commercial
buildings and factories.

Structural surveys, site surveying,
advice on building defects and
Feasibility Studies

Planning Applications and Building
Regulation Consents obtained.

**24 HIGH ST TRING
Tel 01442 890894 OR
Edlesborough 222462**

J Able bathrooms

New Showroom NOW Open in Edlesborough

DESIGN

Free CAD design of your bathroom, This will help you a photo realistic finished plan of your design.

SUPPLY

Come and browse our display suites, This will help you decide on the perfect bathroom for your needs.

INSTALLATION

Our installations are of the highest standards!
We take pride in making you delighted with the finished result.

We have suites in a wide range of styles to suit your budget.
Drop in or ring to make an evening appointment at the showroom
or a home visit at your convenience.

Opening Times

Monday. 9am-5pm
Tuesday. 9am-1pm
Wednesday. Closed
Thursday. 9am-1pm
Friday. 9am-5pm
Saturday. 9am-1pm
Sunday. Closed

T: 01525 220043 M: 07891 449077

3 Summerleys, Edlesborough, Buckinghamshire, LU6 2HR
W: www.jablebathrooms.co.uk E: ableplumbing@hotmail.co.uk



EDLESBOURGH TENNIS CLUB

Website by Jupiterwill

www.etctennis.org

Play tennis Have fun Socialise Feel good Join our club

Join via the website, or call Iona McLean-Hall on 01525 220562 for details

Eaton Bray W.I.

theWI
INSPIRING WOMEN

At our October meeting we welcomed Wendy Austin who gave us an extremely interesting, illustrated talk on Ashridge

House and the part the Brownlow family played in the Estate. Starting life as a monastery in 1283, Ashridge House was saved during the Dissolution of the Monasteries by Henry VIII. He favoured the area as a hunting ground. Ashridge House was bequeathed to Elizabeth I and eventually purchased by Sir Thomas Egerton. Various cousins inherited the Estate down the centuries, culminating in the Brownlow family headed by 1st Earl Brownlow inheriting the Estate in the 19th century. In 1928 Urdan Boughton bought the house and presented it to the Conservative Party when it became the Andrew Bonar Law College. The Management College has now been taken over by an American Corporation. The talk was followed by the notices. Several sympathy cards had been received from

other WI's since we had lost our dear friend and member Dorothy Bradbury. She will be greatly missed by Eaton Bray WI.

The Christmas Appeal would be to Emmaus this year, as well as the usual Salvation Army donations.

Members will vote for Resolutions on 30 November, for those to be presented at the 2017 AGM.

The next meeting of Eaton Bray WI will be on Monday 7th November when Graham Harrison will talk on Poisons for Medicine.

Meetings are always the first Monday of the month (except Bank Holiday when it is the second Monday). The Meetings commence at 7.30 pm and are held in Eaton Bray Methodist Hall. The contact for Eaton Bray WI is: Margaret Jones, on 01525 220991.

A warm and friendly welcome awaits new members. At each meeting there is an interesting speaker or demonstration, followed by social time and refreshments.

✍️Pamela

Macmillan Coffee Morning

**WE ARE
MACMILLAN.
CANCER SUPPORT**

Sue and David Cawdell would like to thank everyone who supported their Macmillan coffee morning on Friday 30th September 2016.

The magnificent sum of £538.00 was raised.

ILLUSTRIA

Kennels & Kathotel

Offering your pet a fully licensed Dog and Cat boarding service.

Purpose built Dog kennels

Individual Cat chalets with outdoor exercise runs

All in pleasant country surroundings

01582 ~ 665343



ILLUSTRIA
Springfield Road
Wellhead
NR Dunstable Beds
LU6 2JT



Proprietors

Mick, Denise and Michele Garrod



Live a healthy & active life

Free 10 minute advice chats with our Chartered Physiotherapists & HCPC Registered Podiatrists

PHYSIOTHERAPY
PODIATRY &
CHIROPODY
PILATES
ACUPUNCTURE
SPORTS INJURIES
MASSAGE
WOMEN'S HEALTH
& PREGNANCY
CARE

St. Judes

physiotherapy, health and well being

01525

377751

enquiries@stjudesclinic.com
www.stjudesclinic.com

N.D.S.

General Building & Plumbing
(25 years experience)

- Roofing; Installer of UPVC guttering, soffits & fascia boards
- Kitchens & Bathrooms fitted
- Property Maintenance
- Fencing • Patios & Block Paving
- Gazebos • Garden Structures

Tel: 01525 221470

Mobile: 07946 626564

FREE ESTIMATES

...

**ALL WORK CONSIDERED
NO JOB TOO SMALL**

For a top quality
decorating job call

Marc Flack

01525 223166

Trading locally for 10 years
References are available



TIME TO MOVE?

**Don't be alarmed,
we're here to help!**

Established in 1999

e: info@plummproperty.co.uk

Five Good Reasons to use **Plumm Property**

Private Offices - direct savings to you on fees

Local Knowledge - from our highly experienced team

Unrestrictive contracts - no lengthy tie-in periods

Marketing to outside area - attracting London buyers

Managing all your needs with a 1st class professional service

From Offer through to Completion of Sale



01296 660230

www.plummproperty.co.uk

2016 New Year's Eve Dinner Dance

at

Bellows Mill

Eaton Bray
LU6 1QZ

Ticket: £55 (profits to charity)
8.00pm for 8.30pm until 1am
Bring your own drinks. Pay Bar
Glass of Champagne at midnight.

Ragtime and Bluegrass
with Keith on Banjo
8pm

Three course dinner and
cheeseboard
8.30pm

Louise on vocals.
Website: www.alivenetwork.com

Dancing
10pm to 1.00am

For tickets email: rachael@bellowsmill.co.uk, or Tel: **01525 220548**
stating any food allergies or vegetarian if required.

Dress to impress/Black Tie

www.bellowsmill.co.uk

Adults only



THE BEDFORDSHIRE AREA GROUP OF THE ASSOCIATION OF
16MM NARROW GAUGE MODELLERS PRESENTS

STEAM IN BEDS "2016"

LARGE SCALE NARROW GAUGE MODEL RAILWAY SHOW

FEATURING NARROW GAUGE LAYOUTS RUNNING 16MM LIVE
STEAM LOCOMOTIVES WITH FULL TRADE SUPPORT FROM
SPECIALIST SUPPLIERS

SATURDAY 26 NOVEMBER
10.00AM TO 4.30PM - ADULTS £5.00
ACCOMPANIED CHILDREN UNDER 16 FREE

VENUE

EATON BRAY VILLAGE HALL AND
ST MARY'S CHURCH
CHURCH LANE, EATON BRAY, NR. DUNSTABLE, LU6 2DJ

REFRESHMENTS AVAILABLE ALL DAY

FOR FULL DETAILS SEE OUR WEB SITE: WWW.BAG16MM.ORG.UK

NORTHALL VILLAGE HALL needs more willing hands!

People to help with occasional projects such as
decorating, tidying the grounds and one-off
projects as and when they occur.

It's fun and rewarding when a band of
volunteers come together to pool resources -
we know as we've been doing it for many years!
We are now reaching out for more people to
volunteer alongside us. A little of your time once
in a while will help keep the Hall - a *Village Asset* -
open and running effectively for all of Northall to
enjoy. If you can offer any kind of help please
do get in touch; we'd love to hear from you.

Email us at: northallevents@hotmail.com
or contact [Kevin Cabbage](tel:01525220361) on 01525 220361

*Northall Village Hall
Management Committee*

BEAVERS⁺ cubs⁺ SCOUTS⁺

A few hours of your time can make years of difference...

1st Totternhoe Scout Group
is looking for adult
volunteers to help with:

- Cub Pack Nights
(Wednesday and Thursdays in
term time)
- Admin support

Contact:
Becky
Group Scout Leader

totternhoescouts@gmail.com

Or 07598330636



New Methodist Minister...

Let me Introduce Myself



Dear Friends,

By the time you read this I will be moving into my third month as minister at Eaton Bray and Edlesborough Methodist Churches and Methodist minister at All Saints' Dagnall.

As a family (that's myself, Elisabeth my wife and Jonathan our son) we are delighted to find ourselves in this beautiful part of the country and serving among you (though we live in Toddington).

Thomas Hood's beautifully descriptive but rather disheartening poem 'November in England' ends like this

"No shade, no shine, no butterflies, no bees,
No fruits, no flowers, no leaves, no birds – November!"

My step mother however loves November because, as she says, there is not much more she can do in the garden and so she can come into the warmth and snuggle down with a good book or some sewing. In addition, of course, it is the important month of Remembrance as well as fireworks and bonfires!

I find it difficult to share her enthusiasm and can find November a difficult month as the days shorten and winter's chill begins to set in.

Sadly there are many things that could 'get us down' – war and its human consequences as so many are killed or flee for their lives, injustice, poverty, hunger, crime, dishonesty, greed, and a world in which standards seem to have been swept aside – in which many individuals seem to think that they can simply do as they like without regard for others. However, not all is gloom and doom. God, our creator has placed us in a wonderful, beautiful world filled with everything necessary for human happiness and flourishing, for all his children.

God, in Christ, has given us a glimpse of what can be – a world filled with love, beauty, mercy and peace and through the power of his risen son, Jesus, we shall build God's Kingdom here.

With these thoughts in mind perhaps we could add a stanza to Thomas Hood's poem to reveal the world that can and will be:-

No fear, no foe, No tear, no woe,

No hate, no war,

No starvation any more,

No use for guns or prison cell

No lack of love, no addicts hell,

No need for drugs or needle's scar.

No selfish pride, no colour bar,

No cry for help, no lonely death,

No shop door beds, no wino's breath.

No refugee nor lack of care,

No poverty for all will share,

No silent church nor empty pew,

For God's sure promise – will come true

One November.

As November closes we begin to look forward to the fulfilment of God's promise on Advent Sunday as we learn again to wait for the coming of the light of Christ among us – Emmanuel, God with us.

Have a peaceful and grace-filled November.

God bless,

✍️ Nigel

CHARLES HILL

GARDEN SERVICES LTD
DESIGN | BUILD | MAINTAIN

LANDSCAPE CONTRACTORS

NCH Horticulture
City & Guilds Garden Design

A professional company working with all your garden requirements from design to complete landscape.

01525 242065

07773723236

www.charleshillgardenservices.co.uk
www.allyearroundbbq.co.uk

D Scott and Sons

Home Services Limited



Plumbing and Heating Specialists

- Boiler repair
- Boiler installations
- Powerflushing
- Annual servicing
- Landlords certificate
- Magnetic system filters
- Radiator valves
- Oil central heating

Other services...

We offer a full range of plumbing services including

full bathroom refits, showers, sinks, taps, traps & drainage and kitchen appliance installations.

www.dscottandsons.com

24/7
Call Out

contact us now on

01525 791563

07921 670437



Cheekatrade.com

ADRIENNE'S PRIVATE HIRE

Call for a FREE quotation
Book early to avoid disappointment
Very competitive prices

Airport Transfers
& Private Hire

07980 039715

Our executive Cars, 6 seater Minibuses and lady driver are all available

INFO@HOTACADEMY.CO.UK

'WICKED'
SUMMER
WORKSHOP

WEEKLY
CLASSES

HOT ACADEMY

FOR AGES 3-18YRS IN DUNSTABLE

STAGE COMBAT

ACTING

WEST END TUTORS

DANCING

SINGING

BOOK NOW!

07886 385799

LIMITED PLACES!

GRASS ROOTS GARDEN MAINTENANCE

TREE SURGERY, HEDGE PRUNING,
SELECTION SUPPLY AND PLANTING OF
TREES, SHRUBS AND HEDGES.
REGULAR MAINTENANCE/ONE-OFF JOBS
(Fully Insured)

Brian McMahon NCH (Arb)

01525 221960



Edlesborough Flowers

Flowers, Gifts, Jewellery
& More...

2 High Street,
Edlesborough,
LU6 2HS

Tel: 01525 221920

Community Carol Service

at the Village Hall, Eaton Bray

Sunday 27 November

4pm

Tickets: £1 each

(required for health and safety reasons because of last year's success)

Available from Hilary Chadwick (Envoy)

07932 057490;

hilary.chadwick@salvationarmy.org.uk

Featuring:

**School Choir, Community Band,
Children's Nativity**

Super Star

Proceeds from the evening to:



The Salvation Army :

A Church & Registered Charity

259322



Dagnall Christmas Bingo

Festive Bingo
in memory of Basil Thorne

Wednesday 30 November

7.30pm for 8pm start

Dagnall Village Hall

Bring Your Own Party Food for the buffet
(Please bring a plate of sweet or savoury
or drink of your choice) Raffle

Any enquiries please phone

Sheila on 01442 842404

or Helen on 07825 778930

Proceeds to Dagnall Village Hall

Christmas Coffee Morning

Saturday 26th
November
10.30am - 12.30pm

All Saints Church
Dagnall

All Welcome to visit to
buy cakes, cards and gifts
and meet new people

WE CELEBRATE

WE ARE
MACMILLAN.
CANCER SUPPORT



CARITAS CHRISTMAS SPECTACULAR

11 DECEMBER 6PM. St Mary's R.C. Church,
West St, Dunstable LU6 1NY. Christmas
Concert by award-winning Caritas
Harmony with songs by Hadrian Academy
Children's Choir. Refreshments available
from 5pm

Tickets £8 under 12s free. For on-line tickets and more
information visit www.caritasharmony.co.uk or call
Jackie Howe 01582 599520. All welcome!



CARITAS
HARMONY
LUTON, LARKS & SHELL
Luton is a town in Bedfordshire

Music at St Mary's

POPPY PROM

12 November, 7.30pm

St Mary's, Eaton Bray

A celebration of 'Remembrance' and
'The Last Night of the Proms'

featuring: Dagnall Community Choir, St Mary's Choir,
South Beds Concert Band, plus soloists Min-Min
Peaker and Cheryl Hawkins



Box Office: 01525 222283

Tickets (£12.50 & £10) will go fast so hurry to book
your seats!

Christmas 2016 in Dagnall

Friday 2nd December

Father Christmas around
the Village, 6.30pm

Father Christmas Switches on
the Village Hall Lights, 7.30pm



Other Christmas Events in Dagnall

Christmas coffee morning at the church
Saturday 26th November - 10.30am

Christmas Bingo, Weds 2nd December - 7.30pm

Christmas Fair, Saturday 3rd December - 1pm

Dagnall Children's Party
Sunday 4th December (Dagnall children only)

Carol Concert, Sunday 11th December - 2:30pm

Dagnall Over 60s Party (Members only)
Tuesday 13th December - 1.30pm

Best decorated house competition
Saturday 17th December

Carol service at the church
Sunday 18th December - 3pm

St Mary's Christmas Fair

Saturday 19 November 2016, 12.00 - 3.00pm

Eaton Bray Village Hall

50p admission adults

Children free!

Come and visit

Santa and Mrs Claus

with their elves in their
Christmas grotto at this
year's Christmas Fair!

With lots of other stalls to browse for your Christmas presents, or just to treat yourself! Delicious bacon butties and other refreshments on sale all afternoon.

For more information, or to book a stall, please ring 01525 852368.



Come for Coffee at St Mary's

For a warm welcome and
a cheering cuppa
each month in
St Mary's Church
Eaton Bray
10.30am - midday

Next Coffee Mornings:
Saturday 5th November
Saturday 3rd December



THE FILLING STATION

A relaxed, informal way of expressing the Christian faith. Using mid-week monthly meetings the Filling Station has a particular focus on rural communities and we find that the local church is strengthened and helped in many ways. We provide refreshments, authentic worship from guest worship leaders, keynote speakers and a relaxed social atmosphere. Everyone is welcome. Do come and bring your friends.

4th Tuesday of each month at 7.30 p.m.

Bellows Mill, Eaton Bray, Dunstable, Beds. LU6 1QZ

Speakers:

22nd November Ruth Paddon, Forerunners International UK. Ruth is sure to bring an encouraging Biblical 'word' relevant for us.

No meeting in December

24th January: Anne de Leyser, Ffald-y-Brenin. Local Houses of Prayer.

Local contact: Diane 07815 895501

To find out more visit www.thefillingstation.org.uk

**THE
FILLING
STATION**



www.ccchimps.com

Kelly 07811 797890

KellyC@ccchimps.com



**Chimps Dunstable –
Leighton Buzzard**

Tweet us @ChaCharChimps

PRE-SCHOOL *with Kelly* ENTERTAINMENT SHOW

Award-winning musical fun with puppets & props!

Delicious cakes and drinks included!

From £3.50 & pay-as-you-go or PayPal on website



**Eaton Bray Village Hall
Church Lane, Eaton Bray
Dunstable, LU6 2DJ
Mondays 10:30-11:30am**

**Stanbridge & Tilsworth
Community Hall, Stanbridge Rd
Tilsworth LU7 9PN
Thursdays 10-11am**

LOCAL HERALDRY

In this new series, John Hockey takes a look at local heraldry and attempts to explain the meaning of the various symbols found.

If you have ever been in a church with monuments, or a pub called the Red Lion (or better still the Bridgewater Arms), then you have embraced heraldry directly!

To me the world of heraldry is fascinating and I am grateful to be able to share some of it with you. Where better to start than the church on the hill in Edlesborough?

KEMPE'S WHEATSHEAF

In the lower left hand corner of a stained glass window on the south wall of St Mary's church, Edlesborough, there is a small golden wheatsheaf or 'garb' tucked away almost out of view. This was the trademark of Victorian stained glass designer Charles Eamer* Kempe (1837 – 1907). Many craftsmen chose a symbol that had some meaning to them as their signature and in this case, the wheatsheaf



Kempe's coat of arms

relates directly to his own shield and is intimately linked to his family's status and his place in society – a very personal signature.

You may sometimes see a black tower accompanying the golden wheatsheaf and this relates to Walter Towers who was a cousin of Kempe and became chairman of the company of C E Kempe & Co., after Charles' death in 1907.

*Eamer was Charles Kempe's mother's maiden name

Next month: The Bray family

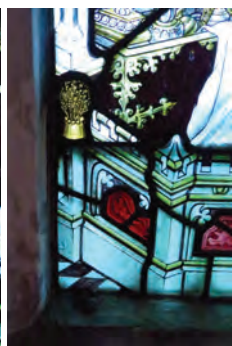
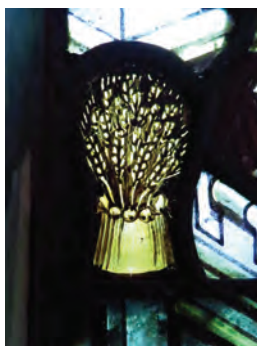


The arms from a book published in 1905

was taken directly from Kempe's personal coat of arms.

Heraldic descriptions can seem complicated but they're not really. The full blazon or description of Kempe's shield from which the wheatsheaf is taken is as follows:

Gules, three garbs Or, on a bordure engrailed of the second, eight hurts. i.e. the background is red (Gules), the wheatsheafs are golden (Or) and on a spiky (engrailed) gold border there are eight blue roundels (hurts). So the inconspicuous wheatsheaf



Kempe's wheatsheaf at St. Mary's Edlesborough

Roy Dean

Doreen Dean wishes to thank all friends and neighbours for their kindness and help, their cards and telephone calls following the death of her husband Roy. Her will be remembered with great affection.



All Saints' Church, Dagnall Services in November 2016

Sun. 6th Nov	10.30 am	United Service for the Festival of all Saints
Sun. 13th Nov	10.30 am	Morning Service
Sun. 20th Nov.	10.30 am	Family Communion
Sun. 27th Nov	10.30 am	Family Service
Sun. 4th Dec.	9.00 am	Eucharist
	10.30 am	Morning Service



Sunday School meets each Sunday at 10.30 am except when there is a Family Service.

Val Wood
1958-2006

For Val
Stardust...

And now the purple dusk of twilight time
Steals across the meadows of my heart
High up in the sky the little stars climb
Always reminding me that we're apart

'Carols by Candlelight'



Saturday 17th December @ 3.00 p.m.

Join us – for a feast of carols, mince pies and mulled wine at our magnificent
Church on the Hill, Edlesborough



**LUTON &
DUNSTABLE
HOSPITAL**
CHARITABLE FUND

Light up a Life this Christmas

The Luton and Dunstable Hospital invites you to join in with their *Light up a Life* campaign this Christmas!

You can buy a Light on our Christmas Tree as a gift for someone special or you can dedicate a Light in memory of a loved one. All proceeds will benefit the Neonatal Intensive Care Unit Parents' Accommodation; which will provide a home from home for those parents' who want to stay at the hospital overnight so they can be near their baby.

Lights are just £5 each or 3 for £10. If you buy a light as a gift for someone, they will receive a card with your special personal message and if you buy one in memory of a loved one, you will receive a letter of dedication.

The giant tree will twinkle proudly outside the hospital for everyone to see. Lights can be purchased any time up until Christmas and will be put on the tree, but the switching on ceremony will be on Thursday 1st of December at 6pm at the front of the hospital where there will be festive music provided by the Hadrian Academy school choir, and refreshments in the warm afterwards... everyone is welcome!

To buy your *Lights* please call the Fundraising Team on **01582 718 289** or visit www.ldh.nhs.uk/fundraising and download a form.



September was a special month for the Edlesborough WI because we had two events. The first was a coach outing to the annual RHS Gardens and Flower Show at Wisley, near Woking in Surrey, where we were able to admire the Royal Horticultural Society's spectacular grounds and the National Dahlia Show, which included the viewing of the 100 flower exhibits, 55 nurseries and 21 tradestands, selling a wide spectrum of plants and gardening products. There was also an interesting sculpture display exhibited by the Surrey Sculpture Society. The grounds were once part of the 60 acre Wisley estate which was given to the RHS in 1903 and these 60 acres have changed and been developed enormously since then. The aim of the RHS and Wisley is "To enrich everyone's life through plants and make the UK a greener and more beautiful place". One of the RHS's famous campaigns is the 'Britain in Bloom'.

The second event was our meeting which was held in the Memorial Hall on 13th September, when Lynn Grocock from the All Saints Apiary, Leighton Buzzard, spoke about honey bees and the apiary. It was six years to the day of our WI Meeting that Lynn first attended a course organised by the BBKA (Bedfordshire Bee Keepers Association) which she found to be very good and led to an amazing hobby. Lynn thought she had solved the problem of where to keep her bee hives; in her garden, which was once a quarry. However, the BBKA pointed out to Lynn that this was not a good idea for the bees and so she had to look elsewhere for a suitable home and this she found in the churchyard of All Saints Church, Leighton Buzzard, having asked for permission. Consequently, eleven

people joined Lynn in becoming interested in keeping bees in the churchyard and they became known as the 'Bee Team' and they spent the following year raising funds, attending BBKA courses and digging/tidying the grounds. Lynn also found it invaluable that the 'Bee Team' had a mentor from the BBKA giving them guidance and support during that initial first year. Lynn's enthusiasm for her bees shone out during her talk which included the history of bee keeping and numerous 'bee' facts. Monies raised from the All Saints Apiary are donated to the All Saints coffee shop, "Bees in Africa" and "Bees in Research".

✍️ Jackie Flint

Brass Band Instrument Players

Wanted



The Salvation Army in Eaton Bray is to hold a Community Carol Concert in Eaton Bray Village Hall on Sunday 27 November. It is hoped that a

Community Brass Band

can be formed to take part in the concert.

The initial performance will be quite simple and not overly demanding but our hope is that the band will develop and become a regular feature in the community. No religious connections are required. Everyone welcome whatever age or ability.

If you are interested please contact :

Brian Knightley on 01582 514729;
brianknightley@hotmail.co.uk or

Hilary Chadwick (Envoy) on 07932 057490; 01525 222087
hilary.chadwick@salvationarmy.org.uk

Make your house a home with blinds and awnings from

**VANSAR
BLINDS**



www.vansarblinds.co.uk

- Free No Obligation Measuring And Quotations
- All Blinds Made To Measure
- Choose In The Comfort Of Your Own Home Or Workplace
- Family Run Business
- Large Range Of Quality, Affordable Fabrics And Colours To Choose From



Call: 01525 220477 or 01582 699565 E: sales@vansarblinds.co.uk

Financially Prudent (IFA) Ltd

23 The Green, Edlesborough, LU6 2JF

Your local IFA for impartial Personal or Corporate advice on:

- Mortgages
- Pensions & Annuities
- Insurance
- Savings & Investments

Call Paul Pearce on 01525 220480 or email paul@finpru.com for a no obligation initial discussion



Financially Prudent (IFA) Ltd is authorised and regulated by the Financial Conduct Authority

J.G.S. Metalwork & Son

**Specialists in Gates
& Gate Automation**

Access Control • Security Grilles • Railings
Balconies • Stairwells

www.jgsmetalwork.co.uk

Call in to discuss your ideas

High Street, Edlesborough LU6 2HS

Tel: 01525 220360 Fax: 01525 222786

Spinney Landscapes
& Gardening Services

All Aspects of Grounds Maintenance

Weed Control • Driveways & Patios
Lawn Care & Scarifying • Fencing
Turving • Tree Work
Snow Cleaning & Gritting

Tel: 01582 872084 Mob: 07876 500292

Email: chambo.1628@btinternet.com

Dagnall Church of England School



A Buckinghamshire co-educational school

For 4-7 year olds



Dagnall Church of England School offers small classes, an exciting curriculum, excellent care and good links with the local community



Ofsted 2011
"Pupils are confident,
very happy at school
and curious to learn."



Tel: 01442 842473
www.dagnall.bucks.sch.uk



E-mail:
office@dagnall.bucks.sch.uk



David Brown

Window Cleaning

Quality Reliable Service.

Regular, Occasional or
Single Visits.

Friendly Free Estimates.

Facias, Guttering & Conservatories.

External Cleaning & Maintenance.

Fully Insured.

Phone 01582 472113

Mobile 07534 837073

D & E HINES

High-Class Butchers

Quality Beef, Pork & Lamb

Grade A Poultry

BBQ & Sausage Speciality

Renowned for 'Bunkers Sausages'

Telephone: 01525 220413

98 High Street, Eaton Bray



GENERALMECHANICALSERVICESLTD

VEHICLE SERVICING AND REPAIRS



**MOTs • MOT REPAIRS • SERVICING
DIAGNOSTICS • TRACKING • AIR CONDITIONING
TYRES • CAMBELTS • COLLECTION & DELIVERY
WELDING & FABRICATION • BATTERIES**

All vehicles - all mechanical work!

1 HONEYWICK LANE, EATON BRAY, LU6 2BJ

reception@general-mechanical-services.co.uk

www.general-mechanical-services.co.uk



01525 222876



Peace of mind for motorists.



Protecting what's important

MJ Security Systems Ltd

MJ Security Systems

Contact Us For More Information

Unit 4, Arianne Business Centre,
Blackburn Road,
Townsend Industrial Estate,
Houghton Regis,
Bedfordshire,
LU5 5DZ

Please call for a free quotation

T: 0800 0856126

E: info@mjsecurity.co.uk

W: www.mjsecurity.co.uk



We also specialise in:

- IP Cameras
- Intruder Alarms
- Access Control
- CCTV & Monitoring
- Door Entry
- Covert Cameras
- Security Lighting



FROM ONLY
£439.95+VAT
Products and
Installation



Kit includes:

1 x Wireless Door Contact, 2 x Wireless
P.I.R., 1 x Wireless Sounder, 2 x Remote Set
and Unset Fobs.

Stylish • Wireless • Secure

M . P . S

Maintenance & Property Services

- KITCHENS AND BATHROOMS
- PAINTING AND DECORATING
- PROPERTY RENOVATIONS
- PLASTERBOARDING
- FENCING

FREE ESTIMATES
NO CALL OUT CHARGE
NO JOB TO SMALL
LOCAL

Contact:- Julian

07958 306301

E-mail – mps@mustoe.co.uk
www.mustoe.co.uk

Leighton Aerials

Established 1970

For all your aerial
and satellite needs
call Colin on

01525 374742



Edlesborough School & Pre-School



Pupils' behaviour is outstanding...

The environment for learning is exciting and stimulating...

A real strength of the school is pupils' attitude to their learning .

Ofsted 2013

For more information about our School, Pre-School and Before and After School facilities, visit our website at www.edlesborough.bucks.sch.uk

Please contact the school on 01525 220431 to arrange a visit.

S M Reilly & Son Ltd

General Builders & Contractors



Turning Your House into
a Home Since 1987

All aspects of the building trade undertaken

- *Extensions*Hard Landscaping*
- *Windows, Doors & Conservatories*
- *Fitting of Aluminium Bi-fold Doors*
- *Kitchen & Bathrooms*Drives*
- *Loft Conversions*

01525 221740 07970 637511



JAMES FALCON-CROSS

LANDSCAPING AND OUTDOOR LIVING DESIGN

**ALL ASPECTS OF LANDSCAPING
UNDERTAKEN INCLUDING
FENCING, TURFING AND PATIOS
TIMBER STRUCTURES
DESIGNED AND BUILT**

VEGETABLE AND HERB GARDENS

01442 843258 / 07769 901325

ONECROSSFALCON@GMAIL.COM

eww

E W Wallace & Co
Chartered Accountants
Tax Consultants
Business Advisors

Small business specialists serving
Beds, Bucks & Herts

- Annual accounts
- Tax returns
- Self-employed
- Limited companies
- Small business specialist
- Sage Accounts expertise
- Prompt, personal service
- Value-for-money fees
- Free initial consultation

01525 220826

www.ewwallace.co.uk

Eaton Bray Village Hall



- ❖ Equipped to support theatrical productions and film shows
- ❖ Large car park
- ❖ Large Kitchen with a six ring cooker, large refrigerator, hot trolley, crockery etc.
- ❖ 3 separate areas to hire to meet your needs and budget
- ❖ For more information and brochure please ring Norman on 07975 797202

- ❖ Superb venue for weddings
- ❖ Fantastic place for parties and dances
- ❖ A must for children's parties, can fit the bouncy castle inside if weather dictates!!!
- ❖ Keep fit groups
- ❖ Ideal for Club meetings or functions



WAGGING

wonderful dog grooming

Here to take care of your mucky pup!

Your local dog grooming service in Eaton Bray

1-2-1 care for your dog

NO cages!

07580 343396

www.waggingwonderful.co.uk

info@waggingwonderful.co.uk

James B Chadburn FBHI

Fine Antique clocks & Barometers

Specialist in repairs & restorations.

Valuations & clock finding service.

Advice & assistance on formation & disposal of private clock collections.

Quality clocks/barometers Bought & sold.



Telephone 01525 221165

Mobile 07790 000629

E-mail: info@jameschadburn.com

NG AUTOS



MAKING YOU AND YOUR CAR HAPPY

CAM BELTS • MOT'S • MOT REPAIRS • HEAD GASKETS
AIR CONDITIONING • RECOVERY/BREAKDOWN
DIAGNOSTICS SERVICING • BRAKES • SUSPENSION
CLUTCHES • GEARBOXES • TYRES • WHEEL BALANCING
WHEEL ALIGNMENT COLLECTION & DELIVERY

CALL NICK OR GARY

01525 220850 OR 07972 198615

SPARROW HALL FARM, LEIGHTON ROAD,
EDLESBOROUGH LU6 2ES



Reception



Service Bays



MOT Station

D.A. Windows Doors & Conservatories

23 Church Lane, Eaton Bray, LU6 2 DJ

Tel: 01525 221051 Mobile: 07807 798387
email: mimcavinder@hotmail.com

AUTHORISED
SWISH INSTALLER
WITH OVER 20
YEARS
EXPERIENCE

Installation of PVCu windows, doors and conservatories
Replacement glass units and window maintenance

QUALITY PRODUCTS - QUALITY WORKMANSHIP -
REASONABLE PRICES



General building
maintenance work
also undertaken
including:
Facades and Soffits
Gutters
Fencing

Accredited Member of the
Incorporation of Plastic
Window Fabricators and
Installers Limited



The Gentleman Gardener

Let your local RHS qualified gardener make your garden beautiful, from simple garden maintenance to total redesign of your garden.

Please call Barry on
01525-222451 or
07541196384

to pop round for a free chat.



C H BUILDERS

cwhawkes@tiscali.co.uk

Tel: 07989 357231

Local builder with over 35 years experience in the trade, specialising in:

- Kitchen fitting and alterations
- Extensions
- Loft conversions
- Renovations

Recommendations available

Please contact Chris to discuss any requirements for a free quotation

McTimoney CHIROPRACTIC



Margie Craib BSc BHSI DC AMC MMCA
Human and Animal Treatments

Ashridge Farm, Ringshall, Berkhamsted, Herts HP4 1ND
Telephone: (01442) 842729

General Chiropractic Council Registration No. 293

CHIMNEY SWEEP

Local & Est. Brush n Vac
Friendly, Clean and Efficient

Call **KEVIN HING** on

Tel: 01525 371592

Mob: 07940 528897

www.khing.co.uk

Member of NACS

Northall & District Age Concern Wednesday Club Committee and Members would like to thank all the businesses who supported us with donations for the Harvest Auction 2016.

We also want to thank all the individual donors and generous bidders who contributed to the event.

TOGETHER WE RAISED **£2390** THANK YOU ALL.

Ashridge Golf Club
 Café Masala
 Claire & Keith, Giblin Estate Agent
 Eaton Bray Nurseries (Garden Scene)
 Eaton Bray Shop
 Edlesborough Flowers
 Edlesborough Post Office
 Flicks & Bangs
 Grove Lock
 Happy Valley
 Hines Butchers
 Home Farm, Northall
 Janes
 Kate Meridith, Revive
 Majestic Wine, L/B
 Marbled Meats of Northall
 Mead Open Farm

NG Autos
 smartAUTOGROUP
 Waitrose Supermarket
 Silver Arrow Archery
 NMJ Service Centre
 Yokohama Tyres
 Old Bank House Dental Practice, L/B
 Thai Traditional Massage for Ladies
 Swan Pub, Northall
 St Judes Clinic, L/B
 Tring Brewery Co
 Millbrook Golf Club
 Travellers Rest
 Westrope Bros
 Sleepytree Photography
 The White Horse
 Patricia's Cuisine

Edlesbray Leisure Fellowship (ELF)

Hello Everyone,

The year is passing very quickly, blossoms are fading but the recent good weather has helped to provide beautiful colours. Autumn will soon be here and hopefully it will bring us more gorgeous colours.

The lunch out at The Ship Inn, Leighton Buzzard on September 22nd was well attended and all those present enjoyed the venue and meal.

Unfortunately, the planned visit to The Gaydon Motor Museum did not take place and was a disappointment for the members who would have liked to have gone.

Brian F. led the walk, in fine weather on September 26th. The group started from The Wyevale Garden Centre in Great Gaddesden and walked along the Gade Valley, then through woods to Potten End passing Boxted Farm and

crossing fields towards St Margarets to return to the start. The distance covered was 4½ miles and the group enjoyed refreshments at the end. Thanks go to Brian F for arranging the walk. They would be very pleased to see more people joining them, especially women. The walkers meet at Eaton Bray Church at 09.30 on the 4th Monday in the Month. The walks are usually fairly easy and at a leisurely pace between 3½ and 4½ miles.

Arrangements are well in hand for our visit to Milton Keynes Museum on October 20th. Please come to our meeting at the Coffee Tavern on November 24th for refreshments and join in the leisurely conversations and discussions on our future proposed outings. All are welcome.

NOVEMBER DATES

Thu. 24th Coffee Tavern Meeting 10.30
 Mon 28th Walk from Eaton Bray Church 9.30

Are laptops damaging your health?



Although they offer versatility and portability they are not designed for long-term static use.

As far back as 2005 laptops outsold desktops and this had led to a huge increase in posture related back pain and repetitive strain injuries.

The human head is very heavy – balanced evenly between the shoulders is its ideal position. However, by using laptops we tend to position our ears in front of our shoulders which equates to holding a weight out at arm's length. This in turn increases the load through the spine and causes neck, upper back and arm problems.

There are some ways that you can minimise the risks associated with laptops:

1. Make sure your laptop is on a stable base and not on your lap.
2. Sit up straight with your lower back supported, not slouched on the sofa!
3. Avoid upper body strain by taking regular breaks from the screen.
4. Use a separate keyboard and mouse so that the laptop can be put on a stand and the screen opened at eye level.
5. For long-term working, use your laptop with a separate monitor and keyboard.

If you would like further advice on home or workplace assessments give St Judes a call.

Tips by Moira D'Arcy

Chartered Physiotherapist at St Judes

26 Lake Street

Leighton Buzzard

LU7 1RX



☎ 01525 377751

📧 www.stjudesclinic.com

enquiries@stjudesclinic.com

Appledown's Rescue Dog of the Month



Psyche is a pretty petite lurcher who was born in 2009. She has lovely manners on the lead and has an affectionate nature. Psyche is good with other dogs but could not live with cats or other small pets. She is a very sweet girl and we would love to see her happily settled. She cannot live in Luton.

If you can offer Psyche or any of our other dogs a loving and secure home, please call in at the kennels any day between 10 a.m. and 4 p.m. or phone us for more details.

Please note that there are restrictions on rehoming dogs to families with children under seven years of age. Full details of the rehoming process can be found on our website, or please contact the kennels.

Appledown Rescue and Rehoming Kennels Harling Road, Eaton Bray LU6 1QY

Call 01525 220383 or e-mail: appledown.kennels@btinternet.com

Website: www.appledownrescue.co.uk **Follow us on Facebook & Twitter!**



Eaton Bray
Good Neighbours



Helpline: 07930987064

**Manned phone hours: 9am to 5pm, Monday to Friday
(An answering service is available for out-of-hours calls)**

**Call us if you want help with getting to the surgery/
hospital, collecting prescriptions, minor errands,
form-filling, letter-writing, small d-i-y jobs, walking
your pet or other small needs.**

Dagnall Over Sixties

Dagnall Over Sixties enjoyed a delicious lunch of Sausage and Mash followed by an entertainment from a group of Ukelele players who belong to U3A on 18th Oct. On November 15th Brian and Rosemary Holt will be giving a presentation with

slides, on their recent holiday to India, in the village hall at 2pm.

The Xmas meal is on the 20th December at 1.30 in the village hall followed by carols and presents.

FOR SALE

Antique Pine office desk - Large and small draws, hideaway key board shelf. Size 4ft 6in long x 2ft depth x 2ft 6in high. Cost new £295 - sell for £75

Antique Pine 4 draw filing Cabinet - 4ft 8in high x 2ft wide x 1ft 10in depth. Cost new £249 - sell for £65

Antique Pine office shelf - 3 smaller shelves which you can move up or down for books and one larger for lever arch files plus a bottom draw for storage - 6ft 6in high x 3ft 10in wide x 10in depth - Cost new £335 - sell for £85

Good condition. Feel free to view and we can email a photo

Fishmate 5000 Pond Pumps and Bio UV Filter 5000 Pond Filter - cost £183, 5 yrs old, good working order. £25

Tel: 07734 111654

Children at Eaton Bray Academy get a Special Message from Gold Medallists Andy Murray & Gordon Reid

“Thank you to children at Eaton Bray Academy”



These first few words spoken by Andy Murray surprised the 28 children who were invited to visit the National Tennis Centre at Roehampton in London.

Back in June, children in year 6 entered a competition to write motivational speeches to inspire tennis team GB, who were getting ready for

Rio 2016 Olympics and Paralympics games. From a staggering 680 entries sent in by 50 different primary schools, Nathaniel’s recorded speech ‘Believe’ was the overall competition winner. His speech was delivered to the Olympic and Paralympic Tennis teams before the games. Also posters with the speech were displayed in the changing rooms for the athletes to read.

As a reward the entire class who had written a speech were invited to visit the National Tennis Centre at Roehampton, where Britain’s elite tennis players train. At the start of the visit the children were given a guided tour of the incredible training facilities at Roehampton. There was real excitement when the children ran down the running track used by Andy Murray and other tennis stars as part of



Believe.



Believe that there is power and strength within you to achieve the impossible. A great attitude is everything. Everyone knows that you are all born winners and history its self will remember you. You represent an entire nation: if you win, we are all winners.

Believe.

Believe that you own the court. You are the warriors of this sport. In doubles, you co-operate; in singles, you dominate. You have a whole nation behind you. Have courage. Remember, you can if you think you can.

Believe. Believe in the nation. **Believe** in your team. **Believe** in your coaches. But most of all, **believe** in yourself.

Believe.

Good luck Team GB. Make Great Britain proud.

their warm up. The children were then put through their paces by elite national tennis coaches who delivered a demanding two hour training session for them.

Finally, the real treat came when the children watched a video of our GB tennis heroes and to their amazement Nathaniel's speech was used as background track to a video; it ended with a special message from Gordon Reid our tennis Gold medallist Paralympic star and Gold Medallist Andy Murray. Both of them took some time out to thank all the children from Eaton Bray who entered the competition, with a special thanks to Nathaniel for a hugely inspirational speech. This was totally unexpected and a real surprise.

The children and the accompanying staff had the most inspirational day and felt it was a massive privilege to be given this opportunity.

✉ Mrs Slatter & Mrs Young



fitness
4fun



Get those muscles working! Tone and strengthen arms, legs, bums and tums – you'll look and feel great.

Why not give it a go? Only £5 per week for one hour of fun fitness. Pay-as-you-go, come when you can.

Come along and join our friendly group.

Everyone welcome.

No need to book – just show up.

What: Fitness4Fun with Kay

Where: Edlesborough Memorial Hall

When: Every Friday, 10:00-11:00 am



Stay & Play
Toddler
Group

Musical
Monkeys

Eaton Bray Village Hall
10-11.30am on Fridays

£4.50 for one adult and child
£1 for extra children/adults
0-6 months free



THANK YOU

The World's Biggest Coffee Morning held in St Mary's Church on Friday September 30th was our most successful to date and I would like to thank everyone who supported in any way. I would like to especially thank the magnificent team of helpers who made it happen, and everyone who contributed to the success of this event by joining us on the day. Also many thanks for all the donations of cakes, books, raffle prizes etc.



Willing helpers on the cake stall



One happy customer

The total raised was £1,000, a truly amazing figure and this demonstrates real charitable support in our villages. Edna Moore would also like to give a personal thanks to all those who gave donations to the cake stall, which raised the amazing total of £430. This brings the figure raised for Macmillan in this way to £5000 in the seven years since St Mary's Church first hosted a World's Biggest Coffee Morning We are very grateful and this will be put to very good use to try to ensure that no-one should face Cancer alone.

Thank you to everyone.

✉ Sheila Banks,

Macmillan Cancer Support Fundraising



St Mary's Ladies Guild

Deirdrea welcomed the ladies to the September meeting.

The devotions were read by Thelma, who was then presented with a plant and card to say thank you for preparing the devotions for many years, which had been greatly appreciated. Two of the members had been in hospital and they were remembered.

It was a great shock to everyone, to hear of the sudden death of Dorothy Bradbury, a well loved and vibrant person, who had supported the Guild in all that they had undertaken. She will be missed in so many ways.

Members were asked if they could bring a gift to the next meeting in readiness for the November Fair.

It was suggested that the Christmas meal

be held at the Bridgewater Arms again.

Joan Fossey offered to take on the sending of cards for birthdays and other occasions. Deirdrea then introduced the speaker Zena Dickenson who spoke on Luton Hoo Past and Present. Having worked there for over 31 years, she gave many interesting details on all the various owners and the changes made. June Thorne gave the vote of thanks.

Social time followed with a tea prepared by the committee and a raffle.

We meet on the second Wednesday of the month at 2.00pm, where we have a speaker or demonstrator, followed by afternoon tea and a raffle.

Please come and join us, where you will be given a very warm welcome.

Chocolate Truffled Meringues

I often say to my listeners “did I ever mention that I lived in France for 10 years?” and I can hear the communal groan go up as I do so! So yes, I probably did mention it and yes, I did live in Lille for the best part of the decade. Of course one of the things I loved about France was the food. My local bakery used to make something called a “Merveilleux”, literally translated as a “Marvellous”, and I would treat myself to one on a regular basis. Two big domed meringues, glued together with chocolate, rolled in chocolate and covered in, well, more chocolate. So when pastry chef Diana Woo, who runs the Délices Patisserie and Bakery in Bedford town centre, came on my show, I could not resist asking her to make a version of this favourite of mine. And she certainly didn’t disappoint. Perfect light meringues, naughty chocolate filling - and very pretty to boot. Make these a treat for family and friends...

For the meringues

180g egg whites (about 6)

375g sugar

For the ganache

50g whipping cream

100g milk

350 dark chocolate

For the decoration

150g chocolate sprinkles

Preheat your oven to 120C/ Gas Mark 1/2

Whisk the egg whites at a medium-high speed with 100g of sugar. When the egg whites become really firm, sprinkle in the rest of the sugar and keep on whisking.

Pipe the meringues into quite large half sphere shapes (around 5cm wide) on parchment paper on baking trays.

Bake for 1 hour in the oven, with the door slightly open (you can use a wooden spoon to keep it ajar).

When the meringues are cold, gouge a small



part of the meringue out from the bottom. Set the meringues aside.

Now make the ganache. Put the milk and the cream into a pan. Bring to the boil. Once boiling, pour the liquid onto the chocolate.

Wait two minutes for the chocolate to melt, then use a whisk to mix well. Cover with a plastic film and put aside to cool.

With a spoon, put some ganache into holes that you made in the half-meringues. Spread some more ganache around the bases and stick the two halves together to make a big ball.

With a brush, coat the outside of the sphere with some ganache then roll it into chocolate sprinkles or desiccated coconut (or anything flaky!) to coat it.

Hear wonderful recipes on Nick Coffey's Weekend Kitchen every Sunday morning on BBC Three Counties radio at 11am. You can also join Nick every weekday afternoon at midday for brilliant local guests with great stories to tell and all the music you want for your early afternoon.



95.5 FM | 103.8 FM | 104.5 FM | DAB | bbc.co.uk/threecounties

Your Photos



Above: Fairies by Karen Cawdell

Top right: Edlesborough Sign by Night by John Hockey

Bottom right: Ashridge by Brian Russell

Below: My Garden by Ken Coates

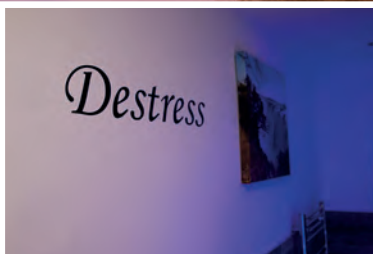


Floatation therapy

relaxation is the art of letting go



1 hour float
is equivalent to
4 hours sleep



CALL **01442 870686** TO BOOK A SESSION
reception@ejphysio.co.uk www.ejphysio.co.uk

3 The Old School House, George St, Hemel Hempstead, Herts, HP2 5HJ



STOCKISTS FOR



GUTTER BRUSH

**- All aspects of Pressure Washing -
Roof Cleaning / Coating specialists**

- Safe cleaning system using rope access
- Roofs cleaned using 'controlled' pressure washing
- All water recycled

For before and after photos please visit:
<http://www.facebook.com/greatoutdoorsandin>



0800 298 5883

www.greatoutdoorsandin.co.uk



FREE QUOTATIONS



AJR

BUILDING SERVICES

Over 25 years experience

Friendly and Reliable Service

Fully insured

All aspects of building work undertaken:

- Kitchens & Bathrooms
- Refurbishments
- Garage Conversions & Extensions
- Plastering, Painting & Decorating
- Wall and Floor Tiling
- Patios and Fencing
- Fascias & Soffits
- General Maintenance

Mobile: 07931 308306 Tel: 01582 475428

Email: ajrbuildingservices@hotmail.com

**A McClelland
Pest Control**



FOR FAST RESPONSE CALL:

Mobile 0777 494 8415

Office 01582 872158



*specialists in: wasps - bees - ants
hornets - fleas - cockroaches - bed
bugs - pigeons - magpies - rabbits
rats - mice - moles - squirrels
foxes - mink - feral cats*



UNMARKED VEHICLES

For further information please call or email
amcclellandpestcontrol33@gmail.com



family photography



hobby photography



product photography




locations & premises

www.redbrickphotography.uk

Eaton Bray's New Photographer!

07852 200 139

THE PERFECT PLACE FOR ANY OCCASION....

 *ACCOMMODATION - OFFERING A VARIETY OF
ROOMS/SUITES*

 *BREAKFAST, LUNCH OR DINNER
IN OUR HENRY'S RESTAURANT*

 *SUNDAY LUNCH*

 *MEETINGS*

 *WEDDING PACKAGES*

 *PRIVATE FUNCTIONS*

 *FUNERAL RECEPTIONS*

 *CHRISTMAS & NEW YEAR PARTIES*



FOR MORE INFORMATION ON WHAT WE OFFER,
PLEASE CALL US ON

01582 662201

OR VISIT OUR WEBSITE.

Leighton Plumbing & Heating

Oil fired boilers
service, repairs
& installations



All other aspects of plumbing
& heating undertaken

Oftec registered & insured

01525 385250
07774 567472

11 Woodman Close
Leighton Buzzard
Beds
LU7 3NU

leighton-plumbing@ntlworld.com



Helping Hands
The Home Care Specialists

Est. 1989

Do you need a Helping Hand?

Our **local** care team has been providing award winning quality homecare since 1989.

We offer a homecare service **from 30 minutes per week to full-time Live-in Care**, which enables you or your loved one to remain at home with compassion and dignity.

To find out how we can help,
call: **01296 752 632** or
visit: www.helpinghands.co.uk



Stoten Gillam
chartered accountants
chartered tax advisers

99 High Street South
Dunstable
LU6 3SF
Tel: (01582) 608601
www.stotengillam.co.uk

ICAEW
CHARTERED
ACCOUNTANTS



"Practical
Solutions for
Growing
Businesses"







www.plumbingandgas.org.uk

Gas boiler, fire & cooker,
servicing, installation
& repairs cylinders etc.

Heating system problems
inc. power-flushing

Dripping taps
& internal plumbing issues

Also solar thermal repairs & servicing
Inc. LPG and park homes

01582 674829

mark@plumbingandgas.org.uk




MOBILE MESSAGE THERAPY

20% OFF
FIRST 2 MESSAGES
Vouchers are available

Rejuvenate and revitalise with a massage.
Rest your mind, relax your body, relieve tensions,
restore calm and balance with some well deserved
respite from your busy life and daily stresses.

Sarah Tees, ITEC, CThA
07792 542760
01525 220323
esprittherapy.co.uk





FREE INITIAL CONSULTATION

OUR SERVICES INCLUDE:

Accounts • Bookkeeping Services • Cloud Based Bookkeeping • Tax Returns
Management Accounting and Reporting • CIS • Payroll Bureau • VAT Returns
Corporation Tax • Company Secretarial • Specialist Business and Tax Advice


Specialising in New Business Start-Ups

- Fixed Fee Quotes
- Unlimited Email and Telephone Support
- Back Office Solution
(dealing with your back office accounts function enabling you to focus on the rest of your business)

Please contact us for more information...

Gable End, Sparrow Hall Business Park
Leighton Road, Edlesborough. LU6 2ES
Tel: 01525 229 539 • Fax: 01525 220 180
enquiries@rileyaccounts.co.uk
www.rileyaccounts.co.uk

@RileyAccounts • Also on



Call us on...
01525 229 539

"YOUR LOCAL ACCOUNTANT"

We are a nurse-led home care provider committed to delivering the very highest standards of care.

Support from our dedicated team gives you or your loved one the peace of mind and confidence to be able to continue living at home.

Family-owned and managed, we are independent and do not belong to a national chain or franchise. We are registered with the CQC, number 1-1499072841.



your own
home care
putting the nursing back into care

To talk to us about your requirements please call Helen Yates RGN on 07920887414 or 01442 843064 or email helen.yates@yourownhomecare.co.uk



www.yourownhomecare.co.uk



Edlesborough Dental Practice



***Get the Beautiful Smile You Deserve!
Book your FREE Smile Assessment now.***

Edlesborough Dental Practice

Telephone: 01525 223175

11 Cow lane, Edlesborough, LU6 2HT

www.flossandsmile.co.uk

**General Family Dentistry * Crowns * Bridges * Dentures
Smile Makeovers * Tooth Whitening * Tooth straightening Implants
* Hygienist * Sedation * 0% Finance available**



Some comments from our December 2015 Ofsted report:

Children learn good manners and know how to treat each other with respect.

Staff are consistently kind and caring and this supports children to develop confidence and resilience.

Teaching is consistently good and children's safety is given the highest priority.

We are a committee run playgroup operating five mornings a week 9:15 – 12:15 for children aged 2 to school age.

If you would like to find out if your child would be happy here, please phone our Playgroup Leader, Ann Tobin on 07816 358 342.

www.dagnallunderfives.co.uk

DJH and Co Accountants Limited

Specialising in helping small
businesses and self-employed
people.

Financial Accounting, Bookkeeping,
Payroll and Tax Assistance services.
Competitive rates. Fully Licensed and insured.

01525 792288/07875560090
djhandcoaccountants@yahoo.com
www.djhandcoaccountants.co.uk

CHIROPODY HOME VISITING PRACTICE

Julia Reading, BSc(Hons)

17 years experience

- * Corns * Hard skin * Verrucae
- * Thickened/Ingrowing nails
- * Nail cutting * Diabetic feet

Please telephone: 0774 647 2781

for more information or to make
an appointment

 The COLLEGE
of PODIATRY

 hpcp
registered
www.hpcp-uk.org

Coffee Tavern



Large Hall £6.00 per hour

Committee Room £3.50 per hour

**Large Hall &
Committee Room £8.00 per hour**

Bookings 01525 220891

Stairlift and access ramp available


**Oven
Wizards™**
We clean your oven...so you don't have to

Call today to have your oven, hob, extractor or
Aga professionally cleaned

Contact Paul Joyce: Tel 01525 792761
Mob 07808 580718
pauljoyce@ovenwizards.com

Wag & Stroll

*Dog Walking &
pet caring service*

*One off or regular
walks in familiar
surroundings*

*Cat sitting also available
Please call Sue on*

07758 647488

email: wagandstroll@gmail.com




**Electrical
Services**
www.rselectricalservices.com


DOMESTIC
INSTALLER

**FULLY QUALIFIED
ELECTRICAL ENGINEER**
CPS Registered through NICEIC Scheme


City &
Guilds
Qualified

Competitive prices and quality service

Available for all your domestic and
commercial electrical requirements

No job too small

Call Russell Sears:

**07578 008567
01525 220008**

17 Good Intent, Edlesborough

Looking to visit Southern Africa...

For help with creating the best itinerary for you please call or email us

- We work with specialist companies to tailor-make the holiday to your requirements
- Friendly, honest advice from an independent travel agency
- Extensive experience to arrange every detail
- Using fully bonded tour operators
- No booking fees



Travel Impressions

01442 890265

enquiries@travelimpressions.co.uk
www.travelimpressions.co.uk

Suite 4, George House, 64 High Street, Tring, Herts. HP23 4AF

London Luton Airport

With an increase in aircraft in the area and in particular when the wind is from the East, we are getting some aircraft flying directly over the village to join the flight path into the airport. If you are disturbed by the traffic flying over the village, there is a complaints hotline number: 01582395382. This is an airport number where you can register your concerns. It is important to do this if we are to reduce these disturbances over our village.

If you need to complain about Heathrow flight noise the number is 0800 344 844.
Email: noise_complaints@heathrow.com



Town Farm ART SHOW

Perfectly timed for that special Christmas gift!

Paintings, Illustration
Ceramics, Woodcraft, Woodcarving
Jewellery, Egyptian quilts
Willow weaving, Sculpture

www.townfarmartshow.blogspot.com

Mulled wine, mince pies & Christmas cake
in aid of Rennie Grove Hospice Care

ONE WEEKEND ONLY
Friday 25 - Sunday 27 November
10am - 4pm

6 Town Farm, Cheddington, Nr Tring, LU7 0TT
PLEASE PARK ON HIGH STREET - NOT IN TOWN FARM

Free entry

November at the Grove

Frankly Sinatra

Thursday 3 November 8pm, Tickets: £25 – concession, Friend and group tickets available

Celebrating the centenary of Sinatra Live at the Sands, it's the world's number one Sinatra. Stephen Triffitt has the swagger and velvet vocals backed by the fantastic sound of big band swing.

The Magic of Motown

Friday 4 November 8pm, Tickets: £27/ £24.50 – concession, Friend and group tickets available

The Reach Out, 10th anniversary tour is a theatrical treat with a huge cast, continuing the legend of solid-gold artistes. Oozing with style, sophistication and musical brilliance, classics are revived amid a flurry of glittering costume changes, dazzling dance moves and superb musicianship.

The Entertainer – Encore Screening

Sunday 6 November 2pm, Tickets: £15 – concession and Friend tickets available

The Kenneth Branagh Theatre Company perform John Osborne's modern classic, conjuring the seedy glamour of the old music halls for an explosive examination of public masks and private torment. Kenneth Branagh stars as Archie Rice.

Isle of Woman

Tuesday 8 November 7.30pm, Tickets: £15 – concession tickets available

Think Joan Rivers meets the Andrews Sisters or Fascinating Aida with a hint of 40s close harmony. Starring Nicole Faraday (Bad Girls, Emmerdale), the show is a mix of raucous, sharp and witty comedy anthems, heartfelt songs and relaxed honest chat, expressing real women's views on many topics from dating to career, politics, relationships, feminism and single parenthood; all seen from 3 very separate female standpoints.

Think Floyd

Thursday 10 November 7.30pm, Tickets: £21 – concession tickets available

Think Floyd take enormous pride in recreating all the atmosphere, visual magnitude and musical excellence of Pink Floyd, live on stage. Enhanced with an impressive laser light show, this thrilling concert promises a first-class evening of pure Pink Floyd.

That'll Be The Day

Friday 11 November 7.30pm, Tickets: £25.50

The UK's no.1 Rock & Roll variety production features sensational classic gold hits, spanning the 50s through to the 70s and 80s, mixed as always, with even more hilarious comedy! You're guaranteed to be on your feet and dancing in the aisles before the night is over.

The Sensational 60s Experience

Saturday 12 November 7.30pm, Tickets: £27/ £25 – concession and Friend tickets available

Returning by huge popular demand, non-stop 60s nostalgia, as seven legendary names take to the stage, taking you back to when pop music was at its very best. With a definite feel good factor, this show is the must see 60s show for 2016.

A-Stars Dance Show 2016

Sunday 13 November 12pm & 5.30pm, £9 – concession and group tickets available

A community performance presented by A-Stars Dance & Theatre Academy, incorporating jazz dance, street jazz, modern dance, lyrical jazz and musical theatre by local performers aged 4-20 years old.

Shakespeare Schools Festival

Monday 14 & Tuesday 15 November 7pm, Tickets: £21/ £19 – concession tickets available

School children from across Bedfordshire will perform a unique series of Shakespeare plays and all are welcome to attend. SSF is a wonderful way to experience the language, magic and possibilities of Shakespeare so come along and see Shakespeare performed as you've never seen it before!

T.Rextasy

Wednesday 16 November 7.30pm, Tickets: £21/ £19 – concession tickets available

T.Rextasy are now accepted as the only official live tribute band dedicated to Marc Bolan and T.Rex, having toured the world for over 20 years, recreating one of the most flamboyant and charismatic stars of the original glam rock era.

Barnstormers Stand Up Comedy

Thursday 17 November 8pm, Tickets: £12.50/ £15, Age 18+

Make Thursday nights a game-changer with rib-tickling comedy from three top comedians of the London circuit; a different line up each month, introduced by the Barnstormers compère.

Circus of Horrors

Friday 18 November 7.30pm, Tickets: £25/ £20 concession and Friend tickets available, 18+

The Never-Ending Nightmare is the latest incarnation by Circus of Horrors celebrating its 21st anniversary. The spectacular features an amazing amalgamation of bizarre, brave and beautiful acts all woven into an Alice in Horrorland type story.

Adventure of a Lifetime

Saturday 19 November 2.30pm, Tickets: £12

A community performance presented by NKB School of Dance, celebrating their 15th anniversary. A fantastic afternoon for all the family, showcasing just some of the outstanding work from this well-established local dance school, supported by Tina's School of Dance and Herlihy Burgoine School of Irish Dance.

Les Contes D'Hoffmann – Encore Screening

Sunday 20 November 2pm, Tickets: £15 – concession and Friend tickets available

Created by Academy Award-winning film director John Schlesinger, this production brings alive a 19th century world of romance, comedy, mystery and menace from the vivid imagination of the drunken Romantic poet Hoffmann.



Living With Luke

Thursday 24 November 7.30pm, Tickets: £14, Age 14+

Danson Thunderbolt is no ordinary Dad, and his teenage son Luke is not so ordinary either. For Luke is autistic and the Autistic Shadow gets between them every single day, making communication a struggle. So what's a Dad to do? Wrestle the Autistic Shadow that's what, and all staged in a wrestling ring.

Christmas Crooners

Friday 25 November 7.30pm, Tickets: £15 until 7 October 2016

A fantastic cast of West-End singers are backed by the superb and talented swing band The Jazz All Stars, performing over 30 well known Christmas hits and many other swing arrangements of Christmas hymns and songs, and even a surprise or two! This production is staged in the warm and delightful style of the famous Andy Williams Christmas Shows.

The Salvation Army: Christmas at the Grove

Sunday 27 November 6pm, Tickets: Adults £!0/ Children £5

A community performance by three local schools and a local dance company, as well as Salvation Army members offering music, drama and dance in The Salvation Army's 10th annual carol concert.

Jackson Live

Wednesday 30 November 7.30pm, Tickets: £21/ £18 – concession tickets available

Long-time fan and hugely talented Ben, recreates the Michael Jackson experience with stunning renditions of his favourite songs. Joined on stage by his incredible band and dancers, Ben is the UK's most accurate and exciting tribute to the King of Pop.



THE PENDLEY ESTATES CONTINUED

Continuing our article from the July 2016 issue

BEDFORDSHIRE

One mile from Stanbridgeford Station on the London and North Western Railway, about four miles from Leighton Buzzard and three miles from Dunstable.

Particulars and Conditions of Sale with Plan
Of Valuable and Important

FREEHOLD ESTATES

OF ABOUT

1,067 Acres,

In the Parish of EATON BRAY,

COMPRISING

Dairy and Mixed Farms, Small Holdings,

Hunting Box, Corn Mill, Cottages and Accommodation Lands,

At present producing a Rental of

£2,088 per annum.

WHICH WILL BE SOLD BY AUCTION BY

Joseph Stower

At the "Swan" Hotel, Leighton Buzzard,

On TUESDAY, the 26th day of OCTOBER, 1915

At THREE o'clock in the afternoon precisely, in 35 Lots,

In conjunction with ARTHUR W. MERRY.

The several Properties may be viewed by permission of the Tenants, and copies of these Particulars can be obtained of

JOSEPH STOWER, Surveyor and Auctioneer, 43, Chancery Lane, London, W.C.; and of
ARTHUR W. MERRY, Land Agent, Leighton Buzzard.

Vendors' Solicitors:—

Messrs. LAWRENCE, GRAHAM & Co.,

6, New Square, Lincoln's Inn, London, W.C.

Messrs. PENNINGTON & SON,

64, Lincoln's Inn Fields, London, W.C.

Messrs. ASHURST, MORRIS, CRISP & Co.,

17, Throgmorton Avenue, London, E.C.

LOT 25

(Coloured *Purple* on Plan).

Picturesque Freehold Two-storied Cottage

of brick elevation, with half-timbered projecting gable and tiled roof, standing well back from the Edlesborough Road at Moor End, and containing Four Bed Rooms, Tile-paved Entrance Lobby, Sitting Room, Kitchen, Wash-house and Dairy, with Paved Yard with Coal Barn. GOOD GARDEN in front and Grass Plot in rear.

ALSO AN ENCLOSURE OF

Freehold Accommodation Pasture or Building Land

adjoining, having a good Frontage to the road. The whole comprising about

1a. 1r. 15p.

AS FOLLOWS :—

NO. ON PLAN.	DESCRIPTION.	QUANTITY.		
		A.	R.	P.
Pt. 229	Cottage and Garden	0	0	19
239	Pasture	1	0	36
Total A.		1	1	15

The Cottage and Premises are let to Miss Mary Mead on a Monthly Tenancy at a Rent aggregating to £7 16s. per annum, and the Land is let to Mr. Frederick Tearle on a Yearly (Michaelmas) Tenancy, at the Annual Rent of £7 per annum, making a total Rental for this Lot of

£14 16s. per annum,

Landlord paying Rates on the Cottage.

The Vicarial Tithe is apportioned at 7s. 2d., the value for 1915 being 5s. 6½d. The Land Tax paid in 1914 was 13s.

This Lot is Sold subject to an Easement of Sewer (the course of which is shown on the Plan) vested in the Eaton Bray Rural District Council.



Dagnall Weather Station (AONB)

Weather Conditions for September 2016



Elevation: 450 ft - Latitude: 51° 50' 13" North - Longitude: 0° 33' 34" West

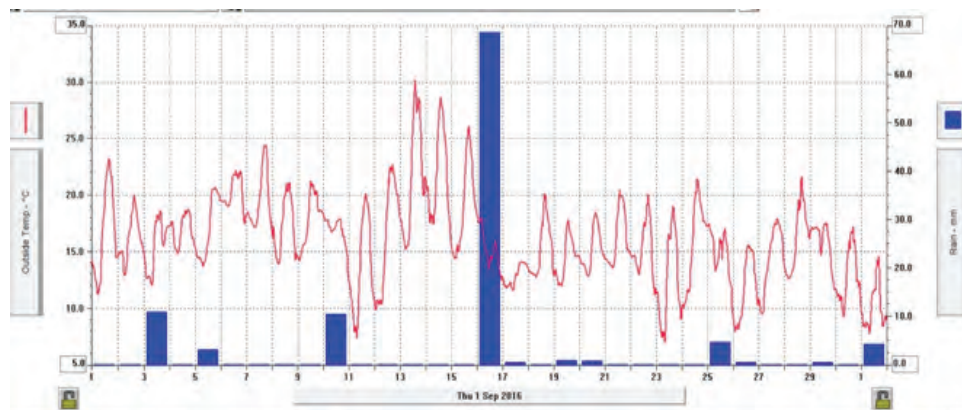
September was a month of records. Temperature: much warmer than normal reaching a high of 30.3°C on 13th and the month's "Mean Temperature" of 16.2°C was 3.8°C higher than last year. In weather terms that's a massive amount.

Sun: more hours of sun than an average September. Rain: In the South East area it was a dry month but here in Dagnall that was a different story. On the morning of the 16th we experienced a torrential downpour starting around 06.30 lasting about 1¼ hours during this time we had 53.8mm (2.118 ins) of rain. At its heaviest we recorded a rain rate of 151.6 mm (5.969 ins) per hour, the drainage in the village could not cope with this which caused the roads to flood.

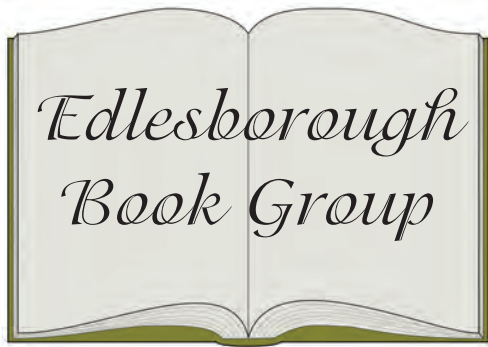
	High	Date/Time	Low	Date/Time
Temperature:	30.3°C	13 Sept 14.00	6.9°C	23 Sept 08.00
Mean Temperature	16.2°C			
Dewpoint:	21.2°C	13 Sept 08.30	5.9°C	1 - 13 Sept
Humidity:	97%	9 Sept 16.30	49%	5 Sept 15.30
Barometer:	1023.8mb	23 Sept 14.30	106.3mb	8 Sept 07.00
Wind Speed	31 mph SSW	23 Sept 18.30	Months avg.	4.3 mph
Wind Chill:	31.1°C	13 Sept 14.00	7.1°C	23 Sept 08.00
Dominant Wind:	W			
*Rain Days: 12(T), 12(R)		Wettest Day 16 Sept	68.61mm	2.701 ins
Monthly Rain:	Total	Sept 2016	101.2	3.984 ins
Yearly Rain:	Total	9 Month	574.5 mm	22.658 ins

September 2016

Plot shows the large amount of rain on the 16th and the high temperature on the 13th



For weather data 24 hours a day, updated every 15 mins, visit: www.dagnallweather.co.uk for a forecast and much more http://bit.ly/weather_dagnall you can also find Dagnall weather ipad & iphone on Wunderstation app Now updated every minute. If anyone has a question, comment or wishes to contact me please email: david@dagnallweather.co.uk or telephone: 01442 843883.



August is a Wicked Month by Edna O'Brien

When some of our members, having read The Country Girls trilogy, suggested that we choose a novel by Edna O'Brien for a late summer read, this book seemed the obvious choice. We knew a little about Edna O'Brien; that she was Irish, convent educated and that her books at first were considered quite shocking and were banned for some time in Ireland. Since then she has attained international acclaim and won many literary prizes. This, her fourth novel was published in 1965 and when reading it, one has to remember that the moral climate at that time was quite different from today.

At the beginning of August is a Wicked Month, we meet Ellen Sage, who has been separated from her husband for two years. She lives with her small son in the family home and her husband visits regularly. She helps her son and his father get ready to go on a camping trip together and when they are gone, she muses on how lonely and frustrated she has become and how she misses the companionship and intimacy of marriage. An unfortunate experience with a virtual stranger, a man she has met briefly, leaves her restless and acting on impulse she books a holiday on the French Riviera. She hopes that this will be liberating and help her to gain more confidence both sexually and as a person

in her own right. Once there, she is caught up in a group of very strange people, who are connected in one way or another to a famous American film actor. Although their hedonistic lifestyle is alien to her, she allows herself to be drawn in and to become another of the "hangers on".

Although the book purports to be the story of a woman striving to gain independence and dignity, it is difficult to understand Ellen or even to like her. Without this empathy, together with the cast of very undesirable characters around her, it is hard to relate to anything in this book. Our view of women and their place in society is vastly different to that of half a century ago and Ellen is of that time. Even so, she seems selfish and self involved, making unwise and thoughtless decisions which leave her unhappy and unfulfilled. A dramatic twist at the end of the book, makes the reader hope that she will be more responsible and mature as a result.

The book group were united in their dislike of the book, which is very unusual. The overall opinion was that although the writing was good, it didn't describe the background very well, there was no sense of place and the characters seemed rather cardboard.

Sorry Miss O'Brien!



Dunstable & District Local History Society

**Tuesday 8 November, 7.45pm
London 1851 and the Great
Exhibition**

Michael Gilbert talks about Victorian London and the amazing celebration of inventiveness and endeavour on display in the Crystal Palace at Hyde park.

**Methodist Church Hall, Dunstable
Visitors always welcome £2**

Salvation Sound

Remember, Remember the Fifth of November, Gunpowder, Treason and Plots...'



In the United Kingdom November 5th is the annual commemoration of the events of 1605 when Guy Fawkes, a conspirator in the Gunpowder Plot, was arrested while guarding explosives the plotters had placed under the House of Lords. Following the thwarting of the plot Londoners were encouraged to celebrate the King's escape from assassination by lighting bonfires.

While today the word 'guy' is often used to refer to any man, originally it was a term used for an 'ugly, repulsive person' in reference to Fawkes. Straw effigies were made of Guy Fawkes and thrown onto the bonfires to remember the failed gunpowder plot.

This month people will gather to celebrate Bonfire Night by enjoying the warmth and light of a bonfire, sharing food, and ending the evening with the joy of a colourful display of light and sound - fireworks.

Bonfire night is an explosion of light in contrasts with Halloween (which has become more popular in more recent years) with its focus on darkness. Interestingly though the origins of Halloween are the Christian festival of All Hallows' Eve, a vigil of prayer and singing in preparation for the celebration of the faith of saints and martyrs on All Saints Day on 1st November.

While darkness conceals, light brings hope. Even the tiniest light can make a difference. One single candle flickering can be seen by the human eye 30 miles away. Light helps us see all the wonderful things around us; light helps us to feel safe; and helps us to see the way to go.

Jesus in declaring himself to be the Light of the World was claiming that He is the source of spiritual light. Just as a candle dispels the darkness and guides, Jesus, as the light of the world dispel the darkness of evil in this world and guides us in the right way to live. Two thousand years ago Jesus gave us a blueprint on how to live in the Sermon on the Mount. His teaching was to love our enemies and pray for those who persecute us; to overcome evil with good. What a different world it would be if everyone lived by these standards.

As we celebrate Bonfire Night may we focus on the light, on the good things, around us rather than on the darkness, the bad things. May we be good neighbours who help one another. People who take account of the needs of others, who act as beacons of light which dispel the darkness. People who make a difference and bring hope to this community, this country, and to our world.

The Salvation Army, Booth Place, Eaton Bray Weekly Activities



Sunday

Footprints (Sunday School)	9.45-10.45am
Morning Worship	11am
Messy Church	3-5pm
<i>(Last Sunday of the month)</i>	
Songs of Praise	4pm
<i>(3rd Sunday of the month from May to Dec)</i>	

Tuesday

Coffee Morning	
<i>(Alternate weeks)</i>	10-11.30am
Music practices (all welcome)	7.30-9pm

Wednesday

Home League	2.30-3.30pm
<i>(Ladies Mtg but all welcome)</i>	
Champions Challenge Club <i>(term time)</i>	
<i>(Ages 5-10 years)</i>	5.45-6.45pm

Thursday

Parent and Toddler Group	
<i>(Term time)</i>	9.30-11.30am
Girls' Night Out	
<i>(1st Thursday of month)</i>	7.45pm
Sewing & Craft Bes	
<i>(2nd Thursday of month)</i>	7.45 pm
Ladies Fellowship	
<i>(Last week of month)</i>	7.45pm

For further details please call Envoy Hilary Chadwick. T:01525 222087 / 07932 057490
E: hilary.chadwick@salvationarmy.org.uk
W: www.salvationarmy.org.uk/eaton-bray

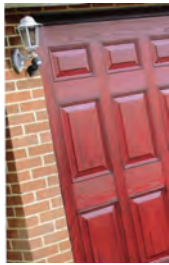


Premier Garage Doors & Gates



Quality Garage Doors

- ☑ Superb choice of designs in metal, wood and fibreglass
- ☑ Any size door made to your requirements
- ☑ Large selection of spares & fast repair service available
- ☑ New or existing doors converted to automatic
- ☑ Professionally fitted by own expert craftsmen
- ☑ Prompt free estimates & advice
- ☑ We cover all areas



(EST 1984)

DIY kits available
Insurance work welcome
Council approved
Remote control gates also available



Unit 7, Sparrow Hall Farm, Leighton Road, Edlesborough LU6 2ES

01525 220212

www.premiergaragedoors.co.uk



'TWAS THE NIGHT BEFORE CHRISTMAS
WHEN ALL THROUGH THE HOUSE
NOT A CREATURE WAS STIRRING,
NOT EVEN A MOUSE.

THEN THE OVEN WENT BANG
THE MICROWAVE POPPED
THE TV BLEW UP
AND THE DISHWASHER STOPPED.



"OH NO!" CRIED MUM
"BOTHER IT" SAID DAD
"TO MAKE MATTERS WORSE
WAYNE'S BIKE HAS A FLAT."

DON'T PANIC, DON'T PANIC
CHRISTMAS DAY WILL BE FINE
JUST LOOK IN THE FOCUS
GET JANES ON THE LINE!



Don't risk Christmas Day's festive fun. Whether you're looking for new carpet, replace an appliance or get a new bike for Wayne, pop along, give us a call or visit us online.



JANES

FLOORING DIGITAL APPLIANCES CYCLES SERVICE

01525 220208

WWW.JANESLTD.CO.UK

4-6 HIGH STREET, EDLESBOROUGH, LU6 2HS.