

FOCUS

October 2016



Focus is online at www.thefocusmagazine.co.uk
The local village magazine just for Us!
Eaton Bray, Edlesborough, Northall & Dagnall



The White Horse Eaton Bray

Great food in a lovely pub

Market Square
Eaton Bray
Beds
LU6 2DG

www.eatonbraypub.co.uk



Tel : 01525 220 231



OUR CHRISTMAS DAY AND DECEMBER PARTY MENUS ARE AVAILABLE NOW

Diary note

Next Jazz at The White Horse

Sunday 2nd October from 3:30pm

Sunday 6th November from 3:30pm

**Receive a 50% discount on a
bottle of house wine when
two people choose a main
course each from our
a la carte menu!**

(cut out and bring this with you)



invites you to

Café Community

Saturday October 8th 2016

11.00am to 1.00pm

Relax & chat with friends,
coffee/light lunch

All ages welcome (inc. activity area).



Eaton Bray
Methodist
Church

The Focus Magazine Committee

Editor: Sally Siddons

34 Wallace Drive, Eaton Bray 221733

Email: sallysid@hotmail.com

Assistant Editor: Liz Constable

Eaton Bray 222234

Email: lizconstable@hotmail.co.uk

Dagnall Representative: Sue Cawdell

10 Deans Meadow, Dagnall 01442 842200

Circulation Manager: John Plater

41 Church Lane, Eaton Bray 221095

Treasurer/Leaflet Enquiries: Ken Coates

10 The Nurseries, Eaton Bray 220868

Business Advertising: Sally Siddons

34 Wallace Drive, Eaton Bray 221733

Design and Layout: Tracey Moren

(Moren Associates Limited) 01525 229695

Printed by: PRIORITY Press

Dunstable 01582 699851

Copy for publication to the Editor by the

10th of the month

Focus accepts no responsibility as to the accuracy or content of any advertising or articles published in 'this' magazine, neither do they reflect the opinion of members of the Committee.

© Articles published in Focus may not be reproduced without permission.

Focus would like to remind contributors that the deadline for articles is the 10th of the preceding month

Kindly Note

If the event you wish to advertise falls in the first week of the month, it is advisable to get the details into Focus a month earlier. The magazines are not delivered from the printers until the first of the month, therefore it takes a few days for them all to be circulated throughout the village.

✍️ Editor

NORTHALL BAPTIST CHAPEL

Chapel Lane, Northall

(just beyond the 30 speed limit signs on
the road towards Leighton Buzzard)

Everyone is welcome to our Sunday
worship each week between 11am and
12.30pm including tea/coffee and time to
talk together.

For more information contact:

John Hazell 01525 218142

Email northallchapel@btinternet.com

There has been a Baptist Chapel in Northall
for more than 200 years. Today we continue
to seek to worship God, serve him in our
daily lives and support and encourage one
another in the difficult and the joyful times.

Focus is online at www.thefocusmagazine.co.uk

Village Diary October 2016



Weekly

- Mon-Fri (term time) Eaton Bray Pre-school, Eaton Bray Lower School, 01525 220468
- Mon-Fri (term time) Dagnall Under 5's, Dagnall Village Hall, 9.15am - 12.15pm, Mrs Ann Tobin 07816 358342
- Mon-Fri (term time) Edlesborough Pre-School, Edlesborough School, 01525 220431
manager@edlesborough.bucks.sch.uk
- Mon-Thu (term time) Totternhoe Pre-school, mornings, Totternhoe Lower School, Michelle Urbanowicz on 01582 668841
- Mondays Pilates, 10.45am, Totternhoe Memorial Hall, Lisa: 07799 893489
- Mondays Dagnall Community Choir, All Saints Church 7.45 – 9.45pm
- Mondays (term time) Movement and exercise classes with a dance flavour, Northall Village hall 2-3.30. Contact Jan 01442 864271.
- Mondays Curtain Call Youth Theatre 5-7.30pm, Eaton Bray Village Hall, Gavyn 01525 220525
- Mondays Curtain Call Theatre Group - 7:30-10:30pm Eaton Bray Village Hall, Sheila - sdtwinkletoes@yahoo.co.uk
- Mondays KFPA ISTD Classical Ballet classes, 3+yrs, 4.15pm, Edlesbrough Memorial Hall, www.kfpa.co.uk
- Tuesdays Line Dancing, 1.30-3p.m., Eaton Bray Village Hall, Lyn Stubbs 220731
- Tuesdays Pilates, 10-11am, Eaton Bray Village Hall, Nicky Roussou 07861 162680
- Tuesdays Totternhoe Baby & Toddler Group, 9.30-11.30am, St. Giles Church Hall, Ruth Allen, 01525 222468 or 07796 265174 or email ruthallen002@gmail.com
- Tuesdays Northall Baby & Toddler Group, 9:30-11:30am, (open in the Summer School Holidays) Northall Village Hall, Stacey Richmond 01525 222999/07957 607592
- Tuesdays Tap & Ballet Classes, JoAnn Latus School of Dance, 4-8pm, Eaton Bray Village Hall, 01582 620576
- Tuesdays Circuit Training - Edlesborough School Hall, 7-8pm - www.simplesfitness.com
- Tuesdays Fitness on the Green Class - Edlesborough Green, 9:30 - 10:15am, children and buggies welcome. See www.simplesfitness.com
- Tuesdays Coffee Morning, Bring & Buy, Table Top Sale, 10-12noon, Salvation Army Hall, Booth Place, Eaton Bray
- Fortnightly Pilates, 7.15pm, Northall Village Hall, Lisa: 07799 893489
- Wednesdays Egyptian Dance Class, 7.30-8.45pm at Eaton Bray Village Hall. Contact: Soraya on 07976 964316 for more details
- Wednesdays Northall & District Age Concern Wednesday Club, 10am - 3pm, Northall Village Hall, Contact Anna on 07854 230243
- Wednesdays Dynamic Yoga 6.30-7.30pm £5 Eaton Bray Coffee Tavern, Keira 07936 693696
- Wednesdays (term time) Caterpillars Baby and Toddler Group 10am to 11:30am, Grace Baptist Church, Moor End, Edlesborough, £1 per family unit, Frances King 01525 229 610
- Wednesdays Pilates 6.45-8.45pm, Dagnall Village Hall, Andrea on 07855 138005 or andrea@naturalpilates.co.uk
- Wednesdays Art of Ju Jitsu martial arts class, Eaton Bray Village Hall, 7 -7.45pm ages 6-15yrs
- Thursdays Yoga, Northall Village Hall, 11.30am-1pm 01525 377542
- Thursdays Baby & Toddler Group, Salvation Army Hall, Booth Place, Eaton Bray, 9.30-11.30am
- Thursdays Jazzercise, 9.30-10.30am, Eaton Bray Village Hall, Angela Veryard, 01525 715208
- Thursdays KFPA Street dance classes 4+yrs 4pm, Edlesborough Memorial Hall, www.kfpa.co.uk
- Thursdays Circuit Training - Edlesborough Green – 7:00 - 7:45pm – www.simplesfitness.com
- Thursdays Tae Kwon-do, Dagnall Village Hall, 5.45-7.30pm 07813 755785
- Thursdays Clubbercise 7.30 - 8.30pm. Eaton Bray Hall - Gina Flitton 07846421756
- Fridays Keep Fit class, Edlesborough Mermorial Hall 10 - 11am
- Fridays Tap & Ballet Classes, JoAnn Latus School of Dance, 4-8pm, Eaton Bray Village Hall, 01582 620576

Village Diary October 2016

Fridays (term time)	"Little Luvvies" baby ballet classes 10am-11.30am. Contact Emma Whittemore on 01525 376124
Fridays (term time)	Kids Club 6:00pm to 7:00pm Grace Baptist Church, Moor End, Edlesborough (across from the post office) Frances King 01525 229610
Fridays	Stay & Play toddler group, 'Musical Monkeys' at the Eaton Bray Village Hall, 10-11.30am, £4.50 for one adult and child, £1 for extra children/adults, 0-6months free
Saturdays	Jazzercise, 9.30-10.30am, Eaton Bray Village Hall, Angela Veryard, 01525 715208
Saturdays	KFPA Musical Theatre classes 4+yrs www.kfpa.co.uk, 10am, Edlesborough Memorial Hall
Sundays	Sundays Worship at 10:30am and 6pm Grace Baptist Church, Moor End, Edlesborough (across from the post office). Barry King 01525 229610
Last Sunday	Messy Church, 3-5pm at The Salvation Army Booth Place
Monthly	
1st Monday	Eaton Bray Parish Council Meeting, 7.30pm, The Coffee Tavern (except January-2nd Monday)
1st Monday	Eaton Bray W.I. Meeting, 7.30pm. Eaton Bray Methodist Church Hall. Contact Margaret Jones on 01525 220991
1st & 3rd Tuesday	Dunstable & District Orbit (social and charitable) Club meet at Dunstable Rugby Club at 8pm. For details contact 01525 222441 or 01582 755147
1st Saturday	St. Mary's Church, Eaton Bray Coffee Morning & Plant Sale, 10:30am - 12 noon
2nd & 4th Tuesday	TOTS, St Mary's, Eaton Bray, 2pm
2nd Tuesday	Dunstable & District Local History Society meeting, 7.45pm, Methodist Church Hall, Dunstable (opposite Wilkinson)
2nd Tuesday	Edlesborough W.I. Meeting, 7.30 pm, Edlesborough Memorial Hall
2nd Wednesday	St.Mary's Ladies Guild, 2pm, St.Mary's, Eaton Bray
2nd Wednesday	Eaton Bray & Edlesborough Lions Club, 7.30pm, The Coffee Tavern
2nd Thursday	CAMEO Coffee, tea & chat, 10am-12noon, Edlesborough Methodist Church
2nd Saturday	Workshops Dynamic Yoga 9.30-11am £10 Eaton Bray Coffee Tavern, Keira 07936 693696
3rd Thursday	Edlesborough Parish Council Meeting, 7.30pm, Memorial Hall
3rd Sunday	Lunch club 11.30 to 2.00pm, Eaton Bray Village Hall, Chris Hewitt 222288
Last Saturday	Coffee Morning, 10:30-12 noon, Edlesborough Methodist Church
Last Sunday	Messy Church, 3-5pm, Salvation Army, Booth Place, Eaton Bray, 07932 057490
Other Regular Events	
2nd	Beds Area Narrow Gauge Model Railway Club Meeting, 11.30am-4.30pm, Eaton Bray Village Hall
8th	Cafe Community, 11am-1pm, Eaton Bray Methodist Church
14th	Leukaemia Research Coffee Morning, 2 Dunstable Road, Dagnall 10.30am. All welcome.
18th	Dagnall Over Sixties 2pm in the village hall 1:30pm for the Bangers and mash lunch followed by entertainment from the ukulele players
24th	ELF walk from Eaton Bray Church, 9:30am
One Off/Annual/Irregular Events	
8th	Edlesborough School Chesham Comedy Club, 7:30pm, Tickets: £10 07811 117099
15th	Dagnall Community Choir in Concert, 7:30pm, Eaton Bray Village Hall, Tickets: £8 01525 220189
20th	ELF visit to Milton Keynes Museum, 10:30am from Eaton Bray car park
20th - 22nd	Front Row present "The Farndale Avenue Housing Association Townswomen's Guild Dramatic Society's production of "Macbeth"", Eaton Bray Village Hall Starts at 7.30 pm Doors & Bar open at 7.00 pm Box Office 01525 222283.
29th	Quiz, 7pm, Eaton Bray Village Hall, £9 per person Ross 221411
30th	Edlesborough Halloween Fun Run, 1pm, Edlesborough Green, Adults: £10, Children £5, Application forms 07747 618825

Village Notices



EDaN Community Transport
Peter Williams: 01442 842506

Village Hall Bookings

To book your local village hall for an event please contact the following:

Northall: Lorna Cabbage Tel: 07857 318696 Email: northallvhbookings@gmail.com

Eaton Bray: Norman Lee Tel: 01525 222831

Email: bookings@ebvh.co.uk Website www.ebvh.co.uk

Dagnall: Elizabeth Coates Tel: 01442 842550

Edlesborough Memorial Hall: Penny Pataky, Tel: 01525 229358

Email: manager@edlesborough-pc.gov.uk

Police Contact Numbers...

making neighbourhoods safer together

General Assistance (Recommended Number): 101 Emergency: 999

Bedfordshire Police (Eaton Bray)

Leighton Buzzard Police Station/Kathryn Horgan: 01582 473411

Typetalk: 18001 01582 473418

Email: LPT.LeightonBuzzardLinslade&Rural@bedfordshire.pnn.police.uk

Thames Valley Police (Edlesborough, Dagnall & Northall)

PCSO Jackie Dodson Mobile: 07800 703 524

Email: NHPT@thamesvalley.pnn.police.uk



EATON BRAY PARISH COUNCIL



Please come and help to run your village
BECOME A PARISH COUNCILLOR



The Parish Council is nine members of the public

We come to each Parish Council Meeting in the Coffee Tavern on the 1st Monday of each month and spend on average around six hours each month advising and helping to run our village.

At present we have **TWO** vacancies – will **YOU** come *and* join us?

If yes, please contact the Parish Clerk – contact details below.

You can also view our website for more details



Heidi Head, Parish Clerk & RFO

Email: clerk@ebpc.co.uk - Telephone/Fax: 01525 221464 - Website: www.ebpc.co.uk

Office Hours: Tuesday/Thursday/Friday 09:30-13:30hrs [messages can be left on answerphone]



Thank You from Coralie



Here I am in Bulth Wells, it's slightly damp outside but that's Wales. Thank you all in the four villages for your initial welcome and farewell. I really enjoyed my five plus years with you and met many lovely people in and out of the church. Walking the footpaths with Winnie (my dog) was a great way to get to know other dogs and the people they take for a walk. Thank you to all who chatted to me, it was lovely to get to know you and I will miss you.

Winnie loves the River Wye, the fishermen are not as keen on her when she launches herself into the water with me hanging on to the end of the lead. It is beautiful walking along the river with hills in the distance and a tremendous sense of peace.

The house will, I hope, be ready for Christmas. The cottage we are in is quaint and cosy but we'll never fit our 4 adult children plus 4 partners in. Calm and reflective at all times.

Finally thank you for your generous gifts. I'm really looking forward to using the gift tokens next Spring as I transform the garden.

God's blessing and my love,

Coralie

Life After Coralie

WHAT DO WE NEED TO DO IN THE FOUR VILLAGES?

The August/September edition of Focus included a farewell letter from Coralie – but what happens now that she has retired and until a new vicar is installed? The normal Sunday services have been covered by 'Rent-a-Vic' and we are looking forward to seeing some clergy friends who have helped us in the past. The normal Tots and Messy Church will continue though there may be some changes of time or day which will be publicised.

It's what Coralie did that we never saw, that we now have a problem with. She saw so many people in the street whilst out walking her dog Winnie, in all four villages. Many of these people were not churchgoers but benefited from just having a chat. From these chats she found out that someone was maybe unwell or needed to talk about a baptism or marriage. So much information was gathered in this way. We now have to be the eyes and ears. Please let the Church Warden or the Pastoral Group know if you think that a friend or neighbour needs a visit or just a chat about something that maybe bothering them.

The following people can be contacted: Catherine Hayden, Churchwarden 220527; Gordon Gray, Reader, 220136; Chriss Hewitt, Pastoral Group and Parish Lunch contact, 222288

Also in Eaton Bray there is the recently launched Eaton Bray Good Neighbours Scheme through which you can pass on a message if you think a visit would be helpful to someone – Helpline : 07930987064

✉ Martin Quinn on behalf of the PCC

Services at St Mary's Church

SUNDAYS : **8.00am** HOLY COMMUNION
 10.00am PARISH SUNG HOLY COMMUNION

On Third Sunday of each month:

10.00am – WORSHIP FOR EVERYONE a shorter, less formal service for families. (For anyone wishing to attend a service where Holy Communion is offered, there is a Family Communion at 10.30am at All Saints' Church, Dagnall, where visitors are assured of a warm welcome).

WEEK-DAYS:

Tuesday: **2.00pm** TOTS (Tots on Tuesdays) (2nd & 4th Tuesdays)

Wednesday: **10.00am** Holy Communion

EVERYONE WELCOME AT THESE SERVICES

EDLESBOROUGH SURGERY & THE VILLAGE HEALTH CENTRE, PITSTONE 2016 FLU CAMPAIGN

We would appreciate it if you could come at these times in order to MINIMIZE YOUR waiting time. However, if you are unable to come at the allocated time for your surname, please feel free to attend any of the clinics below:



All dates are in October:

EDLESBOROUGH	PITSTONE
SATURDAY 8TH 9am – 12.30 Surnames A - M	WEDNESDAY 12TH 12.30 – 2pm Surnames A - M
SATURDAY 15TH 9am – 12.30 Surnames N - Z	
THURSDAY 13TH 12.30 – 2pm Surnames A - M	WEDNESDAY 19th 12.30 – 2pm Surnames N - Z
THURSDAY 20TH 12.30 – 2pm Surnames N - Z	

PLEASE CHECK ON OUR WEBSITE & POSTERS ON SURGERY AND PHARMACY DOORS NEARER THE TIME TO CONFIRM THESE DATES AND TIMES



Patients eligible for Flu vaccine are those who suffer from:

Heart Disease * Kidney or Liver disease * Diabetes

COPD or severe Asthma * Stroke & Neurological disease

Lowered immunity due to disease, or treatment of disease

Carers * All pregnant ladies * All patients over 65 years of age

All children aged 2, 3 & 4 years (incl reception)

Children in school years 1, 2 & 3 will be vaccinated at school

Eaton Bray with Edlesborough Parish News

Church Warden & Pastoral Matters: (01525 220527)

Reader: Gordon Gray (01525 220136)

So, after five years we have said goodbye to a vicar that most people came to know simply as Coralie. Coralie blew in to the parish like a breath of fresh air and hundreds of people who, perhaps, had never met a vicar before suddenly found themselves chatting to one as though they had been doing it all their life.

And with Coralie's departure the parish now has to find a replacement. It's a process that may take as little as eight months though past experience has shown that the period can extend rather longer – we shall see. The first question we have to address as a church community is “What sort of person are we looking for?”

I wonder what qualities you would like to see in your parish priest; perhaps you think you don't really care but there are quite a few families who called on Coralie at any hour of the day or night asking her to come and sit with a dying loved one. Perhaps you are at the other end of spectrum of life – a school child looking forward to the vicar coming to lead an assembly and making you laugh. Or maybe you are wishing to be married in church or to have your child baptised. I guess you want a vicar who will help you with important decisions, explain the service in a language that is easy to understand, ensure the paperwork is all securely in place; a vicar who is on the end of a phone to speak to whenever you need it.

Perhaps your ideal vicar is one who is capable of conducting a solemn service when solemnity is required and light hearted worship when that is the most appropriate; oh yes, and they must preach inspiring sermons week after week no matter what level of family or work stress they may have been through in the previous week (but their sermons should never last more than 5 minutes).

What else? Well, it goes without saying that the ideal candidate will be a skilled administrator, an inspired leader, very spiritual, a good communicator, someone that everyone can trust; someone who attends most events in the villages, someone capable of driving between Eaton Bray and Dagnall in under 5 minutes in order to take the next service.

The demands on a parish priest are enormous and often conflicting. I doubt there is a person in the country, let alone a vicar, who could meet everyone's aspirations. It won't be long before we have a new vicar and while we wait the laity, supported by visiting clergy, will attempt to keep things running seamlessly at St Mary's and at All Saints. But we would ask for the support of as many people in our villages as possible. Please pray for us and for the decision we have to make, and pray for a new vicar who will lead us on our continued spiritual journey and have the qualities that the parish is going to need over the coming years.

✉ Gordon, Reader at St Mary's Eaton Bray with Edlesborough



EATON BRAY PARISH COUNCIL



HIGHLIGHTS OF THE MINUTES

A full/detailed copy of the minutes for Eaton Bray Parish Council can be found on our website.

A hard copy of the minutes can also be viewed on the Parish Council's notice board at The Coffee Tavern.

Meeting of Eaton Bray Parish Council

held on Monday 4th July 2016 from 7:30pm at The Coffee Tavern

Central Beds Council (CBC) – Councillor Ken Janes

Website: www.centralbedfordshire.gov.uk - Customer Services: 0300 300 8302 -

Email: customers@centralbedfordshire.gov.uk

Bedfordshire Police

Your Local Policing Team: *Non-emergency call 101 / All emergencies 999*

Vacancy - Parish Councillor:

There are vacancies for Parish Councillors on Eaton Bray Parish Council. If you are interested in joining the council please email the Parish Clerk or visit our website for more details

Election of Chairman

Cllr. Neil Cartwright was elected as Chairman of the Parish Council.

Neighbourhood Plan

The Neighbourhood Plan Steering Group are looking for help, if you can spare some time to support this important scheme then please contact the Parish Clerk who will forward your details on to a member of the Steering Group.



Speedwatch

The Parish Council are always looking for new members. If you would like to get involved in trying to slow down traffic in the village and are concerned about road safety please contact the Parish Clerk expressing your interest.



Overgrown Hedges In Village

To report a problem hedge, go direct to the Central Bedfordshire Council website on the following link: <http://www.centralbedfordshire.gov.uk/transport/report/highways-fault.aspx> .

Next Parish Council Meeting Date:

Monday 3rd October 2016 from 7:30pm held in The Coffee Tavern (1st floor)

OVERGROWN TREES/HEDGING



Once again the Parish Council wishes to remind residents' that they need to ensure their hedges/bushes/trees do not encroach onto the public footpath and are cut back to their property boundary line, allowing free access for footpath users.

CUT IT BACK!



Heidi Head, Parish Clerk & RFO

Email: clerk@ebpc.co.uk - Telephone/Fax: 01525 221464 - Website: www.ebpc.co.uk
Office Hours: Tuesday/Thursday/Friday 09:30-13:30hrs [messages can be left on answerphone]

Follow Eaton Bray Parish Council on Facebook and Twitter

Keep up to date with what is going on in the parish



UNICORN WINDOWS LTD

“WHERE QUALITY & SERVICE ARE NOT A MYTH”

www.unicornwindows.co.uk

Tel: 01525 854272



Unit 3 Youngs Industrial Estate, Stanbridge Road, Leighton Buzzard

comput@mation
computer support & services

Computer Support for Business & Home

Problem Solving:

- Virus & Spyware Removal
- Internet & Email Assistance
- Fault Diagnostics
- Repairs & Upgrades
- Slow Running PC's

Sales:

- Desktops, Laptops & Tablets
- Printers & Peripherals
- Software

Services:

- PC, Mac & Linux Support
- Wired & Wireless Networks
- Data Recovery
- Install & Set-up
- Health Checks

On-site Visits:
Office Hours & Evenings
by appointment

For friendly advice call John Wallace: 07968 536068 or 01525 261381
Email: john@computamtion.co.uk
Web: www.computamtion.co.uk

Computamtion Services Ltd - Est.1999 with over 25 years experience
9a Lower Way, Great Brickhill, Buckinghamshire, MK17 9AG

Carpet & Upholstery Cleaning

Professional & Local

All work guaranteed - not happy, don't pay

Powerful equipment means drier much quicker than other methods

100% Guaranteed no chemicals left in carpet when dry therefore will not easily resoil & perfectly safe for children & pets

Recommendations account for 90% of my work

Absolutely no hard sell

Telephone Colin for a Free Quote

DEEP-CLEAN

01525 851 811

www.deep-cleaners.co.uk

Email: colin@deep-cleaners.co.uk

EDLESBOROUGH SURGERY

11 Cow Lane Edlesborough

Enquiries - 01525 221630 Appointments - 01525 220333

www.edlesboroughsurgery.co.uk

**Dr J R Bell, Dr Heather White, Dr Stephanie Johnston
Dr Kirsten Riemer, Dr Charlotte Fisher**

Friendly village Practice offering a wide range of health services including coils/implants, minor surgery, travel advice, in house blood tests, on-line appointments and repeat prescription ordering. Nurse Practitioners offering acute clinics with same day appointments. Also, Midwife, Health Visitors in attendance. Local District Nurse service.

Long established training Practice with a rotation of qualified doctors.

EDLESBOROUGH PHARMACY

01525 223181

Pharmacist – Mitul Patel

Friendly reliable professional service at the pharmacy and well established delivery service to the villages. Professional advice always available.

All doctors/dentists/veterinary and hospital prescriptions dispensed.

Herbal/Homeopathic products available. In addition – Disability Aids, e.g. wheelchairs, walking frames, incontinence aids, Ostomy products, Malaria prophylaxis, Erectile dysfunction, Salbutamol supply without prescription. Flu vaccination available.



For all your painting & decorating requirements
 Domestic and Commercial
 call Max for a free estimate with no obligation
maxbro@btinternet.com



City & Guilds
 Qualified

- **Plumbing** - Showers, Toilets problems, Baths, Outside Taps, Drips & Leaks, Radiators, Tiling
- Specialising in Full or Partial Bathrooms Installations (References available on request)

Call Mark for a FREE no obligation quote **01525 220994**
 All work fully insured and guaranteed. **07842 653832**

30 Years Experience
Domestic & Commercial Security



Burglar Alarms
Redcare Monitored Systems
Intercoms
CCTV
Access Systems
Locks



CERTIFICATE NO. NAC/G/2113

Quality Installations – Competitive Prices
Insurance Approved **Free Surveys**

AAA SECURITY

01525 378222

Email: sales@aaasecurity.co.uk

www.aaasecurity.co.uk





Local family run business - Not a franchise

All chemicals used are Eco-friendly, non-toxic, non caustic and non allergenic
All work guaranteed and fully insured

All products are Child, Pet and Pregnant Safe

- Ovens & Hobs
- Extractor Hoods
- Microwave Ovens
- Agas
- Fridges
- Carpets
- Rugs
- Upholstery
- BBQs
- Freezers



☎ 01525 22 19 22 or 0800 122 3393

🌐 www.ecotechovenandcarpetcleaning.co.uk

@ info@ecotechovencleaning.co.uk

Dominic Woolcott

Painter & Decorator



- Internal & External
- Plastering & Coving
- Insurance Work
- 20 Years Experience
- Competitive Rates

**For a professional job call:
01525 229682 or 07747 042879**

P. DYER ELECTRICAL

For all your Electrical & Testing & Inspection needs

- Re-wires
- Testing & Inspection
- Security Systems/Lighting
- LED & Low Energy Lighting
- Decorative Lighting
- PAT Testing
- Fuse Boards
- Fault Finding/Repairs

Fully insured, Part P registered, all work guaranteed.
Fast, friendly, reliable, local electrician. For a free,
no-obligation estimate, call Paul on:



Tel: 01525 222109
Mobile: 07850 682815



David John Harris



(Established 1992)

All Fencing Work • All Gates • Paving • Patios
Driveways • Shingle • Hedge Setting and Cutting
Grass Cutting • Turfing Specialist • Exterior
Painting Service • Sheds Small Building Work
Trees & Shrubs Supplied

Tel/Fax: 01525 221745
Mobile: 07889 143713

Barry Cato Motor Repairs

Est. 1981

Servicing, repairs and MOT's arranged

Workshop at:

r/o Norfolk House Farm, Harling Road
Eaton Bray, Dunstable, Beds, LU6 1QY

Tel: 01525 221681 (workshop)
07836 650015 (mobile)



GYM & TONIC

**WANT TO GET FIT, HAVE A
HEALTHIER LIFESTYLE & IMPROVE
THE WAY YOU LOOK & FEEL?**

The following can be provided in our
Gym in Edlesborough or in your home

- * **A Health & Fitness Consultation** *
- * **Personal Training** * **Massage** *

Ruth Anderson Dip. PT & ST, Member of: Inst of Sports
Therapists & Register of Nutritional Therapists

Tel:01525 223074 Mob:07812 163979

D NICHOLSON PLUMBING REPAIRS and INSTALLATIONS

NO JOB TOO SMALL



- Emergencies • Free Estimates
- No call out charges

Dave Nicholson

MOBILE: 07976 975604

HOME: 01525 872335

**City &
Guilds
Qualified**

For all your building needs look no further



BRIGGS

BUILDING & CARPENTRY SERVICES

Established 1981



For a professional, friendly service call:

(01525) 221767

(07970) 214439

Domestic & Commercial

Extensions
Renovations
Conversions
Alterations

New Builds
Roof Repairs
Kitchens
Bathrooms

Patios
Driveways
Decking
Garden Walls

Mini Digger, Skip Loader and Dumper Hire

All Work Guaranteed

Free Estimates



Flicks & Bangs

HAIR SALON

A warm, friendly salon offering a wide range of bespoke hair services for all the family. Feel free to pop in for a complimentary consultation.

www.flicksandbangs.com

Flicks & Bangs

66 High Street
Eaton Bray
Nr. Dunstable
Beds LU6 2DP

01525 221252



Opening Hours

Mon Closed
Tue 9 am - 5 pm
Wed 9 am - 5 pm
Thu 9 am - 8 pm
Fri 9 am - 7 pm
Sat 8 am - 4 pm
Sun Closed

pinstripes signs
pinstripes graphics
pinstripes clothing

01525 220485
07973 167779



BUSINESS CARDS

www.pinstripessigns.co.uk
find us on facebook
 pinstripes signs graphics clothing

WASHING MACHINE REPAIRS

ALSO
 DISHWASHERS, TUMBLE DRIERS,
 AND ELECTRIC COOKERS



Call
ANDERSON D.R.S.

01582 665764

www.andersondrs.co.uk
 SALES AND RENTALS AVAILABLE

 **Lee Hutt**
 Heating & Plumbing Services

Bathrooms, Design & Installation

Tiling ♦ Heating ♦ Powerflushing ♦ Taps ♦ Leaks

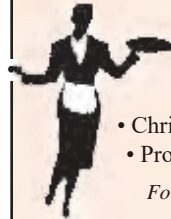
Call Outs ♦ Free Estimates Given



01525 222145



07971 559185



Patricia's Cuisine

Catering For All Occasions

- Buffets, Dinners •
- Christenings, Weddings, Funerals •
- Promotions & Business Lunches •

For Enquiries & Menu

Meadside Farm, 104 High Street,
 Eaton Bray, Bedfordshire, LU6 2DP

Telephone: 01525 222174

P.J.BRINKLOW

Electrical Contractor

01525 220469

07860 781330

**43 Pebblemoor
 Edlesborough**

'A wonderful place to be'



Eaton Bray Academy



T. 01525 220468

E. admin@eba.ec

www.eatonbrayacademy.co.uk

smartAUTOGROUP

ESTABLISHED LOCALLY FOR 14 YEARS

Fully equipped Car Bodyshop, Service Workshop
& MOT Bay



- New MOT Bay
- 4 Wheel Alignment & Tyre Fitting
- Specialists in Complete Classic Car Restoration
- Dealer Trained Technicians
- Ford, Vauxhall, VW, Audi
- Extensive Experience in Prestige Car Paintwork and Repair
- One-Stop-Shop for all your Servicing, Repairs, Bodywork & Maintenance
- Accident & Vandalism Damage
- All Insurance Work Undertaken - We can also cover your Excess and provide a Courtesy Vehicle (subject to T's & C's)
- Mobile Car Body Repairs – Fully Equipped Vans that come to your Home or Office.
- Alloy Wheels – Dents - Bumpers – Chips – Scratches - Scuffs
- Free Collection and Delivery, Loan Cars and Lifts when required

We pride ourselves on always being competitive for the right job.

**£10 OFF WITH
THIS ADVERT**



Call us on **01582 664772** or visit **www.smartautogroup.co.uk**

Units 17 & 18a, Icknield Way Farm, Tring Road, Eaton Bray, Dunstable LU6 2JX



Edlesborough Parish Neighbourhood Plan

Following the three Public Consultations held in July a thorough analysis of the returned questionnaires was carried out and the results are as follows:

EPNP Questionnaire Analysis (Questionnaires received as at 29/7/16)

Dagnall	19 questionnaires returned (19 electors)	
	Resident electors = 424	19/424 = 4.5% response
Edlesborough	172 questionnaires returned (184 electors)	
	Resident electors = 1398	184/1398 = 13.0% response
Northall	29 questionnaires returned (30 electors)	
	Resident electors = 367	30/367 = 8.2% response

There were a further 8 questionnaires from Northall from individuals not on the Electoral Register, which have not been included in the analysis

Overall Parish Response

220 questionnaires returned (233 electors)
Total resident electors = 2189 233/2189 = 10.6% response

For each of the topics where a choice was requested (Vision, Key Objectives, Business, Housing Options Edlesborough, Dagnall Development Options and Northall Development Options) the distribution of the responses has been calculated as a percentage of the number of questionnaires that offered a response for that topic.

Vision

Overall Parish response	Agree or Strongly Agree	42%
	Neither Agree nor Disagree	22%
	Disagree or Strongly Disagree	36%

Key Objectives

Overall Parish response	Agree or Strongly Agree	46%
	Neither Agree nor Disagree	22%
	Disagree or Strongly Disagree	32%

Community Facilities

Facilities that were considered important to preserve included:

Dagnall – Village Hall, School, Recreation Ground, Pub

Edlesborough – Shops, Surgery/Pharmacy/Dentist, Church on the Hill, Chapels, School, Village Hall, Post Office, Allotments, Village Green (incl Pavilion, play area & tennis courts), Scout Hut, Café, Bus service, Riding Stables.

Northall – Pub, Village Hall/Play Area, Chapel, Allotments

Business

Overall Parish response	Agree or Strongly Agree	59%
	Neither Agree nor Disagree	30%
	Disagree or Strongly Disagree	10%

Green Spaces

Green spaces that were considered to need protection included:

Dagnall – Recreation Ground, Allotments, Grass verge opposite Red Lion, AONB views

Edlesborough – Village Green, Allotments, Amenity Land, Areas by the river, AAL vistas, Views of Downs (incl Whipsnade Lion)

Northall – Village Green, Allotments, Views of Downs/Beacon

Heritage

Heritage buildings that were considered to need protection included:

Dagnall – Church, Village Hall, Older houses

Edlesborough – Church/Graveyard, Tythe Barn, Dovecote & Moat, All listed buildings & their settings, School (original building), Taskers Row Cottages, Village Hall, Old Mill next to the Ford

Northall – Older buildings, Chapel, Swan Pub

Housing Options Edlesborough

Edlesborough electors only

Q1.	Sites EDL002, 003B & 020 to be allocated	Yes 71%	No 29%
Q2.	Sites to make up the residual number of houses		
	EDL001 only	17%	
	EDL021 only	25%	
	Both EDL001 & 021	32%	
	Neither EDL001 or 021	26%	

Overall Parish response

Q1.	Sites EDL002, 003B & 020 to be allocated	Yes 70%	No 30%
Q2.	Sites to make up the residual number of houses		
	EDL001 only	16%	
	EDL021 only	24%	
	Both EDL001 & 021	35%	
	Neither EDL001 or 021	25%	

Dagnall Development Options

Dagnall electors only

Q1.	Do nothing	53%	
Q2.	Sell off the Hall	16%	
Q3.	Community Right to Build	37%	

Overall Parish response

Q1.	Do nothing	34%	
Q2.	Sell off the Hall	23%	
Q3.	Community Right to Build	50%	

Northall Development Options

Northall electors only

Q1.	Do nothing	0%	
Q2.	Dean's Farm Site	Yes 83%	No 10%
	EDL017 (Old Oaken Cottage)	Yes 38%	No 45%
	EDL019 (Eaton Bray Road)	Yes 31%	No 41%
	Orchard (next to Knolls View)	Yes 17%	No 59%

Overall Parish response

Q1.	Do nothing	16%	
Q2.	Dean's Farm Site	Yes 63%	No 9%
	EDL017 (Old Oaken Cottage)	Yes 37%	No 22%
	EDL019 (Eaton Bray Road)	Yes 31%	No 21%
	Orchard (next to Knolls View)	Yes 21%	No 28%

Further information about the Neighbourhood Plan can be found on the EPC website www.edlesborough-pc.go.uk

RESIDENTS DETAILED OBJECTION TO SLICKETTS LANE EDLESBOROUGH OUTLINE PLANNING APPLICATION

Dear Sirs

I refer to the proposed development at 5 Slicketts Lane and I would draw your attention to what it is like to be a pedestrian in Slicketts Lane.

A single track road with no pavements.

Please before granting consent for this application and encouraging more traffic onto Slicketts Lane spare a thought for the safety of the pedestrians who live in the village.

Your policy RA.36 is exactly what this is supposed to discourage.

Yours faithfully

Rod Carden-Lovell

OUTLINE PLANNING APPLICATION 16/02821/AOP LAND AT 5 SLICKETTS LANE EDLESBOROUGH OBJECTION TO CREATION OF NEW ACCESS ROAD

I have no objection to the creation of 10 new dwelling at the subject property. My objection is related to the proposed new access into Slicketts Lane

OVERVIEW

The Transport statement supporting the application has been cleverly written to mislead the reader into believing that the majority of traffic will turn right from the development heading North towards Brownlow Avenue and The Green. This is because that part of Slicketts Lane has two lanes and a narrow pedestrian footpath.

In reality 99.9% of all traffic in Slicketts Lane is Southbound towards the Ford, Dunstable and the M1 Motorway. The only traffic heading North is from the existing dwellings because Slicketts Lane is “No Entry” at its southern end.

In the morning rush hour Slicketts Lane is a “rat run” for commuter traffic heading to the M1 via Whipsnade.

All of Slicketts lane from Dove House Close to its Southern End is single carriageway with no pedestrian footpaths or refuge areas. It is so narrow that there is no room for a car or even less a van or lorry to pass a pedestrian without the pedestrian climbing up onto a steep bank. With a push chair or pram this is impossible.

The Southern end of Slicketts Lane where there is a sharp bend with no visibility and high banks on either side is a potential death trap for Pedestrians.

SPECIFIC OBJECTIONS

Policy GP.8 of AVDLP states *“the council will use conditions to ensure that any potential adverse impact on neighbours are eliminated or appropriately controlled.”*

By allowing this new access the council will be adversely affecting the safety of pedestrians.

It will be adverse to the amenity of the Grove (a Grade 2 Listed Building) as the Grove will have the noise of breaking and accelerating cars affecting a property which has single skin walls and hence no sound insulation. In addition Head Lights will shine straight into the windows of the Grove. This is directly contrary to Policy GP.8

Policy RA.36 *“the council will protect the characteristics of the countryside from traffic generation including the need to avoid traffic increases and routing unsuited to rural roads.”*

The council by permitting this new access will change the character of Slicketts Lane beyond recognition and will have actively encouraged additional traffic onto the most unsuitable road in



the village of Edlesborough. This is directly contrary to the intention of Policy RA.36

Policy 12 Encouraging Walking for short Journeys

There are no footpaths in Slicketts Lane nor any land available to build them to encourage walking.

Policy 17 Road Safety States *“we will work with partners to support road safety and reduce the risk of death or injury on the county’s highways”*

Permitting this new access will be actively

increasing the risk of death or injury contrary to this policy.

ADDITIONAL OBJECTION.

The Transport Statement supporting the application contains **outright Lies in paragraph 3.8**

It states **“the southern section of Slicketts Lane is approximately 3-3.5m wide single carriageway with passing places allowing two way traffic flow.**

Both these statement are untrue. In the entire southern length of Slicketts Lane the minimum width is 2.3M and at its widest is 2.8M. Most modern cars are around 2M wide including the wing mirrors.

Whilst walking up Slicketts Lane I have been accidentally clipped twice by Wing Mirrors when I have not climbed up the bank far enough.

There are NO passing spaces in Slicketts Lane other than the private drives of the existing residents.

To suggest that these are used as passing places is outrageous

ALTERNATIVE ACCESS

Why is there an application for a new access when there is an existing access readily available immediately adjacent and abutting the Subject property. This access is Taskers Row which is built to adoptable standards with a two way highway and two pedestrian pathways.

The probable answer to this is that the application for the new road is a “Trojan Horse” application which if granted will provide access to the other 10 acres in the ownership of the applicant thus enabling a further application for an additional 80 houses.

If this were allowed to happen it would then generate around 200 new traffic movements a day which would mean that Slicketts Lane would be a certain death trap for pedestrians at its southern end.

CONCLUSION

This proposed new road is unnecessary and dangerous, but, in the event that the Planning Committee should approve it the Council should mitigate the danger to Pedestrians by making Slicketts Lane a Cul de Sac. By doing so all traffic would exit Slicketts Lane to the North towards Brownlow Avenue and the Green where Slicketts Lane has two lanes and has a narrow pavement.

This action would have the added benefit of stopping the morning rat run.

Submitted by, Rod Carden-Lovell , 16 Slicketts Lane, Edlesborough





Edlesborough Parish Council News

Including Edlesborough, Dagnall and Northall

BCC Services Devolution

In April of this year Bucks CC devolved some of its services to Edlesborough Parish Council. This included the cutting of the grass verges within the 30mph limit, keeping some of the Rights of Way clear and maintenance of street signs etc. BCC has now informed EPC that they are unable to carry out some of their retained responsibilities as they have no funds for it.

Weed Spraying

EPC will now be taking responsibility for and funding weed spraying the gullies, starting with one initial spray this year, with two further sprays in 2017.

Rights of Way

Did you know there are 33 paths (footpaths not pavements) in Edlesborough, Dagnall and Northall totalling a length of 17608 metres? Many of these have been devolved to EPC for clearance and our contractor is working hard visiting each of these once a month to ensure they are kept clear.

Some of the paths require no maintenance (clearance) because of land management, i.e. farming, grass fields, arable land where routes will not need clearance.

There are still currently 7738 metres on the Bucks CC annual clearance schedule for Edlesborough, Dagnall and Northall. Bucks CC cut the paths in order of Parish population but they only have 2 operatives for all of their annual clearance work and can only do one cut per year.

If paths are not regularly walked and maintained we risk losing them. If you have concerns about the condition of a path please follow these simple steps to report it:

1. www.buckscc.gov.uk
2. Select "Streets and transport"
3. Select "Report a Problem"
4. Select "Rights of Way"
5. Enter the location of the problem. You will also be able to pinpoint the path on the map.
6. If possible upload a photo of the issue.
7. Once you have submitted a report you will be given a reference number.

Hedge Cutting

EPC acknowledges that it made an error in judgement in following, too closely, the guidance from the NFU, RSPB & RHS regarding not carrying out any hedge cutting throughout the villages between 1st April and 31st August. As a result of this the hedge cutting was brought forward to the middle of August. EPC will be revising the schedule in readiness for next year to ensure this year's issues do not re occur. The parish council also asks parishioners to ensure that the planting around the boundaries of their properties does not cause a danger or inconvenience to others.

Reporting Pavement, Pothole & Fly Tipping Issues

Please report any pavement issues, potholes, and Rights of Way issues to <http://www.transportforbucks.net/Tell-us> If it is safe to do so please take a photo of the problem and upload it when making the report.

Please report fly tipping to <http://www.buckscc.gov.uk/environment/waste,-recycling-and-treatment/fly-tipping/report-fly-tipping/> or call 01296 480771 or 0845 330 1856.

Edlesborough Green Roundabout

At the time of writing this report the roundabout on Edlesborough Green is still currently out of



use. Unfortunately, due to the age of the equipment many of the parts are now obsolete. There are also concerns that if the unit is taken apart to attempt repairs more issues may be discovered. In addition to considering cost implications of carrying out repairs EPC is exploring the options, one of which may be replacing the roundabout with a new piece of play equipment.



EPC understands that many children are disappointed that due to health and safety implications the roundabout is not used.

Parking on Grass verges & Kerbs

EPC wishes to remind parishioners that parking on grass verges causes damage to the grass and ground in addition to obstructing our contractor.

Parking on kerbs not only causes inconvenience and danger to pedestrians but damages the pavement. With the increasing number of budget cuts being made by Bucks CC it is becoming increasingly hard to get our pavements maintained and repaired.

We need to protect our pavements and grass verges from further damage caused by vehicles parking on them. **Please do not park on pavements or grass verges within our villages.**

Allotments

Rent collection will take place in Edlesborough Memorial Hall on **Saturday 8th October** (9.30am – 11.30am) for Edlesborough & Northall Allotments and at Dagnall Allotments on **Sunday 9th October** (9.30am – 11.30am). Rents Due: 20 pole plot £40, 10 pole plot £20, 5 pole £10.

In order for the Parish Council to save on administration expenses it would be very much appreciated if tenants could pay their rent on the specified date or arrange for them to be sent to the Clerk at 15 Summerleys, Edlesborough, LU6 2HR (cheques payable to “Edlesborough Parish Council”). Tenants wishing to make an online payment should contact the clerk for details on how to do this.



Due to the high clerical costs involved in collecting late allotment rents, the Parish Council have introduced a £10 late payment fee to be charged if full payment is not received by the end of October 2016.

Any parishioner interested in taking on an allotment should register their interest with the Clerk.

Speedwatch

The EDaN Traffic Management team are looking for volunteers to help with their new Sentinel device. If you have an interest in slowing down traffic in the villages or are concerned about Road Safety, please contact Louise Turner on 01442 843123 or by email at louiseanthorpe@yahoo.co.uk



Edlesborough Parish Council Meetings

The next Edlesborough Parish Council Meetings will take place as follows

Northall Village Hall, Thursday 20th October 2016

Edlesborough Memorial Hall, Thursday 17th November 2016

The meetings will commence at 7:30pm.

All Parishioners are welcome to attend all Ordinary Parish Council meetings and may ask questions, raise issues and give suggestions during the Open Forum before the formal start of the meeting. The full minutes of the Parish Council meetings are normally available to view on the website or from the Parish Clerk.

Edlesborough Parish Council Contact Information:

Clerk: Penny Pataky 01525 229358 Office hours Monday – Friday 10.30am – 2.30pm

Email: clerk@edlesborough-pc.gov.uk

Website: www.edlesborough-pc.gov.uk

Facebook: www.facebook.com/EDANParishCouncil



EDaN Beautification Team

CHRISTMAS IS COMING !

OK – we guess you might have noticed as much....

The EDaN villages are going all out to make sure it's the best ever, with newly planted Christmas trees located on Edlesborough village green and next to both Northall and Dagnall village halls. Edlesborough Memorial Hall will be decorated outside – so a really warm welcome into the village when you come home on those cold, dark nights in December – as well as the magical presence of our floodlit church on the hill. As a volunteer group, the Beautification Team are looking for assistance with some of the higher structural work, putting illuminations on the Memorial Hall is there a roofer/builder who is OK with heights in the village who could assist with this? Please contact me if you can spare us a few hours at the end of November. It would be much appreciated!

Tel: 01525220739 or email chris@brooklyns.org.uk

The new trees on the green and tree and bench at the top of Cow Lane are now sporting their sponsors' plaques, many remembering loved ones. We are very grateful to all those villagers who donated to this worth cause – we will all enjoy the trees for many years to come. Thank you so much everyone.

We have had to replace half of the wooden planters in the villages with recycled plastic ones – did you notice? – they look very good don't they? Unfortunately some of the wooden ones did not stand the test of time. At this point I would like to thank all the businesses which pay for the upkeep of 'their' planter – please

support these local heroes everyone! If you would like to water any near you which are looking a little dry, please don't hesitate! We should all take responsibility for the beauty of our villages..... and on that track ... we will be litter picking again this month so if anyone would like to join our happy team, please contact Lorna Cubbage on 220361 for details.

None of the above would be possible without the continued support of Edlesborough Parish Council who don't always get the appreciation they deserve!.... so thank you EPC for all those unpaid hours of hard work dedicated to the quality of life of all the folk living in these beautiful villages.

✍️Christine Yates



relax



let us
take care
of the sale or
rental of
your home



Christopher Pallet
Professional advice since 1973

Don't just take our word for it

"I have let properties through Christopher Pallet for over 10 years. I run the local pub and always refer people seeking to buy or rent to Colin and Linda because of the 1st class service I have experienced over the years. Their personal attention and "nothing is too much trouble" attitude makes them number one in my book."

Tom Dunnell

"My family wish to express our very grateful thanks for all your great help and consideration over the years letting and selling our properties"

Moller / Hawkins Family

"Thank you so much, I'll be sorry to lose you, you've restored my faith in Estate Agents. The nicest and most decent I have ever met. **** & **** estate agents need to take a training course from you !!

Fiona Newberry



Christopher Pallet
Professional advice since 1973

Zoopla
Smarter property search

rightmove
the UK's number one property site

Ombudsman
Services
Resolving Consumer Disputes

Call Linda or Colin on 01525 222333

ASPECT

YOUR LOCAL ELECTRICIAN
TOTTERNHOE
OVER 20 YEARS EXPERIENCE

ELECTRICAL

CONSUMER UNIT UPGRADES (FUSE BOARDS)
LIGHTING - INTERIOR, EXTERIOR & SECURITY
REWIRING
NEW INSTALLATIONS
TESTING & INSPECTION

ALL WORKS TO CURRENT WIRING & BUILDING REGULATIONS
PART P CERTIFICATED & FULLY INSURED



CALL STEVE ON
07976 283969 / 01582 665068
aspect@sparky.me



IRON OUT

Complete Laundry Service
Shirt Service
Duvet Cleaning
Ironing
Free collection & delivery from
home or office
01582 667332 / 07885 320042
Email: ironout@aol.com

Anne Johnson D.O.
Registered Osteopath

6 Moor End,
Eaton Bray

01525 221958
07957 250682



R.J.O'CONNELL BUILDING SERVICES

EXTENSIONS, PATIOS,
DRIVEWAYS, ROOF REPAIRS
AND PROFESSIONAL
DECORATING SERVICE

TEL: 01296 681323
MOB: 07855 236726

Will Kimberley Garden Services 01442 255784

Phone for a free no obligation written estimate
wkgardenservices@btconnect.com

- High hedges a speciality
- Fences erected and repaired
- General garden tidy up's
- In fact any job in the garden!

EXCEEDING EXPECTATIONS IS JUST PART OF OUR SERVICE



If you're **selling**, **letting** or **buying** a home, make it happen with your local estate agent



01525 220605 • info@giblinproperty.co.uk
www.giblinproperty.co.uk

THE WORKTOP SPECIALIST

DELIVERING OUTSTANDING QUALITY & SERVICE FOR ALL YOUR WORKTOP & JOINERY NEEDS FOR OVER 50 YEARS

- FREE HOME MEASURING SERVICE
- CUTTING & EDGING SERVICE AVAILABLE
- VISIT OUR BRAND NEW SHOWROOM

Abbey Gate, Boscombe Road,
Dunstable, Bedfordshire, LU5 4FA

Tel: 01582 668 973 Fax: 01582 608 227
Email: sales@dunstablelaminates.co.uk
Web: www.dunstablelaminates.co.uk



@DLaminates



Dunstable Laminates



Make a Will

AND LASTING POWERS OF ATTORNEY

YOU DECIDE who is to run your affairs, who gets what, guardians etc, not the State.

MINIMISE RISK of Inheritance Tax and the disinheritance of children.

Best Price Guarantee

from specialist Solicitors and professional Will Writers since 1999

FREE HOME VISIT

For a DAYTIME or EVENING appointment call

01525 220644

www.wisechoicewills.co.uk

MAKING A WILL
HAS NEVER
BEEN EASIER



Will Trusts
& Probate
Practice

A wise choice



**Café
masala**

Exquisite Indian Cuisine

We Cater for Office or Private Parties and don't forget to try our Sunday Buffet

10% Discount on all Takeaway Orders Over £12

Fully Licensed & Air Conditioned

Open Seven Days a Week

Hours: 12 Noon to 2.30pm & 6.00pm to 11.30pm

Tel: 01525 22 22 64

63 Bower Lane · Eaton Bray · Dunstable · Beds · LU6 1RB

email: taraque@hotmail.co.uk · www.cafemasala.com

alto window cleaning

For a professional service.....

- Window cleaning
- Conservatory cleaning
- Fascia & gutter cleaning

07876 594186

AARON FENCING

ALL TYPES OF DOMESTIC & COMMERCIAL
FENCING & DECKING WORK UNDERTAKEN

FREE ESTIMATES
FULLY QUALIFIED & INSURED
PERSONAL SERVICE AT COMPETITIVE PRICES

TEL: 01582 665779
MOBILE: 07798 927272

7 STATION ROAD, DUNSTABLE, LU5 4HS

Buy Direct From Our
Own Farm

Master Card

VISA

From Ivinghoe Turf

- Commercial & Domestic
- Small Orders Welcome
- Bark, Grass Seed & Fertiliser
- Laying Service
- Discount on Larger Orders
- Screened & Blended Topsoil
- All Year Availability
- Forklift Delivery Available



ROLAWN[®]
Approved Rolawn
Stockist

Family firm farming since 1949

ALL AREAS

Freephone :

0800 043 5061

www.ivinghoeturf.com

The Bungalow, Vicarage Farm, Ivinghoe, Leighton Buzzard

Established over 20 Years

Duncan Tomblin TREE SURGEON

Forestry Contractor • Tree Felling
Crown Reduction & Thinnings
Deadwooding • Hedge Cutting
Stump Grinding • Site Clearance
Private Agriculture Fencing Contractor
Chipper & Stump Grinding Hire
Digger Hire

FULL PUBLIC LIABILITY INSURANCE
FREE ESTIMATES

'The Best Choice For Your Tree'

TEL: (01525) 221946
MOBILE: (07802) 410728

12 Greenways, Eaton Bray, Beds

ARC Contract Services Ltd

- Painting & Decorating • Plastering
 - Wall & Floor Tiling • Door Hanging
 - Bathroom & Kitchen Installations
- 20 years experience

All work guaranteed and fully insured

Call Adrian : **01582 539179**

Mobile : **07789730580**



WESTROPE BROS.

LAWN MOWER SERVICES

ALL TYPES OF GARDEN MOWERS SERVICED

THE RYE, EATON BRAY

Tel: Eaton Bray 220587

Gas Boiler Servicing

Over 40 years experience

Have your boiler serviced by a **Gas Safe**
and **CORGI** registered engineer

Other services available:

Maintenance, repair and installation of all domestic gas appliances including LPG. Boiler installations, Landlord Safety Certificates and Power flushing.

Free Quotes, no call out fee, and free friendly advice on all of the above.

Edwards Gas & Heating Services

Eaton Bray



Tel 01525 220626

www.edwardsgasandheating.co.uk
stevethegas@orange.net



Vicky

The Dog Grooming Specialist
www.vickysdogcare.co.uk



With a reputation for offering an exceptional personal service



- Over 29 years of professional experience
- Trained at the London Academy of Professional Groomers to the highest City and Guilds standard
- Dorwest Veterinary Trained
- Member of the Pet Industry Federation
- Sympathetic and gentle handling of all dogs
- **FREE** Health check with every grooming session
- **No cages used! No cage dryers!**
- One to one personal attention.....loads of TLC

Where Dogs Come First!



Mobile: 07796 445416

Telephone: 01525 222775

Email: enquiries@vickysdogcare.co.uk



Committed to the highest standards of animal welfare and customer care

Over 30
Years
experience.
FREE
Quotes

Misty Double Glazing?

Over 30
Years
experience.
FREE
Quotes

**KEEP YOUR WINDOW FRAMES...
... WE JUST REPLACE THE GLASS!**

• UPVC • Aluminium • Or Wood

Because we replace just the glass the repair is a
Fraction of the cost of a complete replacement window.

BEFORE



AFTER



mistydoubleglazing.co.uk
QUALITY GLAZING SERVICES

01525 876808

WE ALSO REPLACE BROKEN...

• Glass • Handles • Hinges & Locks
AND REPAIR...Patio Doors & Conservatories!



Virtual administrative
support to businesses &
private individuals

Website hosting

Domain registration

Desktop publishing

01525 229695

Email:

enquiries@morenassociates.co.uk

www.morenassociates.co.uk

Absolutely Plastered

DOMESTIC/COMMERCIAL,
CLEAN AND RELIABLE SERVICE,
FREE ESTIMATES, FRIENDLY ADVICE



- * Plastering & Coving
- * Floor Screeding
- * Pebbledashing & Rendering
- * Dry Lining
- * Cornices & Mouldings
- * Insurance Work Undertaken

CALL NICK CONWAY ON

Mobile: 07751 830716

Tel: 01296 688981

6 Cotes Way, Wing, LU7 0RB

HPC Registered
CHIROPODIST & PODIATRIST



(Also Central Luton surgery - open 6 days)

Stuart Ball
Ceramic Tiler
Specialist

at all aspects of
Wall & Floor Tiling
Over 33 yrs Experience

01525 229381



Stephen D. Janes

(Established in 1982)

**CARPENTRY, JOINERY
KITCHENS FITTED
PROPERTY MAINTENANCE
TELEPHONE: 01525 220649**

**G & J Groundwork
Ring Garry**
**01582 477568
07949 118011**

**Fencing Panels • Blockpaving • Paths
Shingle Drives • Slabs • Paving
Steps • Gardenwalls • New Patios
Relaying • Soak Aways • Drainage
Free estimates or advice • References
www.gandjgroundwork.co.uk**

Neil Hodson Associates

*BUILDING DESIGN
STRUCTURAL ENGINEERING*

**PROFESSIONAL BUILDING DESIGN,
ADVISORY AND DRAWING SERVICES**

From plans for domestic extensions
to multi-storey offices, commercial
buildings and factories.

Structural surveys, site surveying,
advice on building defects and
Feasibility Studies

Planning Applications and Building
Regulation Consents obtained.

**24 HIGH ST TRING
Tel 01442 890894 OR
Edlesborough 222462**

J Able bathrooms

New Showroom NOW Open in Edlesborough

DESIGN

Free CAD design of your bathroom, This will help you a photo realistic finished plan of your design.

SUPPLY

Come and browse our display suites, This will help you decide on the perfect bathroom for your needs.

INSTALLATION

Our installations are of the highest standards!
We take pride in making you delighted with the finished result.

We have suites in a wide range of styles to suit your budget.
Drop in or ring to make an evening appointment at the showroom
or a home visit at your convenience.

Opening Times

Monday. 9am-5pm
Tuesday. 9am-1pm
Wednesday. Closed
Thursday. 9am-1pm
Friday. 9am-5pm
Saturday. 9am-1pm
Sunday. Closed

T: 01525 220043 M: 07891 449077

3 Summerleys, Edlesborough, Buckinghamshire, LU6 2HR
W: www.jablebathrooms.co.uk E: ableplumbing@hotmail.co.uk



EDLESBOROUGH TENNIS CLUB

Website by Jupiterwill

www.etctennis.org

Play tennis Have fun Socialise Feel good Join our club

Join via the website, or call Iona McLean-Hall on 01525 220562 for details

GENEROUS GIBLIN

Established in 2010, Giblin Property, in Wallace Drive, has quickly become the leading estate agent in the area with a reputation for professionalism and expert local knowledge. Owned and managed by local couple, Claire and Keith Giblin, the team are all local people with a real passion for delivering a superior service.

Claire and Keith Giblin are well known to the villages for their generosity towards, and their support of, local good causes. They are sponsors of EB Lions Football Club, Edlesborough Cricket Club and Cheddington Bowls, but this year they have gone a step further supporting this year's Carnival by making a donation of the fee from the sale of a house they sold in July.

The picture shows Claire Giblin handing over a cheque for £1,500 to Gordon Gray, Chairman of St Mary's Village Carnival Committee. As with all the money raised by the Carnival Committee this money will be used to contribute to St Mary's Church Fabric Fund, to the purchase of two defibrillators (so that all villagers have access to one within their village) and to local good causes.

The Carnival Committee is enormously grateful for this generous donation by Giblin Property and for the support of many other local businesses in and around our villages. Altogether the Carnival Committee has been able to donate this year £14,000 to local good causes (see separate article) bringing the total raised by the event since the millennium to £192,450.

Gordon will be pleased to hear from other businesses willing to support next year's Carnival either in a big or small way; contact him on 01525 220136. Next year's carnival will be on 1st July with the theme 'Transport'; our principal charities will be 'Macmillan Cancer Support' and 'Hearing dogs for deaf people'.



ILLUSTRIA

Kennels & Kathotel

Offering your pet a fully licensed Dog and Cat boarding service.

Purpose built Dog kennels

Individual Cat chalets with outdoor exercise runs

All in pleasant country surroundings

01582 ~ 665343



ILLUSTRIA
Springfield Road
Wellhead
NR Dunstable Beds
LU6 2JT



Proprietors

Mick, Denise and Michele Garrod



Live a healthy & active life

Free 10 minute advice chats with our Chartered Physiotherapists & HCPC Registered Podiatrists

PHYSIOTHERAPY
PODIATRY &
CHIROPODY
PILATES
ACUPUNCTURE
SPORTS INJURIES
MASSAGE
WOMEN'S HEALTH
& PREGNANCY
CARE

St. Judes
physiotherapy, health and well being

01525
377751 
enquiries@stjudesclinic.com
www.stjudesclinic.com

N.D.S.

General Building & Plumbing (25 years experience)

- Roofing; Installer of UPVC guttering, soffits & fascia boards
- Kitchens & Bathrooms fitted
- Property Maintenance
- Fencing • Patios & Block Paving
- Gazebos • Garden Structures

Tel: 01525 221470

Mobile: 07946 626564

FREE ESTIMATES

...

**ALL WORK CONSIDERED
NO JOB TOO SMALL**

For a top quality
decorating job call

Marc Flack

01525 223166

Trading locally for 10 years
References are available



TIME TO MOVE?

**Don't be alarmed,
we're here to help!**

Established in 1999

e: info@plummproperty.co.uk

Five Good Reasons to use **Plumm Property**

Pprivate Offices - direct savings to you on fees

Local Knowledge - from our highly experienced team

Unrestrictive contracts - no lengthy tie-in periods

Marketing to outside area - attracting London buyers

Managing all your needs with a 1st class professional service

From Offer through to Completion of Sale



01296 660230

www.plummproperty.co.uk

Message from the Munn Family in Dagnall

We all wanted to say a heart-felt thank you to everybody who has helped us through the difficult time of losing 'Mum'/ 'Grana'/ 'Doris'/ 'Doll' this Summer. We have been completely overwhelmed by all of your thoughtful words and cards- they spoke volumes about the kind-hearted lady who played such a big part in all of our lives. It was incredible to see so many people at her funeral, and was a real testimony to the huge part she played in the village. We all miss her hugely, but our loss has been made that little bit easier by the kindness and generosity of everybody. Thank you.



St Mary's 100 Club

August 2016 Winners

1st prize – Rosemarie Allen

2nd prize – Peter Bennett

3rd prize – Reg Fossey

The September draw for St Mary's 100 Club was made by some of those who attended this month's coffee morning in the church.

The lucky prize-winners are:

1st	#58	Joan Horne	£60.00
2nd	#33	Patricia Quartermaine	£36.00
3rd	#75	Alison Walley	£24.00

I was recently asked why the prize amounts aren't always the same. It's simple really. The more members that we have, the bigger the prize pot we have. Currently our members have 120 "balls in the draw" between them, and this means we have a prize pot of £120. The 1st-prize winner receives 50% of the pot (£60 this month), the 2nd-prize winner receives 30% (£36), and the 3rd prize winner receives 20% (£24). As always, we'd be only too delighted to have more entrants, and so whether you'd like to join the fun (for just £2 per month) or buy additional entries, then please contact me (Gary Freeman) for an application form – gary@old-wrestlers.demon.co.uk

Good Luck!!"



Dagnall Community Choir

Well Autumn is drawing nearer which means the choir, after months of practising diligently throughout the warm summer evenings are now ready to unleash our music on the unsuspecting public, well not quite unsuspecting as hopefully the people attending our forthcoming concerts will at least have some idea of what to expect, which is an evening of varied and popular musical pieces presented by this wonderful community choir. Although based in Dagnall the choir now boasts members from all the local villages plus Dunstable, Luton, Hemel Hempstead and

beyond. As you can see, you do not have to be from Dagnall to be part of the choir. If you enjoy singing and have never been part of a choir, but would like to “give it a go”, why not come along on a Monday evening to All Saints Church, Ringshall Road, Dagnall, HP4 1RL at 7.45 where you will be made more than welcome. We would also welcome experienced singers to join us as well.

Our next concert will be at Eaton Bray Village Hall on Saturday 15th October at 7.30pm. Tickets, priced at £8.00 which includes a complimentary glass of wine or soft drink, are available from the

box office on 01525 220189, any member of the choir or on the door on the evening of the concert. Following on from this concert we will also be taking part in the Eaton Bray Poppy Prom on Saturday November 12th at St Mary's Eaton Bray.

Our Christmas Carol Concert will take place on December Sunday 11th December at 3pm at Dagnall Village Hall. We have been assured Father Christmas will again be dropping in to pass out gifts for the children, Further details on this concert will be announced later and you will also be able find further details on our website, which is dagnall-community-choir.co.uk

Dagnall Community Choir

IN CONCERT

AT
EATON BRAY VILLAGE HALL
ON
SATURDAY 15th OCTOBER
AT 7.30pm

TICKETS ARE AVAILABLE FROM THE BOX OFFICE

TEL: 01525 220189

MEMBERS OF THE CHOIR OR ON THE DOOR

Ticket price £8.00*

*INCLUDES A COMPLIMENTARY GLASS OF WINE OR SOFT DRINK

**DO COME AND ENJOY AN EVENING OF POPULAR MUSIC
PRESENTED BY YOUR LOCAL COMMUNITY CHOIR**

**WE
CELEBRATE**

**WE ARE
MACMILLAN
CANCER SUPPORT**



**CARITAS CHRISTMAS
SPECTACULAR**

11 DECEMBER 6PM. St Mary's R.C. Church,
West St, Dunstable LU6 1NY. Christmas
Concert by award-winning Caritas
Harmony with songs by Hadrian Academy
Children's Choir. Refreshments available
from 5pm

Tickets £8 under 12s free. For on-line tickets and more
information visit www.caritasharmony.co.uk or call
Jackie Howe 01582 599520. All welcome!



**CARITAS
HARMONY**
LUTON ACADEMY OF MUSIC

Organised in aid of Macmillan Cancer Support, registered charity in England and Wales (261017), Scotland (2022907) and the Isle of Man (306). Also operating in Northern Ireland.

Community Carol Service
at the Village Hall, Eaton Bray

Sunday 27 November
4pm

Tickets: £1 each

(required for health and safety reasons because of last year's success)

Available from Hilary Chadwick (Envoy)

07932 057490;

hilary.chadwick@salvationarmy.org.uk

Featuring:

**School Choir, Community Band,
Children's Nativity**

Super Star

Profits from the evening to:



The Salvation Army :

A Church & Registered Charity

259322



Unique and unusual
Christmas gifts for
the whole family
all under one
beautiful roof



STOWE HOUSE

Christmas Gift Fayre

Saturday 29 and Sunday 30

October 2016

10.00am - 5.00pm

Admission £5.00 per person

Children under 14 with adult supervision go free

Includes entry to the magnificent State Rooms of
Stowe House plus free parking. Last admission 4.00pm.

For enquiries and group bookings please call
01280 818282 or email events@stowe.co.uk

Stowe House, Stowe, Buckingham MK18 5EH

www.stowe.co.uk/events

The gift fayre is run by Stowe Enterprises Limited on behalf of Stowe House





Charles Hill Garden Services Ltd

Design - Build

Est: 2006

A professional company working with all your gardening requirements from design to complete landscape.

*NCH in Horticulture
City & Guilds in Garden Design*

Call Charles to discuss your garden plans today.

Mobile: 07773723236

Office: 01525 242065

charles@charleshillgardenservices.co.uk

accounts@charleshillgardenservices.co.uk

www.charleshillgardenservices.co.uk

fitness 4fun



Get those muscles working! Tone and strengthen arms, legs, bums and tums – you'll look and feel great.

Why not give it a go? Only £5 per week for one hour of fun fitness. Pay-as-you-go, come when you can.

Come along and join our friendly group.

Everyone welcome.

No need to book – just show up.

What: Fitness4Fun with Kay

Where: Edlesborough Memorial Hall

When: Every Friday, 10:00-11:00 am

**ADRIENNE'S
PRIVATE HIRE**



Call for a **FREE** quotation
Book early to avoid disappointment
Very competitive prices

Airport Transfers
& Private Hire
07980 039715

Our executive Cars, 6 seater Minibuses and lady driver are all available

INFO@HOTACADEMY.CO.UK

'WICKED' SUMMER WORKSHOP

WEEKLY CLASSES

HOT ACADEMY

FOR AGES 3-18YRS IN DUNSTABLE

STAGE COMBAT ACTING WEST END TUTORS
DANCING SINGING

BOOK NOW! **07886 385799** LIMITED PLACES!

GRASS ROOTS GARDEN MAINTENANCE



TREE SURGERY, HEDGE PRUNING,
SELECTION SUPPLY AND PLANTING OF
TREES, SHRUBS AND HEDGES.
REGULAR MAINTENANCE/ONE-OFF JOBS
(Fully Insured)

Brian McMahon NCH (Arb)
01525 221960



Edlesborough Flowers

Flowers, Gifts, Jewellery
& More...

2 High Street,
Edlesborough,
LU6 2HS
Tel: 01525 221920

Our generous sponsors
making the event possible



THE GREAT 2016 EDLESBOROUGH HALLOWEEN

5K FUN 1K FOR USs RUN

SUNDAY 30th OCTOBER

1.00pm EDLESBOROUGH GREEN

ADULTS £10 CHILDREN £5 FAMILY TICKETS

BBQ RAFFLE OPTIONAL FANCY DRESS CAKES

KID'S ACTIVITIES MEDALS REFRESHMENTS GAMES

We need to raise as much money as we can for the building of the Edlesborough Green Pavilion. Let's do our best to create and build a legacy for the future of our village. Strictly 75 runners so get your application in now.

Email us for your **application form**:
edlesboroughrunners@hotmail.com or call
07747 618825 for more details.

Follow us on Facebook for updates:
www.facebook.com/TGEFR

Volunteers & marshalls needed! If you'd like to support us with this, please get in touch.

Registered charity no. 1160939

Devilishly
designed by
Aubergine
aubergine262.com

Music at St Mary's

POPPY PROM

12 November, 7.30pm

St Mary's, Eaton Bray

**A celebration of 'Remembrance' and
'The Last Night of the Proms'**

**featuring: Dagnall Community Choir, St Mary's Choir,
South Beds Concert Band, plus soloists Min-Min
Peaker and Cheryl Hawkins**



Box Office: 01525 222283

**Tickets (£12.50 & £10) will go fast so hurry to book
your seats!**

By kind permission of Samuel French

FRONT ROW
Presents
The
Farndale Avenue
Housing Estate
Townswomen's Guild
Dramatic Society's
production of
"Macbeth"



A comedy
by David McGillivray & Walter Zerlin Jr.

Thursday – Saturday, 20th – 22nd October 2016
7.30pm
Eaton Bray Hall

Licensed bar from 7.00pm

Tickets £7.00
Box office: 01525 222283

The 22nd ! **Village Hall Quiz** **Saturday 29th October**

Come and help us celebrate this momentous occasion

This fabulous quiz with quizmaster Keith Blackburn will still include a **Free** supper with the questions. Bring you own glasses and drink.

7.00pm for 7.30pm

Just £9 per person. Teams of up to 8 people
Fabulous prizes!

This event is organised jointly by Eaton Bray Village Hall Fundraising Committee and Eaton Bray Tennis Club

For bookings contact Ross 221411
ross.bagni@btinternet.com

Come for Coffee **at St Mary's**

For a warm welcome and
a cheering cuppa
each month in
St Mary's Church
Eaton Bray
10.30am - midday

Next Coffee Mornings:
Saturday 1st October
Saturday 5th November



THE FILLING STATION

A relaxed, informal way of expressing the Christian faith. Using mid-week monthly meetings the Filling Station has a particular focus on rural communities and we find that the local church is strengthened and helped in many ways. We provide refreshments, authentic worship from guest worship leaders, keynote speakers and a relaxed social atmosphere. Everyone is welcome. Do come and bring your friends.

4th Tuesday of each month at 7.30 p.m.

Bellows Mill, Eaton Bray, Dunstable, Beds. LU6 1QZ

Speakers:

25th October: Richard Fothergill, Founder and Director of Filling Stations, A pioneer, he has led churches in London, Bristol and South Africa. 'A God Who is With Us'

22nd November Ruth Paddon, Forerunners International UK. Ruth is sure to bring an encouraging Biblical 'word' relevant for us.

No meeting in December

24th January: Anne de Leyser, Ffald-y-Brenin. Local Houses of Prayer.

Local contact: Diane 07815 895501

To find out more visit www.thefillingstation.org.uk



**THE
FILLING
STATION**

St Mary's Christmas Fair

Saturday 19 November 2016, 12.00 - 3.00pm

Eaton Bray Village Hall 50p admission adults

Children free!

Come and visit

Santa and Mrs Claus

with their elves in their
Christmas grotto at this
year's Christmas Fair!

With lots of other stalls to browse for your Christmas presents, or just to treat yourself! Delicious bacon butties and other refreshments on sale all afternoon.

For more information, or to book a stall, please ring 01525 852368.





Back by Popular Demand
Saturday 8th October

Edlesborough School presents:

Chesham Comedy Club

for an evening of laughter, fun and beers with comedians:

Headline Act - Ninia Benjamin Star of BBC2's "Three Non-Blondes"

Described by the Voice Newspaper as "the Comedy Assassin"

Comedian of the Year 2015 - L J de Funk "A self-styled New York gangster, he is loud, brash, and full of energy."

Double Act - Brian & Krysstal "Brian Damage is a legend on the London Comedy Circuit....cracking deadpan act." StandUpCom Magazine

And your compere for the evening, Kevin Shepherd "He switched between anecdotal and punchline based humour with ease, and left us eager for more." BBC

Doors open at 7.30pm for an 8pm start.

There will be a licensed cash bar serving drinks and snacks.

Tickets £10 Please book your tickets in advance by calling
Emma Ogden-Trevor on 07811117099.

Seats are limited so please book now to avoid disappointment.

All funds raised will go to Edlesborough School

EATON BRAY PARISH COUNCIL

Speeding is a problem in this village

Why don't you become a volunteer with Speedwatch
and help us to reduce the menace of speeding.



If you would like to get involved in trying to slow down traffic in the village and are concerned about road safety then please contact the Parish Clerk – email clerk@ebpc.co.uk.

Thank you for your support



Eaton Bray Methodist Church

We were glad to welcome our Circuit Superintendent Minister, Julie Bradshaw, to our pulpit at the end of July. Basing her sermon on the parable of the rich fool, she encouraged us to be open to change, trusting for our security in God and his love. Rev Nigel Wright led our lively August Cafe service which focused on hope, especially drawing hope from prayer and the study of the Bible. On the third Sunday Rev Wallace Edwards gave us an inspiring sermon on the 'journey of faith', reminding us that we are here to help each other along the road and suggesting how we can respond effectively to the challenges we meet along the way. Our friends from Edlesborough Methodist Church shared this service with us and on two other August Sundays, welcomed us as guests to their services.

August saw our final services with Rev Nigel Wright due to the South Bedfordshire Circuit reorganisation. It is always sad to say goodbye to a good friend and we thank him warmly for his caring ministry over the past 6 years. We are now joining a village grouping with six other villages and look forward to welcoming Rev Nigel Bibbings as our new minister.

Dates for your Diary:

Cafe Community

Saturday 8th October 2016 11am - 1pm

Saturday 12th November 2016 11am - 1pm

We will be delighted to see you if you come to join us for a cup of tea or coffee and/or a light lunch.

**THE BEDFORDSHIRE AREA GROUP
OF THE ASSOCIATION OF 16MM
NARROW GAUGE MODELLERS
PRESENTS**

STEAM IN BEDS "2016"

**LARGE SCALE NARROW GAUGE
MODEL RAILWAY SHOW**

**FEATURING NARROW GAUGE
LAYOUTS RUNNING 16MM LIVE
STEAM LOCOMOTIVES WITH
FULL TRADE SUPPORT FROM
SPECIALIST SUPPLIERS**

SATURDAY 26 NOVEMBER

**10.00AM TO 4.30PM - ADULTS £5.00
ACCOMPANIED CHILDREN UNDER 16 FREE**

VENUE

**EATON BRAY VILLAGE HALL
AND ST MARY'S CHURCH,
CHURCH LANE, EATON BRAY
DISABLED FRIENDLY**

REFRESHMENTS AVAILABLE

**FOR FULL DETAILS SEE OUR WEB SITE:
WWW.BAG16MM.ORG.UK**

The Salvation Army, Booth Place, Eaton Bray Weekly Activities



Sunday

Footprints (Sunday School) 9.45-10.45am

Morning Worship 11am

Messy Church 3-5pm

(Last Sunday of the month)

Songs of Praise 4pm

(3rd Sunday of the month from May to Dec)

Tuesday

Coffee Morning

(Alternate weeks) 10-11.30am

Music practices (all welcome) 7.30-9pm

Wednesday

Home League 2.30-3.30pm

(Ladies Mtg but all welcome)

Champions Challenge Club *(term time)*

(Ages 5-10 years) 5.45-6.45pm

Thursday

Parent and Toddler Group

(Term time) 9.30-11.30am

Girls' Night Out

(1st Thursday of month) 7.45pm

Sewing & Craft Bees

(2nd Thursday of month) 7.45 pm

Ladies Fellowship

(Last week of month) 7.45pm

For further details please call Envoy Hilary

Chadwick. T:01525 222087 / 07932 057490

E: hilary.chadwick@salvationarmy.org.uk

W: www.salvationarmy.org.uk/eaton-bray



VILLAGES' SCRABBLE TOURNAMENT

You may have seen recently that a man from Chingford won the 2016 Scrabble World Championship after scoring 176 points with the word BRACONID (a parasitic wasp). We're not expecting anyone locally to emulate such a score, rather this proposed Villages' Scrabble Tournament is an opportunity for social players to meet new people with a small element of competition to spice things up a little.

The tournament will take place in the New Year once the number of interested players is known. Entrants will be arranged in leagues and the players in each league will play one another on a round-robin basis. Games will be played in your own homes at a mutually convenient time so, even if you are housebound there is no reason you cannot participate as people can come to you.

After the round-robin games have been completed (probably around the end of February) the winners of each league will compete on a knockout basis, when things will probably get a little more serious, until we find a winner sometime around Easter. If you enjoy playing Scrabble and would like to take part in this fun, social activity then get let Gordon Gray know, ideally by Email on scrabble@gordongray.plus.com or by phone on 01525 220136. Please provide the following information: Your name, address, telephone number and email address plus an estimate of the score you typically get in a game. There will be a £5 entry fee to cover costs, to provide a small prize for the winner and to raise a little money for St Mary's Church.

Appledown's Rescue Dog of the Month

This striking looking lad is Storm a lurcher born in 2010. He is a friendly, lively boy who will need a home with owners who have the time and energy for an active dog. Storm is good with other dogs but would not be suitable for a home with cats or other small pets. He will need to be house-trained.

If you could offer Storm or any of our other dogs a loving and secure home please call in at the kennels any day between 10 a.m. and 4 p.m. or phone for more details. Please note that there are restrictions on

rehoming dogs to families with children under seven years of age. Full details of the rehoming process can be found on our website, or please contact the kennels.

Appledown Rescue and Rehoming Kennels Harling Road, Eaton Bray LU6 1QY

Call 01525 220383 or e-mail: appledown.kennels@btinternet.com

Website: www.appledownrescue.co.uk Follow us on Facebook & Twitter!



St Mary's Village Carnival 2016

Huge thanks to all who contributed to the success of this year's Carnival. This year the Carnival Committee will be able to distribute £14,000 bringing the total raised by the Carnival Committee since the millennium to £192,420. This is a record total, so congratulations to everyone involved

A meeting was held on 5th September and in response to various commitments and requests the following distribution was agreed:

St Mary's Fabric Fund	£7,000	2 Defibrillators	£3,500
1st E Bray & Edlesborough Scout Group	£300	Curtain Call	£130
Dagnall School	£150	Dagnall Under Fives	£100
Dagnall Village Hall	£200	Downs Heart Group	£120
East Anglia Air Ambulance	£200	Eaton Bray Methodist Church	£100
Eaton Bray Parish Council	£125	EB Academy	£150
Edlesborough Parish Council	£150	Edlesborough School	£150
Expedition - James Brock	£100	Friends of the church on the hill	£100
Good Neighbour Scheme	£150	Leighton First Responders	£200
Pitstone and Ivinghoe Museum Society	£150	Revelation majorettes	£100
Riding for the disabled	£150	Salvation Army	£100
Shooting Stars majorettes	£100	Sparx	£200
Taskers Row Social Club	£125	Totternhoe Lower School	£150

Next year's Carnival will be on 1st July. Our principal charities will be 'Macmillan Cancer Support Leighton-Linslade Fundraising Group' and 'Hearing Dogs for Deaf People'; the theme will be "Transport". If you would like to contribute to the Carnival Committee for 2017 then please speak to Gordon on 220136.

Front Row Theatre Group

Front Row are pleased to announce their next production, a comedy by David McGillivray and Walter Zerlin Jr. entitled "The Farndale Avenue Housing Estate Townswomen's Guild Dramatic Society's Production of "Macbeth", which will be performed at the Eaton Bray Village Hall on Thursday – Saturday 20th -22nd October 2016 at 7.30 pm.

The Farndale Avenue Housing Estate Townswomen's Guild Dramatic Society ladies mount yet another assault on the classics with a startlingly original production of "Macbeth" staged to get them to the Welwyn Garden City Finals. Under the carefully mascara'd eye of adjudicator George Peach, all events conspire hilariously against them.

We welcome the return of Phil Baker as our director for this production. Phil will be ably assisted by Jane Clark

Book the dates in your diary now, for more great evenings of local live theatre.

Box office is now open – call 01525 222283 to make your booking.



**Barking Mad
Dog Walking**

Local dogs walks available

One dog - Half hour - £6
One Hour - £10

Two dogs - Half hour - £10
One Hour - £15

Contact Lucy on 07977711350
(Eaton Bray)
Kate on 07984874899
(Markyate)

Make your house a home with blinds and awnings from

**VANSAR
BLINDS**



www.vansarblinds.co.uk

- Free No Obligation Measuring And Quotations
- All Blinds Made To Measure
- Choose In The Comfort Of Your Own Home Or Workplace
- Family Run Business
- Large Range Of Quality, Affordable Fabrics And Colours To Choose From



Call: 01525 220477 or 01582 699565 E: sales@vansarblinds.co.uk

Financially Prudent (IFA) Ltd

23 The Green, Edlesborough, LU6 2JF

Your local IFA for impartial Personal or Corporate advice on:

- Mortgages
- Pensions & Annuities
- Insurance
- Savings & Investments

Call Paul Pearce on 01525 220480 or email paul@finpru.com for a no obligation initial discussion



Financially Prudent (IFA) Ltd is authorised and regulated by the Financial Conduct Authority

J.G.S. Metalwork & Son

**Specialists in Gates
& Gate Automation**

Access Control • Security Grilles • Railings
Balconies • Stairwells

www.jgsmetalwork.co.uk

Call in to discuss your ideas

High Street, Edlesborough LU6 2HS

Tel: 01525 220360 Fax: 01525 222786

Spinney Landscapes
& Gardening Services

All Aspects of Grounds Maintenance

Weed Control • Driveways & Patios
Lawn Care & Scarifying • Fencing
Turving • Tree Work
Snow Cleaning & Gritting

Tel: 01582 872084 Mob: 07876 500292

Email: chambo.1628@btinternet.com

Dagnall Church of England School



A Buckinghamshire co-educational school

For 4-7 year olds



Dagnall Church of England School offers small classes, an exciting curriculum, excellent care and good links with the local community



Ofsted 2011
"Pupils are confident,
very happy at school
and curious to learn."



Tel: 01442 842473
www.dagnall.bucks.sch.uk



E-mail:
office@dagnall.bucks.sch.uk



David Brown

Window Cleaning

Quality Reliable Service.

Regular, Occasional or
Single Visits.

Friendly Free Estimates.

Facias, Guttering & Conservatories.

External Cleaning & Maintenance.

Fully Insured.

Phone 01582 472113

Mobile 07534 837073

D & E HINES

High-Class Butchers

Quality Beef, Pork & Lamb

Grade A Poultry

BBQ & Sausage Speciality

Renowned for 'Bunkers Sausages'

Telephone: 01525 220413

98 High Street, Eaton Bray



GENERALMECHANICALSERVICESLTD

VEHICLE SERVICING AND REPAIRS



**MOTs • MOT REPAIRS • SERVICING
DIAGNOSTICS • TRACKING • AIR CONDITIONING
TYRES • CAMBELTS • COLLECTION & DELIVERY
WELDING & FABRICATION • BATTERIES**

All vehicles - all mechanical work!

1 HONEYWICK LANE, EATON BRAY, LU6 2BJ

reception@general-mechanical-services.co.uk

www.general-mechanical-services.co.uk



01525 222876



Peace of mind for motorists.



Protecting what's important

MJ Security Systems Ltd

MJ Security Systems

Contact Us For More Information

Unit 4, Arianne Business Centre,
Blackburn Road,
Townsend Industrial Estate,
Houghton Regis,
Bedfordshire,
LU5 5DZ

Please call for a free quotation

T: 0800 0856126

E: info@mjsecurity.co.uk

W: www.mjsecurity.co.uk



We also specialise in:

- IP Cameras
- Intruder Alarms
- Access Control
- CCTV & Monitoring
- Door Entry
- Covert Cameras
- Security Lighting



FROM ONLY
£439.95+VAT
Products and
Installation



Kit includes:

1 x Wireless Door Contact, 2 x Wireless
P.I.R., 1 x Wireless Sounder, 2 x Remote Set
and Unset Fobs.

Stylish • Wireless • Secure

M . P . S

Maintenance & Property Services

- KITCHENS AND BATHROOMS
- PAINTING AND DECORATING
- PROPERTY RENOVATIONS
- PLASTERBOARDING
- FENCING

FREE ESTIMATES
NO CALL OUT CHARGE
NO JOB TO SMALL
LOCAL

Contact:- Julian

07958 306301

E-mail – mps@mustoe.co.uk
www.mustoe.co.uk

Leighton Aerials

Established 1970

For all your aerial
and satellite needs
call Colin on

01525 374742



Edlesborough School & Pre-School



Pupils' behaviour is outstanding...

The environment for learning is exciting and stimulating...

A real strength of the school is pupils' attitude to their learning .

Ofsted 2013

For more information about our School, Pre-School and Before and After School facilities, visit our website at www.edlesborough.bucks.sch.uk

Please contact the school on 01525 220431 to arrange a visit.

S M Reilly & Son Ltd

General Builders & Contractors



Turning Your House into
a Home Since 1987

All aspects of the building trade undertaken

- *Extensions*Hard Landscaping*
- *Windows, Doors & Conservatories*
- *Fitting of Aluminium Bi-fold Doors*
- *Kitchen & Bathrooms*Drives*
- *Loft Conversions*

01525 221740 07970 637511



JAMES FALCON-CROSS

LANDSCAPING AND OUTDOOR LIVING DESIGN

**ALL ASPECTS OF LANDSCAPING
UNDERTAKEN INCLUDING
FENCING, TURFING AND PATIOS**

**TIMBER STRUCTURES
DESIGNED AND BUILT**

VEGETABLE AND HERB GARDENS

01442 843258 / 07769 901325

ONECROSSFALCON@GMAIL.COM

eww

E W Wallace & Co
Chartered Accountants
Tax Consultants
Business Advisors

Small business specialists serving
Beds, Bucks & Herts

- Annual accounts
- Tax returns
- Self-employed
- Limited companies
- Small business specialist
- Sage Accounts expertise
- Prompt, personal service
- Value-for-money fees
- Free initial consultation

01525 220826

www.ewwallace.co.uk

Eaton Bray Village Hall



- ❖ Superb venue for weddings
- ❖ Fantastic place for parties and dances
- ❖ A must for children's parties, can fit the bouncy castle inside if weather dictates!!!
- ❖ Keep fit groups
- ❖ Ideal for Club meetings or functions
- ❖ Equipped to support theatrical productions and film shows
- ❖ Large car park
- ❖ Large Kitchen with a six ring cooker, large refrigerator, hot trolley, crockery etc.
- ❖ 3 separate areas to hire to meet your needs and budget
- ❖ For more information and brochure please ring Norman on 07975 797202



WAGGING

wonderful dog grooming

Here to take care of your mucky pup!

Your local dog grooming service in Eaton Bray

1-2-1 care for your dog

NO cages!

07580 343396

www.waggingwonderful.co.uk

info@waggingwonderful.co.uk

James B Chadburn FBHI

Fine Antique clocks & Barometers

Specialist in repairs & restorations.

Valuations & clock finding service.

Advice & assistance on formation & disposal of private clock collections.

Quality clocks/barometers Bought & sold.



Telephone 01525 221165

Mobile 07790 000629

E-mail: info@jameschadburn.com

NG AUTOS



MAKING YOU AND YOUR CAR HAPPY

CAM BELTS • MOT'S • MOT REPAIRS • HEAD GASKETS
AIR CONDITIONING • RECOVERY/BREAKDOWN
DIAGNOSTICS SERVICING • BRAKES • SUSPENSION
CLUTCHES • GEARBOXES • TYRES • WHEEL BALANCING
WHEEL ALIGNMENT COLLECTION & DELIVERY

CALL NICK OR GARY

01525 220850 OR 07972 198615

**SPARROW HALL FARM, LEIGHTON ROAD,
EDLESBOROUGH LU6 2ES**



Reception



Service Bays



MOT Station

D.A. Windows Doors & Conservatories

23 Church Lane, Eaton Bray, LU6 2 DJ

Tel: 01525 221051 Mobile: 07807 798387
email: mimcavinder@hotmail.com

AUTHORISED
SWISH INSTALLER
WITH OVER 20
YEARS
EXPERIENCE

Installation of PVCu windows, doors and conservatories
Replacement glass units and window maintenance

QUALITY PRODUCTS - QUALITY WORKMANSHIP -
REASONABLE PRICES



General building
maintenance work
also undertaken
including:
Facades and Soffits
Gutters
Fencing

Accredited Member of the
Incorporation of Plastic
Window Fabricators and
Installers Limited



The Gentleman Gardener

Let your local RHS qualified gardener make your garden beautiful, from simple garden maintenance to total redesign of your garden.

Please call Barry on
**01525-222451 or
07541196384**
to pop round for a free chat.



C H BUILDERS

cwhawkes@tiscali.co.uk

Tel: 07989 357231

Local builder with over 35 years experience in the trade, specialising in:

- Kitchen fitting and alterations
- Extensions
- Loft conversions
- Renovations

Recommendations available

Please contact Chris to discuss any requirements for a free quotation

McTimoney CHIROPRACTIC



Margie Craib BSc BHSI DC AMC MMCA
Human and Animal Treatments

Ashridge Farm, Ringshall, Berkhamsted, Herts HP4 1ND
Telephone: (01442) 842729

General Chiropractic Council Registration No. 293

CHIMNEY SWEEP

Local & Est. Brush n Vac
Friendly, Clean and Efficient
Call **KEVIN HING** on
Tel: 01525 371592
Mob: 07940 528897
www.khing.co.uk
Member of NACS



Eaton Bray Cricket Club

Eaton Bray CC have won their first League title since 2009, with a weekend washout against title rivals Biddenham CC ensuring

them enough points to be crowned champions. The season was a hugely successful one for the club in general, with the 2nd XI sealing promotion from Division 6 of the Four Counties Cricket League and further growth in the youth section of the club.

The 1st XI benefitted from an unbeaten start to the season, going 9 matches until they tasted defeat, and although that culminated with a 7 match winless streak, the brilliant start kept enough points in the bank to seal their crown.

With a change of captaincy at the start of the season, emphasis was placed on youth, which also allowed older players freedom to play their natural games without the burden of leadership. Captain Josh Peacock looked to bring a team together that he always felt were the best individually, but just needed a change in approach to become more successful. 'We had a team meeting at the start of the year, when we came up with a number of team rules, which we ultimately felt could see us win the league. We became smarter in our approach, our training and our conduct, which paid dividends. I knew if we tinkered with a few small details, these were the 1%-ers (a term derived from reading Clive Woodward's book on leadership), that we would be ahead of all other teams in the league.'

Two matches stand out as a stark reminder as to how they achieved their success. New Bradwell away, when a Jaco Jacobs rearguard saw them escape almost certain defeat with a draw and the win away at New City CC early in the season, both during that unbeaten run. 'Jaco is your attacking-type of batsman, and although destructive, will be the first to admit he gives away his wicket away too easily at

times'. Not on this occasion however, with the team struggling at 160-9 in pursuit of 254, Jaco batted out 21 overs to see us to 215-9 and safety, gathering 13 points for our efforts, showing the now engrained resolve that made the team togetherness such a poignant factor. Only a few weeks earlier, the team beat New City convincingly for the first time since their opponents had been promoted to the top division, back in 2011. 'We just kept finding ways to lose or badly draw against them in the past, says Peacock, but not this time'. A brilliant 69 from Andy Norris set the tone, and with James Flecknell contributing with 4 wickets and a brilliant close catch, the hoodoo was broken.

Ending the season with 5 batsman in the top 20 in the league, and 3 bowlers within the top 20 also further emphasises the talent the team possesses. 'Again, togetherness is the key says Josh, but some of the individual performances this year have been fantastic in seeing us home. All I've done is placed great importance on team spirit, each Saturday, but this season is down to all of the players that have played for us. We've used 22 players this year, and every single one deserves the accolade of winning the league. The campaign can now serve as a springboard for future success, there's so much potential here for us to be hugely successful for years with a balanced mix of experience and youth.

Eaton Bray Cricket Club 100 Club Winners September 2016

£25 Richard Archer
£10 J Pearson

Eaton Bray Cricket Club is kindly
sponsored by Meadow Marquees,
Houghton Insurance & Giblin Property.



Eaton Bray Lawn Tennis Club

With Andy Cross continuing his lengthy sabbatical from the composition of colourful clauses for this magazine we can all remain secure in the knowledge that his efforts are being channelled into keeping travellers safe as they visit Luton Airport and head out to holiday destinations near & far. Closer to home in Eaton Bray life goes on. The departure of our Super Vicar Coralie McCluskey had made August something of a sad month but everyone, church goes or not, will wish her the very best for the future.

Sad also – well not really – the final match for the 2013 & 2014 Men's Doubles Champions Roy Cook & Peter Hale. This occurred in round 2 of this year's competition in a two & a half hour marathon against Benjamin Johnson & Stephen Macintosh. With an aggregate age of 140 years Roy & I thought it the right time to leave the tournament tennis to those with younger legs & keener eyesight. We can both also reflect being a "one hit wonder" having each won the Men's Singles title back in the last century. Also whoever will forget the Mike Venn / Peter Hale doubles victory of 1989 when our combined ages totalled a mere 92 ?

Like in many other clubs, members leave the arranging of their tournament matches to the very last moment. How difficult is it to get 4 men or lady players together on a given date to spend a couple of hours contesting 2 or 3 sets you may ask ? The answer – very difficult.

At time of writing – a week ahead of our twenty-eighth Finals Day – one of the men's doubles semi- finals has still to be played with the 2015 champions Darren Kerins & Max Freebairn hoping to reach the final should they defeat Nick Browne & tournament organiser David Hillman, whilst in the other half of the draw, in round 2 Ross Bagni & Glenn Wigley lost to 4 times champions Peter Messetter & Simon Mitchener who then took on Benjamin & Stephen for the right to reach the final. Pete

& Simon's successes came in 02, 06, 09, & 11; unfortunately a 5th success was not to be so Ben & Steve will seek to have new names engraved on the cup in 2016

Hopefully a report of a successful & competitive Finals Day can be published in the next edition of the Focus magazine & include all of the junior results and the men's singles final where our 2015 champion, Dan Sunderland, was not able to defend his hard fought title but at least all of the spectators might manage to get home or to the pub at an earlier hour than last year when the final broke all records for longevity except for the Mahut / Isner Wimbledon marathon.

16 times champion Darren Kerins awaits either Stuart Adolph, currently in the USA on business and also taking the opportunity to view the U.S. Open Tennis, or Nick Browne. Probably not the best preparation for former Chairman Stuart to land on Wednesday & play on Thursday but Hey Ho !

In the mixed final Eaton Bray stalwart, croquet master, quiz organiser & all round superb volleyer (I hope I've spelt that correctly) Ross Bagni has the joy of partnering assistant coach Laura Williams against head coach Sara Leavy, who is fresh from her success in the South Bedfordshire mixed doubles final and Glenn Wigley, this partnership having enjoyed previous victory in 2011. Not to be left out of proceedings Jane Wigley will contest the ladies doubles final with Janet Hale. Facing them across the net will be Laura's mum, Debbie and Carole Thorp.

The junior section of the club continues to thrive under the watchful eye of Sara & team. We are about to enter eight junior teams in the Topspin Racquets South Bedfordshire Winter League which will, no doubt, prove to be an organising nightmare for Debbie Williams but hopefully enjoyable for the players. Testament to Sara's efforts is the impact some of the younger players are having in this year's tournament.

On a personal note, this year I will be unable to equal last year's tennis sessions total of 350 but along with several other mature members of Eaton Bray Tennis Club I am still enjoying playing at the Dunstable and Flitwick clubs as well as locally.

Tennis is a wonderful sport for all ages and abilities and in Sara we have a Super Coach, so although Super Vicar Coralie may have left us

we still have Sara to teach if not preach the joys of our sport.

✍Peter Hale

p.s. A little bird has advised me that there is a possibility of the return of Andy Cross at the turn of the year to once again regale readers with tales only loosely associated with Eaton Bray Tennis Club.

Edlesbray Leisure Fellowship (ELF)

Hello everyone,

The past three months have passed by very quickly. Spring and summer flowers have started to fade away but we hope that you have enjoyed their display.

Three walks have taken place in fine weather in June, July and August. The group would like to see more people -(especially ladies), join them, as the one lady member of the group really would enjoy some female company. The group meet at 9.30a.m. at Eaton Bray Church on the 4th Monday in the Month. The walks are taken at a leisurely pace on easy terrain and usually the distance covered is between 3 1/2 and 5miles.

Our Coffee Tavern meeting on August 18th went well with discussions regarding the current programme and also ideas for 2017. Some suggestions for outings include Bekonscot Model Village; Shaw's Corner; London Museums; Thriplow and Wisley.

Please join our friendly group at the Coffee Tavern, you will be made very welcome. Refreshments are always included. If anyone

would like to join the group in any of the activities, transport is always available if required. Details are usually displayed in the North Porch of Eaton Bray Church.

Our September lunch out was at The Ship Inn, Leighton Buzzard and we will return there for our Christmas Lunch on December 15th.

Our two recent outings were to Hughenden Manor and The De Havilland Aircraft Museum at St Albans followed by the Rose Gardens. Thanks go to Brian F. and Graham for arranging these trips. The group usually meet for morning coffee and lunch on the trips out.

Our next outings are to Milton Keynes Museum on October 20th and possibly one to Gaydon Motor Museum.

OCTOBER DATES

Thurs 20th October.

Visit to Milton Keynes Museum. Meet at Eaton Bray car park at 10:30am

Mon 24th October

Walk from Eaton Bray Church at 9:30am

Your Local Bowls Club are Champions

Having been runners up in the League and knocked out Chalfont St Peters and Burnham on the way to the final, Cheddington Bowls Club's men had a convincing win over Amersham, 85 - 62, in the Buckinghamshire Plate Final.

Captain Dave Finch received the trophy and the championship flag from the BBA president Chris Cole, after the two teams and their supporters had enjoyed a few drinks and a celebration lunch.

This was the first time Cheddington Bowls Club had reached the final, so the win is something special. The team was drawn from bowlers from Linslade, Leighton Buzzard, Tring, Dunstable as well as from the villages around Cheddington.

If you want to **Give Bowls A Go**, contact Tony on 01525 220644 - the club is not just a summer season club, for the club has an all year round calendar.

No mouth, all action

Giant moths with no mouths breed for first time at ZSL Whipsnade Zoo

Giant moths with no mouth parts and a foot-long wingspan have successfully bred for the first time at ZSL Whipsnade Zoo's new Butterfly House.

Keepers at ZSL Whipsnade Zoo's colourful Butterfly House wanted to see if the Atlas moths (*Attacus atlas*), one of the world's largest moth species, could breed without any help from keepers, so they gave the goliaths a new home in the form of a large magnolia tree within their tropical biome, and replicated tropical weather conditions, in the hope it would encourage the species to breed.

Within weeks, they were delighted to discover eggs had been laid, and over the next two months, they saw the creatures go through their entire life cycles, from eggs, to caterpillars, to pupa, before eventually developing into the striking looking adult moths.

Team Leader Alex Cliffe said: "The really fascinating thing about Atlas moths is the fact that they don't have mouths, so once they have become moths, they can't eat anything and spend all of their energy stores on breeding.

"As caterpillars, they munch voraciously on leaves for up to six weeks, and ours nearly destroyed the tree during that time!

"But as moths with no mouths, they live off of their reserves for about five days, just enough time for them to breed, and then die. The moth stage of their life cycle is actually them reaching old age."

With a wingspan of 25-30cm, and the largest wing area of all moths, covering about 400cm², these massive moths are among the biggest in the world, despite their remarkably short life span.

Alex Cliffe continued: "As they can only survive for such a short time as moths, the females produce pheromones that can quickly attract a mate with sensitive antennae from several kilometres away.

"One of the things we did to encourage them to breed was to simulate the rainy season, which is their breeding season in their native South-East Asian tropical forest. We kept a strict control on the temperature in the biome, and mimicked rainfall by carefully spraying water over their habitat every day.

"Thankfully, the tree has now recovered from all the very hungry caterpillars and the new moths have already laid more eggs, so we're looking forward to seeing a whole new life cycle now."

Visitors to ZSL Whipsnade Zoo can see the huge Atlas moths for themselves.. For tickets, see www.zsl.org



London Luton Airport

With an increase in aircraft in the area and in particular when the wind is from the East, we are getting some aircraft flying directly over the village to join the flight path into the airport. If you are disturbed by the traffic flying over the village, there is a complaints hotline number: 01582395382. This is an airport number where you can register your concerns. It is important to do this if we are to reduce these disturbances over our village.

If you need to complain about Heathrow flight noise the number is 0800 344 844. Email: noise_complaints@heathrow.com



The Hoof is in the Pudding

Rhino celebrates first birthday by devouring 'cake' at ZSL Whipsnade Zoo



Channelling their inner Mary Berry, rhino keepers at ZSL Whipsnade Zoo swapped their brooms for baking tins this week, as they prepared a very special birthday cake for rhino calf Bali's first birthday.

Juvenile male, Bali, a greater one-horned rhino who weighs in at an impressive one-hundred stone, wasted no time at all in demolishing his birthday surprise - with mum Behan making sure she got in on the action.

To mark the occasion, Bali's dedicated keepers spent hours creating a bespoke cake, made from a recipe

featuring the rhino's favourite food including apples, carrots, parsnips, bananas, grapes and carrots. While Bali, and his one-and-a-half tonne mother, were at first relaxing in their wallowing pool, once they spotted the cake they soon came charging over to make light work of the masterpiece. Senior keeper Chrisy Sellwood-Brown, who helped make the cake, said: "Bali's first birthday is a cause for celebration, as his birth marked a huge success for the European conservation breeding programme for greater one-horned rhinos, which are classified as vulnerable in the wild due to illegal poaching and habitat loss.

"It might look like just a bit of fun, but the cake was great enrichment for the mum and son duo – they're inquisitive animals who love to investigate new things and this was a very exciting treat to discover.

"While our cake might not win us star baker on the Great British Bake Off, I'm sure Mary Berry would give us rhino keepers an A+ for effort!"

On September 6 last year, Bali became the 14th greater one-horned rhino to be born at ZSL Whipsnade Zoo, which was one of the first ever Zoos in the world to breed the species in 1957.

International conservation and science charity the Zoological Society of London (ZSL) works in Nepal to monitor and protect greater one-horned rhinos through an anti-poaching task-force and working alongside local communities. ZSL's work in Chitwan National Park enabled the number of rhinos to rise from 100 in the late 1960s to 544 in 2000.

Brass Band Instrument Players

Wanted



The Salvation Army in Eaton Bray is to hold a Community Carol Concert in Eaton Bray Village Hall on Sunday 27 November. It is hoped that a

Community Brass Band

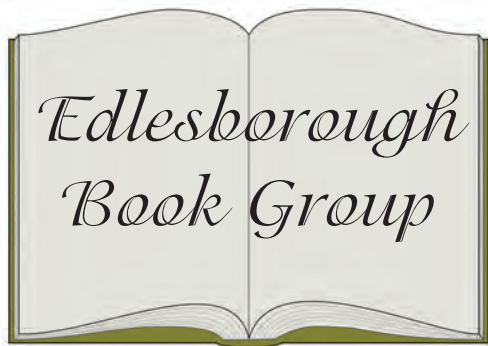
can be formed to take part in the concert.

The initial performance will be quite simple and not overly demanding but our hope is that the band will develop and become a regular feature in the community. No religious connections are required. Everyone welcome whatever age or ability.

If you are interested please contact :

Brian Knightley on 01582 514729;
brianknightley@hotmail.co.uk or

Hilary Chadwick (Envoy) on 07932 057490; 01525 222087
hilary.chadwick@salvationarmy.org.uk



Final Demand by Deborah Moggach

Deborah Moggach is a very popular and prolific writer, her novels are mostly contemporary, dealing with relationship issues; the exception being “Tulip Fever” which has recently been made into a film, alongside another of her books, “These Foolish Things”, which was released with the title “The Best Exotic Marigold Hotel”.

At first glance “Final Demand” seems a lightweight, easy to read book, but it soon darkens with an intricately woven plot, which focuses on human frailties and inability to face difficult decisions.

The story's protagonist is Natalie, beautiful and very bright, who is stuck in a dead end job in the Accounts department of Nu-Line Telecommunications. She is bored and vaguely ambitious but is not sure how she can change her life. An idle conversation with her boyfriend, sparks an idea, a scheme to defraud the company and to make easy money. It seems simple and foolproof and Natalie is convinced that no one will get hurt. The process depends on a change of initial for Natalie, this she sets out to achieve. At first she has no luck, but then due to an unpaid gas bill she meets Colin, come to cut off her supply, and he is the answer to her prayers. Not only does she persuade him to leave her connected, but discovering he bears the right initial, she whisks him smartly off to the altar. Poor innocent Colin, a reptile collecting loner, cannot believe his luck and suspects nothing as Natalie proceeds to change their surroundings and life style. Unfortunately, every crime has cause and effect and Deborah Moggach cleverly resolves every sub plot to show the consequences of Natalie's actions as she herself

is totally unaware.

This is a novel about greed and selfishness and our acquisitive society and the amorality it creates. The book is not very long, it is easy to read and the moral is clear, so, not a lot for book group discussion, but an enjoyable holiday read.

Death of a River Guide by Richard Flanagan

This is the first novel by Richard Flanagan and was published in 1994. He is an Australian, born in Tasmania and educated in England. He has gone on to write more books, winning the Man Booker prize for “Narrow Road to the Deep North” in 2014.

This book is very ambitious, a wide ranging story which features long descriptive passages and covers three generations of a very dysfunctional family. The narrator is Aljaz Cosini a river guide who, whilst leading a group of tourists on rafts along the Franklin River, becomes trapped between rocks after an attempted rescue, and is slowly drowning. As he accepts his predicament, he starts to think of his past and to analyse it as he waits for death. He has a colourful background; a mixture of Aboriginal, Slovenian and English ancestors have formed and influenced him. As he remembers his origins and those of his forbears, a vivid picture is painted of Tasmania and its history. Alongside this, Aljaz remembers the trip itself, the party of tourists and battles with the elements, as he and his assistant the Cockroach, cope with their inadequate supplies and the mighty river itself.

This is not an easy book, it takes a while to familiarise oneself with the rather verbose style. Having done that, one is rewarded by beautiful flowing prose and wonderful descriptive passages that really take one on a trip along the Franklin River.

Our group was divided: some were enthusiastic, others not as keen, but we all agreed that the writing was superb. However, the characters were not ones with whom we could empathise and we felt that they were rather one dimensional. There were not many points that arose from the story, so although we agreed it was a very good book, there was not much for a book group discussion.

Valencia Paella

I'm going a little further afield with this recipe. Juan Valverde lives in Olney but is originally from Valencia, home of traditional paella. His business, Paellas D'Olney delivers paellas to your door and he brought some true Spanish sunshine into the Weekend Kitchen studios. He also put us straight on a couple of key things. Firstly, paella is not difficult to make. In fact, it couldn't be simpler and is pretty well foolproof if you follow the method below.

Secondly, paella is not bright yellow, at least not the way he was taught to make it. The ingredients include chopped tomatoes, with the end result being a marvellously "rusty", orange and yellow hue to the finished dish.

And there was a final surprise. With paella originally being a peasant's meal, he added butter beans to bulk it up a little.

Whether you make this chicken version, opt for a mix of fish, chicken and shellfish or just go for a totally vegetable mix, this versatile paella can form a regular part of your family food repertoire.

You'll need either a paella pan or a large, flat-bottomed frying pan.

Serves 4

Ingredients

Olive oil

400g chicken portions (leg and thigh) on the bone

1 small white onion, chopped

100g runner beans, sliced

100g butter beans

200g chopped ripe tomatoes

Pinch of sweet paprika

1 cube of chicken stock to make 1.2 litres of stock

400g paella rice

A pinch of salt

A pinch of saffron

Method

Pour a good glug of oil into the pan on a medium to high heat and fry off the chicken



until well browned. Add the onions and cook for a couple of minutes to soften, then chuck in the broad beans.

Throw in the tomatoes and cook for ten minutes, then add the paprika, followed by the butter beans and stock. Bring the stock back to the boil.

Add the rice evenly across the whole pan, sprinkle in the saffron and a pinch of salt.

Cook on a high heat for ten minutes then bring the heat down and cook for a further ten minutes on a lower heat.

Leave the paella to rest for a good 5 or 10 minutes before serving at the table.

Hear wonderful recipes on Nick Coffey's Weekend Kitchen every Sunday morning on BBC Three Counties radio at 11am. You can also join Nick every weekday afternoon at midday for brilliant local guests with great stories to tell and all the music you want for your early afternoon.



95.5 FM | 103.8 FM | 104.5 FM | DAB | bbc.co.uk/threecounties

Eaton Bray W.I.

A smaller group of members of the Eaton Bray WI attended the July meeting. Spirits were still high and everyone welcomed our speaker to the meeting who gave an illustrated talk on Emmaus (Hope) which is a charity for the homeless.

Helen invited members to an Afternoon Tea on 18th August at 2 pm to further celebrate the Queen's 90th birthday. The theme was Red, White and Blue. Some of the funds raised will go to the Chairman's Challenge for Denman College. The visit to Jordon's Mill earlier in the month had been a great success. There followed an extremely interesting and informative talk about Emmaus (Hope). They provide security and a stable home to those in need. Emmaus was started by Abbe Piere in 1949 in Paris after the war. In 1990 the first community commenced in the United Kingdom. Today there are 28 communities throughout the UK. There are 32 Companions living in St Albans. New skills are learned and encouragement given to build self esteem in a home environment. Support managers provide the help and stability for those in need. There is an opportunity to become part of the community and make a contribution to it.

The meeting had some social time with tea and cakes.

Our September meeting, held in Eaton Bray Methodist Hall, was well attended. During the month of August members had enjoyed a lovely Afternoon Tea at Helen's House. Scones, tea and cakes were served in lovely sunshine. A good sum had been raised which would be shared between the Chairman's Challenge for Denman and towards the EBWI 90th Birthday Party on Thursday 17th November.

The minutes of the previous meeting and notices were read. The speaker for the meeting

was Paul Heley who gave a very informative talk on Chasing Polar Bears. This was based on his trip to Spitzbergen, which is 500 miles from the North Pole. During the trip, besides seeing the polar bears, he was inspected by seals, ignored by strange walruses and saw the Svalbard reindeers. Paul explained how dangerous polar bears can be. A scout would be sent out at each stop to check if they were in the area.

Members were reminded of the group autumn meeting on Friday 23 September at Baptist Hall, Caddington at 7.30pm. The speaker was William Ashley Norman who is a wire sculptor. A Craft Fair will be held at Flitwick Village Hall on Sunday 30th October.

The next meeting of Eaton Bray WI will be on Monday 3rd October when Wendy Austin will be talking on the subject of Ashridge House and the Brownlows.

Meetings are always the first Monday of the month (except Bank Holiday when it is the second Monday). The Meetings commence at 7.30 pm and are held in Eaton Bray Methodist Hall. The contact for Eaton Bray WI is: Margaret Jones, on 01525 220991.

A warm and friendly welcome awaits new members. At each meeting there is an interesting speaker or demonstration, followed by social time and refreshments.



Dunstable & District Local History Society

**Tuesday 11 October, 7.45pm
Roald Dahl's War**

Before he became so well known for his children's books, Roald Dahl wrote vivid stories based on his own war time experiences. Graham Laurie describes what happened.

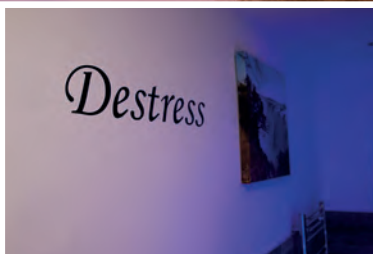
**Methodist Church Hall, Dunstable
Visitors always welcome £2**

Floatation therapy

relaxation is the art of letting go



1 hour float
is equivalent to
4 hours sleep



CALL **01442 870686** TO BOOK A SESSION
reception@ejphysio.co.uk www.ejphysio.co.uk

3 The Old School House, George St, Hemel Hempstead, Herts, HP2 5HJ



STOCKISTS FOR



GUTTER BRUSH

**- All aspects of Pressure Washing -
Roof Cleaning / Coating specialists**

- Safe cleaning system using rope access
- Roofs cleaned using 'controlled' pressure washing
- All water recycled

For before and after photos please visit:
<http://www.facebook.com/greatoutdoorsandin>



0800 298 5883

www.greatoutdoorsandin.co.uk



FREE QUOTATIONS



BUILDING SERVICES

Over 25 years experience

Friendly and Reliable
Service

Fully insured

All aspects of building
work undertaken:

- Kitchens & Bathrooms
- Refurbishments
- Garage Conversions & Extensions
- Plastering, Painting & Decorating
- Wall and Floor Tiling
- Patios and Fencing
- Fascias & Soffits
- General Maintenance

Mobile: 07931 308306 Tel: 01582 475428

Email: ajrbuildingservices@hotmail.com

**A McClelland
Pest Control**



FOR FAST RESPONSE CALL:

Mobile 0777 494 8415

Office 01582 872158

*specialists in: wasps - bees - ants
hornets - fleas - cockroaches - bed
bugs - pigeons - magpies - rabbits
rats - mice - moles - squirrels
foxes - mink - feral cats*



UNMARKED VEHICLES

For further information please call or email
amcclellandpestcontrol33@gmail.com



family photography



hobby photography



product photography




locations & premises

www.redbrickphotography.uk

Eaton Bray's New Photographer!

07852 200 139

THE PERFECT PLACE FOR ANY OCCASION....

 *ACCOMMODATION - OFFERING A VARIETY OF
ROOMS/SUITES*

 *BREAKFAST, LUNCH OR DINNER
IN OUR HENRY'S RESTAURANT*

 *SUNDAY LUNCH*

 *MEETINGS*

 *WEDDING PACKAGES*

 *PRIVATE FUNCTIONS*

 *FUNERAL RECEPTIONS*

 *CHRISTMAS & NEW YEAR PARTIES*



FOR MORE INFORMATION ON WHAT WE OFFER,
PLEASE CALL US ON

01582 662201

OR VISIT OUR WEBSITE.

Leighton Plumbing & Heating

Oil fired boilers
service, repairs
& installations



All other aspects of plumbing
& heating undertaken

Oftec registered & insured

01525 385250
07774 567472

11 Woodman Close
Leighton Buzzard
Beds
LU7 3NU

leighton-plumbing@ntlworld.com



Helping Hands
The Home Care Specialists

Est. 1989

Do you need a Helping Hand?

Our **local** care team has been providing award winning quality homecare since 1989.

We offer a homecare service **from 30 minutes per week to full-time Live-in Care**, which enables you or your loved one to remain at home with compassion and dignity.

To find out how we can help,
call: **01296 752 632** or
visit: www.helpinghands.co.uk

Stoten Gillam
chartered accountants
chartered tax advisers

99 High Street South
Dunstable
LU6 3SF
Tel: (01582) 608601
www.stotengillam.co.uk

ICAEW CHARTERED ACCOUNTANTS

"Practical Solutions for Growing Businesses"

MOBILE MASSAGE THERAPY

20% OFF
FIRST 2 MESSAGES
Vouchers are available

Rejuvenate and revitalise with a massage. Rest your mind, relax your body, relieve tensions, restore calm and balance with some well deserved respite from your busy life and daily stresses.

Sarah Tees, ITEC, CThA
07792 542760
01525 220323
esprittherapy.co.uk

plumbing & gas engineers

Page

maintenance ltd

www.plumbingandgas.org.uk

Gas boiler, fire & cooker, servicing, installation & repairs cylinders etc.

Heating system problems *inc.* power-flushing

Dripping taps & internal plumbing issues

Also solar thermal repairs & servicing
Inc. LPG and park homes

01582 674829

mark@plumbingandgas.org.uk



FREE INITIAL CONSULTATION

OUR SERVICES INCLUDE:

Accounts • Bookkeeping Services • Cloud Based Bookkeeping • Tax Returns
Management Accounting and Reporting • CIS • Payroll Bureau • VAT Returns
Corporation Tax • Company Secretarial • Specialist Business and Tax Advice


Specialising in New Business Start-Ups

- Fixed Fee Quotes
- Unlimited Email and Telephone Support
- Back Office Solution
(dealing with your back office accounts function enabling you to focus on the rest of your business)

Please contact us for more information...

Gable End, Sparrow Hall Business Park
Leighton Road, Edlesborough. LU6 2ES
Tel: 01525 229 539 • Fax: 01525 220 180
enquiries@rileyaccounts.co.uk
www.rileyaccounts.co.uk

@RileyAccounts • Also on



Call us on...
01525 229 539

"YOUR LOCAL ACCOUNTANT"

We are a nurse-led home care provider committed to delivering the very highest standards of care.

Support from our dedicated team gives you or your loved one the peace of mind and confidence to be able to continue living at home.

Family-owned and managed, we are independent and do not belong to a national chain or franchise. We are registered with the CQC, number 1-1499072841.



your own
home care
putting the nursing back into care

To talk to us about your requirements please call Helen Yates RGN on 07920887414 or 01442 843064 or email helen.yates@yourownhomecare.co.uk



www.yourownhomecare.co.uk



***Get the Beautiful Smile You Deserve!
Book your FREE Smile Assessment now.***

Edlesborough Dental Practice

Telephone: 01525 223175

11 Cow lane, Edlesborough, LU6 2HT

www.flossandsmile.co.uk

**General Family Dentistry * Crowns * Bridges * Dentures
Smile Makeovers * Tooth Whitening * Tooth straightening Implants
* Hygienist * Sedation * 0% Finance available**



Some comments from our December 2015 Ofsted report:

Children learn good manners and know how to treat each other with respect.

Staff are consistently kind and caring and this supports children to develop confidence and resilience.

Teaching is consistently good and children's safety is given the highest priority.

We are a committee run playgroup operating five mornings a week 9:15 – 12:15 for children aged 2 to school age.

If you would like to find out if your child would be happy here, please phone our Playgroup Leader, Ann Tobin on 07816 358 342.

www.dagnallunderfives.co.uk

DJH and Co Accountants Limited

Specialising in helping small
businesses and self-employed
people.

Financial Accounting, Bookkeeping,
Payroll and Tax Assistance services.
Competitive rates. Fully Licensed and insured.

01525 792288/07875560090
djhandcoaccountants@yahoo.com
www.djhandcoaccountants.co.uk

CHIROPODY HOME VISITING PRACTICE

Julia Reading, BSc(Hons)

17 years experience

- * Corns * Hard skin * Verrucae
- * Thickened/Ingrowing nails
- * Nail cutting * Diabetic feet

Please telephone: 0774 647 2781

for more information or to make
an appointment



The COLLEGE
of PODIATRY



hpcp
registered
www.hpcp-uk.org

Coffee Tavern



Large Hall £6.00 per hour

Committee Room £3.50 per hour

**Large Hall &
Committee Room £8.00 per hour**

Bookings 01525 220891

Stairlift and access ramp available

Oven Wizards™

We clean your oven...so you don't have to!

Call today to have your oven, hob, extractor or
Aga professionally cleaned

Contact Paul Joyce: Tel 01525 792761
Mob 07808 580718
pauljoyce@ovenwizards.com

Wag & Stroll

*Dog Walking &
pet caring service*

*One off or regular
walks in familiar
surroundings*

*Cat sitting also available
Please call Sue on*

07758 647488

email: wagandstroll@gmail.com



**Electrical
Services**
www.rselectricalservices.com



**FULLY QUALIFIED
ELECTRICAL ENGINEER**
CPS Registered through NICEIC Scheme

Competitive prices and quality service

Available for all your domestic and
commercial electrical requirements

No job too small

Call Russell Sears:

**07578 008567
01525 220008**

17 Good Intent, Edlesborough

Edlesborough W.I.

Our two summer meetings were held in the Memorial Hall. The first took place on 12th July, when our speaker, Yvonne Bell, a Christian artist and vestment designer, spoke on the subject, 'Silks for Sunday'. Yvonne originally attended college, where she studied graphic design but then went on to teach herself the art of silk printing. She now produces Christian art and church vestments which include: stoles, chasubles; both lined and unlined, altar falls and altar frontals, copes, mitres, lecterns, pulpit falls, waistcoats and banners (for both the Church and schools) and last but by no means least, conference back cloths, all of which have been produced by painting the designs onto silk.

All the items Yvonne produces are made to order and are produced in beautiful, vivid colours. Two notable 'customers' are: the Archbishop of York and the Archbishop of Sentamu. Yvonne also produces canvas prints, posters and greeting cards. All of her work is done by hand and is both beautiful and intricate. The audience was able to appreciate the work even more when examples were handed out and therefore everyone saw just how intricate the work was. The materials used have travelled a fair distance. The silk is from China and the dyes are from France. A most enjoyable and interesting talk, which was greatly appreciated by all.

Our second meeting took place on 9th August, when the guest speaker, Bob Harding – Jones, spoke on the subject, 'Twenty years as a Paramedic'. Bob was an interesting and amusing speaker, who was proud to have been the oldest paramedic in the Eastern region, before retiring this time last year. Not only did he tell the ladies about his work but he also read out a poem entitled, 'Nose' which was in the form of a get well card which he had compiled. He reported that he had seen many

changes to the ambulance service during his professional employment: starting with the Herts Ambulance Service then progressing on to the Beds and Herts Ambulance Service and ending with the East of England Service, which includes six counties and covers an area up to approximately 140 miles.

Bob took us through the different stages of examining an unconscious patient and whether the case was genuine or not. He did tell the ladies that it was not unknown for people to feign unconsciousness as a result of 'lovers' tiffs'. He told tales of receiving calls for assistance via Spain and of elderly couples arguing with their zimmer frames. However, not all of his tales were happy or funny. Sadly to say, there is an increase in malicious calls, which are extremely costly and endanger greatly the lives of others. It was a very informative talk from Bob.

✍️ Jackie Flint



**Stay & Play
Toddler
Group**

**Musical
Monkeys**

**Eaton Bray Village Hall
10-11.30am on Fridays**

**£4.50 for one adult and child
£1 for extra children/adults
0-6 months free**

October at the Grove

Grove Film

Star of The Office, and everyone's favourite extraordinarily ordinary man; David Brent is travelling the country living his dream of being a rock star. David Brent: Life on the Road (15), a mockumentary comedy film is at the Grove Theatre this October. Please see the Grove Theatre website for full film listings at www.grovetheatre.co.uk or call our Box Office team on 01582 60 20 80.

One Night of Rock

Saturday 1 October 7.30pm

An all-new audio visual experience, where you can air-punch, arm-wave, foot-stomp, head-bang and chorus-sing to endless rock anthems! Are you ready to rock?

Norma – Encore Screening

Sunday 2 October 2pm

Encore Screening from the Royal Opera House; sung in Italian with English subtitles. This new production of Bellini's classic brings a modern edge to a timeless tale of love, rivalry and betrayal, set against a backdrop of war driven by the extremes of a fanatically religious society.

Mum's the Word 2

Saturday 8 October 7.30pm

Michelle Heaton (Liberty X), Gemma Bissix (Eastenders), Rebecca Wheatley (Casualty), Polly Highton (Emmerdale) and Sarah Lawn (London's Burning) star in an updated version of the hit show that laughs at the comedic horrors of bringing up children.

Swan Lake

Sunday 9 October 7.30pm

The highly-acclaimed Russian State Ballet and Opera House returns with another popular ballet. Tchaikovsky's unforgettable score accompanies the tale of a princess, who is turned into a swan by an evil curse. But will a prince's love prove strong enough to break the curse and save her despite all odds?

Al Murray

Monday 10 October 7.30pm

Publican. Politician. Other things beginning with P. Philosopher, yeah, that. The nation's bar-based-braveheart, Al Murray – The Pub Landlord embarks on a common sense crusade to re-Great Britain, with Let's Go Backwards Together.

Tony Denton Promotions Presents Ray Quinn

Tuesday 11 October 7.30pm

Ray Quinn, multi-talented singer, dancer and actor is working on a new commercial sound, returning him to music and creating an album of original songs for his eagerly awaited second album. Join him for the No Man's Land tour this October.

The Unique Komedy Ukulele Orchestra

Friday 14 October 7.30pm

Combining music from Mozart to Monty Python, Bach to the Beatles; The Unique Komedy Ukulele Orchestra bring a unique vocal harmony blend with their own brand of typically British humour, inventive arrangements and the sound of the underrated miniature instrument of choice, the ukulele.

The Giant's Loo Roll

Saturday 15 October 2.30pm

Look out for the biggest loo roll ever on stage in this GIANT of a children's musical. The villagers in the town below the Giant's house had better watch out, because that loo roll has gone bouncing down the hill towards them! What will they do with it?

Rob Beckett

Sunday 16 October 8pm

Rob Beckett's back with a brand new show of funnies and he's taking on the big issues like Kit Kats and flatbread, in *The Mouth of the South*.

Così Fan Tutte – Live Screening

Monday 17 October 6.30pm

Live broadcast from the Royal Opera House; sung in Italian with English subtitles. How much do you love your partner? How much do you trust them? And can they trust you? Mozart's classic opera puts two pairs of lovers to the test.

An Evening with the Rubettes

Tuesday 18 October 7.30pm

An evening with original Rubettes Alan Williams, John Richardson and Mick Clarke as they play the hits and tell it 'like it was', accompanied by Steve Innes Etherington.

Moon River & Me

Wednesday 19 October 7.30pm

The only official Andy Williams tribute, starring Jimmy Osmond. Jimmy sings the songs that made Andy Williams so beloved by millions, including the song to become his theme tune, Moon River.

The Carpenters Story

Friday 21 October 7.30pm

Celebrating the music of one of the most successful pop duos in music history, Richard and Karen Carpenter. *The Carpenters Story* features Claire Furley's stunning vocal harmonies, state of the art video projection and lavish musical arrangements.

Whitney

Saturday 22 October 7.30pm

A stunning celebration of the music and life of one of the greatest singers of our time. West End star Rebecca Freckleton delivers a powerhouse and breathtaking performance as Whitney.

King Lear – Encore Screening

Sunday 23 October 2pm

Encore Screening from the Royal Shakespeare Company. *King Lear* has ruled for many years, but when he decides to divide his kingdom between his children, he misjudges their loyalty and must bring himself back from life out in the wilderness.

Sid's Show

Tuesday 25 October 2.30pm

Join Sid from CBeebies live on stage, in a fantastic fun-filled adventure that'll knock your socks off! Sid wants you to share his heroic quest to find out where in the world his favourite socks and shoes have got to!

Jim Davidson

Thursday 27 & Friday 28 October 8pm

Britain's most controversial comedian celebrates an explosive forty years in show business with a truly revealing and hilarious look at his life, from triumphs to tragedies, in *40 Years On*.

Stand By Me

Saturday 29 October 7.30pm

A celebration of Ben E. King and The Drifters. The icons, challenges, controversy and conflicts, told through anecdotes of former members on screen, as well as live performance spanning six decades of phenomenal musical history.



Dagnall Weather Station (AONB)

Weather Conditions for July & August 2016



Elevation: 450 ft - Latitude: 51° 50' 13" North - Longitude: 0° 33' 34" West
July 2016

July: was a very dry month overall although we had some rain just 27.40 mm which was 50% of the 9 year average most of that fell on the 12th. The temperature was below average except for 3 days in the middle of the month when on 19th we recorded 32.4°C the highest temperature so far this year. The box below shows the summary page that I see on the computer. This is updated live every 2 seconds.

	High	Date/Time	Low	Date/Time
Temperature	32.4°C	19 July 15.30	7.1°C	6 July 04.30
Mean Temp	17.5°C	Dominant Wind:	W	
Humidity:	96%	18 July 07.00	32%	18 July 16.30
Barometer:	1025.6 hPa	15 July 00.30	1003.5 hPa	11 July 05.00
Wind Speed	32mph SW	10 July 16.30	Months avg.	4.8 mph
Wettest Day	12 July		20.80mm	Ins 0.818
Monthly Rain:	Total	July	27.40 mm	Ins 1.078

Summary page 22.16 hours on the 19th July the hottest day of the month

	Units	Current	Today's Highs		Today's Lows		
Inside Temp	[°C]	29.8	31.0	19:05	27.5	5:55	
Outside Temp	[°C]	22.9	32.4	15:13	15.1	4:31	
Inside Heat Index	[°C]	30.6					
Heat Index	[°C]	23.6	34.4	15:10			
THW Index	[°C]	22.2					
Wind Chill	[°C]	21.5			15.0	3:19	
Inside Hum	[%]	47	50	8:38	44	19:06	
Outside Hum	[%]	71	95	6:03	42	16:10	
Inside Dew Point	[°C]	17.3					
Dew Point	[°C]	17.4	20.0	14:25	13.9	0:33	
Wind Speed	[mph]	12.0	21.0	17:24			
10 Min Avg Speed	[mph]	11.0					
Wind Direction		151	SSE				
Barometer	[hPa]	1011.9	1019.6	0:01	1011.9	22:16	
Bar Trend		Falling Slowly					
Rain Rate	[mm/hr]	0.0	0.0	---			
		1 min	2 min	5 min	10 min		
Avg Wind Speed	[mph]	11.3	11.3	10.6	10.5		
High Wind Speed	[mph]	14.0	15.0	16.0	16.0		
		Daily	Storm	Month	Year	1 Hour	24 Hours
Rain	[mm]	0.0	0.0	23.2	441.6	0.0	0.0
Sunrise: 5:08		Sunset: 21:10		Moon Phase: Full Moon			
Console Message:		Low Console Batteries					
Forecast:		Increasing clouds with little temperature change.					

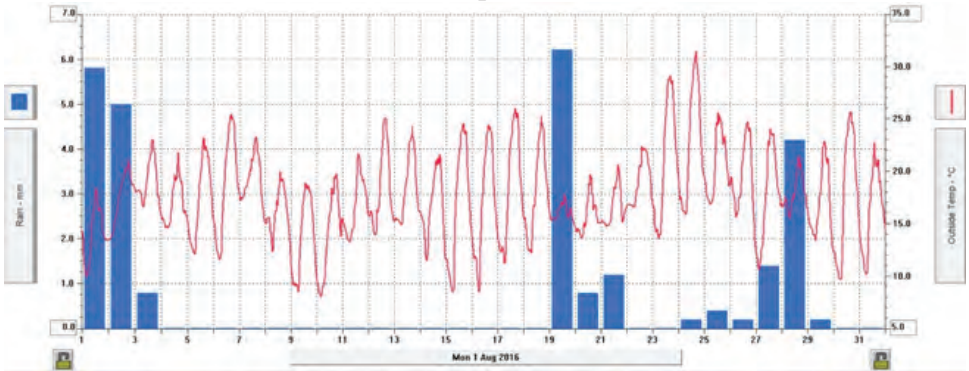
August 2016

August: was unsettled for the first 3 days then the temperatures rose and remained low in the mid-twenties for most of the month. Rain again on 19th & 27th -28th but in total we only had 26.4mm just 33% of the monthly average which is 78.0mm.

August 2016

	High	Date/Time	Low	Date/Time
Temperature	31.7°C	24 August 16.00	8°C	10 August 03.30
Mean Temp	17.7°C	Dominant Wind:	W	
Humidity:	98%	2-16-23 August	39%	17 August 18.00
Barometer:	1026.3 hPa	6 August 12.30	1003.0 hPa	19 August 18.30
Wind Speed	32mph SSE	20 August 15.00	Months avg.	5.1 mph
Wettest Day	19 August		6.2 mm	0.224 ins
Monthly Rain:	Total	August	26.4 mm	1.039 ins
Yearly Rain:	Total	8 Months	472.2 mm	18.590 ins

Plot shows Temperature & Rain



Station News: For weather data 24 hours a day, updated every 15 mins, visit: www.dagnallweather.co.uk and http://bit.ly/weather_dagnall showing this site forecast and much more. If anyone has a question, comment or wishes to contact me please email: david@dagnallweather.co.uk or telephone: 01442 843883. Dagnall weather now has an app for your ipad & iphone! Just go to the apple store, search for Wunderstation and follow the instructions to Dagnall Weather Station. Now updated every minute.



All Saints' Church, Dagnall

Services in October 2016

- | | | | |
|--|----------|---|--|
| Sun. 2nd Oct. | 9.00 am | Eucharist | |
| | 10.30 am | Morning Service | |
| Sun. 9th Oct. | 10.30 am | Morning Service | |
| Sun. 16th Oct. | 10.30 am | Family Communion | |
| Sun. 23rd Oct. | 10.30 am | Family Service | |
| Sun. 30th Oct. | 10.30 am | Morning Service | |
| Sun. 6th Nov. | 10.30 am | United Service for the Festival of All Saints | |
| Sunday School meets each Sunday at 10.30 am except when there is a Family Service. | | | |





After the summer break now temperatures are falling many people across Bedfordshire will begin lighting their open fires to warm their home and enjoy the flicker of a real coal or wood fire.

However lighting an unswept chimney could lead to a serious fire, in the last three years there have been 168 chimney fires in Bedfordshire and generally they are caused by lack of cleaning of the chimney or flue, a blockage in the flue, caused for example by a bird's nest or overloading of the open fire.

Chimney fires usually occur because not all the fuel (coal, wood etc) is burnt during combustion and leaves combustible particles in the chimney that can be ignited by high temperatures or flames from a very hot fireplace. This can cause the chimney to weaken and ignite other parts of the house with devastating consequences.

To prevent this happening:

- Ensure your chimney is swept regularly by a professional chimney sweep.
- Between "sweeps" keep chimneys, flues and appliances clean and well maintained
- Always use a fire guard to protect against flying sparks from hot embers
- Store fuel away from the appliance so sparks do not set it alight
- Ensure the fire is completely out before going to bed or leaving the house
- Ensure good quality and appropriate fuel is used
- Avoid blocking air vents or air bricks or interrupting the air supply

Thomas Warner, Prevention Support Manager, said: "Keeping your chimney clean and free of debris helps prevent any build-up of combustible deposits that could catch fire. During the summer, when chimneys aren't used much, they can also become home to birds' nests, cobwebs or other material that

helps a chimney fire start. Birds' nests and other debris can also block the flue which means smoke and deadly Carbon Monoxide gas, released during burning, can seep back into the house poisoning the occupants.

"We recommend that you have a working Carbon Monoxide Detector in any room with solid fuel appliance. Under new laws which are due to come into effect from October 2015 Landlords are required to fit carbon monoxide alarms in rooms containing solid fuel appliances.

"Home insurance policies often state you should take reasonable care of your chimney and for thatched properties could specify how often your chimney is swept. Ignoring this could mean you are uninsured if your chimney catches fire, so check your policy and have your chimney swept.

"Even chimneys that have been lined still require regular sweeping and having your chimney swept also enables you to get advice from an expert about chimney safety. Why not remind your friends and family to get theirs swept as well."

How often chimneys should be swept depends on the type of fuel used:

- Smokeless fuels – at least once a year
- Bituminous coal – at least twice a year
- Wood – quarterly when in use
- Oil – once a year
- Gas – once a year (Any work on gas appliances requires a Gas Safe registered installer/engineer)

For further information on chimney safety, you can visit the association websites – www.nacs.org.uk / www.instituteofchimneysweeps.com.

Cheshire Fire and Rescue Service have produced a short video giving advice about keeping your open fire and chimney safe, view it here: bit.ly/1XjrrCp

D Scott and Sons Home Services Limited

contact us now on
01525 791563
07921 670437

Plumbing and Heating Specialists

- 🔑 Boiler Repair
- 🔑 Boiler Installations
- 🔑 Powerflushing
- 🔑 Annual Servicing
- 🔑 Landlords Certificate
- 🔑 Magnetic System Filters
- 🔑 Radiator Valves
- 🔑 Oil Central Heating

Other services...

We offer a full range of plumbing services including full bathroom refits, shower replacements, kitchen appliance installations, sinks, taps, traps & drainage.



**24/7
Call Out**



www.dscottandsons.com

Looking to visit colder climates...

For help with creating the best itinerary for you please call or email us

- Whether you wish to ski, hunt for the Northern Lights, see polar bears or visit Santa we can help
- Friendly, honest advice from an independent travel agency
- Extensive experience to arrange every detail
- Using fully bonded tour operators
- No booking fees



Travel Impressions

01442 890265

enquiries@travelimpressions.co.uk
www.travelimpressions.co.uk

Suite 4, George House, 64 High Street, Tring, Herts. HP23 4AF

Salvation Sound



Thankfulness

When we turn on our televisions or listen to our radios we are so often confronted with what is wrong with the world. The news is full of the tragic and terrible and many of the programmes encourage callers to ring in to their 'moanathons'. The TV comedy show hosted by Frank Skinner, 'Room 101', invites celebrities to discuss their pet hates and persuade the host to consign those hates to oblivion in Room 101. Such is our focus on the negative.

As an avid listener to Radio 5 Live I was encouraged by a recent phone in where callers were encouraged to share the things that made a good day. I chuckled to myself as the presenter shared that his day was good because the computer had told him that the password he had chosen was a **strong** password. Other callers shared poignant and moving reasons such as, 'today is a good day because I have just been told my cancer is in remission' and 'today my daughter has announced that she is expecting twins after years of trying for a family.'

At this time of year as we think of Harvest many people focus on all the things they have to be thankful for. Psychologists tell us that developing an attitude of gratitude all year round is one of the simplest ways to improve your satisfaction with life. It doesn't cost anything but it can have tremendous benefits: it opens up more relationships and wins new friends; grateful people experience fewer aches and pains; it reduces the toxic emotions, such as resentment, frustration and regret and increases happiness; we are told that grateful people sleep better and longer, especially if they spend some time at the end of the day jotting down the blessings of the day; and finally gratitude improves self-esteem and mental strength to overcome adversity.

The benefits and need for thankfulness is a recurring theme in the Bible. 1 Thessalonians 5:16-18 says, "Be joyful always; pray continually; give thanks in all circumstances." We are called to give thanks in all circumstances; to make thankfulness a way of life.

On that note, Maureen Richardson has written Salvation Sound for the last 17 years and as she hangs up her pen as a contributor to the Focus magazine I would like to express appreciation and sincere and grateful thanks on behalf of The Salvation Army. Maureen truly is a wordsmith who has inspired us by her reflections and thoughts over these years. Thank you, Maureen.

As we see the Harvest is gathered in all around us may we, as the hymn suggests, raise the song of harvest home.

*Come, ye thankful people, come,
raise the song of harvest home;
all is safely gathered in,
ere the winter storms begin.
God our Maker doth provide
for our wants to be supplied;
come to God's own temple, come,
raise the song of harvest home.*

At Harvest time we are reminded that God has provided so much for us to be thankful for. We all have the ability and opportunity to cultivate gratitude, so take a few moments to focus on all you have rather than complaining about the things you think you deserve. Expressing thankfulness helps us remember that God is in control. Thankfulness, then, is not only appropriate; it is actually healthy and beneficial to us and improves our enjoyment of life.

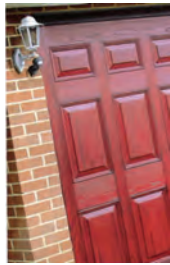


Premier Garage Doors & Gates



Quality Garage Doors

- ✓ Superb choice of designs in metal, wood and fibreglass
- ✓ Any size door made to your requirements
- ✓ Large selection of spares & fast repair service available
- ✓ New or existing doors converted to automatic
- ✓ Professionally fitted by own expert craftsmen
- ✓ Prompt free estimates & advice
- ✓ We cover all areas



(EST 1984)

DIY kits available
Insurance work welcome
Council approved
Remote control gates also available



Unit 7, Sparrow Hall Farm, Leighton Road, Edlesborough LU6 2ES

01525 220212

www.premiergaragedoors.co.uk

JANES

FLOORING DIGITAL APPLIANCES CYCLES SERVICE

JANES FLOORING



No obligation quote
Borrow samples
Uplift & disposal
Help with furniture

JANES DIGITAL



Same day delivery
Install & set-up
Tune-in
Take old away

JANES APPLIANCES



Competitive on price
Same day delivery
Install & set-up
Take old away

JANES CYCLES



Wide range
Built & ready to ride

JANES SERVICE



Repair & service
Appliances & TVs
Cycles
Small electricals

**SAME DAY
DELIVERY**
ON IN STORE STOCK

BISSELL
BISSELL CARPET
CLEANER
FROM £19.99



01525 220208

4-6 High Street

www.janesltd.co.uk

Edlesborough, LU6 2HS