

FOCUS

June 2016

Focus is online at www.thefocusmagazine.co.uk

The local village magazine just for Us!

Eaton Bray, Edlesborough, Northall & Dagnall



The White Horse Eaton Bray

Great food in a lovely pub

Market Square
Eaton Bray
Beds
LU6 2DG

www.eatonbraypub.co.uk



Tel : 01525 220 231

TRY OUR NEW SPRING MENU AVAILABLE NOW

**Receive a 50% discount on a
bottle of house wine when four
people choose a main course
from our new menu!**
(cut out and bring this with you)



*****IMPORTANT*****

NOTICE TO FOCUS READERS AND CONTRIBUTORS

One of our team, **George Crutcher**, will be giving up the role of joint Editor on 15th June 2016. He will continue in his role for the July edition of the magazine, so contributions for those can still be sent to him. Thereafter all contributions should be sent to Sally Siddons. In the meantime the committee will be looking for a new joint Editor and his or her contact details will be published in the magazine in due course.

**NORTHALL & DISTRICT
AGE CONCERN**

(The Wednesday Club)

**Annual General
Meeting**

Thursday, 9th June 2016

At 7p.m.

Coffee Tavern, Eaton Bray

**Members of the public are
invited to attend**

The Focus Magazine Committee

Joint Editor: George Crutcher

7 Summerleys, Edlesborough 221637

Email: george.crutcher@tiscali.co.uk

Joint Editor: Sally Siddons

34 Wallace Drive, Eaton Bray 221733

Email: sallysid@hotmail.com

Dagnall Representative: Sue Cawdell

10 Deans Meadow, Dagnall 01442 842200

Circulation Manager: John Plater

41 Church Lane, Eaton Bray 221095

Treasurer/Leaflet Enquiries: Ken Coates

10 The Nurseries, Eaton Bray 220868

Advertising: Sally Siddons

34 Wallace Drive, Eaton Bray 221733

Design and Layout: Tracey Moren

(Moren Associates Limited) 01525 229695

Printed by: Priory Press

Dunstable 01582 699851

Copy for publication to the Editors by the

10th of the month

Focus accepts no responsibility as to the accuracy or content of any advertising or articles published in 'this' magazine, neither do they reflect the opinion of members of the Committee. © Articles published in Focus may not be reproduced without permission.

**Focus would like to remind
contributors that the deadline
for articles is the 10th of the
preceding month.**

Kindly Note

If the event you wish to advertise falls in the first week of the month, it is advisable to get the details into Focus a month earlier. The magazines are not delivered from the printers until the first of the month, therefore it takes a few days for them all to be circulated throughout the village.

✉ Editors

Focus is online at www.thefocusmagazine.co.uk

Village Diary June 2016



Weekly

- Mon-Fri (term time) Eaton Bray Pre-school, Eaton Bray Lower School, 01525 220468
- Mon-Fri (term time) Dagnall Under 5's, Dagnall Village Hall, 9.15am - 12.15pm, Mrs Ann Tobin 07816 358342
- Mon-Fri (term time) Edlesborough Pre-School, Edlesborough School, 01525 220431
manager@edlesborough.bucks.sch.uk
- Mon-Thu (term time) Totternhoe Pre-school, mornings, Totternhoe Lower School, Michelle Urbanowicz on 01582 668841
- Mondays Pilates, 10.45am, Totternhoe Memorial Hall, Lisa: 07799 893489
- Mondays (term time) 2nd Eaton Bray Brownies, girls 7-10 years, Edlesborough Memorial Hall, 6 - 7.30pm, Contact Sandra Counsell 07979 521900
- Mondays Dagnall Community Choir, All Saints Church 7.45 – 9.45pm
- Mondays (term time) Movement and exercise classes with a dance flavour, Northall Village hall 2-3.30. Contact Jan 01442 864271.
- Mondays Curtain Call Youth Theatre 5-7.30pm, Eaton Bray Village Hall, Gavyn 01525 220525
- Mondays Curtain Call Theatre Group - 7:30-10:30pm Eaton Bray Village Hall, Sheila - sdtwinkletoes@yahoo.co.uk
- Mondays KFFPA ISTD Classical Ballet classes, 3+yrs, 4.15pm, Edlesbrough Memorial Hall, www.kfpa.co.uk
- Tuesdays Line Dancing, 1.30-3p.m., Eaton Bray Village Hall, Lyn Stubbs 220731
- Tuesdays Pilates, 10-11am, Eaton Bray Village Hall, Nicky Roussou 07861 162680
- Tuesdays Totternhoe Baby & Toddler Group, 9.30-11.30am, St. Giles Church Hall, Ruth Allen, 01525 222468 or 07796 265174 or email ruthallen002@gmail.com
- Tuesdays Northall Baby & Toddler Group, 9:30-11:30am, (open in the Summer School Holidays) Northall Village Hall, Stacey Richmond 01525 222999/07957 607592
- Tuesdays Tap & Ballet Classes, JoAnn Latus School of Dance, 4-8pm, Eaton Bray Village Hall, 01582 620576
- Tuesdays Circuit Training - Edlesborough School Hall, 7-8pm - www.simplesfitness.com
- Tuesdays Fitness on the Green Class - Edlesborough Green, 10:30 - 11:15am, children and buggies welcome. See www.simplesfitness.com
- Tuesdays Coffee Morning, Bring & Buy, Table Top Sale, 10-12noon, Salvation Army Hall, Booth Place, Eaton Bray
- Fortnightly
- Wednesdays Pilates, 7.15pm, Northall Village Hall, Lisa: 07799 893489
- Wednesdays Egyptian Dance Class, 7.30-8.45pm at Eaton Bray Village Hall. Contact: Soraya on 07976 964316 for more details
- Wednesdays Northall & District Age Concern Wednesday Club, 10am - 3pm, Northall Village Hall, Contact Anna on 07854 230243
- Wednesdays Dynamic Yoga 6.30-7.30pm £5 Eaton Bray Coffee Tavern, Keira 07936 693696
- Wednesdays (term time) Caterpillars preschool parent and child group 10 to 11:30am, Grace Baptist Church, Moor End, Edlesborough £1 per family unit, Rebecca Dennis 07920 062248
- Wednesdays Pilates 6.45-8.45pm, Dagnall Village Hall, Andrea on 07855 138005 or andrea@naturalpilates.co.uk
- Wednesdays Art of Ju Jitsu martial arts class, Eaton Bray Village Hall, 7 - 7.45pm ages 6-15yrs
- Thursdays Yoga, Northall Village Hall, 11.30am-1pm 01525 377542
- Thursdays Baby & Toddler Group, Salvation Army Hall, Booth Place, Eaton Bray, 9.30-11.30am
- Thursdays Keep Fit, Edlesborough School, 8pm Tel: Anthea Healey 01582 841350
- Thursdays Jazzercise, 9.30-10.30am, Eaton Bray Village Hall, Angela Veryard, 01525 715208
- Thursdays KFFPA Street dance classes 4+yrs 4pm, Edlesborough Memorial Hall, www.kfpa.co.uk
- Thursdays Circuit Training - Edlesborough Green – 7:15 – 8:00pm – www.simplesfitness.com
- Thursdays Tae Kwon-do, Dagnall Village Hall, 5.45-7.30pm 07813 755785
- Thursdays Clubbercise 7.30 - 8.30pm. Eaton Bray Hall - Gina Flitton 07846421756

Village Diary June 2016

Fridays	Keep Fit class, Edlesborough Memorial Hall 10 - 11am
Fridays	Tap & Ballet Classes, JoAnn Latus School of Dance, 4-8pm, Eaton Bray Village Hall, 01582 620576
Fridays (term time)	"Little Luvvies" baby ballet classes 10am-11.30am. Contact Emma Whittemore on 01525 376124
Fridays (term time)	Kids Club 6:00pm to 7:00pm Grace Baptist Church, Moor End, Edlesborough (across from the post office) Frances King 01525 229610
Fridays	Stay & Play toddler group, 'Musical Monkeys' at the Eaton Bray Village Hall, 10-11.30am, £4.50 for one adult and child, £1 for extra children/adults, 0-6months free
Saturdays	Jazzercise, 9.30-10.30am, Eaton Bray Village Hall, Angela Veryard, 01525 715208
Saturdays	KFPA Musical Theatre classes 4+yrs www.kfpa.co.uk, 10am, Edlesborough Memorial Hall
Sundays	Sundays Worship at 10:30am and 6pm Grace Baptist Church, Moor End, Edlesborough (across from the post office). Barry King 01525 229610
Last Sunday	Messy Church, 3-5pm at The Salvation Army Booth Place
Monthly	
1st Monday	Eaton Bray Parish Council Meeting, 7.30pm, The Coffee Tavern (except January-2nd Monday)
1st Monday	Eaton Bray W.I. Meeting, 7.30pm. Eaton Bray Methodist Church Hall. Contact Margaret Jones on 01525 220991
1st & 3rd Tuesday	Dunstable & District Orbit (social and charitable) Club meet at Dunstable Rugby Club at 8pm. For details contact 01525 222441 or 01582 755147
1st Saturday	St. Mary's Church, Eaton Bray Coffee Morning & Plant Sale, 10:30am - 12 noon
2nd & 4th Tuesday	TOTS, St Mary's, Eaton Bray, 2pm
2nd Tuesday	Dunstable & District Local History Society meeting, 7.45pm, Methodist Church Hall, Dunstable (opposite Wilkinson)
2nd Tuesday	Edlesborough W.I. Meeting, 7.30 pm, Edlesborough Memorial Hall
2nd Wednesday	St.Mary's Ladies Guild, 2pm, St.Mary's, Eaton Bray
2nd Wednesday	Eaton Bray & Edlesborough Lions Club, 7.30pm, The Coffee Tavern
2nd Thursday	CAMEO Coffee, tea & chat, 10am-12noon, Edlesborough Methodist Church
2nd Saturday	Workshops Dynamic Yoga 9.30-11am £10 Eaton Bray Coffee Tavern, Keira 07936 693696
3rd Thursday	Edlesborough Parish Council Meeting, 7.30pm, Memorial Hall
3rd Sunday	Lunch club 11.30 to 2.00pm, Eaton Bray Village Hall, Chris Hewitt 222288
Last Saturday	Coffee Morning, 10:30-12 noon, Edlesborough Methodist Church
Last Sunday	Messy Church, 3-5pm, Salvation Army, Booth Place, Eaton Bray, 07932 057490
Other Regular Events	
5th	Beds Area Narrow Gauge Model Railway Club Meeting, 11.30am-4.30pm, Eaton Bray Village Hall
10th	Leukaemia Research Coffee Morning including plant bring and buy, 2 Dunstable Road, Dagnall 10.30 am. All welcome.
21st	Dagnall Over Sixties Garden Party at Brian and Rosemary's at 6 Dunstable Road opposite the village hall at 2pm. There will be a raffle and ice creams.
23rd	ELF visit to Hughenden Manor
27th	ELF walk from Eaton Bray church, 9:30am
One Off/Annual/Irregular Events	
9th	Northall & District Age Concern AGM, 7pm, The Coffee Tavern Eaton Bray
10-11th	13th Eaton Bray Village Hall Beer & Cider Festival, midday to 11pm
11th	St Giles, Totternhoe Summer Fayre, 12-3pm, Totternhoe Recreation Ground

Village Diary June 2016

One Off/Annual/Irregular Events

- 12th Edlesborough Community Sports Club Family Fun Day, Edlesborough Green, 11am-3pm, races, BBQ, music, stalls etc
- 12th Northall Village Hall AGM 12 noon, followed by BBQ, band, stalls and games from 12:30 onwards. Tickets from the Swan, Edlesborough School & Janes
- 19th Marsworth Steam & Classic Vehicle Rally, 11am -5pm, Startop Farm, Marsworth
- 23rd EDaN community Transport volunteer driver thank you, 7pm, Red Lion, Dagnall
- 24-26th Edlesborough Festival, Edlesborough Church, Choirfest, Flowers with Phrena, Music etc. Tickets available from Janes



Eaton Bray Good Neighbours Update

A very big thank you to all Eaton Bray residents who completed the recent Survey about the Good Neighbour Scheme. As a result the Scheme now has some twenty local volunteers and a steering group. We also have an indication of the type of assistance we can give to villagers, once we are up and running.

Several meetings have now been held at the Salvation Army Church Hall, both to explain how the Scheme works and for volunteers to get to know each other. In the next few weeks the steering group will get all the necessary administration in place, agree a name for the Scheme and most importantly organise a Helpline number.

Any resident requiring assistance can contact us on this Helpline number, 9am to 5pm, Monday to Friday. We can put you in contact with one of our volunteers, who will then assist you. Any out of pocket expenses, such as fuel costs will be agreed with you, according to a published scale This is reimbursed to the volunteer.

The Helpline number will be widely publicised, so watch out for when we actually go live! Remember all our volunteers will be DBS checked and fully insured.

So, for example, if we can help with any of the following services, just give us a call.

Transportation to the surgery, to hospital, prescription collection, minor shopping, errands, lifts to day centres, form filling, letter writing, checking bills, small diy jobs around the home, walking your pet, or just dropping in for a cup of tea and a chat!

For more information please contact Simon Patterson on 01582 419 487 or email simonp@bedsrcc.org.uk

All Saints Church

Dagnall

Invite you to attend their



Ploughmans Lunches

Saturday 9th July

11.30pm until 2.00pm

All welcome



Village Notices



EDaN Community Transport
Peter Williams: 01442 842506

Village Hall Bookings

To book your local village hall for an event please contact the following:

Northall: Lorna Cabbage Tel: 07587 318696 Email: northallvhbookings@gmail.com

Eaton Bray: Norman Lee Tel: 01525 222831

Email: bookings@ebvh.co.uk Website www.ebvh.co.uk

Dagnall: Elizabeth Coates Tel: 01442 842550

Edlesborough Memorial Hall: Penny Pataky, Tel: 01525 229358

Email: manager@edlesborough-pc.gov.uk

Police Contact Numbers...

making neighbourhoods safer together

General Assistance (Recommended Number): 101 Emergency: 999

Bedfordshire Police (Eaton Bray)

Leighton Buzzard Police Station/Kathryn Horgan: 01582 473411

Typetalk: 18001 01582 473418

Email: LPT.LeightonBuzzardLinslade&Rural@bedfordshire.pnn.police.uk

Thames Valley Police (Edlesborough, Dagnall & Northall)

PCSO Jackie Dodson Mobile: 07800 703 524

Email: NHPT@thamesvalley.pnn.police.uk



EATON BRAY PARISH COUNCIL



Please come and help to run your village **BECOME A PARISH COUNCILLOR**



The Parish Council is nine members of the public

We come to each Parish Council Meeting in the Coffee Tavern on the 1st Monday of each month and spend on average around five hours each month advising and helping to run our village.

At present we have a vacancy – will YOU come and join us?

If yes, please contact the Parish Clerk

You can also view our website for more details



Heidi Head, Parish Clerk & RFO

Email: clerk@ebpc.co.uk - Telephone: 01525 221464 - Website: www.ebpc.co.uk

Office Hours: Tuesday/Thursday/Friday 09:30-13:30hrs [messages can be left on answerphone]



Services at St Mary's Church

SUNDAYS : 8.00am HOLY COMMUNION
10.00am PARISH SUNG HOLY COMMUNION

On Third Sunday of each month:

10.00am – WORSHIP FOR EVERYONE a shorter, less formal service for families. (For anyone wishing to attend a service where Holy Communion is offered, there is a Family Communion at 10.30am at All Saints' Church, Dagnall, where visitors are assured of a warm welcome).

WEEK-DAYS:

Tuesday: 2.00pm TOTS (Tots on Tuesdays) (2nd & 4th Tuesdays)

Wednesday: 10.00am Holy Communion

EVERYONE WELCOME AT THESE SERVICES



13th Eaton Bray Beer Festival Friday 10th and Saturday 11th June

Yes we are nearly there again and can you really believe that we have been going 13 years!

This year we are again pushing out the boat, with 30 beers plus ciders and perrys. The small hall will be full of good cheer from noon on Friday until 11pm Saturday night.

In the meantime, in the main hall: on Friday night we have Jerome Chance doing one of his great sets, which are fabulous to just listen to or, if you prefer, take a trip down memory lane and dance the night away.

Come Saturday afternoon (about 2.30pm) Smartie Artie will give those who are younger, (or who are living their second childhood!) a magic show that will enchant them for an hour or so. Next up will be The Dicemen, who we welcome back for a second year. Then later a new band for us, the Freight Train Riders. We know you will enjoy their music and some of you may have heard them at the open days at the Leighton Buzzard Brewery.

We trust that you will join us at this, the second largest gathering in our villages when everybody seems to have fun.

Before I finish, I must mention the Village Hall's 21st Quiz that took place on the 16th April. 160 people sat down to a fiercely contested quiz. The questions, set by master quizzier Keith Blackburn, led to a tie for first place. The tie breaker was won by Quizzie McQuizFace (don't ask me) who beat The Imbibers (my sort of team). In fact the top 9 teams were only separated by 3 points.

Last, but by no means least, came the Famous Five. To be fair, they had lost 2 members at short notice, but as a consequence got to share 8 boxes of chocolates between the five! The profits for this event are shared equally by the Eaton Bray Tennis Club and the Village Hall. Our next quiz is on the 29th October and I don't want to rush anybody, but 5 teams are already entered.

For more information on either event please contact me, Ross, on 221411 ross.bagni@btinternet.com

A Letter from Rev'd Coralie

Vicar: Coralie McCluskey

The Vicarage, 11 High Street, Eaton Bray - Tel: 01525 220261

Honorary Assistant Priest: Revd John Heffer

Reader: Gordon Gray (220136)

Church Warden: Catherine Hayden (220527)

Email: admin@stmaryseatonbray.org.uk

www.stmaryseatonbray.org.uk



*March went out like a lion
Awakin' up the water in the bay;
Then April cried and stepped aside,
And along came pretty little May!
May was full of promises
But she didn't keep 'em quickly enough for some
And the crowd of doubtin' Thomases
Was predictin' that the summer'd never come
June is bustin' out all over
The feelin' is gettin' so intense,
That the young Virginia creepers
Hev been huggin' the bejeepers
Outa all the mornin' glories on the fence!*

I've always enjoyed musicals, the songs are easy to sing along with and musicals usually have a happy ending. Travelling around the Diocese, with my rural hat on, is a joy at this time of the year. The hedgerows, before they have the short back and sides treatment, are beautiful and bursting with life. The Vicarage garden has been glorious with a riot of colour, plant and bird life. However it is not fit for Open Gardens, it's wild in the true sense of the word and teeming with bird and insect life. The primroses have been in flower for months, the bluebells have only just died off and *Anthriscus sylvestris* (cow parsley) is rapidly taking over the woodland edge. Cow parsley is one of the most familiar wild plants of the British countryside. Throughout the month of May, most roadsides are lined with the white flowers, seemingly impervious to traffic pollution, salt-spray and regular mowing by the highway authorities. The plant has a number of local names; hedge parsley, wild chervil and Queen Anne's lace. The latter apparently arose from the days when Queen Anne travelled in May, and people believed the roadsides had been decorated especially for her.

In the church and community the sunshine, warmth, beautiful hedgerows, gardens and road edges I hope have helped to alleviate the pain and grief many families have experienced in our villages over the last few months.

I look forward to a number of weddings at St Mary's in July and August and an increased number of Christenings. These occasions help to restore the balance between grief and celebration that we all experience at some time in our lives.

Finally, you may have heard by now, if not, I will be leaving the four villages at the end of August and moving to mid Wales. I will be sorry to leave but my energy levels are running out.

Coralie

EATON BRAY PARISH COUNCIL

Speeding is a problem in this village

Why don't you become a volunteer with Speedwatch and help us to reduce the menace of speeding.



If you would like to get involved in trying to slow down traffic in the village and are concerned about road safety please contact Cllr. Mark Tomkins, on 07810-753878 or email council@marktomkins@gmail.com.

Thank you for your support



TREES ON EDLESBOROUGH GREEN - EYES NEEDED!

The EDaN Beautification Team have been putting in a lot of time and effort recently planting new trees on Edlesborough Green.

These are being provided with a view to the future of the Green as many of the existing trees are becoming old or may succumb to Ash Die-Back.

It was with great disappointment that we heard at our meeting in May that some of the new trees on the Green are being damaged. The new Village Christmas Tree was almost uprooted and has been replanted in an upright position with difficulty. Several of the support stays on other trees have been removed or damaged. Obviously no one knows who is responsible for the damage but it is likely it is people who will benefit from the beauty and shade of the trees in years to come but who are, perhaps, too stupid to realise it!

We would like to enlist the help of everyone who uses and values the Green to keep an eye open and help us to protect the trees from further damage while they are being established. The Team are about most days – and some evenings, keeping an eye open, and watering, and we would be very grateful if you could let us know if you spot any untoward behaviour. The Parish clerk, Penny Pataky, has contact details for most of us or you can contact me directly on 01525 220361.

Many thanks.

✉ Lorna Cabbage.



UNICORN WINDOWS LTD

“WHERE QUALITY & SERVICE ARE NOT A MYTH”

www.unicornwindows.co.uk

Tel: 01525 854272



Unit 3 Youngs Industrial Estate, Stanbridge Road, Leighton Buzzard

comput@mation

computer support & services

Computer Support for Business & Home

Problem Solving:

Virus & Spyware Removal
Internet & Email Assistance
Fault Diagnostics
Repairs & Upgrades
Slow Running PC's

Sales:

Desktops, Laptops & Tablets
Printers & Peripherals
Software

Services:

PC, Mac & Linux Support
Wired & Wireless Networks
Data Recovery
Install & Set-up
Health Checks

On-site Visits:
Office Hours & Evenings
by appointment

For friendly advice call John Wallace: 07968 536068 or 01525 261381
Email: john@computamtion.co.uk
Web: www.computamtion.co.uk

Computamtion Services Ltd - Est.1999 with over 25 years experience
9a Lower Way, Great Brickhill, Buckinghamshire, MK17 9AG

Carpet & Upholstery Cleaning

Professional & Local

All work guaranteed - not happy, don't pay

Powerful equipment means drier much quicker than other methods

100% Guaranteed no chemicals left in carpet when dry therefore will not easily resoil & perfectly safe for children & pets

Recommendations account for 90% of my work

Absolutely no hard sell

Telephone Colin for a Free Quote

DEEP-CLEAN

01525 851 811

www.deep-cleaners.co.uk

Email: colin@deep-cleaners.co.uk

EDLESBOROUGH SURGERY

11 Cow Lane Edlesborough

Enquiries - 01525 221630 Appointments - 01525 220333

www.edlesboroughsurgery.co.uk

Dr J R Bell, Dr Heather Counsell

Dr Tisha Patel

Dr Stephanie Johnston, Dr Kirsten Riemer

Friendly village Practice offering a wide range of health services including coils/implants, minor surgery, travel advice, in house blood tests, on-line appointments and repeat prescription ordering. Four Nurse Practitioners offering acute clinics with same day appointments. Also, midwife, health visitors in attendance. Local District Nurse Service.

Long established training Practice with a rotation of qualified doctors.

EDLESBOROUGH PHARMACY

01525 223181

Pharmacist – Mitul Patel

Friendly reliable professional service at the pharmacy

All doctors/dentists/veterinary and hospital prescriptions dispensed

Professional advice always available

Herbal/Homeopathic products

Special Orders on request



For all your painting & decorating requirements
 Domestic and Commercial
 call Max for a free estimate with no obligation
maxbro@btinternet.com



City & Guilds
 Qualified

- **Plumbing** - Showers, Toilets problems, Baths, Outside Taps, Drips & Leaks, Radiators, Tiling
- Specialising in Full or Partial Bathrooms Installations (References available on request)

Call Mark for a FREE no obligation quote **01525 220994**
 All work fully insured and guaranteed. **07842 653832**

30 Years Experience
Domestic & Commercial Security



Burglar Alarms
Redcare Monitored Systems
Intercoms
CCTV
Access Systems
Locks



CERTIFICATE NO. NAC/G/2113

Quality Installations – Competitive Prices
Insurance Approved **Free Surveys**

AAA SECURITY

01525 378222

Email: sales@aaasecurity.co.uk

www.aaasecurity.co.uk





Local family run business - Not a franchise

All chemicals used are Eco-friendly, non-toxic, non caustic and non allergenic
All work guaranteed and fully insured

All products are Child, Pet and Pregnant Safe

- Ovens & Hobs
- Extractor Hoods
- Microwave Ovens
- Agas
- Fridges
- Carpets
- Rugs
- Upholstery
- BBQs
- Freezers



☎ 01525 22 19 22 or 0800 122 3393

🌐 www.ecotechovenandcarpetcleaning.co.uk

@ info@ecotechovencleaning.co.uk

Dominic Woolcott

Painter & Decorator



- Internal & External
- Plastering & Coving
- Insurance Work
- 20 Years Experience
- Competitive Rates

**For a professional job call:
01525 229682 or 07747 042879**

P. DYER ELECTRICAL

For all your Electrical & Testing & Inspection needs

- Re-wires
- Testing & Inspection
- Security Systems/Lighting
- LED & Low Energy Lighting
- Decorative Lighting
- PAT Testing
- Fuse Boards
- Fault Finding/Repairs

Fully insured, Part P registered, all work guaranteed.
Fast, friendly, reliable, local electrician. For a free,
no-obligation estimate, call Paul on:



Tel: 01525 222109
Mobile: 07850 682815



David John Harris
Green Fingers
(Established 1992)

All Fencing Work • All Gates • Paving • Patios
Driveways • Shingle • Hedge Setting and Cutting
Grass Cutting • Turfing Specialist • Exterior
Painting Service • Sheds Small Building Work
Trees & Shrubs Supplied

Tel/Fax: 01525 221745
Mobile: 07889 143713

Barry Cato
Motor Repairs
Est. 1981

Servicing, repairs and MOT's arranged

Workshop at:
r/o Norfolk House Farm, Harling Road
Eaton Bray, Dunstable, Beds, LU6 1QY

Tel: 01525 221681 (workshop)
07836 650015 (mobile)

GYM & TONIC

WANT TO GET FIT, HAVE A HEALTHIER LIFESTYLE & IMPROVE THE WAY YOU LOOK & FEEL?

The following can be provided in our Gym in Edlesborough or in your home

* **A Health & Fitness Consultation** *
* **Personal Training** * **Massage** *

Ruth Anderson Dip. PT & ST, Member of: Inst of Sports Therapists & Register of Nutritional Therapists

Tel:01525 223074 Mob:07812 163979

D NICHOLSON
PLUMBING REPAIRS
and **INSTALLATIONS**
NO JOB TOO SMALL

• Emergencies • Free Estimates
• No call out charges

Dave Nicholson

MOBILE: 07976 975604
HOME: 01525 872335

City & Guilds Qualified

For all your building needs look no further



BRIGGS

BUILDING & CARPENTRY SERVICES



Established 1981

For a professional, friendly service call:

(01525) 221767

(07970) 214439

Domestic & Commercial

Extensions
Renovations
Conversions
Alterations

New Builds
Roof Repairs
Kitchens
Bathrooms

Patios
Driveways
Decking
Garden Walls

Mini Digger, Skip Loader and Dumper Hire

All Work Guaranteed

Free Estimates



Flicks & Bangs

HAIR SALON

A warm, friendly salon offering a wide range of bespoke hair services for all the family. Feel free to pop in for a complimentary consultation.

www.flicksandbangs.com

Flicks & Bangs

66 High Street
Eaton Bray
Nr. Dunstable
Beds LU6 2DP

01525 221252



Opening Hours

Mon Closed
Tue 9 am - 5 pm
Wed 9 am - 5 pm
Thu 9 am - 8 pm
Fri 9 am - 7 pm
Sat 8 am - 4 pm
Sun Closed

pinstripes signs
pinstripes graphics
pinstripes clothing

01525 220485
07973 167779



BUSINESS CARDS

www.pinstripessigns.co.uk
find us on facebook
 pinstripes signs graphics clothing

WASHING MACHINE REPAIRS

ALSO
 DISHWASHERS, TUMBLE DRIERS,
 AND ELECTRIC COOKERS



Call
ANDERSON D.R.S.

01582 665764

www.andersondrs.co.uk
 SALES AND RENTALS AVAILABLE

 **Lee Hutt**
 Heating & Plumbing Services

Bathrooms, Design & Installation

Tiling ♦ Heating ♦ Powerflushing ♦ Taps ♦ Leaks

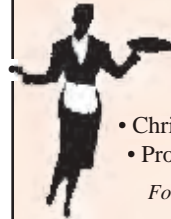
Call Outs ♦ Free Estimates Given



01525 222145



07971 559185



Patricia's Cuisine

Catering For All Occasions

- Buffets, Dinners •
- Christenings, Weddings, Funerals •
- Promotions & Business Lunches •

For Enquiries & Menu

Meadside Farm, 104 High Street,
 Eaton Bray, Bedfordshire, LU6 2DP

Telephone: 01525 222174

P.J.BRINKLOW

Electrical Contractor

01525 220469

07860 781330

**43 Pebblemoor
 Edlesborough**

'A wonderful place to be'



Eaton Bray Academy



T. 01525 220468

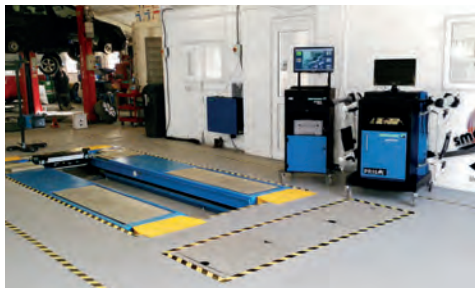
E. admin@eba.ec

www.eatonbrayacademy.co.uk

smartAUTOGROUP

ESTABLISHED LOCALLY FOR 14 YEARS

Fully equipped Car Bodyshop, Service Workshop
& MOT Bay



- New MOT Bay
- 4 Wheel Alignment & Tyre Fitting
- Specialists in Complete Classic Car Restoration
- Dealer Trained Technicians
- Ford, Vauxhall, VW, Audi
- Extensive Experience in Prestige Car Paintwork and Repair
- One-Stop-Shop for all your Servicing, Repairs, Bodywork & Maintenance
- Accident & Vandalism Damage
- All Insurance Work Undertaken - We can also cover your Excess and provide a Courtesy Vehicle (subject to T's & C's)
- Mobile Car Body Repairs – Fully Equipped Vans that come to your Home or Office.
- Alloy Wheels – Dents - Bumpers – Chips – Scratches - Scuffs
- Free Collection and Delivery, Loan Cars and Lifts when required

We pride ourselves on always being competitive for the right job.

**£10 OFF WITH
THIS ADVERT**



Call us on **01582 664772** or visit **www.smartautogroup.co.uk**

Units 17 & 18a, Icknield Way Farm, Tring Road, Eaton Bray, Dunstable LU6 2JX

Martin Simpson

*"One of the finest acoustic
and slide guitar players
in the world"*

Edlesborough Festival 2016

June 24 - 26

St Mary's Church,
Edlesborough, LU6 2EP



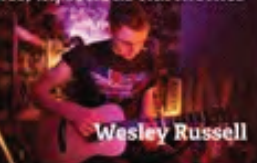
Kimber's Men

Traditional sea songs and shanties

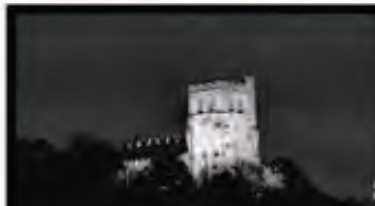


Tinlin

Tight melodies, infectious harmonies



Wesley Russell



Edlesborough Festival 2016

St Mary's Church, Edlesborough, LU6 2EP
www.edlesboroughchurch.org.uk

Friday June 24th

Kimber's Men

Support Act - Wesley Russell

Saturday June 25th

Martin Simpson

Support Act - Tinlin

Kimber's Men - £12.50 £15.00 on door (subject to availability)

Martin Simpson - £13.00 £15.00 on door (subject to availability)

**Tickets: Janes of Edlesborough (cash or cheque)
or call 07974 921923 or email wyn.johns@gmail.com**

Doors open 6.30pm Music at 7.30pm

'Licensed Bar, Great Music, Stunning Location!'

Many thanks to J. Able Bathrooms for helping to fund an essential facility at the Festival - the toilets!; to NMJ Motorhouse for contributing to the purchase of gates for the festival car park; and Oakman Inns and Restaurants of Tring for providing overnight accommodation for Martin Simpson at the King's Arms Hotel, Berkhamsted.

**Oakman**
INNS & RESTAURANTS



FRIDAY 24TH JUNE: * *Flowers with Phrena* (free) 10.00am-12

* Please book for this: - Tel: 01525 220739 / chris@brooklyns.org.uk

Kimber's Men: Still singing up a storm ... Don't miss these guys!
Supported by local singer/songwriter *Wes Russell* 7.30-10.30**

SATURDAY 25TH: '*Children's Choirfest*' (free entry) 2.15-4.15pm

Martin Simpson: awarded BBC Radio 2's Folk Musician of the Year
also *Tinlin* - who return with their easy harmonies 7.30-10.30 **

** Book either/both nights' tickets from Janes Ltd (cash/cheque) or email wyn.johns@gmail.com Tel :07974921923(Fri.£12.50:Sat.£13.00) Tickets on the night subject to availability - all £15 on the door. Doors open 6.30pm

SUNDAY 26TH: *The Bells! The Bells!* - our local team 4-5pm
Evensong with Rev'd Coralie Spread the word 5.00pm

Local ales, wines, Pimms, soft drinks, nibbles and cream teas.
Great music and good times + a view to take your breath away!

St Mary's Village Carnival 2016



2nd July 2016



Myths, Monsters & Magic

www.stmarysvillagecarnival.com

Carnival is now only a month away on 2nd July, so this is probably the last Carnival Focus article many will see before the event. If you want to be involved now is the time to do it! The Carnival Website and contact details are towards the end of the article.

Carnival Queen 2016



This year's Carnival Queen, Princess and attendants were chosen by draw on Sunday 17th April. Here are the lucky winners:

Front row: Millie Christie, Carnival Queen and Daisy Potton, Carnival Princess.

Back Row: Isabel Marsh and Frida Merino, Attendants.

The girls will be leading the carnival procession on the day in a suitably elegant limousine.

Carnival Procession for ALL Families

This is final reminder before 2nd July that this year there will be a new category in the procession for all **FAMILIES**. Decorate your car full of Zombies, a van and/or trailer as a Ghost Train or plant a Ghoul on your bicycle. This will open up the carnival procession to anyone who wants to

have a go!

Remember there is also the house decoration competition along the procession route. This year we can look forward to all manner of monsters and scares as we head through the villages.

An Ongoing Appeal to Local Businesses and Organisations

Once again this is an appeal to local businesses as well as schools, youth groups, and organisations to get involved in the Carnival and have your organisation promoted during

this event. The ever increasing foot print of the Carnival, with visitors from Aylesbury, Milton Keynes, Dunstable, Luton and Hemel Hempstead, is an ideal vehicle for promoting your business. As an organising committee we can work with you to find the best means of advertising your businesses to the crowds who attend the Carnival if you give us a chance to do so. Here are a few ways that the Carnival could work for you:

- Advertising in the arena.
- Have a float in the Carnival procession.
- Have a stall at the Carnival.
- Donating a prize for the Grand Draw.
- Donating a prize for the Silent Auction.

All details of Carnival 2016 including how to book a stall, arrange advertising, offer prizes and much more can be found on the Carnival website:

www.stmarysvillagecarnival.com

Can You Donate A Prize or Your Time?

The Carnival Committee is always looking for people who can help in a variety of ways:

- Manning stalls
- Helping in the tea tent
- Driving a vehicle
- Acting as a marshal for the procession
- Supervising the car parking
- Picking up litter
- Baking cakes
- Tossing a sausage at the BBQ



There are other ways of supporting the Carnival by donating equipment, money or prizes for our Grand Draw, Silent Auction and Tombola. For those with green fingers perhaps you could take a few cuttings and donate to the successful plant stall.

As vital as these activities is help with bringing equipment to and from the Green before and after the event. It's never too late to offer your help for this year. Whether you can spare an hour or all day to help we can find something for you to do and I can assure it's as much of a hoot spending an hour or two at a stall or meeting new people setting up the carnival as it is attending the event itself!

For any specific questions or if you would like to get involved with organisation of the carnival either by helping for a few hours on the day or providing assistance in the coming month contact Gordon Gray on 01525 220136 or through the carnival website above.



Here's looking forward to a "FRIGHTFUL" Carnival on 2nd July!



Edlesborough Parish Council News

Including Edlesborough, Dagnall and Northall

June 23rd Euro Referendum - Are you registered to vote?

To check your registration and register call 01296 585807. Or go online www.gov.uk/register tovote.

More information can be found at www.aboutmyvote.co.uk

Thames Valley Police Report 2015/16

PCSO Jackie Dodson attended the Annual Parish meeting and reported that there has been an unusually high number of vehicle crimes for the area; with thefts from 13 vehicles over the past year. Some offenders have been apprehended along with £1000's of recovered equipment. TVP ask that owners be more security conscious and ensure they mark their tools and belongings with permanent marker pen to enable the police to return them.

Crime Figures:

Burglary dwelling - 3

Burglary Non Dwelling - 3

Theft in a dwelling - 1

Vehicles Interference - 5

Criminal Damage: - 4 to vehicles, 3 to other

There are no reports of anti-social behaviour.

PCSO Dodson confirmed that she has served the community for 11 years and that her position is fully funded by TVP at Wing so the parish is not currently in danger of losing her services.

Chairman's Report for the Annual Parish Meeting

The Chairman, Cllr Alan Williams, gave a 'PowerPoint' presentation of the Council's various activities during the past year.

This included a review of major projects set for the parish for the year April 2015 to March 2016 and accomplished successfully.

- Streetlights -virtually complete
- New Pavilion supported by EPC – planning approved
- Devolved Services from Bucks CC – new contract in place for April 1 2016
- New financial software and on-line banking – in place
- Neighbourhood Plan or updated Parish Plan? – Neighbourhood Plan underway October 2015

The one area of disappointment was the new housing application opposite the school that was opposed by EPC but granted by AVDC

We are pleased to continue to support our EDaN Teams. We celebrated the installation of the Floodlights at the church by the Friends of the Church on the Hill, the success of the Traffic Management Team in persuading BCC to downgrade the A4146 and approved a new tree planting scheme proposed by the Beautification Team. The Community Car Scheme continues to provide a valuable service to parishioners and will welcome new drivers to the scheme.

The projects for the current year to March 2017 are

- Full implementation of Devolved Services

- Catch up on the services neglected by BCC
- Implement a new Parish Council website
- Finalise, together with Edlesborough Community Sports Club, the direction for the new Pavilion
- Implement key projects e.g. Defibrillators
- Complete the Neighbourhood Plan successfully (see current status below)

The Chairman thanked County Cllr Avril Davies, District Cllr Chris Poll and the parish councillors for their work on behalf of parishioners. In addition, thanks were given to the many volunteers who support the Parish Council as allotment wardens, EDaN Volunteers, charity trustees, sponsors and all the many unidentified parishioners who help keep the villages tidy.

A copy of the presentation will be posted on www.edlesborough-pc.gov.uk

Edlesborough Parish Neighbourhood Plan

The work on the plan continues in earnest with Village Task Groups focused on determining the key issues of new housing, location and design criteria. The current information can now be found on the parish website.

www.edlesborough-pc.gov.uk under 'Planning'

Three Neighbourhood Plan 'Open House' events will take place in July to share the current status and to get feedback from parishioners on the proposals.

Tuesday July 5th at 7.30pm in Dagnall Village Hall

Saturday July 9th at 2.30pm in Edlesborough Memorial Hall

Monday July 11th at 7.30pm in Northall Village Hall

The information provided will cover the overall Plan proposals together with specific proposals for each of the three villages. Parishioners can attend any of the 'Open House' events as the information at each will be identical. Parish Councillors, Steering Group members and Village Task Group members will attend to provide information, answer questions and receive feedback.

Best Kept Village

Edlesborough has once again entered the Buckinghamshire Best Kept Village competition, judging will take place between 6th June and 8th July.

Edlesborough Green

We are extremely proud of our village green and love to see all parishioners enjoying this wonderful facility.

Now that the weather is improving and the green is being used even more please remind you children that the cricket square is **NOT** to be used for football games/kickabouts or picnics.

Please report

- any concerns or broken equipment to the manager on 01525 229358 or manager@edlesborough-pc.gov.uk

- any vandalism or inappropriate behaviour to Thames Valley Police on 101.

Reporting Pavement, Pothole, Fly Tipping & Rights of Way Issues

Please report any pavement issues, potholes, and Rights of Way issues to <http://www.transportforbucks.net/Tell-us.aspx> If possible please take a photo of the problem and upload it when making the report.

Please report fly tipping to <http://www.buckscc.gov.uk/environment/waste,-recycling->

[and-treatment/fly-tipping/report-fly-tipping/](#) or call 01296 480771 or 0845 330 1856.

Allotments

Edlesborough Parish Council currently has vacant allotments. Anyone wishing to take on an allotment should contact the Parish Clerk. Fees are £1:80 per pole and plots range in size from 5 – 20 poles.

Speedwatch

The EDaN Traffic Management team are looking for volunteers to help man their new Sentinel device. If you have an interest in slowing down traffic in the villages or are concerned about Road Safety, please contact Louise Turner on 01442 843123 or by email at louisefanthorpe@yahoo.co.uk



Edlesborough Parish Council Meetings

The next Edlesborough Parish Council Meetings will take place as follows

Dagnall Church Hall, Thursday 16th June 2016

Edlesborough Memorial Hall, Thursday 21st July 2016

The meetings will commence at 7:30pm.

All Parishioners are welcome to attend all Ordinary Parish Council meetings and may ask questions, raise issues and give suggestions during the Open Forum before the formal start of the meeting. The full minutes of the Parish Council meetings are normally available to view on the website or from the Parish Clerk.

EDLESBOROUGH PARISH NEIGHBOURHOOD PLAN SAVE THE DATES!

Three Neighbourhood Plan ‘Open House’ events will take place in July to share the current status and to get feedback from parishioners on the proposals.

Tuesday July 5th at 7.30pm in Dagnall Village Hall

Saturday July 9th at 2.30pm in Edlesborough Memorial Hall

Monday July 11th at 7.30pm in Northall Village Hall

The information provided will cover the overall Plan proposals together with specific proposals for each of the three villages. Parishioners can attend any of the ‘Open House’ events as the information at each will be identical. Parish Councillors, Steering Group members and Village Task Group members will attend to provide information, answer questions and receive feedback.

Current information can be found on the parish website www.edlesborough-pc.gov.uk under ‘Planning’.

Edlesborough Parish Council Contact Information:

Clerk: Penny Pataky 01525 229358 Office hours Monday – Friday 10.30am – 2.30pm

Email: clerk@edlesborough-pc.gov.uk

Website: www.edlesborough-pc.gov.uk

Facebook: www.facebook.com/EDANParishCouncil

relax



let us
take care
of the sale or
rental of
your home



Christopher Pallet
Professional advice since 1973

Don't just take our word for it

"I have let properties through Christopher Pallet for over 10 years. I run the local pub and always refer people seeking to buy or rent to Colin and Linda because of the 1st class service I have experienced over the years. Their personal attention and "nothing is too much trouble" attitude makes them number one in my book."

Tom Dunnell

"My family wish to express our very grateful thanks for all your great help and consideration over the years letting and selling our properties"

Moller / Hawkins Family

"Thank you so much, I'll be sorry to lose you, you've restored my faith in Estate Agents. The nicest and most decent I have ever met. **** & **** estate agents need to take a training course from you !!

Fiona Newberry



Christopher Pallet
Professional advice since 1973

Zoopla
Smarter property search

rightmove
the UK's number one property site

Ombudsman
Services
Resolving Consumer Disputes

Call Linda or Colin on 01525 222333

ASPECT

YOUR LOCAL ELECTRICIAN
TOTTERNHOE
OVER 20 YEARS EXPERIENCE

ELECTRICAL

CONSUMER UNIT UPGRADES (FUSE BOARDS)
LIGHTING - INTERIOR, EXTERIOR & SECURITY
REWIRING
NEW INSTALLATIONS
TESTING & INSPECTION

ALL WORKS TO CURRENT WIRING & BUILDING REGULATIONS
PART P CERTIFICATED & FULLY INSURED



CALL STEVE ON
07976 283969 / 01582 665068
aspect@sparky.me



IRON OUT

Complete Laundry Service
Shirt Service
Duvet Cleaning
Ironing

Free collection & delivery from
home or office

01582 667332 / 07885 320042
Email: ironout@aol.com

Anne Johnson D.O.
Registered Osteopath

6 Moor End,
Eaton Bray

01525 221958
07957 250682



R.J.O'CONNELL BUILDING SERVICES

EXTENSIONS, PATIOS,
DRIVEWAYS, ROOF REPAIRS
AND PROFESSIONAL
DECORATING SERVICE

TEL: 01296 681323
MOB: 07855 236726

Will Kimberley Garden Services 01442 255784

Phone for a free no obligation written estimate
wkgardenservices@btconnect.com

- High hedges a speciality
- Fences erected and repaired
- General garden tidy up's
- In fact any job in the garden!

EXCEEDING EXPECTATIONS IS JUST PART OF OUR SERVICE



If you're **selling**, **letting** or **buying** a home, make it happen with your local estate agent



01525 220605 • info@giblinproperty.co.uk
www.giblinproperty.co.uk

THE WORKTOP SPECIALIST

DELIVERING OUTSTANDING QUALITY & SERVICE FOR ALL YOUR WORKTOP & JOINERY NEEDS FOR OVER 50 YEARS

- FREE HOME MEASURING SERVICE
- CUTTING & EDGING SERVICE AVAILABLE
- VISIT OUR BRAND NEW SHOWROOM

Abbey Gate, Boscombe Road,
Dunstable, Bedfordshire, LU5 4FA

Tel: 01582 668 973 Fax: 01582 608 227
Email: sales@dunstablelaminates.co.uk
Web: www.dunstablelaminates.co.uk



@DLaminates



Dunstable Laminates



Make a Will

AND LASTING POWERS OF ATTORNEY

YOU DECIDE who is to run your affairs, who gets what, guardians etc, not the State.

MINIMISE RISK of Inheritance Tax and the disinheritance of children.

Best Price Guarantee

from specialist Solicitors and professional Will Writers since 1999



For a DAYTIME or EVENING appointment call

01525 220644

www.wisechoicewills.co.uk

MAKING A WILL
HAS NEVER
BEEN EASIER



Will Trusts & Probate Practice

A wise choice



Café masala

Exquisite Indian Cuisine

We Cater for Office or Private Parties and don't forget to try our Sunday Buffet

10% Discount on all Takeaway Orders Over £12

Fully Licensed & Air Conditioned

Open Seven Days a Week

Hours: 12 Noon to 2.30pm & 6.00pm to 11.30pm

Tel: 01525 22 22 64

63 Bower Lane · Eaton Bray · Dunstable · Beds · LU6 1RB

email: taraque@hotmail.co.uk · www.cafemasala.com

alto window cleaning

For a professional service.....

- Window cleaning
- Conservatory cleaning
- Fascia & gutter cleaning

07876 594186

AARON FENCING

ALL TYPES OF DOMESTIC & COMMERCIAL FENCING & DECKING WORK UNDERTAKEN

FREE ESTIMATES
FULLY QUALIFIED & INSURED
PERSONAL SERVICE AT COMPETITIVE PRICES

TEL: 01582 665779
MOBILE: 07798 927272

7 STATION ROAD, DUNSTABLE, LU5 4HS

Buy Direct From Our
Own Farm

Master Card

VISA

From Ivinghoe Turf

- Commercial & Domestic
- Small Orders Welcome
- Bark, Grass Seed & Fertiliser
- Laying Service
- Discount on Larger Orders
- Screened & Blended Topsoil
- All Year Availability
- Forklift Delivery Available



ROLAWN[®]
Approved Rolawn
Stockist

Family firm farming since 1949

ALL AREAS

Freephone :

0800 043 5061

www.ivinghoeturf.com

The Bungalow, Vicarage Farm, Ivinghoe, Leighton Buzzard

Established over 20 Years

Duncan Tomblin TREE SURGEON

Forestry Contractor • Tree Felling
Crown Reduction & Thinnings
Deadwooding • Hedge Cutting
Stump Grinding • Site Clearance
Private Agriculture Fencing Contractor
Chipper & Stump Grinding Hire
Digger Hire

FULL PUBLIC LIABILITY INSURANCE
FREE ESTIMATES

'The Best Choice For Your Tree'

TEL: (01525) 221946
MOBILE: (07802) 410728

12 Greenways, Eaton Bray, Beds

ARC Contract Services Ltd

- Painting & Decorating • Plastering
 - Wall & Floor Tiling • Door Hanging
 - Bathroom & Kitchen Installations
- 20 years experience

All work guaranteed and fully insured

Call Adrian : 01582 539179

Mobile : 07789730580



WESTROPE BROS.

LAWN MOWER SERVICES

ALL TYPES OF GARDEN MOWERS SERVICED

THE RYE, EATON BRAY

Tel: Eaton Bray 220587

Gas Boiler Servicing

Over 40 years experience

Have your boiler serviced by a **Gas Safe**
and **CORGI** registered engineer

Other services available:

Maintenance, repair and installation of all domestic gas appliances including LPG. Boiler installations, Landlord Safety Certificates and Power flushing.

Free Quotes, no call out fee, and free friendly advice on all of the above.

Edwards Gas & Heating Services

Eaton Bray

Tel 01525 220626

www.edwardsgasandheating.co.uk
stevethegas@orange.net



Vicky

The Dog Grooming Specialist
www.vickysdogcare.co.uk



With a reputation for offering an exceptional personal service



- Over 29 years of professional experience
- Trained at the London Academy of Professional Groomers to the highest City and Guilds standard
- Dorwest Veterinary Trained
- Member of the Pet Industry Federation
- Sympathetic and gentle handling of all dogs
- **FREE** Health check with every grooming session
- **No cages used! No cage dryers!**
- One to one personal attention.....loads of TLC

Where Dogs Come First!



Mobile: 07796 445416

Telephone: 01525 222775

Email: enquiries@vickysdogcare.co.uk



Committed to the highest standards of animal welfare and customer care

Over 30
Years
experience.
FREE
Quotes

Misty Double Glazing?

Over 30
Years
experience.
FREE
Quotes

**KEEP YOUR WINDOW FRAMES...
... WE JUST REPLACE THE GLASS!**

• UPVC • Aluminium • Or Wood

Because we replace just the glass the repair is a
Fraction of the cost of a complete replacement window.

BEFORE



AFTER



mistydoubleglazing.co.uk
QUALITY GLAZING SERVICES

01525 876808

WE ALSO REPLACE BROKEN...

• Glass • Handles • Hinges & Locks
AND REPAIR...Patio Doors & Conservatories!



Virtual administrative
support to businesses &
private individuals

Website hosting
Domain registration
Desktop publishing

01525 229695

Email:

enquiries@morenassociates.co.uk

www.morenassociates.co.uk

Absolutely Plastered

**DOMESTIC/COMMERCIAL,
CLEAN AND RELIABLE SERVICE,
FREE ESTIMATES, FRIENDLY ADVICE**



- * Plastering & Coving
- * Floor Screeding
- * Pebbledashing & Rendering
- * Dry Lining
- * Cornices & Mouldings
- * Insurance Work Undertaken

CALL NICK CONWAY ON

Mobile: 07751 830716

Tel: 01296 688981

6 Cotes Way, Wing, LU7 0RB

*HPC Registered
CHIROPODIST & PODIATRIST*



(Also Central Luton surgery - open 6 days)

*Stuart Ball
Ceramic Tiler
Specialist*

*at all aspects of
Wall & Floor Tiling
Over 33 yrs Experience*

01525 229381



Stephen D. Janes

(Established in 1982)

**CARPENTRY, JOINERY
KITCHENS FITTED
PROPERTY MAINTENANCE
TELEPHONE: 01525 220649**



01582 477568

07949 118011

**Fencing Panels • Blockpaving • Paths
Shingle Drives • Slabs • Paving
Steps • Gardenwalls • New Patios
Relaying • Soak Aways • Drainage
Free estimates or advice • References
www.gandjgroundwork.co.uk**

Neil Hodson Associates

*BUILDING DESIGN
STRUCTURAL ENGINEERING*

**PROFESSIONAL BUILDING DESIGN,
ADVISORY AND DRAWING SERVICES**

From plans for domestic extensions
to multi-storey offices, commercial
buildings and factories.

Structural surveys, site surveying,
advice on building defects and
Feasibility Studies

Planning Applications and Building
Regulation Consents obtained.

**24 HIGH ST TRING
Tel 01442 890894 OR
Edlesborough 222462**

J Able bathrooms

New Showroom NOW Open in Edlesborough

DESIGN

Free CAD design of your bathroom, This will help you a photo realistic finished plan of your design.

SUPPLY

Come and browse our display suites, This will help you decide on the perfect bathroom for your needs.

INSTALLATION

Our installations are of the highest standards!
We take pride in making you delighted with the finished result.

We have suites in a wide range of styles to suit your budget.
Drop in or ring to make an evening appointment at the showroom
or a home visit at your convenience.

Opening Times

Monday. 9am-5pm
Tuesday. 9am-1pm
Wednesday. Closed
Thursday. 9am-1pm
Friday. 9am-5pm
Saturday. 9am-1pm
Sunday. Closed

T: 01525 220043 M: 07891 449077

3 Summerleys, Edlesborough, Buckinghamshire, LU6 2HR
W: www.jablebathrooms.co.uk E: ableplumbing@hotmail.co.uk



EDLESBOROUGH TENNIS CLUB

Website by Jupiterwill

www.etctennis.org

Play tennis Have fun Socialise Feel good Join our club

Join via the website, or call Iona McLean-Hall on 01525 220562 for details



Eaton Bray Methodist Church

On the first Sunday in April Shepherd Combo led our service, giving the encouraging message that Jesus meets us at the time of our greatest anxieties. Continuing this theme in our Cafe worship on the second Sunday, Richard Armiger focused on the way that Christ helped the disciples to try new and different ways of doing things and showed us that we, too, should accept that with Christ the

impossible may become possible. The Rev Wallace Edwards made a very welcome return to our pulpit on the third Sunday. His theme was Jesus, the Good Shepherd, and he reflected on the shepherd's utter commitment to the needs of his flock, reminding us that God cares for our physical and material needs as well as the spiritual ones. As usual, our Communion service took place on the last Sunday in the month and was led by Rev Nigel Wright. His message concerned facing up to the challenges of obeying Christ's great commandment "that ye love one another". He highlighted the ease with which any of us can slip into an unhelpful patronising attitude and suggested it was good to recognise that we all fall short, inviting us to accept the unity of our common humanity and join in communion with God who makes us whole, individually as well as collectively.

On 16th April one of our former Sunday School scholars celebrated her 100th birthday at our church with a party of around 80 relatives and friends. Violet Smith (née Pipkin) was born in St Giles Yard, Eaton Bray on 16th April 1916. Her family have always been members of this church and one still worships here. Her sister Norah celebrated her 100th birthday here in 2003. Our Music Night on Sat 30th April, in aid of the organ fund, attracted a large audience and was a great success. We are grateful to Stephen Turner, the organist and the U3A choir under Elaine Trevor for their superb performances, as well as the many volunteers who gave their help.

Dates for your Diary:

Church Picnic at Ashridge Sunday 12th June, after the Service. You are very welcome to join us.

ILLUSTRIA

Kennels & Kathotel

Offering your pet a fully licensed Dog and Cat boarding service.

Purpose built Dog kennels

Individual Cat chalets with outdoor exercise runs

All in pleasant country surroundings

01582 ~ 665343



ILLUSTRIA
Springfield Road
Wellhead
NR Dunstable Beds
LU6 2JT



Proprietors

Mick, Denise and Michele Garrod



Live a healthy & active life

Free 10 minute advice chats with our Chartered Physiotherapists & HCPC Registered Podiatrists

PHYSIOTHERAPY
PODIATRY &
CHIROPODY
PILATES
ACUPUNCTURE
SPORTS INJURIES
MASSAGE
WOMEN'S HEALTH
& PREGNANCY
CARE

St. Judes

physiotherapy, health and well being

01525

377751

enquiries@stjudesclinic.com
www.stjudesclinic.com

N.D.S.

General Building & Plumbing
(25 years experience)

- Roofing; Installer of UPVC guttering, soffits & fascia boards
- Kitchens & Bathrooms fitted
- Property Maintenance
- Fencing • Patios & Block Paving
- Gazebos • Garden Structures

Tel: 01525 221470

Mobile: 07946 626564

FREE ESTIMATES

...

**ALL WORK CONSIDERED
NO JOB TOO SMALL**

For a top quality
decorating job call

Marc Flack

01525 223166

Trading locally for 10 years
References are available



TIME TO MOVE?

**Don't be alarmed,
we're here to help!**

Established in 1999

e: info@plummproperty.co.uk

Five Good Reasons to use **Plumm Property**

Pprivate Offices - direct savings to you on fees

Local Knowledge - from our highly experienced team

Unrestrictive contracts - no lengthy tie-in periods

Marketing to outside area - attracting London buyers

Managing all your needs with a 1st class professional service

From Offer through to Completion of Sale



01296 660230

www.plummproperty.co.uk



EATON BRAY PARISH COUNCIL



HIGHLIGHTS OF THE MINUTES

A full/detailed copy of the minutes for Eaton Bray Parish Council can be found on our website.

A hard copy of the minutes can also be viewed on the Parish Council's notice board at The Coffee Tavern.

Meeting of Eaton Bray Parish Council (PC)

Held on Monday 4th April 2016 from 7:30pm at The Coffee Tavern

Central Beds Council (CBC) – Councillor Ken Janes

Website: www.centralbedfordshire.gov.uk - Customer Services: 0300 300 8302 / Email: customers@centralbedfordshire.gov.uk

- Cllr. Cllr. Janes to look into official reporting procedures for those breaking the HGV Weight Restrictions through the parish, he will chase the police and CBC to find out what is happening. It was recommended that people still keep collating details of those not adhering to the restrictions for future records, forwarding a copy of their report to CBC to the Clerk who will also collate the details for reference.
- Reporting of HGV restriction offences: Central Bedfordshire Council, Highways Department
- Telephone: 0300 300 8049 - Email: highways@centralbedfordshire.gov.uk



Bedfordshire Police

If you wish to contact your Local Policing Team then please contact: **Non-emergency call 101 / All emergencies 999**

Highways Matters

- The Parish Council are always looking for volunteers to help with Speedwatch in the village. Let's stop speeding by working together. If you are interested in joining Speedwatch, then please contact Councillor Mark Tomkins on 07810-753878 or email councillormarktomkins@gmail.com.
- The Parish Council wished to remind residents that it has no parking control/jurisdiction of problem parking in the parish and to report any offenders to CBC Highways to look into and action accordingly. The Council will be placing letters on any vehicles that are causing a nuisance in the village with a reminder of their offence. A photo will be taken of the offending vehicle and details held on file with the Parish Clerk as evidence for action by CBC/Bedfordshire Police.



Neighbourhood Plan

The Neighbourhood Plan Steering Group are looking for help, if you can spare some time to support this important scheme then please contact the Parish Clerk who will forward your details onto a member of the Steering Group.

Vacancy - Parish Councillor:

There is a vacancy for a Parish Councillor on Eaton Bray Parish Council. If you are interested in joining the council please email the Parish Clerk or visit our website for more details

Parish Council Meeting Date: Held in The Coffee Tavern (1st floor)

Monday 6th June 2016 from 7:30pm



Heidi Head, Parish Clerk & RFO

Email: clerk@ebpc.co.uk - Telephone/Fax: 01525 221464 - Website: www.ebpc.co.uk
Office Hours: Tuesday/Thursday/Friday 09:30-13:30hrs [messages can be left on answerphone]

Follow Eaton Bray Parish Council on Facebook and Twitter

Keep up to date with what is going on in the parish



EDaN Community Transport

Invitation Thursday 23rd June @ 7pm

We would like to invite all our **volunteer drivers** for Community Transport, to the Red Lion public house, in Main Road North, Dagnall, on **Thursday 23rd June @ 7pm**.

We would like to say "Thank You" for the wonderful service you are providing for your local community and to chat about how everything is going for you as a volunteer for EDaN Community Transport. We will also take this opportunity to get some of your paperwork renewed as well.

If you have been thinking that you would like to do something to help your local community, then maybe you would like come along and find out a bit more. So please do join us and speak to some existing drivers and see how it all works. You will be under no obligation whatsoever if you decide not to join.

Please just turn up on the evening or if you would like any more information on any of the above, or would like to let me know you are coming, please give

me a call on 01442 842796 or 0779 0537032. Looking forward to seeing you all there
Best wishes

✍️Kathy Bovington and the Team
EDaN Community Transport - helping in the local community

To use EDaN Community Transport – please call Peter Williams on 01442 842506



Appledown's Rescue Dog of the Month

Ruby is a collie cross whippet and is less than one year old. If you look very carefully at her photo you will see that she has only three legs. One of her hind legs was removed

due to an injury but she copes brilliantly and it really doesn't hold her

back! She is a real little bundle of joy, bright and affectionate.

If you could offer Ruby or any of our other dogs a loving and secure home, please call in at the kennels any day between 10 a.m. and 4 p.m. or give us a call for more details. Please note that there are restrictions on rehoming adult dogs to families with children under seven years of age. Full details of the rehoming process can be found on our website or please contact the kennels.

Appledown Rescue and Rehoming Kennels Harling Road, Eaton Bray LU6 1QY

Call 01525 220383 or e-mail: appledown.kennels@btinternet.com

Website: www.appledownrescue.co.uk Follow us on Facebook & Twitter!



RESIDENTS of NORTHALL



Northall Village Hall Management Committee
(Northall Village Trust)

*AGM followed immediately by Village BBQ
and Queen's 90th Birthday celebration!*

AGM 2016

*Please
Join
Us*

12.00-12.30pm

Sunday 12th June 2016

at Northall Village Hall

Meet the Members of
NVH Management
Committee, share
your ideas and find
out what is planned
for your village hall!

Northall Village Trust - Registered Charity No: 1117673

OPEN GARDENS FESTIVAL 24 July 2016

Wanted - Gardens

In Eaton Bray, Edlesborough or Northall
Would you be willing to open your garden for the day to
help raise money for charity?

If so, or you would like more information, please contact
Kay Griffiths on 222849 or Gordon Gray on 220136.



Charles Hill Garden Services Ltd

Design - Build

Est: 2006

A professional company working with all your gardening requirements from design to complete landscape.

*NCH in Horticulture
City & Guilds in Garden Design*

Call Charles to discuss your garden plans today.

Mobile: 07773723236

Office: 01525 242065

charles@charleshillgardenservices.co.uk

accounts@charleshillgardenservices.co.uk

www.charleshillgardenservices.co.uk

fitness 4fun



Get those muscles working! Tone and strengthen arms, legs, bums and tums – you'll look and feel great.

Why not give it a go? Only £5 per week for one hour of fun fitness. Pay-as-you-go, come when you can.

Come along and join our friendly group.

Everyone welcome.

No need to book – just show up.

What: Fitness4Fun with Kay

Where: Edlesborough Memorial Hall

When: Every Friday, 10:00-11:00 am

ADRIENNE'S PRIVATE HIRE

Call for a **FREE** quotation
Book early to avoid disappointment
Very competitive prices

Airport Transfers
& Private Hire

07980 039715

Our executive Cars, 6 seater Minibuses and lady driver are all available



Barking Mad Dog Walking

Local dogs walks available

One dog - Half hour - £6
One Hour - £10

Two dogs - Half hour - £10
One Hour - £15

Contact Lucy on 07977711350
(Eaton Bray)

Kate on 07984874899
(Markyate)



GRASS ROOTS GARDEN MAINTENANCE

TREE SURGERY, HEDGE PRUNING,
SELECTION SUPPLY AND PLANTING OF
TREES, SHRUBS AND HEDGES.

REGULAR MAINTENANCE/ONE-OFF JOBS
(Fully Insured)

Brian McMahon NCH (Arb)

01525 221960



Edlesborough Flowers

Flowers, Gifts, Jewellery
& More...

2 High Street,
Edlesborough,
LU6 2HS

Tel: 01525 221920

Come and celebrate the Queen's 90th Birthday

Rockin' Live Band

SPARKIES Jazz Band back by popular request

Stalls & Games
Bouncy Castle Fun

Tickets can be bought from the Swan, Edlesborough School, Janes, or by emailing northallevnts@hotmail.com



It's BBQ Time!

Bar Available

Adults £5 and Kids £3
Under 5's go free

First burger or hotdog included in ticket price

Northall Village Hall
South End Lane,
LU6 2EX

JUNE
SUNDAY
12

NVT AGM 12.00

BAR, BBQ AND CREAM TEAS 12.30 ONWARDS



<https://www.facebook.com/Northallvillage/>

Edlesborough community sports club CIO (1160939)

Presents a

FAMILY FUN DAY

To mark the Queen's 90th birthday



Sunday 12th June 2016

11am-3pm on Edlesborough Green



Sports day races

BBQ

Sports fever

Music

Face painting

Stalls and games

Cake and drinks stall

Raffle – Prize include 2 tickets to Silverstone's British touring car championship, family pass to Woburn safari park, £25 voucher for the snow centre.



A huge THANK YOU, for supporting us to:

Edlesborough School

Mini masterpieces face painting

Silver Arrow Archery

Hines Butchers

Please like and contact us via our face book page –Edlesborough community sports charitable incorporated organisation

13th Eaton Bray Village Hall Beer and Cider Festival

Friday 10th June/Saturday 11th June



30 Real Ales + 2 ciders and 2 perrys
Soft drinks, lager and wine available

Hot food and BBQ available
All day

Live entertainment: Friday night - Jerome Chance
Saturday afternoon, 2.30pm, Family Magic Show
5pm The Dicemen

Saturday evening - Freight Train Riders
Fri - mid-day till 11pm, Saturday mid-day till 11pm

Entrance £3 by raffle ticket

Free to CAMRA members with card proof



French Evening!



Saturday 24 September 2016

Dagnall Village Hall

7.00 PM

**Come and enjoy a 3 course French Dinner
and lots of merriment!**

Price: £20 person

(includes classic French beef bourguignon and a glass of wine)

**To make your booking, please call Lynn on 01442 843608 or
blh_9@hotmail.com**

Come dressed à la française for the event!

**A prize will be awarded for the most outstanding appearance at
the end of the evening!**

All funds raised towards Dagnall Village Hall

Come for Coffee at St Mary's

For a warm welcome and
a cheering cuppa
on the first Saturday
each month in
St Mary's Church
Eaton Bray
10.30am - midday

Next Coffee Mornings:
Saturday 4th June
Saturday 9th July



Edlesborough School



Love is in the Air!

Excitement has come to Edlesborough School this month. Our much loved Site Manager, Football Coach and backbone to the school popped the big question to his lady friend one evening this month at a specially organised football game.

Adrian Bush, 21 again, organised for the EB Lions girls team to play a friendly against another local team so that he could propose in true romantic style. Unknown to the lovely Caron, Adrian had organised the football team to have letters attached to their t-shirts spelling out “Will you marry me?” At a predefined time, the girls exposed their t-shirts as Adrian bent down on one knee - ring in hand - to a very confused Caron. She replied a very emphatic yes to the delight of all attending.

Good luck Lovebirds, from all of us here at the school!



MARSWORTH

STEAM & CLASSIC

Vehicle Rally

Sunday 19th June 11am-5pm

Treat Dad to a fun day out on Fathers Day!

Startop Farm, Marsworth, HP23 4LL

B489 Ivinghoe to Aston Clinton road

We're doing it again!

And this years show promises to be bigger and better than ever!

A great day out for all the family. See historic steam engines, vintage tractors, classic cars, motorbikes and trucks at this fun day out – arena entertainment, stalls, sideshows and refreshments, live music, beer tent with local real ales and Pimms, tea and home-made cakes, ice creams, fish and chips, children's entertainment, bouncy castle and fairground, steam engine rides for children (of all ages) and much more.



Tickets: Adults £5.00, children £2.00

(All proceeds go to local fundraising and charities).

Treat Dad to a fun day out on Fathers Day!

For more information visit: <http://www.MarsworthSteamRally.co.uk>

We're looking for enthusiastic people to help on the day. Can you spare a few hours? It would be very much appreciated. Volunteering can be fun and a great way to meet new people.

Register your interest via the form on our website.

Buckingham County Councillor's Annual Report

Avril Davies, Ivinghoe Division Bucks County Council

I am mostly going to refer to finances in this year's report. I am going to paint a picture of not enough money and increasing demand for services. In no way am I an apologist for the ruling group on the local authority, because their priorities are very unlikely to be my priorities when cash is hard to find, but I am showing you how continuing spending cuts over 10 years, that's from 2010 until 2020, are hollowing out public services in this area.

2015 Council Spending Freeze

In November the County Council announced a freeze on non-essential spending. It stated that the council was taking decisive action to address a possible budget shortfall by almost £6 million.

The council has struggled all year to balance the books, which is a legal requirement for local government. Not only has the council been struggling to implement a robust recovery plan for children's services which had been judged 'inadequate' by OFSTED the previous summer, but it had embarked on a risky organisational change to meet the financial challenge. By February this year this resulted in a £1 million a month salary bill for interim management staff and agency workers.

One of the worst grant settlements in the country for Bucks

To top this, in the days before Christmas, Bucks County Council was awarded one of the worst grant settlements to local government in the country. The revenue support grant which had been expected to be around £32 million came in at £23 million tapering to zero in 2020. The reduction in grant is to be made up by business rates retention amounting to £25 million this year, but by 2020 a negative settlement means £11 million surcharge must be paid back to government to redistribute to less well-off areas. But by 2020 small businesses will be exempt from business rates and in Buckinghamshire only 75 out of 32000 businesses have over 250 employees, so the business rate revenue looks set to dry up completely. Good for business but not for residents and council tax payers.

Increased Council Tax

The council overall budget comprises £57 million from grants and £335 million from council tax. This year the council tax was increased overall by 4%, 2% of which was a general increase and 2% for adult social care.

My group agreed to council tax increases even though this falls disproportionately on those least able to afford it, because if the cuts are too big and unplanned, without adequate preparation and lead in time the whole council risks failure

Overall Expenditure

£15 million are held in reserves

£127 million spent on adult services and health and well-being

£56 million on children services

£34 million on education

£26 million on transport

the rest is in the community services, planning, resources and the leader's portfolio.

Cuts – or Savings

The 2016/17 budget includes at least £7 million of unspecified cuts – or savings.

Other cuts have been specified, but may also be unachievable - for example £4 million of cuts to residential care for people with learning disabilities.

Cuts in respite care will impact heavily on families looking after children and adults with disabilities.

There were also massive cuts to the conneXions service which is responsible for 16+ education and employment with two centres closing in Aylesbury and other services closing elsewhere for example in Buckingham.

Overall there is a very high risk that the budget for 2016-17 will be unachievable, and that a further spending freeze will be required.

£7M last minute extra set aside for contingencies

In February just three days before the council budget decision-making day a £7 million 'rescue' package was negotiated as part of a larger package or sweetener in constituencies where the Conservative MP threatened to vote against the national budget. In Bucks this was not used to restore services but was set aside for unmet savings and anticipated overspend and on the energy from waste project

The Liberal Democrats wanted to see cuts restored that would result in future savings and prioritise children and investment for the future, such as restoring £600,000 to children's centres,

£1,100,000 back into the conneXions service, £100,000 back into school improvement and £190,000 back into public health prevention services.

Changes and developments in the Ivinghoe Division

- Locally we have seen the Children's Centre change from being operated by Barnardos to the new contract holders Action for Children.
- Proposals to downgrade the A4146 to the B440 rumble on and on. I continue at every opportunity to press for a comprehensive action plan to mitigate the pressure of traffic on our fragile road network.
- This included participating in the west coast mainline franchise renewal consultation and making time at the Local Area Forum for all interested parties including Aldbury Parish Council and Herts CC to make their concerns known to the planners at Bucks CC and AVDC.
- Local growth and how to survive without a district-wide local plan is one of the factors putting pressure on county council services and other infrastructure. Several parishes in the Ivinghoe division have put together successful Neighbourhood Plans and Pitstone and Cheddington have held referendums with high participation rates.

My own workload

As well as working on the Neighbourhood Plan for my own village and taking on the chairmanship of the Beacon Villages Community Library I am a member of the Children's Centre advisory board. I usually have several hours a week of correspondence and individual case work, I am a regular member of the monthly Regulation and Audit Committee and the Transport Economy and Environment Select Committee.

This year I have been a member of four major select committee enquiries. These have been into flood prevention and management, the prevention of child sexual exploitation, the social integration of adults with a learning disability, and the return on investment in the economic development of the county.

I have additional duties as leader of the official opposition, such as attendance at conferences, pay review meetings, and the selection panel for senior members of staff including the new chief executive for the County Council.



Courage
Friendship
Respect

Love Values
Koinonia
Responsibility

Values Day at Dagnall Church of England School



On Thursday 14th April, the children of Dagnall Church of England School were busy celebrating their very first Values Morning. The building was buzzing with activity as the children, with their wonderfully supportive parents, explored the six Christian Values: Love, Friendship, Responsibility, Respect, Courage and Koinonia. The varied and creative

activities ranged from making bracelets to icing biscuits and culminated in the celebration of their value for this term Koinonia.

What is this I hear you ask? If you ask a child at Dagnall they will confidently tell you that it is a Greek word that is all about communicating and working together as a team. It is a difficult word to understand when you're only 5 years old but one that really encapsulates the strength and support of the local community. Therefore, to begin to develop the idea with the children, they invited the Dagnall Over 60's and their faithful Rev. Coralie to join them for tea and delicious cheese scones (made by the children of course!) The children showed great courage in welcoming our guests from the community, asking questions and listening to fascinating stories of others.



The morning was a fantastic success due to the continued passion and hardwork of our staff. Not to mention the love, courage and respect of our children at Dagnall Church of England School.

The comments from parents were overwhelmingly positive:

"The values morning was brilliant. We both found it very worthwhile."

"The Values morning was a lovely way to spend time with the children and to learn about the schools values."

Make your house a home with blinds and awnings from

**VANSAR
BLINDS**



www.vansarblinds.co.uk



- Free No Obligation Measuring And Quotations
- All Blinds Made To Measure
- Choose In The Comfort Of Your Own Home Or Workplace
- Family Run Business
- Large Range Of Quality, Affordable Fabrics And Colours To Choose From



Call: 01525 220477 or 01582 699565 E: sales@vansarblinds.co.uk

Financially Prudent (IFA) Ltd

23 The Green, Edlesborough, LU6 2JF

Your local IFA for impartial Personal or Corporate advice on:

- Mortgages
- Pensions & Annuities
- Insurance
- Savings & Investments

Call Paul Pearce on 01525 220480 or email paul@finpru.com for a no obligation initial discussion



Financially Prudent (IFA) Ltd is authorised and regulated by the Financial Conduct Authority

J.G.S. Metalwork & Son

**Specialists in Gates
& Gate Automation**

Access Control • Security Grilles • Railings
Balconies • Stairwells

www.jgsmetalwork.co.uk

Call in to discuss your ideas

High Street, Edlesborough LU6 2HS

Tel: 01525 220360 Fax: 01525 222786

Spinney Landscapes
& Gardening Services

All Aspects of Grounds Maintenance

Weed Control • Driveways & Patios
Lawn Care & Scarifying • Fencing
Turving • Tree Work
Snow Cleaning & Gritting

Tel: 01582 872084 Mob: 07876 500292

Email: chambo.1628@btinternet.com

Dagnall Church of England School



A Buckinghamshire co-educational school

For 4-7 year olds



Dagnall Church of England School offers small classes, an exciting curriculum, excellent care and good links with the local community



Ofsted 2011
"Pupils are confident,
very happy at school
and curious to learn."



Tel: 01442 842473
www.dagnall.bucks.sch.uk



E-mail:
office@dagnall.bucks.sch.uk



David Brown

Window Cleaning

Quality Reliable Service.

Regular, Occasional or
Single Visits.

Friendly Free Estimates.

Facias, Guttering & Conservatories.

External Cleaning & Maintenance.

Fully Insured.

Phone 01582 472113

Mobile 07534 837073

D & E HINES

High-Class Butchers

Quality Beef, Pork & Lamb

Grade A Poultry

BBQ & Sausage Speciality

Renowned for 'Bunkers Sausages'

Telephone: 01525 220413

98 High Street, Eaton Bray



GENERALMECHANICALSERVICESLTD

VEHICLE SERVICING AND REPAIRS



**MOTs • MOT REPAIRS • SERVICING
DIAGNOSTICS • TRACKING • AIR CONDITIONING
TYRES • CAMBELTS • COLLECTION & DELIVERY
WELDING & FABRICATION • BATTERIES**

All vehicles - all mechanical work!

1 HONEYWICK LANE, EATON BRAY, LU6 2BJ

reception@general-mechanical-services.co.uk

www.general-mechanical-services.co.uk



01525 222876



Place of trust for motorists.



Protecting what's important

MJ Security Systems Ltd

MJ Security Systems

Contact Us For More Information

Unit 4, Arianne Business Centre,
Blackburn Road,
Townsend Industrial Estate,
Houghton Regis,
Bedfordshire,
LU5 5DZ

Please call for a free quotation

T: 0800 0856126

E: info@mjsecurity.co.uk

W: www.mjsecurity.co.uk



We also specialise in:

- IP Cameras
- Intruder Alarms
- Access Control
- CCTV & Monitoring
- Door Entry
- Covert Cameras
- Security Lighting



FROM ONLY
£439.95+VAT
Products and
Installation



Kit includes:

1 x Wireless Door Contact, 2 x Wireless
P.I.R., 1 x Wireless Sounder, 2 x Remote Set
and Unset Fobs.

Stylish • Wireless • Secure

M . P . S

Maintenance & Property Services

- KITCHENS AND BATHROOMS
- PAINTING AND DECORATING
- PROPERTY RENOVATIONS
- PLASTERBOARDING
- FENCING

FREE ESTIMATES

NO CALL OUT CHARGE

NO JOB TO SMALL

LOCAL

Contact:- Julian

07958 306301

E-mail – mps@mustoe.co.uk

www.mustoe.co.uk

Leighton Aerials

Established 1970

For all your aerial
and satellite needs
call Colin on

01525 374742



Edlesborough School & Pre-School



Pupils' behaviour is outstanding...

The environment for learning is exciting and stimulating...

A real strength of the school is pupils' attitude to their learning .

Ofsted 2013

For more information about our School, Pre-School and Before and After School facilities, visit our website at www.edlesborough.bucks.sch.uk

Please contact the school on 01525 220431 to arrange a visit.

S M Reilly & Son Ltd

General Builders & Contractors



Turning Your House into
a Home Since 1987

All aspects of the building trade undertaken

- *Extensions*Hard Landscaping*
- *Windows, Doors & Conservatories*
- *Fitting of Aluminium Bi-fold Doors*
- *Kitchen & Bathrooms*Drives*
- *Loft Conversions*

01525 221740 07970 637511



JAMES FALCON-CROSS

LANDSCAPING AND OUTDOOR LIVING DESIGN

**ALL ASPECTS OF LANDSCAPING
UNDERTAKEN INCLUDING
FENCING, TURFING AND PATIOS
TIMBER STRUCTURES
DESIGNED AND BUILT**

VEGETABLE AND HERB GARDENS

01442 843258 / 07769 901325

ONECROSSFALCON@GMAIL.COM

eww

E W Wallace & Co
Chartered Accountants
Tax Consultants
Business Advisors

Small business specialists serving
Beds, Bucks & Herts

- Annual accounts
- Tax returns
- Self-employed
- Limited companies
- Small business specialist
- Sage Accounts expertise
- Prompt, personal service
- Value-for-money fees
- Free initial consultation

01525 220826

www.ewwallace.co.uk

Eaton Bray Village Hall



- ❖ Equipped to support theatrical productions and film shows
- ❖ Large car park
- ❖ Large Kitchen with a six ring cooker, large refrigerator, hot trolley, crockery etc.
- ❖ 3 separate areas to hire to meet your needs and budget
- ❖ For more information and brochure please ring Norman on 07975 797202

- ❖ Superb venue for weddings
- ❖ Fantastic place for parties and dances
- ❖ A must for children's parties, can fit the bouncy castle inside if weather dictates!!!
- ❖ Keep fit groups
- ❖ Ideal for Club meetings or functions



WAGGING

wonderful dog grooming

Here to take care of your mucky pup!

Your local dog grooming service in Eaton Bray

1-2-1 care for your dog

NO cages!

07580 343396

www.waggingwonderful.co.uk

info@waggingwonderful.co.uk

James B Chadburn FBHI

Fine Antique clocks & Barometers

Specialist in repairs & restorations.

Valuations & clock finding service.

Advice & assistance on formation & disposal of private clock collections.

Quality clocks/barometers Bought & sold.



Telephone 01525 221165

Mobile 07790 000629

E-mail: info@jameschadburn.com

NG AUTOS



MAKING YOU AND YOUR CAR HAPPY

CAM BELTS • MOT'S • MOT REPAIRS • HEAD GASKETS
AIR CONDITIONING • RECOVERY/BREAKDOWN
DIAGNOSTICS SERVICING • BRAKES • SUSPENSION
CLUTCHES • GEARBOXES • TYRES • WHEEL BALANCING
WHEEL ALIGNMENT COLLECTION & DELIVERY

CALL NICK OR GARY

01525 220850 OR 07972 198615

**SPARROW HALL FARM, LEIGHTON ROAD,
EDLESBOROUGH LU6 2ES**



Reception



Service Bays



MOT Station

D.A. Windows Doors & Conservatories

23 Church Lane, Eaton Bray, LU6 2 DJ

Tel: 01525 221051 Mobile: 07807 798387
email: mimcavinder@hotmail.com

AUTHORISED
SWISH INSTALLER
WITH OVER 20
YEARS
EXPERIENCE

Installation of PVCu windows, doors and conservatories
Replacement glass units and window maintenance

QUALITY PRODUCTS - QUALITY WORKMANSHIP -
REASONABLE PRICES



General building
maintenance work
also undertaken
including:
Facades and Soffits
Gutters
Fencing

Accredited Member of the
Incorporation of Plastic
Window Fabricators and
Installers Limited



The Gentleman Gardener

Let your local RHS qualified gardener make your garden beautiful, from simple garden maintenance to total redesign of your garden.

Please call Barry on
01525-222451 or
07541196384

to pop round for a free chat.



C H BUILDERS

cwhawkes@tiscali.co.uk

Tel: 07989 357231

Local builder with over 35 years experience in the trade, specialising in:

- Kitchen fitting and alterations
- Extensions
- Loft conversions
- Renovations

Recommendations available

Please contact Chris to discuss any requirements for a free quotation

McTimoney CHIROPRACTIC



Margie Craib BSc BHSI DC AMC MMCA
Human and Animal Treatments

Ashridge Farm, Ringshall, Berkhamsted, Herts HP4 1ND
Telephone: (01442) 842729

General Chiropractic Council Registration No. 293

CHIMNEY SWEEP

Local & Est. Brush n Vac
Friendly, Clean and Efficient

Call **KEVIN HING** on

Tel: 01525 371592

Mob: 07940 528897

www.khing.co.uk

Member of NACS

OPEN GARDENS 2016

Since 2006, one of the social highlights of the year in our villages has been our Open Gardens event. We have had some wonderful afternoons enjoying gardens that have been opened by willing gardeners; both gardeners and visitors value the experience in equal measure.

**Please would you
open your garden?**

Contact

Kay - 222849

Gordon - 220136

This year's event will be on 24th July so people who have previously opened their gardens in mid-June may wish to show off an entirely fresh colour scheme and others who have not opened their gardens before may feel their garden is more beautiful in July. This is a really special event in our villages' calendar. We already have a few offers of gardens but we do need some more.

Now is the time to offer to open your garden. It can be large or small – all gardens have something to offer visitors and past experience suggests that those who open their gardens are delighted by the positive feedback they receive. Do please think about it, then get in touch with either Kay Griffiths (222849) or Gordon Gray (220136).



Dagnall Church Sunday School

meets between 10.30am and 11.30am on Sunday mornings.

Our team helps children to learn about God and Jesus through bible stories, games, puzzles, drama, craft activities, songs and prayer. We cater for children aged between 5 and 12. Parents are welcome but do not need to stay.

For more information, please call:
Liz Coates 01442 842550
Or Stephanie Ralphs 01442 842402



The Salvation Army, Booth Place, Eaton Bray Weekly Activities



Sunday

Footprints (Sunday School)	9.45-10.45am
Morning Worship	11am
Messy Church	3-5pm
<i>(Last Sunday of the month)</i>	
Songs of Praise	4pm
<i>(3rd Sunday of the month from May to Dec)</i>	

Tuesday

Coffee Morning	
<i>(Alternate weeks)</i>	
	10-11.30am
Music practices (all welcome)	7.30-9pm

Wednesday

Home League	2.30-3.30pm
<i>(Ladies Mtg but all welcome)</i>	
Champions Challenge Club <i>(term time)</i>	
<i>(Ages 5-10 years)</i>	
	5.45-6.45pm

Thursday

Parent and Toddler Group	
<i>(Term time)</i>	
	9.30-11.30am
Sewing & Craft Bees	
<i>(2nd Thursday of month)</i>	
	7.45 pm
Ladies Fellowship	
<i>(Last week of month)</i>	
	7.45pm

*For further details please call Envoy Hilary Chadwick. T:01525 222087 / 07932 057490
E: hilary.chadwick@salvationarmy.org.uk
W: www.salvationarmy.org.uk/eaton-bray*

Rump of Lamb, Pesto Mash, Ratatouille, Rosemary Jus



After the sweet treats of my last two recipes, here's a great main course dish. The beauty with this recipe, created by St Albans' Sopwell House's brasserie head chef, Dan Woosey, is that you can use the different components with different meals - the pesto mash is a winner, the simplified ratatouille goes with any other meat or fish. And you'll be amazed what adding a little rosemary does to humble gravy granules. This is also perfect for a dinner party. The whole dish can be prepared in advance, leaving just the sealed lamb to oven roast and the mash, ratatouille and jus to warm up.

Plump lamb rump works really well here but you can replace it with leg steak or cutlets if you prefer.

Serves 4

4 x 170g rumps of lamb
Sprig of rosemary
Sprig of thyme
1 garlic clove
1kg King Edward potatoes, peeled and cut
100ml green pesto
Knob of butter
50ml double cream
1 red pepper, diced small
1 yellow pepper, diced small
1 aubergine, diced small
1 courgette, diced small
1 tbsp tomato puree
Sprig of thyme
50ml white wine
100ml vegetable stock
Either store-bought jus or gravy granules
1 sprig of rosemary, picked and snipped

Method

Pre-heat the oven to 180C/ Gas Mark 4
First, marinade the rumps with snipped thyme, rosemary and chopped garlic.

In a hot frying pan, add a little oil and carefully seal the lamb on all sides. Place the steaks on a baking tray, ready to cook.

For the mash, cook the potato chunks in salted boiling water, taking care not to overcook them as this will make the

mash watery. After draining the potatoes, place them back in the pan and put them on a very low heat, stirring to remove the moisture.

Add the butter and cream to the potatoes. Mash them, season them and finish by mixing in the pesto bit by bit, until the right flavour and consistency is achieved.

For the ratatouille, place a pan on a medium heat, add a little oil then cook the diced veg until "just soft" (4 or 5 minutes). Season, then add the tomato puree. Cook while stirring for 2 minutes on a low heat, then add the white wine and reduce until nearly evaporated. Add the vegetable stock a little at a time until the vegetables are beautifully coated with the tomato sauce.

For the gravy/jus slowly heat up the gravy and add the snipped rosemary, simmer for a few minutes and it's ready.

Cook the lamb in the oven for 12-14 minutes for a nice medium rare. Leave to rest at least 6 minutes before cutting and serving.

Assemble the mash and ratatouille on the plate, carve each steak into 2 or 3 even pieces and place on the mash, then drizzle the rosemary jus over for a lovely dinner party dish.

Hear wonderful recipes on Nick Coffey's Weekend Kitchen every Sunday morning on BBC Three Counties radio at 11am. You can also join Nick every weekday afternoon at midday for brilliant local guests with great stories to tell and all the music you want for your early afternoon.



95.5 FM | 103.8 FM | 104.5 FM | DAB | bbc.co.uk/threecounties

EXHUMED BONES LAID TO REST

"On Ascension Day, Thursday 5th May, the bones which had been exhumed during the archaeological excavations at St Mary's prior to building the extension, were respectfully laid to rest once more in the churchyard. About a dozen people were there on what was a very cheerful and sunny morning, including members of St Mary's congregation and Eaton Bray villagers who were passing by having cast their votes in the polling station!

Revd Coralie McCluskey read a moving service of committal and at one point had to compete with the loud singing of a robin in a nearby tree. The committal rite contains the words 'earth to earth, ashes to ashes, dust to dust; in sure and certain hope of the Resurrection to eternal life, through our Lord Jesus Christ'. Coralie pointed out that the people whose bones we were reburialing, having lived in less questioning times, would have had a very strong faith and belief in eternal life. Their friends and loved ones would have taken great comfort from those words.

The full archaeological report on the excavations has not yet been received but without doubt, it will be very interesting and give us more information about the history of the church and the village. It will be made available for all to read and there will be more information in Focus in the coming months.

St Mary's extension will provide a much needed accessible toilet. The exterior is now complete and the fitting out of the interior is currently taking place and by the time you read these lines, may also be finished and the facilities in use!"

✍Catherine Hayden





Stay & Play Toddler Group

Musical Monkeys

Eaton Bray Village Hall
10-11.30am on Fridays

£4.50 for one adult and child
£1 for extra children/adults
0-6 months free

**Messy
CHURCH**

Fun, food, crafts, games and much more
FREE OF CHARGE

**Last Sunday of the month
3-5pm**
at The Salvation Army
Booth Place, Eaton Bray

For more details please contact:
Hilary Chadwick (Envoy) 07932 057490
hilary.chadwick@salvationarmy.org.uk

Looking to visit Canada...

For help with creating the best itinerary for you please call or email us

- Canada specialist since 2001
- Friendly, honest advice from an independent travel agency
- Specialists in tailor-making holidays to destinations worldwide
- Extensive experience to arrange every detail
- Using fully bonded tour operators
- No booking fees



Travel Impressions

01442 890265

enquiries@travelimpressions.co.uk
www.travelimpressions.co.uk

Suite 4, George House, 64 High Street, Tring, Herts. HP23 4AF

* * * Michelin Starred * * *

Bowlers certainly enjoy their bowling, but as much talk can be about the quality of the meal provided by a Club after a match.

We could name a few Clubs who are miserly and who leave all the catering to a few ladies. This is not the case at **Cheddington Bowls Club**, where the men muck in. Rodney's roast pork and Richard's herbed chicken set a standard other Club's cannot match. Fantastic food at £2 a head – and that invariably includes a tasty pud!

Bowls is a great value sport: a new bowler can join **Cheddington Bowls Club** for less than the equivalent of a £1 a week. **Why not:**

Give Bowls A Go on any Tuesday (2pm) and Friday (6pm): May to September.

or **Come & Watch on a sunny afternoon:** **June's** home friendlies start at 2.30 pm

Thurs 2nd	v	Wing	Sat 18th	v	Bradwell
Sun 5th	v	Wendover	Sun 26th	v	Potten End
Sun12th	v	Dunstable	Thurs 30th	v	Redbourn

July's home friendlies start at 2.30 pm

Sun 3rd	v	Wingrave	Sat 30th	v	Newport Pagnell
Sun 10th	v	Winslow	Sun 31st	v	Shipston on Stour
Sun 17th	v	Bletchley			

Free car parking at the Recreation Ground, Cheddington, LU7 9AA.

With love from Jack: 01525 220644



Wednesday Club Northall Update

We have been busy celebrating our **THIRTIETH ANNIVERSARY** this year. Our Club was officially opened in February 1986 and is still going

from strength to strength. We have had Anniversary Lunches, Music Afternoons, Flower Arranging demonstrations, Coffee Morning, photograph albums, and of course celebrated The Queen's 90th Birthday!

We also have more music, afternoon teas, a coach day trip, and some other activities planned, together with hosting our Afternoon Tea with Pimms at the end of July, joined by all our volunteers who help out at the club.

Without our loyal volunteers, the club would not run, so a big **THANK YOU** to all our current volunteers and everyone who has helped us over the past 30 years. If you would like to join us please contact Anna on 07854 230243.

London Luton Airport

With an increase in aircraft in the area and in particular when the wind is from the East, we are getting some aircraft flying directly over the village to join the flight path into the airport. If you are disturbed by the traffic flying over the village, there is a complaints hotline number: 01582395382. This is an airport number where you can register your concerns. It is important to do this if we are to reduce these disturbances over our village.

If you need to complain about Heathrow flight noise the number is 0800 344 844. Email: noise_complaints@heathrow.com



Front Row Theatre Group

Front Row are pleased to announce their next production, a comedy by David McGillivray and Walter Zerlin Jr. entitled "The Farndale Avenue Housing Estate Townswomen's Guild Dramatic Society's Production of "Macbeth", which will be performed at the Eaton Bray Village Hall on Thursday – Saturday 20th -22nd October 2016 at 7.30 pm.

The Farndale Avenue Housing Estate Townswomen's Guild Dramatic Society ladies mount yet another assault on the classics with a startlingly original production of *Macbeth* staged to get them to the Welwyn Garden City Finals. Under the carefully mascara'd eye of adjudicator George Peach, all events conspire hilariously against them.

Book the dates in your diary now, for more great evenings of local live theatre.
Box office opens 1st September



All Saints' Church, Dagnall Services in June 2016

Sun. 5th June	9.00 am	Eucharist
	10.30 am	Morning Service
Sun. 12th June	10.30 am	Morning Service
Sun. 19th June	10.30 am	Family Communion
Sun. 26th June	10.30 am	Family Service
Sun. 3rd July	9.00 am	Eucharist
	10.30 am	Morning Service



Sunday School meets each Sunday at 10.30 am except when there is a Family Service.

Pitstone Green Museum Open Days

Sunday 12th June
 Sunday 10th July
 Sunday 14th August
 Summer Bank Holiday - 29th August
 Sunday 11th September
 Sunday 9th October
 11am -5pm
 Adults £6.00. Children £2.00
 Vicarage Road, Pitstone,
 Bucks, LU7 9EY

Ford End Watermill

Sunday 19th June
 Sunday 10th July
 Sunday 7th August
 29th August Bank Holiday Monday
 Sunday 11th September
 16th October
 Station Rd, Ivinghoe, Bucks LU7 9EA
 Open between 2pm and 5pm
 Adults - £3.00, Children (Age 5-15) - £1

NORTHALL BAPTIST CHAPEL

Chapel Lane, Northall

(just beyond the 30 speed limit signs on
the road towards Leighton Buzzard)

Everyone is welcome to our Sunday
worship each week between 11am and
12.30pm including tea/coffee and time to
talk together.

For more information contact:

John Hazell 01525 218142

Email northallchapel@btinternet.com

There has been a Baptist Chapel in Northall
for more than 200 years. Today we continue
to seek to worship God, serve him in our
daily lives and support and encourage one
another in the difficult and the joyful times.

St Mary's 100 Club

The May draw for St Mary's 100 Club was made by some of those who attended this month's coffee morning in the church.

The lucky prize-winners are:

May 2016

1st Prize	No. 82	John Plater	£59.00
2nd Prize	No. 33	Patricia Quartermaine	£35.40
3rd Prize	No. 54	Christopher Banks	£23.60

Every now and then someone notices that some people in the 100 Club seem to be lucky in that they've won a prize more than once. Yes, luck does come into it, but I've been over the list of previous winners and it would seem there's a link between the number of entries that a person has bought and the chances of them winning.

So whether you'd like to join the fun (for just £2 per month) or buy additional entries, then please contact me (Gary Freeman) for an application form – gary@old-wrestlers.demon.co.uk

Good Luck!!



Above: Bluebells at Hoo Wood near Dagnall by John Hockey

TACKLING A MAMMOTH TOOTHACHE

Close-up footage of elephant
tooth operation released by ZSL
Whipsnade Zoo



Open up and say ah! An elephant at ZSL Whipsnade Zoo was paid a visit from the dentist to fix a mammoth toothache, and keepers captured the whole procedure on camera.



Keepers noticed that 33-year-old Lucha, a female Asian elephant, was off her food, and upon investigation from the vets were able to get to the root of the problem; a wobbly tooth that had moved and become infected.

Vets called upon the services of West End dental surgeon Dr. Peter Kertesz, a specialist in zoo dentistry, to help the team extract the massive molar.

Head Vet at the Zoological Society of London,

Nic Masters said: “While most people dread the idea of a visit to the dentist, for Lucha the elephant it was a relaxed experience, due to the regular training and close relationship she has with our keepers.

“The keepers quickly noticed when Lucha was off her food, and as soon as we identified the problem tooth, we called upon expert zoo dentist Dr Peter Kertesz to help out.

“When anaesthetizing an animal, we can’t predict what side they’ll lie down on, but thanks to training, Lucha was able to lay down on the right side, ensuring we could access her gum easily, and quickly remove the tooth to get her back on her feet as soon as possible.”

Lucha and the herd of ten Asian elephants at ZSL Whipsnade Zoo are part of the European Endangered Species Programme (EEP). Asian elephants are classified as Endangered by the IUCN Red List of Endangered Species, and ZSL has been working in Salakpra Wildlife Sanctuary in western Thailand to tackle the human-elephant conflict that threatens lives and livelihoods and protect the forest ecosystem.

Visitors can see ZSL Whipsnade Zoo’s herd of Asian elephants go for their daily 2.5 mile walk around the 600-acre Zoo by booking online at www.zsl.org




BRAYSCOPE

Experts in commercial & domestic horticulture

For all your **Commercial**
and **Domestic** landscape
requirements

Professional and **Qualified**
landscape maintenance and
Construction company



Contact Kevin on

01525 220948 07949 601630

brayscape@aol.com

14 SCHOOL LANE, EATON BRAY BEDFORDSHIRE, LU6 2DT



STOCKISTS FOR



GUTTER BRUSH

- All aspects of Pressure Washing - Roof Cleaning / Coating specialists

- Safe cleaning system using rope access
- Roofs cleaned using 'controlled' pressure washing
- All water recycled

For before and after photos please visit:

<http://www.facebook.com/greatoutdoorsandin>



0800 298 5883

www.greatoutdoorsandin.co.uk



FREE QUOTATIONS



Over 25 years experience

Friendly and Reliable Service

Fully insured

All aspects of building work undertaken:

- Kitchens & Bathrooms
- Refurbishments
- Garage Conversions & Extensions
- Plastering, Painting & Decorating
- Wall and Floor Tiling
- Patios and Fencing
- Fascias & Soffits
- General Maintenance

Mobile: 07931 308306 Tel: 01582 475428

Email: ajrbuildingservices@hotmail.com

A McClelland Pest Control



FOR FAST RESPONSE CALL:

Mobile 0777 494 8415

Office 01582 872158

specialists in: wasps - bees - ants
hornets - fleas - cockroaches - bed bugs - pigeons - magpies - rabbits
rats - mice - moles - squirrels
foxes - mink - feral cats



UNMARKED VEHICLES

For further information please call or email amcclellandpestcontrol33@gmail.com



family photography



hobby photography



product photography




locations & premises

www.redbrickphotography.uk

Eaton Bray's New Photographer!

07852 200 139

THE PERFECT PLACE FOR ANY OCCASION....

 *ACCOMMODATION - OFFERING A VARIETY OF
ROOMS/SUITES*

 *BREAKFAST, LUNCH OR DINNER
IN OUR HENRY'S RESTAURANT*

 *SUNDAY LUNCH*

 *MEETINGS*

 *WEDDING PACKAGES*

 *PRIVATE FUNCTIONS*

 *FUNERAL RECEPTIONS*

 *CHRISTMAS & NEW YEAR PARTIES*



FOR MORE INFORMATION ON WHAT WE OFFER,
PLEASE CALL US ON

01582 662201

OR VISIT OUR WEBSITE.

Leighton Plumbing & Heating

Oil fired boilers service, repairs & installations



All other aspects of plumbing & heating undertaken

Oftec registered & insured

01525 385250
07774 567472

11 Woodman Close
Leighton Buzzard
Beds
LU7 3NU

leighton-plumbing@ntlworld.com



Do you need a Helping Hand?

Our **local** care team has been providing award winning quality homecare since 1989.

We offer a homecare service **from 30 minutes per week to full-time Live-in Care**, which enables you or your loved one to remain at home with compassion and dignity.

To find out how we can help, call: **01296 752 632** or visit: www.helpinghands.co.uk



Stoten Gillam
chartered accountants
chartered tax advisers

99 High Street South
Dunstable
LU6 3SF
Tel: (01582) 608601
www.stotengillam.co.uk

ICAEW
CHARTERED
ACCOUNTANTS


CHARTERED
TAX ADVISERS

"Practical
Solutions for
Growing
Businesses"



MOBILE MASSAGE THERAPY

20% OFF
FIRST 2 MESSAGES
Vouchers are available

Rejuvenate and revitalise with a massage. Rest your mind, relax your body, relieve tensions, restore calm and balance with some well deserved respite from your busy life and daily stresses.

Sarah Tees, ITEC, CThA
07792 542760
01525 220323
esprittherapy.co.uk



esprit therapy



plumbing & gas engineers



Page

maintenance ltd

www.plumbingandgas.org.uk

Gas boiler, fire & cooker, servicing, installation & repairs cylinders etc.

Heating system problems *inc.* power-flushing

Dripping taps & internal plumbing issues

Also solar thermal repairs & servicing

Inc. LPG and park homes

01582 674829

mark@plumbingandgas.org.uk






FREE INITIAL CONSULTATION

OUR SERVICES INCLUDE:

Accounts • Bookkeeping Services • Cloud Based Bookkeeping • Tax Returns
Management Accounting and Reporting • CIS • Payroll Bureau • VAT Returns
Corporation Tax • Company Secretarial • Specialist Business and Tax Advice


Specialising in New Business Start-Ups

- Fixed Fee Quotes
- Unlimited Email and Telephone Support
- Back Office Solution
(dealing with your back office accounts function enabling you to focus on the rest of your business)

Please contact us for more information...

Gable End, Sparrow Hall Business Park
Leighton Road, Edlesborough. LU6 2ES
Tel: 01525 229 539 • Fax: 01525 220 180
enquiries@rileyaccounts.co.uk
www.rileyaccounts.co.uk

@RileyAccounts • Also on



Call us on...
01525 229 539

"YOUR LOCAL ACCOUNTANT"

We are a nurse-led home care provider committed to delivering the very highest standards of care.

Support from our dedicated team gives you or your loved one the peace of mind and confidence to be able to continue living at home.

Family-owned and managed, we are independent and do not belong to a national chain or franchise. We are registered with the CQC, number 1-1499072841.

To talk to us about your requirements please call Helen Yates RGN on 07920887414 or 01442 843064 or email helen.yates@yourownhomecare.co.uk



your own
home care
putting the nursing back into care



www.yourownhomecare.co.uk



Edlesborough Dental Practice



***Get the Beautiful Smile You Deserve!
Book your FREE Smile Assessment now.***

Edlesborough Dental Practice

Telephone: 01525 223175

11 Cow lane, Edlesborough, LU6 2HT

www.flossandsmile.co.uk

**General Family Dentistry * Crowns * Bridges * Dentures
Smile Makeovers * Tooth Whitening * Tooth straightening Implants
* Hygienist * Sedation * 0% Finance available**



Some comments from our December 2015 Ofsted report:

Children learn good manners and know how to treat each other with respect.

Staff are consistently kind and caring and this supports children to develop confidence and resilience.

Teaching is consistently good and children's safety is given the highest priority.

We are a committee run playgroup operating five mornings a week 9:15 – 12:15 for children aged 2 to school age.

If you would like to find out if your child would be happy here, please phone our Playgroup Leader, Ann Tobin on 07816 358 342.

www.dagnallunderfives.co.uk

DJH and Co Accountants Limited

Specialising in helping small
businesses and self-employed
people.

Financial Accounting, Bookkeeping,
Payroll and Tax Assistance services.
Competitive rates. Fully Licensed and insured.

01525 792288/07875560090
djhandcoaccountants@yahoo.com
www.djhandcoaccountants.co.uk

CHIROPODY HOME VISITING PRACTICE

Julia Reading, BSc(Hons)

17 years experience

- * Corns * Hard skin * Verrucae
- * Thickened/Ingrowing nails
- * Nail cutting * Diabetic feet

Please telephone: 0774 647 2781

for more information or to make
an appointment

 The COLLEGE
of PODIATRY

 hpcp
registered
www.hpcp-uk.org

Coffee Tavern



Large Hall £6.00 per hour

Committee Room £3.50 per hour

**Large Hall &
Committee Room £8.00 per hour**

Bookings 01525 220891

Stairlift and access ramp available


**Oven
Wizards™**
We clean your oven...so you don't have to

Call today to have your oven, hob, extractor or
Aga professionally cleaned

Contact Paul Joyce: Tel 01525 792761
Mob 07808 580718
pauljoyce@ovenwizards.com

Wag & Stroll

*Dog Walking &
pet caring service*

*One off or regular
walks in familiar
surroundings*

*Cat sitting also available
Please call Sue on*

07758 647488

email: wagandstroll@gmail.com




RS
Electrical
Services
www.rselectricalservices.com

 NICEIC
DOMESTIC
INSTALLER

**FULLY QUALIFIED
ELECTRICAL ENGINEER**
CPS Registered through NICEIC Scheme

 City &
Guilds
Qualified

Competitive prices and quality service

Available for all your domestic and
commercial electrical requirements

No job too small

Call Russell Sears:

**07578 008567
01525 220008**

17 Good Intent, Edlesborough

Put Your Best Foot Forward



It doesn't matter how old you are - everyone benefits from good foot

care.

Cracked heels are caused by dry skin, prolonged standing or mal-alignment of the foot or walking pattern. Use a pumice stone to reduce the hard skin and apply a suitable foot cream. Avoid wearing thin-soled or open-backed shoes and choose a good shock absorbing sole.

Corns are thickening of the skin usually on top of the toe, the sole or between the toes caused by pressure of the shoe. These may be swollen and painful to direct pressure. Often caused by ill-fitting shoes, you should avoid tight shoes and hosiery. Use a pumice stone to remove excess skin and moisturise with a good foot cream. Don't use corn plasters as these can destroy healthy skin.

Sweaty and smelly feet can be caused by hormonal changes such as hyperhidrosis (excessive sweating) and being on your feet all day. Wear cotton socks and rotate your shoe usage. Wash and dry your feet carefully every day. Surgical spirit or witch hazel between the toes may help.

Blisters are painful, fluid-filled lesions, often caused by friction and pressure from ill-fitting footwear and socks and excessive moisture between the foot and the sock. To help prevent them:

- Wear comfortable, good-fitting footwear.
- Choose moisture wicking socks that are the right size - specialist dual layer socks can be useful for walkers and runners - and change your socks daily.
- Keep your toenails trim and regularly check your feet for signs of rubbing. If you have a blister, do not pop it - cover with a breathable plaster.

For further information on foot care contact your local HCPC registered Podiatrist.



**Tips by St Judes Clinic,
26 Lake Street
Leighton Buzzard
LU7 1RX**

☎ 01525 377751

🌐 www.stjudesclinic.com

enquiries@stjudesclinic.com

**St Giles Summer Fayre
Totterhoe Recreation Ground
Saturday 11 June**

12:00 noon until 3pm

**A wonderful event for the whole community
with entertainment and fun for all the family**

**In celebration of
HM Queen Elizabeth II
90th Birthday**

**Classic cars on display
Challney Concert Band playing**



It's A 10 From Len AN AUDIENCE WITH IAN WAITE AND NATALIE LOWE FRIDAY 10 JUNE 8PM Tickets: £26/£24

For a night that will dazzle and wow you, make sure to be a part of An Audience with Ian Waite and Natalie Lowe as they bring A Touch of Class to the Grove Theatre, Dunstable on Friday 10 June at 8pm.

The pro-pairing are best known for their high intensity performances on the hit BBC show Strictly Come Dancing, and have become family favourites for pushing the boundaries of dance. A Touch of Class will continue to invite you into the world of this celebrity couple, with fun-filled entertainment and a close up history of all things related to their life.

Expect a dance showcase spectacular in An Audience with Ian Waite and Natalie Lowe; a mixture of Ballroom and Latin performed to transport you to a place of wonderful moments.

Set to be a night you will remember forever, tickets can be purchased at £26 or £24 with discounts for concessions and wheelchair users.

For more information or to book, call the Box Office on 01582 60 20 80 or visit the website at www.grovetheatre.co.uk.



IT'S ALWAYS A SCORCHER WITH THE JOHNNY CASH ROADSHOW FRIDAY 23 SEPTEMBER 7.30PM

The spirit of the Man in Black is alive and 'kicking like a mule'!

The Johnny Cash Roadshow is an outstanding celebration of the iconic legend endorsed by the Carter/Cash family.

This is gold standard, fire-cracking entertainment from the first note, delivering an inspired set of cherished numbers with impeccable rhythmic pace. A dynamic performance from an unparalleled group of highly talented musicians and a guaranteed treat for country music lovers and die hard Cash fans alike.

You're sure to be singing You Are My Sunshine!

For more information or to book, call the Box Office on 01582 60 20 80 or visit the website at www.grovetheatre.co.uk.



Music



Date: June – July 2016

Box Office: 01582 60 20 80 (opt 7)

Book Online: www.grovetheatre.co.uk

Movie hits from film to stage, a tribute to the journey of a legendary band and rock 'n' roll galore; what will be your music concert of choice at the **Grove Theatre, Dunstable** this summer?



If you're a fan of the **Blues Brothers** movies, there's a brand new **Jailbreak Tour!** by the **Chicago Blues Brothers** hitting the **Grove Theatre** stage on **Saturday 11 June** at **7.30pm**. A night of the best blues, Motown, soul and comedy from both the films, including the tunes that made them; *Everybody Needs Somebody*, *Soul Man* and *Shake a Tail Feather*. Complete with Pork Pie Hats and sunglasses, this new stage production tributes the legendary Brothers, including a 9 piece live band and featuring over 40 classics from **James Brown**, **Aretha Franklin**, **Ray Charles** and many more!

Following huge demand after their performance at the **Grove Theatre** last year, **Let's Hang On** returns with an award-winning celebration of the legendary **Frankie Valli & The Four Seasons** on **Saturday 18 June** at **7.30pm**. Prepare for an electric atmosphere of classic hits including *Can't Take My Eyes Off Of You*, *December 1963 (Oh What A Night!)*, *Walk Like A Man*, *Working My Way Back To You* and *Big Girls Don't Cry* to name but a few.

If being a hard rocker or an 80s stalwart is more your style then grab your place amongst the crowd for **Never 42**, an established forerunner tribute band to **Level 42**. On **Saturday 9 July** at **7.30pm**, 7 band members on guitar, bass, keyboard, sax, trumpet, vocals and drums, will give you an unforgettable, high impact night of funk driven tunes, including hits such as *Lessons in Love*, *Something About You* and *The Sun Goes Down*.

The choice is yours. Ticket prices vary; for more information or to book, call the Box Office on **01582 60 20 80** or visit the website at **www.grovetheatre.co.uk**.

Dagnall Weather Station (AONB)

Weather Conditions for April 2016



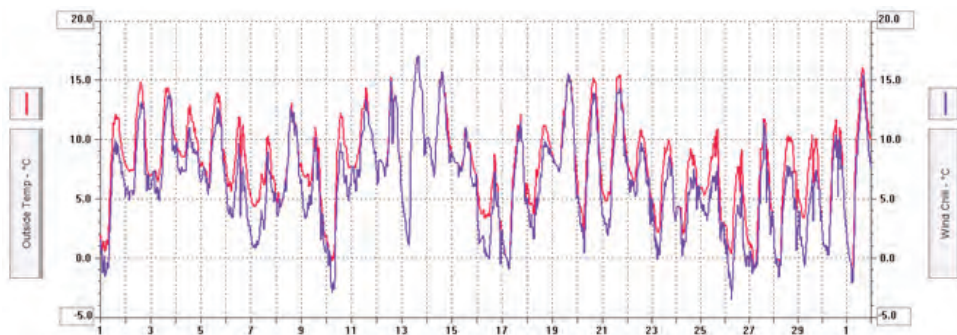
Elevation: 450 ft - Latitude: 51° 50' 13" North - Longitude: 0° 33' 34" West

As the old saying goes "April showers bring forth May flowers" but this was only partly true. We had the showers which only added up to just above average the monthly rain fall. We had sun but the spoiler was the cold wind coming from north, it did not seem to relent all month. The wind chill factor effect was so noticeable with some days it felt 5 drees lower than the actual temperature (see plot below) the mean temperature (average) was 7.7°C, two degrees lower than April 2015. We also had 13 days where we recorded frost, it is short lived this time of the year lasting an hour or so at dawn.

	High	Date/Time	Low	Date/Time
Temperature:	17.3°C	13 April 15.30	- 1.0°C	27 April 05.30
Mean Temperature	7.7°C			
Dewpoint:	10.1°C	3 - 11 April	- 1.9°C	27 April 05.30
Humidity:	97%	14 April 08.30	41%	2 April 15.30
Barometer:	1030.6 mb	20 April 00.00	996.6 mb	15 April 20.00
Wind Speed	34 mph W	28 April 02.00	Months avg.	5.4 mph
Wind Chill:	17.0°C	13 April 16.00	-3.4°C	26 April 06.30
Dominant Wind:	NW			
*Rain Days: 27(T), 20(R) Wettest Day 16 April 11.61mm 0.457 ins				
Monthly Rain:	Total	April 2015	48.2mm	1.97 ins
Yearly Rain:	Total	4 Month	278.6 mm	10.968 ins

April 2016

This plot shows the temperature in red and the wind chill in blue



For weather data 24 hours a day, updated every 15 mins, this site forecast and much more visit: www.dagnallweather.co.uk and http://bit.ly/weather_dagnall.

If anyone has a question, comment or wishes to contact me please email: david@dagnallweather.co.uk or telephone: 01442 843883.

Dagnall weather now has an app for your ipad & iphone! Just go to the apple store, search for Wunderstation and follow the instructions to Dagnall Weather Station. Now updated every minute.



Edlesbray Leisure Fellowship (ELF)

Hello everyone,

At last the weather has warmed up but there have been several short, sharp showers of rain, snow and sleet. Blossoms are showing their lovely colours in spite of some heavy winds. Cherries, almonds and hawthorns are beautiful in the sunshine. Enjoy them.

Our meeting at The Coffee Tavern on April 14th was lively with a few disappointments regarding some of the hoped for outings. Because of minor problems our planned ideas for Wisley, Thriplow and Beconscoth are now on the list for next year.

However, further discussions took place regarding a trip to Hughenden Manor in June. Details will be displayed in the North Porch of Eaton Bray Church and everyone is invited to join in. There is always transport available if required. A report will be in the August Focus.

A visit to the De Havilland Museum and the St. Albans Rose Gardens is planned in July. Details will be displayed, as usual, in the North Porch of Eaton Bray Church. A report will be in the September Focus. Everyone is welcome to

join in. Transport is available if required.

In September we are hoping to arrange a visit to The National Motor Museum at Gaydon and in October a visit to the Milton Keynes Museum. All details will be displayed in the North Porch of Eaton Bray Church when they are available nearer to the dates.

The walking group enjoyed a very nice walk to and around Trowley Bottom.

The circular walk, led by Brian F. started at The Old Chequers, Gaddesden Row. The group really enjoyed seeing the Bluebells in full colour as the weather was fine. The distance covered was approximately 5 miles. Thanks to Brian F. for arranging this walk. The group would welcome any newcomers to join them on these not too difficult, easy going fairly local strolls.

They meet at 9.30 on the 4th Monday in the Month outside Eaton Bray church.

There is NO COFFEE MEETING in JUNE.

JUNE DATES

Thurs 23rd - Visit to Hughenden Manor

Mon 27th Walk from Eaton Bray church 9.30a.m.

Beacon Villages Community Library

Run by the community, for the community

The AGM of Beacon Villages Community Library will be held on Saturday 9th July at 10am in the Town Hall, Ivinghoe. Please do come along to hear about our activities over the past year and elect the new committee for 2016/17.

If you are keen to join our committee, or just want to find out more, do get in touch with the secretary@bvcl.org.uk. We meet about every two months, and usually manage to get through the business in a reasonable amount of time!

www.bvcl.org.uk

General enquiries: info@bvcl.org.uk 01296 387890

Committee enquiries: secretary@bvcl.org.uk

Opening times:

Tuesday 2pm - 5pm

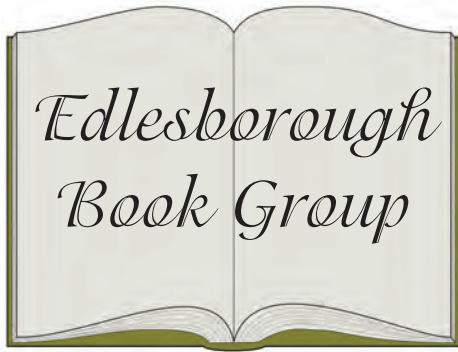
Wednesday 10am - 12noon

Thursday 2pm - 5pm

Friday 2pm - 7pm

Saturday 10am - 1pm





The Grass is Singing by Doris Lessing

This is the first novel, published in 1950, by the Nobel prize winning author, Doris Lessing. The story takes place in what was Southern Rhodesia, (now Zimbabwe) in the 1940s and deals with racial politics at that time. We know right from the beginning of the book that Mary Turner, the wife of a white Rhodesian farmer, is dead, killed by her black servant, Moses. Then, we are told in flashback, the circumstances that brought about the tragedy.

Mary was living an independent life in a nearby town, with a job that she enjoyed and a busy social life. She was quite contented with her single status until she overheard a chance remark about her spinsterhood at a party, which made her think that she should be married in order to gain the respect of her peers.

She marries in haste. Her bridegroom, Dick Turner, is a struggling farmer, full of good intentions, but without the knowledge and experience to make the farm profitable. Mary, although shocked by the very basic living conditions and having no

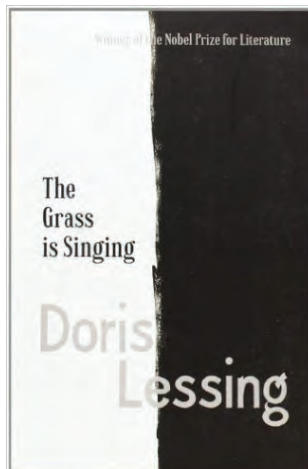
experience of housekeeping, tries at first to improve the farmhouse and to make it more comfortable. She loses house servants one after another, because of her intolerance and her husband is unable to fund improvements because of the farm's failure. Gradually, she becomes more and more disappointed by her husband's inadequacies and withdraws into herself becoming depressed and lethargic.

When Dick is laid low with bouts of malaria, Mary runs the farm. She is, in contrast to her husband, conscious of her superiority over her workers and treats them harshly. Whereas Dick has always tried to work with them and shown them consideration. This alienates the workers still further and creates even more problems for Dick and Mary.

This book is very atmospheric. The farm, its environment, the constant unrelenting heat and Mary's claustrophobic and isolated existence are brilliantly drawn. Our group, without exception, praised the descriptive writing, which was even more impressive when we learnt that the book was written when Doris Lessing was a mere 25 years of age. Also, that she had had no formal education and was

self taught by prodigious reading. We found plenty to discuss, as with hindsight we know what has happened to Zimbabwe and we could compare conditions and political attitudes then and now.

Although the writing was highly praised, two of our members didn't enjoy the book itself. The overall opinion was that this is a "classic must read".



Edlesborough W.I.

The April evening's meeting was called, 'A Taste of Summer'. On arrival the ladies were offered a glass of Pimms and a choice of delicious cake. Sitting at beautifully decorated tables the members enjoyed a chat before the evening commenced. Having toasted the Queen a happy 90th birthday and sorted out business matters, we sat back and enjoyed a return visit of the interesting speaker, Paul Rabbitts. Although a member of the 'Dull men of Great Britain Club,' Paul has been featured in the Telegraph, the Times and has appeared on the Jeremy Vine Programme. Paul gave an interesting and lively talk entitled, 'A Life in Landscape: Celebrating Parks, People and Places'. He talked about his thirty years of work which ranged from Jersey and the super rich to Cumbria City Council, where he was involved with the Carlisle Employment Action Scheme. He has transformed many derelict areas into areas of outstanding beauty with the aid of Lottery money and he has travelled to

amazing places such as Arizona, in order to gain insight into skate parks, which he brought back to England. He did in fact design a park, which cost three quarters of a million pounds to construct; most of which came from grants. Paul has continued to move around the UK with his work. These places of work include: Luton, the Scottish Borders, the Isle of Wight and at present Watford. Throughout his employment, Paul has dealt with large sums of money, which often came from the Lottery. Now, not only does he work in a job he loves but he also writes books. His choice of subjects include: parks and bandstands, which he feels absolutely passionately about.

The evening was rounded off with Meghan entertaining her audience by telling them an entertaining tale or two, an example of which was 'A Suburban Night's Grass Growing', a very amusing conversation between God and St. Francis, told in a variety of dialects and accents.

✍️ Jackie Flint

Red Lion Fundraising Day Thank You

The Red Lion would like to extend a massive thank you to everybody who attended and contributed towards our fundraising day last summer. We successfully raised over £1900, which has allowed us to purchase and install a defibrillator in the village. As well as this, the money raised allowed 8 local residents to be trained in first response. It was great to see the whole village coming together for such a worthwhile cause, and everyone getting involved – from face painting to tandem bike rides. The tug of war and quiz were particular highlights, with both adults and children showing their competitive side! We hope to see you all at our future fundraising events!



Salvation Sound



Prayer - Do you pray?

Do you worry sometimes that because you have difficulty in finding the right words to say, your prayer won't be heard? Do you fear that you might miss someone out? Or that your prayers are too casual, half-hearted? Squeezed in almost as an afterthought as you "jump" into bed; or if you do pray when in bed, you tend to fall asleep? Perhaps you feel that because you pray for the same things over and over again – God doesn't listen! Or maybe you're asking for the wrong things!

"We can't presume to know what's best

When we begin to pray;

So we must ask, "What honours God?"

Then seek His will and way".

Like a lot of Christians, prayer does not always come easily to me, nor do I always find myself praying for the things in life that really matter, the question is, then, why pray?

The answer, God gave me the privilege of being able to speak directly to Him, - Remember - "Truly, I tell you this: whatever you ask the father in my name, he will give you. Until now you have not asked for anything in my name. Ask and you will receive, so that your joy will be complete." John 16: 23-24 God does hear and does respond - A marathon runner reached the winning tape - he was muttering to himself as he did so. A bystander shouted out; "What's that you're saying?" The runner said, "I was praying", looking down at his feet, he smiled, then said "I was saying 'you pick them up Lord', and I'll put them down!!"

In the Bible, Paul urged his protégé Timothy: "Exercise yourself toward godliness. For bodily exercise profits a little, but godliness is profitable for all things, having promise of the life that now is and of that which come." I Tim.4 v7-8.

We don't need equipment to pray for a friend or to give thanks or to praise God.

A man transformed an overgrown plot of land into a beautiful garden. Pointing to a bed of flowers, he said to a friend, "Look at what I've done here." The friend replied, "you mean, look at what God and I did here." "Hmm," said the gardener, "I suppose you're right but you should have seen it when He took care of it by himself!!"

Well, we can smile at that sort of conversation but it expresses a truth - we can work wonders with God's help, if we ask in the right spirit - God partners us in both physical and spiritual areas of life. God does hear and He does respond; it may be that his answer is 'NO' or 'NOT YET' but it may also be that he has already answered 'YES', if only we can bring ourselves to believe it.

"Just as the body will grow strong, with exercise each day,

So too, we grow more like our Lord by living life His way."

Although God knows our every need, His works He wants to share;

He takes us into partnership by calling us to Prayer"

✍️Maureen

Thank you!!!



We would like to say a really big thank you for the wonderful response that we had to the appeal we made on behalf of 8 years old Kye for his electric wheelchair.

The Salvation Army Hall was packed with visitors, all of whom enjoyed the food, the coffee, the cakes, the B&B sale, and the "chatter". The magnificent sum of £2,266 was raised from the sales and with the donations given.

Our thanks to you all - God Bless You.

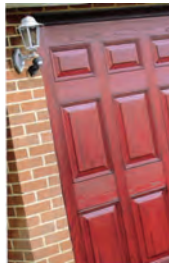


Premier Garage Doors & Gates



Quality Garage Doors

- ✓ Superb choice of designs in metal, wood and fibreglass
- ✓ Any size door made to your requirements
- ✓ Large selection of spares & fast repair service available
- ✓ New or existing doors converted to automatic
- ✓ Professionally fitted by own expert craftsmen
- ✓ Prompt free estimates & advice
- ✓ We cover all areas



(EST 1984)

DIY kits available
Insurance work welcome
Council approved
Remote control gates also available



Unit 7, Sparrow Hall Farm, Leighton Road, Edlesborough LU6 2ES

01525 220212

www.premiergaragedoors.co.uk

JANES

FLOORING DIGITAL APPLIANCES CYCLES SERVICE

JANES FLOORING



No obligation quote
Borrow samples
Uplift & disposal
Help with furniture

JANES DIGITAL



Same day delivery
Install & set-up
Tune-in
Take old away

JANES APPLIANCES



Competitive on price
Same day delivery
Install & set-up
Take old away

JANES CYCLES



Wide range
Built & ready to ride

JANES SERVICE



Repair & service
Appliances & TVs
Cycles
Small electricals



01525 220208

4-6 High Street
Edlesborough, LU6 2HS

www.janesltd.co.uk