

# FOCUS

March 2016



Focus is online at [www.thefocusmagazine.co.uk](http://www.thefocusmagazine.co.uk)

The local village magazine just for Us!  
Eaton Bray, Edlesborough, Northall & Dagnall

# *The White Horse Inn At Eaton Bray*



Market Square  
Eaton Bray  
Beds  
LU6 2DG  
01525 220 231  
[www.eatonbraypub.co.uk](http://www.eatonbraypub.co.uk)

Get involved with

# **BRAYFEST**

Eaton Bray's festival of beer, Wine  
and accompanying food!

**FRIDAY 29<sup>TH</sup> APRIL TO MONDAY 2<sup>ND</sup> MAY**

**10 real ales & world wines**

**Plus sausages and cheeses  
from around the world**

**plus great entertainment all weekend**

*Do you have a skill or hobby that you would like to  
display at the festival?*

*We are looking to expand the festival and want to hear about your  
ideas, please contact Tom at the pub by phone or pop in.*

# WOMEN'S WORLD DAY OF PRAYER

(PREPARED BY THE WOMEN OF CUBA)

**EATON BRAY  
METHODIST CHURCH  
FRIDAY 4TH MARCH  
2PM**

**SPEAKER:  
ENVOY HILARY CHADWICK  
FROM THE  
SALVATION ARMY**

# The Focus Magazine Committee

**Joint Editor:** George Crutcher

7 Summerleys, Edlesborough 221637  
**Email:** [george.crutcher@tiscali.co.uk](mailto:george.crutcher@tiscali.co.uk)

**Joint Editor:** Sally Siddons

34 Wallace Drive, Eaton Bray 221733  
**Email:** [sallysid@hotmail.com](mailto:sallysid@hotmail.com)

**Dagnall Representative:** Sue Cawdell  
10 Deans Meadow, Dagnall 01442 842200

**Circulation Manager:** John Plater

41 Church Lane, Eaton Bray 221095

**Treasurer/Leaflet Enquiries:** Ken Coates  
10 The Nurseries, Eaton Bray 220868

**Advertising:** Sally Siddons

34 Wallace Drive, Eaton Bray 221733

**Design and Layout:** Tracey Moren  
(Moren Associates Limited) 01525 229695

**Printed by:** Priory Press

Dunstable 01582 699851

Copy for publication to the Editors by the  
**10th of the month**

*Focus accepts no responsibility as to the accuracy or content of any advertising or articles published in 'this' magazine neither do they reflect the opinion of members of the Committee. © Articles published in Focus may not be reproduced without permission.*

**Focus would like to remind contributors that the deadline for articles is the 10th of the preceding month.**

*Kindly Note*

*If the event you wish to advertise falls in the first week of the month, it is advisable to get the details into Focus a month earlier. The magazines are not delivered from the printers until the first of the month, therefore it takes a few days for them all to be circulated throughout the village.*

*✍Editors*

**Focus is online at [www.thefocusmagazine.co.uk](http://www.thefocusmagazine.co.uk)**

invites you to

Eaton Bray  
Methodist  
Church

# Café Community

Saturday 12th March 2016

11.00am to 1.00pm

*Relax & chat with friends,  
coffee/light lunch*

*Charity of the month:  
Motor Neurone Disease*

*All ages welcome (inc. activity area).*



# Village Diary March 2016



## Weekly

- Mon-Fri (term time) Eaton Bray Pre-school, Eaton Bray Lower School, 01525 220468
- Mon-Fri (term time) Dagnall Under 5's, Dagnall Village Hall, 9.15am - 12.15pm, Mrs Ann Tobin 07816 358342
- Mon-Fri (term time) Edlesborough Pre-School, Edlesborough School, 01525 220431  
manager@edlesborough.bucks.sch.uk
- Mon-Thu (term time) Totternhoe Pre-school, mornings, Totternhoe Lower School, Michelle Urbanowicz on 01582 668841
- Mondays Pilates, 10.45am, Totternhoe Memorial Hall, Lisa: 07799 893489
- Mondays (term time) 2nd Eaton Bray Brownies, girls 7-10 years, Edlesborough Memorial Hall, 6 - 7.30pm,  
Contact Sandra Counsell 07979 521900
- Mondays Dagnall Community Choir, All Saints Church 7.45 – 9.45pm
- Mondays (term time) Movement and exercise classes with a dance flavour, Northall Village hall 2-3.30.  
Contact Jan 01442 864271.
- Mondays Curtain Call Youth Theatre 5-7.30pm, Eaton Bray Village Hall, Gavyn 01525 220525
- Mondays Curtain Call Theatre Group - 7:30-10:30pm Eaton Bray Village Hall, Sheila -  
sdtwinkletoes@yahoo.co.uk
- Mondays KFPA ISTD Classical Ballet classes, 3+yrs, 4.15pm, Edlesbrough Memorial Hall,  
www.kfpa.co.uk
- Tuesdays Line Dancing, 1.30-3p.m., Eaton Bray Village Hall, Lyn Stubbs 220731
- Tuesdays Pilates, 10-11am, Eaton Bray Village Hall, Nicky Roussou 07861 162680
- Tuesdays Totternhoe Baby & Toddler Group, 9.30-11.30am, St. Giles Church Hall, Ruth Allen,  
01525 222468 or 07796 265174 or email ruthallen002@gmail.com
- Tuesdays Northall Baby & Toddler Group, 9:30-11:30am, (open in the Summer School Holidays)  
Northall Village Hall, Stacey Richmond 01525 222999/07957 607592
- Tuesdays Tap & Ballet Classes, JoAnn Latus School of Dance, 4-8pm, Eaton Bray Village Hall,  
01582 620576
- Tuesdays Circuit Training - Edlesborough School Hall, 7-8pm - www.simplesfitness.com
- Tuesdays Buggy Push Fitness Class - Edlesborough Memorial Hall, 10:30 - 11:15am - www.  
simplesfitness.com
- Tuesdays Coffee Morning, Bring & Buy, Table Top Sale, 10-12noon, Salvation Army Hall,  
Booth Place, Eaton Bray
- Fortnightly
- Wednesdays Pilates, 7.15pm, Northall Village Hall, Lisa: 07799 893489
- Wednesdays Egyptian Dance Class, 7.30-8.45pm at Eaton Bray Village Hall. Contact: Soraya on  
07976 964316 for more details
- Wednesdays Northall & District Age Concern Wednesday Club, 10am - 3pm, Northall Village Hall,  
Contact Anna on 07854 230243
- Wednesdays Dynamic Yoga 6.30-7.30pm £5 Eaton Bray Coffee Tavern Keira 07936 693696
- Wednesdays (term time) Caterpillars preschool parent and child group 10 to 11:30am, Grace Baptist Church,  
Moor End, Edlesborough £1 per family unit, Rebecca Dennis 07920 062248
- Wednesdays Pilates 6.45-8.45pm, Dagnall Village Hall, Andrea on 07855 138005 or andrea@  
naturalpilates.co.uk
- Thursdays Yoga, Northall Village Hall, 11.30am-1pm 01525 377542
- Thursdays Baby & Toddler Group, Salvation Army Hall, Booth Place, Eaton Bray, 9.30-11.30am
- Thursdays Keep Fit, Edlesborough School, 8pm Tel: 01582 668735
- Thursdays Jazzercise, 9.30-10.30am, Eaton Bray Village Hall, Angela Veryard, 01525 715208
- Thursdays KFPA Street dance classes 4+yrs 4pm, Edlesborough Memorial Hall, www.kfpa.co.uk
- Thursdays Box-Fit - 7:30 - 8:30pm, Eaton Bray Village Hall - www.simplesfitness.com
- Thursdays Tae Kwon-do, Dagnall Village Hall, 5.45-7.30pm 07813 755785
- Fridays Tap & Ballet Classes, JoAnn Latus School of Dance, 4-8pm, Eaton Bray Village Hall,  
01582 620576

# Village Diary March 2016

Fridays	Keep Fit class, Edlesborough Mermorial Hall 10 - 11am
Fridays (term time)	“Little Luvvies” baby ballet classes 10am-11.30am. Contact Emma Whittemore on 01525 376124
Fridays (term time)	Kids Club 6:00pm to 7:00pm Grace Baptist Church, Moor End, Edlesborough (across from the post office) Frances King 01525 229610
Saturdays	Jazzercise, 9.30-10.30am, Eaton Bray Village Hall, Angela Veryard, 01525 715208
Saturdays	KFPA Musical Theatre classes 4+yrs www.kfpa.co.uk, 10am, Edlesborough Memorial Hall
Sundays	Sundays Worship at 10:30am and 6pm Grace Baptist Church, Moor End, Edlesborough (across from the post office). Barry King 01525 229610 or Peter Feben 01525 221048
Last Sunday	Messy Church, 3-5pm at The Salvation Army Booth Place
<b>Monthly</b>	
1st Monday	Eaton Bray Parish Council Meeting, 7.30pm, The Coffee Tavern (except January-2nd Monday)
1st Monday	Eaton Bray W.I. Meeting, 7.30pm. Eaton Bray Methodist Church Hall. Contact Margaret Jones on 01525 220991
1st & 3rd Tuesday	Dunstable & District Orbit (social and charitable) Club meet at Dunstable Rugby Club at 8pm. For details contact 01525 222441 or 01582 755147
1st Saturday	St. Mary’s Church, Eaton Bray Coffee Morning & Plant Sale, 10am - 12 noon
1st Sunday	May to September, St Mary’s Church, Edlesborough Open Day, 2-5pm
2nd & 4th Tuesday	TOTS, St Mary’s, Eaton Bray, 2pm
2nd Tuesday	Dunstable & District Local History Society meeting, 7.45pm, Methodist Church Hall, Dunstable (opposite Wilkinson)
2nd Tuesday	Edlesborough W.I. Meeting, 7.30 pm, Edlesborough Memorial Hall
2nd Wednesday	St.Mary’s Ladies Guild, 2pm, St.Mary’s, Eaton Bray
2nd Wednesday	Eaton Bray & Edlesborough Lions Club, 7.30pm, The Coffee Tavern
2nd Thursday	CAMEO Coffee, tea & chat, 10am-12noon, Edlesborough Methodist Church
2nd Saturday	Workshops Dynamic Yoga 9.30-11am £10 Eaton Bray Coffee Tavern Keira 07936 693696
3rd Thursday	Edlesborough Parish Council Meeting, 7.30pm, Memorial Hall
3rd Sunday	Lunch club 11.30 to 2.00pm, Eaton Bray Village Hall, Chris Hewitt 222288
Last Saturday	Coffee Morning, 10-12 noon, Edlesborough Methodist Church
Last Sunday	Messy Church, 3-5pm, Salvation Army, Booth Place, Eaton Bray, 07932 057490

## Other Regular Events

6th	Beds Area Narrow Gauge Model Railway Club Meeting, 11.30am-4.30pm, Eaton Bray Village Hall
12th	Cafe Community, Eaton Bray Methodist Church, 11am to 1pm
15th	Dagnall Over Sixties, Tea and Bingo, 2pm at Dagnall Village Hall
18th	Leukaemia Research Coffee Morning, 2 Dunstable Road, Dagnall 10.30 am. All welcome.
28th	ELF walk from Eaton Bray church, 9:30am

## One Off/Annual/Irregular Events

4th	Women’s World of Prayer, 2pm, Eaton Bray Methodist Church
5th	Edlesborough School Chesham Comedy Club, 7:30pm, £10 in advance, £12 on the door, Emma 07811 117099
11th	Wednesday Club Quiz Night, 7:30pm, Northall Village Hall, £8per person, contact Beryl on 01525 220868
25th	Ashridge Cadbury’s Easter Egg Trail, 10am-4pm, £3 per child
25th to 28th	Dunstable Downs Cadbury’s Easter Egg Hunt, 11am to 3pm, £2.50
26th	Purple Day for Epilepsy, Purple Photo Shoot, From 2pm at The Coffee Tavern

## Village Notices

### ROBERT FOUNTAIN

Olive and family would like to thank everyone for the beautiful cards, the kindness and sympathy received at the time of Bob's death. Also many thanks to all those who contributed towards the sum of £258 raised in aid of the East of England Ambulance Service Trust.



### EDaN Community Transport

Peter Williams:  
01442 842506

**FOR SALE**  
2.3kw steam wallpaper  
stripper  
Used once -  
wallpaper all gone!  
£25  
Phone 01525 221137

### Reliable housekeeper/ cleaner required for part- time position at home in Studham.

Hours are flexible but ideally a couple  
of hours per day, Monday to Friday.  
Good hourly rates.

**Tel: 01582 872169**

### Village Hall Bookings

To book your local village hall for an event please contact the following:

**Northall:** Lorna Cabbage Tel: 01525 220361

**Eaton Bray:** Norman Lee Tel: 01525 222831

**Dagnall:** Elizabeth Coates Tel: 01442 842550

**Edlesborough Memorial Hall:** Penny Pataky, Tel: 01525 229358

### Police Contact Numbers...

*making neighbourhoods safer together*

General Assistance (Recommended Number): 101    Emergency: 999

### Bedfordshire Police (Eaton Bray)

Leighton Buzzard Police Station/Kathryn Horgan: 01582 473411

Typetalk: 18001 01582 473418

Email: LPT.LeightonBuzzardLinslade&Rural@bedfordshire.pnn.police.uk

### Thames Valley Police (Edlesborough, Dagnall & Northall)

PCSO Jackie Dodson Mobile: 07800 703 524

Email: NHPT@thamesvalley.pnn.police.uk



"Good for a  
Giggle!"

Saturday 5th March

Edlesborough School presents: Chesham Comedy Club

for an evening of laughter, fun and beers. With comedians;

**President Obonjo** *"The President is a spectacle and should not be missed"*

**Nick Page** *"a huge dose of likeability with some very clever material"*

**And headline act, Phil Butler** *"Without doubt, one of the most exciting and original finds in comedy in recent years"*

**Doors open at 7.30pm for an 8pm start.**

There will be a licensed cash bar serving refreshing drinks and delightful snacks.

**Tickets £10 in advance (£12 on the door)**

Please book your tickets in advance by calling Emma Ogden-Trevor on 07811 117099. Seats are limited so please book your seats now!

All funds raised will go to Edlesborough School



# The 21st ! Village Hall Quiz Saturday 16th April



Come and help us celebrate this momentous occasion

This fabulous quiz with quizmaster Keith Blackburn will still include a **Free** supper with the questions. Bring you own glasses and drink.

**7.00pm for 7.30pm**

**Just £9 per person. Teams of up to 8 people  
Fabulous prizes!**



This event is organised jointly by Eaton Bray Village Hall Fundraising Committee and Eaton Bray Tennis Club



**For bookings contact Ross 221411  
ross.bagni@btinternet.com**



## Services at St Mary's Church

**SUNDAYS :**    **8.00am**    HOLY COMMUNION  
                  **10.00am**    PARISH SUNG HOLY COMMUNION

**On Third Sunday of each month:**

**10.00am** – WORSHIP FOR EVERYONE a shorter, less formal service for families. (For anyone wishing to attend a service where Holy Communion is offered, there is a Family Communion at 10.30am at All Saints' Church, Dagnall, where visitors are assured of a warm welcome).

**WEEK-DAYS:**

**Tuesday:**    **2.00pm**    TOTS (Tots on Tuesdays) (2nd & 4th Tuesdays)

**Wednesday:** **10.00am**    Holy Communion

*EVERYONE WELCOME AT THESE SERVICES*





# **A Letter from St. Mary's**

**Vicar: Coralie McCluskey**

**The Vicarage, 11 High Street, Eaton Bray - Tel: 01525 220261**

**Honorary Assistant Priest: Revd John Heffer**

**Reader: Gordon Gray (220136)**

**Church Warden: Catherine Hayden (220527)**

**Email: [admin@stmaryseatonbray.org.uk](mailto:admin@stmaryseatonbray.org.uk)**

**[www.stmaryseatonbray.org.uk](http://www.stmaryseatonbray.org.uk)**

Many of you will know that Coralie, the Vicar at St Mary's, has been on Study Leave since the beginning of January. As a result, it falls to me, the Reader, to write this month's letter from St Mary's. March will be a busy month at St Mary's beginning with Mothering Sunday on 6th March as we remember all that our mothers have done for us. This Sunday will mark Coralie's return, so I hope St Mary's will be packed with worshippers to welcome her home.

A fortnight later (20th March) is Palm Sunday. The congregation of St Mary's will process round the church as a way of re-enacting Jesus' entry into Jerusalem ready for Passover. Jesus would have come into Jerusalem from the east, from Jericho, Jesus had a message for ordinary folk, especially those on the margins of society, about the kingdom of God.

But his probably wasn't the only procession that day. It was standard practice for the Roman governors of Judea to be in Jerusalem for the major Jewish festivals – not out of religious devotion, but to be in the city in case there was trouble. So, on the opposite side of the city, and probably at the same time, there was a second procession coming up from the west. Pontius Pilate, the Roman governor, entered the city at the head of a column of imperial cavalry and soldiers. This would have been a display of imperial power and wealth: chariots, foot soldiers, leather, armour, helmets, weapons, banners, golden eagles mounted on poles, sun glinting on metal and gold. Pilate also had a message for ordinary folk from the powerful – if you mess with us you will face the consequences!

Jesus was a great teacher - he could use the smallest object, like a mustard seed to get across his message - and here he was using the classic teaching technique of 'compare and contrast'. Pilate's procession embodied the power, the glory, the greed and the violence of the empire that ruled the world. Jesus's procession embodied an alternative vision, the kingdom of God, a kingdom of justice, peace and love for all people.

The question that faces those of us who would be faithful to Jesus today is quite simple. In our modern world, which procession are we in? Are we in the procession of the powerful promoting power, greed and glory, the procession that takes violence against the weak for granted, or are we in the procession which proclaims the kingdom of God, a procession for justice, for peace and for love for all people?

Which procession are we in? Which procession do we want to be in? These are the questions of Palm Sunday and of the following week. The might of empire succeeded in crucifying Jesus – his message could not be tolerated by the powerful. On Good Friday (25th March) we will relive the horror of the death of a Saviour who shares our suffering and experience. But on Sunday we will celebrate the Easter message - the great affirmation that pain and death do not have to have the final word, that God's redeeming love can still bring us hope and joy and pleasure even in the darkest and most difficult times. And if we catch a glimpse of such resurrection experiences in our own lives then we can proclaim with confidence the Easter message "The Lord is risen – He is risen indeed. Alleluia." A happy and glorious Easter to you all.

Gordon – Lay Reader

# Carnival Queen & Princess

## St Mary's Village Carnival

Would you like to lead the Carnival Procession and open the Fete on Saturday 2nd July?

**Are you aged between 8 and 13 years?**

If so you could be the Carnival Queen or Princess we are looking for.

To take part all you have to do is complete and return an entry form (details below) and come along to Eaton Bray Village Hall on **Sunday 17 April at 11.15am** when the Queen, Princess and two Attendants will be chosen.

### **How to Enter**

Entry forms are available from [www.stmarysvillagecarnival.com](http://www.stmarysvillagecarnival.com) or from Kathy Ellison at 9 High Street, Eaton Bray. To find out more call Kathy on 01525 222406

**Entry forms should be returned to Kathy by 10<sup>th</sup> April**



# UNICORN WINDOWS LTD

“WHERE QUALITY & SERVICE ARE NOT A MYTH”

[www.unicornwindows.co.uk](http://www.unicornwindows.co.uk)

**Tel: 01525 854272**



Unit 3 Youngs Industrial Estate, Stanbridge Road, Leighton Buzzard

**comput@mation**

computer support & services

## Computer Support for Business & Home

### Problem Solving:

Virus & Spyware Removal  
Internet & Email Assistance  
Fault Diagnostics  
Repairs & Upgrades  
Slow Running PC's

### Sales:

Desktops, Laptops & Tablets  
Printers & Peripherals  
Software

### Services:

PC, Mac & Linux Support  
Wired & Wireless Networks  
Data Recovery  
Install & Set-up  
Health Checks

On-site Visits:  
Office Hours & Evenings  
by appointment

For friendly advice call John Wallace: 07968 536068 or 01525 261381  
Email: [john@computamtion.co.uk](mailto:john@computamtion.co.uk)  
Web: [www.computamtion.co.uk](http://www.computamtion.co.uk)

Computamtion Services Ltd - Est.1999 with over 25 years experience  
9a Lower Way, Great Brickhill, Buckinghamshire, MK17 9AG

# Carpet & Upholstery Cleaning

Professional & Local

All work guaranteed - not happy, don't pay

Powerful equipment means drier much quicker than other methods

100% Guaranteed no chemicals left in carpet when dry therefore will not easily resoil & perfectly safe for children & pets

Recommendations account for 90% of my work

Absolutely no hard sell

Telephone Colin for a Free Quote

**DEEP-CLEAN**

**01525 851 811**

[www.deep-cleaners.co.uk](http://www.deep-cleaners.co.uk)

Email: [colin@deep-cleaners.co.uk](mailto:colin@deep-cleaners.co.uk)

## **EDLESBOROUGH SURGERY**

**11 Cow Lane Edlesborough**

**Enquiries - 01525 221630 Appointments - 01525 220333**

**[www.edlesboroughsurgery.co.uk](http://www.edlesboroughsurgery.co.uk)**

**Dr J R Bell, Dr Heather Counsell**

**Dr Tisha Patel**

**Dr Stephanie Johnston, Dr Kirsten Riemer**

Friendly village Practice offering a wide range of health services including coils/implants, minor surgery, travel advice, in house blood tests, on-line appointments and repeat prescription ordering. Four Nurse Practitioners offering acute clinics with same day appointments. Also, midwife, health visitors in attendance. Local District Nurse Service.

Long established training Practice with a rotation of qualified doctors.

## **EDLESBOROUGH PHARMACY**

**01525 223181**

**Pharmacist – Mitul Patel**

Friendly reliable professional service at the pharmacy

All doctors/dentists/veterinary and hospital prescriptions dispensed

Professional advice always available

Herbal/Homeopathic products

Special Orders on request



For all your painting & decorating requirements  
 Domestic and Commercial  
 call Max for a free estimate with no obligation  
[maxbro@btinternet.com](mailto:maxbro@btinternet.com)



**City & Guilds**  
 Qualified

- **Plumbing** - Showers, Toilets problems, Baths, Outside Taps, Drips & Leaks, Radiators, Tiling
- Specialising in Full or Partial Bathrooms Installations (References available on request)

Call Mark for a FREE no obligation quote **01525 220994**  
 All work fully insured and guaranteed. **07842 653832**

**30 Years Experience**  
**Domestic & Commercial Security**



**Burglar Alarms**  
**Redcare Monitored Systems**  
**Intercoms**  
**CCTV**  
**Access Systems**  
**Locks**



CERTIFICATE NO. NAC/G/2113

**Quality Installations – Competitive Prices**  
**Insurance Approved** **Free Surveys**

**AAA SECURITY**

**01525 378222**

Email: [sales@aaasecurity.co.uk](mailto:sales@aaasecurity.co.uk)

[www.aaasecurity.co.uk](http://www.aaasecurity.co.uk)





Local family run business - Not a franchise

All chemicals used are Eco-friendly, non-toxic, non caustic and non allergenic  
**All work guaranteed and fully insured**

All products are Child, Pet and Pregnant Safe

- Ovens & Hobs
- Extractor Hoods
- Microwave Ovens
- Agas
- Fridges
- Carpets
- Rugs
- Upholstery
- BBQs
- Freezers



☎ 01525 22 19 22 or 0800 122 3393

🌐 [www.ecotechovenandcarpetcleaning.co.uk](http://www.ecotechovenandcarpetcleaning.co.uk)

@ [info@ecotechovencleaning.co.uk](mailto:info@ecotechovencleaning.co.uk)

# *Dominic Woolcott*

## Painter & Decorator



- Internal & External
- Plastering & Coving
- Insurance Work
- 20 Years Experience
- Competitive Rates

**For a professional job call:  
01525 229682 or 07747 042879**

# P. DYER ELECTRICAL

For all your Electrical & Testing & Inspection needs

- Re-wires
- Testing & Inspection
- Security Systems/Lighting
- LED & Low Energy Lighting
- Decorative Lighting
- PAT Testing
- Fuse Boards
- Fault Finding/Repairs

Fully insured, Part P registered, all work guaranteed.  
Fast, friendly, reliable, local electrician. For a free,  
no-obligation estimate, call Paul on:



**Tel: 01525 222109**  
**Mobile: 07850 682815**



David John Harris



(Established 1992)

All Fencing Work • All Gates • Paving • Patios  
Driveways • Shingle • Hedge Setting and Cutting  
Grass Cutting • Turfing Specialist • Exterior  
Painting Service • Sheds Small Building Work  
Trees & Shrubs Supplied

**Tel/Fax: 01525 221745**  
**Mobile: 07889 143713**

## Barry Cato Motor Repairs

Est. 1981

Servicing, repairs and MOT's arranged

**Workshop at:**

r/o Norfolk House Farm, Harling Road  
Eaton Bray, Dunstable, Beds, LU6 1QY

**Tel: 01525 221681 (workshop)**  
**07836 650015 (mobile)**



## GYM & TONIC

**WANT TO GET FIT, HAVE A  
HEALTHIER LIFESTYLE & IMPROVE  
THE WAY YOU LOOK & FEEL?**

The following can be provided in our  
Gym in Edlesborough or in your home

- \* **A Health & Fitness Consultation** \*
- \* **Personal Training** \* **Massage** \*

Ruth Anderson Dip. PT & ST, Member of: Inst of Sports  
Therapists & Register of Nutritional Therapists

**Tel:01525 223074 Mob:07812 163979**

## D NICHOLSON PLUMBING REPAIRS and INSTALLATIONS

NO JOB TOO SMALL

- Emergencies • Free Estimates
- No call out charges



Dave Nicholson

**MOBILE: 07976 975604**  
**HOME: 01525 872335**

**City &  
Guilds  
Qualified**

For all your building needs look no further



# BRIGGS

## BUILDING & CARPENTRY SERVICES

Established 1981



For a professional, friendly service call:

**(01525) 221767**

**(07970) 214439**

### Domestic & Commercial

Extensions  
Renovations  
Conversions  
Alterations

New Builds  
Roof Repairs  
Kitchens  
Bathrooms

Patios  
Driveways  
Decking  
Garden Walls

Mini Digger, Skip Loader and Dumper Hire

All Work Guaranteed

Free Estimates



# Flicks & Bangs

HAIR SALON

A warm, friendly salon offering a wide range of bespoke hair services for all the family. Feel free to pop in for a complimentary consultation.

[www.flicksandbangs.com](http://www.flicksandbangs.com)

#### Flicks & Bangs

66 High Street  
Eaton Bray  
Nr. Dunstable  
Beds LU6 2DP

**01525 221252**



#### Opening Hours

**Mon** Closed  
**Tue** 9 am - 5 pm  
**Wed** 9 am - 5 pm  
**Thu** 9 am - 8 pm  
**Fri** 9 am - 7 pm  
**Sat** 8 am - 4 pm  
**Sun** Closed



**pinstripes** signs  
**pinstripes** graphics  
**pinstripes** clothing

**01525 220485**  
**07973 167779**



**BUSINESS CARDS**

[www.pinstripessigns.co.uk](http://www.pinstripessigns.co.uk)  
**find us on facebook**  
 pinstripes signs graphics clothing

**WASHING MACHINE REPAIRS**

ALSO  
 DISHWASHERS, TUMBLE DRIERS,  
 AND ELECTRIC COOKERS



Call  
**ANDERSON D.R.S.**

**01582 665764**

[www.andersondrs.co.uk](http://www.andersondrs.co.uk)  
 SALES AND RENTALS AVAILABLE

 **Lee Hutt**  
 Heating & Plumbing Services

Bathrooms, Design & Installation

Tiling ♦ Heating ♦ Powerflushing ♦ Taps ♦ Leaks

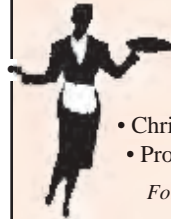
Call Outs ♦ Free Estimates Given



**01525 222145**



**07971 559185**



*Patricia's Cuisine*

Catering For All Occasions

- Buffets, Dinners •
- Christenings, Weddings, Funerals •
- Promotions & Business Lunches •

*For Enquiries & Menu*

Meadside Farm, 104 High Street,  
 Eaton Bray, Bedfordshire, LU6 2DP

**Telephone: 01525 222174**

**P.J.BRINKLOW**

**Electrical Contractor**

**01525 220469**

**07860 781330**

**43 Pebblemoor  
 Edlesborough**

*'A wonderful place to be'*



# **Eaton Bray Academy**



**T. 01525 220468**

**E. [admin@eba.ec](mailto:admin@eba.ec)**

**[www.eatonbrayacademy.co.uk](http://www.eatonbrayacademy.co.uk)**

# smartAUTOGROUP

ESTABLISHED LOCALLY FOR 14 YEARS

Fully equipped Car Bodyshop, Service Workshop  
& MOT Bay



- New MOT Bay
- 4 Wheel Alignment & Tyre Fitting
- Specialists in Complete Classic Car Restoration
- Dealer Trained Technicians
- Ford, Vauxhall, VW, Audi
- Extensive Experience in Prestige Car Paintwork and Repair
- One-Stop-Shop for all your Servicing, Repairs, Bodywork & Maintenance
- Accident & Vandalism Damage
- All Insurance Work Undertaken - We can also cover your Excess and provide a Courtesy Vehicle (subject to T's & C's)
- Mobile Car Body Repairs – Fully Equipped Vans that come to your Home or Office.
- Alloy Wheels – Dents - Bumpers – Chips – Scratches - Scuffs
- Free Collection and Delivery, Loan Cars and Lifts when required

We pride ourselves on always being competitive for the right job.

**£10 OFF WITH  
THIS ADVERT**



Call us on **01582 664772** or visit **[www.smartautogroup.co.uk](http://www.smartautogroup.co.uk)**

Units 17 & 18a, Icknield Way Farm, Tring Road, Eaton Bray, Dunstable LU6 2JX

# St Mary's Village Carnival 2016



This year's Carnival Queen and attendants will be chosen by draw on Sunday 17th April at 11:15am in Eaton Bray village hall. If you are aged between 8 and 13 years and live in Dagnall, Eaton Bray, Edlesborough or Northall you could be leading this year's procession in the Carnival Queen carriage. The contact for Carnival Queen is Kathy Ellison on 01525 222406; see separate page in this Focus for full details.

One again this is an appeal to local businesses as well as schools, youth groups, and organisations to be involved in the Carnival and have your organisation promoted during this event. The ever increasing foot print of the Carnival, with visitors from Aylesbury, Milton Keynes, Dunstable, Luton and Hemel Hempstead, is an ideal vehicle for promoting your business. As an organising committee we can work with you to find the best means of advertising your business to the crowds who attend the Carnival if you give us a chance to do so. Here are a few ways that the Carnival could work for you:

- Advertising in the Carnival Programme – delivered to all the households in Dagnall, Eaton Bray, Edlesborough and Northall
- Advertising in the arena
- Have a float in the Carnival procession
- Have a stall at the Carnival
- Donating a prize for the Grand Draw
- Donating a prize for the Silent Auction
- All details of Carnival 2016 including how to book a stall, arrange advertising, offer prizes and much more can be found on the Carnival website:

**[www.stmarysvillagecarnival.com](http://www.stmarysvillagecarnival.com)**

For any specific questions or if you would like to get involved with organisation of the carnival either by helping for a few hours on the day or providing assistance in the months before July contact Gordon Gray on 01525 220136 or through the carnival website.

Janes have had 10 years of free advertising in the

Carnival Procession with their van. You can advertise your business in the same way. Go to the

Carnival website –

[stmarysvillagecarnival.com](http://stmarysvillagecarnival.com)



# Edlesborough Parish Council News

Including Edlesborough, Dagnall and Northall

## New Trees on Edlesborough Green

The EDaN Beautification team have recently completed the first stage of their tree planting plan for Edlesborough Green. Any parishioner wishing to sponsor a tree should contact Sharon Stilliard via email [sharonstilliard@yahoo.com](mailto:sharonstilliard@yahoo.com)

## Parking in the Parish

There has been an increasing incidence of inconsiderate parking within the villages. This not only causes inconvenience and danger to pedestrians but damages the pavement. With the increasing number of cuts being made by Bucks CC it is becoming increasingly hard to get our pavements maintained and repaired. We need to protect our pavements from further damage caused by vehicles parking on them.

## The Highway Code

Rule 243

DO NOT stop or park:

- opposite or within 10 metres (32 feet) of a junction, except in an authorised parking space
- where the kerb has been lowered to help wheelchair users and powered mobility vehicles

Rule 244

- You **MUST NOT** park partially or wholly on the pavement in London, and should not do so elsewhere unless signs permit it. Parking on the pavement can obstruct and seriously inconvenience pedestrians, people in wheelchairs or with visual impairments and people with prams or pushchairs.

In addition, if you use contractors or have any deliveries please remind them not to park on the pavement.

## Defibrillators in the Parish

In May 2015 the Parish Council had a very informative demonstration by the South Central Ambulance Service regarding the installation of defibrillators within the parish. St Mary's Carnival Committee have now confirmed that they will make a donation to support the purchase of defibrillators within the Parish.

## Parish Council Handyman

In December Mr David Thompson retired from his position as Handyman to Edlesborough Parish Council. Mr Thompson had worked for many years throughout the Parish carrying out many jobs for the council including grass cutting, looking after the cemetery and churchyard, carrying out repairs to the Memorial Hall, Pavilion and play area, etc. He was passionate about the villages and will be greatly missed. The Parish Council wish to thank him for his years of dedication and commitment he gave to the role.



## **Reporting Potholes & Fly Tipping & Rights of Way**

Please report any pavement issues, potholes, fly tipping and Rights of Way issues to <http://www.transportforbucks.net/Tell-us.aspx> If possible please take a photo of the problem and upload it when making the report.

## **Allotments**

Edlesborough Parish Council currently has vacant allotments. Anyone wishing to take on an allotment should contact the Parish Clerk. Fees are £1:80 per pole and plots range in size from 5 – 20 poles.

## **Dog Fouling**

The majority of dog owners act responsibly but the few who don't think that they can get away with not picking up after their pet if they believe they cannot be seen.

Do you:

- Know of a dog owner who does not pick up after their pet?
- Are the dog(s) usually exercised at a certain time during the day?
- What time(s) are the offences occurring and where?
- Have a description of what the dog(s) look like?
- Have a description of the person walking the dog?
- If the dog owner is using a car, what is the number on the registration plate?



Dog fouling is more effectively tackled when the whole community works together.

We need your help as, if more people come forward to report dog fouling offences, irresponsible dog owners may start to think twice about their actions.

To help us in our quest for a cleaner, healthier neighbourhood please report any fouling incidences to:

## **Aylesbury Vale Environmental Services**

**Telephone 01296 585858 (ask for Environmental Health)**

**or email [envhealth@aylesburyvale.gov.uk](mailto:envhealth@aylesburyvale.gov.uk)**

You may also wish to know that our local PCSOs will be authorised by AVDC to serve fixed penalty notices on our behalf.

## **Neighbourhood Plan**

The six public meetings arranged for January took place as planned. Approximately 200 people attended the meetings overall. At the meetings, the reasons for developing a plan were shared together with the timetable and path forward. Once we have a plan examined and passed by a government approved inspector the plan will be put to all parishioners on the electoral register to seek your support.

A key element in developing the plan is the involvement of parishioners. To that end, meeting attendees were invited to complete a form giving their email address for more timely and effective communications. We have created a mailing list specifically for the Neighbourhood Plan project. We also invited everyone to indicate if they were willing to help develop the plan and over 80 responded positively. All attendees were asked to indicate their areas of interest in the plan such as housing, green infrastructure and community facilities.

If you were unable to attend any of the meetings but would like to be added to the Neighbourhood Plan Mailing List please send your details to the Clerk, Penny Pataky at the email address given below.

## Speedwatch

The EDaN Traffic Management team are looking for volunteers to help man their Sentinel device. If you have an interest in slowing down traffic in the villages or are concerned about Road Safety please contact Louise Turner on 01442 834123 or by email at [louisefanthorpe@yahoo.co.uk](mailto:louisefanthorpe@yahoo.co.uk)



## Edlesborough Parish Council Meetings

The next Edlesborough Parish Council Meetings will take place in Edlesborough Memorial Hall on:

- Thursday 17th March 2016
- Thursday 21st April 2016 This evening will include the Annual Parish Meeting where the council will review the achievements of the past year and set out the plans for the future. Parishioners are invited to raise issues and debate them with the council.

The meetings will commence at 7:30pm.

All Parishioners are welcome to attend and may ask questions, raise issues and give suggestions during the Open Forum before the formal start of the meeting.

The full minutes of the Parish Council meetings are normally available to view on the website or from the Parish Clerk.

## Edlesborough Parish Council Contact Information:

Clerk to Edlesborough Parish Council: Clerk: Penny Pataky 01525 229358

Email: [clerk@edlesborough-pc.gov.uk](mailto:clerk@edlesborough-pc.gov.uk) Website: [www.edlesborough-pc.gov.uk](http://www.edlesborough-pc.gov.uk)

Facebook: [www.facebook.com/EDANParishCouncil](http://www.facebook.com/EDANParishCouncil)

*Please note office hours are Monday – Friday 10.30am – 2.30pm.*

*Messages may be left on an answer phone outside of these hours.*

# OPEN GARDENS

Since 2006, one of the social highlights of the year in our villages has been our Open Gardens event. We have had some wonderful afternoons enjoying gardens that have been opened by willing gardeners; both gardeners and visitors the experience in equal measure.

This year's event will on 24th July so people who have previously opened their gardens in mid-June may wish to show off an entirely fresh colour scheme and others who have not opened their gardens before may feel their garden is more beautiful in July. This is a really special event in our villages' calendar. We already have a few

**Please would you  
open your garden?**

**Contact**

**Kay - 222849 or**

**Gordon - 220136**

offers of gardens but we do need some more.

Now is the time to offer to open your garden. It can be large or small – all gardens have something to offer visitors and past experience suggests that those who open their gardens are delighted by the positive feedback they receive. Do please think about it, then get in touch with either Kay Griffiths (222849) or Gordon Gray (220136).



# Check it out



If you're aged between 40 and 74, Central Bedfordshire Council is encouraging you to take a moment to focus on your health by attending a free NHS Health Check at your GP surgery, which has the potential to add years to your life.

An NHS Health Check is like a mid-life MOT, which assesses your risk of developing common health problems such as heart disease, stroke, type 2 diabetes, kidney disease and some forms of dementia – conditions that can often be prevented.

You'll be invited for an NHS Health Check once every five years as long as you haven't previously had a heart attack or stroke, and don't already have a diagnosis of diabetes, angina, COPD, high blood pressure or kidney disease.

And you don't have to wait to be invited for your NHS Health Check - you can contact your GP surgery to make an appointment.

During your health check, your healthcare professional will take the following measurements:

- Height, weight and body mass index (BMI)
- Waist circumference
- Blood pressure and pulse
- Cholesterol level

You'll also be asked about exercise, any alcohol you drink and whether you smoke.

This information will be put into a calculator to predict your chance of developing heart disease and, if you're found to be at risk of developing this or any other health conditions, you'll be given tailored advice to make the changes needed to improve your health.

Councillor Maurice Jones, Executive Member for Health at Central Bedfordshire Council, said: "NHS Health Checks give you the opportunity to prevent ill health before it becomes a condition that needs treatment – helping to keep you healthy for the ones you love."

To find out more, contact your GP surgery or go to [www.centralbedfordshire.gov.uk](http://www.centralbedfordshire.gov.uk) and search 'NHS Health Check'.



Aged 40-74?  
Find out about your **FREE** NHS Health Check

*"I was always at the surgery for my mum, it was great to be there to have a chat about me"*

Ask your GP surgery for more details or search online for 'NHS Health Check Bedfordshire'



Bedford Borough Council and Central Bedfordshire Council working together

# Easter Events

## Ashridge

### Cadbury's Easter Egg Trail

Come and eggsplore Ashridge by following our Easter egg trail

**25 Mar 2016 to 26th March - 10am to 4pm**

Put on your wellies and eggsplore the secrets of the woodland at Ashridge. Answer questions along the way and collect your reward at the end.

The event is sponsored by Cadburys and they will be providing the delicious Easter Egg reward at the end.

Child £3.00

Dogs on leads are welcome

Trail starts from the Ashridge Estate Visitor Centre

Bring clothes you don't mind getting muddy and don't forget your wellies.

There is an accessible route which is suitable for pushchairs and wheelchairs.

### Easter Crafts

Come along to the visitor centre for Easter crafts

Booking not needed

**27 Mar 2016 to 15th April - 10am to 4pm**

Join in our Easter activities by making a Bunny mask and other exciting things

Child £2.00

## Dunstable Downs

### Cadbury's Easter Egg Hunts

The Cadbury's Easter Bunny has been up to his old tricks again, hopping all over the Downs and leaving lovely chocolate eggs behind! Join us for a fun-filled Easter Egg Hunt.

Booking not needed

**Fri 25 Mar 2016 to 28th March**

**11am to 3pm**

The Cadbury's Easter Bunny has been up to his old tricks again, hopping all over the Downs and leaving lovely chocolate eggs behind! Join us for a fun-filled Easter Egg Hunt.

All £2.50



# relax



let us  
take care  
of the sale or  
rental of  
your home



Christopher Pallet  
Professional advice since 1973

## Don't just take our word for it ....

"I have let properties through Christopher Pallet for over 10 years. I run the local pub and always refer people seeking to buy or rent to Colin and Linda because of the 1<sup>st</sup> class service I have experienced over the years. Their personal attention and "nothing is too much trouble" attitude makes them number one in my book."

Tom Dunnell

"My family wish to express our very grateful thanks for all your great help and consideration over the years letting and selling our properties"

Moller / Hawkins Family

"Thank you so much, I'll be sorry to lose you, you've restored my faith in Estate Agents. The nicest and most decent I have ever met. \*\*\*\* & \*\*\*\* estate agents need to take a training course from you !!

Fiona Newberry



Christopher Pallet  
Professional advice since 1973

Zoopla  
Smarter property search

rightmove  
the UK's number one property site

Ombudsman  
Services  
Resolving Consumer Disputes

Call Linda or Colin on 01525 222333

# ASPECT

YOUR LOCAL ELECTRICIAN  
TOTTERNHOE  
OVER 20 YEARS EXPERIENCE

# ELECTRICAL

CONSUMER UNIT UPGRADES (FUSE BOARDS)  
LIGHTING - INTERIOR, EXTERIOR & SECURITY  
REWIRING  
NEW INSTALLATIONS  
TESTING & INSPECTION

ALL WORKS TO CURRENT WIRING & BUILDING REGULATIONS  
PART P CERTIFICATED & FULLY INSURED



CALL STEVE ON  
07976 283969 / 01582 665068  
aspect@sparky.me



## IRON OUT

Complete Laundry Service  
Shirt Service  
Duvet Cleaning  
Ironing

Free collection & delivery from  
home or office

01582 667332 / 07885 320042  
Email: ironout@aol.com

Anne Johnson D.O.  
Registered Osteopath

6 Moor End,  
Eaton Bray

01525 221958  
07957 250682



## R.J.O'CONNELL BUILDING SERVICES

EXTENSIONS, PATIOS,  
DRIVEWAYS, ROOF REPAIRS  
AND PROFESSIONAL  
DECORATING SERVICE

TEL: 01296 681323  
MOB: 07855 236726

## Will Kimberley Garden Services 01442 255784

Phone for a free no obligation written estimate  
wkgardenservices@btconnect.com

- High hedges a speciality
- Fences erected and repaired
- General garden tidy up's
- In fact any job in the garden!

**EXCEEDING EXPECTATIONS IS JUST PART OF OUR SERVICE**



If you're **selling**, **letting** or **buying** a home, make it happen with your local estate agent



01525 220605 • [info@giblinproperty.co.uk](mailto:info@giblinproperty.co.uk)  
[www.giblinproperty.co.uk](http://www.giblinproperty.co.uk)

# THE WORKTOP SPECIALIST

DELIVERING OUTSTANDING QUALITY & SERVICE FOR ALL YOUR WORKTOP & JOINERY NEEDS FOR OVER 50 YEARS

- FREE HOME MEASURING SERVICE
- CUTTING & EDGING SERVICE AVAILABLE
- VISIT OUR BRAND NEW SHOWROOM

Abbey Gate, Boscombe Road,  
Dunstable, Bedfordshire, LU5 4FA

Tel: 01582 668 973 Fax: 01582 608 227  
Email: [sales@dunstablelaminates.co.uk](mailto:sales@dunstablelaminates.co.uk)  
Web: [www.dunstablelaminates.co.uk](http://www.dunstablelaminates.co.uk)



@DLaminates



Dunstable Laminates



## Make a Will

AND LASTING POWERS OF ATTORNEY

**YOU DECIDE** who is to run your affairs, who gets what, guardians etc, not the State.

**MINIMISE RISK** of Inheritance Tax and the disinheritance of children.

**Best Price Guarantee**

from specialist Solicitors and professional Will Writers since 1999

**FREE HOME VISIT**

For a DAYTIME or EVENING appointment call

**01525 220644**

[www.wisechoicewills.co.uk](http://www.wisechoicewills.co.uk)

MAKING A WILL  
HAS NEVER  
BEEN EASIER



Will Trusts  
& Probate  
Practice

*A wise choice*



**Café  
masala**

*Exquisite Indian Cuisine*

We Cater for Office or Private Parties and don't forget to try our Sunday Buffet

10% Discount on all Takeaway Orders Over £12

Fully Licensed & Air Conditioned

Open Seven Days a Week

Hours: 12 Noon to 2.30pm & 6.00pm to 11.30pm

**Tel: 01525 22 22 64**

63 Bower Lane · Eaton Bray · Dunstable · Beds · LU6 1RB  
email: [taraque@hotmail.co.uk](mailto:taraque@hotmail.co.uk) · [www.cafemasala.com](http://www.cafemasala.com)

# alto window cleaning

For a professional service.....

- Window cleaning
- Conservatory cleaning
- Fascia & gutter cleaning

**07876 594186**

## AARON FENCING

ALL TYPES OF DOMESTIC & COMMERCIAL  
FENCING & DECKING WORK UNDERTAKEN

FREE ESTIMATES  
FULLY QUALIFIED & INSURED  
PERSONAL SERVICE AT COMPETITIVE PRICES

**TEL: 01582 665779**  
**MOBILE: 07798 927272**

7 STATION ROAD, DUNSTABLE, LU5 4HS

Buy Direct From Our  
Own Farm

Master Card

VISA

From Ivinghoe Turf

- Commercial & Domestic
- Small Orders Welcome
- Bark, Grass Seed & Fertiliser
- Laying Service
- Discount on Larger Orders
- Screened & Blended Topsoil
- All Year Availability
- Forklift Delivery Available



ROLAWN<sup>®</sup>  
Approved Rolawn  
Stockist

Family firm farming since 1949

**ALL AREAS**

Freephone :

**0800 043 5061**

[www.ivinghoeturf.com](http://www.ivinghoeturf.com)

The Bungalow, Vicarage Farm, Ivinghoe, Leighton Buzzard

Established over 20 Years

## Duncan Tomblin TREE SURGEON

Forestry Contractor • Tree Felling  
Crown Reduction & Thinnings  
Deadwooding • Hedge Cutting  
Stump Grinding • Site Clearance  
Private Agriculture Fencing Contractor  
Chipper & Stump Grinding Hire  
Digger Hire

FULL PUBLIC LIABILITY INSURANCE  
FREE ESTIMATES

'The Best Choice For Your Tree'

**TEL: (01525) 221946**  
**MOBILE: (07802) 410728**

12 Greenways, Eaton Bray, Beds

## ARC Contract Services Ltd

- Painting & Decorating • Plastering
  - Wall & Floor Tiling • Door Hanging
  - Bathroom & Kitchen Installations
- 20 years experience

All work guaranteed and fully insured

Call Adrian : **01582 539179**

Mobile : **07789730580**



## WESTROPE BROS.

**LAWN MOWER SERVICES**

ALL TYPES OF GARDEN MOWERS SERVICED

**THE RYE, EATON BRAY**

**Tel: Eaton Bray 220587**

# Gas Boiler Servicing

Over 40 years experience

Have your boiler serviced by a **Gas Safe**  
and **CORGI** registered engineer

Other services available:

Maintenance, repair and installation of all domestic gas appliances including LPG. Boiler installations, Landlord Safety Certificates and Power flushing.

Free Quotes, no call out fee, and free friendly advice on all of the above.

## Edwards Gas & Heating Services

Eaton Bray

Tel 01525 220626

[www.edwardsgasandheating.co.uk](http://www.edwardsgasandheating.co.uk)  
[stevethegas@orange.net](mailto:stevethegas@orange.net)



*Vicky*  
The Dog Grooming Specialist  
[www.vickysdogcare.co.uk](http://www.vickysdogcare.co.uk)



*With a reputation for offering an exceptional personal service*



- Over 29 years of professional experience
- Trained at the London Academy of Professional Groomers to the highest City and Guilds standard
- Dorwest Veterinary Trained
- Member of the Pet Industry Federation
- Sympathetic and gentle handling of all dogs
- **FREE** Health check with every grooming session
- **No cages used! No cage dryers!**
- One to one personal attention.....loads of TLC

*Where Dogs Come First!*



Mobile: 07796 445416

Telephone: 01525 222775

Email: [enquiries@vickysdogcare.co.uk](mailto:enquiries@vickysdogcare.co.uk)



*Committed to the highest standards of animal welfare and customer care*



Over 30  
Years  
experience.  
FREE  
Quotes

# Misty Double Glazing?

Over 30  
Years  
experience.  
FREE  
Quotes

**KEEP YOUR WINDOW FRAMES...  
... WE JUST REPLACE THE GLASS!**

- UPVC • Aluminium • Or Wood

Because we replace just the glass the repair is a  
Fraction of the cost of a complete replacement window.

BEFORE



AFTER



**mistydoublinglazing.co.uk**  
**QUALITY GLAZING SERVICES**

**01525 876808**

**WE ALSO REPLACE BROKEN...**

- Glass • Handles • Hinges & Locks
- AND REPAIR...Patio Doors & Conservatories!**



Virtual administrative  
support to businesses &  
private individuals

- Website hosting
- Domain registration
- Desktop publishing

**01525 229695**

Email:

[enquiries@morenassociates.co.uk](mailto:enquiries@morenassociates.co.uk)

[www.morenassociates.co.uk](http://www.morenassociates.co.uk)

## Absolutely Plastered

**DOMESTIC/COMMERCIAL,  
CLEAN AND RELIABLE SERVICE,  
FREE ESTIMATES, FRIENDLY ADVICE**



- \* Plastering & Coving
- \* Floor Screeding
- \* Pebbledashing & Rendering
- \* Dry Lining
- \* Cornices & Mouldings
- \* Insurance Work Undertaken

**CALL NICK CONWAY ON**

**Mobile: 07751 830716**

**Tel: 01296 688981**

6 Cotes Way, Wing, LU7 0RB

*HPC Registered  
CHIROPODIST & PODIATRIST*



*(Also Central Luton surgery - open 6 days)*

*Stuart Ball  
Ceramic Tiler  
Specialist  
at all aspects of  
Wall & Floor Tiling  
Over 33 yrs Experience  
01525 229381*



## Stephen D. Janes

*(Established in 1982)*

**CARPENTRY, JOINERY  
KITCHENS FITTED  
PROPERTY MAINTENANCE  
TELEPHONE: 01525 220649**



**01582 477568**

**07949 118011**

**Fencing Panels • Blockpaving • Paths  
Shingle Drives • Slabs • Paving  
Steps • Gardenwalls • New Patios  
Relaying • Soak Aways • Drainage  
Free estimates or advice • References  
[www.gandjgroundwork.co.uk](http://www.gandjgroundwork.co.uk)**

## Neil Hodson Associates

*BUILDING DESIGN  
STRUCTURAL ENGINEERING*

**PROFESSIONAL BUILDING DESIGN,  
ADVISORY AND DRAWING SERVICES**

From plans for domestic extensions  
to multi-storey offices, commercial  
buildings and factories.

Structural surveys, site surveying,  
advice on building defects and  
Feasibility Studies

Planning Applications and Building  
Regulation Consents obtained.

**24 HIGH ST TRING  
Tel 01442 890894 OR  
Edlesborough 222462**

# J Able bathrooms

**New Showroom NOW Open in Edlesborough**

### DESIGN

Free CAD design of your bathroom, This will help you a photo realistic finished plan of your design.

### SUPPLY

Come and browse our display suites, This will help you decide on the perfect bathroom for your needs.

### INSTALLATION

Our installations are of the highest standards!  
We take pride in making you delighted with the finished result.

We have suites in a wide range of styles to suit your budget.  
Drop in or ring to make an evening appointment at the showroom  
or a home visit at your convenience.

#### Opening Times

Monday. 9am-5pm  
Tuesday. 9am-1pm  
Wednesday. Closed  
Thursday. 9am-1pm  
Friday. 9am-5pm  
Saturday. 9am-1pm  
Sunday. Closed

**T: 01525 220043 M: 07891 449077**

3 Summerleys, Edlesborough, Buckinghamshire, LU6 2HR  
W: [www.jablebathrooms.co.uk](http://www.jablebathrooms.co.uk) E: [ableplumbing@hotmail.co.uk](mailto:ableplumbing@hotmail.co.uk)



# EDESBOROUGH TENNIS CLUB

Website by Jupiterwill

[www.etctennis.org](http://www.etctennis.org)

Play tennis   Have fun   Socialise   Feel good   Join our club

Join via the website, or call Iona McLean-Hall on 01525 220562 for details

## Edlesborough School



In January, the whole of Edlesborough School took part in the RSPB Big Schools' Birdwatch. This event happens every year and families can take part at home. On the day, each class put on their wellies, grabbed their binoculars and clipboards and went outside to the school field and pond area. Our task was to watch the birds for one hour. We recorded

the highest number of each type of bird we saw at the same time, although it had to land on the ground. We did this in two 30 minute sessions and recorded our sightings on a sheet. It was very challenging trying to identify the birds, even though we had charts with pictures on. Sadly it was also very windy and this meant that we did not see many birds.

After we had completed the hour, we went back indoors and collated our results. These were then inputted onto the RSPB website. We were able to look at results from all the other schools in the country and compared them to ours. Over 60, 000 birds have been spotted so far and nearly 30,000 people have taken part! It was great fun and we all feel proud to have taken part. The highest number of birds we saw were blackbirds, a total of 12.

✍ Malachy Foley and Ralph Field



# ILLUSTRIA

## Kennels & Kathotel

Offering your pet a fully licensed Dog and Cat boarding service.

Purpose built Dog kennels

Individual Cat chalets with outdoor exercise runs

All in pleasant country surroundings

**01582 ~ 665343**



ILLUSTRIA  
Springfield Road  
Wellhead  
NR Dunstable Beds  
LU6 2JT



Proprietors

*Mick, Denise and Michele Garrod*



## Live a healthy & active life

Free 10 minute advice chats with our Chartered Physiotherapists & HCPC Registered Podiatrists

PHYSIOTHERAPY  
PODIATRY &  
CHIROPODY  
PILATES  
ACUPUNCTURE  
SPORTS INJURIES  
MASSAGE  
WOMEN'S HEALTH  
& PREGNANCY  
CARE

**St. Judes**

physiotherapy, health and well being

01525

377751

enquiries@stjudesclinic.com  
www.stjudesclinic.com

## N.D.S.

**General Building & Plumbing**  
(25 years experience)

- Roofing; Installer of UPVC guttering, soffits & fascia boards
- Kitchens & Bathrooms fitted
- Property Maintenance
- Fencing • Patios & Block Paving
- Gazebos • Garden Structures

**Tel: 01525 221470**

**Mobile: 07946 626564**

**FREE ESTIMATES**

...

**ALL WORK CONSIDERED  
NO JOB TOO SMALL**

For a top quality  
decorating job call

# Marc Flack

**01525 223166**

Trading locally for 10 years  
References are available



# TIME TO MOVE?

**Don't be alarmed,  
we're here to help!**

*Established in 1999*

e: [info@plummproperty.co.uk](mailto:info@plummproperty.co.uk)

## Five Good Reasons to use **Plumm Property**

**P**private Offices - direct savings to you on fees

**L**ocal Knowledge - from our highly experienced team

**U**nrestrictive contracts - no lengthy tie-in periods

**M**arketing to outside area - attracting London buyers

**M**anaging all your needs with a 1st class professional service

**From Offer through to Completion of Sale**



01296 660230

[www.plummproperty.co.uk](http://www.plummproperty.co.uk)

# Succulent apricot and cumin pork shoulder

There are few traditions I love more than a meltingly soft, slow-cooked roast. Whether it's a shoulder of lamb, slathered with olive oil and its skin pierced with garlic and rosemary or a shoulder of pork, simply seasoned and covered with foil, and left to fall off the bone for 3 hours in the oven.

Pork shoulder lends itself particularly well to slow roasting, its natural fattiness ensuring that the meat stays moist. It also means that pork shoulder is almost foolproof to cook and impossible to mess up. Plus pork remains good value from butchers and supermarkets alike - and there are always leftovers to take into the rest of the week too.

My Weekend Kitchen programme on BBC Three Counties Radio features recipes every week which pull together all these key elements - very tasty food, easily cooked and suitable for tight budgets. This lovely take on a pork roast was created by one of our regular guests, Theo Michaels, who you may well have seen on Masterchef in 2014. He stuffs his pork shoulder with a fruity sweet filling which makes the roast extremely moreish.

## Serves 4 - 6

1 kilo pork shoulder, de-boned  
1 large onion, thinly sliced  
Several cloves of garlic, still in their skin

## Stuffing:

2 ripe apricots, chopped  
5 dried apricots, chopped  
2 cloves garlic, chopped  
Large pinch of rosemary leaves, chopped  
4 sage leaves  
Salt and pepper

## Glaze:

A squeeze of lemon  
A pinch of ground cumin  
Olive oil  
4 tbsp apricot jam  
A squeeze of honey  
Cornflour, for the sauce

## Method:

Pop the sliced onion and garlic cloves into a roasting tin.

Unroll your deboned pork shoulder. Mix up the stuffing ingredients and layer the mixture on to the pork. Roll the pork back up together and tie it up with some string. Lay the pork, cut side down, in a roasting tin and add 125ml of water. Cover it tightly and roast at 170C/ 150C fan/ just below gas mark 4.

Roast it for around 2 1/2 hours. It will be ready when the meat is meltingly soft.

Take it out of the oven and leave it rest on a board for 20 minutes. While it's resting, sieve the juices from the pan, pop them on the hob, bring them to a simmer then add a little cornflour. Keep stirring well and leave the sauce cook and thicken.

Mix together the glaze ingredients, pour them over the rested pork then pop it back in a hot oven (230C/ 200C fan/ Gas Mark 8) for 10 minutes to crisp up and go golden.

Serve with roast potatoes, your favourite vegetables, the cloves of garlic from the pan and the lovely gravy.

---

*Hear Nick Coffey's Weekend Kitchen every Sunday morning on BBC Three Counties radio at 11am. You can also join Nick every weekday afternoon at midday for brilliant local guests with great stories to tell and all the music you want for your early afternoon.*



St Mary's Eaton Bray



# Spring Sale

**Saturday 23 April 2016**

**12 noon - 3pm**

**Eaton Bray Village Hall**

Church Lane, Eaton Bray, LU6 2DJ

Book a table for just £10 - crafts or bric-a-brac.

Cakes, books, raffle and delicious lunchtime refreshments available, including our legendary bacon butties!

**FREE ADMISSION**

Contact Barbara Morton on 01525 852368 or email at [barbara.morton1@gmail.com](mailto:barbara.morton1@gmail.com) for more information



*Charles Hill Garden Services Ltd*

*Design - Build*

*Est: 2006*

A professional company working with all your gardening requirements from design to complete landscape.

*NCH in Horticulture*

*City & Guilds in Garden Design*

*Call Charles to discuss your garden plans today.*

*Mobile: 07773723236*

*Office: 01525 242065*

[charles@charleshillgardenservices.co.uk](mailto:charles@charleshillgardenservices.co.uk)  
[accounts@charleshillgardenservices.co.uk](mailto:accounts@charleshillgardenservices.co.uk)  
[www.charleshillgardenservices.co.uk](http://www.charleshillgardenservices.co.uk)

**Messy Church**

Fun, food, crafts, games and much more  
**FREE OF CHARGE**

**Last Sunday of the month**  
**3-5pm**  
**at The Salvation Army**  
**Booth Place, Eaton Bray**

For more details please contact:  
**Hilary Chadwick (Envoy) 07932 057490**  
[hilary.chadwick@salvationarmy.org.uk](mailto:hilary.chadwick@salvationarmy.org.uk)

# RESIDENTS of NORTHALL

## Save The Date!

### Sunday 12<sup>th</sup> June 2016



**Northall Village Trust**  
(Northall Village Hall)



**AGM 2016** and  
**Family Fun Day**

**Celebrating The Queen's 90<sup>th</sup> Birthday!!**  
(Further Details to Follow in MAY Edition of FOCUS)



## Eaton Bray Methodist Church

Our Cafe Worship on the second Sunday in January was taken by the Rev Andy Melvin, who reminded us that our Lord is the God of Fresh Starts and led us in an inspiring reappraisal of ourselves, our potential for change and the ways we may grow in faith. The following week Melvyn Corby challenged us to identify the gifts that God has given us and how we can best use them to change and

build up his church. Our Covenant Service and Communion took place on the fourth Sunday in January, led as always by Rev Nigel Wright. Illustrating his point with a graphic scientific demonstration, he urged us to put in place the key priorities for a healthy spiritual life.

### Dates for your Diary:

#### Café Community

Saturday 12th March 2016, 11am – 1pm.

We will be delighted to see you if you come to join us for a cup of tea or coffee and/or a light lunch.

#### An Evening of Music

Saturday 30th April 2016 at 7.30pm.

To celebrate the restoration of our organ. There will be an organ recital by Stephen Turner and choral singing by Dunstable U3A Choir.



*Stanbridge Logs*

**SEASONED  
HARDWOOD**

**LOGS**

**CONTACT**

**07835175402**

**OR**

**stanbridgelogs@gmail.com**

*Stanbridge Logs*

**Violin, Viola, Piano &  
Music Theory Lessons  
in Cheddington**

**Vaughan Jones G.B.S.M.,  
A.R.C.M.** is a friendly and experienced teacher, who enjoys working with both children and adults, focussing on general musicianship as well as a tension free approach to playing.

Vaughan teaches from his home in Cheddington and has slots available on weekdays & weekends.

- All ages welcome from 7 upwards
- Violin and viola lessons from beginner up to Grade 8 and diploma standard
- Piano lessons from beginner up to Grade 5 standard
- Theory can also be taught up to Grade 8 standard
- In addition, Vaughan can support students preparing for their ABRSM aural tests up to Grade 8
- Lessons are £10 for 20 minutes, £15 for 30 minutes, £20 for 45 minutes or £25 for a full hour

If you're interested in starting lessons and would like more information, feel free to give Vaughan a call on **07870 171194** or e-mail him on: [info@manorhousemusic.co.uk](mailto:info@manorhousemusic.co.uk)

**ADRIENNE'S  
PRIVATE HIRE**

Call for a **FREE** quotation  
*Book early to avoid disappointment*  
*Very competitive prices*

Airport Transfers  
& Private Hire

**07980 039715**

*Our executive Cars, 6 seater Minibuses and lady driver are all available*



A 'home-from-home' childcare provider dedicated to enriching children's lives through learning and play

**pacey** Member

Ofsted Registered Childminder  
Eaton Bray

Contact Tania Tel: 07818 088 481  
[childmindingeb@yahoo.co.uk](mailto:childmindingeb@yahoo.co.uk)

**GRASS ROOTS  
GARDEN MAINTENANCE**

**TREE SURGERY, HEDGE PRUNING,  
SELECTION SUPPLY AND PLANTING OF  
TREES, SHRUBS AND HEDGES.  
REGULAR MAINTENANCE/ONE-OFF JOBS**  
(Fully Insured)

**Brian McMahon NCH (Arb)**  
**01525 221960**



**Edlesborough  
Flowers**

Flowers, Gifts, Jewellery  
& More...

2 High Street,  
Edlesborough,  
LU6 2HS  
Tel: 01525 221920



# EDaN BEAUTIFICATION TEAM



**SELLERS:** from 8.30 am  
**£10 PER CAR**

Vehicular access is from  
Pebblemoor : LU6 2HZ  
2 met. height restriction  
No trucks or large vans!

**NO NEED TO BOOK**

Any queries? - contact  
Chris: Tel. 01525 220739  
[chris@brooklyns.org.uk](mailto:chris@brooklyns.org.uk)



**BUYERS:** 9.00 am -12.00  
**FREE CAR PARKING ON THE  
GREEN FROM PEBBLEMOOR**

We'll be serving delicious  
refreshments from the  
BBQ – arrive hungry.....  
Great bacon butties, hot  
dogs, giant muffins, etc.

Don't miss the bargains  
on Mayday morning!

**MAYDAY MONDAY : 2nd MAY**  
**EDLESBOROUGH VILLAGE GREEN**

# OPEN GARDENS FESTIVAL 24 July 2016 Wanted - Gardens

In Eaton Bray, Edlesborough or Northall  
Would you be willing to open your garden for the day to  
help raise money for charity?  
If so, or you would like more information, please contact  
Kay Griffiths on 222849 or Gordon Gray on 220136.

# PURPLE DAY

For Epilepsy  
March 26

# Photo Shoot

**The Coffee Tavern, Eaton Bray**

**Starting 2pm**

**Everyone is welcome - come and join in**

**Dress up in purple**

**Help spread Epilepsy Awareness**



Cassidy Megan,  
Founder of Purple Day.

Photo: Cassidy Megan - photo credit Lindsey Duncan, Eddie Photography



## Come for Coffee at St Mary's

For a warm welcome and  
a cheering cuppa  
on the first Saturday  
each month in  
St Mary's Church  
Eaton Bray  
10.00am - midday

Next coffee mornings:  
Saturday 5<sup>th</sup> March  
Saturday 2<sup>nd</sup> April



# Local Hero Dick Whittington Saves Eaton Bray from the Evil Queen Rat found Lurking in Edlesborough Waterfall!



A mist of smoke filled the stage as the Queen Rat vowed to create misery and upset amongst the people of Eaton Bray and the surrounding villages... but luckily for them a tutu wearing fairy complete with Doc Martins appeared, and assured them it was just the baddie throwing her weight around in this year's panto, and so she went on to introduce the village hero Dick Whittington and his faithful companion Fluffy who were on their way to London to seek their fortune. Dick's journey wasn't quite as straightforward as he hoped as after ending up in Eaton Bray, he soon realised his rather eccentric mother Winifred had decided to follow him hoping to find love along the way, and of course there were the rats, a jaffa cake loving weasel and a boat trip to china all in his way. As with all good hero stories, I am pleased to say that Dick ended up not only in London but indeed Mayor of London and he even got to marry the girl of his dreams... oh yes he did!

This is Curtain Call's second year in Eaton Bray after being asked to bring the traditional panto back to the village, and the group were delighted to welcome new members from the local villages, some of which included cast from the previous Edlesbray players. It was fantastic to have some new faces to act alongside, and what fun we had doing so. Once again the script was written by local funny man Gavyn Lugsden (also founder and chair of Curtain Call) and the audience were kept entertained by plenty of slapstick





comedy, toe tapping songs, a light saber fight scene and even some fireworks! As an amateur dramatic group we meet once a week on a Monday evening in Eaton Bray village hall and aim to put on two shows/plays plus a pantomime a year. The group are still in discussion about our next performance but we are delighted to confirm next years panto will be Aladdin. We have just held our AGM and after restructuring the committee we are now on the look out for new members to come and join us. We welcome acting of all abilities as well as anyone who has an interest in the backstage side of things from stage management to props. We would really love for you to come along and join in the fun! You can find out more on our Facebook page <https://www.facebook.com/curtaincallLB> or follow us on twitter @CurtainCall\_EB

*Cast of Dick Whittington: Laura Edwards, Elle Laird, Malcom Calloway, Holly Potton, Louise Champman,*

*Ethan Perry, Priscilla Dorrance, Peter Hossack, Carole Pollard, Henry Dorrance, Izzy Dorrance, Charlotte Meredith, Gemma Sage, Daisy Potton, Jamie Potton.*

*With thanks to Bekka Prideaux, Alex Ralls, Aaron Gauntlett, Helen Potton, Jasmine Zaldua and Reuben Zaldua for their support and help.*

## Looking to visit the USA...

For help with creating the best itinerary for you please call or email us

- We work with specialist companies to tailor-make the holiday to your requirements
- Friendly, honest advice from an independent travel agency
- Extensive experience to arrange every detail
- Using fully bonded tour operators
- No booking fees



Travel Impressions

01442 890265

[enquiries@travelimpressions.co.uk](mailto:enquiries@travelimpressions.co.uk)  
[www.travelimpressions.co.uk](http://www.travelimpressions.co.uk)

Suite 4, George House, 64 High Street, Tring, Herts. HP23 4AF



## HIGHLIGHTS OF THE MINUTES

A full/detailed copy of the minutes for Eaton Bray Parish Council can be found on our website.  
A hard copy of the minutes can also be viewed on the Parish Council's notice board at The Coffee Tavern.

### Meeting of Eaton Bray Parish Council (PC)

Held on Monday 4th January 2016 from 7:30pm at the Coffee Tavern

#### Central Beds Council (CBC) – Councillor Ken Janes

Website: [www.centralbedfordshire.gov.uk](http://www.centralbedfordshire.gov.uk) - Customer Services: 0300 300 8302 /  
Email: [customers@centralbedfordshire.gov.uk](mailto:customers@centralbedfordshire.gov.uk)

- Commercial Property, Totternhoe Road: an enforcement notice has been raised, planning application to be put in respect to the new entrance being built on the Eaton Bray Road/Totternhoe Road junction. Awaiting details.
- The speed limit at Lancot Hill (road leading into Dunstable from Totternhoe) is being changed; the 30mph limit being extended to further down the hill.

#### Bedfordshire Police

- There was no representative from CBC in attendance. The Council will write to the local police representative expressing disappointment with the lack of attendance by police representatives at parish meetings.

News from the team: If you wish to contact your Local Policing Team then please call 01582473411, **Non-emergency call 101 / All emergencies 999** / email [LPT.LeightonBuzzardLinslade&Rural@bedfordshire.pnn.police.uk](mailto:LPT.LeightonBuzzardLinslade&Rural@bedfordshire.pnn.police.uk)

#### A Big Thank You

The Council would like to take this opportunity to thank the Councillors involved in the organisation of the Christmas events and all the residents of the parish for their great support. The Council is pleased to announce that the donations given by those attending the carol singing and from within the White Horse Pub totalled £197.09. The money has been donated to the Kids Out Charity, a charity that provides fun and positive experiences for children throughout the UK who are living in refuge, economic hardship or with other acute disadvantages (for more information visit their website [www.kidsout.org.uk](http://www.kidsout.org.uk)). The charity would like to pass on their thanks for such kind generosity.

#### Vacancy - Parish Councillor:

There is a vacancy for a Parish Councillor on Eaton Bray Parish Council. If you are interested in joining the council please email the Parish Clerk or visit our website for more details.

CRIME REPORT – DECEMBER 2015

Crime Type	01/12/14-31/12/14	01/12/15-31/12/15
Violence against the Person	0	1
Sexual Offences	0	0
Domestic Burglary	0	0
Burglary Other	0	1
Vehicle Crime	0	0
Other Theft	0	0
Criminal Damage	0	0
Drugs	0	0
<b>Total</b>	<b>0</b>	<b>2</b>

Anti-Social Behaviour	01/12/14-31/12/14	01/12/15-31/12/15
Anti-Social Behaviour	1	4
2 x Animals running around without any leads or owners		
2 x Abandoned Vehicle (not abandoned as belongs to an owner in Eaton Bray)		



## **NEAT - village clean up day/bulb planting**

The Council are looking at putting on three events during the year (Spring/Summer/Autumn), involving parishioners, during which those with properties in the village are asked to spend as much time as they can afford to just tidying up the village, sweeping up the pavement in the front of their property and helping in a small way to overall improve the appearance of the village. This will also include bulb planting in the public areas, planters, weeding etc. The first date proposed is Saturday 19th March 2016, with further dates to be put forward at a later date. See the Council facebook page/website for further details.

## **HGV 7.5 Weight Restrictions/Road Signage**

Signage within the Bedfordshire section of the proposed roads covered by the HGV restrictions are now erected, waiting for Bucks CC to finalise the remaining three signs on the county boundaries. Once completed the HGV restrictions will be implemented. Once in force, details regarding restrictions/how to report offenders will be on the Eaton Bray Facebook/forum/website pages.

## **Problem Car Parking/Tractors**

It has been brought to the Council's attention the problem of poorly parked cars within the parish - parking on public footpaths, blocking access for pedestrians and causing obstruction. Parking on the pavements and preventing use of them is a highways offence and enforceable with a fixed penalty notice. It is also hazardous to those who have to walk out onto the road to pass the vehicle. The Council request that vehicle owners do not park their vehicles on the pavements. The Police will be informed and enforcement action taken. In addition, it has been noted, that there have been tractors' causing obstruction to pedestrian/road users in the parish, with some driving through the village at considerable speed. The council ask that all road users please reduce their speed whilst driving through the parish and when parking to not block public footpaths/pedestrian access.

## **Finance: Budget/Precept 2016-2017**

The council looked through the spend for the year and proposed spend for the following financial year; it was agreed to increase the council's yearly precept by £4,000 to £83,000.



## **Speedwatch**

Speedwatch are looking for volunteers to help with the speed checks. If you would like to get involved in trying to slow down traffic in the village and are concerned about road safety please contact Cllr. Mark Tomkins, on 07819-753878 or email [councillormarktomkins@gmail.com](mailto:councillormarktomkins@gmail.com) expressing your interest.

## **Bedfordshire Flag**

Resident's may have become aware of a new flag flying at The Coffee Tavern; this flag is the official Bedfordshire Flag. The flag is flown to promote pride and recognition for the county of Bedfordshire.

The flag is made up of three main elements which contribute to the overall design of the flag:

- i. The red and yellow quadrants which come from the coat of arms of the Beauchamp family, who were a prominent family in the county after the Norman

conquest. They also constructed Bedford Castle and were granted a barony at Bedford.

- ii. The vertical black stripe which takes the center of the flag containing three shells, or escallops. This comes from the coat of arms of the Duke of Bedford.
- iii. The horizontal blue and white wavy lines represent the river Great Ouse which passes through the county.



### **Bedfordshire Day: 28th November**

In addition to the flying of the Bedfordshire flag, there is now an official Bedfordshire day, celebrated annually on the 28th November; the anniversary of the birth of a local figure, John Bunyan. John Bunyan was an English writer and Baptist preacher, educated at Bedford School. He is best remembered for *The Pilgrim's Progress*, other authors influenced by John Bunyan include Nathaniel Hawthorne, Herman Melville, Charles Dickens, Louisa May Alcott and George Bernard Shaw. A museum primarily dedicated to the life, times and works of John Bunyan is located in Mill Street Bedford, Bedfordshire. For more information on Bedfordshire Day, visit The Friends of Bedfordshire website; link: <http://www.friendsofbedfordshire.org.uk/>

### **Future Eaton Bray Parish Council Meeting Dates**

Monday 7th March 2016; from 7:30pm at The Coffee Tavern (1st floor)

**Parish Council Website:** [www.ebpc.co.uk](http://www.ebpc.co.uk)



Heidi Head, Parish Clerk & RFO

Email: [clerk@ebpc.co.uk](mailto:clerk@ebpc.co.uk) - Telephone/Fax: 01525 221464 - Website: [www.ebpc.co.uk](http://www.ebpc.co.uk)

Office Hours: Tuesday/Thursday/Friday 09:30-13:30hrs [messages can be left on answerphone]

Follow Eaton Bray Parish Council on Facebook and Twitter

Keep up to date with what is going on in the parish

## **GORDON'S CHRISTMAS PUZZLE 2015**

### **Another record breaking year**

Almost 40% of the entries to this year's Puzzle gave perfect solutions and I am delighted that this year's chosen charities – Christopher's Smile, Grove House Day Hospice, Motor Neurone Disease Association, The Meningitis Research Foundation and St Mary's Church - will share £6,300 – the most the Puzzle has raised previously was £6,000, in 2013. This brings the total raised by the Puzzle to £69,700. On behalf of all the charities supported "Thank you for your generosity" especially to the 24 of you with an 'LU6' postcode.

On Sunday 2nd February a draw was made to select winners of this year's Christmas Puzzle. Winning £30, and drawn from the 119 entries that scored full marks were: Peter Holdcroft, Barry Irwin and Graham & Rebecca Leese. Drawn from all 314 entries and winning £10 were: The Beaty Family, Elizabeth Booth, Trevor Hartley, Val & Sue Knotek and Jennifer Powell. Unfortunately none of this year's winners are local.





## EDaN Traffic Management Team

The EDaN Traffic Management Team (TMT) was started by the Edlesborough Parish Council through the Parish Plan. Their main objectives were:

- HGV Traffic through the villages (waste lorries)
- Speeding in the villages
- Change the A4146 to a B Classified Road

The TMT has been working very hard over the last 8 years to work towards and achieve its goals, some are easier than others. When we first started out we thought that the hardest goal was the B road classification but recent events have changed that.

This brings me on to the new A5 link road, we have been aware of this project since the very start and we attended the very first public consultation about the road. We broadly supported the building of the road but lodged an objection to the A5 being de-trunked because they would not consider the de-trunking of the A4146 at the same time. During the planning process we were asked to withdraw this objection but we refused unless there was due consideration to and the implementation of de-trunking of the A4146 through our villages.

We believe that the funding of this road is coming from the development of the local area and not the government's purse. To find out more information on this road go to [www.highways.gov.uk/a5m1link](http://www.highways.gov.uk/a5m1link)

As it stands at this moment we believe that the new M1 link will provide a new viable route for the HGV traffic to travel on. This route can be used when travelling from Milton Keynes to London and the waste lorries can travel down the Leighton Buzzard bypass and then on to the new M1 link and on to the M1 and into London. This is also backed up by the new 7.5-ton weight limit in Eaton Bray and Tottenhoe.

So where are we today, With the new road being built the TMT saw a once in a lifetime opportunity to solve our lorry problems, to do this we have been working very hard, we have managed to get representatives from the three counties Hertfordshire, Bedfordshire and Buckinghamshire to work together on a plan to help resolve our problem. This plan is ongoing and we are working with Buck's County Council (BCC) to get the best result for our three villages. The proposal that is being talked about at the moment is to place a 7.5-ton weight limit on the bridge at Water End with signage around the local area and on the M1 along with reclassification of the road calling it the B440. We are also pushing for a weight restriction at the Leighton Buzzard end of the road and in Ivinghoe.

Then we look in to the future, once we have removed the lorries from our roads and obtained a B road we can look into traffic calming measures and continue to monitor speed and provide a safe road network within our villages.

When we started out on this project 8 years ago we did not believe that we could achieve the B road status but it is now looking like we will so let's hope that things continue to move in the direction we are hoping for.

**Can you help?** The Traffic Management Team are always looking for volunteers to help man a portable speed camera and volunteers to monitor traffic volume and HGV's using the villages roads and also help promote a safer road network in our villages. If you would like to help please email: [info@edanproject.com](mailto:info@edanproject.com)

✉ **Ivor Thorne, Chairman EDaN Traffic Management Team**

# Edlesbray Leisure Fellowship (ELF)

The Group wishes everyone a Happy New Year and hope that you all enjoyed Christmas and New Year activities whatever your plans were.

2016 seems to be hurrying by but a few spring flowers are waking up and showing us some colours and new growth. Enjoy them.

Easter will soon be here, Pancake Day and Valentine's Day will be memories.

The end of 2015 activities went well for the group.

On November 26th our mince pie/sherry meeting was a happy one, and well attended. Thanks to Alan and Val for arranging this.

On December 17th our Christmas lunch outing was to the Half Way House in Dunstable. The members present enjoyed this new venue, especially those who had never been there before. Thanks go to Val for arranging this meal.

November 23rd, in fine weather, saw the walking group, led by Vic, start in Aldbury. They passed by The Valiant Trooper Pub, continued to Tring Railway Station, the Grand Union Canal, Marshcroft Lane and across Stocks Golf Course and returned to the start. They Covered 41/2 miles. Thanks go to Vic for this walk.

Our meeting at The Coffee Tavern on November 26th was a happy one and a few suggestions for 2016 activities were discussed.

2016 began with a meeting on January 28th in the Coffee Tavern. Ideas for outings were talked about in more detail and members who were willing to arrange them were noted.

Details will be decided when available and displayed in the North Porch of Eaton Bray Church.

The first walk of 2016 was led by Brian W., in good weather, on January 25th. The group travelled to Woburn and walked around parts of the Estate covering around 5 miles. Thanks go to Brian W. for this walk. The group would be very pleased to welcome new persons to join them. The walks are never too difficult and at a

leisurely pace, usually between 31/2 - 5 miles in fairly local areas.

Our first 2016 lunch outing was on February 11th at the Bridgewater Arms. A report will be in the April Focus as will that of the walk on February 22nd.

There is NO meeting in March.

Please come and join In the E.L.F. Group activities. We are a happy friendly group of people and you would be made welcome.

All notices regarding arrangements are displayed in the North Porch of the Eaton Bray Church.

## March Dates

Monday 28th

Walk from Eaton Bray church 9.30a.m.

## St Mary's 100 Club

Congratulations to the following winners:

February 2016

1st prize – Yvonne Ranson

2nd prize – Robert Dickson

3rd prize – Robert Dickson

If you would like to join the 100 Club

please collect a form from

[www.stmaryseatonbray.org.uk/](http://www.stmaryseatonbray.org.uk/)

Groups/100-club or from St Mary's Church, Eaton Bray.



## Dunstable & District Local History Society

Tuesday 8 March, 7.45pm

### The History of Money

Guineas, groats, pounds, pence...these tokens have evolved to help people earn and pay for their goods. Richard Selby tells the story. His talk follows the society's annual meeting.

Methodist Church Hall, Dunstable  
Visitors always welcome £2

Make your house a home with blinds and awnings from

**VANSAR  
BLINDS**



[www.vansarblinds.co.uk](http://www.vansarblinds.co.uk)

- Free No Obligation Measuring And Quotations
- All Blinds Made To Measure
- Choose In The Comfort Of Your Own Home Or Workplace
- Family Run Business
- Large Range Of Quality, Affordable Fabrics And Colours To Choose From



Call: 01525 220477 or 01582 699565 E: [sales@vansarblinds.co.uk](mailto:sales@vansarblinds.co.uk)

## Financially Prudent (IFA) Ltd

23 The Green, Edlesborough, LU6 2JF

Your local IFA for impartial Personal or Corporate advice on:

- Mortgages
- Pensions & Annuities
- Insurance
- Savings & Investments

Call Paul Pearce on 01525 220480 or email [paul@finpru.com](mailto:paul@finpru.com) for a no obligation initial discussion



Financially Prudent (IFA) Ltd is authorised and regulated by the Financial Conduct Authority

## J.G.S. Metalwork & Son

**Specialists in Gates  
& Gate Automation**

Access Control • Security Grilles • Railings  
Balconies • Stairwells

[www.jgsmetalwork.co.uk](http://www.jgsmetalwork.co.uk)

Call in to discuss your ideas

High Street, Edlesborough LU6 2HS

Tel: 01525 220360 Fax: 01525 222786

**Spinney Landscapes**  
& Gardening Services

*All Aspects of Grounds Maintenance*

Weed Control • Driveways & Patios  
Lawn Care & Scarifying • Fencing  
Turving • Tree Work  
Snow Cleaning & Gritting

Tel: 01582 872084 Mob: 07876 500292

Email: [chambo.1628@btinternet.com](mailto:chambo.1628@btinternet.com)

# Dagnall Church of England School



A Buckinghamshire co-educational school

For 4-7 year olds



Dagnall Church of England School offers small classes, an exciting curriculum, excellent care and good links with the local community



Ofsted 2011  
"Pupils are confident,  
very happy at school  
and curious to learn."



Tel: 01442 842473  
[www.dagnall.bucks.sch.uk](http://www.dagnall.bucks.sch.uk)



E-mail:  
[office@dagnall.bucks.sch.uk](mailto:office@dagnall.bucks.sch.uk)



David Brown

## Window Cleaning

Quality Reliable Service.

Regular, Occasional or  
Single Visits.

Friendly Free Estimates.

Facias, Guttering & Conservatories.

External Cleaning & Maintenance.

Fully Insured.

**Phone 01582 472113**

**Mobile 07534 837073**

# D & E HINES

## High-Class Butchers

Quality Beef, Pork & Lamb

Grade A Poultry

BBQ & Sausage Speciality

Renowned for 'Bunkers Sausages'

Telephone: 01525 220413

98 High Street, Eaton Bray



GENERALMECHANICALSERVICESLTD

VEHICLE SERVICING AND REPAIRS



**MOTs • MOT REPAIRS • SERVICING  
DIAGNOSTICS • TRACKING • AIR CONDITIONING  
TYRES • CAMBELTS • COLLECTION & DELIVERY  
WELDING & FABRICATION • BATTERIES**

**All vehicles - all mechanical work!**

**1 HONEYWICK LANE, EATON BRAY, LU6 2BJ**

**reception@general-mechanical-services.co.uk**

**www.general-mechanical-services.co.uk**



**01525 222876**



Base of trust for motorists.



**SECURITY  
SYSTEMS  
LIMITED**

## MJ Security Systems

**Contact Us For More Information**

Unit 4, Arianne Business Centre,  
Blackburn Road,  
Townsend Industrial Estate,  
Houghton Regis,  
Bedfordshire,  
LU5 5DZ

**Please call for a free quotation**

**T: 0800 0856126**

**E: [info@mjsecurity.co.uk](mailto:info@mjsecurity.co.uk)**

**W: [www.mjsecurity.co.uk](http://www.mjsecurity.co.uk)**

# Protecting what's important

## MJ Security Systems Ltd



**FROM ONLY  
£439.95+VAT  
Products and  
Installation**



**Kit includes:**  
1 x Wireless Door Contact, 2 x Wireless  
P.I.R., 1 x Wireless Sounder, 2 x Remote Set  
and Unset Fobs.

**Stylish • Wireless • Secure**

**NSI**  
  
**NACOSS  
GOLD**

**We also specialise in:**

- IP Cameras
- Intruder Alarms
- Access Control
- CCTV & Monitoring
- Door Entry
- Covert Cameras
- Security Lighting

# M . P . S

Maintenance & Property Services

- KITCHENS AND BATHROOMS
- PAINTING AND DECORATING
- PROPERTY RENOVATIONS
- PLASTERBOARDING
- FENCING

FREE ESTIMATES  
NO CALL OUT CHARGE  
NO JOB TO SMALL  
LOCAL

Contact:- Julian

**07958 306301**

E-mail – [mps@mustoe.co.uk](mailto:mps@mustoe.co.uk)  
[www.mustoe.co.uk](http://www.mustoe.co.uk)

# Leighton Aerials

Established 1970

For all your aerial  
and satellite needs  
call Colin on

**01525 374742**



# Edlesborough School & Pre-School



*Pupils' behaviour is outstanding...*

*The environment for learning is exciting and stimulating...*

*A real strength of the school is pupils' attitude to their learning .*

*Ofsted 2013*

For more information about our School, Pre-School and Before and After School facilities, visit our website at [www.edlesborough.bucks.sch.uk](http://www.edlesborough.bucks.sch.uk)

Please contact the school on 01525 220431 to arrange a visit.

## S M Reilly & Son Ltd

General Builders & Contractors



Turning Your House into  
a Home Since 1987

All aspects of the building trade undertaken

- \*Extensions\*Hard Landscaping\*
- \*Windows, Doors & Conservatories\*
- \*Fitting of Aluminium Bi-fold Doors\*
- \*Kitchen & Bathrooms\*Drives\*
- \*Loft Conversions\*

**01525 221740 07970 637511**



**JAMES FALCON-CROSS**

## LANDSCAPING AND OUTDOOR LIVING DESIGN

**ALL ASPECTS OF LANDSCAPING  
UNDERTAKEN INCLUDING  
FENCING, TURFING AND PATIOS  
TIMBER STRUCTURES  
DESIGNED AND BUILT**

**VEGETABLE AND HERB GARDENS**

**01442 843258 / 07769 901325**

**ONECROSSFALCON@GMAIL.COM**

## eww

E W Wallace & Co  
Chartered Accountants  
Tax Consultants  
Business Advisors

Small business specialists serving  
Beds, Bucks & Herts

- Annual accounts
- Tax returns
- Self-employed
- Limited companies
- Small business specialist
- Sage Accounts expertise
- Prompt, personal service
- Value-for-money fees
- Free initial consultation

**01525 220826**

**www.ewwallace.co.uk**

# Eaton Bray Village Hall



- ❖ Equipped to support theatrical productions and film shows
- ❖ Large car park
- ❖ Large Kitchen with a six ring cooker, large refrigerator, hot trolley, crockery etc.
- ❖ 3 separate areas to hire to meet your needs and budget
- ❖ For more information and brochure please ring Norman on 07975 797202

- ❖ Superb venue for weddings
- ❖ Fantastic place for parties and dances
- ❖ A must for children's parties, can fit the bouncy castle inside if weather dictates!!!
- ❖ Keep fit groups
- ❖ Ideal for Club meetings or functions





# WAGGING

wonderful dog grooming

Here to take care of your mucky pup!

Your local dog grooming service in Eaton Bray

1-2-1 care for your dog

NO cages!

**07580 343396**

[www.waggingwonderful.co.uk](http://www.waggingwonderful.co.uk)

[info@waggingwonderful.co.uk](mailto:info@waggingwonderful.co.uk)

## James B Chadburn FBHI

Fine Antique clocks & Barometers

Specialist in repairs & restorations.

Valuations & clock finding service.

Advice & assistance on formation & disposal of private clock collections.

Quality clocks/barometers Bought & sold.



Telephone 01525 221165

Mobile 07790 000629

E-mail: [info@jameschadburn.com](mailto:info@jameschadburn.com)

# NG AUTOS



MAKING YOU AND YOUR CAR HAPPY

CAM BELTS • MOT'S • MOT REPAIRS • HEAD GASKETS  
AIR CONDITIONING • RECOVERY/BREAKDOWN  
DIAGNOSTICS SERVICING • BRAKES • SUSPENSION  
CLUTCHES • GEARBOXES • TYRES • WHEEL BALANCING  
WHEEL ALIGNMENT COLLECTION & DELIVERY

**CALL NICK OR GARY**

**01525 220850 OR 07972 198615**

**SPARROW HALL FARM, LEIGHTON ROAD,  
EDLESBOROUGH LU6 2ES**



Reception



Service Bays



MOT Station

## D.A. Windows Doors & Conservatories

23 Church Lane, Eaton Bray, LU6 2 DJ

Tel: 01525 221051 Mobile: 07807 798387  
email: mimcavinder@hotmail.com

AUTHORISED  
SWISH INSTALLER  
WITH OVER 20  
YEARS  
EXPERIENCE

Installation of PVCu windows, doors and conservatories  
Replacement glass units and window maintenance

QUALITY PRODUCTS - QUALITY WORKMANSHIP -  
REASONABLE PRICES



General building  
maintenance work  
also undertaken  
including:  
Facades and Soffits  
Gutters  
Fencing

Accredited Member of the  
Incorporation of Plastic  
Window Fabricators and  
Installers Limited



## The Gentleman Gardener

Let your local RHS qualified gardener make your garden beautiful, from simple garden maintenance to total redesign of your garden.

Please call Barry on  
**01525-222451 or**  
**07541196384**

to pop round for a free chat.



### C H BUILDERS

[cwhawkes@tiscali.co.uk](mailto:cwhawkes@tiscali.co.uk)

Tel: 07989 357231

Local builder with over 35 years experience in the trade, specialising in:

- Kitchen fitting and alterations
- Extensions
- Loft conversions
- Renovations

Recommendations available

Please contact Chris to discuss any requirements for a free quotation

## McTimoney CHIROPRACTIC



Margie Craib BSc BHSI DC AMC MMCA  
Human and Animal Treatments

Ashridge Farm, Ringshall, Berkhamsted, Herts HP4 1ND  
Telephone: (01442) 842729

General Chiropractic Council Registration No. 293

## CHIMNEY SWEEP

Local & Est. Brush n Vac  
Friendly, Clean and Efficient

Call **KEVIN HING** on

Tel: 01525 371592

Mob: 07940 528897

[www.khing.co.uk](http://www.khing.co.uk)

Member of NACS



Edlesborough Cricket Club will again be fielding two teams in the Four Counties Cricket League this year (Saturdays), together with a number of friendly matches throughout the year (mainly Sundays).

### Indoor nets

In preparation for the season indoor cricket nets have been organised – held on **THURSDAY evenings from 8-9pm at Dunstable Town Cricket Club.** Net dates are as follows:

- Thursday 10th March
- Thursday 17th March
- EASTER
- Thursday 31st March
- Thursday 7th April
- Thursday 14th April

The cost per session is £3 (£1 for Concessions - Under 16s, students, etc).

### Friday nights on The Green

And from FRIDAY 21st April the club will be holding free, weekly pre-season training sessions on The Green (mainly fielding drills), run by qualified coaches. More details to follow.

A warm welcome can be expected for all either at the indoor nets or Friday training sessions, irrespective of age or ability.

We look forward to seeing you!

For further information please contact Andy Tyne (Club Secretary) at [andy\\_tyne@yahoo.co.uk](mailto:andy_tyne@yahoo.co.uk)

### The Salvation Army, Booth Place, Eaton Bray Weekly Activities



#### Sunday

Footprints (Sunday School)	9.45-10.45am
Morning Worship	11am
Messy Church	3-5pm
<i>(Last Sunday of the month)</i>	
Songs of Praise	4pm
<i>(3rd Sunday of the month from May to Dec)</i>	

#### Tuesday

Coffee Morning	
<i>(Alternate weeks)</i>	10-11.30am
Music practices (all welcome)	7.30-9pm

#### Wednesday

Home League	2.30-3.30pm
<i>(Ladies Mtg but all welcome)</i>	
Champions Challenge Club <i>(term time)</i>	
<i>(Ages 5-10 years)</i>	5.45-6.45pm

#### Thursday

Parent and Toddler Group	
<i>(Term time)</i>	9.30-11.30am
Sewing & Craft Bees	
<i>(2nd Thursday of month)</i>	7.45 pm
Ladies Fellowship	
<i>(Last week of month)</i>	7.45pm

*For further details please call Envoy Hilary Chadwick. T:01525 222087 / 07932 057490  
E: [hilary.chadwick@salvationarmy.org.uk](mailto:hilary.chadwick@salvationarmy.org.uk)  
W: [www.salvationarmy.org.uk/eaton-bray](http://www.salvationarmy.org.uk/eaton-bray)*

## Soup Kitchen

Chris and John Yorke would like to thank everyone who supported their "Soup Kitchen" in aid of the R.N.L.I. which was held on Friday 29th January 2016. £250.00 was raised for the Lifeboat charity.



# ARE WE PROUD OF OUR VILLAGES?

I don't actually own a dog. However since Christmas I have had the pleasure of looking after my daughter's dog on several occasions. (For those of you in the fraternity, I am the one with the ball mad black Labrador seen out and about playing football in Force 9 gales.) This has involved a great deal of walking around the streets, fields and lanes of Northall, Edlesborough, and Eaton Bray and the thing that really struck me during our perambulations was the incredible amount of litter lying everywhere in the villages – in the grass at the side of roads and lanes, and even deep in the fields around the villages.

I belong to the EDaN Beautification Team. There aren't very many of us, but we work hard to make our villages as pleasant as possible, planting flowers and trees, and raising money to help fund projects to improve the environment we live in. I believe that the whole community should feel responsible for the state of our villages. I know that the first reaction would be "Well they should get someone in to clear it up. We didn't put it there!" My feeling is that we didn't put the weeds in our gardens either, but most of us keep our gardens tidy ourselves. "They" are "us!"

I live in Eaton Bray Road in Northall. Periodically, I clear the verges from the top of the road down to the bridge. I choose a pleasant day, put on a yellow jacket and rubber gloves, and by the time I've finished I have several bags (orange ones, provided by Aylesbury Vale on request) of assorted rubbish – I won't upset you with details, but you wouldn't believe what people will throw out of their car windows! Mostly it is fast food wrappings and plastic bottles and cans. WHY can't they take them home and put them in their bins?? (I know that it is worse after the Recycling and Dustbin lorries have been, especially after the high winds we have been experiencing.) When I have finished there is a lovely glow of satisfaction that it will be tidy for at least 24 hours until some moron lugs another can out of his van window. I ring the lovely lady at AVDC and she sends a lorry around within a day or two and all the bags are collected and taken away. I am afraid that I don't know the procedure for Central Beds but I am sure that Eaton Bray Parish Clerk will have the information at her fingertips. You wondered what they do with your council tax?? Now you know – and if we didn't have litter and dumping, it might not cost so much!

Our Council Tax also covers the emptying of Dog Bins. Lots of us think we don't need to use them because we are "in the country". Wrong! It doesn't take much effort and they are everywhere in the villages and it would make walks a great deal pleasanter if the bins were used.

It's the Queen's ninetieth birthday celebration this summer. Wouldn't it be great if we could use this as an excuse for a grand litter pick around the villages to bring them back up to scratch? If everyone took responsibility for their patch and the road outside, it would go a long way to making our villages tidy and a place to be proud of.

(How many of us have hosted foreign visitors and been embarrassed by the litter in the ditches? It just doesn't seem to be so bad in other countries and I am sure that our visitors notice.)

So, how about it, residents of Northall, Edlesborough and Eaton Bray? Shall we organise some village litter picking parties in March and April before the vegetation grows and covers the worst until the autumn? It doesn't rot, you know, it just sits there until it is visible again....

I shall be doing my patch in Northall in the next couple of weeks. How about a Youth Organisation sponsored litter pick around Edlesborough Village Green for a charity? Or up Cow Lane – where everyone walks their dogs.....Take a carrier bag. Every little helps!

If you have been affected by this article – and feel you would like to join in or comment, my number is 01525 220361.

✍️ Lorna Cabbage.

*P.S. I had just finished this article and sent it off to the editor when I saw one of my neighbours, Alan Shackcloth, coming down the road, plastic bag in hand, collecting the debris which had been blown into the ditches. Well done Alan! Apparently he has been doing this quietly for the last couple of years! Clearly I am not the only one in Northall who thinks like this!!*



## Spring Clean Your Body

**During the cold, dark, wet months it is very easy to pick up bad habits such as slouching, slumping and forgetting to exercise. So, put a spring back into your step with a few simple postural exercises.**

Good posture involves keeping your body in correct alignment by maintaining your natural curves in sitting, standing and walking. Try following these 4 simple steps to help improve posture, as well as minimise the stress and strain on muscles, joints and discs.

### 1. Try to stand as tall as you can

This will make you look longer, leaner, fitter and thinner.

### 2. Push your shoulders down and back

This reduces the possibility of shoulder and neck pain. Imagine you are opening up the front of the chest wall, not standing to attention!

### 3. Pull your lower tummy muscle in

Only try to hold with 20% effort. This helps to improve the tone of your tummy muscles and improve your core stability.

### 4. Strike the heels to the ground and the toes-off all the way

- This helps to employ the full gait cycle.

Try to carry out these tips daily and soon it will become second nature. Why not add some exercise into your daily life – take the stairs instead of the lift and park at the furthest point in the supermarket car park.

If you have any aches or pains or feel you would benefit from physiotherapy, please contact:



**St Judes Clinic,  
26 Lake Street  
Leighton Buzzard  
LU7 1RX**

**☎ 01525 377751**

**🌐 [www.stjudesclinic.com](http://www.stjudesclinic.com)  
enquiries@stjudesclinic.com**

# Dagnall Village Hall 100 Club



## Winners, December 2015 and February 2016

10	Angie Pichon	£50
11	Nick Vaughn	£25
21	Mr and Mrs D White	£25

Drawn on Friday 11 December 2015, witnessed by Ann Tobin and the Dagnall Under 5s.

55	Janette Bamford	£50
104	Betty Mortimore	£25
25	Jenny Foale	£25

Drawn at the Village Hall Meeting in the Red Lion on Wednesday 20 January 2016

This is the final draw of 2015/16 - we will be signing up new memberships during March 2016, £12 for the year.

In the past year, we have paid out £600 in prizes to 16 members (2 lucky members

won twice in 2015/16) and made £660 for the Village Hall which has been match funded by Whitbread as part of their support for the local community, so over £1,200 for our funds.

Thank you to all existing and future members

Please call Sharon Quinn on 01442 842129 or speak to a Village Hall Committee Member if you would like to join and help the Village Hall Funds. Also, if you are a tax payer, please would you complete a Gift Aid form as this allows us to claim the tax back for each donation, giving more to the Village Hall

## Appledown's Rescue Dog of the Month



This pretty young lady is **Zen!** She is a Staffie aged about 2 years. This sweet-natured lass is a credit to her breed. She walks very nicely on the lead and loves a fuss! She will make a lovely companion for some lucky person.

If you could offer Zen or any of our other dogs a loving and secure home, please call in at the kennels any day between 10 a.m. and 4 p.m.

Please note that there are restrictions on rehoming adult dogs to families with children under seven years of age. Full details of the rehoming process can be found on our website or please contact the kennels.

**Appledown Rescue and Rehoming Kennels Harling Road, Eaton Bray LU6 1QY**

Call 01525 220383 or e-mail: [appledown.kennels@btinternet.com](mailto:appledown.kennels@btinternet.com)

Website: [www.appledownrescue.co.uk](http://www.appledownrescue.co.uk) **Follow us on Facebook & Twitter!**





# All Saints' Church, Dagnall

## Services in March 2016

Sun. 6th Mar.	9.00 am	Eucharist
	10.30 am	Morning Service
Sun. 13th Mar.	10.30 pm	Morning Service
Sun. 20th Mar.	10.30 am	Family Communion
Fri. 25th Mar.	6.00 pm	Special Service for Good Friday
<b>Easter Day</b>		
Sun. 27th Mar.	9.00 am	Eucharist
	10.30 am	Family Service
Sun. 3rd April	9.00 am	Eucharist
	10.30 am	Morning Service



Sunday School meets each Sunday at 10.30 am except when there is a Family Service.



**Schoolreaders are currently looking for reading volunteers from within the Parish to partner with local primary schools.**

They are a Bedfordshire charity set up by Jane Whitbread and Michael Scott to improve children's literacy.

**In 2014, 1 in 8 children left primary school unable to read to the required standard.**

Poor literacy at an early age makes learning more difficult and has severe lifelong results. This is something which Schoolreaders is determined to stop.

Reading well is so important. It is a core skill which will aid a child's learning and help them to succeed at school and get on in life. However, for many children, reading time at home and school may be insufficient.

Research by Oxford University Press shows **just 10 minutes reading a day can boost school achievement!**

**Schoolreaders place volunteers in local schools to listen to children read on a one to one basis.** The aim is to encourage reading, improve literacy and build confidence to give children in the community the best possible start in life.

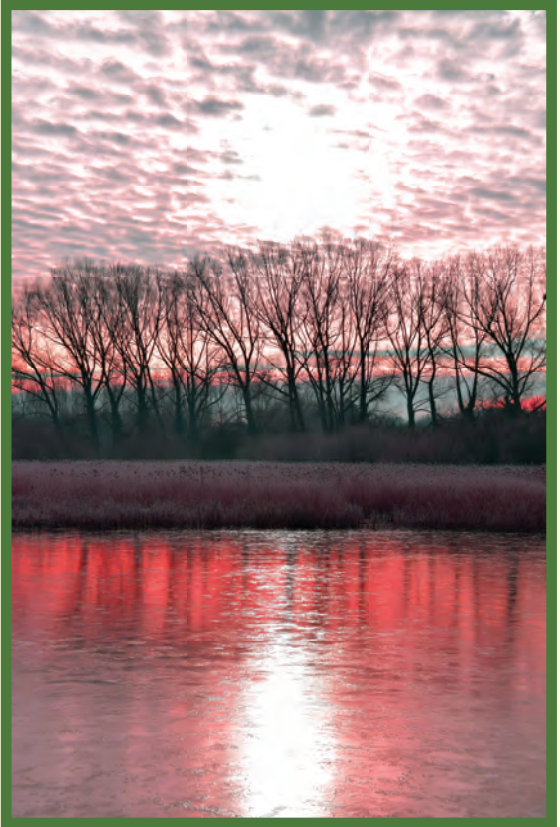
The scheme launched in Bedfordshire in September 2013 with just 12 schools. Today, Schoolreaders works with over 95 primary and lower schools and 130 volunteers. This academic year, 1200 children will be supported every week.

They are currently looking for new reading volunteers in the area to support local schools. The only requirements are that volunteers are able to commit 1-3 hours a week during term time and are fluent in English.

If you would like to be involved in this worthwhile project supporting children in the area, **please visit their website at [www.schoolreaders.org](http://www.schoolreaders.org)** and complete the online application.

Alternatively, **call a member of the Schoolreaders team on 01234 924111 or email [admin@schoolreaders.org](mailto:admin@schoolreaders.org).**

# Your Photos



*Above: Pitstone windmill by Phil wood  
Right: Startops Reservoir early one winter morning by Richard Woodhead  
Below: Sunset from Edlesborough church by John Hockey*

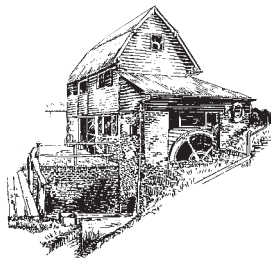




## FORD END WATERMILL

This little mill, recorded in 1616 but certainly very much older, was in use until 1963. Restored by volunteers, and now maintained and run by Ford End Watermill Society, it is the only remaining working watermill in Buckinghamshire with original machinery.

Stoneground wholemeal flour is on sale during milling demonstrations.



### OPENING TIMES 2016

Open between 2pm and 5pm on the following dates with milling demonstrations between 2:30pm and 4:30pm approx. Water level permitting. Last Admission 4:30pm.

28th March Easter Monday

2nd May Early Bank Holiday

15th May National Mills Weekend

30th May Spring Bank Holiday

19th June - Sunday

10th July - Sunday

7th August - Sunday

29th August Bank Holiday Monday

11th September - Sunday

16th October as part of Tring's Own Apple Fayre

Admission Prices: Adults - £3.00, Children (Age 5-15) - £1, Under 5s free entry

Address/Location: Station Rd, Ivinghoe, Bucks LU7 9EA - 600m from the church along Station Road (the B488 to Leighton Buzzard).

## NORTHALL BAPTIST CHAPEL

**Chapel Lane, Northall**

(just beyond the 30 speed limit signs on the road towards Leighton Buzzard)

Everyone is welcome to our Sunday worship each week between 11am and 12.30pm including tea/coffee and time to talk together.

For more information contact:

John Hazell 01525 218142

Email [northallchapel@btinternet.com](mailto:northallchapel@btinternet.com)

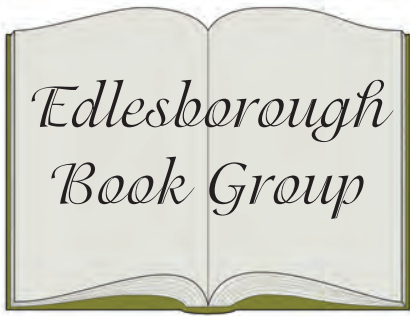
There has been a Baptist Chapel in Northall for more than 200 years. Today we continue to seek to worship God, serve him in our daily lives and support and encourage one another in the difficult and the joyful times.

## London Luton Airport

With an increase in aircraft in the area and in particular when the wind is from the East, we are getting some aircraft flying directly over the village to join the flight path into the airport. If you are disturbed by the traffic flying over the village, there is a complaints hotline number: 01582395382. This is an airport number where you can register your concerns. It is important to do this if we are to reduce these disturbances over our village.

If you need to complain about Heathrow flight noise the number is 0800 344 844. Email: [noise\\_complaints@heathrow.com](mailto:noise_complaints@heathrow.com)



The logo for the Edlesborough Book Group is presented as an open book. The title 'Edlesborough Book Group' is written in a black, elegant cursive font across the two pages of the book. The book is set against a light green background with a subtle floral pattern.

# Edlesborough Book Group

*A Summer Bird-Cage* by Margaret Drabble

This is the story of two sisters, Sarah and Louise. Louise, the elder is about to be married and Sarah, who has recently graduated from Oxford and who narrates the novel, has returned home to be her bridesmaid. It is quite clear that she dislikes her sister's choice of husband and is puzzled as to why Louise, who is stunningly beautiful, should be marrying such a person. Stephen Halifax is very wealthy, the author of some successful, satirical novels. He is arrogant and self regarding and not even very physically appealing. Sarah's conclusion is that her sister is marrying purely for the security and position his wealth will bring her and is sure that it will not be a happy marriage. For Sarah, this is a turning point in her own life and there are decisions to be made regarding her future. Although highly educated, she seems unsure about career choices and appears to lack confidence in her own abilities. She finds a flat in London to share with a friend and takes a humdrum job at the BBC, telling herself that this is just a stopgap whilst she finds her true calling.

Although this is a well written book, the narrative is static. There is no storyline of interest to hold the reader's attention; this is a study of the two sisters and the tensions between them. Sarah is not a very likeable character, she is an elitist and snobbish in her views. She is envious of her sister's beauty and apparent ease of life and is highly critical of everyone she meets.

Margaret Drabble is a distinguished author,

who has been writing highly acclaimed novels since the early 1960's. *A Summer Birdcage* is her first book, written soon after she came down from university. It provides an authentic picture of London at that time, but there is little else to enjoy. There are many more enjoyable books to be read by this author.



## fitness 4fun



Get those muscles working! Tone and strengthen arms, legs, bums and tums – you'll look and feel great.

Why not give it a go? Only £5 per week for one hour of fun fitness. Pay-as-you-go, come when you can.

Come along and join our friendly group.

Everyone welcome.

No need to book – just show up.

What: Fitness4Fun with Kay

Where: Edlesborough Memorial Hall

When: Every Friday, 10:00-11:00 am

# BRAYSCOPE

Experts in commercial & domestic horticulture

For all your **Commercial**  
and **Domestic** landscape  
requirements

**Professional** and **Qualified**  
landscape maintenance and  
**Construction** company



Contact Kevin on

**01525 220948 07949 601630**

[brayscape@aol.com](mailto:brayscape@aol.com)

14 SCHOOL LANE, EATON BRAY BEDFORDSHIRE, LU6 2DT



STOCKISTS FOR



GUTTER BRUSH

## - All aspects of Pressure Washing - Roof Cleaning / Coating specialists

- Safe cleaning system using rope access
- Roofs cleaned using 'controlled' pressure washing
- All water recycled

For before and after photos please visit:

<http://www.facebook.com/greatoutdoorsandin>



# 0800 298 5883

[www.greatoutdoorsandin.co.uk](http://www.greatoutdoorsandin.co.uk)



FREE QUOTATIONS



# AJR

BUILDING SERVICES

Over 25 years experience

Friendly and Reliable  
Service

Fully insured

All aspects of building  
work undertaken:

- Kitchens & Bathrooms
- Refurbishments
- Garage Conversions & Extensions
- Plastering, Painting & Decorating
- Wall and Floor Tiling
- Patios and Fencing
- Fascias & Soffits
- General Maintenance

Mobile: 07931 308306 Tel: 01582 475428

Email: [ajrbuildingservices@hotmail.com](mailto:ajrbuildingservices@hotmail.com)

## A McClelland Pest Control



FOR FAST RESPONSE CALL:

Mobile 0777 494 8415

Office 01582 872158

*specialists in: wasps - bees - ants  
hornets - fleas - cockroaches - bed  
bugs - pigeons - magpies - rabbits  
rats - mice - moles - squirrels  
foxes - mink - feral cats*



UNMARKED VEHICLES

For further information please call or email  
[amcclellandpestcontrol33@gmail.com](mailto:amcclellandpestcontrol33@gmail.com)



family photography



hobby photography



product photography




locations & premises

[www.redbrickphotography.uk](http://www.redbrickphotography.uk)

Eaton Bray's New Photographer!

07852 200 139

# THE PERFECT PLACE FOR ANY OCCASION....

 *ACCOMMODATION - OFFERING A VARIETY OF  
ROOMS/SUITES*

 *BREAKFAST, LUNCH OR DINNER  
IN OUR HENRY'S RESTAURANT*

 *SUNDAY LUNCH*

 *MEETINGS*

 *WEDDING PACKAGES*

 *PRIVATE FUNCTIONS*

 *FUNERAL RECEPTIONS*

 *CHRISTMAS & NEW YEAR PARTIES*



FOR MORE INFORMATION ON WHAT WE OFFER,  
PLEASE CALL US ON

**01582 662201**

OR VISIT OUR WEBSITE.

# Leighton Plumbing & Heating

Oil fired boilers  
service, repairs  
& installations



All other aspects of plumbing  
& heating undertaken

Oftec registered & insured

01525 385250  
07774 567472

11 Woodman Close  
Leighton Buzzard  
Beds  
LU7 3NU

leighton-plumbing@ntlworld.com



Helping Hands  
The Home Care Specialists

Est. 1989

## Do you need a Helping Hand?

Our **local** care team has been providing award winning quality homecare since 1989.

We offer a homecare service **from 30 minutes per week to full-time Live-in Care**, which enables you or your loved one to remain at home with compassion and dignity.

To find out how we can help,  
call: **01296 752 632** or  
visit: [www.helpinghands.co.uk](http://www.helpinghands.co.uk)



**Stoten Gillam**  
chartered accountants  
chartered tax advisers

99 High Street South  
Dunstable  
LU6 3SF  
Tel: (01582) 608601  
[www.stotengillam.co.uk](http://www.stotengillam.co.uk)

ICAEW  
CHARTERED  
ACCOUNTANTS



"Practical  
Solutions for  
Growing  
Businesses"







[www.plumbingandgas.org.uk](http://www.plumbingandgas.org.uk)

Gas boiler, fire & cooker,  
servicing, installation  
& repairs cylinders etc.

Heating system problems  
*inc.* power-flushing

Dripping taps  
& internal plumbing issues

*Also* solar thermal repairs & servicing  
**Inc. LPG and park homes**

**01582 674829**

[mark@plumbingandgas.org.uk](mailto:mark@plumbingandgas.org.uk)


### MOBILE MESSAGE THERAPY

**20% OFF**  
FIRST 2 MESSAGES  
Vouchers are available

Rejuvenate and revitalise with a massage.  
Rest your mind, relax your body, relieve tensions,  
restore calm and balance with some well deserved  
respite from your busy life and daily stresses.

Sarah Tees, ITEC, CThA  
07792 542760  
01525 220323  
[esprittherapy.co.uk](http://esprittherapy.co.uk)





## FREE INITIAL CONSULTATION

### OUR SERVICES INCLUDE:

Accounts • Bookkeeping Services • Cloud Based Bookkeeping • Tax Returns  
Management Accounting and Reporting • CIS • Payroll Bureau • VAT Returns  
Corporation Tax • Company Secretarial • Specialist Business and Tax Advice


### Specialising in New Business Start-Ups

- Fixed Fee Quotes
- Unlimited Email and Telephone Support
- Back Office Solution  
(dealing with your back office accounts function enabling you to focus on the rest of your business)

### Please contact us for more information...

Gable End, Sparrow Hall Business Park  
Leighton Road, Edlesborough. LU6 2ES  
Tel: 01525 229 539 • Fax: 01525 220 180  
enquiries@rileyaccounts.co.uk  
www.rileyaccounts.co.uk

@RileyAccounts • Also on



Call us on...  
**01525 229 539**

## "YOUR LOCAL ACCOUNTANT"

We are a nurse-led home care provider committed to delivering the very highest standards of care.

Support from our dedicated team gives you or your loved one the peace of mind and confidence to be able to continue living at home.

Family-owned and managed, we are independent and do not belong to a national chain or franchise. We are registered with the CQC, number 1-1499072841.

To talk to us about your requirements please call Helen Yates RGN on 07920887414 or 01442 843064 or email [helen.yates@yourownhomecare.co.uk](mailto:helen.yates@yourownhomecare.co.uk)



your own  
home care  
putting the nursing back into care



[www.yourownhomecare.co.uk](http://www.yourownhomecare.co.uk)





Edlesborough Dental Practice



***Get the Beautiful Smile You Deserve!  
Book your FREE Smile Assessment now.***

## **Edlesborough Dental Practice**

**Telephone: 01525 223175**

11 Cow lane, Edlesborough, LU6 2HT

[www.flossandsmile.co.uk](http://www.flossandsmile.co.uk)

**General Family Dentistry \* Crowns \* Bridges \* Dentures  
Smile Makeovers \* Tooth Whitening \* Tooth straightening Implants  
\* Hygienist \* Sedation \* 0% Finance available**



### **Some comments from our December 2015 Ofsted report:**

Children learn good manners and know how to treat each other with respect.

Staff are consistently kind and caring and this supports children to develop confidence and resilience.

Teaching is consistently good and children's safety is given the highest priority.

We are a committee run playgroup operating five mornings a week 9:15 – 12:15 for children aged 2 to school age.

**If you would like to find out if your child would be happy here, please phone our Playgroup Leader, Ann Tobin on 07816 358 342.**

[www.dagnallunderfives.co.uk](http://www.dagnallunderfives.co.uk)

## DJH and Co Accountants Limited

Specialising in helping small  
businesses and self-employed  
people.

Financial Accounting, Bookkeeping,  
Payroll and Tax Assistance services.  
*Competitive rates. Fully Licensed and insured.*

**01525 792288/07875560090**  
[djhandcoaccountants@yahoo.com](mailto:djhandcoaccountants@yahoo.com)  
[www.djhandcoaccountants.co.uk](http://www.djhandcoaccountants.co.uk)

## CHIROPODY HOME VISITING PRACTICE

**Julia Reading, BSc(Hons)**

17 years experience

- \* Corns \* Hard skin \* Verrucae
- \* Thickened/Ingrowing nails
- \* Nail cutting \* Diabetic feet

Please telephone: 0774 647 2781

for more information or to make  
an appointment

 The COLLEGE  
of PODIATRY

 hpcp  
registered  
[www.hpcp-uk.org](http://www.hpcp-uk.org)

# Coffee Tavern



**Large Hall £6.00 per hour**

**Committee Room £3.50 per hour**

**Large Hall &  
Committee Room £8.00 per hour**

**Bookings 01525 220891**

**Stairlift and access ramp available**

  
**Oven  
Wizards™**  
*We clean your oven...so you don't have to*

Call today to have your oven, hob, extractor or  
Aga professionally cleaned

Contact Paul Joyce: Tel 01525 792761  
Mob 07808 580718  
[pauljoyce@ovenwizards.com](mailto:pauljoyce@ovenwizards.com)

## Wag & Stroll

*Dog Walking &  
pet caring service*

*One off or regular  
walks in familiar  
surroundings*

*Cat sitting also available  
Please call Sue on*

**07758 647488**

**email: [wagandstroll@gmail.com](mailto:wagandstroll@gmail.com)**



  
**Electrical  
Services**  
[www.rselectricalservices.com](http://www.rselectricalservices.com)

  
DOMESTIC  
INSTALLER

**FULLY QUALIFIED  
ELECTRICAL ENGINEER**  
CPS Registered through NICEIC Scheme

  
City &  
Guilds  
Qualified

Competitive prices and quality service

Available for all your domestic and  
commercial electrical requirements

No job too small

Call Russell Sears:

**07578 008567  
01525 220008**

17 Good Intent, Edlesborough

# Otterly Spoiled

## New otters receive treat-filled hamper at ZSL Whipsnade Zoo

A boisterous bunch of otters received a special welcome hamper from their keepers on Tuesday 9 February, having just moved in to their new home at ZSL Whipsnade Zoo.



Zookeepers prepared a hamper full of the otters' favourite fishy treats to celebrate the arrival of three female Asian small-clawed otters called Blaze, Noodle and Drumstick. They join two male otters, Fattie, so named for his huge appetite, and Chopstick, who have lived at ZSL Whipsnade Zoo since 2005, to form a new social group.

Senior Keeper Alex Pinnell said: "Blaze, Noodle and Drumstick are a very excitable trio,

and they're already keeping the male otters on their toes. All five have settled well into the new social group, so we thought we'd help them celebrate with a housewarming hamper.

"We feed the otters a huge range of different freshwater and saltwater fish, as well as prawns, mussels, mice and even broccoli! We've put all their favourite snacks in, and the hamper itself will be something totally new for them to explore and enjoy. They're an inquisitive bunch, I'm sure they'll be delighted by their treat."

Asian small-clawed otters are classified as Vulnerable by the IUCN Red List, due to habitat destruction, water pollution and hunting. Visitors can see the new arrivals and take part in Monster Myth-busting activities this half-term at ZSL Whipsnade Zoo. Book online at [www.zsl.org](http://www.zsl.org)



# What's On in March at the Grove Theatre

## Spring Film Season

Screenings throughout March

See some of the hottest titles around on one of the biggest screens in Europe. For film listings for the Spring Film Season, contact the Box Office on 01582 60 20 80 or visit [www.grovetheatre.co.uk](http://www.grovetheatre.co.uk).

## As You Like It

Thursday 3 March 7pm, Tickets: £15

Encore screening from the National Theatre. With her father the Duke banished and in exile, Rosalind and her cousin Celia leave their lives in the court behind them and journey into the Forest of Arden. There, released from convention, Rosalind experiences the liberating rush of transformation. Disguising herself as a boy, she embraces a different way of living and falls spectacularly in love.

## Thank You for the Music

Friday 4 March 8pm, Tickets: £25, £22.50

The world's favourite ABBA and Bee Gees concert show comes to town with its all-new, sequin-spangled spectacular. Entertaining the nation for longer than ABBA in their prime, the international smash-hit show's all-star cast has delighted the world with Lycra-tight harmonies and superb musicianship for longer than ABBA during the 70s and 80s!

## The Kast Off Kinks

Sat 5 March 7.30pm,  
Tickets: £20, £18

Not to be missed!  
The Kast off Kinks  
are actual former



members of the legendary band 'The Kinks'. This great line-up features Mick Avory (the original drummer on all the classic hits from 1964-84), John Dalton (bass/vocals, Kinks 1966 & 1969-'76), Ian Gibbons (keyboards/vocals, Kinks 1979-'96 and still with Ray Davies) with Dave Clarke (guitar/vocals, formerly

of the Beach Boys, Noel Redding & Tim Rose).

## Joe Longthorne

Wed 9 March, Tickets: £22

This talented artist began his career over three decades ago with appearances on Junior Showtime, followed by a grounding on the tough Northern club circuit. His big break came in 1981 when he was a finalist on London Weekend Television's Search for a Star – this led to appearances at the London Palladium with Bob Hope and The Talk of the Town. Now, Joe is looking forward to new challenges, new songs to sing and new audiences to thrill.

## Sean Lock

Thursday 10 March 8pm, Tickets: £23

Ages 15+

Every three years the comedian Sean Lock writes and tours a new stand-up show. Well he's only gone and done it again! What's he like? Come and see what he's blithering on about this time.

## Buddy Holly

Friday 11 March 7.30pm, Tickets: £23.50

The UK's number one Buddy, Marc Robinson, arrives with the fabulous Buddy Holly – A Legend Reborn concert show. Marc revives classic hits like Peggy Sue, That'll be the Day and Oh Boy. Backed by a band reminiscent of the Crickets in their Fifties heyday, Buddy Holly – A Legend Reborn is an authentic slice of rock 'n' roll nostalgia that ensures Buddy's incredible legacy of unforgettable hit songs lives on.

## Live at the Grove

Saturday 12 March 8pm,  
Tickets: £15 Age 18+

Live at the Grove returns this March with another line-up of top TV



headliners. A sensational line-up: Tom Deacon, Paul Tonkinson, Michael Legge and Joe Lycett.



### **Ed Byrne**

Wednesday 16 March 8pm,  
Tickets: £19

Recommended age 16+

That bloke. You know. The Irish guy. No, not the bald one. The other one. You know him. The one Carol from work really likes. Wait, that might be Jason Byrne. Anyway. Funny

chap. Has a new show!

### **Soul Legends**

Friday 18 March 8pm, Tickets: £24

It's the smash-hit, Stateside spectacular featuring more soul classics than any other production. It's all aboard the soul train for the show of the year, embarking from soul's heady Sixties origins... steaming, non-stop, through to the present day via everyone's favourite Seventies and Eighties dance classics.

### **Magic – A Kind of Queen**

Saturday 19 March 7.30pm

Tickets: £19.50, £18

Magic, the first and still the best tribute to Queen, perform all of Queen's greatest hits plus some you may not have heard for a while.

### **Boris Godunov**

Monday 21 March 7.15pm, Tickets: £15

Broadcast live from the Royal Opera House. The originality of the composer's vision of Pushkin's play about Tsar Boris Godunov – who reigned over Russia between 1598 and 1605 – was too much for the management of the Imperial Theatres, who demanded changes that were incorporated in the second version of the opera, in which Boris finally had its premiere in 1874. Many commentators, nevertheless, prefer the integrity of the

original, which makes few concessions to operatic conventions.

### **That'll Be The Day**

Wed 23 March 7.30pm, Tickets: £25.50

Prepare for a nostalgia party extravaganza as the legendary That'll Be The Day returns with another opportunity to see its 30th anniversary special! The nation's favourite rock 'n' roll variety spectacular features a fantastic line up of knock-out hits from the 50s, 60s & 70s, plus more side-splitting comedy!

### **Ray Mears**

Thursday 24 March 7.30pm

Tickets: £21, Under 16s £15

Have you ever wondered how you might cope faced by seemingly impossible odds? In this heart stirring presentation be prepared to be shocked, amazed and inspired to succeed by the stories of our fellow human beings and the incredible circumstances they have overcome.

### **Superslam Wrestling**

Friday 25 March 6pm

Tickets: Adults £15, Children £10

Superslam Wrestling returns with a special Easter extravaganza of top wrestling action. Top stars from the USA take on a team of British all stars in a two hour fun-filled and action-packed event.

### **Revelations**

Monday 28 March 2pm, Tickets: £10

Encore broadcast from David H. Koch Theatre, New York City. This is your chance to witness an iconic masterpiece of American dance, Alvin Ailey's Revelations, described by The New York Times as "one of the great works of the human spirit." This stunning, soulful tour de force draws on African-American spirituals, song-sermons, gospel songs and holy blues.



## Edlesborough W.I.

Our meeting was held in the Memorial Hall on 12th January. Our speakers were husband and wife team, Jacky and Mark Bloomfield who spoke on the subject, 'British Wild Life'.

Jacky and Mark made a return visit to our meeting with yet another very interesting talk, which Mark referred to as, 'A Guide' and added. "Look into nature and understand everything better." There then followed a superb talk, accompanied by beautiful photographs; taken by the speakers, of a selection of creatures, which inhabit the land, air and waters of Britain.

The Red deer, our first natural species of deer, are the largest land mammals in the U.K. and have been here since the last Ice Age and are now to be found in the Highlands of Scotland. These animals made a spectacular sight in the accompanying photographs.

Moving on from the Highlands of Scotland to the woodlands of the New Forest, Suffolk and Norfolk we were shown delightful photographs of the Roe deer, the second of our natural species of deer, which apparently have been here since the retreat of the last Ice Age; living in those deep woods, where they live secretive lives, glimpses of which can be observed during the rutting season. These occur out in open land between July – September. The main evidence of deer is the lack of fine shoots and buds, which are sources of food for these creatures.

The WI ladies were told about three other species of deer, with beautiful photographs showing the creatures in all their finery. These included the Fallow deer, which were hunted by the Normans; especially for the harts; the male Fallow deer. The

males were hunted in particular for their palmate antlers. These are very wide and look similar to an open, stretched human hand. The palmate antlers appear in adult bucks after the animals are three years old. The Speckled deer are creatures with colours varying from white, muddy brown, dark brown to black. In summer their 'rear ends' are speckled white with an inverted black horse shoe shape. The Speckled deer are able to stand up and reach high in the trees in order to eat the shoots. The deer section concluded with the Muntjac deer, a familiar sight in this part of the world. The Muntjac deer were introduced into the grounds of Woburn Abbey by the then Duke of Bedford in the 1920's. However, the deer escaped and bred successfully and the population grew quickly. The deer have spread out widely and are now heading towards Manchester (but not via the Motorway). Apparently, when these deer communicate it sounds like dogs barking.

After hearing about and seeing the deer, we listened to how the Red fox was once very much a country creature until the 1940's, when they began to move closer to houses. Now they are very much an urban creature. We were also informed of the importance of rabbits, as a means of a food supply. Country people had depended on rabbit for many years but then rabbit became a food for the rich. Henry III had a rabbit park at Guildford, where people had to pay for a license to kill the rabbits in order to eat them. However, over time, payment to the king became redundant and by the 1805 Enclosure Act, there were numerous rabbits to be had for hunting and eating.

A very important point was made clear to the WI ladies and that was, not to confuse

a rabbit with a hare. Hares are related to rabbits and look as though they have had their long ears dipped in ink but sadly they are now in decline. They live in open fields and are often disturbed especially with young ones, particularly on the Berkshire Downs and in Norfolk. People often see the leverets on their own and mistakenly think they have been abandoned and so try to hand rear them which is extremely difficult to do. The message to the WI audience and to those reading this article is please be aware, the leverets' mothers will return, probably when it is dark. Do not pick those little creatures up and take them away.

Moving from land to sky we heard how the Red kites were introduced into Wales from Spain and how they have moved on into England, where they have successfully bred. We have only to look up into the skies here to witness their presence. Barn owls live within a radius of twelve miles from hedgerows because there will be sufficient voles in those hedgerows for the owls' diets.

Our next port of call were the waterways and in particular the Grey herons, which are common and found all over Europe and Africa. Grey herons are the main predators of the waterways. During September and throughout autumn one can witness a rather spectacular sight in the form of heron boxing. This is when the older generation persuades the younger generation to leave home and are literally pushing the young away because the older ones need the territory for their food.

Mute swans are our largest flying bird and we heard about the swan upping on the Thames; when each cygnet is in turn counted and weighed. The waterways are a harbour for many of our birds and in particular the different species of duck. Canadian geese were introduced into

England in 1665 at St James' Park. Since then the population has increased because of the availability of grass, particularly with the opening of parks and golf courses. The Great Crested Grebe was a favourite and important bird. During Victorian times the bird was hunted close to extinction because the feathers, particularly the black feathers, were used in the millinery business for funeral hats. A spectacular sight to observe on ponds is the weed dance of the Great Crested Grebe, where both male and female reaffirm their bond; they mate for life. This awe inspiring activity occurs during April.

As a result of the near extinction of this bird, Emily Williamson in 1899 formed the Plumage League. There was also another league, called the Fur and Feather League in existence, which later amalgamated and from which the RSPB was formed; originally for ladies only.

We were treated to a wonderful exhibition of photographs taken by our speakers of a selection of our garden birds, butterflies and plants. We were told about the importance of our gardens as a means of providing a food supply for birds. We learnt that butterflies such as the Painted Lady migrate from N. Africa and Damsel Flies are submerged under water for two to three years before emerging to lay their eggs in ponds and finally Orchids have been present for seventy to eighty million years and are the most numerous plants on earth.

After the very informative talk and amazing photographs, the evening concluded with Jacky and Mark, who are both ardent supporters of the David Sheldrick Wildlife Trust, making the very poignant remark, informing us that during the time it had taken them to tell us about the wildlife in Britain, three elephants in Africa had died.

✍️ Jackie Flint

# Dagnall Weather Station (AONB)

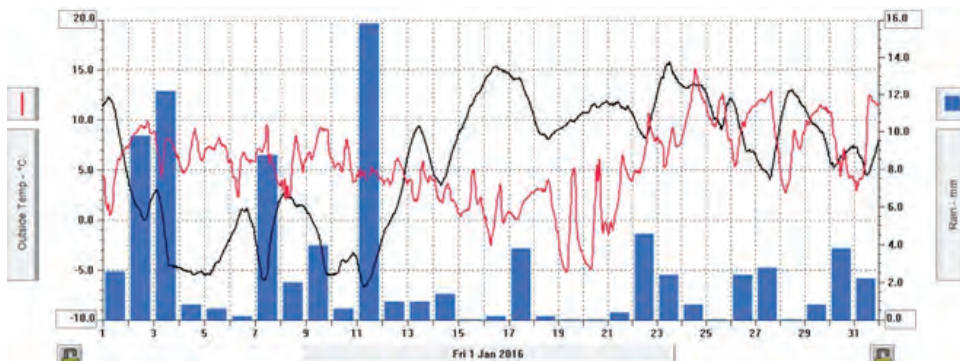
## Weather Conditions for January 2016

Elevation: 450 ft - Latitude: 51° 50' 13" North - Longitude: 0° 33' 34" West

The year started mild and unsettled. From 1st to the 11th low after low was blown in from the West giving us rain every day. In the middle of the month the wind changed to the North bringing colder and sunnier weather. In the last week we returned to milder conditions. It seemed that we had a very wet month as did the rest of the country but here in the Dagnall area the rainfall was average. The temperature was 1 degree above average, we only had 5 nights when the temperature dropped below -0°C very mild for January. Wind was higher than normal the last 10 days were the worst with gusts reaching 42 mph.

	High	Date/Time	Low	Date/Time
<b>Temperature:</b>	15.2°C	24 Jan 13.00	-5.2°C	19 Jan 07.30
<b>Mean Temperature</b>	5.6°C			
<b>Dewpoint:</b>	12.8°C	24 Jan 13.30	-6.2°C	19 Jan 08.00
<b>Humidity:</b>	97%	4-6-27 Jan	61%	30 Jan 14.30
<b>Barometer:</b>	1030.2 mb	23 Jan 12.00	977.8 mb	11 Jan 07.00
<b>Wind Speed</b>	42mph wsw	29 Jan 06.30	Months avg.	8.1 mph
<b>Wind Chill:</b>	14.6°C	24 Jan 13.30	-5.2°C	19 Jan 07.30
<b>Dominant Wind:</b>	S			
<b>Rainfall</b> *T= total rain days and moisture. R= Actual rain				
<b>*Rain Days:26 (T), 26(R)</b>	<b>Wettest Day 11 Jan</b>		<b>15.80 mm</b>	<b>0.622ins</b>
<b>Monthly Rain:</b>	<b>Total</b>	<b>January 2016</b>	<b>85.2 mm</b>	<b>3.354 ins</b>
<b>Yearly Rain:</b>	<b>Total</b>	<b>1 Month</b>	<b>85.2 mm</b>	<b>3.354 ins</b>

In the plot below the black line shows the pressure/ barometer reading. You can see in the first week separate lows corresponding with the rain shown in blue. Red showing the mild temperatures.



For weather data 24 hours a day, updated every 15 mins, visit: [www.dagnallweather.co.uk](http://www.dagnallweather.co.uk) and [http://bit.ly/weather\\_dagnall](http://bit.ly/weather_dagnall) this site forecast and much more. If anyone has a question, comment or wishes to contact me please email: [david@dagnallweather.co.uk](mailto:david@dagnallweather.co.uk) or telephone: 01442 843883. Dagnall weather now has an app for your ipad & iphone! Just go to the apple store, search for Wunderstation and follow the instructions to Dagnall Weather Station. Now updated every minute.







# Salvation Sound



Psalm 1.v.3. King James Version.

“And he shall be like a tree planted by the rivers of water, that bringeth forth his fruit in his season; his leaf also shall not wither; and whatsoever he doeth shall prosper.”

How many different trees are there in this world? If I had access to the internet no doubt I could find the answer to that question. I know that all kinds of trees are mentioned in the Bible. The first two really important ones are talked of in Genesis 1, The tree of life, and 2, the tree of knowledge, they stood, side by side in the garden of Eden.

If you had to be a tree, I wonder what sort would you prefer. A fruit tree? Perhaps bearing sweet apples or oranges? Or would it be one producing sour cooking apples or bitter seville oranges! A fir tree, then you could keep your needle-like leaves throughout winter; but someone might cut your life short at Christmastime! A horse-chestnut, with lovely candle-like blossoms - but when your fruit comes - maybe the kicks and thrown stones and broken branches that children inflict on you whilst trying to get the best “conkers” would hurt you too much! A willow - then you might be turned into a cricket bat and used to win the ‘Ashes’!

Trees are a source of raw materials. What would we do if we had no wood for our furniture, tool handles, house structure and so on. We realise too that trees are of great importance for their role in the regulation of our climate as well as beautifying the environment. Trees in the landscape are pleasing to the eye; as you travel through our countryside it is hard not to see their individual characters, in their shapes and colours; we are so fortunate to have oak, ash, sycamore, beech, elm and the different conifers, wherever we look we can see a tree. They are part of our heritage from cradle to coffin! Today metals, ceramics and plastics made by chemical processes have in many instances replaced wood, but we still need the trees to give us the tons of paper that we use and for the books we read.

We can read of Joseph, the carpenter, and his wife Mary and of their son, Jesus, in the Bible. I wonder when Jesus was a child, did he stand at his father’s side, at the bench, hammering nails into a piece of wood? Did he make a cross of wood then? Not realising that one day he would end his earthly life on a similar cross. The Romans who ruled the Middle East in those days, made many, they were an everyday sight, a “goodly” form of punishment!

Malcolm Andrews wrote:

“Take up the cross on which he died, for love of us was he crucified.  
Go tell the world, let’s shout and sing of God the father, Christ the king,  
Tell of the Spirit too, pray it may fill both me and you  
And so we come to God in prayer as in the cross of Christ we share.

Easter is not just the first holiday of the year, prior to “Easter” is lent, the word lent comes from the Anglo-Saxon word for spring; early Christians took their faith seriously and spent a lot of time during Lent fasting. They abstained from meat, eggs and dairy produce; hence pancake day, also called Shrove Tuesday; the interest in Lent has waxed and waned over past years. Although we still enjoy our pancakes, people do not spend as much time in Bible Study or meditation. Perhaps this year as we journey from winter into spring, with the thought of holidays to come, we will remember that holiday means Holyday, and think of the passage of the cross of wood, the walk that Jesus took, what “Good Friday’s” pain meant, and then “bathe” in the joy of Easter Sunday.

“We may not know, we cannot tell what pains He had to bear,  
But we believe it was for us He hung and suffered there”

# **DOG FOULING**

## **WHO'S WATCHING YOU?**



**BAG IT & BIN IT!**  
**OR FACE A FINE**

**REPORT THOSE**  
**WHO DON'T**

**01296 585858**

(ask for Environmental Health)

Produced by Edlesborough Parish Council

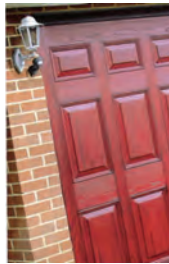


# Premier Garage Doors & Gates



## Quality Garage Doors

- ✓ Superb choice of designs in metal, wood and fibreglass
- ✓ Any size door made to your requirements
- ✓ Large selection of spares & fast repair service available
- ✓ New or existing doors converted to automatic
- ✓ Professionally fitted by own expert craftsmen
- ✓ Prompt free estimates & advice
- ✓ We cover all areas



**(EST 1984)**

DIY kits available  
Insurance work welcome  
Council approved  
Remote control gates also available



Unit 7, Sparrow Hall Farm, Leighton Road, Edlesborough LU6 2ES

**01525 220212**

**[www.premiergaragedoors.co.uk](http://www.premiergaragedoors.co.uk)**



# JANES FLOORING

At **Janes Flooring** we believe you should enjoy the experience of shopping for your new floor covering and to be given the correct advice and product information to help you make the right decision.

We love to help you choose the right products and colours to enhance your own interior design ideas - **we encourage you to borrow our samples and take them home to ensure you find the perfect match.**

We offer a start to finish service and will look after you all the way, our additional services include **uplift and disposal of your old flooring, helping with moving your furniture and appliances.** You can even leave your key with us and let our fitters get on with the job!

- **Carpet, Karndean, vinyl, laminate & engineered wood.**
- **FREE No obligation quotes.**
- **Borrow samples.**
- **Uplift & disposal service.**
- **Moving of furniture.**

**10% OFF carpets & vinyl orders through March. Visit today and bring this advert with you.**



01525 220208



4-6 High Street



[www.janesltd.co.uk](http://www.janesltd.co.uk)

Edlesborough, LU6 2HS