

FOCUS

December/January 2016

**The local village magazine just for Us!
Eaton Bray, Edlesborough, Northall & Dagnall**

*Merry Christmas
and a Happy New
Year from the
Focus Team*



The White Horse Inn At Eaton Bray

Market Square
Eaton Bray
Beds
LU6 2DG
01525 220 231
www.eatonbraypub.co.uk



Midweek fixed price lunch
Tuesday to Friday 11.30am til 2.30pm
Great traditional pub dishes
1 course £6.50 : 2 course £10 : 3 course £13.50

See our new website at
www.eatonbraypub.co.uk

Booking a Christmas party or family get together?
The White Horse offers
excellent value for money
Call now for our seasonal
party menu and Christmas day menu



JAZZ AT
THE WHITE HORSE
1ST SUNDAY
EACH MONTH

Find details of
our Christmas
opening hours on
our spanking
new website

Focus Magazine Committee

Joint Editor: George Crutcher

7 Summerleys, Edlesborough 221637

Email: george.crutcher@tiscali.co.uk

Joint Editor: Sally Siddons

34 Wallace Drive, Eaton Bray 221733

Email: sallysid@hotmail.com

Dagnall Representative: Sue Cawdell

10 Deans Meadow, Dagnall 01442 842200

Circulation Manager: John Plater

41 Church Lane, Eaton Bray 221095

Treasurer/Leaflet Enquiries: Ken Coates

10 The Nurseries, Eaton Bray 220868

Advertising: Sally Siddons

34 Wallace Drive, Eaton Bray 221733

Design and Layout: Tracey Moren

(Moren Associates Limited) 01525 229695

Printed by: Priority Press

Dunstable 01582 699851

Copy for publication to the Editors by the

10th of the month

Focus is online at www.thefocusmagazine.co.uk

Focus accepts no responsibility as to the accuracy or content of any advertising or articles published in 'this' magazine neither do they reflect the opinion of members of the Committee.

© Articles published in Focus may not be reproduced without permission.

Focus would like to remind contributors that the deadline for articles is the 10th of the preceding month.

Kindly Note

If the event you wish to advertise falls in the first week of the month, it is advisable to get the details into Focus a month earlier. The magazines are not delivered from the printers until the first of the month, therefore it takes a few days for them all to be circulated throughout the village.

✉ Editors

Village Hall Bookings

To book your local village hall for an event please contact the following:

Northall: Lorna Cabbage Tel: 01525 220361

Eaton Bray: Norman Lee Tel: 01525 222831

Dagnall: Elizabeth Coates Tel: 01442 842550

Edlesborough Memorial Hall: Penny Pataky, Tel: 01525 229358

Police Contact Numbers...

making neighbourhoods safer together

General Assistance (Recommended Number): 101 Emergency: 999

Bedfordshire Police (Eaton Bray)

Leighton Buzzard Police Station/Kathryn Horgan: 01582 473411

Typetalk: 18001 01582 473418

Email: LPT.LeightonBuzzardLinslade&Rural@bedfordshire.pnn.police.uk

Thames Valley Police (Edlesborough, Dagnall & Northall)

PCSO Jackie Dodson Mobile: 07800 703 524

Email: NHPT@thamesvalley.pnn.police.uk

Village Diary Dec/Jan 2016



Weekly

- Mon-Fri (term time) Eaton Bray Pre-school, Eaton Bray Lower School, 01525 220468
- Mon-Fri (term time) Dagnall Under 5's, Dagnall Village Hall, 9.15am - 12.15pm, Mrs Ann Tobin 07816 358342
- Mon-Fri (term time) Edlesborough Pre-School, Edlesborough School, 01525 220431
manager@edlesborough.bucks.sch.uk
- Mon-Thu (term time) Totternhoe Pre-school, mornings, Totternhoe Lower School, Michelle Urbanowicz on 01582 668841
- Mondays Pilates, 10.45am, Totternhoe Memorial Hall, Lisa: 07799 893489
- Mondays (term time) 2nd Eaton Bray Brownies, girls 7-10 years, Edlesborough Memorial Hall, 6 - 7.30pm,
Contact Sandra Counsell 07979 521900
- Mondays Dagnall Community Choir, All Saints Church 7.45 – 9.45pm
- Mondays Weight Watchers, 7pm, Eaton Bray Village Hall
- Mondays (term time) Movement and exercise classes with a dance flavour, Northall Village hall 2-3.30.
Contact Jan 01442 864271.
- Mondays Curtain Call Youth Theatre 5-7.30pm, Eaton Bray Village Hall, Gavyn 01525 220525
- Mondays Curtain Call Theatre Group - 7:30-10:30pm Eaton Bray Village Hall, Sheila -
sdtwinkletoes@yahoo.co.uk
- Mondays KFPA ISTD Classical Ballet classes, 3+yrs, 4.15pm, Edlesbrough Memorial Hall,
www.kfpa.co.uk
- Tuesdays Line Dancing, 1.30-3p.m., Eaton Bray Village Hall, Lyn Stubbs 220731
- Tuesdays Pilates, 10-11am, Eaton Bray Village Hall, Nicky Roussou 07861 162680
- Tuesdays Totternhoe Baby & Toddler Group, 9.30-11.30am, St. Giles Church Hall, Ruth Allen,
01525 222468 or 07796 265174 or email ruthallen002@gmail.com
- Tuesdays Northall Baby & Toddler Group, 9:30-11:30am, (open in the Summer School Holidays)
Northall Village Hall, Stacey Richmond 01525 222999/07957 607592
- Tuesdays Tap & Ballet Classes, JoAnn Latus School of Dance, 4-8pm, Eaton Bray Village Hall,
01582 620576
- Tuesdays Circuit Training - Edlesborough School Hall, 7-8pm - www.simplesfitness.com
- Tuesdays Buggy Push Fitness Class - Edlesborough Memorial Hall, 10:30 - 11:15am - www.
simplesfitness.com
- Tuesdays Coffee Morning, Bring & Buy, Table Top Sale, 10-12noon, Salvation Army Hall,
Fortnightly Booth Place, Eaton Bray
- Weds Cheeky Monkeys Under 5's playtime, 1pm - 2.45pm, Eaton Bray Village Hall, contact
(term time) Rachel on 07789 760007
- Wednesdays Pilates, 7.15pm, Northall Village Hall, Lisa: 07799 893489
- Wednesdays Egyptian Dance Class, 7.30-8.45pm at Eaton Bray Village Hall. Contact: Soraya on
07976 964316 for more details
- Wednesdays Northall & District Age Concern Wednesday Club, 10am - 3pm, Northall Village Hall,
Contact Anna on 07854 230243
- Wednesdays Dynamic Yoga 6.30-7.30pm £5 Eaton Bray Coffee Tavern Keira 07936 693696
- Wednesdays (term time) Caterpillars preschool parent and child group 10:30am to 11:30am, Grace Baptist
Church, Moor End, Edlesborough £1 per family unit, Rebecca Dennis 07920 062248
- Thursdays Yoga, Northall Village Hall, 11.30am-1pm 01525 377542
- Thursdays Baby & Toddler Group, Salvation Army Hall, Booth Place, Eaton Bray, 9.30-11.30am
- Thursdays Keep Fit, Edlesborough School, 8pm Tel: 01582 668735
- Thursdays Jazzercise, 9.30-10.30am, Eaton Bray Village Hall, Angela Veryard, 01525 715208
- Thursdays KFPA Street dance classes 4+yrs 4pm, Edlesborough Memorial Hall, www.kfpa.co.uk
- Thursdays Box-Fit - 7:30 - 8:30pm, Eaton Bray Village Hall - www.simplesfitness.com
- Thursdays (term time) Central Bedfordshire Children's Centres' Toy Library, 9-9.45am, Eaton Bray (School
Fortnightly Lane) Public Car Park

Village Diary Dec/Jan 2016



- Fridays Tap & Ballet Classes, JoAnn Latus School of Dance, 4-8pm, Eaton Bray Village Hall, 01582 620576
- Fridays Keep Fit class, Edesborough Mermorial Hall 10 - 11am
- Fridays (term time) "Little Luvvies" baby ballet classes 10am-11.30am. Contact Emma Whittemore on 01525 376124
- Fridays (term time) Kids Club 6:00pm to 7:00pm Grace Baptist Church, Moor End, Edlesborough (across from the post office) Frances King 01525 229610
- Saturdays Jazzercise, 9.30-10.30am, Eaton Bray Village Hall, Angela Veryard, 01525 715208
- Saturdays Drama Class for Children, 10.35am-12.35pm, Eaton Bray Village Hall, Claire Casey, 07792 508591
- Saturdays KFPA Musical Theatre classes 4+yrs www.kfpa.co.uk, 10am, Edlesborough Memorial Hall
- Sundays Sundays Worship at 10:30am and 6pm Grace Baptist Church, Moor End, Edlesborough (across from the post office). Barry King 01525 229610 or Peter Feben 01525 221048
- Last Sunday Messy Church, 3-5pm at The Salvation Army Booth Place

Monthly

- 1st Monday Eaton Bray Parish Council Meeting, 7.30pm, The Coffee Tavern
- 1st Monday Eaton Bray W.I. Meeting, 7.30pm. Eaton Bray Methodist Church Hall. Contact Margaret Jones on 01525 220991
- 1st & 3rd Tuesday Dunstable & District Orbit (social and charitable) Club meet at Dunstable Rugby Club at 8pm. For details contact 01525 222441 or 01582 755147
- 1st Saturday St. Mary's church, Eaton Bray Coffee Morning & Plant Sale, 10am - 12 noon
- 1st Sunday May to September, St Mary's Church, Edlesborough Open Day, 2-5pm
- 2nd & 4th Tuesday TOTS, St Mary's, Eaton Bray, 2pm
- 2nd Tuesday Dunstable & District Local History Society meeting, 7.45pm, Methodist Church Hall, Dunstable (opposite Wilkinson)
- 2nd Tuesday Edlesborough W.I. Meeting, 7.30 pm, Edlesborough Memorial Hall
- 2nd Wednesday St. Mary's Ladies Guild, 2pm, St. Mary's, Eaton Bray
- 2nd Wednesday Eaton Bray & Edlesborough Lions Club, 7.30pm, The Coffee Tavern
- 2nd Thursday CAMEO Coffee, tea & chat, 10am-12noon, Edlesborough Methodist Church
- 2nd Saturday Workshops Dynamic Yoga 9.30-11am £10 Eaton Bray Coffee Tavern Keira 07936 693696
- 3rd Thursday Edlesborough Parish Council Meeting, 7.30pm, Memorial Hall
- 3rd Sunday Lunch club 11.30 to 2.00pm, Eaton Bray Village Hall, Chris Hewitt 222288
- Last Saturday Coffee Morning, 10-12 noon, Edlesborough Methodist Church

Other Regular Events

- 11th Dec & 8th Jan Leukaemia Research Coffee Morning, 2 Dunstable Road, Dagnall 10.30 am. All welcome.
- 15 Dec Dagnall Over Sixties party, 1:30pm, Dagnall Village Hall, Members only
- 17th Dec ELF Lunch Halfway House. Dunstable. 1p.m.
- 3rd Jan Beds Area Narrow Gauge Model Railway Club Meeting, 11.30am-4.30pm, Eaton Bray Village Hall
- 25th Jan ELF walk from Eaton Bray church, 9:30am

One Off/Annual/Irregular Events

- 2nd Dec Christmas Bingo, 7:30pm, Dagnall Village Hall, 01442 842404
- 4th Dec Edlesborough School Christmas Fayre, 2pm
- 4th Dec Father Christmas around Dagnall, 6:30 followed by Village Hall Light switch on
- 5th Dec Eaton Bray Methodist Church Coffee Morning & Craft Sale, 10am-12 noon
- 5th Dec Dagnall School & Under Fives Christmas Fair, 1:30pm, Dagnall Village Hall
- 6th Dec Dagnall Children's Christmas Party

Village Diary Dec/Jan 2016



One Off/Annual/Irregular Events

6th Dec	Quiz Night, 7pm, Edlesborough Memorial Hall, Tickets from Janes
10th Dec	Christmas Shopping Evening at Edlesborough Flowers, Janes & Seventh Heaven, 6-8pm
10/11th Dec	Lions Santa Sleigh in Edlesborough (provisional dates)
12/13th Dec	Crib Festival at St Mary's church, Eaton Bray
13th Dec	Dagnall Carol Concert, 3pm, Dagnall Village Hall
14th Dec	Lions Santa Sleigh in Dagnall (provisional date)
17/18th Dec	Lions Santa Sleigh in Eaton Bray (provisional dates)
18th Dec	Christmas Carols around Eaton Bray village, from 7:30pm
20th Dec	Eaton Bray Methodist Church Carol Service 10:30am
20th Dec	All Saints' Dagnall Carol Service 3pm
24th Dec	St Mary's Eaton Bray Candle Service 4:15pm and 6pm
31st Dec	New Year's Eve Party, 8pm to 1am, Bellows Mill, Tickets £60 01525 220548
9th Jan	Music at St Mary's, Eaton Bray, New Year Concert, Tickets: £7.50 Box Office: 01525 222283

The Focus Magazine committee wish all our readers a very Happy Christmas and a prosperous New Year. We thank you for all your articles throughout the year, and thank the volunteers that post Focus through your letterbox. We would remind you that the continued support of business advertising enables us to distribute the magazine throughout the villages for free. Please contact Sally Siddons on 01525 221733 or email sallysid@hotmail.com if you are interested in advertising next year.



EATON BRAY PARISH COUNCIL



Please come and help to run your village **BECOME A PARISH COUNCILLOR**

The Parish Council is nine members of the public

We come to each Parish Council Meeting in the Coffee Tavern on the 1st Monday of each month and spend on average around five hours each month advising and helping to run our village.



At present we have a vacancy – will YOU come and join us?

If yes, please contact the Parish Clerk

You can also view our website for more details



Heidi Head, Parish Clerk & RFO

Email: clerk@ebpc.co.uk - Telephone/Fax: 01525 221464 - Website: www.ebpc.co.uk
Office Hours: Tuesday/Thursday/Friday 09:30-13:30hrs [messages can be left on answerphone]



Village Notices

FOR SALE

Electric Golf Trolley
complete with cover £60

15 assorted golf clubs
and putters, £3 each

Set of 2 Samsonite Black suitcases
with matching briefcase £60

Suit Carrier £10
Tel: 01525 220991

FOR SALE



£799 ONO
FULLY ADJUSTABLE
WILLOWBROOK
SINGLE BED

As recommended by Age UK,
Excellent Condition
Cost £1,600 new less than 3 years ago
CALL JOHN ON 07768 362 089

FOR SALE

Acoustic Guitar, Ovation,
Applause summer series.

£65

Tel 07734111654



EDaN Community

Transport

Peter Williams:

01442 842506

Eaton Bray Village Hall
Can you help this vital Village asset?

Your Village Hall
needs YOU!!



We have two vacancies for trustees.
Just a few hours a year will make all
the difference. Please help us to help
the community.

For more details please call

Ross Bagni

01525 221411 or 07974 715222

25th Anniversary Charity Christmas Puzzle

This year sees the 25th Anniversary of the annual Puzzle set by Gordon Gray. The Puzzle is rated by participants as one of the most enjoyable (and devious) they have tackled and, with a theme designed to help completion, it will appeal to people who enjoy doing word puzzles. Puzzlers have plenty of time to find the answers and Puzzles should be returned, with a donation, by 24th January.

Four highest scorers will each receive a £30 prize.

Everyone who enters will qualify for one of five £10 prizes.

Copies of the Puzzle can be accessed from the web at www.christmaspuzzle.co.uk.

You can register early to receive a copy on the issue date of 8 December.

Over £63,000 raised for charity

£5,900 donated last year

This year's puzzle will support five charities nominated by Puzzlers.

Services at St Mary's Church

SUNDAYS : **8.00am** HOLY COMMUNION
 10.00am PARISH SUNG HOLY COMMUNION

On Third Sunday of each month:

10.00am – WORSHIP FOR EVERYONE a shorter, less formal service for families. (For anyone wishing to attend a service where Holy Communion is offered, there is a Family Communion at 10.30am at All Saints' Church, Dagnall, where visitors are assured of a warm welcome).

WEEK-DAYS:

Tuesday: **2.00pm** TOTS (Tots on Tuesdays) (2nd & 4th Tuesdays)

Wednesday: **10.00am** Holy Communion

EVERYONE WELCOME AT THESE SERVICES

THE ROYAL BRITISH
LEGION



Remembrance Service at St. Mary's Edlesborough

Closure of A4146 and High Street - A Big Thank You

The village Remembrance Service took place at the War Memorial on the Main Road in Edlesborough this year. As in previous years, we were allowed to close the main road through the village to allow the service to take place in peace and safety. There must have been about 250 - 300 people, including many children standing in the middle of what is usually a very busy road! We have several people to thank for making this possible.

First of all, it would not happen without the help of Will Pratt, our farmer in Northall, who lends us the use of his big trailer, and helps me to distribute the signs and manhandle them into their positions on the morning of the service - and then turns out to help me collect them all again later in the day. Many thanks Will - we could not do it without your help.

I would also like to thank on behalf of all the people who attended a peaceful service, the six volunteers who manned the barriers when the road was closed and coped with organising the diversion route and directing - sometimes unwilling - drivers along it. So a big thank you to Jim

and Norma Wright who held the fort at the Memorial Hall, Mike Scott and Vince Taylor, who kept the Northall end secure, and Bob Stilliard and Kevin Cabbage who manned the barriers at the Pebblemoor end of the closure.

Finally another big thank you to the three PCSO's who helped keep things safe at the top of the hill while the service was happening. It is very reassuring to have you all there, so thank you all very much.

A big thank you to Penny Pataky, the Parish Clerk, for all her help in organising the barriers and contacting various people to ensure that the closure went smoothly.

Also thank you to all the residents of Edlesborough who live in the area of the closure for your patience during the closure. I tried to make sure that the closure was widely published in advance and I hope that you were able to make suitable arrangements and that you were not too inconvenienced .

Next year, the service will be held at the Eaton Bray War Memorial.

✍️Lorna Cabbage.

A Letter from Rev'd Coralie



Vicar: Coralie McCluskey

The Vicarage, 11 High Street, Eaton Bray - Tel: 01525 220261

Honorary Assistant Priest: Revd John Heffer

Reader: Gordon Gray (220136)

Church Warden: Catherine Hayden (220527)

Email: admin@stmaryseatonbray.org.uk

www.stmaryseatonbray.org.uk

In that region there were shepherds living in the fields keeping watch over their flock by night Luke 2 v.8.

Have you ever wondered about the Christmas Carols we sing at this time of the year? Whether you like them or loathe them there is no getting away from them beginning in the middle of November through to Epiphany on the sixth of January. We all have our favourites, mine is *Silent Night*. Why? It reminds me of the late evening starlit skies in Pembrokeshire when it was my turn to check the cattle in the nearby fields. I will always remember the cold no matter how many layers I was wearing but the silence and the clear starlight sky was mesmerising, a little bit of heaven come to earth.

The Twelve Days of Christmas, a fun song, not often heard in church was published in England in 1780, without music, as a chant or rhyme. It is a cumulative song thought to be French in origin. The twelve days start on Christmas Day, although in some traditions begin on December 26 (Boxing Day or St Stephen's Day). What do the various things represent?

1 True Love refers to God

2 Turtle Doves refers to the Old and New Testaments

3 French Hens refers to Faith, Hope and Charity, the Theological Virtues

4 Calling Birds refers to the Four Gospels and/or the Four Evangelists

5 Golden Rings refers to the first Five Books of the Old Testament, the Pentateuch, which gives the history of man's fall from grace

6 Geese A-laying refers to the six days of creation

7 Swans a swimming to the seven gifts of the holy spirit

8 Maids a milking to the eight Beatitudes

9 Ladies dancing

10 Lords a leaping to the Ten commandments

11 Pipers piping to the 11 faithful apostles

12 Drummers drumming to the 12 points of doctrine in the apostle's Creed.

If you don't want to sing *The Twelve days of Christmas* it's a useful resource for a quiz. There are many opportunities to sing Christmas Carols during December and then into January when we celebrate The Epiphany. The Churches together Christmas Card, delivered to all homes in the 4 villages lists the many Christmas services.

Have a relaxing, peaceful and love filled Christmas and a healthy, happy New Year.

Coralie

Letter to the Editor...



Dear Editor,

I am the owner of a local cleaning company, 'Great Outdoors and In', which has been established since 2002. One of the key cleaning services we provide is 'Roof Cleaning and Coating' and over the years we have refurbished numerous roofs in local villages.

We have recently been contacted via a resident from the Orchards, Eaton Bray:-

He has had a 'door to door' canvasser, cold-calling and then a surveyor visit his property from a company called 'Roof Shield Solutions.'

During the 'hard sell', the company have told the owner that they have carried out the roof coatings in the Orchards. The resident knew that we had carried out coatings in his road, when he questioned the surveyor with this fact, the surveyor stated "we are affiliated with them". - This is a lie and complete nonsense. We are a family run independent company, and would never associate ourselves with other companies operating in this manner. On further investigation, 'Roof Shield Solutions' haven't carried out any coatings in this road.

If you have been approached by this company with similar false claims, please contact us as we are currently seeking legal advice.

Thank you for your time,

Regards

Mike Roberts, Great Outdoors and In, 0800 298 5883

Animal Advert-ures

Santa in residence at ZSL Whipsnade Zoo from 5 December 2015



Christmas is coming early at ZSL Whipsnade Zoo, as the Zoo's magical Christmas grotto opens on Saturday 5 December.



Every weekend from Saturday 5 December, and then each day from Friday 18 to Thursday 24 December, young visitors to the Zoo can **Meet Santa** and share their Christmas wishes in an unforgettably enchanting encounter.

Every child will receive a special gift and families can take away a festive family portrait. Mrs Clause will also be on hand with Christmas arts and crafts to keep younger ones entertained.

A **VIP Meet Santa** experience also launches for the first time this year, the week before Christmas. Lucky guests will get exclusive access to the Zoo before it opens, where

they can see their favourite animals at first light.

Children will not only be able to meet Father Christmas and his elves but also catch sight of his

reindeer as they graze in their paddock. Having enjoyed an extra special Reindeer Talk, guests will sit down to a delicious breakfast.

From 5 December, ZSL Whipsnade's Zoo's magical **Meet Santa** and **VIP Meet Santa** experiences will give families yet another reason to enjoy a wonderful day with animals such as elephants, lions and hippos at the UK's largest Zoo.

Advance booking is required. For more information or to book, visit www.zsl.org





UNICORN WINDOWS LTD

“WHERE QUALITY & SERVICE ARE NOT A MYTH”

www.unicornwindows.co.uk

Tel: 01525 854272



Unit 3 Youngs Industrial Estate, Stanbridge Road, Leighton Buzzard

comput@mation
computer support & services

Computer Support for Business & Home

Problem Solving:

Virus & Spyware Removal
Internet & Email Assistance
Fault Diagnostics
Repairs & Upgrades
Slow Running PC's

Sales:

Desktops, Laptops & Tablets
Printers & Peripherals
Software

Services:

PC, Mac & Linux Support
Wired & Wireless Networks
Data Recovery
Install & Set-up
Health Checks

On-site Visits:
Office Hours & Evenings
by appointment

For friendly advice call John Wallace: 07968 536068 or 01525 261381
Email: john@computamtion.co.uk
Web: www.computamtion.co.uk

Computamtion Services Ltd - Est.1999 with over 25 years experience
9a Lower Way, Great Brickhill, Buckinghamshire, MK17 9AG

Carpet & Upholstery Cleaning

Professional & Local

All work guaranteed - not happy, don't pay

Powerful equipment means drier much
quicker than other methods

100% Guaranteed no chemicals left in carpet
when dry therefore will not easily resoil
& perfectly safe for children & pets

Recommendations account for 90% of my work

Absolutely no hard sell

Telephone Colin for a Free Quote

DEEP-CLEAN

01525 851 811

www.deep-cleaners.co.uk

Email: colin@deep-cleaners.co.uk

EDLESBOROUGH SURGERY

11 Cow Lane Edlesborough

Enquiries - 01525 221630 Appointments - 01525 220333

www.edlesboroughsurgery.co.uk

Dr J R Bell, Dr Heather Counsell

Dr Tisha Patel

Dr Stephanie Johnston, Dr Kirsten Riemer

Friendly village Practice offering a wide range of health services including coils/implants, minor surgery, travel advice, in house blood tests, on-line appointments and repeat prescription ordering. Four Nurse Practitioners offering acute clinics with same day appointments. Also, midwife, health visitors in attendance. Local District Nurse Service.

Long established training Practice with a rotation of qualified doctors.

EDLESBOROUGH PHARMACY

01525 223181

Pharmacist – Mitul Patel

Friendly reliable professional service at the pharmacy

All doctors/dentists/veterinary and hospital prescriptions dispensed

Professional advice always available

Herbal/Homeopathic products

Special Orders on request

Stagecoach Theatre Arts
 An hour to sing, an hour to dance, an hour to act... A lifetime to Perform!

Please contact the Principal, Wendy Ashman
01442 823181
 leightonbuzzard@stagecoach.co.uk
 www.stagecoach.co.uk/leightonbuzzard
 www.facebook.com/stagecoachleightonbuzzard



SING! DANCE! ACT NOW!



Theatre Arts Schools
Stagecoach



MMH
Plumbing & Bathrooms



City & Guilds
 Qualified

- Full Bathrooms Installations inc Design, Supply, Tiling
- All General Plumbing work from : Leaking Showers
 Dripping Taps • Toilets not flushing • Radiators • Drains

Call Mark for a **FREE** no obligation quote **01525 220994**
 All work fully insured and guaranteed. **07842 653832**

Barry Cato
Motor Repairs

— Est. 1981 —

Servicing, repairs and MOT's arranged
Workshop at:
 r/o Norfolk House Farm, Harling Road
 Eaton Bray, Dunstable, Beds, LU6 1QY
Tel: 01525 221681 (workshop)
07836 650015 (mobile)

30 Years Experience
Domestic & Commercial Security



Burglar Alarms
Redcare Monitored Systems
Intercoms
CCTV
Access Systems
Locks



CERTIFICATE NO. NACG/2113

Quality Installations – Competitive Prices
Insurance Approved **Free Surveys**

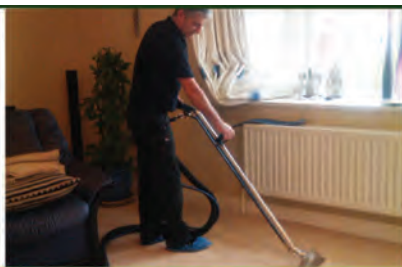
AAA SECURITY

01525 378222

Email: sales@aaasecurity.co.uk

www.aaasecurity.co.uk





Local family run business - Not a franchise

All chemicals used are Eco-friendly, non-toxic, non caustic and non allergenic
All work guaranteed and fully insured

All products are Child, Pet and Pregnant Safe

- Ovens & Hobs
- Extractor Hoods
- Microwave Ovens
- Agas
- Fridges
- Carpets
- Rugs
- Upholstery
- BBQs
- Freezers



☎ 01525 22 19 22 or 0800 122 3393

🌐 www.ecotechovenandcarpetcleaning.co.uk

@ info@ecotechovencleaning.co.uk

Dominic Woolcott

Painter & Decorator



- Internal & External
- Plastering & Coving
- Insurance Work
- 20 Years Experience
- Competitive Rates

**For a professional job call:
01525 229682 or 07747 042879**

P. DYER ELECTRICAL

For all your Electrical & Testing & Inspection needs

- Re-wires
- Testing & Inspection
- Security Systems/Lighting
- LED & Low Energy Lighting
- Decorative Lighting
- PAT Testing
- Fuse Boards
- Fault Finding/Repairs

Fully insured, Part P registered, all work guaranteed.
Fast, friendly, reliable, local electrician. For a free,
no-obligation estimate, call Paul on:



Tel: 01525 222109
Mobile: 07850 682815



David John Harris



(Established 1992)

All Fencing Work • All Gates • Paving • Patios
Driveways • Shingle • Hedge Setting and Cutting
Grass Cutting • Turfing Specialist • Exterior
Painting Service • Sheds Small Building Work
Trees & Shrubs Supplied

Tel/Fax: 01525 221745
Mobile: 07889 143713

WASHING MACHINE REPAIRS

ALSO
DISHWASHERS, TUMBLE DRIERS,
AND ELECTRIC COOKERS



Call
ANDERSON D.R.S.

01582 665764

www.andersondrs.co.uk
SALES AND RENTALS AVAILABLE



GYM & TONIC

WANT TO GET FIT, HAVE A
HEALTHIER LIFESTYLE & IMPROVE
THE WAY YOU LOOK & FEEL?

The following can be provided in our
Gym in Edlesborough or in your home

- * A Health & Fitness Consultation *
- * Personal Training * Massage *

Ruth Anderson Dip. PT & ST, Member of: Inst of Sports
Therapists & Register of Nutritional Therapists

Tel:01525 223074 Mob:07812 163979



For all your painting & decorating requirements
 Domestic and Commercial
 call Max for a free estimate with no obligation
maxbro@btinternet.com

Abbott Flooring

- Carpet & Vinyl
- Laminate & wood flooring
- Domestic & commercial
- Supply, fitting & adaptations
- Next day delivery
- All work guaranteed
- Free no obligation quotes
- No job to small

We provide a friendly, professional service at very competitive prices. If you require us to supply & fit or you just need some flooring fitted then give us a call.

Telephone 01525 220249
 Mobile 07958 244536



High Street Hair

66 High Street , Eaton Bray, Nr Dunstable, Beds. LU6 2DP

01525 221252

www.highstreethair.co.uk

Monday	Closed
Tuesday	9 - 6
Wednesday	9 - 6
Thursday	9 - 8
Friday	9 - 8
Saturday	9 - 5

A Professional modern salon, Providing
 Quality hair & nails services for the whole family.



JESSICA



TIGI®

think car, think...

smartAUTOGROUP



Established locally for over 10 years

Car servicing, M.O.T & repairs
Bodywork & maintenance
Mobile car body repairs
Accident & vandalism damage
Alloy wheels, scratches, dents, stone chips & scuffs
Fully equipped bodyshop & workshop
Complete diagnostic equipment
Dealer trained master technicians
Genuine parts



Competitive pricing – up to 50% cheaper than main dealers!

£10 off with this advert

Work Guaranteed • Free Vehicle Collection & Delivery • Customer Pick-Up & Drop-Off

Call us on **01582 664772** or visit www.smartautogroup.co.uk

Units 17 & 18a, Icknield Way Farm, Tring Road, Eaton Bray, Dunstable LU6 2JX



Bathrooms, Design & Installation

Tiling • Heating • Powerflushing • Taps • Leaks

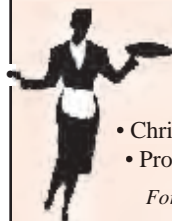
Call Outs • Free Estimates Given



01525 222145



07971 559185



Patricia's Cuisine

Catering For All Occasions

- Buffets, Dinners •
- Christenings, Weddings, Funerals •
- Promotions & Business Lunches •

For Enquiries & Menu

Meadside Farm, 104 High Street,
Eaton Bray, Bedfordshire, LU6 2DP

Telephone: 01525 222174

P.J.BRINKLOW

Electrical Contractor

01525 220469

07860 781330

**43 Pebblemoor
Edlesborough**

pinstripes signs
pinstripes graphics
pinstripes clothing

01525 220485
07973 167779

BUSINESS CARDS

www.pinstripesigns.co.uk

find us on facebook
pinstripes signs graphics clothing

Mark Janes Contracts

**Felt Roofing - All Roofing Repairs
and Property Maintenance**

FREE ESTIMATES



t: 01442 877528

m: 07841 343470

e: mark.janes3@btinternet.com

Established 25 years

*Approved Contractor
for Local Authorities*

For all your building needs look no further



BRIGGS



BUILDING & CARPENTRY SERVICES

Established 1981

For a professional, friendly service call:

(01525) 221767

(07970) 214439

Domestic & Commercial

Extensions
Renovations
Conversions
Alterations

New Builds
Roof Repairs
Kitchens
Bathrooms

Patios
Driveways
Decking
Garden Walls

Mini Digger, Skip Loader and Dumper Hire

All Work Guaranteed

Free Estimates

Changes to Bus Services from 4th January 2016

In order to meet the requirements of the Medium Term Financial Plan which includes a reduction in the Local Bus support budget we have reviewed a number of subsidised bus services and identified journeys that can be revised or withdrawn with a low impact on regular passengers.

These journeys are largely at the beginning or end of the operating day and, when the "positioning" mileage the bus also needs to do is also taken into account, we will save over £10,000 p.a. I would point out that there are significant numbers of passengers travelling at other times on these services, both on peak time journeys and during the middle of the day and these journeys remain in place.

Service 162 Stewkley – Leighton Buzzard - Edlesborough

- 14:25 Bletchley to Leighton Buzzard **Saturday journey withdrawn**
- 15:00 Leighton Buzzard to Edlesborough **Saturday journey withdrawn**

An average of 1.5 passengers per day use these journeys on Saturdays.

Service 164 Aylesbury – Cheddington – Leighton Buzzard

- 16:30 Leighton Buzzard to Aylesbury **on Monday to Friday will run as far as Cheddington**

There are no regular passengers travelling beyond Cheddington

- 16:30 Leighton Buzzard to Aylesbury **Saturday journey withdrawn**

There are no regular passengers travelling.

- 17:45 Aylesbury – Leighton Buzzard **Monday to Saturday journeys withdrawn**

All regular passengers can use other services.

Service 175 Thursdays only (Edlesborough – Dagnall – Hemel Hempstead)

- 09:00 return journey to Hemel Hempstead **will be withdrawn**

An average of only 6.7 passengers use this weekly service and all villages have alternative buses to Aylesbury, Tring or Leighton Buzzard.

Please note that Service 153, 154 & 167 continue unchanged.

Further information will also be available on the buses and on the BCC website www.buckscc.gov.uk/transport



Dunstable District Orbit Club

Dunstable District Orbit Club held a quiz night at Northall Village Hall on 17th October. 11 teams took part and over £700 was raised and will be split between three charities:

- Cardiac risk in the young for heart screening
- Arthritis Care
- Green House Mentoring - who help young people with problems who need basic social skills and self esteem

The money will be added to the charities throughout the Orbit year.

Orbit is a social and charitable club and we meet every first and third Tuesday of the month at Dunstable Rugby Club at 8pm. You will be given a warm welcome. For more information about our club, contact 01525 222441 or visit our website www.orbitclub.org.uk/dunstable.

✉ Jill Richards, Publicity Team

Edlesbray Leisure Fellowship (ELF)

Hello everyone,

Autumn has arrived, Halloween has gone, Guy Fawkes night is over but Christmas will soon be here. Beautiful coloured leaves are falling, and plants are fast going to sleep for the winter. However, red berries are appearing to delight us.

There will be NO walk in December. The next one is on January 25th 2016.

The walk on Monday October 26th was led by Brian F. In pleasant weather, the group began at Whipsnade common and took the following route:- through the Church grounds to join Studham Lane, then the Zoo Boundary, Crossing Whipsnade Park Golf Club, through Mason's Plantation to Studham Village Green, then via Studham Church and back to the start. The distance covered was 4¾ miles.

Our Christmas Lunch on December 17th will be taken at The Halfway House, Dunstable. A report will be in the first edition of Focus in 2016.

A report of the walk on Monday November 23rd will also be in the first edition of Focus in 2016.

We wish everyone a Pleasant, Peaceful Christmas and we must all try to remember the reasons why we celebrate this Festival.

Also, we wish everyone A VERY HAPPY NEW YEAR 2016.

Whatever your plans are, ENJOY.

December/January Dates

Thurs Dec 17th

Lunch Halfway House. Dunstable. 1p.m.

Mon Jan 25th 2016

Walk from church 9.30a.m.

Eaton Bray Methodist Church

Our visiting preacher on the first Sunday in October was Colin Quine, who drew his message from the life of Elijah, encouraging us to quiet, prayerful faithfulness which makes things work. On the second Sunday, Karen Drayton led us in a lively Cafe Worship and set up a challenging discussion on our attitude to possessions, reminding us to always be alert to material and other things which block us from full commitment to God. On the third Sunday, Robin Gurney made a welcome return to our pulpit. He fascinated the children by showing them a 'Promise Box', a family heirloom containing tiny scrolls bearing promises from the Bible. His message to the adult congregation concerned the difference between worldly greatness and spiritual greatness; Christians achieve stature in the eyes of God, not by seeking to enhance their own position but by serving others. Our Communion Service took place on the last Sunday, led as usual by our Minister, Rev Nigel Wright, who talked movingly of supporting our fellow human

beings and asked us the searching question, "Do we always do enough?"

Our Saturday Cafe Community restarted in October and was a happy, friendly event with a colourful craft stall, full of beautiful and skilled work for sale. Thanks to all who helped or attended.

Dates for your Diary:

Coffee Morning and Craft Sale

Saturday 5th December 10am – 12 midday

Carol Service

Sunday 20th December at 10.30am



A 'home-from-home' childcare provider dedicated to enriching children's lives through learning and play

pacey Member

Ofsted Registered Childminder
Eaton Bray
Contact Tania Tel: 07818 088 481
childmindingeb@yahoo.co.uk

Dick Whittington

Comes to Eaton Bray

A purrrfect Tail of Guaranteed Family Fun

Last year we gave you a beanstalk that grew right before your eyes; this year we give you a cat with super powers. It can only mean one thing, the village panto is back... Oh yes it is!! Along with some of last year's favourite cast returning to the stage, this year's panto also welcomes some new local familiar faces to the cast to give you this year's sparkling performance of Dick Whittington, the tale of a penniless boy and his loyal cat on their way to London (via Eaton Bray and Edlesborough!) to seek his fortune. I would like to write that his journey will be fairly straightforward but I've heard there's something lurking in the water at the ford in Edlesborough ready to stop young Dick's journey short.

Come and cheer, boo and sing along with us the last weekend of January as our magical story takes you to exotic lands and faraway places with plenty of slapstick comedy and dazzling dance routines and of course plenty of audience participation and find out if Dick ever makes it to London.

You can find out more and how to book tickets at: <https://www.facebook.com/curtaincallLB/>
Elle Laird

**Although we have already started rehearsals we would always be happy to welcome new members to join the chorus or backstage to help us with costumes and set design. We rehearse on a Monday night in Eaton Bray village hall from 8pm and would love you to join us.*

proudly sponsored by Christopher Pallet

Curtain Call
Theatre Group
present

Dick Whittington

The family pantomime adventure
Written by Gavyn Lugsden

Eaton Bray Village Hall

For tickets go to: www.curtaincalltheatregroup.co.uk

Fri 29th Jan 7.30pm

Sat 30th Jan 2pm & 7.30pm

Sun 31st Jan 2pm & 6pm

Tickets: £7 Adults
£5 Concessions

Stanbridge Logs

SEASONED
HARDWOOD

LOGS

CONTACT

07835175402

OR

stanbridgelogs@gmail.com

Stanbridge Logs


All Saints' Church, Dagnall

Services in December 2015 & January 2016

Sun.6th Dec.	9.00 am	Eucharist
	10.30 am	Morning Service
Sun.13th. Dec.	10.30 am	Morning Service
Sun. 20th Dec.	3.00 pm	Dagnall Village Carol Service
Christmas Day	9.00 am	Eucharist
	10.30 am	Family Service
Sun. 27th Dec.	10.30 am	Carol Praise
Sun. 3rd Jan.	3.00 pm	Covenant Service
Sun. 10th Jan.	10.30 am	Morning Service
Sun. 17th Jan.	10.30 am	Family Communion
Sun. 24th Jan.	10.30 am	Family Service
	3.00 pm	United Service for the Week of Prayer for Christian Unity at St Mary's, Eaton Bray
Sun 31st Jan.	10.30 am	Morning Service
Sun. 7th Feb.	9.00 am	Eucharist
	10.30 am	Morning Service

Sunday School meets each Sunday at 10.30 am except when there is a Family Service.

Appledown's Rescue Dog of the Month



This is **Oberyn Martell**, a German Shepherd aged about 5 years. Even though life has not been kind to him, Oberyn has a lovely temperament. He needs a special home with experienced understanding owners

who will help him to gain confidence. He needs plenty of company but would not be suitable for a family with children younger than teenagers. Oberyn needs to be an only dog. We are sure this lovely boy will blossom in the right home.

If you feel you could offer Oberyn or any of our other dogs a loving and secure home, please call in at the kennels any day between 10 a.m. and 4 p.m. Our staff are happy to offer advice and information. Please note that we have restrictions on rehoming dogs to families with children under 7 years of age. Full details of the rehoming process can be found on our website or call the kennels.

**Appledown Rescue and
Rehoming Kennels
Harling Road, Eaton Bray
Beds LU6 1QY**

Call 01525 220383 or e-mail:
appledown.kennels@btinternet.com
Website: www.appledownrescue.co.uk

Follow us on Facebook!
Reg Charity No. 1116848

NORTHALL BAPTIST CHAPEL

Chapel Lane, Northall

(just beyond the 30 speed limit signs on
the road towards Leighton Buzzard)

Everyone is welcome to our Sunday
worship each week between 11am and
12.30pm including tea/coffee and time to
talk together.

For more information contact:

John Hazell 01525 218142

Email northallchapel@btinternet.com

There has been a Baptist Chapel in Northall
for more than 200 years. Today we continue
to seek to worship God, serve him in our
daily lives and support and encourage one
another in the difficult and the joyful times.

New Year's Eve Party

at

Bellows Mill

Eaton Bray
LU6 1QZ

BOOK NOW

10% discount for
parties of 6 or more
who book before
7th December

8.00pm for 8.30pm until 1am

Tickets: £60

(All profit will go to charity)

Bring your own wine
Pay Bar

Glass of champagne at midnight

Adrian on Smooth Saxophone
8-9pm

DJ Andrew
10.30pm to 1am

MENU

Canapés:

Buffet (served hot)

Spiced and Glazed Ham with Cumberland Sauce
Salmon Fillet with Parmesan Crust, served with a Lemon and Herb Sauce
Vegetarian Option: Spiced Puy Lentils with Roasted Squash and Halloumi
Selection of vegetables

Puddings:

Meringue Roulade filled with Cream, Caramel and Bananas
Caramelised Lemon Tart with Pinenuts
Compote of Red Fruits

Cheeseboard

For special dietary requirements email: celia@celiaburnett.com
or text: **07968 800990**

For tickets call **01525 220548**
or email: bellowsnye2015@yahoo.co.uk

Dress to impress

Adults only

The Friends Of The Church On The Hill, Edlesborough

Want to learn more about us?

St Mary's Church Edlesborough is owned by a charity known as The Churches Conservation Trust (CCT). It is classed as a 'redundant' church, the ownership transferred from the Church of England to the CCT and the congregation was combined with the Church of St Mary's Eaton Bray. The church is still consecrated and there are several services held each year.

On the 1st March 2012, a group of local people, interested in helping to support the preservation of the building, met to learn more about the CCT and ideas for supporting the church. They formed a group known as The Friends Of The Church On The Hill, Edlesborough (FOTCOTHE) to help to meet the long term objectives of the CCT. We are not a religious organisation – we are a mixed group which includes the vicar and other committed Christians, Atheists, Agnostics and others. All are welcomed to our group regardless of their beliefs or lack of them. Our aim is to support this historic building far into the future.

When the EDaN Parish Plan was launched in 2008 one of the teams was set up to 'Beautify' the villages of the parish. That team proposed a plan to floodlight the church. This built on a plan originally proposed by Edlesborough Parish Council several years before.

In discussions with the CCT they made it clear that they were not prepared to support a 'one-off' project for the church. They wanted a long-term plan to engage the community and bring more people into the church. They also want the church open all day, every day. Since forming, the Friends have developed a long-term plan with the CCT to bring more people into the building. This is important as some of the government funding for the

charity is dependent on having the church open and used. The CCT has over 340 such churches across the country and they have been put to a variety of community uses. One in Bristol is used to train trapeze artists! The Friends of the Church on the Hill, Edlesborough has organised an annual music Festival in June that has been well attended for the past three years. Additionally, the Friends have organised the 'Heritage' event in support of the national 'Heritage Open Days' initiative. On those days at the church you will find details of the history of the parish and genealogy information on the people of the parish. The Friends also clean the church before each major event. The Friends have also planted daffodils on the bank around the War Memorial.

As part of EDaN, the Friends come under the umbrella of the parish council. The Friends group has its own trustees and has a membership scheme for those who would like to donate annually. The scheme is approved by HMRC for 'gift aid'. If you are interested please contact the Treasurer, **wyn.johns@gmail.com**

By the time you read this the floodlighting project will have been implemented. The lights were turned on at approx. 6pm on Saturday 14th November. It has taken years of negotiation with the CCT but we finally got there. Significant funding came from the parish council since it was their idea in the first place. Added to that was money from the EDaN Beautification Team's Fire-walking event that took place some years ago plus money raised by Friends events.

All the income and expenditure for the Friends is managed by the Friends for the benefit of the church. External scrutiny

comes from the EDaN Treasurer and the parish council as all transactions are recorded in the parish council's monthly financial statements. The parish council holds the funds raised by all the EDaN teams including the Friends' monies. Each team's costs and revenues are stated separately. For some events, the funds raised are donated to other charities. For example, the money raised at the Floodlighting switch-on went to Children in Need. Most of the funds raised by the Friends will be used to improve facilities at the church. In addition to the Floodlighting the plans include opening the tower to visitors, installing toilets, improving car parking provision for the Festival at the church, and much more. The Friends, with the help of Community Service people have also made a start on clearing scrub from the churchyard with the side benefit of revealing old gravestones. We also plan to create an online map together with names of all the gravestones that can be identified.

To keep up to date with all our activities and to explore the church online check out our Facebook page. <https://www.facebook.com/Friends-of-the-Church-on-the-Hill-Edlesborough> and don't miss our website

either! <http://www.edlesboroughchurch.org.uk>

You do not have to be part of the formal membership scheme to be a member. We need help of all sorts to put on events, clean the church, help with the projects. To get involved please contact us via our Friends administrator, chrisroddis@hotmail.co.uk

If you would like to hire the church for an event please contact Abigail Rawlings, Administration Officer with the CCT. To contact Abigail please call 01223 324442 or email her on arawlings@thecct.org.uk

The next event is the Carol Service on Saturday 19th December at 3pm. Mince pies etc. provided by the Friends. See you there!

The Friends would like to acknowledge the continued support of Edlesborough Parish Council on the grass-cutting of the churchyard and other activities to support the church. We also wish to acknowledge the outstanding support from Jack and Joan Horne as well as the ladies who organise the church openings on the first Sunday of each month in the summer. Jack, in particular, has been the local contact and caretaker for the church for many years.



Eaton Bray Poppy Appeal

Thank you to everyone and to every business that contributed to the 2015 Eaton Bray Poppy Appeal. The total from the house to house collections and the boxes on the counters in the village came to £2,259.69. This is about £54 less than last year, which was a record year probably because that appeal took place in the centenary year of the start of WW1 and there was an awful lot of publicity about it. This year's appeal is still a sterling effort from everyone involved in Eaton Bray – especially those of you on the team who went out and

knocked on doors.

Our thanks also go to those who have stopped knocking on doors and a big welcome and thanks go to those who knocked for the first time this year.

We are not sure if the annual Royal British Legion Poppy Appeal is organised in or covers Edlesborough in the way that Eaton Bray is. If any Edlesborough resident is reading this and fancies becoming an organiser, then please phone us on 221137 so that we may meet and show you what is actually involved.

✍ Roger and Helen Wilkinson (Poppy Appeal Organisers – Eaton Bray)



News from the Lions Den...

We can't hide from the fact that Christmas is just around the corner now and as a Lions club, this is always one of our busiest times. Community service projects are an important part of any Lions club program and we try and offer a wide range to cover all age groups. This month will be all about Christmas for us. Santa knows how reliable Lions are so he has asked us to help him reach all of the children in Eaton Bray, Edlesborough and the surrounding villages. He has given us special 'Santa Mail' post boxes which we will be putting in convenient locations. Children wanting to write to Santa with their wish list can deposit their letter in these boxes and a personalised letter from Santa will be sent by return.

There will be a post box in Edlesborough store, Eaton Bray store, Eaton Bray Academy & Edlesborough School

Please, where possible can you let us have your child's name and age so that we can tailor each personalised letter. This is a community service project that we are running so there is no charge for this service but as Santa is feeling the austerity pinch too, a stamped addressed envelope for our response would be most helpful.

In addition to this, we will be out and about with Santa and his sleigh across Eaton Bray, Dagnall and Edlesborough as Christmas draws closer giving the younger members of our community a chance to see Santa. We will be conducting bucket collections at these times with all money raised being donated back into local causes within our community.

The provisional dates for our sleigh runs (slightly weather dependent) are as follows :-

Edlesborough

Thursday 10th December

Friday 11th December

Dagnall

Monday 14th December

Eaton Bray

Thursday 17th December

Friday 18th December

For up to date information on our sleigh runs, please refer to our facebook page. As always, we are very grateful for any assistance on these sleigh run events so parents, friends or family who are able to come along for what's always an enjoyable evening, please do get in touch so we can advise you where we will be meeting for each of the nights given above.

Hopefully our efforts will make Christmas that little bit more magical this year for everyone in our villages.

The situation remains, that new members will always be made very welcome to our club so please do feel free to make contact in the usual way if you are interested in finding out more about the organisation and the work that we do by calling 01525 229656 or by emailing me at president@ebelions.org.uk. I sincerely look forward to hearing from you ...

✍️Peter

*Ordinary people
doing amazing things*

St Mary's 100 Club

Congratulations to the following winners:

October 2015

1st Prize – Celia French

2nd Prize – Philip Gadd

3rd Prize – Elisabeth Ryder

November 2015

1st Prize – Barbara Morton

2nd Prize – Rosemarie Allen

3rd Prize – Roger Wilkinson

If you would like to join the 100 Club please collect a form from www.stmaryseatonbray.org.uk/Groups/100-club or from St Mary's Church, Eaton Bray.

Thinking of Selling or Letting?



Our success is built on our reputation of excellent customer service.



www.christopherpallet.com



Offices in Edlesborough, Wendover & Aylesbury

65 Moor End, Edlesborough, Bucks, LU6 2HN ♦ T 01525 222333 ♦ F 01525 222042 ♦ E edlesborough@christopherpallet.com

IRON OUT

Complete Laundry Service
 Shirt Service
 Duvet Cleaning
 Ironing
 Free collection & delivery from home or office

01582 667332 / 07885 320042
 Email: ironout@aol.com

D NICHOLSON PLUMBING REPAIRS and INSTALLATIONS

NO JOB TOO SMALL

- Emergencies • Free Estimates
- No call out charges

Dave Nicholson

MOBILE: 07976 975604 **HOME: 01525 872335**

City & Guilds Qualified

R.J.O'CONNELL BUILDING SERVICES

EXTENSIONS, PATIOS,
 DRIVEWAYS, ROOF REPAIRS
 AND PROFESSIONAL
 DECORATING SERVICE

TEL: 01296 681323
MOB: 07855 236726

Will Kimberley Garden Services

01442 255784

Phone for a free no obligation written estimate
wkgardenservices@btconnect.com

- High hedges a speciality
- Fences erected and repaired
- General garden tidy up's
- In fact any job in the garden!

Make a Will

AND LASTING POWERS OF ATTORNEY

Protect Your Home 100%

YOU DECIDE, who is to run your affairs, who gets what, guardians etc, not the State.

MINIMISE RISK of Inheritance Tax and the disinheritance of children.

Best Price Guarantee

from specialist Solicitors and professional Will Writers since 1999

FREE HOME VISIT

For a **DAYTIME** or **EVENING** appointment call

01525 220644

www.wisechoicewills.co.uk

from
CARE FEES
and
PROBATE COSTS



Will Trusts & Probate Practice

A wise choice

MAKING A WILL HAS NEVER BEEN EASIER

ASPECT

YOUR LOCAL ELECTRICIAN
TOTTERNOE
OVER 20 YEARS EXPERIENCE

ELECTRICAL

CONSUMER UNIT UPGRADES (FUSE BOARDS)
LIGHTING - INTERIOR, EXTERIOR & SECURITY
REWIRING
NEW INSTALLATIONS
TESTING & INSPECTION

ALL WORKS TO CURRENT WIRING & BUILDING REGULATIONS
PART P CERTIFICATED & FULLY INSURED



CALL STEVE ON
07976 283969 / 01582 665068
aspect@sparky.me



EXCEEDING EXPECTATIONS IS JUST PART OF OUR SERVICE



If you're **selling, letting** or **buying** a home, make it happen with your local estate agent



01525 220605 • info@giblinproperty.co.uk
www.giblinproperty.co.uk

THE WORKTOP SPECIALIST

DELIVERING OUTSTANDING QUALITY & SERVICE FOR ALL YOUR WORKTOP & JOINERY NEEDS FOR OVER 50 YEARS

- FREE HOME MEASURING SERVICE
- CUTTING & EDGING SERVICE AVAILABLE
- VISIT OUR BRAND NEW SHOWROOM

Abbey Gate, Boscombe Road,
Dunstable, Bedfordshire, LU5 4FA

Tel: 01582 668 973 Fax: 01582 608 227
Email: sales@dunstablelaminates.co.uk
Web: www.dunstablelaminates.co.uk



@DLaminates



Dunstable Laminates



D R Property Services

Kitchens
Bathrooms
Repairs & Improvements

01525 237498
07970 260518

drpsuk.pt@gmail.com




Café masala
Exquisite Indian Cuisine

We Cater for Office or Private Parties and don't forget to try our Sunday Buffet
10% Discount on all Takeaway Orders Over £12
Fully Licensed & Air Conditioned
Open Seven Days a Week
Hours: 12 Noon to 2.30pm & 6.00pm to 11.30pm
Tel: 01525 22 22 64
63 Bower Lane · Eaton Bray · Dunstable · Beds · LU6 1RB
email: taraque@hotmail.co.uk · www.cafemasala.com

Anne Johnson D.O.
Registered Osteopath

6 Moor End,
Eaton Bray

01525 221958
07957 250682



I'M REGISTERED
Registration no.1495
www.osteopathy.org.uk

alto window cleaning

A reliable and professional service.....

- Window Cleaning
- Conservatory Cleaning
- Fascia & Gutter Cleaning
- Solar Panel Cleaning

T: 01525 234120
M: 07807 973871

AARON FENCING

ALL TYPES OF DOMESTIC & COMMERCIAL
FENCING & DECKING WORK UNDERTAKEN

FREE ESTIMATES
FULLY QUALIFIED & INSURED
PERSONAL SERVICE AT COMPETITIVE PRICES

TEL: 01582 665779
MOBILE: 07798 927272

7 STATION ROAD, DUNSTABLE, LU5 4HS

YEARDYE

Luxury Bathrooms

A family-run
business for
over 25 years

DESIGN
SUPPLY
INSTALLATION



www.yeardyeluxurybathrooms.co.uk

email: bathrooms@yeardye.com
T: 01296 706220 T: 01525 222717

Buy Direct From Our
Own Farm

Master Card

VISA

From **Ivinghoe Turf**

- Commercial & Domestic
- Small Orders Welcome
- Bark, Grass Seed & Fertiliser
- Laying Service
- Discount on Larger Orders
- Screened & Blended Topsoil
- All Year Availability
- Forklift Delivery Available



ROLAWN[®]
Approved Rolawn
Stockist

Family firm farming since 1949

ALL AREAS

Freephone :

0800 043 5061

www.ivinghoeturf.com

The Bungalow, Vicarage Farm, Ivinghoe, Leighton Buzzard

ARC Contract Services Ltd

- Painting & Decorating • Plastering
 - Wall & Floor Tiling • Door Hanging
 - Bathroom & Kitchen Installations
- 20 years experience

All work guaranteed and fully insured

Call Adrian : **01582 539179**

Mobile : **07789730580**



WESTROPE BROS.

LAWN MOWER SERVICES

ALL TYPES GARDEN MOWERS SERVICED

THE RYE, EATON BRAY

Tel: Eaton Bray 220587

Gas Boiler Servicing

Over 40 years experience

Have your boiler serviced by a **Gas Safe**
and **CORGI** registered engineer

Other services available:

Maintenance, repair and installation of all domestic gas appliances including LPG. Boiler installations, Landlord Safety Certificates and Power flushing.

Free Quotes, no call out fee, and free friendly advice on all of the above.

Edwards Gas & Heating Services

Eaton Bray



Tel 01525 220626

www.edwardsgasandheating.co.uk
stevethegas@orange.net



Vicky

The Dog Grooming Specialist
www.vickysdogcare.co.uk



With a reputation for offering an exceptional personal service



- Over 29 years of professional experience
- Trained at the London Academy of Professional Groomers to the highest City and Guilds standard
- Dorwest Veterinary Trained
- Member of the Pet Industry Federation
- Sympathetic and gentle handling of all dogs
- **FREE** Health check with every grooming session
- **No cages used! No cage dryers!**
- One to one personal attention.....loads of TLC

Where Dogs Come First!



Mobile: 07796 445416

Telephone: 01525 222775

Email: enquiries@vickysdogcare.co.uk



Committed to the highest standards of animal welfare and customer care

Over 30
Years
experience.
FREE
Quotes

Misty Double Glazing?

Over 30
Years
experience.
FREE
Quotes

**KEEP YOUR WINDOW FRAMES...
... WE JUST REPLACE THE GLASS!**

- UPVC • Aluminium • Or Wood

Because we replace just the glass the repair is a
Fraction of the cost of a complete replacement window.

BEFORE



AFTER



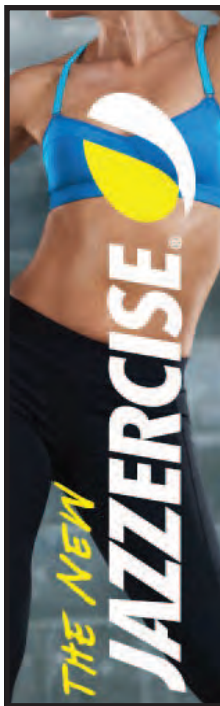
mistydoublinglazing.co.uk

QUALITY GLAZING SERVICES

01525 876808

WE ALSO REPLACE BROKEN...

- Glass • Handles • Hinges & Locks
AND REPAIR...Patio Doors & Conservatories!



**JAZZERCISE
DANCEMIXX
CLASSES
AT ST MARY'S
EATON BRAY
9.30am
THURS & SAT
AND
BREWERS HILL
DUNSTABLE
7.45pm
MON & WED**

**01525 715208
angelajazzercise
@gmail.com**

REVIVE HOLISTIC THERAPY

Holistic therapies are concerned with treatment through massage, manipulation and relaxation. They are not only treatments for one physical ailment or one part of the body, but also treat the person as a whole.

Ideal for today's stressful lifestyles.

Treatments include:

- Aromatherapy Massage
- Indian Head Massage
- Hot Stone Massage
- Reflexology
- Reiki

Vouchers are available for any treatment, so why not treat a loved one or friend as well as yourself.

Edlesborough based. For more information or to book an appointment call
Kate Meredith IIHHT, RGN, on **01525 221380**



*HPC Registered
CHIROPODIST & PODIATRIST*



(Also Central Luton surgery - open 6 days)

*Stuart Ball
Ceramic Tiler
Specialist
at all aspects of
Wall & Floor Tiling
Over 32 yrs Experience
01525 229381*



Stephen D. Janes

(Established in 1982)

**CARPENTRY, JOINERY
KITCHENS FITTED
PROPERTY MAINTENANCE
TELEPHONE: 01525 220649**

**G & J Groundwork
Ring Garry**
**01582 477568
07949 118011**

**Fencing Panels • Blockpaving • Paths
Shingle Drives • Slabs • Paving
Steps • Gardenwalls • New Patios
Relaying • Soak Aways • Drainage
Free estimates or advice • References
www.gandjgroundwork.co.uk**

Neil Hodson Associates

*BUILDING DESIGN
STRUCTURAL ENGINEERING*

**PROFESSIONAL BUILDING DESIGN,
ADVISORY AND DRAWING SERVICES**

From plans for domestic extensions
to multi-storey offices, commercial
buildings and factories.

Structural surveys, site surveying,
advice on building defects and
Feasibility Studies

Planning Applications and Building
Regulation Consents obtained.

**24 HIGH ST TRING
Tel 01442 890894 OR
Edlesborough 222462**



At Ian Waldron Photography we strive to capture images that are both relaxed and natural. We do this with little fuss or intrusion so you can enjoy one of the most special days of your lives! This is also true of our portraits which are all done on location which captures you and your family perfectly.

Ian Waldron
naturally relaxed photography

www.ianwaldronphotography.com
01525 221479
Your Village Photographer

Dagnall School

On Friday 9th October Dagnall School became Dagnall Church of England School and we welcomed Bishop Richard of Bedford to our extra special Harvest Assembly at All Saints Church, Dagnall.

The service included some spinning and dancing, a Harvest acrostic poem and some prayers written by the children as well as a talk about an onion from Bishop Richard. Something for us to think about! The Bishop then blessed the school and led us from the church back along the road and through the allotments.

Once refreshed, Bishop Richard handed out a special card to each child with some wise words as a keepsake for the day. The Bishop was very interested in our small but welcoming school (any faith or no faith) and could readily see how families from neighbouring communities

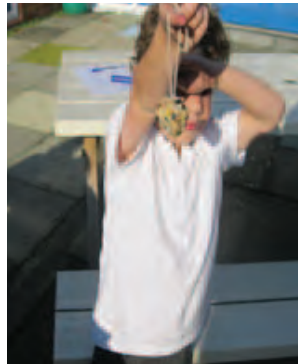
as well as Dagnall, would want to be a part of the school. If you are interested in having a look round please contact Mrs Bovington on 01442 842473

Our thanks to all the families and villagers who have supported us in the consultation process and today. It was lovely to see so many of you celebrate with us at Church.

Edlesborough School

The Year 1 children have enjoyed learning about animals through our 'Fur, Feet and Feathers' topic. As they were aware that the Harvest had just passed, making less food available for animals, they made

bird feeders to help. The children enjoyed using the lard and seeds to make these and took them home for their gardens. You could try this yourself to help the wildlife in your garden this winter!



Market your home with us and receive an exclusive **free microsite** for your property to be shared across your chosen social networks.



Visit **mandmproperties.tv** to find out more.
The only Estate Agent in Leighton Buzzard to offer this unique and unrivalled service.
Call us for more details

Tel: 01525 377733 | mandmproperties.co.uk | mandmproperties.tv

Live a healthy & active life

Free 10 minute advice chats with our Chartered Physiotherapists & HCPC Registered Podiatrists

PHYSIOTHERAPY
PODIATRY & CHIROPODY
PILATES
ACUPUNCTURE
SPORTS INJURIES
MASSAGE
WOMEN'S HEALTH & PREGNANCY CARE

St. Judes 
physiotherapy, health and well being
01525 377751 
enquiries@stjudesclinic.com
www.stjudesclinic.com

J Able bathrooms

New Showroom NOW Open in Edlesborough

DESIGN

Free CAD design of your bathroom, This will give you a photo realistic finished plan of your design.

SUPPLY

Come and browse our display suites, This will help you decide on the perfect bathroom for your needs.

INSTALLATION

Our installations are of the highest standards!
We take pride in making you delighted with the finished result.

We have suites in a wide range of styles to suit your budget.
Drop in or ring to make an evening appointment at the showroom or a home visit at your convenience.

Opening Times

Monday. 9am-5pm
Tuesday. 9am-1pm
Wednesday. Closed
Thursday. 9am-1pm
Friday. 9am-5pm
Saturday. 9am-1pm
Sunday. Closed

T: 01525 220043 M: 07891 449077

3 Summerleys, Edlesborough, Buckinghamshire, LU6 2HR
W: www.jablebathrooms.co.uk E: ableplumbing@hotmail.co.uk

fancy a break?



LUXURY 3 BED, 2 BATH APARTMENT APPROX 1 MILE FROM CENTRE OF PUERTO BANUS MARINA, SPAIN. 45 MINS EASY DRIVING FROM MALAGA AIRPORT.

ALL MOD CONS INCLUDING AIR-CON, SAT TV, FULLY EQUIPPED KITCHEN, SWIMMING POOLS, EXCELLENT CLUBHOUSE & TENNIS COURTS.

MANY GOLF COURSES AND ALL WEATHER BOWLING GREENS NEARBY. CLIMATE IDEAL FOR HOLIDAYS THROUGHOUT THE YEAR. RATES £350 - £750.

CALL PETER OR CELIA ON 01525 220173 OR VISIT OUR WEBSITE AT WWW.479LOSANARANJOS.CO.UK.

Plumm

PROPERTY

'A fresh approach to selling property' ...

IN AND AROUND YOUR VILLAGE

Phone now for a free, no obligation, Valuation of your Property

01296 660230

01442 863737

www.plummproperty.co.uk

Absolutely Plastered

**DOMESTIC/COMMERCIAL,
CLEAN AND RELIABLE SERVICE,
FREE ESTIMATES, FRIENDLY ADVICE**



- * Plastering & Coving
- * Floor Screeding
- * Pebbledashing & Rendering
- * Dry Lining
- * Cornices & Mouldings
- * Insurance Work Undertaken

CALL NICK CONWAY ON

Mobile: 07751 830716

Tel: 01296 688981

6 Cotes Way, Wing, LU7 0RB

Established over 20 Years

Duncan Tomblin

TREE SURGEON

Forestry Contractor • Tree Felling
Crown Reduction & Thinnings
Deadwooding • Hedge Cutting
Stump Grinding • Site Clearance
Private Agriculture Fencing Contractor
Chipper & Stump Grinding Hire
Digger Hire

**FULL PUBLIC LIABILITY INSURANCE
FREE ESTIMATES**

'The Best Choice For Your Tree'

TEL: (01525) 221946

MOBILE: (07802) 410728

12 Greenways, Eaton Bray, Beds

Christmas at St Mary's: Crib Festival – St Mary's, Eaton Bray

**10am - 5pm Saturday 12th &
12 – 5pm Sunday 13th December**

**Displays of cribs, nativities and crèches,
large and small**

Refreshments served all day - Lunches - 12.30 – 2.30pm



Admission FREE



Saturday 12 December

10am – Nativity performed by children from Eaton Bray Academy

10.30 – 11am - Mary and Joseph travel to St Mary's

11am – 12 - Nativity performed by children from

Dagnall School and Dagnall Under 5s Playgroup

11.30 visits by local shepherds

Story telling:- 2 pm – Mary and Joseph

3 pm – The shepherd's story

4 pm – The wise man's story



Sunday 13 December

Story telling:- 2 pm – Mary and Joseph

3 pm – The shepherd's story

4 pm – The wise man's story

6pm – Festival of lessons and carols



Christmas Eve Candle Services

4.15pm
& 6pm

St Mary's Church
Eaton Bray



Christmas Fayre

4th December 2015

2.00pm

Edlesborough School

It's coming to that time of year again where we all wonder what we are going to give our friends and families for Christmas. Let Edlesborough School take all your worries away with our amazing Christmas Fayre. All goods are made by our own students. This Fayre has proved to be very popular in the past so come early to avoid disappointment.

Dagnall School &
Dagnall Under Fives

Christmas Fair

Saturday 5th December

Dagnall Village Hall

1pm-3pm

Lots of festive fun for everyone

Visit Father Christmas in his magical grotto, games, crafts, tombola, raffle with amazing prizes, refreshments, homemade cakes, gifts and craft stalls, face painting, tattoos, live music and lots more.

The raffle draw will take place in the Red Lion, Dagnall from 8pm.



**Welcome to
Eaton Bray Academy**

Telephone: 01525 220468
Email: admin@eba.ec

A wonderful place to be




Patricia

Mobile Beauty Therapist

Massage & Beauty Treatments

01525 237781

07866 126510 Fully Accredited & Insured



McTimoney CHIROPRACTIC



Margie Craib BSc BHSI DC AMC MMCA
Human and Animal Treatments

Ashridge Farm, Ringshall, Berkhamsted, Herts HP4 1ND
Telephone: (01442) 842729

General Chiropractic Council Registration No. 293



Virtual administrative
support to businesses &
private individuals

Website hosting

Domain registration

Desktop publishing

01525 229695

Email:

enquiries@morenassociates.co.uk

www.morenassociates.co.uk

ADRIENNE'S PRIVATE HIRE

Call for a FREE quotation
Book early to avoid disappointment
Very competitive prices

Airport Transfers
& Private Hire

07980 039715

Our executive Cars, 6 seater Minibuses and
lady driver are all available



J.G.S. Metalwork & Son

Specialists in Gates
& Gate Automation

Access Control • Security Grilles • Railings
Balconies • Stairwells

www.jgsmetalwork.co.uk

Call in to discuss your ideas

High Street, Edlesborough LU6 2HS

Tel: 01525 220360 Fax: 01525 222786

GRASS ROOTS GARDEN MAINTENANCE

TREE SURGERY, HEDGE PRUNING,
SELECTION SUPPLY AND PLANTING OF
TREES, SHRUBS AND HEDGES.
REGULAR MAINTENANCE/ONE-OFF JOBS
(Fully Insured)

Brian McMahon NCH (Arb)

01525 221960



Edlesborough Flowers

Flowers, Gifts, Jewellery
& More...

2 High Street,
Edlesborough,
LU6 2HS

Tel: 01525 221920

Christmas 2015 in Dagnall

Friday 4th December

Father Christmas Around

the Village, 6.30pm



Father Christmas Switches on

the Village Hall Lights, 7.30pm

Other Christmas Events in Dagnall

Christmas Bingo, Weds 2nd December

Christmas Fair, Saturday 5th December

Dagnall Children's Party

Sunday 6th December (Dagnall children only)

Carol Concert, Sunday 13th December

Dagnall Over 60s Party

Tuesday 15th December (Members only)

Best decorated house competition

Saturday 19th December

Carol service at the church

Sunday 20th December



NEW YEAR CONCERT

9 January, 2pm

when **Vienna comes to Eaton Bray!**

One of the country's top bands – 2013 National Silver Award winners - Aylesbury Concert Band perform New Year favourites including: Trish Trash Polka, The Blue Danube and the Radetzky March.

*Tickets priced £7.50 (children free)
from the Box Office on 01525 222283*



QUIZ NIGHT

with a

Light Buffet Supper

£10 per person

SUNDAY 6th DECEMBER 7.00pm

At EDLESBOROUGH MEMORIAL HALL

Bring a Bottle, Bring Your Brains

↳ Bring your Team (max-8 per team)

Purchase Your Tickets from JANES FLOORING

With cash or cheque only

Or Contact Gary: admin@edpav.org

Raising funds for the new pavilion



Thursday 10th December 6-8pm

Edlesborough Flowers

JANES & Seventh Heaven

Will be hosting a

Christmas Shopping Evening

With Christmas Gifts Ideas & Decorations

Come & enjoy a glass of wine and a mince pie

And support your local little shops



ILLUSTRIA

Kennels & Kathotel

Offering your pet a fully licensed Dog and Cat boarding service.

Purpose built Dog kennels

Individual Cat chalets with outdoor exercise runs

All in pleasant country surroundings

01582 ~ 665343



ILLUSTRIA
Springfield Road
Wellhead
NR Dunstable Beds
LU6 2JT



Proprietors

Mick, Denise and Michele Garrod



The Gentleman Gardener

Let your local RHS qualified gardener make your garden beautiful, from simple garden maintenance to total redesign of your garden.

Please call Barry on
01525-222451 or
07541196384

to pop round for a free chat.

N.D.S.

General Building & Plumbing
(25 years experience)

- Roofing; Installer of UPVC guttering, soffits & fascia boards
- Kitchens & Bathrooms fitted
- Property Maintenance
- Fencing • Patios & Block Paving
- Gazebos • Garden Structures

Tel: 01525 221470

Mobile: 07946 626564

FREE ESTIMATES

...

**ALL WORK CONSIDERED
NO JOB TOO SMALL**

For a top quality
decorating job call

Marc Flack

01525 223166

Trading locally for 10 years
References are available

Make your house a home with blinds and awnings from

**VANSAR
BLINDS**



www.vansarblinds.co.uk



- Free No Obligation Measuring And Quotations
- All Blinds Made To Measure
- Choose In The Comfort Of Your Own Home Or Workplace
- Family Run Business
- Large Range Of Quality, Affordable Fabrics And Colours To Choose From

YOUR LOCAL EXPERTS
**OVER
25
YEARS**

Call: 01525 220477 or 01582 699565 E: sales@vansarblinds.co.uk

Financially Prudent (IFA) Ltd

23 The Green, Edlesborough, LU6 2JF

Your local IFA for impartial Personal or Corporate advice on:

- Mortgages
- Pensions & Annuities
- Insurance
- Savings & Investments

Call Paul Pearce on 01525 220480 or email paul@finpru.com for a no obligation initial discussion



Financially Prudent (IFA) Ltd is authorised and regulated by the Financial Conduct Authority



Established Village Dog Grooming Service

Professional and Affordable
Large breeds welcome
Trained in Hand Stripping
Nails, Ears and Glands included

Contact Ulrika Tel 01525 211592
5 Mill Road, Stanbridge, Beds. LU7 9HX
www.abfabgrooming.co.uk

Spinney Landscapes & Gardening Services

All Aspects of Grounds Maintenance

Weed Control • Driveways & Patios
Lawn Care & Scarifying • Fencing
Turving • Tree Work
Snow Cleaning & Gritting

Tel: 01582 872084 Mob: 07876 500292
Email: chambo.1628@btinternet.com

Celebrate Christmas with
EATON BRAY PARISH COUNCIL
Enjoy ...



Christmas Carols & Brass Ensemble Around The Village

Friday 18th December 2015 - From 7:30pm

To help us all get in the Christmas spirit, the Parish Council have again arranged for the brass ensemble to play Christmas Carols around Eaton Bray on the evening of the 18th December.

The evening commences from 7:30pm at Three Corners moving to Market Square/White Horse at 8:15 pm.

All adults & children are urged to come outside and have a good old Christmas sing-a-long.

(song sheets will be available but please bring your own torch/lantern)

CELEBRATE IN STYLE



**WE ARE
MACMILLAN
CANCER SUPPORT**

MAMMOTH QUIZ – EVENT DETAILS

The Lions Club of Eaton Bray & Edlesborough are delighted to partner MacMillan Cancer Research on the Mammoth Quiz 2016

Friday 26th February 2016

Dagnall Village Hall

7.45pm

Teams of 8 players - £10.00 per person including a hot supper

Cash bar available Raffle Prize for winning team

All profits raised to be donated to MacMillan Cancer Research

HELP IMPROVE THE LIVES OF PEOPLE AFFECTED BY CANCER –
JOIN YOUR LOCAL QUIZ EVENT

Macmillan Cancer Support, registered charity in England and Wales
(261017) Scotland (SC039907) and the Isle of Man (604)

News from Santa



All GOOD boys and girls should now be compiling their wish list for Christmas for presents from Santa

These letters can be posted in Santa's special post boxes that can be found in Edlesborough Post Office Shop, Eaton Bray store and Dagnall Farm Shop

The Lions will then transport every letter to Santa for him to respond to.

Parents, please refer to our news article in this magazine for more details



CHRISTMAS TREES FRESH FROM THE FARM

**Top Quality
Christmas Trees
Direct From The
Grower**

**Look out for the
Giant Father
Christmas**

GI Rogers & Son

**We are situated on the
B4506 between Ringshall
and Dagnall**

Tel: 01442 842299

** winner of the best spruce 2009 **

10% OFF ANY TREE WITH THIS ADVERT

S M Reilly & Son Ltd

General Builders & Contractors



Turning Your House into
a Home Since 1987

*All aspects of the building
trade undertaken*

- *Extensions*Hard Landscaping*
- *Windows, Doors & Conservatories*
- *Fitting of Aluminium Bi-fold Doors*
- *Kitchen & Bathrooms*Drives*
- *Loft Conversions*

01525 221740
07970 637511

ALAN BOULT
(Light Haulage)



- TRANSPORT ● COLLECTION
- DELIVERY SERVICE
- SINGLE TO MULTIPLE ITEMS
- REGULAR CONTRACTS WELCOME

Tel: 01296 427182

Mobile: 07770 237745

Email: boulton586@btinternet.com

A McClelland
Pest Control



FOR FAST RESPONSE CALL:
mobile 0777 494 8415 or office 01582 872158

specialists in: wasps - bees - ants - hornets
fleas - cockroaches - bed bugs - pigeons - magpies
rabbits - rats - mice - moles - squirrels - foxes - mink - feral cats

UNMARKED VEHICLES

For further information please call
or email a.mcclelland_pestcontrol@hotmail.co.uk



Tel: 01525 221847
sales@act.uk.com



GENERALMECHANICALSERVICESLTD

VEHICLE SERVICING AND REPAIRS



**MOTs • MOT REPAIRS • SERVICING
DIAGNOSTICS • TRACKING • AIR CONDITIONING
TYRES • CAMBELTS • COLLECTION & DELIVERY
WELDING & FABRICATION • BATTERIES**

All vehicles - all mechanical work!

1 HONEYWICK LANE, EATON BRAY, LU6 2BJ

reception@general-mechanical-services.co.uk

www.general-mechanical-services.co.uk



01525 222876



Best of mind for motorists

TEL: 01582 667924



13185

"Good reputations take years to build"

GRAHAME PRATT

Plumbing & Heating Engineers

**Plumbing & Heating
Bath & Shower Room Design and Installation
Ceramic Floor & Wall Tiling
Kitchen Installation
Small Building Works**

www.grahameprattplumbing.co.uk

Email - enquire@grahameprattplumbing.co.uk

NG AUTOS



MAKING YOU AND YOUR CAR HAPPY

CAM BELTS • MOT'S • MOT REPAIRS • HEAD GASKETS
AIR CONDITIONING • RECOVERY/BREAKDOWN
DIAGNOSTICS SERVICING • BRAKES • SUSPENSION
CLUTCHES • GEARBOXES • TYRES • WHEEL BALANCING
WHEEL ALIGNMENT COLLECTION & DELIVERY

CALL NICK OR GARY

01525 220850 OR 07972 198615

**SPARROW HALL FARM, LEIGHTON ROAD,
EDLESBOROUGH LU6 2ES**



Reception



Service Bays



MOT Station



Dunstable Lock & Safe Co

Locksmiths & Safe Engineers
A local family run business for over 30 years

Special Offer

5 Lever Insurance rated mortice
deadlock, supplied & fitted
Only £99.00 inc VAT

- Anti snap cylinders
- UPVC door & window locks
- Safes supplied & fitted
- Master key cutters
- Safes opened & repaired
- All locks supplied & fitted



Be one step ahead of the burglars and call us
today to discuss your security needs however
big or small

89 High Street South
Dunstable
Beds, LU6 3SF

Tel: 01582 696108

www.Dunstablelockandsafe.com

**Made to order
garden furniture & ornaments**

Call John on: **0789 506 8251**



**Makes an ideal gift
for any occasion**



David Brown

Window Cleaning

Quality Reliable Service.

Regular, Occasional or
Single Visits.

Friendly Free Estimates.

Facias, Guttering & Conservatories.

External Cleaning & Maintenance.

Fully Insured.

Phone 01582 472113

Mobile 07534 837073

D & E HINES

High-Class Butchers

Quality Beef, Pork & Lamb

Grade A Poultry

BBQ & Sausage Speciality

Renowned for 'Bunkers Sausages'

Telephone: 01525 220413

98 High Street, Eaton Bray

Eaton Bray Village Hall



- ❖ Equipped to support theatrical productions and film shows
- ❖ Large car park
- ❖ Large Kitchen with a six ring cooker, large refrigerator, hot trolley, crockery etc.
- ❖ 3 separate areas to hire to meet your needs and budget
- ❖ For more information and brochure please ring Norman on 07975 797202

- ❖ Superb venue for weddings
- ❖ Fantastic place for parties and dances
- ❖ A must for children's parties, can fit the bouncy castle inside if weather dictates!!!
- ❖ Keep fit groups
- ❖ Ideal for Club meetings or functions



Dagnall School



A Buckinghamshire co-educational school

For 4-7 year olds



Dagnall School offers small class sizes, an exciting curriculum, excellent care and support and good links with the local community



Ofsted 2011
"Pupils are confident,
very happy at school
and curious to learn."



Tel: 01442 842473



www.dagnall.bucks.sch.uk

E-mail: office@dagnall.bucks.sch.uk

G.N.C Wall & Floor Tiling

Covering all aspects of tiling from
Natural Stone & Porcelain to ceramics



gnctiling@hotmail.com

Providing assurance & attendance through to
completion of works

For a free full & comprehensive quotation
please call Colin Bell

07725 033017

01525 222094

D.A. Windows Doors & Conservatories

23 Church Lane, Eaton Bray, LU6 2 DJ

Tel: 01525 221051 Mobile: 07801 798387

email: mimcavinder@hotmail.com

AUTHORISED
SWISH INSTALLER
WITH OVER 20
YEARS
EXPERIENCE

Installation of PVCu windows, doors and conservatories
Replacement glass units and window maintenance

QUALITY PRODUCTS - QUALITY WORKMANSHIP -
REASONABLE PRICES



General building
maintenance work
also undertaken
including:
Fascias and Soffits
Gutters
Fencing

Accredited Member of the
Incorporation of Plastic
Window Fabricators and
Installers Limited



PLUMBING AND HEATING

FOR ALL YOUR PLUMBING, HEATING AND GAS
REQUIREMENTS

NOSSITER AND BARNETT LIMITED
PLUMBING AND HEATING

CONTACT MATT OR JAMIE
TEL 01525 229524 MOB 07802 270427





Protecting what's important

MJ Security Systems Ltd

MJ Security Systems

Contact Us For More Information

Unit 4, Arianne Business Centre,
Blackburn Road,
Townsend Industrial Estate,
Houghton Regis,
Bedfordshire,
LU5 5DZ

Please call for a free quotation

T: 0800 0856126

E: info@mjsecurity.co.uk

W: www.mjsecurity.co.uk



We also specialise in:

- IP Cameras
- Intruder Alarms
- Access Control
- CCTV & Monitoring
- Door Entry
- Covert Cameras
- Security Lighting



FROM ONLY
£439.95+VAT
Products and
Installation



Kit includes:

1 x Wireless Door Contact, 2 x Wireless
P.I.R., 1 x Wireless Sounder, 2 x Remote Set
and Unset Fobs.

Stylish • Wireless • Secure

M . P . S

Maintenance & Property Services

- KITCHENS AND BATHROOMS
- PAINTING AND DECORATING
- PROPERTY RENOVATIONS
- PLASTERBOARDING
- FENCING

FREE ESTIMATES
NO CALL OUT CHARGE
NO JOB TO SMALL
LOCAL

Contact:- Julian

07958 306301

E-mail – mps@mustoe.co.uk
www.mustoe.co.uk

Leighton Aerials

Established 1970

**For all your aerial and
satellite needs call Colin
on 01525 374742**



Edlesborough School & Pre-School



Pupils' behaviour is outstanding...

The environment for learning is exciting and stimulating...

A real strength of the school is pupils' attitude to their learning .

Ofsted 2013

For more information about our School, Pre-School and Before and After School facilities, visit our website at www.edlesborough.bucks.sch.uk

Please contact the school on 01525 220431 to arrange a visit.

CHIMNEY SWEEP

Local & Est. Brush n Vac
Friendly, Clean and Efficient

Call **KEVIN HING** on

Tel: 01525 371592

Mob: 07940 528897

www.khing.co.uk

Member of NACS



E W Wallace & Co
Chartered Accountants
Tax Consultants
Business Advisors

Small business specialists serving
Beds, Bucks & Herts

- Annual accounts
- Tax returns
- Self-employed
- Limited companies
- Small business specialist
- Sage Accounts expertise
- Prompt, personal service
- Value-for-money fees
- Free initial consultation

01525 220826

www.ewwallace.co.uk



JAMES FALCON-CROSS

LANDSCAPING AND OUTDOOR LIVING DESIGN

ALL ASPECTS OF LANDSCAPING
UNDERTAKEN INCLUDING
FENCING, TURFING AND PATIOS
TIMBER STRUCTURES
DESIGNED AND BUILT

VEGETABLE AND HERB GARDENS

01442 843258 / 07769 901325

ONECROSSFALCON@GMAIL.COM



Beau

HAIR AND BEAUTY SALON

- Unisex hair salon
- Hair Extensions
- Nail Bar
- Wedding, Prom Hair Styling
- Express Eyelash
- Girls Glamour Parties
- Accessories
- Loyalty Cards

01525 220926

3 Summerleys, Edlesborough LU6 2HR

For lots more offers and news about what is happening follow
and like us on Beau Hair & Beauty @beausalon

CND Shellac™

KOLESTON PERFECT

O.P.I



ghd

Home or Business
IT Support



Visit Our Website at www.hobit.co.uk

Laptop Repair • Virus Removal • Data Recovery
Laptop Screen Replacement • Data Transfer
Wired & Wireless Networks • Broadband Setup
Backup Solutions • Printing Problems
Tune Ups • 1:1 Training • Email Problems
Ipad & Iphone Connectivity Issues
Computer Upgrades • Free advice

Call now 01525 378127 or 07702 80 70 90

RELIABLE - PROFESSIONAL - LOCAL

James B Chadburn FBHI Fine Antique clocks & Barometers

Specialist in repairs & restorations.

Valuations & clock finding service.

Advice & assistance on formation & disposal of private clock collections.

Quality clocks/barometers Bought & sold.



Telephone 01525 221165

Mobile 07790 000629

E-mail: info@jameschadburn.com

Reiki Therapy

Reiki means universal energy. It is a relaxing, calming therapy that calls on your own bodies natural healing properties. It is possible for Reiki to help with physical symptoms, emotional issues and spiritual growth.



Session is £30 per hour

Contact Nicola (Reiki level 2)

Mob 07941799772

01525837018

Bower Lane Eaton Bray

T. COBB

PLASTERING
FLOOR SCREEDING
PLASTER MOULDINGS
CEMENT CORNICES
RENDERING

GENERAL BUILDING & ALTERATIONS

TEL: 01525 792698 MOB: 07772 231348

Wagging Wonderful
Dog Grooming
Here to take care of your mucky pup!

- Your local grooming service in Eaton Bray!
- 1-2-1 care for your dog
- NO cages!

Telephone: 07580 343 396

Website: waggingwonderful.weebly.com

Email: waggingwonderful@yahoo.co.uk



Harmony Plus Hair & Beauty Clinic

Bridal Packages Available

We offer a range of treatments:

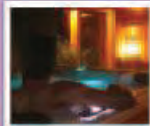
- 3D Lipo Fat Reduction
- Teeth Whitening
- Caci Non-Surgical Face Lift
- Crystal Clear Microdermabrasion
- Extreme Lashes and LVL's Lashes
- HD Eyebrows
- Fake Bake Tanning
- Young Blood Make-up
- Manic Nails
- Bio Sculpture Gels
- Shellac Nails
- Hot Stone Massage
- Reiki

Call us today

Harmony Retreat

FREE SPA PLACE
in our cosy log cabin
FOR THE BRIDE ONLY

if the Bride books her Spa Hen Party
for 5 people or more at
Harmony Retreat's Log Cabin
when Hair & Makeup is booked
with Harmony Plus Hair & Beauty Clinic



Harmony Plus Hair & Beauty Clinic
6A Wallace Drive • LY6 2DS • Dunstable/Leighton Buzzard
07852 145053 • www.harmonybeautysanctuary.net



C H BUILDERS

1 Richmond Court
Eaton Bray
Dunstable
LU6 2DY

cwhawkes@tiscali.co.uk
Tel: 01525 229558
Mob: 07989 357231

Local builder with over 35
years experience in the trade,
specialising in:

- Kitchen fitting and alterations
- Extensions
- Loft conversions
- Renovations

Recommendations available

Please contact Chris to discuss
any requirements for a free
quotation

LINSLADE PHYSIOTHERAPY & SPORTS INJURY CLINIC

47a Coniston Road Linslade
Leighton Buzzard Beds LU7 2PJ



Affordable effective treatment to ..

- Relieve your neck & back pain
- Loosen your stiff joints
- Ease your arthritis
- Get you back in the game after a sports injury
- Help you recover from surgery

Why Wait To Feel Better?
Ring for an appointment now
01525 853462

E-mail: pt4u@linsladephysiotherapy.co.uk

(Ample free parking available)

Stay Healthy & Happy at Work

Nowadays, many of us spend a great deal of time driving. A study found that people driving over 25,000 miles a year averaged just over 22 days a year off work with a 'bad back'.



Here are few tips to improve your posture and help your back when driving:

1. Ensure the controls are within easy reach.

Bring your seat forward so that you can easily reach the pedals without overstretching, which can cause increased strain.

2. Your backrest should provide adequate support.

The driver's seat should provide good support to the lower back, both lengthways and sideways. Many cars have a lumbar support which you can adjust. If not, consider purchasing a lumbar roll which can be attached to the backrest by a strap.

3. Ensure the headrest is in a comfortable position.

Comfortably rest your head on the headrest with your neck and shoulder muscles relaxed. Avoid sitting with your chin poking forwards.

4. Take care getting in and out the car.

To avoid twisting, slide your seat backwards. To get out of the car, turn your whole body towards the door, lower your feet to the ground and then stand up. To get in the car, sit on the edge of the seat first and then rotate your whole body into position.

5. Be careful loading or unloading items from your vehicle.

Be careful lifting items in and out of the boot. Minimise stretching and lifting by placing loads nearest to the bumper edge.

6. Keep calm and carry on.

Don't grip the wheel too tightly - this can

increase muscular tension. In a traffic jam, take some deep breaths, lift your shoulders to your ears and then relax. Take regular breaks on long journeys. Get out of the car and have a short walk round and do a few gentle stretches.

For further information on posture or back care, contact your local Chartered Physiotherapist:

**St Judes Clinic,
26 Lake Street
Leighton Buzzard
LU7 1RX**

☎ 01525 377751



**🌐 www.stjudesclinic.com
enquiries@stjudesclinic.com**

**The Salvation Army,
Booth Place, Eaton Bray
Weekly Activities**



Sunday

Footprints (Sunday School) 9.45-10.45am
Morning Worship 11am
Messy Church 3-5pm
(Last Sunday of the month)
Songs of Praise 4pm
(3rd Sunday of the month from May to Dec)

Tuesday

Coffee Morning
(Alternate weeks) 10-11.30am
Music practices (all welcome) 7.30-9pm

Wednesday

Home League 2.30-3.30pm
(Ladies Mtg but all welcome)
Champions Challenge Club *(term time)*
(Ages 5-10 years) 5.45-6.45pm

Thursday

Parent and Toddler Group
(Term time) 9.30-11.30am
Sewing & Craft Bees
(2nd Thursday of month) 7.45 pm
Ladies Fellowship
(Last week of month) 7.45pm

*For further details please call Envoy Hilary Chadwick. T:01525 222087 / 07932 057490
E: hilary.chadwick@salvationarmy.org.uk
W: www.salvationarmy.org.uk/eaton-bray*

Eaton Bray Parish Council

Highlights of the Meeting Minutes of the Eaton Bray Parish Council Held on Monday 5th October 2015 from 7:30pm at the Coffee Tavern

Central Beds Council (CBC) – Clerk or visit our website for more details.
Councillor Ken Janes

Website: www.centralbedfordshire.gov.uk -

Customer Services: 0300 300 8302 / Email: customers@centralbedfordshire.gov.uk

- There was no representative from CBC in attendance.

Bedfordshire Police:

REPORTED CRIME – YEAR TO DATE		
RECORDED CRIME		
Crime Type	01/09/14 – 30/09/14	01/09/15 – 30/09/15
Violence against the Person	0	1
Sexual Offences	0	0
Robbery	0	0
Domestic Burglary	2	1
Burglary Other	0	0
Vehicle Crime	0	1
Other Theft	0	1
Criminal Damage	0	1
Drugs	0	0
Other Notifiable Offences	0	0
Total	2	5

ASB INCIDENTS		
Anti-Social Behaviour	01/09/14 – 30/09/14	01/09/15 – 30/09/15
Total	3	10

Eaton Bray has had 10 reports of anti-social behaviour this month.

- (1) 5x youth hanging around Wallace Drive, causing some issues
- (2) 3x noise complaints, Bottom Drive
- (3) 1x off-road motor vehicle going around the area
- (4) 1x street drinker

News from the team: If you wish to contact your Local Policing Team then please call 01582 473411 or email LPT.LeightonBuzzardLinslade&Rural@bedfordshire.pnn.police.uk. **Non-emergency call 101 / All emergencies 999**

Vacancy - Parish Councillor

There is a vacancy for a Parish Councillor on Eaton Bray Parish Council. If you are interested in joining the council please email the Parish

Clerk or visit our website for more details.

Neighbourhood Plan: The first Neighbourhood Plan Steering Group (NPSG) took place on 28th September 2015; those attended were residents who put themselves forward as volunteers [15 attendees]. The PC will be obtaining professional advice in setting up a Neighbourhood Plan and funding for the plan is being looked into. Training is being set up for Steering Group members and the NPSG was on 26th October.

Speedwatch

Speedwatch are to be carrying out more sessions in the near future. However they do have vacancies for volunteers to help with the speed checks. If you would like to get involved, please contact Cllr. Mark Tomkins, email councillormarktomkins@gmail.com expressing your interest.

Christmas In The Parish

The Parish Council would like to thank all the businesses/individuals who sponsored the Christmas Wreaths last year, 2014. Due to the popularity of the Christmas Wreath's the Council are starting to collate requests for this year's Christmas Wreaths. To express your interest in sponsoring a wreath for Christmas 2015, please contact Cllr. Philip Spicer with your details: Email - philip.spicer@gmail.com.

Felling/Trimming Trees On Parish Council Land

The Parish Council wanted to remind residents of their policy with regards to trees on Parish Council land.

In line with procedures set out by Central Bedfordshire Council it is PC policy not to top/lop or fell otherwise healthy trees that would otherwise need no maintenance to alleviate problems such as: *the build of leaves, seeds, berries or other minor debris on a neighbouring property; to allow more light to a property,*

where the trees in question would not otherwise require any surgery; to improve television or satellite reception or to prevent roots entering already broken pipes. That if a tree/hedge does not have birds nesting or if a tree does not have a tree preservation order, the council will only work on it if there is a health and safety risk or the tree is diseased.

Notice Board/Market Square

The PC have considered the proposal to move the notice board on Market Square from its current position, not in the best position and spoiling the ambience of the square itself, to the other side of the road on The Pound (green space next to the bench/bus stop). It was agreed that this would be a more suitable location and are now in the process of organising for the notice board to be relocated to its new position.

Next Eaton Bray Parish Council

Meeting Date

Monday 7th December 2015; from 7:30pm at The Coffee Tavern (1st floor)

Parish Council Website: www.ebpc.co.uk

For full detailed copy of the minutes for Eaton Bray Parish Council please visit the Parish Council website.

A hard copy of minutes can also be viewed on the Parish Council's notice board at The Coffee Tavern.

✉ Heidi Head, Parish Clerk & RFO

Email: clerk@ebpc.co.uk

Telephone/Fax: 01525 221464

Website: www.ebpc.co.uk

Office Hours: Tuesday/Thursday/Friday 09:30-

13:30hrs [messages can be left on answerphone]

Follow Eaton Bray Parish Council on Facebook and Twitter. Keep up to date with what is going on in the parish.

Eaton Bray Parish Council

Your Neighbourhood Development Plan

Since April 2012 communities, such as the villagers of Eaton Bray, have been able to lead future planning of their local area through Neighbourhood Development Plans if they receive a 50% yes vote in a public referendum. Eaton Bray Parish Council set up a Steering Group of Eaton Bray residents to draw up and write a Neighbourhood Plan (NP). The Group has met twice to establish the way forward and as a result chosen three main areas to concentrate effort on with smaller focus groups, and those are as follows:

Community Facilities

Covering a diverse range of subjects from inside and outside recreational spaces to village events, and anything in fact that helps to maintain and grow a community spirit.

Environment

Includes; green spaces, green belt, and diversification of existing and new green space, ecology and sustainability.

Site analysis

Encompassing existing and planned housing

and developments, monuments, businesses, shops, etc. Design and development of spaces will include the relationship of space and properties occupying it.

The NP is not going to be just a building and planning guideline strategy document, but will also encompass many other criteria that will serve to help to put some heart back into the community. It is not yet clear exactly how long this project will take but is likely to be around 12 months before the NP is put forward for approval by Central Bedfordshire Council and followed by a referendum so that all the residents of Eaton Bray can approve the Plan.

The Steering Group will be reporting progress through the Focus Magazine so that residents can keep up to date. If you would like your voice to be heard, please feel free to attend the next Steering Group meeting. Meetings are planned for the last Monday of the month (excluding Bank Holidays) at 19:30hrs at the Coffee Tavern, Eaton Bray.

Edlesborough Parish Council News

Including Edlesborough, Dagnall and Northall

Edlesborough Parish Council wishes all its parishioners a Merry Christmas and a Happy New Year.

Edlesborough Parish Council are pleased to announce the co-option of two new Councillors.

Cllr Scott Mineikis will join Cllr Mrs Trish Owen in representing the Ward of Dagnall.

Cllr Mrs Christine Thomas will join Cllrs Alan Williams, John Wilkinson, Chris Nevard and Mrs Finola Woodhouse in representing the Ward of Edlesborough.

The Ward of Northall is represented by Cllrs Kevin Cabbage and Robert Pratt.

New Trees on Edlesborough Green



The Council have agreed to the EDaN Beautification team planting three Oak trees, a Service tree and a Christmas tree on Edlesborough Green.

Permission is currently being sought from Bucks CC for the planting of trees and a bench on the grass area at the top of Cow Lane adjacent to the Chapel.

Any parishioner wishing to sponsor a tree should contact the Parish Clerk.

Thames Valley Police

PCSO Tina Hobson attended the October EPC meeting on behalf of Thames Valley Police and reported the following incidents/reports:

- One fallen tree.
- One theft of cooking oil.
- Six reports of anti-social behaviour including:
 - One party.
 - Two barking dogs
 - Three incidents at the same property.

Parking issues in the villages were also discussed. TVP can take action against illegal parking or parking causing an obstruction.

Changes to bin collection days at Christmas

Normal Collection Day	Revised Collection Day
Friday 25th Dec	Tuesday 29th Dec
Friday 1st Jan	Mon 4th Jan

Allotments

Following this year's collection of rents and renewal of allotment agreements EPC currently has vacant allotments. Anyone wishing to take on an allotment should contact the Parish Clerk.



Your chance to shape the future of Aylesbury Vale

Aylesbury Vale District Council is asking local residents, businesses and community groups to have a voice in the future of housing, jobs and key policies, as consultation on the next stage of the Vale of Aylesbury Local Plan (VALP) gets underway.

Following approval by AVDC councillors, a document setting out the issues and options for the VALP has been produced and is available to view at www.aylesburyvaledc.gov.uk/valp Residents now have until 4 December to view this document and give their views and ideas on what the plan should achieve, how new homes and jobs should be distributed, and what new policies could be introduced to manage development between now and 2033.

Councillor Carole Paternoster, Cabinet Member for Growth Strategy, said: "We need to build another 31,000 new homes in Aylesbury Vale by 2033 and the new Local Plan will provide the framework for how the Vale will grow and develop to accommodate this. It is really important that people take this opportunity to get involved by letting us know what they think about the different options we have identified and by raising

any issues they feel need addressing.”
 The Local Plan, which is still in its early stages will, once finalised, provide firm guidance on how planning applications should be considered and say where new development should or should not take place. This is the second public consultation stage in the new Local Plan’s preparation and it includes nine potential options for distributing new development.

The options include developing urban extensions at Milton Keynes/Bletchley; using land more efficiently by raising the average density of new development; creating a whole new settlement somewhere in the Vale; and a combination of these.

People can view the consultation and give feedback via the website www.aylesburyvaledc.gov.uk/valp The responses received will inform the development of a draft local plan. There will be two further consultation periods prior to the Local Plan being considered at a public examination in 2017.



Speedwatch

The EDaN Traffic Management team are looking for volunteers to help man their Sentinel device. If you have an interest in slowing down traffic in the villages or are concerned about Road Safety please contact Louise Turner on 01442 834123 or by email at louisefanthorpe@yahoo.co.uk

Edlesborough Parish Council Meetings

The next Edlesborough Parish Council Meetings will take place in Edlesborough Memorial Hall on:

- Thursday 17th December 2015.
- Thursday 21st January 2015.

The meetings will commence at 7:30pm. All Parishioners are welcome to attend and may ask questions, raise issues and give suggestions during the Open Forum before the formal start of the meeting.

The full minutes of the Parish Council meetings are normally available to view on the website or from the Parish Clerk.

Contact Information

Clerk to Edlesborough Parish Council:

Clerk: Penny Pataky 01525 229358

Email: clerk@edlesborough-pc.gov.uk

Website: www.edlesborough-pc.gov.uk

Facebook:

www.facebook.com/EDANParishCouncil

Please note office hours are Monday – Friday 10.30am – 2.30pm. Messages may be left on an answer phone outside of these hours.



**ALLOTMENTS AVAILABLE
TO RENT**



Edlesborough Parish Council currently have allotments available to rent.


We have four sites to choose from located in:

- Dagnall
- Northall
- Cow Lane, Edlesborough
- The Green, Edlesborough

Plots range in size from 5-10 poles.

Rent per year: 5 pole plot £9:00, 10 pole plot £18:00

If you are interested in renting a plot please contact the Parish Clerk on 01525 229358 or clerk@edlesborough-pc.gov.uk for more information.



**Dunstable & District
Local History Society**

Tuesday 12 January, 7.45pm

The Secrets of IQ Central

The underground communications centre at RAF Stanbridge was a crucial factor in establishing the code-breaking station at Bletchley Park and the Met Office at Dunstable. Paul Brown of Leighton Buzzard History Society, tells the story.

Methodist Church Hall, Dunstable

Visitors always welcome £2

Neighbourhood Planning for Edlesborough Parish

At the parish council meeting in July your council agreed to make an application for the parish to be designated as a Neighbourhood Area. An application was made to Aylesbury Vale District Council (AVDC) for a Neighbourhood Area Designation and following a six-week publication period it has been confirmed that we are able to take this forward to you, our parishioners.

Meetings are planned for the parish with two meetings in each village but parishioners are free to attend any of the meetings. The purpose of the meetings is to explain the requirements of a Neighbourhood Plan and to seek your help to develop it.

Neighbourhood planning is a right for communities introduced through the Localism Act 2011. Communities can shape development in their areas through the production of Neighbourhood Development Plans, Neighbourhood Development Orders and Community Right to Build Orders.

Neighbourhood Development Plans become part of the Local Plan and the policies contained within them are then used in the determination of planning applications. Neighbourhood Development Orders and Community Right to Build Orders allow communities to grant planning permission either in full or in outline for the types of development they want to see in their areas.

It must be stressed that the policies produced cannot block development that is already part of the Local Plan, what they can do is shape where that development will go and what it will look like.

The new Vale of Aylesbury Local

Plan (VALP) by AVDC is under development so we will have an idea of what is required of us. Our plan can be about more than housing development and could be seen as a strategic plan for the parish to cover the next 15 to 20 years. It can include such issues as commercial development, facilities in general, protection of the environment and so on. There is a wealth of information online under Neighbourhood Planning. Many parishes all over England are in the process of developing their plan or have developed their plan.

In 2008 we helped to bring the Parish Plan into being. In the plan there was mention of the type of housing you would like to see in the parish. The Neighbourhood Plan is different in three respects. Firstly, once created it has to be voted on in a local referendum. Secondly, it has to pass an independent test by a government inspector and thirdly, once passed it has support in law.

Without your involvement in the development and ultimately your vote we cannot do any of the above nor enjoy any of the development protections it brings. Please come along to a meeting to find out more about how it can apply in Edlesborough Parish. The dates and venues follow.

Thursday 14th January
Edlesborough Memorial Hall 8pm

Saturday 16th January
Northall Village Hall 3pm

Tuesday 19th January
Dagnall Village Hall 8pm

Saturday 23rd January
Edlesborough Memorial Hall 2pm

Monday 25th January

Northall Village Hall 8pm

Saturday 30th January

Dagnall Village Hall 2pm

We look forward to seeing you at one of the meetings and engaging with you to

produce a plan for our future in our parish.

Best regards

✍️ Alan Williams

Chairman

Edlesborough Parish Council

Edlesborough Book Group

The Colour of Magic by Terry Pratchett / Skios by Michael Frayn

This month, we were given a choice of two books to read, humorous books that were completely different both in their writing style and the humour contained within. As humour is such a personal thing, the idea was to give us all a chance to read something that was in accord with our own taste. Unfortunately due to various difficulties the meeting did not take place, so the opinions of the group cannot be documented this month. However, here are brief summaries of the two books, so that perhaps someone will be tempted to start reading one or both of these two very popular authors.

The Colour of Magic is the first of the Discworld series and is the introduction to that very individual world. Somewhere on the frontier between thought and reality exists the Discworld, a parallel time and place much like our own, but looking very different. It is a place carried through space on the back of a giant turtle. But Discworld's serenity is being threatened by the imminent arrival of its first ever tourist, upon whose survival rests the peace and prosperity of the land. Unfortunately, the hapless tourist's guide is a very inefficient wizard and the story proceeds from there.

Skios by Michael Frayn is set on a Greek island where the Fred Toppler Foundation is preparing for its annual convention. Dr Norman Wilfred, an eminent academic, is flying in to give the main speech of the occasion. By chance, Oliver Fox a charming young ne'er do well, who lives by his wits is on the same flight. Due to a mistake made by the events secretary who has been sent to meet

Dr Wilfred, Oliver Fox assumes the identity of the professor and Dr Wilfred, minus his luggage is sent to another part of the island. The plot then relies on mistaken identity and misunderstandings for its comedy effect, which becomes more theatrical farce than comic novel. In fact it is easy to visualise this as a film, the twists and crises of plot seeming easier to assimilate that way rather than on the page.

However, Michael Frayn writes beautifully and his wit, directed at the idle rich, is made with humour and observation. This an easy read but the pace is rather frenetic and so it is recommended if possible to read it in large chunks in order to keep up with the many disasters and twists of plot.

London Luton Airport

With an increase in aircraft in the area and in particular when the wind is from the East, we are getting some aircraft flying directly over the village to join the flight path into the airport. If you are disturbed by the traffic flying over the village, there is a complaints hotline number: 01582395382. This is an airport number where you can register your concerns. It is important to do this if we are to reduce these disturbances over our village.

If you need to complain about Heathrow flight noise the number is 0800 344 844. Email: noise_complaints@heathrow.com



Deirdrea welcomed everyone to the meeting and wished Susan, Jill, Judy and Brenda a very happy birthday. Members were reminded of the Christmas evening on the 7th December. Toys and gifts for the Salvation Army collection for under privileged children at Christmas will be gratefully accepted at the December meeting. The group W.I. Christmas evening will be on 11th December at Caddington.

The speaker for the evening was Simon Gregor on Art and Remembrance. Simon is a professional photographer who, after many years working for the government, decided to leave the civil service and pursue his passion trying to create striking and memorable images. His speciality is architectural, historic/archival and event photography.

Simon gave a most interesting talk using images from the WW1 Battlefields of both France and Germany. He created his project to understand the conflict and the role of Remembrance, and to encourage others to share their photographs. Simon showed images from the book, 'Still Quiet on the Western Front' by Gene Smith 1964 which goes back to battle fields 50 years on. Simon had made many trips to the Battlefields and always with a photographer. He tried not to focus entirely on the cemeteries and some of his slides included The Angels of Mons, The Bowman, Arthur Makim, Ypres and One very sad headstone which read "Day by day how I miss you. Mum"

*In Flanders fields the poppies blow
Between the crosses, row on row,
That mark our place; and in the sky
The larks, still bravely singing, fly
Scarce heard amid the guns below.*

The sight of these delicate, vibrant red flowers growing on the shattered ground caught the attention of a Canadian soldier by the name of John McCrae. He noticed

how they had sprung up in the disturbed ground of the burials around the artillery position he was in. It was during the warm days of early May 1915 when he found himself with his artillery brigade near to the Ypres-Yser canal. He is believed to have composed a poem following the death of a friend at that time. The first lines of the poem have become some of the most famous lines written in relation to the First World War.

The origin of the red Flanders poppy as a modern-day symbol of Remembrance was the inspiration of an American woman, Miss Moina Michael after reading the poem by John McCrae. After reading the poem she campaigned for several years to get the poppy recognised as we know it today.

By 1920 Moina Michael was beginning to lose hope that the Memorial Poppy idea would ever come to fruition. She was in a dilemma about whether to pursue her own academic career or abandon it in order to devote herself entirely to the Memorial Poppy campaign. However, in the early 1920s a number of organizations did adopt the red poppy as a result of Moina's dedicated campaign.

Margaret thanked Simon for his talk and the meeting continued with social time and a raffle.

Eaton Bray Cricket Club

100 Club Winners

December 2015

£25 Mr R Roberts No.54

£10 Russ Bennett No.126

Eaton Bray Cricket Club is kindly sponsored by Meadow Marquees, Houghton Insurance & Gastex Services

BRAYSCOPE

Experts in commercial & domestic horticulture

For all your **Commercial**
and **Domestic** landscape
requirements
Professional and **Qualified**
landscape maintenance and
Construction company



Contact Kevin on

01525 220948 07949 601630

brayscape@aol.com

14 SCHOOL LANE, EATON BRAY BEDFORDSHIRE, LU6 2DT

Come for Coffee at St Mary's

For a warm
welcome and a
cheering cuppa
on the first
Saturday each
month in
St Mary's Church
Eaton Bray
10.00am - midday



Are you an elderly or
housebound resident ?

Would you enjoy a
monthly (free delivery) fish
and chip supper ?



If your answer is 'yes' to either of the above questions then please do get in touch.

We run this scheme on the last Friday of every month but need your orders no less than 48 hours prior to this. We have a voicemail facility on our phone if we are not there to speak to you directly. All messages will be confirmed back to you so you know your order has been received.

Please call on **01525 229 656** to place your order

Ordinary people doing amazing things





EDESBOURGH TENNIS CLUB

Website by Jupiterwill

www.etctennis.org

Play tennis Have fun Socialise Feel good Join our club

Join via the website, or call Iona McLean-Hall on 01525 220562 for details

Monthly
draws

New 100 Club

Spend £2 to
spend a penny

In aid of toilets and other improvements
at St Mary's Church, Eaton Bray



Contact: eatonbraychurch@aol.com or telephone: 222691

Eaton Bray Academy

The staff work exceptionally well as a team to promote children's welfare, learning and development and to make sure everyone enjoys their time at the pre-school. Ofsted 2012



Children benefit from the abundant shared resources, access to school assemblies, the information technology suite and the extensive outdoor facilities. Ofsted 2012

Pre School



How many Pre Schools do you know that are part of the Main School? Well, EBA is *one* School!

All the children wear School uniform, have their own book bag, can attend clubs and even eat our delicious School dinners, cooked on the premises by our own School cooks.

.We believe that quality Early Years education is essential; it is on this that everything is built.

We offer a caring, happy, secure and stimulating learning environment in which the children thrive.

Come and have a look!

Tel. 01525 220468 or email admin@eba.ec

Children clearly benefit and thrive as the accommodation, equipment and resources are well suited for their purpose and conducive to learning. Improvements to the premises and the outdoor area give children the confidence to explore and help all aspects of their development. Ofsted 2012

ravencounselling

Teresa Raven, accredited and registered member of the British Association for Counsellors and Psychotherapists (BACP).

Counselling offers you a safe, confidential place to work through difficulties, issues or problems you may be experiencing.

My pricing starts at £15 for an initial consultation, with further sessions priced from £40. Please contact me for more information, or visit my website.



www.ravencounselling.co.uk



ravencounselling@aol.com



07960 090113



facebook.com/ravencounselling

Make your next holiday a *Disney* one!
with one of our luxurious villas right on the doorstep



MINUTES FROM DISNEY



CHEAPER THAN A HOTEL



PROFESSIONAL FRIENDLY SERVICE

PersonalTouch
VACATION VILLAS

☎ 0845 5280 162

🌐 personaltouchvacationvillas.com

As former Edlesborough residents; we now own and run a family business in Florida, USA. Let us help make your Disney holiday as **PERFECT** as it can be. Our **private pool villas** (AKA 'home from home'), cater for all your needs and are **within 5 miles of the parks** - the perfect base for your trip.

Leighton Plumbing & Heating

Oil fired boilers
service, repairs
& installations



All other aspects of plumbing
& heating undertaken

Oftec registered & insured

01525 385250
07774 567472

11 Woodman Close
Leighton Buzzard
Beds
LU7 3NU

leighton-plumbing@ntlworld.com



Helping Hands
The Home Care Specialists

Est. 1989

Do you need a Helping Hand?

Our **local** care team has been providing award winning quality homecare since 1989.

We offer a homecare service **from 30 minutes per week to full-time Live-in Care**, which enables you or your loved one to remain at home with compassion and dignity.

To find out how we can help,
call: 01296 752 632 or
visit: www.helpinghands.co.uk

 **Stoten Gillam**
chartered accountants
chartered tax advisers

99 High Street South
Dunstable
LU6 3SF
Tel: (01582) 608601
www.stotengillam.co.uk


ICAEW CHARTERED ACCOUNTANTS   "Practical Solutions for Growing Businesses" 


W Roff Agricultural Services

- Hay & straw for sale
- Paddock maintenance
- Fencing

 07909 680807
ELSA GE FARM, CHEDDINGTON

Wednesdays
1pm to 2:30pm
(During term time)
Eaton Bray Village Hall
(Church Lane LU6 2BJ)

cheeky monkeys 

under fives play time

£1 per adult/child - Under 1 yr free

creative play 🍌 singing
stories 🍌 baby corner
craft 🍌 healthy snack

01582 699092 🍌
(Beehive Children's Centre)

 Come along,
make new friends
and join in
the Fun!

Coffee Tavern

Large Hall

£6.00 per hour

Commitee Room

£3.50 per hour

Large Hall &
Commitee Room

£8.00 per hour



Bookings 01525 220891

Stairlift and access ramp available

We are a nurse-led home care provider committed to delivering the very highest standards of care.

Support from our dedicated team gives you or your loved one the peace of mind and confidence to be able to continue living at home.

Family-owned and managed, we are independent and do not belong to a national chain or franchise. We are registered with the CQC, number 1-1499072841.



**your own
home care**
putting the nursing back into care

To talk to us about your requirements please call Helen Yates RGN on 07920887414 or 01442 843064 or email helen.yates@yourownhomecare.co.uk



www.yourownhomecare.co.uk



Some comments from our recent Ofsted report:

Children are consistently offered a stimulating range of activities and opportunities which enable them to make good progress towards the Early Learning Goals.

Staff have a good understanding of creating a safe and welcoming environment . . .

Staff support children well and encourage them to be active in their learning and to think critically.

We are a committee run playgroup operating five mornings a week 9:15 – 12:15 for children aged 2 to school age.

If you would like to find out if your child would be happy here, please phone our Playgroup Leader, Ann Tobin on 07816 358 342.

www.dagnallunderfives.co.uk

janes

Electrical Appliances, Bikes & Flooring Store

The Family Business with 130 years of recommendation



Free Delivery & Installation

On Kitchen Appliances & TV's

within a 15 mile radius (excluding installation on Gas & Built-in Appliances)

Sound Advice & Peace of Mind

4-8 High Street, Edlesborough, Dunstable, Beds LU6 2HS

Tel: 01525 220208 Fax: 01525 222802

www.janesltd.co.uk

GALRAL SERVICES

AUTOMOTIVE, AGRICULTURAL & PLANT MAINTENANCE

Modern, classic and vintage vehicles; servicing & restoration

Over 40 year's local experience in automotive industry

Agent for BEPCO tractor parts.

Agent for TRS restraint systems (ratchet straps)

Welding & fabrication services (sheet steel & aluminium)

Auto electrical and engineering works

Contact Simon

07785 278188

Fax/answer machine

01525 210597

GATES

Plumbing & Heating Limited

We'll help meet your heating needs

- Biomass boilers
- Air source heat pumps
- LPG central heating
- Oil and Gas central heating

Please contact us on:

01296 670445

info@gatesheating.co.uk

www.gatesheating.co.uk



We are Gas Safe, OFTEC, NAPIT
and MCS registered

Government funding for renewables

Simples Fitness

Fitness classes & individual fitness training

- * Circuit Training
- * Cardio Blast
- * Crazy Abs
- * Buggy Push
- * Box-Fit
- * Ski-Fit

Membership £35 per month or Pay as you go

Forget the gym...make fitness simples!

www.simplesfitness.com

MINI DIGGER WITH DRIVER FOR HIRE

Fully insured ↔ Competitive rates ↔ Based locally
Aggregates Supplied ↔ ↔ ↔ Tree Stump Removal

Contact Simon

07785 278188

Fax/answer machine 01525 210597



Electrical Services

www.rselectricalservices.com



FULLY QUALIFIED ELECTRICAL ENGINEER

CPS Registered through NICEIC Scheme

Competitive prices and quality service

Available for all your domestic and
commercial electrical requirements

No job too small

Call Russell Sears:

07578 008567

01525 220008

17 Good Intent, Edlesborough

Police Thank Residents for Petition Support

'Thanks for your support!'

That's the message from Police and Crime Commissioner Olly Martins and Chief Constable Jon Boutcher after a huge show of public support for a petition calling for more Government funding.

The electronic petition, launched just a few days ago, has already attracted more than 4,300 signatures – meaning it's well on its way to achieving its 10,000 target to ensure the Government responds to the petition. At 100,000 signatures, the petition will be considered for debate in Parliament.

Mr Martins has urged the public to spread news of the petition among family and friends, via word of mouth, telephone and social media, so as many people as possible get the opportunity to sign.

He emphasised that Bedfordshire Police has just 169 police officers per 100,000 population against the England and Wales average of 232 and 388 in the Metropolitan Police.

He added: "We have to make it completely plain to the Government that we as a county really value our police force and are not prepared to sit back and see it jeopardised by an unrealistic level of funding.

"The force has bent over backwards to make efficiencies, best use of technology and collaborations with neighbouring forces and partners, but there is a limit as to how much further we can go. We have been cut to the bone."

Mr Boutcher added he was 'overwhelmed' by the initial support shown by the public, saying it highlights an increasing public understanding of the position the force finds itself in.

He warned that with more cuts looming, he fears the force will become unsustainable and be unable able to deliver some services or respond to incidents in the way it currently does.

He said: "Bedfordshire Police has a proud tradition of protecting the public and fighting

crime, together. It means a lot to me, my officers, staff and volunteers to see the public rallying around to fight our corner.

"Bedfordshire may be a small county, but it is incredibly complex to police. We have an international airport, busy road network and some of the highest levels of gun crime, knife crime and serious acquisitive crime in the country and a level of terrorism that is only matched by Metropolitan forces, yet have one of the lowest rates of officers per head of population."

The PCC launched the petition after a letter from Policing Minister Mike Penning which outlined proposed "refinements" to the way in which central Government policing budgets will be allocated to forces.

Under the proposal Bedfordshire, which has long argued it has been unfairly treated by the funding formula, is set to receive no additional funds. By contrast many larger forces, with far more reserves, will.

Sign the petition here: <https://petition.parliament.uk/petitions/110333>

fitness
4 fun



Get those muscles working! Tone and strengthen arms, legs, bums and tums – you'll look and feel great.

Why not give it a go? Only £5 per week for one hour of fun fitness. Pay-as-you-go, come when you can.

Come along and join our friendly group.

Everyone welcome.

No need to book – just show up.

What: Fitness4Fun with Kay

Where: Edlesborough Memorial Hall

When: Every Friday, 10:00-11:00 am

Our October meeting was held in the Memorial Hall on 13th October, when we had the double pleasure of celebrating our birthday dinner and being entertained by our excellent speaker, Gail Stuart, daughter of Eric Morecambe, who spoke on the subject 'Morecambe Moments. Life With My Family'.

The interior of the Memorial Hall was a sight for sore eyes. The WI ladies excelled themselves at decorating the tables. However, particular mention must be paid to 'Pauline's Pots'. You did a marvellous job Pauline, thank you. Having enjoyed the delicious meal the ladies sat back and enjoyed a very amusing talk.

Gail started her affectionate talk by reminding the audience that it was thirty one years since her father died. We found it hard to believe. Gail spoke fondly of her grandmother, Sadie, who at 4 feet 10 inches was the tallest of her nine sisters and one brother and was the mother of Eric. Apparently she was the guiding light in helping Eric achieve his show business career. Gail made clear that her grandmother was not the 'pushy' character that some people had made out she was. Sadie and her husband George had been married eight years before Eric was born. George, at six feet two inches, was the polar opposite of his wife. He was a dapper dresser and resembled Clark Gable. George was a keen ballroom dancer who worked for the council digging roads. Later on he became the manager of the indoor market. George was always happy and contented. He was one of thirteen and had a brother who played rugby for England.

Gail firmly believed that her father would have been diagnosed as having ADD if the diagnosis had been available when he was a child. She also wondered if there was an

element of Aspergers and being dyslexic. Her father had always been known for being a mischievous child. When he was three years old Eric was found in the middle of the road, directing the traffic. From the age of seven years he played truant from school and was often found entertaining the workmen on building sites. Throughout his childhood Eric was the best of friends with his cousin. The friendship remained even when his cousin was found blue and hanging from a tree; the result of the game they had been playing.

Sadie realized Eric was a live wire and that he would not be able to conform to an ordinary, everyday routine. A cousin of Eric's attended a dance class. Sadie took the opportunity and enrolled Eric. That was the beginning of his future. Eric was told he had talent with his dancing. Sadie took numerous jobs in order to support her son. He was nine years old when he started in show business. Eric kept winning competitions and so came to the attention of Jack Hilton when, aged thirteen, Eric auditioned for a show at the London Palladium. At the same time, a young lad was living in Jack Hilton's house. That lad was Ernie. A very successful song and dance performer. Sadie was besotted with Ernie because he was everything that Eric was not. Gail informed her audience that next year will mark the 75th anniversary of Eric and Ernie performing together. When Eric was 21 years old, Sadie wrote a letter to Ernie, asking him to look after Eric; which he did. However, the war occurred and separated the boys. Ernie went into the navy and became a cook. Whereas, Eric became a Bevan Boy and went down the coal mines. After the war the boys found themselves working for ESNA in the same circus. From then on they worked as the straight man / funny man team. They had mutual respect for each other and

never produced sub - standard work. Those were the reasons why their partnership lasted 45 years.

Eric was five feet ten inches and weighed only nine stones when he married in 1952. Gail's mother was a beauty and tall at five feet ten inches. She was starring in Gypsy Rose Lee, having taught herself to play the piano, sing and dance.

Gail was brought up in a loving and close knit family, where her paternal grandparents played a significant part. She told us the tale of the day she started school at the age of five years. Her grandfather George took her on the bus, a very busy bus during the rush hour, packed with men going to work. Her grandfather informed her he wasn't sure whether or not he would be able to take her all the way to school or meet her at home time. In fact he had to get off the bus before they reached the school. Before leaving her, George told her to, "follow the kiddies." She did and managed to arrive at school. Gail also managed to get herself home as well.

Gail described her childhood in one word, 'embarrassing', particularly during her adolescence. She described at length her father's antics and humorous remarks, which

had the WI ladies in tears. These included the time when a prospective boyfriend phoned up to speak to Gail. Eric said he was very sorry but there was no phone there. On another occasion Gene Pitney, a favourite of Gail's, was appearing on stage and she was in the audience. Eric was on stage with his camera, which did not work. He announced to Gene, in front of everyone, that Gail loved him. Another really embarrassing time was when the family was seated on a plane waiting to fly off on their holiday. On the same flight was Tom Jones. There was a long wait before Gail's family had to gather up their belongings in front of the entire plane and walk off because they were on the wrong plane. Finally, Eric was very fond of appearing unexpectedly in front of his children. Apparently, one of his favourites was to step out of a hedge whenever his son was off to play football with his friends. His son used to ask, "Whose father does that?" Gail told us it was a man whose second nature was to be naturally funny.

Thirty one years after his death, Eric Morecambe is still remembered with great affection by many people.

✍️ Jackie Flint



Dagnall Community Choir

The choir have had a busy time of it in the last few weeks. Towards the end of October we staged our now annual Autumn Concert at Eaton Bray Village Hall. I am pleased to say we received a number of positive comments on our performance, which is encouraging. Then on November the 7th we again took part in the Poppy Prom at St. Mary's Church, Eaton Bray. This was, as always, a wonderful occasion to be part of, I am sure the audience went home with happy hearts. We in the choir certainly did.

Our final appearance for this year will be our Carol Concert at Dagnall Village Hall, commencing at 3 o'clock on Sunday 13th December. We will be serving mulled wine, mince pies and nibbles. Father Christmas is expected to be putting in an appearance. This Carol Concert is free to all, however due to the size of Dagnall Village Hall numbers will be limited, so should you wish to be in the audience for what promises to be a wonderful afternoon, please telephone the box office for tickets on 01525 220189 or speak to any member of the choir.



Eaton Bray Lawn Tennis Club

The brilliant coaching work of Sara Leavy & her trusted band of helpers continues.

That comment was made in the October article in the Focus magazine. Good news within the Tennis community travels fast & in support of our "in house" opinion we recently received an email from the Chair of Awards Panel for the Bedfordshire Lawn Tennis Association advising that Sara Leavy had been selected as the Bedfordshire County Winner of the Aegon British Tennis Coach Award and as such her name will go forward as a County winner to a Regional Award selection process whereupon the Regional winners will progress to be judged for the National Award.

Sara also received an invite to the County's Presentation Evening to be held in mid-November at Venue 360 in Luton as a guest of Bedfordshire Lawn Tennis Association to receive her award.

So where did Sara come from?

She started playing tennis at the age of 4 when her mum took her to short tennis at Tiddenfoot Leisure Centre. She joined Linslade Tennis Club when 10 years old and represented the club for 8 years supporting both the junior & adult teams. Aged 12 Sara started playing for the Bedfordshire senior teams and has continued up to the present time. She is now coach and captain of the U12-18 county girls' team & captain of the county ladies team.

At the age of 18 Sara gained a tennis scholarship to America for 4 years where she attended the University of Tennessee at Martin. Throughout her college career, in a team of 6-10 players, she continuously played at No 1 and / or No 2 position in both singles and doubles & was awarded Freshman of the Year at the start & Athlete of the Year in her senior year recording a

10-0 record within the Conference. Sara is currently the Bedfordshire ladies County singles & doubles champion in addition to holding similar titles in South Bedfordshire. Sara gained her tennis assistant qualification when 16 years old and helped out at Linslade for several years. Whilst in America she attended Malibu Tennis Camp where she worked with John McEnroe's daughter, Arnold Schwarzenegger's son & many more such names. Not surprising then that Sara had said to her U.K. friends *"I'll be back"* and she returned in 2010 and gained her PTR qualification & LTA level 3 qualification & licence two years later. Sara has recently upgraded her qualification to an LTA level 4 Senior Club Coach.

Sara recently became involved in disability tennis & has set up many sessions throughout South Bedfordshire for visually impaired, deaf, learning difficulty as well as wheelchair tennis.

No surprise then that some of the *Sara gold* has rubbed off on to the junior members of Eaton Bray Tennis Club & as recorded in the last article, recent results in the South Bedfordshire junior leagues have been most impressive. Girls U16 & Boys U14 winter league winners 2014/15; Girls U16, Boys U16 & Boys U12 summer league winners this year. More junior trophies to collect at the Presentation Evening than Dunstable, Flitwick or Luton & Vauxhall. Congratulations too to the Mini Green, Mini Orange & Mini Red players who have been a credit both to Sara Leavy & to our Club.

Keep an eye out for Max Freebairn, Philip Clarke, Ben Williams, Laura Williams, Rosie Dickson, Heather Kerr, Cameron Brown, Thomas Noithip, Finlay Tarvit, Theo Delahunty Nicholas Clarke, Jamie Williams, Ben Wagstaff, Lewis Brown, Alex Delahunty, Ethan Brace, Alex Sherwood, Hannah

Johnson, Keir Langford, Sam Johnson, Leon Dixon & Xavier Hendicott as they may feature strongly in future competitions, both in-club & in the South Bedfordshire Leagues. The final placings for the three senior teams are now known.

Men's A Division 3 champions. Men's B Division 4 champions. Mixed team 7th in Division 1 & relegated. No disgrace as the top section was always going to be a difficult place to stay.

Even within our relatively small club we have an age range of players spanning 70 years. Success at junior level courtesy of Sara Leavy & her youngsters and with Debbie Williams continuing to organise the fixtures. Success in the open divisions thanks to players who turn out in summer & winter, in rain or sunshine, Success. Maybe too strong a word – achievement in the senior county teams with Roy Cook travelling the country with

the Over 65ies and Peter Hale representing the Over 70ies. I had the honour, today, November 6th 2015, of being a member of the Bedfordshire Over 70ies Tennis Team which reached the National Final of the Senior Inter-County Championships for the very first time, the event taking place at the David Lloyd Centre in Dudley.

A mention here of Stuart Adolph, our outgoing chairman who has helped to keep the club running smoothly over recent years, also of Marion Wright who, like Debbie, goes quietly about her tasks without complaint. Thank you.

To conclude, Eaton Bray Tennis Club continues to prosper at all levels & to provide coaching, social & competitive tennis to the local community. New members are always welcome. Information is available on our website ebltc.org.uk

✍Peter Hale

EDaN Community Transport



Everyone involved in EDaN Community Transport would like to wish all our passengers a very Happy Christmas and a prosperous New Year.

Thank you also to all our drivers and all the people involved in the running of our scheme. If it wasn't for the wonderful people we have in our 3 villages this scheme would not be operating.

Special thanks to Peter Williams for running the scheme on a day to day basis and to Viv Hill for taking care of the money side of things. Let's hope that 2016 is as successful as 2015 has been!!

Please, it really would help us if you would consider becoming a volunteer driver and joining our friendly team. The next couple

of months can be our trickiest with the ice and snow, so please consider helping us out, if only on a temporary basis, in the bad weather, if you have a 4x4 vehicle.

If you would like any further information about the EDaN Community Transport Scheme, whether you are a driver or a passenger, please get in touch with me.

Kathy Bovington on 01442 842796 or 0779 0537032.

If you are a villager in need of transport, please call:

Peter Williams on 01442 842506

remember 48 hours minimum notice required

EDaN Community Transport
volunteering in the local community

Dagnall Poppy Appeal



I would like to thank all those who collected for/donated to the annual Poppy Appeal for the

Royal British Legion in the Dagnall Area. This year we raised £810.05

✍Mrs Pat Bleakley

Dagnall Weather Station (AONB)

Weather Conditions for October 2015

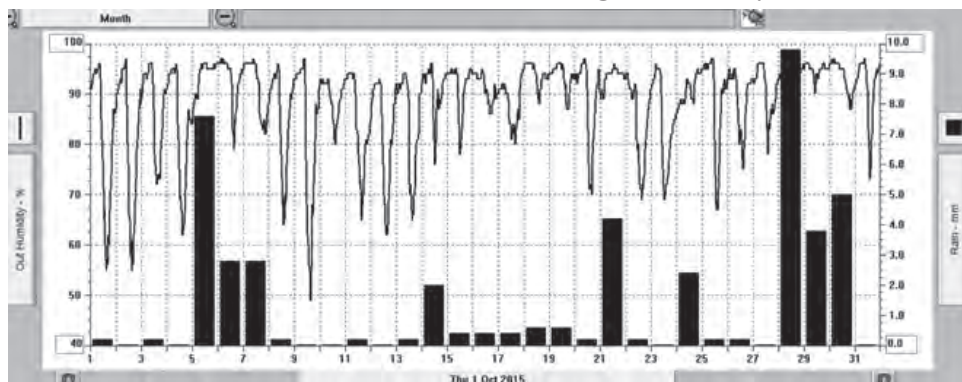


Elevation: 450 ft - Latitude: 51° 50' 13" North - Longitude: 0° 33' 34" West

October was a relatively mild month with temperatures remaining fairly constant. As normal, the highest and lowest temperatures were poles apart high 21.1°C, low 1.4°C. The rainfall was 25% below the 8 year average with only 44.6mm which mainly occurred from the 5th- 7th and again at the end of the month. You will see from the plot below the number rain days but that's not quite right. The rain gauge is so accurate it measures in 0.2mm (1/128 inch) segments. At this time of year when the humidity is high, temperature and dew point lower we have misty, foggy mornings. This moisture commonly known as dew collects in the gauge and is recorded. Although it as recorded 23 days only 14 were actual rain days.

Temperature:	High 21.1°C	Date/Time 2 Oct 15.30	Low 1.4°C	Date/Time 25 Oct 07.30
Mean Temperature	10.9°C			
Dewpoint:	15.5°C	12 Oct 13.30	0.9°C	6 Oct 07.00
Humidity:	97%	On 8 days in Oct	49%	9 Oct 15.30
Barometer:	1032.8 mb	1 Oct 00.00	993.8 mb	6 Oct 16.30
Wind Speed	31 mph SSE	30 Oct 07.30	Months avg.	4.6 mph
Wind Chill:	19.9°C	Oct 15.30	1.5°C	25 Oct 07.30
Dominant Wind:	E			
Rainfall *T= total rain days and moisture. R= Actual rain				
*Rain Days:23(T), 14(R)	Wettest Day 28 Sept		9.8 mm	0.350 ins
Monthly Rain:	Total	Oct2015	44.6 mm	1.756ins
Yearly Rain:	Total	Month	525.3 mm	20.681ins

Plot shows rain / dew & high humidity



For weather data 24 hours a day, updated every 1 mins, visit: http://bit.ly/weather_dagnall this site forecast and much more and the original site www.dagnallweather.co.uk. If anyone has a question, comment or wishes to contact me please email: david@dagnallweather.co.uk or telephone: 01442 843883. Dagnall weather now has an app for your ipad & iphone! Just go to the apple store, search for Wunderstation and follow the instructions to Dagnall Weather Station. Now updated every minute.



How to be a Careful Consumer Online this Christmas

The internet has been with us since the mid 90s. Whilst it has of course brought some fantastic benefits to our lives, it has also created some absolute headaches as well. The fact the entire world is accessible in our homes is a wonderful thing, but it is worth noting that there are lots of internet companies out there, particularly those in other countries that can provide a less than desirable service. So how can you protect yourself against these companies, particularly when making purchases for Christmas?

The most important thing you can do, is to of course avoid buying items from dodgy internet companies in the first place. It sounds simple, but you'd be amazed how many people still find some weird company online that nobody's ever heard of and hand over hundreds of pounds. They are then amazed when they find themselves out of pocket without the goods they've ordered. Therefore, always make sure you research the internet company you are planning to buy from. Find out where they're based, look for a UK telephone number, check reviews and complaints about them so you know exactly who you're dealing with. Ensure that their delivery timeframe will ensure your gifts will arrive in plenty of time for Christmas.

Make sure you're paying a sensible price. If a company is selling an item at a ridiculously low price compared to all other companies, there's usually a reason why. Often the items are fake. Over the years I'd dealt with my fair share of customers who thought they were getting a great deal with 'Ugg boots' or 'GHD hair straighteners', only to find they've bought fakes from a company abroad.

You should always pay for goods by credit card but particularly when buying over the internet. It is worth noting that you are not protected by the consumer credit act unless you're paying over £100, but you're still more likely to get your money back than debit card, cheque or bank transfer. I would go as far as to say you should NEVER buy goods from a company that asks you to transfer money directly into their account. If you decide you're going to buy Christmas presents from an online auction site like ebay, it is worth familiarising yourself with their safety advice. You generally have fewer rights when buying goods in this way, particularly if they are second hand. Paying by paypal and ensuring that you NEVER collect items in person will go some way to protecting yourself. Only buy from highly rated sellers, based in the UK. It is worth remembering that when you buy brand new items over the internet, you are protected by the distance selling regulations. Because you haven't had the chance to see the item in the flesh, you have 7 days from delivery to change your mind and send it back for a full refund. Unless the company specifies their returns postage policy, then they are liable for the postage too. Make sure you order things online in plenty of time to allow for this, after all, you don't want unhappy friends and relatives whose presents are NOT under the tree.

Jonathan Vernon Smith is the Sony Award winning mid-morning show presenter for BBC Three Counties Radio. During his consumer hour he helps listeners with their consumer problems and now shares his advice with you.





Salvation Sound



A Christmas Carol...

Dark was the night, a single lamp shed a ray of light;
Bitterly cold, the wind did blow, harbinger of winter's snow.
A group of children, standing there, heads were bowed in silent prayer.
The only sound, the stamping of feet, as they tried to generate some body heat.
Suddenly they burst forth in song, it sounded like an angel throng -
Their voices raised, in carolling, singing praise about an infant king.

The time of year...

It was the eve of Christmas Day; The night when Santa would ride his sleigh -
Passers by hurried along, called to church, by the bells ding-dong -
Into that holy place they went, some a year of sin to repent!
Because it was the place to be seen - But what to them did Christmas mean?

The story goes on-

The children in their innocence applied no claim to their pretence;
The coppers collected in their ploy, afforded them so little joy.
They went home to a damp, dark, hovel,
Where on bended knees did grovel, to find a sacking bed upon the floor,
Whilst wind whistled strong, through cracks in the door
So dawned the longed for day, I wonder for what did the children pray?
For a fire? a bucket of fuel? or a loaf of bread to supplement their gruel?

Joy to the World...

Oh you, who with annual cheer, wish to each other "Merry Christmas and Happy New Year"
Would you welcome a poor child in, think to yourself "What can I give to him?"
As you partake of your Christmas Fayre,
I want you each one to be aware, of those who are in need this day -
Then some of your blessings you can repay.

Back to Bethlehem...

Long ago, one early morn, Our Lord in Bethlehem was born; he entered our world, this child, a
stranger, and lay sleeping in a manger.
He came to bring us light and love; God's gifted Son, from heaven above;
And still today the prophet's message rings; That He will come again, as King of Kings -

No Vacancies!!

The sign that greeted Mary and Joseph in Bethlehem. That experience was the symbol of things to
come. Jesus found no room in the hearts of many throughout his ministry and continues to find no
room in the hearts of many today. We may imagine that we are different, the truth is most of us only
half-open the door.

How will you respond to God this Christmas?

Remember "He was in the world, and the world came into being through him; yet the world did not
recognise him". John 1.v10.niv. Our prayer should be "Teach us that the glad tidings proclaimed at
Bethlehem all those years ago is 'good news' for us today, here and now" Amen.

Charles Dickens wrote of Scrooge that in the end "He knew how to keep Christmas well" - "May
that be truly said of us, and so, as Tiny Tim observed. God bless us, Everyone".

✍Maureen

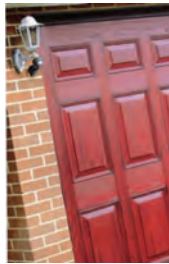


Premier Garage Doors & Gates



Quality Garage Doors

- ✓ Superb choice of designs in metal, wood and fibreglass
- ✓ Any size door made to your requirements
- ✓ Large selection of spares & fast repair service available
- ✓ New or existing doors converted to automatic
- ✓ Professionally fitted by own expert craftsmen
- ✓ Prompt free estimates & advice
- ✓ We cover all areas



(EST 1984)

DIY kits available
Insurance work welcome
Council approved
Remote control gates also available



Unit 7, Sparrow Hall Farm, Leighton Road, Edlesborough LU6 2ES

01525 220212

www.premiergaragedoors.co.uk



janes

electrical & flooring store



*We Wish You a Merry Christmas
& a Happy New Year*



FREE DELIVERY & CONNECTION*
FREE Disposal of Your Old Appliance ON



BOSCH

Invented for life

SIEMENS



MIELE

SAME DAY DELIVERY*

www.janesltd.co.uk Tel: 01525 220208

High Street - Edlesborough - LU6 2HS

***excluding Built-In Appliances—In-store stock availability**