

# FOCUS



October 2015

The local village magazine just for Us!  
Eaton Bray, Edlesborough, Northall & Dagnall

# *The White Horse Inn At Eaton Bray*

Market Square  
Eaton Bray  
Beds  
LU6 2DG  
01525 220 231  
[www.thewhitehorseeaatonbray.co.uk](http://www.thewhitehorseeaatonbray.co.uk)



**Midweek fixed price lunch**  
**Monday to Friday 11.30am til 2.30pm**  
**Great traditional pub dishes**  
**1 course £6.50 : 2 course £10 : 3 course £13.50**

# **Try our Air conditioned restaurant**

**JAZZ AT  
THE WHITE HORSE  
1<sup>ST</sup> SUNDAY EACH MONTH**



# Focus Magazine Committee

**Joint Editor:** George Crutcher

7 Summerleys, Edlesborough 221637

**Email:** [george.crutcher@tiscali.co.uk](mailto:george.crutcher@tiscali.co.uk)

**Joint Editor:** Sally Siddons

34 Wallace Drive, Eaton Bray 221733

**Email:** [sallysid@hotmail.com](mailto:sallysid@hotmail.com)

**Dagnall Representative:** Sue Cawdell

10 Deans Meadow, Dagnall 01442 842200

**Circulation Manager:** John Plater

41 Church Lane, Eaton Bray 221095

**Treasurer/Leaflet Enquiries:** Ken Coates

10 The Nurseries, Eaton Bray 220868

**Advertising:** Sally Siddons

34 Wallace Drive, Eaton Bray 221733

**Design and Layout:** Tracey Moren

(Moren Associates Limited) 01525 229695

**Printed by:** PRIORITY Press

Dunstable 01582 699851

Copy for publication to the Editors by the

**10th of the month**

**Focus is online at [www.thefocusmagazine.co.uk](http://www.thefocusmagazine.co.uk)**

*Focus accepts no responsibility as to the accuracy or content of any advertising or articles published in 'this' magazine neither do they reflect the opinion of members of the Committee.*

*© Articles published in Focus may not be reproduced without permission.*

**Focus would like to remind contributors that the deadline for articles is the 10th of the preceding month.**

## Kindly Note

If the event you wish to advertise falls in the first week of the month, it is advisable to get the details into Focus a month earlier. The magazines are not delivered from the printers until the first of the month, therefore it takes a few days for them all to be circulated throughout the village.

✉ Editors

## Village Hall Bookings

To book your local village hall for an event please contact the following:

**Northall:** Lorna Cabbage Tel: 01525 220361

**Eaton Bray:** Norman Lee Tel: 01525 222831

**Dagnall:** Elizabeth Coates Tel: 01442 842550

**Edlesborough Memorial Hall:** Penny Pataky, Tel: 01525 229358

## Police Contact Numbers...

*making neighbourhoods safer together*

**General Assistance (Recommended Number): 101      Emergency: 999**

**Bedfordshire Police (Eaton Bray)**

Leighton Buzzard Police Station/Kathryn Horgan: 01582 473411

Typetalk: 18001 01582 473418

Email: [LPT.LeightonBuzzardLinslade&Rural@bedfordshire.pnn.police.uk](mailto:LPT.LeightonBuzzardLinslade&Rural@bedfordshire.pnn.police.uk)

**Thames Valley Police (Edlesborough, Dagnall & Northall)**

PCSO Jackie Dodson Mobile: 07800 703 524

Email: [NHPT@thamesvalley.pnn.police.uk](mailto:NHPT@thamesvalley.pnn.police.uk)

# Village Diary October 2015



## Weekly

- Mon-Fri (term time) Eaton Bray Pre-school, Eaton Bray Lower School, 01525 220468
- Mon-Fri (term time) Dagnall Under 5's, Dagnall Village Hall, 9.15am - 12.15pm, Mrs Ann Tobin 07816 358342
- Mon-Fri (term time) Edlesborough Pre-School, Edlesborough School, 01525 220431  
manager@edlesborough.bucks.sch.uk
- Mon-Thu (term time) Totternhoe Pre-school, mornings, Totternhoe Lower School, Michelle Urbanowicz on 01582 668841
- Mondays Pilates, 10.45am, St.Giles Church Hall, Totternhoe, Lisa: 07799 893489
- Mondays (term time) 2nd Eaton Bray Brownies, girls 7-10 years, Edlesborough Memorial Hall, 6 - 7.30pm,  
Contact Sandra Counsell 07979 521900
- Mondays Dagnall Community Choir, All Saints Church 7.45 – 9.45pm
- Mondays Weight Watchers, 7pm, Eaton Bray Village Hall
- Mondays (term time) Movement and exercise classes with a dance flavour, Northall Village hall 2-3.30.  
Contact Jan 01442 864271.
- Mondays Curtain Call Youth Theatre 5-7.30pm, Eaton Bray Village Hall, Gavyn 01525 220525
- Mondays Curtain Call Theatre Group - 7:30-10:30pm Eaton Bray Village Hall, Sheila -  
sdtwinkletoes@yahoo.co.uk
- Mondays KFFA ISTD Classical Ballet classes, 3+yrs, 4.15pm, Edlesbrough Memorial Hall,  
www.kfpa.co.uk
- Tuesdays Line Dancing, 1.30-3p.m., Eaton Bray Village Hall, Lyn Stubbs 220731
- Tuesdays Pilates, 10-11am, Eaton Bray Village Hall, Nicky Roussou 07861 162680
- Tuesdays Totternhoe Baby & Toddler Group, 9.30-11.30am, St. Giles Church Hall, Ruth Allen,  
01525 222468 or 07796 265174 or email ruthallen002@gmail.com
- Tuesdays Northall Baby & Toddler Group, 9:30-11:30am, (open in the Summer School Holidays)  
Northall Village Hall, Stacey Richmond 01525 222999/07957 607592
- Tuesdays Tap & Ballet Classes, JoAnn Latus School of Dance, 4-8pm, Eaton Bray Village Hall,  
01582 620576
- Tuesdays Circuit Training - Edlesborough School Hall, 7-8pm - www.simplesfitness.com
- Tuesdays Coffee Morning, Bring & Buy, Table Top Sale, 10-12noon, Salvation Army Hall,  
Booth Place, Eaton Bray
- Weds (term time) Cheeky Monkeys Under 5's playtime, 1pm - 2.45pm, Eaton Bray Village Hall, contact  
Rachel on 07789 760007
- Wednesdays Pilates, 7.15pm, Northall Village Hall, Lisa: 07799 893489
- Wednesdays Egyptian Dance Class, 7.30-8.45pm at Eaton Bray Village Hall. Contact: Soraya on  
07976 964316 for more details
- Wednesdays Northall & District Age Concern Wednesday Club, 10am - 3pm, Northall Village Hall,  
Contact Anna on 07854 230243
- Wednesdays Dynamic Yoga 6.30-7.30pm £5 Eaton Bray Coffee Tavern Keira 07936 693696
- Thursdays Yoga, Northall Village Hall, 11.30am-1pm 01525 377542
- Thursdays Baby & Toddler Group, Salvation Army Hall, Booth Place, Eaton Bray, 9.30-11.30am
- Thursdays Keep Fit, Edlesborough School, 8pm Tel: 01582 668735
- Thursdays Jazzercise, 9.30-10.30am, Eaton Bray Village Hall, Angela Veryard, 01525 715208
- Thursdays KFFA Street dance classes 4+yrs 4pm, Edlesborough Memorial Hall, www.kfpa.co.uk
- Thursdays Box-Fit - 7:30 - 8:30pm, Eaton Bray Village Hall - www.simplesfitness.com
- Thursdays Central Bedfordshire Children's Centres' Toy Library, 9-9.45am, Eaton Bray (School  
Lane) Public Car Park
- Fortnightly
- Fridays Keep Fit class, Edlesborough Mermorial Hall 10 - 11am
- Fridays Tap & Ballet Classes, JoAnn Latus School of Dance, 4-8pm, Eaton Bray Village Hall,  
01582 620576
- Fridays (term time) "Little Luvvies" baby ballet classes 10am-11.30am. Contact Emma Whittemore on  
01525 376124

# Village Diary October 2015



- Fridays (term time) Kids Club 6:00pm to 7:00pm Grace Baptist Church, Edlesborough (across from the post office)
- Saturdays Jazzercise, 9.30-10.30am, Eaton Bray Village Hall, Angela Veryard, 01525 715208
- Saturdays Drama Class for Children, 10.35am-12.35pm, Eaton Bray Village Hall, Claire Casey, 07792 508591
- Saturdays KFPA Musical Theatre classes 4+yrs www.kfpa.co.uk, 10am, Edlesborough Memorial Hall
- Sundays Sundays Worship at 11:00am and 6:30 pm Grace Baptist Church, Edlesborough (across from the post office) Barry 01525 229610 or Peter 01525 221048

## Monthly

- 1st Monday Eaton Bray Parish Council Meeting, 7.30pm, The Coffee Tavern
- 1st Monday Eaton Bray W.I. Meeting, 7.30pm. Eaton Bray Methodist Church Hall. Contact Barbara Collier on 01525 221401
- 1st & 3rd Tuesday Dunstable & District Orbit (social and charitable) Club meet at Dunstable Rugby Club at 8pm. For details contact 01525 222441 or 01582 755147
- 1st Saturday St. Mary's church, Eaton Bray Coffee Morning & Plant Sale, 10am - 12 noon
- 1st Sunday May to September, St Mary's Church, Edlesborough Open Day, 2-5pm
- 2nd & 4th Tuesday TOTS, St Mary's, Eaton Bray, 2pm
- 2nd Tuesday Dunstable & District Local History Society meeting, 7.45pm, Methodist Church Hall, Dunstable (opposite Wilkinson)
- 2nd Tuesday Edlesborough W.I. Meeting, 7.30 pm, Edlesborough Memorial Hall
- 2nd Wednesday St.Mary's Ladies Guild, 2pm, St.Mary's, Eaton Bray
- 2nd Wednesday Eaton Bray & Edlesborough Lions Club, 7.30pm, The Coffee Tavern
- 2nd Thursday CAMEO Coffee, tea & chat, 10am-12noon, Edlesborough Methodist Church
- 2nd Saturday Workshops Dynamic Yoga 9.30-11am £10 Eaton Bray Coffee Tavern Keira 07936 693696
- 3rd Thursday Edlesborough Parish Council Meeting, 7.30pm, Memorial Hall
- 3rd Sunday Lunch club 11.30 to 2.00pm, Eaton Bray Village Hall, Chris Hewitt 222288
- Last Saturday Coffee Morning, 10-12 noon, Edlesborough Methodist Church

## Other Regular Events

- 4th Beds Area Narrow Gauge Model Railway Club Meeting, 11.30am-4.30pm, Eaton Bray Village Hall
- 9th Leukemia Research Coffee Morning, 2 Dunstable Road, Dagnall 10.30 am. All welcome.
- 10th Cafe Community, Eaton Bray Methodist Church, 11am-1pm
- 20th Dagnall Over Sixties, 2pm, Dagnall Village Hall, Bangers and Mash lunch followed by an entertainment from "The Jolly Jazzers
- 26th ELF walk from Eaton Bray church, 9:30am

## One Off/Annual/Irregular Events

- 10th Quiz, Eaton Bray Village Hall, 7pm, Tickets £9, 01525 221411
- 11th The Great Edlesborough Fun Run, 10:30am, Edlesborough Green, Adults £10, Children £5 07747 618825
- 15-17th Front Row presents Murdered to Death, 7:30pm, Eaton Bray Village Hall, Tickets £7, 01525 222283
- 20th Edlesborough School Open Morning, 9:30-10:45am
- 24th Dagnall Community Choir in Concert, 7:30pm, £8, Box Office: 01525 220189



**EDaN Community Transport**  
Peter Williams: 01442 842506

# Village Notices



## Edlesborough School Open Morning

Tuesday 20th October  
9.30 – 10.45 a.m.

Our Open Day gives us the opportunity to show prospective families our wonderful school and more importantly allow you to experience the unique atmosphere at Edlesborough School.

No pre-booking for this event is required

We look forward to seeing you

## FOR SALE

Jupiter Flute  
SFL -511E

Good working order with box, cleaners and Flute music book

£75

Tel: 07734 111654

## FOR SALE

Antique pine book shelf

5 shelves inc top

41.5 inches long

47 inches high

7.5 inches width

£45

Tel: 07734 111654



## EATON BRAY PARISH COUNCIL



### Please come and help to run your village **BECOME A PARISH COUNCILLOR**

The Parish Council is nine members of the public

We come to each Parish Council Meeting in the Coffee Tavern on the 1<sup>st</sup> Monday of each month and spend on average around five hours each month advising and helping to run our village.

At present we have **two vacancies** – will **YOU** come and join us?

If yes, please contact the Parish Clerk

*You can also view our website for more details*



Heidi Head, Parish Clerk & RFO

Email: [clerk@ebpc.co.uk](mailto:clerk@ebpc.co.uk) - Telephone/Fax: 01525 221464 - Website: [www.ebpc.co.uk](http://www.ebpc.co.uk)  
Office Hours: Tuesday/Thursday/Friday 09:30-13:30hrs [messages can be left on answerphone]



# Carnival 2015

This year the Carnival Committee is delighted to be able to distribute £13,500 to local good causes. A meeting was held on 7th September at which the following distribution was made in line with the advertised procedure. We are very grateful to all those people and businesses that have contributed to this record total.

St Mary's Fabric Fund	£6,750	Edlesborough School	£150
Joss Searchlight	£1,688	Expedition - Alex Matthews	£100
Medical Detection Dogs	£1,688	Expedition - Emily Sanders	£100
1st E Bray & Edlesborough		Keech Hospice Care	£150
Scout Group	£200	Luton, Dunstable & District	
Appledown Rescue	£80	Branch of Cats Protection	£75
Cheeky Monkeys	£100	Pitstone and Ivinghoe Museum	
Curtain Call	£120	Society	£100
Dagnall School	£150	Police Charity Fund - Beds	£150
Dagnall Village Hall	£150	Police Charity Fund - Thames	
Downs Heart Group	£100	Valley	£150
Dunstable Air Cadets	£150	Riding for the disabled	£150
Eaton Bray Methodist Church	£100	Taskers Row Social Club	£100
Eaton Bray Parish Council	£125	Toddington Band	£150
Eaton Bray Play Equipment		Totternhoe Lower School	£150
Fund	£150	Trees for Edlesborough Green	£150
EB Academy	£150		
Edlesborough Parish Council	£125		

## Carnival 2016

We look forward to next year's Carnival, which, as usual will be on the first Saturday in July – that's 2nd July – when the theme will be "Myths, Monsters & Magic".

The Committee is looking for someone to take charge of Road Closures and parking – if you feel you could help with this please speak to Gordon Gray on 01525 220136.

## Vacancy - Dagnall School

We are currently looking for a cleaner for our school, to start with immediate effect. Hours can be flexible, ie before or after school and will be 2 hours per day over 5 days, with a deep clean in the holidays.

Dagnall School is a very small village school in Buckinghamshire with 23 delightful pupils and a lovely team of staff.

If you would be interested in joining the team, please give me a call on the school office number 01442 842473 or email the office on [office@dagnall.bucks.sch.uk](mailto:office@dagnall.bucks.sch.uk) to arrange for a look around the school and for an application form.

✉ Kathy Bovington, Dagnall School



## Services at St Mary's Church

**SUNDAYS :** 8.00am HOLY COMMUNION  
10.00am PARISH SUNG HOLY COMMUNION

**On Third Sunday of each month:**

**10.00am – WORSHIP FOR EVERYONE** a shorter, less formal service for families. (For anyone wishing to attend a service where Holy Communion is offered, there is a Family Communion at 10.30am at All Saints' Church, Dagnall, where visitors are assured of a warm welcome).

**WEEK-DAYS:**

**Tuesday: 2.00pm** TOTS (Tots on Tuesdays) (2nd & 4th Tuesdays)

**Wednesday: 10.00am** Holy Communion

*EVERYONE WELCOME AT THESE SERVICES*

## Your Low Fat Recipe for October

### Gammon with Lime and Ginger Salsa

per serving 207 kcal 2% fat

#### Ingredients

Gammon steak approx 100g

#### For Salsa

1 beef tomato diced

2 spring onions diced

zest and juice of 1 lime

1/2 teaspoon chopped fresh ginger

1 tablespoon chopped fresh chives

salt and freshly ground pepper

#### Method

1. Preheat grill to high

2. Trim any visible fat from gammon steak, then grill for 20 minutes, turning it regularly during cooking.

3. Meanwhile mix the salsa ingredients together in a bowl. Pour into a saucepan and heat.

4. Serve the gammon steak with the salsa plus 150g boiled new potatoes (with skins) and unlimited other vegetables.

## Eaton Bray Methodist Church

As usual during the holiday season our services have been shared with our fellow Methodists in Edlesborough who gave us a very warm welcome on two Sundays. Our Cafe Worship on the second Sunday in August was led by Richard Armiger who reminded us that on the seventh day of creation God rested and, in that same spirit, the Bible encourages to set aside time for relaxation and reflection. On the fourth Sunday Joan Gregory made a welcome return to our pulpit. Her talk was about the Christian duty to be a 'soldier of God', committed to the action and equipped with the armour of Faith.

As part of our concern for issues of justice across the world, we have been exploring

the conflict between Israel and Palestine by studying the book 'Israeli apartheid' by Ben White, an independent professional journalist. At our October and November lunches we will be supporting the charity 'Medical Aid for Palestinians' and increasing our awareness of the problems in the region.

#### Dates for your Diary:

Café Community

**Saturday 10th October** 11am - 1pm

**Saturday 14th November** 11am - 1pm

There will be a Craft Stall with handiwork at both these events.

Coffee Morning and Craft Sale

**Saturday 5th December**

10am - 12 midday



# A Letter from Rev'd Coralie



**Vicar: Coralie McCluskey**

**The Vicarage, 11 High Street, Eaton Bray - Tel: 01525 220261**

**Honorary Assistant Priest: Revd John Heffer**

**Reader: Gordon Gray (220136)**

**Church Warden: Catherine Hayden (220527)**

**Email: [admin@stmaryseatonbray.org.uk](mailto:admin@stmaryseatonbray.org.uk)**

**[www.stmaryseatonbray.org.uk](http://www.stmaryseatonbray.org.uk)**

*Seasons of mist and mellow fruitfulness,  
close bosom friend of the maturing sun;  
conspiring with him how to load and bless  
with fruit the vines which round the thatch eaves run;  
to bend with apples the moss'd cottage trees  
and fill all fruit with ripeness to the core.....*

Autumn is with us and these few lines from John Keats poem *Ode to Autumn* seem to sum up the beauty and the bounty of Autumn. The return of crisp days and cold evenings remind us that we are on the verge of Winter but that's no excuse to hibernate. October is about long leafy walks, glorious colours and making the most of daylight hours before the winter darkness descends.

Throughout the church year there are countless opportunities to celebrate the lives of the saints. In October we have the opportunity to remember 39 saints including;

St Francis of Assisi (1226), Edith Cavell (1915) who was executed by firing squad for smuggling British soldiers from Belgium into Holland as well as protecting those who worked with her and Luke the Evangelist who is believed to have been the author of the Acts of the Apostles.

St Luke the Evangelist

The gospel that bears his name is a wonderful narrative of the life of Jesus from the nativity to his death and resurrection. It is only in the gospel of Luke that the story of Mary's Annunciation, her visit to Elizabeth, the Magnificat, the Presentation and Jesus' remaining in Jerusalem are told. Luke was a Gentile and his writing makes it clear that the good news of salvation is for all, regardless of gender, social position or nationality. If you are ever tempted to open the bible head for Luke's version, it is a good read and the most accessible.

**St Mary's Memorial Service October 25th at 3pm**

This year we will once again be holding an afternoon Memorial Service rather than the traditional All Souls Service. The service will be a mix of music, readings, prayer and silence as we remember family and friends who are no longer with us. There will an opportunity to light a candle in remembrance and after the service have a cup of tea and cake. The list, for names of those you wish to be remembered, will be available in the church, I will also pray for them at Evening Prayer (5pm) on All Soul's Day, Monday 2nd November - you are welcome to join me for that quiet time.

*Coralie*

# Join the Adventure!

## Your local group needs you.....

All Scouting sections in the 1st Eaton Bray and Edlesborough Scout Group have exciting and varied programmes in place giving young people fun & challenging opportunities in Scouting over the next term and beyond.

Do you want to be part of our adventure?

Visit the Scouting website for more information <http://scouts.org.uk/get-involved>.

As it says on our website, you don't have to be an adventurer like Bear Grylls to get involved with Scouting.

We are always looking for members,

leaders, supporters and committee members and you might just have what it takes.

Volunteering with us is easy and flexible, there is bound to be a role you can play, and no matter how you get involved, we'll make sure you're properly trained and supported.

We are immediately recruiting for a Group Secretary and a Leader to help with the Scouts.

If you feel you could help – please get in touch.

1st Eaton Bray & Edlesborough Scout Group [ebescouts@cplus.co.uk](mailto:ebescouts@cplus.co.uk)



## Dagnall Community Choir

During the summer months we have been learning a variety of new music to add to our ever expanding repertoire, in preparation for the choirs Autumn Concert in Eaton Bray Village Hall on October 24th.

One of the selected pieces of music has expanded our understanding (or misunderstanding) of the American language, another has us singing in German and a further addition has us singing in Italian. Add to this the music we sing in Latin means we are now musically conversant in five languages (including English), although I doubt very much it would be helpful to arrive at an airport in Italy or Germany with this ability! To those who are curious of the American language let's just draw a veil over it. It's safer that way.

The Monday evenings spent in the Church at Dagnall during the summer have been wonderful. The weather has been good to us and the views over the fields towards Ashridge as the sun goes down are spectacular, as will be our renditions of the music learnt.

Please do come along on the 24th October to support your local Community Choir. It has members from all the four villages and beyond and even, if I say so myself, the standard of musical performance is satisfyingly high and we want to share this with you.

We were also able to enjoy superb summer weather for the choir's family barbeque. The food was excellent (thanks to our cooks), boules was played competitively by a number of members, we had a jig or two (that's a dance not a carriage) and had a thoroughly good time. I am looking forward to next year's barbeque already.

We will also be presenting two Christmas Carol concerts on Sunday 13th December at Dagnall Village Hall, one at 2.30pm when the emphasis will be on children with Father Christmas, hopefully paying us a visit, and a further concert at 5.30pm. This should enable us to fit in all those who wish to attend, as last year we did have a bit of a squeeze. These are free concerts and all will be made welcome. Further details as to obtaining tickets will be published later.



# UNICORN WINDOWS LTD

“WHERE QUALITY & SERVICE ARE NOT A MYTH”

[www.unicornwindows.co.uk](http://www.unicornwindows.co.uk)

**Tel: 01525 854272**



Unit 3 Youngs Industrial Estate, Stanbridge Road, Leighton Buzzard

**comput@mation**

computer support & services

## Computer Support for Business & Home

### Problem Solving:

Virus & Spyware Removal  
Internet & Email Assistance  
Fault Diagnostics  
Repairs & Upgrades  
Slow Running PC's

### Sales:

Desktops, Laptops & Tablets  
Printers & Peripherals  
Software

### Services:

PC, Mac & Linux Support  
Wired & Wireless Networks  
Data Recovery  
Install & Set-up  
Health Checks

On-site Visits:  
Office Hours & Evenings  
by appointment

For friendly advice call John Wallace: 07968 536068 or 01525 261381  
Email: [john@computamtion.co.uk](mailto:john@computamtion.co.uk)  
Web: [www.computamtion.co.uk](http://www.computamtion.co.uk)

Computamtion Services Ltd - Est.1999 with over 25 years experience  
9a Lower Way, Great Brickhill, Buckinghamshire, MK17 9AG

# Carpet & Upholstery Cleaning

Professional & Local

All work guaranteed - not happy, don't pay

Powerful equipment means drier much quicker than other methods

100% Guaranteed no chemicals left in carpet when dry therefore will not easily resoil & perfectly safe for children & pets

Recommendations account for 90% of my work

Absolutely no hard sell

Telephone Colin for a Free Quote

**DEEP-CLEAN**

**01525 851 811**

[www.deep-cleaners.co.uk](http://www.deep-cleaners.co.uk)

Email: [colin@deep-cleaners.co.uk](mailto:colin@deep-cleaners.co.uk)

## **EDLESBOROUGH SURGERY**

**11 Cow Lane Edlesborough**

**Enquiries - 01525 221630 Appointments - 01525 220333**

**[www.edlesboroughsurgery.co.uk](http://www.edlesboroughsurgery.co.uk)**

**Dr J R Bell, Dr Heather Counsell**

**Dr Tisha Patel**

**Dr Stephanie Johnston, Dr Kirsten Riemer**

Friendly village Practice offering a wide range of health services including coils/implants, minor surgery, travel advice, in house blood tests, on-line appointments and repeat prescription ordering. Four Nurse Practitioners offering acute clinics with same day appointments. Also, midwife, health visitors in attendance. Local District Nurse Service.

Long established training Practice with a rotation of qualified doctors.

## **EDLESBOROUGH PHARMACY**

**01525 223181**

**Pharmacist – Mitul Patel**

Friendly reliable professional service at the pharmacy

All doctors/dentists/veterinary and hospital prescriptions dispensed

Professional advice always available

Herbal/Homeopathic products

Special Orders on request

**Stagecoach Theatre Arts**  
 An hour to sing, an hour to dance, an hour to act... A lifetime to Perform!

Please contact the Principal, Wendy Ashman  
**01442 823181**  
 leightonbuzzard@stagecoach.co.uk  
 www.stagecoach.co.uk/leightonbuzzard  
 www.facebook.com/stagecoachleightonbuzzard



**SING! DANCE! ACT NOW!**



Theatre Arts Schools  
**Stagecoach**



**MMH**  
**Plumbing & Bathrooms**



**City & Guilds**  
 Qualified

- Full Bathrooms Installations inc Design, Supply, Tiling
- All General Plumbing work from : Leaking Showers  
 Dripping Taps • Toilets not flushing • Radiators • Drains

Call Mark for a **FREE** no obligation quote **01525 220994**  
 All work fully insured and guaranteed. **07842 653832**

**Barry Cato**  
**Motor Repairs**

— Est. 1981 —

*Servicing, repairs and MOT's arranged*  
**Workshop at:**  
 r/o Norfolk House Farm, Harling Road  
 Eaton Bray, Dunstable, Beds, LU6 1QY  
**Tel: 01525 221681 (workshop)**  
**07836 650015 (mobile)**

**30 Years Experience**  
**Domestic & Commercial Security**



**Burglar Alarms**  
**Redcare Monitored Systems**  
**Intercoms**  
**CCTV**  
**Access Systems**  
**Locks**



CERTIFICATE NO. NACG/2113

**Quality Installations – Competitive Prices**  
**Insurance Approved** **Free Surveys**

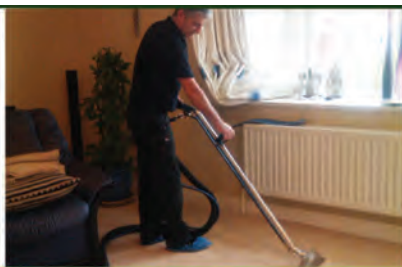
**AAA SECURITY**

**01525 378222**

Email: [sales@aaasecurity.co.uk](mailto:sales@aaasecurity.co.uk)

[www.aaasecurity.co.uk](http://www.aaasecurity.co.uk)





Local family run business - Not a franchise

All chemicals used are Eco-friendly, non-toxic, non caustic and non allergenic  
**All work guaranteed and fully insured**

All products are Child, Pet and Pregnant Safe

- Ovens & Hobs
- Extractor Hoods
- Microwave Ovens
- Agas
- Fridges
- Carpets
- Rugs
- Upholstery
- BBQs
- Freezers



☎ 01525 22 19 22 or 0800 122 3393

🌐 [www.ecotechovenandcarpetcleaning.co.uk](http://www.ecotechovenandcarpetcleaning.co.uk)

@ [info@ecotechovencleaning.co.uk](mailto:info@ecotechovencleaning.co.uk)

# *Dominic Woolcott*

## Painter & Decorator



- Internal & External
- Plastering & Coving
- Insurance Work
- 20 Years Experience
- Competitive Rates

**For a professional job call:  
01525 229682 or 07747 042879**

# P. DYER ELECTRICAL

For all your Electrical & Testing & Inspection needs

- Re-wires
- Testing & Inspection
- Security Systems/Lighting
- LED & Low Energy Lighting
- Decorative Lighting
- PAT Testing
- Fuse Boards
- Fault Finding/Repairs

Fully insured, Part P registered, all work guaranteed.  
Fast, friendly, reliable, local electrician. For a free,  
no-obligation estimate, call Paul on:



**Tel: 01525 222109**  
**Mobile: 07850 682815**



David John Harris



(Established 1992)

All Fencing Work • All Gates • Paving • Patios  
Driveways • Shingle • Hedge Setting and Cutting  
Grass Cutting • Turfing Specialist • Exterior  
Painting Service • Sheds Small Building Work  
Trees & Shrubs Supplied

**Tel/Fax: 01525 221745**  
**Mobile: 07889 143713**

## WASHING MACHINE REPAIRS

ALSO  
DISHWASHERS, TUMBLE DRIERS,  
AND ELECTRIC COOKERS



Call  
**ANDERSON D.R.S.**

**01582 665764**

[www.andersondrs.co.uk](http://www.andersondrs.co.uk)  
SALES AND RENTALS AVAILABLE



## GYM & TONIC

WANT TO GET FIT, HAVE A  
HEALTHIER LIFESTYLE & IMPROVE  
THE WAY YOU LOOK & FEEL?

The following can be provided in our  
Gym in Edlesborough or in your home

- \* A Health & Fitness Consultation \*
- \* Personal Training \* Massage \*

Ruth Anderson Dip. PT & ST, Member of: Inst of Sports  
Therapists & Register of Nutritional Therapists

**Tel:01525 223074 Mob:07812 163979**



For all your painting & decorating requirements  
 Domestic and Commercial  
 call Max for a free estimate with no obligation  
[maxbro@btinternet.com](mailto:maxbro@btinternet.com)

## Abbott Flooring

- Carpet & Vinyl
- Laminate & wood flooring
- Domestic & commercial
- Supply, fitting & adaption
- Next day delivery
- All work guaranteed
- Free no obligation quotes
- No job to small

We provide a friendly, professional service at very competitive prices. If you require us to supply & fit or you just need some flooring fitted then give us a call.

Telephone 01525 220249  
 Mobile 07958 244536



# High Street Hair

66 High Street , Eaton Bray, Nr Dunstable, Beds. LU6 2DP

**01525 221252**

[www.highstreethair.co.uk](http://www.highstreethair.co.uk)

Monday	Closed
Tuesday	9 - 6
Wednesday	9 - 6
Thursday	9 - 8
Friday	9 - 8
Saturday	9 - 5

A Professional modern salon, Providing  
 Quality hair & nails services for the whole family.



JESSICA



TIGI®



think car, think...

# smartAUTOGROUP



Established locally for over 10 years

Car servicing, M.O.T & repairs  
Bodywork & maintenance  
Mobile car body repairs  
Accident & vandalism damage  
Alloy wheels, scratches, dents, stone chips & scuffs  
Fully equipped bodyshop & workshop  
Complete diagnostic equipment  
Dealer trained master technicians  
Genuine parts



Competitive pricing – up to 50% cheaper than main dealers!

## £10 off with this advert

Work Guaranteed • Free Vehicle Collection & Delivery • Customer Pick-Up & Drop-Off

Call us on **01582 664772** or visit [www.smartautogroup.co.uk](http://www.smartautogroup.co.uk)

Units 17 & 18a, Icknield Way Farm, Tring Road, Eaton Bray, Dunstable LU6 2JX



Bathrooms, Design & Installation

Tiling ♦ Heating ♦ Powerflushing ♦ Taps ♦ Leaks

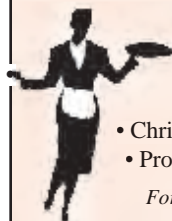
Call Outs ♦ Free Estimates Given



01525 222145



07971 559185



### Patricia's Cuisine

Catering For All Occasions

- Buffets, Dinners •
- Christenings, Weddings, Funerals •
- Promotions & Business Lunches •

*For Enquiries & Menu*

Meadside Farm, 104 High Street,  
Eaton Bray, Bedfordshire, LU6 2DP

**Telephone: 01525 222174**

## P.J.BRINKLOW

### Electrical Contractor

**01525 220469**

**07860 781330**

**43 Pebblemoor  
Edlesborough**

**pinstripes** signs  
**pinstripes** graphics  
**pinstripes** clothing

01525 220485  
07973 167779

**BUSINESS CARDS**

[www.pinstripesigns.co.uk](http://www.pinstripesigns.co.uk)

find us on facebook  
pinstripes signs graphics clothing

*Mark Janes Contracts*

**Felt Roofing - All Roofing Repairs  
and Property Maintenance**

*FREE ESTIMATES*



**t: 01442 877528**

**m: 07841 343470**

**e: mark.janes3@btinternet.com**

**Established 25 years**

*Approved Contractor  
for Local Authorities*

*For all your building needs look no further*



**BRIGGS**



**BUILDING & CARPENTRY SERVICES**

Established 1981

For a professional, friendly service call:

**(01525) 221767**

**(07970) 214439**

**Domestic & Commercial**

Extensions  
Renovations  
Conversions  
Alterations

New Builds  
Roof Repairs  
Kitchens  
Bathrooms

Patios  
Driveways  
Decking  
Garden Walls

Mini Digger, Skip Loader and Dumper Hire

**All Work Guaranteed**

**Free Estimates**

I have recently returned from the 23rd World Scout Jamboree in Japan and had the most incredible time volunteering as a member of the International Service Team. The Jamboree involved over 35000 people from about 150 countries all doing activities, learning about each other's cultures and camping together for 2 weeks.

The participants had activities to do and themes included culture (as well as a culture day in which everyone wore national dress and cooked traditional food), global development, science, nature, water, community and peace which involved a visit to Hiroshima to learn about the events of 1945. The activities were all run by IST members such as myself and the aims were to promote peace, unity and harmony. The participants who were all aged between 14-18 are the future and in teaching them these values there is a real possibility of making a difference.

My specific roles included helping in the Faith and Belief zone where participants could learn about Faiths and Beliefs from all across the world in



a safe environment. I also helped in the subcamp "Hakota" where my roles

included welcoming the Units, helping them in day to day activities, distributing food, cleaning the facilities and just ensuring that the kids all had the best experience we could possibly give them. A big factor in Japan was the heat and making sure that everyone stayed hydrated because the humidity and temperature were very high which made everything that little bit harder to do.

As well as working on camp we were given the opportunity to travel. Before travelling down to the Jamboree, the UK IST got to explore Tokyo where we experienced Earthquake simulators, saw a Sumo match

and climbed the Sky-Tree building. Whilst at the Jamboree we saw the local towns and saw many historic shrines and temples as well as the more modern karaoke bars!

I had an absolutely amazing time and would like to thank you all for your support in getting me there, the amount of people who helped is incredible and I'm so grateful for it.

✍️Gemma Johnson



*A picture from the opening ceremony showing the beautiful sunset and a few of the thousands of scouts present*

## Dagnall Over Sixties

Dagnall Over Sixties enjoyed an afternoon of Bingo and tea in August.

On September 15th they visited Wyevale Garden Centre at Bicester Avenue for lunch in their private room, followed by a browse around the centre and the selection of other shops in the complex. Kensworth Over Sixties joined us for this outing.

On October 20th we have our Bangers and Mash lunch in the village hall, followed by entertainment from "The Jolly Jazzers", a

regular visitor to Dagnall, much enjoyed by our members.

Our November meeting on 17th in the village hall includes speaker Hugh Grainger, who will talk about the intriguing topic "Do plants think?" This will be followed by tea and raffle.

On December 15th we have our Xmas Lunch. Carols, Crackers and Christmas Parcels !!

# Letter to the Editor...



Dear Editor,

I am writing in response to the letter submitted in the Aug/Sept issue of Focus because there are a number of points made in this letter that need clarification:

1. The Parish Council did not turn down the opportunity for children to play football in the village; Holman's Field and The Rye Recreation Ground have a formal arrangement for football that remains and was not in question. The only site in question was School Lane Recreation Ground.

2. The use of School Lane Recreation Ground by the football teams had been vociferously complained about at prior meetings by residents who lived nearby to this site. A subsequent questionnaire submitted to 81 houses nearest to the ground elicited 12 responses; 6 residents were against using the ground, 4 were in favour and 2 were ambivalent.

3. Parishioners who attend the parish meeting have a 10 minute open forum to express their concerns and direct any questions. Regular attendances show that, with time permitting, parishioners have been asked to comment briefly and contribute to agenda items (though strictly speaking the Parish Council are not obliged to do this).

In my experience most parish councillors have been only too willing to engage with any concerns outside the monthly parish meeting. In addition the Parish Clerk, Heidi Head, has always responded speedily to any questions that I have raised or correspondence I have requested.

Members of the Parish Council, most of whom have full time jobs, are volunteers and without them Central Bedfordshire would represent the village and its affairs; with the recently erected dog notices and the subsequent confusion they have caused this prospect fills me - and should fill you - with alarm. Though I appreciate that time constraints can restrict regular attendances at the Parish Council meetings I would urge villagers to partake in attending to ensure an informed and accurate picture of village affairs.

✍️ Ruth Archer

## Eaton Bray W.I.

theWI  
INSPIRING WOMEN

Deirdrea welcomed all the members and handed out a birthday card to Elsie.

At this point the speaker for the evening, Ruth Gill was introduced. Ruth talked the members through 100 years of W.I. More on this subject can be seen elsewhere in Focus. The social time included a snack of delicious sandwiches and cakes, catering by Patricia's Cuisine.

Deirdrea then called for some sort of order and took the members through the agenda as follows. Everyone agreed that the Vintage Garden Party held in the summer was a great success, especially the Pimms and posh nosh! At this event, each member was given a shopping bag to commemorate the occasion, which was the start of the celebrations for the

W.I. Centenary. Also the group outing to Cambridge and W.I. outing to the Cotswolds were enjoyed by all who participated.

There will be a birthday dinner on the 9th November at the Old Hunters Lodge at a cost of £19, monies and choice of food needs to be handed in at the October meeting. Members were reminded of the Flower Festival that took place in the Priory Church in Dunstable, again to celebrate the Centenary. It was agreed to provide a poppy wreath this year and have a Christmas Charity collection. Finally the Raffle was drawn and prizes were won by Sally and Judy.

The speaker for October will be Tim Corkett, a gardening volunteer.

# Letter to the Editor...



Dear Editor

We would like to thank the contributor to the Aug/September edition of Focus, for their recognition of the value of regular locally provided sport for our village youngsters, and specifically for their support of organised football at the School Lane recreation park.

As a club, we were deeply saddened by the decision of the Parish Council to take away access for training and matches for our younger teams at the park. At School Lane we were able to develop our younger 5 and 7 a side teams for 7 to 10 year olds in organised training and matches, an option that is now no longer available to us. Whilst we value and appreciate the ongoing access to pitches at The Rye and Holman's field in the parish, these pitches support the 9 and 11 a-side formats for our older teams.

As such, we now have had to extend our pitch provision beyond local boundaries to Kensworth. Hardly local, with families travelling out of the village. Their Parish Council have welcomed our all-inclusive sport for all approach, and actively encouraged us to use their green as an alternative resource to boost our available playing areas. No spending money on surveys, no lengthy votes, no consultation, just welcome support for the provision of sport for young people.

As a village club we always strive to be "good neighbours", respecting the views of our local Parish Councils and local residents. We recognise the issues that bad parking can cause and note the recent School Lane residents' survey results. Of 81 houses polled, 6 were against and 4 were in support of the club's use of the park. Hardly a landslide.

We do however take these views on-board and hope to continue to work with the Parish Council in promoting careful driving and considerate parking - hopefully something we can do alongside other regular users of the park.

The councillors, like our coaches are volunteers, elected yes, but more importantly freely giving of their time and often managing existing work commitments alongside parish matters. As such we empathise with the community spirit with which they serve.

We will always support and engage in open, honest discussion and debate which is essential to ensure all views are heard. Sadly this has not always been the case, as your previous contributor expressed.

Having recently experienced a very different approach in Kensworth, here's hoping that working together we can replicate some of the same goodwill in the future within our own Parish boundaries to the benefit of our local youngsters.

EB Lions AFC

## All Saints' Church, Dagnall

### Services in October 2015

Sun. 4th Oct.	9.00 am	Eucharist
	10.30 am	Morning Service
Sun. 11th Oct.	10.30 am	Morning Service
Sun. 18th Oct.	10.30 am	Family Communion
Sun. 25th Oct.	10.30 am	Family Service
Sun. 1st Nov.	3.00 pm	United Service for the Festival of All Saints

Sunday School meets each Sunday at 10.30 am except when there is a Family Service



# Edlesborough Parish Council News

## Including Edlesborough, Dagnall and Northall

### Allotments

Rent collection will take place in Edlesborough Memorial Hall on Saturday 3rd October for Edlesborough & Northall Allotments and at Dagnall Allotments on Sunday 4th October. Rents Due: 20 pole plot £36:00, 10 pole plot £18:00.

In order for the Parish Council to save on administration expenses it would be very much appreciated if tenants could pay their rent on the specified date or arrange for them to be sent to the Clerk at 15 Summerleys, Edlesborough, LU6 2HR (cheques payable to "Edlesborough Parish Council").

Due to the high clerical costs involved in collecting late allotment rents, the Parish Council have introduced a £10 late payment fee to be charged if full payment is not received by the end of October 2015. Any parishioner interested in taking on an allotment should register their interest with the Clerk.

### Dogs on Dagnall Allotments

Following many complaints about dogs on Dagnall allotments the Council reminds parishioners that All dogs MUST be kept on a short lead whilst on the allotments.

PLEASE

- **DO NOT** allow your dog to stray onto the allotment plots.
- **KEEP** to the public footpath that runs from Chestnut Close to Studham Lane.
- **DO NOT** exercise your dogs on the main path running from Main Road South to Studham Lane – this is NOT a public footpath and must not be used for exercising dogs.

**ENSURE** you clean up after your dog.

### Street Lights

Phase 1 of the Parish Councils new

streetlight program is now complete.

Northall now benefits from new LED lights, also some faulty lights in Edlesborough have been replaced with the new lights. Phase 2 will include all Dagnall lights and any other reported faulty lights in Edlesborough. Any comments on the new lights can be forwarded to the Clerk. Please remember to report faulty streetlights to the Clerk.

### Northall Village Hall Solar Panels

Northall Village Hall now has Solar Panels on the roof. The Village Hall Committee are working hard to make the hall as environmentally friendly and self-sufficient as possible. Cllr Cabbage will be giving a presentation about this project on Thursday 16th October at the Parish Council Meeting.

### FAQ's Relating To The McCann Planning Application – The Parish Council's Perspective

#### 1. What protection is afforded to the AAL?

As stated at the Parish Council meeting, it is fairly evident that the biggest hurdle that McCann have to overcome if their application is to be successful is the AAL issue. This is apparent from studying the Design and Access Statement (D&A Statement), the Landscape and Visual Impact Assessment (LVIA) and the notes relating to the pre-application meetings that DLP held with AVDC.

The scheme they initially presented to AVDC was the scheme that they used at the public exhibition in the Memorial Hall (Option 1 on page 38 of the D&A Statement). AVDC apparently made it abundantly clear that the 'green gap' was perceived as an important landscape feature and as a consequence DLP went back to



the drawing board and produced a further scheme which divided the development into two parts with a gap of down the middle (Option 2 on page 39 of the D&A Statement). When this scheme was viewed unfavourably by the Landscape Officer, DLP went back with a third option where the width of the “green gap” had been increased to approximately 45m (Option 3 on page 40 of the D&A Statement). This would appear to be the scheme that the Landscape Officer’s comments on page 55 of the LVIA relate to.

By this time it is fairly evident that the discussion had focussed on how wide that gap would need to be to allow at least some development to take place. The Planning Officer’s email dated 5th May (page 57 of the LVIA) acknowledges that it would be “hard to resist” a scheme with a suitable gap, but there was quite obviously a difference between what AVDC thought was a suitable gap compared with DLP.

The final scheme which now forms the planning application includes an even wider “green gap” than any of the previous options, but we’ve yet to hear the Landscape Officer’s view on whether or not he considers it to be acceptable. In the final reckoning however, it will be his/her view of the matter that the Case Officer will be guided by, not the Parish Council’s. The planning officers are not seeking the Parish Council’s opinion or support on the matter. Any opinion that we propound would be totally disregarded if it didn’t align with the Landscape Officer’s. It’s far more productive to limit our comments to issues where we might be able to influence the final outcome.

AVDC are currently adopting quite a hard line over landscape protection as witnessed by their recent refusals of the Ivinghoe applications (which are not even on AAL sites) and of course the refusals to allow

Manor Farm and the houses in Peblemoor to extend their garden curtilages. We shall just have to wait and see.

## 2. Why has the Parish Council expressed support for limited housing on the site?

The Parish Council has not expressed support for limited housing on the site. The PC has opposed this application. It is acknowledged that we did include a comment that the site in question might be appropriate to accommodate at least some of the growth that the village will almost certainly be required to take over the next twenty years. That is not the same thing as supporting the application as some people seem to be suggesting. The next local plan (VALP) will almost certainly direct that villages like Edlesborough will have to take a certain amount of growth. We don’t know how much yet, but the most likely number is about 100 houses. It could be more, it could be less, that’s just our best estimate at this time. Obviously when the time comes we will seek to minimise the number but we have to face reality. Those houses will have to go somewhere and to rule out the only open space within the built form of the existing village (other than the Village Green) would be ludicrous.

None of us who live next to open countryside want it to be built on and the residents of Kings Mead and Chiltern Avenue are no different. However, we as a Council have to accept the reality of the situation and adopt a strategy that limits the harm to the community in general. We can’t try to protect just one area at the expense of others. You suggest an alternative site for new housing on the edge of the village and we’ll introduce you to a host of other residents who would be directly affected by it and would totally disagree with you.

## 3. What did the Parish Council discuss with DLP?

In our discussions we made it very clear that

we were opposed to a large development on the site as proposed by McCann. We acknowledged that the new local plan VALP, would impose a housing quota on us and that was likely to be of the order of 100 dwellings. We made no predictions as to where those houses might go. Until AVDC publish the housing allocations section of VALP and we develop a neighbourhood plan, that is a complete unknown.

We did however state that if their application was successful despite our opposition, we would like to see the views of the AAL opened up as much as possible, we would like to see improvements in the parking situation outside the School, and we would like to see a mix of housing that matched the identified local need for starter homes and bungalows rather than large detached houses. We were also very aware that any planning consent would be subject to an S106 agreement that would generate leisure and recreation funding for the benefit of the Parish. The thinking was then and still is, that any resulting S106 money should go towards the funding of the new pavilion and we would prefer it not to be watered down by the provision of a second lot of play equipment. Unfortunately from the comments submitted by the Recreation Officer, it would appear that because of the 400m rule, just over £37,500 of any S106 leisure and recreation money would have to be spent on another playground. As with so many things, the Parish Council has very little say in the matter.

#### 4. How much influence does the Parish Council have?

Some people appear to be labouring under the misapprehension that AVDC only need a bit of encouragement from the Parish Council to justify resisting the application in its entirety. That unfortunately is not the reality. In making their decision the planners will have to weigh up the balance

of things for and against the development based on their interpretation of current local and national policies. If the Parish Council's interpretation of policy is at odds with theirs or the specialist officers that advise them, they simply ignore us. That is why we confined our objections to those areas where our local knowledge might be recognised and acted upon, rather than trying to tell them how they should be interpreting policy.

They will also have to make a judgement on whether or not a refusal by them would be supported by the Planning Inspectorate if DLP take the decision to appeal, which they almost certainly would do. If a developer's appeal is successful, AVDC have to pay the costs, so they tend to be very cautious.

*We're on the same side. We're opposing the application as well. It's just a question of strategy.*

#### **Reporting potholes, overgrown hedges, fly tipping, etc.**

Over the past month the Council have received a high level of reports/complaints about potholes, damaged pavements, overgrown verges, obstructed footpaths, fly tipping, etc. Please note that these issues need to be reported directly to Transport for Bucks this can be done via their website <http://www.transportforbucks.net/Tell-us.aspx> The website is easy to use, the exact location can be pinpointed on a map and a photo of the problem can be uploaded to help TFB prioritise the issues.

If you consider the problem to be dangerous or an emergency, please call 01296 382416 (9am-5.30pm Mon-Thurs, 9am-5pm Friday) or 01296 486630 (out of hours and weekends).

#### **Neighbourhood Plan**

The Council have agreed to begin the process to apply for a designated Neighbourhood Area. This is the first step on



the way towards creating a Neighbourhood Plan. It is important to note that whilst a Neighbourhood Plan cannot prevent growth it can help to shape it and control where it happens. Full information on the plan process and community consultation will be shared in due course.

**AVDC's Recycling & Waste - Village freighter service ceases**

Following the successful launch of AVDC's new bulky waste collection service, we have ceased to operate the village freighter service.

The service had reduced in popularity with parishes in recent years, with fewer parishes making bookings and those that do becoming less frequent, thus becoming unsustainable.

Now residents can apply for their bulky items taken away using our bulky waste collection service instead, where large items such as furniture or large kitchen appliances can be collected direct from their home. This means they can have collections at a time and place that is more convenient to them, rather than having to store items for long periods of time, and transporting them to the freighter on an increasingly infrequent basis.

AVDC recycles as much of the bulky waste we collect as possible, passing much to charities to be reused by families in need, whereas items collected in the village freighter service were taken straight into landfill, incurring landfill tax payments.

When collecting bulky waste, we'll also collect any bagged small electrical items or textiles from households for free at the same time.

To book a bulky waste collection, residents should go to our website and complete the online booking form [www.aylesburyvaledc.gov.uk/bulkyitem](http://www.aylesburyvaledc.gov.uk/bulkyitem)

**Speedwatch**

The EDaN Traffic Management team are

looking for volunteers to help man their Sentinel device. If you have an interest in slowing down traffic in the villages or are concerned about Road Safety please contact Louise Turner on 01442 834123 or by email at [louisefanthorpe@yahoo.co.uk](mailto:louisefanthorpe@yahoo.co.uk)

**Edlesborough Parish Council Meetings**

The next Edlesborough Parish Council Meeting will take place in Northall Village Hall on Thursday 16th October 2015. The meeting will commence at 7:30pm.



All Parishioners are welcome to attend and may ask questions, raise issues and give suggestions during the Open Forum.

The full minutes of the Parish Council meetings are normally available to view on the website or from the Parish Clerk.

**Contact Information**

Clerk to Edlesborough Parish Council:

Clerk: Penny Pataky 01525 229358

Email: [clerk@edlesborough-pc.gov.uk](mailto:clerk@edlesborough-pc.gov.uk)

Website: [www.edlesborough-pc.gov.uk](http://www.edlesborough-pc.gov.uk)

Facebook:

[www.facebook.com/EDANParishCouncil](http://www.facebook.com/EDANParishCouncil)

**Eaton Bray Cricket Club  
100 Club Winners**

**July 2015**

£100	Debbie Wright	No.2
£25	Andy Gypps	No.10
£10	Joan Hing	No.47

**Aug 2015**

£25	Terry Flitton	No.19
£10	Sue Ellerton	No.16

**Sept 2015**

£25	Paul Berrett	No.110
£10	Anne Todd	No.26

Eaton Bray Cricket Club is kindly sponsored by Meadow Marquees, Houghton Insurance & Gastex Services

# Music at St Mary's

## Poppy Prom Saturday 7th November

One of the musical highlights of the year for *Music at St Mary's* is the Poppy Prom, Concert, on 7th November at 7.30pm, in aid of St Mary's, Eaton Bray, and The Royal British Legion.

The evening combines the solemnity of words and music from *The Festival of Remembrance* with the joyful music of *The Last Night of the Proms*. This year's musicians will be the South Beds Concert Band, St Mary's Choir and Dagnall Community Choir along with soloists, Min-

Min Peaker and Bernadette Freed.

The programme includes music by Gustav Holst, Ron Goodman, Ennio Morricone, Sir Edward Elgar, George Frideric Handel and Tomaso Albinoni as well as favourites from *The Last Night of the Proms* by Elgar, Henry Wood, Arne and Parry.

It will be a wonderful evening of entertainment and is likely to attract a sell out audience. Hurry to get your tickets, priced £12.50 and £10, from the Box Office, 01525 222283 and don't forget to bring your flags.

## Edlesbray Leisure Fellowship (ELF)

Hello Everyone,

Since the last issue of Focus the summer seems to have flown by. We are almost into autumn, summer blossoms are fading but autumn shrubs are beginning to appear. Enjoy the colours. It has been a quiet time for the E.L.F. group and we hope that everyone has enjoyed all the things that they have done.

Once again, unfortunately, the walk scheduled for the 27th July was cancelled.

The re-scheduled visit to Audley End on July 20th did take place and the group had a good visit. They met for morning coffee and cake. They found the English Heritage house and gardens very interesting. The group met for lunch and then continued their visit. Thanks to Brian F for arranging this visit.

Graham arranged the visit to Hatfield House on July 9th. The group met for morning coffee and cake and it was decided to tour the house in the morning and the gardens in the afternoon. They met for lunch and then explored the gardens. Everyone enjoyed the visit and the weather was good. Thanks go to Graham for his organisation.

A planned visit to Wisley Gardens was cancelled until next year. This was on the

advice of the management as, owing to the weather this year, the gardens were not at their best.

Our lunch out on 20th August took place at the White Horse, Eaton Bray. After several years, it was a welcome re-visit enjoyed by all who attended. Thanks to Val for the organisation.

Unfortunately, the visit to The Heritage Motor Centre at Gaydon has been cancelled.

The walk on 24th Aug, led by Martin, went ahead in spite of not very pleasant weather. Starting at the Three Locks on the Grand Union Canal North of Leighton Buzzard, the group followed the canal to Stoke Hammond. Leaving the canal they walked towards Great Brickhill, turning south towards Rushmere Park continuing to join the Grand Union Canal and turning north; returned to the start. A distance of 5 miles was covered.

The meeting at the Coffee Tavern on 17th September and the walk on the 20th September will be reported in the in the November issue of Focus.

### October Dates

Monday 26th October

Walk from Eaton Bray Church 9.30 a.m.

# Thinking of Selling or Letting?



Our success is built on our reputation of excellent customer service.



[www.christopherpallet.com](http://www.christopherpallet.com)



Offices in Edlesborough, Wendover & Aylesbury

65 Moor End, Edlesborough, Bucks, LU6 2HN ♦ T 01525 222333 ♦ F 01525 222042 ♦ E [edlesborough@christopherpallet.com](mailto:edlesborough@christopherpallet.com)

## IRON OUT

Complete Laundry Service  
Shirt Service  
Duvet Cleaning  
Ironing

Free collection & delivery from home or office

01582 667332 / 07885 320042  
Email: [ironout@aol.com](mailto:ironout@aol.com)

## D NICHOLSON PLUMBING REPAIRS and INSTALLATIONS

NO JOB TOO SMALL



• Emergencies • Free Estimates  
• No call out charges

Dave Nicholson

**MOBILE: 07976 975604**

**HOME: 01525 872335**

City & Guilds  
Qualified

## R.J.O'CONNELL BUILDING SERVICES

EXTENSIONS, PATIOS,  
DRIVEWAYS, ROOF REPAIRS  
AND PROFESSIONAL  
DECORATING SERVICE

**TEL: 01296 681323**

**MOB: 07855 236726**

## Will Kimberley Garden Services 01442 255784

Phone for a free no obligation written estimate  
[wkgardenservices@btconnect.com](mailto:wkgardenservices@btconnect.com)

- High hedges a speciality
- Fences erected and repaired
- General garden tidy up's
- In fact any job in the garden!

# Make a Will

AND LASTING POWERS OF ATTORNEY

## Protect Your Home 100%

**YOU DECIDE**, who is to run your affairs, who gets what, guardians etc, not the State.

**MINIMISE RISK** of Inheritance Tax and the disinheritance of children.

### Best Price Guarantee

from specialist Solicitors and professional Will Writers since 1999

FREE HOME VISIT

For a **DAYTIME** or **EVENING** appointment call

# 01525 220644

[www.wisechoicewills.co.uk](http://www.wisechoicewills.co.uk)

from  
**CARE FEES**  
and  
**PROBATE COSTS**



Will Trusts & Probate Practice

*A wise choice*

MAKING A WILL HAS NEVER BEEN EASIER

# ASPECT

YOUR LOCAL ELECTRICIAN  
TOTTERNOE  
OVER 20 YEARS EXPERIENCE

## ELECTRICAL

CONSUMER UNIT UPGRADES (FUSE BOARDS)  
LIGHTING - INTERIOR, EXTERIOR & SECURITY  
REWIRING  
NEW INSTALLATIONS  
TESTING & INSPECTION

ALL WORKS TO CURRENT WIRING & BUILDING REGULATIONS  
PART P CERTIFICATED & FULLY INSURED



CALL STEVE ON  
07976 283969 / 01582 665068  
[aspect@sparky.me](mailto:aspect@sparky.me)



**EXCEEDING EXPECTATIONS IS JUST PART OF OUR SERVICE**



If you're **selling, letting** or **buying** a home, make it happen with your local estate agent



01525 220605 • [info@giblinproperty.co.uk](mailto:info@giblinproperty.co.uk)  
[www.giblinproperty.co.uk](http://www.giblinproperty.co.uk)

# THE WORKTOP SPECIALIST

**DELIVERING OUTSTANDING QUALITY & SERVICE FOR ALL YOUR WORKTOP & JOINERY NEEDS FOR OVER 50 YEARS**

- FREE HOME MEASURING SERVICE
- CUTTING & EDGING SERVICE AVAILABLE
- VISIT OUR BRAND NEW SHOWROOM

Abbey Gate, Boscombe Road,  
Dunstable, Bedfordshire, LU5 4FA

Tel: 01582 668 973 Fax: 01582 608 227  
Email: [sales@dunstablelaminates.co.uk](mailto:sales@dunstablelaminates.co.uk)  
Web: [www.dunstablelaminates.co.uk](http://www.dunstablelaminates.co.uk)



@DLaminates



Dunstable Laminates



**D R Property Services**

Kitchens  
Bathrooms  
Repairs & Improvements

01525 237498  
07970 260518

[drpsuk.pt@gmail.com](mailto:drpsuk.pt@gmail.com)




**Café masala**  
*Exquisite Indian Cuisine*

We Cater for Office or Private Parties and don't forget to try our Sunday Buffet  
10% Discount on all Takeaway Orders Over £12  
Fully Licensed & Air Conditioned  
Open Seven Days a Week  
Hours: 12 Noon to 2.30pm & 6.00pm to 11.30pm  
**Tel: 01525 22 22 64**  
63 Bower Lane · Eaton Bray · Dunstable · Beds · LU6 1RB  
email: [taraque@hotmail.co.uk](mailto:taraque@hotmail.co.uk) · [www.cafemasala.com](http://www.cafemasala.com)

**Anne Johnson D.O.**  
**Registered Osteopath**

6 Moor End,  
Eaton Bray

01525 221958  
07957 250682



**I'M REGISTERED**  
Registration no. 1495  
[www.osteopathy.org.uk](http://www.osteopathy.org.uk)

# alto window cleaning

*A reliable and professional service.....*

- Window Cleaning
- Conservatory Cleaning
- Fascia & Gutter Cleaning
- Solar Panel Cleaning

**T: 01525 234120**  
**M: 07807 973871**

## AARON FENCING

ALL TYPES OF DOMESTIC & COMMERCIAL  
FENCING & DECKING WORK UNDERTAKEN

*FREE ESTIMATES*  
*FULLY QUALIFIED & INSURED*  
*PERSONAL SERVICE AT COMPETITIVE PRICES*

**TEL: 01582 665779**  
**MOBILE: 07798 927272**

**7 STATION ROAD, DUNSTABLE, LU5 4HS**

## YEARDYE

*Luxury Bathrooms*

A family-run  
business for  
over 25 years

DESIGN  
SUPPLY  
INSTALLATION



[www.yeardyeluxurybathrooms.co.uk](http://www.yeardyeluxurybathrooms.co.uk)

email: [bathrooms@yeardye.com](mailto:bathrooms@yeardye.com)  
T: 01296 706220 T: 01525 222717

Buy Direct From Our  
Own Farm

Master Card

VISA

From **Ivinghoe Turf**

- Commercial & Domestic
- Small Orders Welcome
- Bark, Grass Seed & Fertiliser
- Laying Service
- Discount on Larger Orders
- Screened & Blended Topsoil
- All Year Availability
- Forklift Delivery Available



ROLAWN<sup>®</sup>  
Approved Rolawn  
Stockist

Family firm farming since 1949

**ALL AREAS**

Freephone :

**0800 043 5061**

[www.ivinghoeturf.com](http://www.ivinghoeturf.com)

The Bungalow, Vicarage Farm, Ivinghoe, Leighton Buzzard

## ARC Contract Services Ltd

- Painting & Decorating • Plastering
  - Wall & Floor Tiling • Door Hanging
  - Bathroom & Kitchen Installations
- 20 years experience

All work guaranteed and fully insured

Call Adrian : **01582 539179**

Mobile : **07789730580**



**WESTROPE BROS.**

**LAWN MOWER SERVICES**

ALL TYPES GARDEN MOWERS SERVICED

**THE RYE, EATON BRAY**

**Tel: Eaton Bray 220587**

# Gas Boiler Servicing

Over 40 years experience

Have your boiler serviced by a **Gas Safe**  
and **CORGI** registered engineer

Other services available:

Maintenance, repair and installation of all domestic gas appliances including LPG. Boiler installations, Landlord Safety Certificates and Power flushing.

Free Quotes, no call out fee, and free friendly advice on all of the above.

## Edwards Gas & Heating Services

Eaton Bray



# Tel 01525 220626

[www.edwardsgasandheating.co.uk](http://www.edwardsgasandheating.co.uk)  
[stevethegas@orange.net](mailto:stevethegas@orange.net)



## Vicky

The Dog Grooming Specialist  
[www.vickysdogcare.co.uk](http://www.vickysdogcare.co.uk)



*With a reputation for offering an exceptional personal service*



- Over 29 years of professional experience
- Trained at the London Academy of Professional Groomers to the highest City and Guilds standard
- Dorwest Veterinary Trained
- Member of the Pet Industry Federation
- Sympathetic and gentle handling of all dogs
- **FREE** Health check with every grooming session
- **No cages used! No cage dryers!**
- One to one personal attention.....loads of TLC

### Where Dogs Come First!



Mobile: 07796 445416

Telephone: 01525 222775

Email: [enquiries@vickysdogcare.co.uk](mailto:enquiries@vickysdogcare.co.uk)



*Committed to the highest standards of animal welfare and customer care*



Over 30  
Years  
experience.  
FREE  
Quotes

# Misty Double Glazing?

Over 30  
Years  
experience.  
FREE  
Quotes

**KEEP YOUR WINDOW FRAMES...  
... WE JUST REPLACE THE GLASS!**

- UPVC • Aluminium • Or Wood

Because we replace just the glass the repair is a  
Fraction of the cost of a complete replacement window.

BEFORE



AFTER



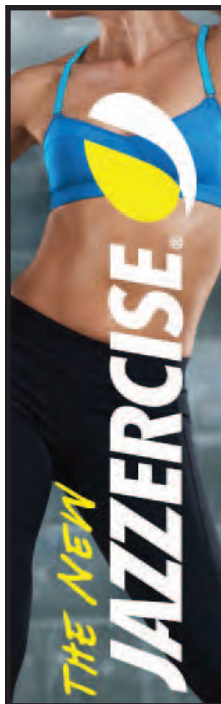
[mistydoublinglazing.co.uk](http://mistydoublinglazing.co.uk)

**QUALITY GLAZING SERVICES**

**01525 876808**

**WE ALSO REPLACE BROKEN...**

- Glass • Handles • Hinges & Locks
- AND REPAIR...Patio Doors & Conservatories!**



**JAZZERCISE  
DANCEMIXX  
CLASSES  
AT ST MARY'S  
EATON BRAY  
9.30am  
THURS & SAT  
AND  
BREWERS HILL  
DUNSTABLE  
7.45pm  
MON & WED**

**01525 715208  
angelajazzercise  
@gmail.com**

# REVIVE HOLISTIC THERAPY

Holistic therapies are concerned with treatment through massage, manipulation and relaxation. They are not only treatments for one physical ailment or one part of the body, but also treat the person as a whole.

Ideal for today's stressful lifestyles.

Treatments include:

- Aromatherapy Massage
- Indian Head Massage
- Hot Stone Massage
- Reflexology
- Reiki

Vouchers are available for any treatment, so why not treat a loved one or friend as well as yourself.

Edlesborough based. For more information or to book an appointment call  
Kate Meredith IIHHT, RGN, on **01525 221380**



*HPC Registered  
CHIROPODIST & PODIATRIST*



*For visits in your home  
Phone: 07981 749038*

*(Also Central Luton surgery - open 6 days)*

*Stuart Ball  
Ceramic Tiler  
Specialist  
at all aspects of  
Wall & Floor Tiling  
Over 32 yrs Experience  
01525 229381*



## Stephen D. Janes

*(Established in 1982)*

**CARPENTRY, JOINERY  
KITCHENS FITTED  
PROPERTY MAINTENANCE  
TELEPHONE: 01525 220649**

**G & J Groundwork  
Ring Garry**  
**01582 477568**  
**07949 118011**

**Fencing Panels • Blockpaving • Paths  
Shingle Drives • Slabs • Paving  
Steps • Gardenwalls • New Patios  
Relaying • Soak Aways • Drainage  
Free estimates or advice • References  
[www.gandjgroundwork.co.uk](http://www.gandjgroundwork.co.uk)**

## Neil Hodson Associates

*BUILDING DESIGN  
STRUCTURAL ENGINEERING*

**PROFESSIONAL BUILDING DESIGN,  
ADVISORY AND DRAWING SERVICES**

From plans for domestic extensions  
to multi-storey offices, commercial  
buildings and factories.

Structural surveys, site surveying,  
advice on building defects and  
Feasibility Studies

Planning Applications and Building  
Regulation Consents obtained.

**24 HIGH ST TRING  
Tel 01442 890894 OR  
Edlesborough 222462**



At Ian Waldron Photography we strive to capture images that are both relaxed and natural. We do this with little fuss or intrusion so you can enjoy one of the most special days of your lives! This is also true of our portraits which are all done on location which captures you and your family perfectly.

**Ian Waldron**  
naturally relaxed photography

[www.ianwaldronphotography.com](http://www.ianwaldronphotography.com)  
01525 221479  
Your Village Photographer

# Boo at the Zoo

SATURDAY 24 OCTOBER – SUNDAY 1  
NOVEMBER 2015

For Halloween fun and games that are truly hairy this October half-term, families should head to ZSL Whipsnade Zoo for its fur-filled, fiendish activity week, **Boo at the Zoo**.



From Saturday 24 October to Sunday 1 November, Zoo visitors can get creative, by carving their own **Petrifying Pumpkins** or heading to **The Bat Cave** to make glow-in-the-dark masks.

Families can jump aboard ZSL Whipsnade Zoo's steam train for the **Jumbo Express Ghost Hunt**, which invites courageous children to find the eight naughty ghosts hiding around the Zoo who have each stolen an item from the zookeeper's cupboard.

Intrepid zoo explorers can take a break to listen to the Zoo's enchanting **Spooky Stories**, as well as a whole host of **Terrifying Talks** about the Zoo's most fascinating animals.

Those who really want to get into the spirit of Halloween should be sure to attend **Ghoul School**, where they can transform themselves into their favourite creepy character, learn how to concoct a spooky spell and compete to wrap the best mummy. Creepy costumes are also encouraged at the **Pumpkin Party's** devilish disco – a must for any little monster who wants to mash!

**Boo at the Zoo** is dead set to be an eerily entertaining day out.

**Boo at the Zoo runs from Saturday 24 October to Sunday 1 November 2015 at ZSL Whipsnade Zoo.** Normal entry charges to ZSL Whipsnade Zoo apply. Extra charges may apply for some activities.

By kind permission of Josef Weinberger  
**FRONT ROW PRESENTS**

**MURDERED  
to DEATH**

by Peter Gordon

**Thursday - Saturday, 15-17 October 2015**  
**7.30pm, Eaton Bray Hall**

Come and enjoy an evening with your local  
theatre group, Front Row, as they visit  
Bagshot Hall for the weekend...

Licenced bar from 7.00pm



**Tickets £7.00 Box Office: 01525 222283 Open now!**

Market your home with us and receive an exclusive **free microsite** for your property to be shared across your chosen social networks.



Visit **mandmproperties.tv** to find out more.  
The only Estate Agent in Leighton Buzzard to offer this unique and unrivalled service.  
**Call us for more details**

Tel: 01525 377733 | [mandmproperties.co.uk](http://mandmproperties.co.uk) | [mandmproperties.tv](http://mandmproperties.tv)



## Live a healthy & active life

Free 10 minute advice chats with our Chartered Physiotherapists & HCPC Registered Podiatrists

PHYSIOTHERAPY  
PODIATRY &  
CHIROPODY  
PILATES  
ACUPUNCTURE  
SPORTS INJURIES  
MASSAGE  
WOMEN'S HEALTH  
& PREGNANCY  
CARE

**St. Judes**  
physiotherapy, health and well being  
**01525 377751**   
[enquiries@stjudesclinic.com](mailto:enquiries@stjudesclinic.com)  
[www.stjudesclinic.com](http://www.stjudesclinic.com)

# J Able bathrooms

**New Showroom NOW Open in Edlesborough**

### DESIGN

Free CAD design of your bathroom, This will give you a photo realistic finished plan of your design.

### SUPPLY

Come and browse our display suites, This will help you decide on the perfect bathroom for your needs.

### INSTALLATION

Our installations are of the highest standards!  
We take pride in making you delighted with the finished result.

We have suites in a wide range of styles to suit your budget.  
Drop in or ring to make an evening appointment at the showroom  
or a home visit at your convenience.

#### Opening Times

Monday. 9am-5pm  
Tuesday. 9am-1pm  
Wednesday. Closed  
Thursday. 9am-1pm  
Friday. 9am-5pm  
Saturday. 9am-1pm  
Sunday. Closed

**T: 01525 220043 M: 07891 449077**

3 Summerleys, Edlesborough, Buckinghamshire, LU6 2HR  
W: [www.jablebathrooms.co.uk](http://www.jablebathrooms.co.uk) E: [ableplumbing@hotmail.co.uk](mailto:ableplumbing@hotmail.co.uk)

# fancy a break?



LUXURY 3 BED, 2 BATH APARTMENT APPROX 1 MILE FROM CENTRE OF PUERTO BANUS MARINA, SPAIN. 45 MINS EASY DRIVING FROM MALAGA AIRPORT.

ALL MOD CONS INCLUDING AIR-CON, SAT TV, FULLY EQUIPPED KITCHEN, SWIMMING POOLS, EXCELLENT CLUBHOUSE & TENNIS COURTS.

MANY GOLF COURSES AND ALL WEATHER BOWLING GREENS NEARBY. CLIMATE IDEAL FOR HOLIDAYS THROUGHOUT THE YEAR. RATES £350 - £750.

CALL PETER OR CELIA ON 01525 220173 OR VISIT OUR WEBSITE AT WWW.479LOSANARANJOS.CO.UK.

# Plumm

PROPERTY

*'A fresh approach to selling property' ...*

**IN AND AROUND YOUR VILLAGE**

**Phone now for a free, no obligation, Valuation of your Property**

**01296 660230**

**01442 863737**

**www.plummproperty.co.uk**

## Absolutely Plastered

**DOMESTIC/COMMERCIAL,  
CLEAN AND RELIABLE SERVICE,  
FREE ESTIMATES, FRIENDLY ADVICE**



- \* Plastering & Coving
- \* Floor Screeding
- \* Pebbledashing & Rendering
- \* Dry Lining
- \* Cornices & Mouldings
- \* Insurance Work Undertaken

**CALL NICK CONWAY ON**

**Mobile: 07751 830716**

**Tel: 01296 688981**

**6 Cotes Way, Wing, LU7 0RB**

*Established over 20 Years*

## Duncan Tomblin

### TREE SURGEON

**Forestry Contractor • Tree Felling  
Crown Reduction & Thinnings  
Deadwooding • Hedge Cutting  
Stump Grinding • Site Clearance  
Private Agriculture Fencing Contractor  
Chipper & Stump Grinding Hire  
Digger Hire**

**FULL PUBLIC LIABILITY INSURANCE  
FREE ESTIMATES**

*'The Best Choice For Your Tree'*

**TEL: (01525) 221946**

**MOBILE: (07802) 410728**

**12 Greenways, Eaton Bray, Beds**

# Photos

*Right: Janet on The Green allotments the day before the (wet) open day! by John Hockey*



*Left: Celebrating 100 years of WI*



*Right: Flower festival at Dunstable Priory in aid of 100 years of WI*



**THE BEDFORDSHIRE AREA GROUP  
OF THE ASSOCIATION OF 16MM  
NARROW GAUGE MODELLERS  
PRESENTS**

## **STEAM IN BEDS "2015"**

**THE SHOW JUST GOT BIGGER AND BETTER  
LARGE SCALE NARROW GAUGE  
MODEL RAILWAY SHOW  
FEATURING NARROW GAUGE  
LAYOUTS RUNNING 16MM LIVE  
STEAM LOCOMOTIVES. TRADE  
SUPPORT FROM SPECIALIST  
SUPPLIERS**

**SATURDAY 28 NOVEMBER  
10.00AM TO 4.30PM - ADULTS £5.00  
ACCOMPANIED CHILDREN UNDER 16 FREE  
VENUE**

**EATON BRAY VILLAGE HALL  
INCLUDING PART OF ST MARY'S  
CHURCH, EATON BRAY,  
REFRESHMENTS AVAILABLE  
FOR FULL DETAILS SEE OUR WEB SITE:  
[WWW.BAG16MM.ORG.UK](http://WWW.BAG16MM.ORG.UK)**

invites you to

Eaton Bray  
Methodist  
Church

## **Café Community**

*Saturday October 10th*

*11.00am to 1.00pm*

*Relax & chat with friends,  
coffee/light lunch*

*Charity of the month:  
Medical Aid for Palestinians*

*All ages welcome (inc. activity area).*



# **Christmas Carol Concert**

## **Sunday 29 November 2015**

**at the Village Hall, Eaton Bray**

### **4pm**

**Tickets £1 for adults. Children are free**

**Available from Hilary Chadwick (Envoy)**

**Tel: 07932 057490; 01525 222087**

**Email: [hilary.chadwick@salvationarmy.org.uk](mailto:hilary.chadwick@salvationarmy.org.uk)**

**A collection will be taken for Keech Hospice Care (Children's Hospice)**



The Salvation Army, Eaton Bray Corps, Booth Place, Eaton Bray, LU6 2DR

A Church & Registered Charity no. 259322

Local Church: Envoy Hilary Chadwick, The Salvation Army, Eaton Bray Corps, Booth Place, LU6 2DR;

Telephone: 01525 222087; 07932 057490; Email: [hilary.chadwick@salvationarmy.org.uk](mailto:hilary.chadwick@salvationarmy.org.uk)





**Welcome to  
Eaton Bray Academy**

Telephone: 01525 220468  
Email: [admin@eba.ec](mailto:admin@eba.ec)

*A wonderful place to be*





# Patricia

Mobile Beauty Therapist

Massage & Beauty Treatments

01525 237781

07866 126510

Fully Accredited & Insured



## McTimoney CHIROPRACTIC



Margie Craib BSc BHSI DC AMC MMCA  
Human and Animal Treatments

Ashridge Farm, Ringshall, Berkhamsted, Herts HP4 1ND  
Telephone: (01442) 842729

General Chiropractic Council Registration No. 293



Virtual administrative  
support to businesses &  
private individuals

Website hosting

Domain registration

Desktop publishing

# 01525 229695

Email:

[enquiries@morenassociates.co.uk](mailto:enquiries@morenassociates.co.uk)

[www.morenassociates.co.uk](http://www.morenassociates.co.uk)

## ADRIENNE'S PRIVATE HIRE

Call for a FREE quotation  
Book early to avoid disappointment  
Very competitive prices

Airport Transfers  
& Private Hire

07980 039715

Our executive Cars, 6 seater Minibuses and  
lady driver are all available



## J.G.S. Metalwork & Son

Specialists in Gates  
& Gate Automation

Access Control • Security Grilles • Railings  
Balconies • Stairwells

[www.jgsmetalwork.co.uk](http://www.jgsmetalwork.co.uk)

Call in to discuss your ideas

High Street, Edlesborough LU6 2HS

Tel: 01525 220360 Fax: 01525 222786

## GRASS ROOTS GARDEN MAINTENANCE

TREE SURGERY, HEDGE PRUNING,  
SELECTION SUPPLY AND PLANTING OF  
TREES, SHRUBS AND HEDGES.  
REGULAR MAINTENANCE/ONE-OFF JOBS  
(Fully Insured)

Brian McMahon NCH (Arb)

01525 221960



## Edlesborough Flowers

Flowers, Gifts, Jewellery  
& More...

2 High Street,  
Edlesborough,  
LU6 2HS

Tel: 01525 221920

It's back!

# The Great Edlesborough Fun Run 2015



Cakes & Refreshments ■ Amazing Raffle ■ Medals

Sunday 11<sup>th</sup> October

10.30am Edlesborough Green

Adults £10 ■ Children £5 ■ Family tickets available



It's back for the second time, our family friendly fun run is returning in the autumn. Join us on our 5k run around the village, a nice, easy route that is suitable for all ages, levels of fitness and abilities. It is untimed and everyone is welcome to participate. Raising much needed funds for ECSC (Edlesborough Community Sports Club) in aid of our new sports pavilion. Strictly 75 runners, get in touch now for your application form as places will book up fast!

To receive your application form, please email us at [edlesboroughrunners@hotmail.com](mailto:edlesboroughrunners@hotmail.com)

Please contact 07747 618825 for any further details.

Follow all the news and updates on Facebook

@Edlesborough Runners

**ECSC**

Charity No. 1160939



Music at St Mary's

# POPPY PROM

7 NOVEMBER, 7:30pm

St Mary's, Eaton Bray

A celebration of 'Remembrance' and  
'The Last Night of the Proms'



**Box Office:**

**01525 222283**

Tickets will go fast so hurry  
to book your seats!

## Dagnall Community Choir

**IN CONCERT**

AT  
EATON BRAY VILLAGE HALL

ON  
SATURDAY 24th OCTOBER

AT 7.30pm

TICKETS ARE AVAILABLE FROM THE BOX OFFICE

TEL: 01525 220189

MEMBERS OF THE CHOIR OR ON THE DOOR

**Ticket price £8.00\***

\*INCLUDES A COMPLIMENTARY GLASS OF WINE OR SOFT DRINK

DO COME AND ENJOY AN EVENING OF POPULAR MUSIC  
PRESENTED BY YOUR LOCAL COMMUNITY CHOIR

## Brass Band Instrument Players Wanted!



The Salvation Army in Eaton Bray is to hold a Community Carol Concert  
in Eaton Bray Village Hall on Sunday 29 November. It is hoped that a

### Community Brass Band

can be formed to take part in this concert.

The initial performance will probably be quite simple and not overly demanding but our  
hope is that the band will develop and become a regular feature in the community. No  
religious connections are required. Everyone welcome whatever age or ability.

Before a practice time can be arranged names of those interested *need to be gathered*.

A few instruments are available to be loaned to those who can play but do not have their  
own instruments

If you are interested please contact:

Brian Knightley on 01582 514729; [brianknightley@hotmail.co.uk](mailto:brianknightley@hotmail.co.uk) or

Hilary Chadwick (Envoy) on 07932 057490; 01582 222087;

[hilary.chadwick@salvationarmy.org.uk](mailto:hilary.chadwick@salvationarmy.org.uk)

# ILLUSTRIA

## Kennels & Kathotel

Offering your pet a fully licensed Dog and Cat boarding service.

Purpose built Dog kennels

Individual Cat chalets with outdoor exercise runs

All in pleasant country surroundings

**01582 ~ 665343**



ILLUSTRIA  
Springfield Road  
Wellhead  
NR Dunstable Beds  
LU6 2JT



Proprietors

*Mick, Denise and Michele Garrod*



## The Gentleman Gardener

Let your local RHS qualified gardener make your garden beautiful, from simple garden maintenance to total redesign of your garden.

Please call Barry on  
**01525-222451 or  
07541196384**

to pop round for a free chat.

## N.D.S.

**General Building & Plumbing**  
(25 years experience)

- Roofing; Installer of UPVC guttering, soffits & fascia boards
- Kitchens & Bathrooms fitted
- Property Maintenance
- Fencing • Patios & Block Paving
- Gazebos • Garden Structures

**Tel: 01525 221470**

**Mobile: 07946 626564**

**FREE ESTIMATES**

...

**ALL WORK CONSIDERED  
NO JOB TOO SMALL**

For a top quality  
decorating job call

# Marc Flack

**01525 223166**

Trading locally for 10 years  
References are available

Make your house a home with blinds and awnings from

**VANSAR  
BLINDS**



[www.vansarblinds.co.uk](http://www.vansarblinds.co.uk)



- Free No Obligation Measuring And Quotations
- All Blinds Made To Measure
- Choose In The Comfort Of Your Own Home Or Workplace
- Family Run Business
- Large Range Of Quality, Affordable Fabrics And Colours To Choose From



Call: 01525 220477 or 01582 699565 E: [sales@vansarblinds.co.uk](mailto:sales@vansarblinds.co.uk)

### Financially Prudent (IFA) Ltd

23 The Green, Edlesborough, LU6 2JF

Your local IFA for impartial Personal or Corporate advice on:

- Mortgages
- Pensions & Annuities
- Insurance
- Savings & Investments

Call Paul Pearce on 01525 220480 or email [paul@finpru.com](mailto:paul@finpru.com) for a no obligation initial discussion



Financially Prudent (IFA) Ltd is authorised and regulated by the Financial Conduct Authority



### Established Village Dog Grooming Service

Professional and Affordable  
Large breeds welcome  
Trained in Hand Stripping  
Nails, Ears and Glands included

Contact Ulrika Tel 01525 211592  
5 Mill Road, Stanbridge, Beds. LU7 9HX  
[www.abfabgrooming.co.uk](http://www.abfabgrooming.co.uk)

### Spinney Landscapes & Gardening Services

*All Aspects of Grounds Maintenance*

Weed Control • Driveways & Patios  
Lawn Care & Scarifying • Fencing  
Turving • Tree Work  
Snow Cleaning & Gritting

Tel: 01582 872084 Mob: 07876 500292  
Email: [chambo.1628@btinternet.com](mailto:chambo.1628@btinternet.com)

# New Extension for St. Mary's

During the weekend celebrations of the Patronal Festival at St. Mary's Church Eaton Bray, Central Bedfordshire MP Andrew Selous and Vicar the Revd. Coralie McCluskey made a start on digging the foundations for the church extension.

Work to provide toilet facilities and a kitchenette will begin in earnest shortly. This will enable the church to be used by the villagers for many more activities. Some of the cost of £150,000 has been covered by grants but the church community is committed to raising the balance as quickly as possible so that further roof repairs can be carried out in the future.

The PCC and fundraising teams would like to thank everyone who contributed to the weekend's activities either by helping or by coming along to support, from Friday's concert by Fiona Harrison to Sunday evening's Songs of Praise service. There was also a lively Messy Church led by the Great Gardini who entertained with a Magic Show and Circus Skills.



## singalong with Helen

40 minutes of musical fun with instruments and puppets  
(Term time only)

- Monday - 10.30 @ Pitstone
- Tuesday - 10.00 @ Cheddington
- Wednesday 10.00@ The Hub, Ivinghoe
- Wednesday - 13.30 @ Pitstone
- Thursday - 10.00 @ Pitstone
- Friday - 10.00 @ Pitstone

Call me on 01296 661791 to reserve a place or ask about Singalong parties  
0-5 year olds £3.75  
siblings 2+ only £2  
siblings under 2 - free  
free tea, coffee, juice and biscuits

Kumon's **maths and English** study programmes are tailored to your child's individual needs, nurturing their independence and enthusiasm for learning.

To unlock your child's potential, contact your local instructor for a Free Assessment.

**Tring Study Centre**  
Louise Ogelman **01525 378 840**

Develop your child's independence

**KUMON** [kumon.co.uk](http://kumon.co.uk)

BEAVERS+ CUBS+ SCOUTS+

A few hours of your time  
can make years of  
difference...

1<sup>st</sup> Totternhoe Scout Group  
is looking for adult  
volunteers to help with:

- Cub Pack Nights  
(Wednesday and Thursdays in  
term time)
- Admin support

Contact:  
Becky  
Group Scout Leader

[totternhoescouts@gmail.com](mailto:totternhoescouts@gmail.com)

Or 07598330636



REBECCA GARRARD BMUS (HONS)

## MUSIC TUITION



- Experienced Piano,  
Violin and Clarinet  
teacher
- Saturday lessons now  
available
- All ages and skill levels  
welcome



TEL: 07747 595152

EMAIL: [rebecca.2.garrard@gmail.com](mailto:rebecca.2.garrard@gmail.com)

*Stanbridge Logs*

SEASONED  
HARDWOOD

LOGS

CONTACT  
07835175402  
OR  
[stanbridgelogs@gmail.com](mailto:stanbridgelogs@gmail.com)

*Stanbridge Logs*



## VINTAGE COFFEE MORNING

Saturday, October 3<sup>RD</sup>  
10 am – 12 noon

St Mary's Church, Eaton Bray

Vintage jewellery  
([www.dottiedarling.co.uk](http://www.dottiedarling.co.uk))  
Raffle, Bring and Buy,  
Book Stall



# S M Reilly & Son Ltd

## General Builders & Contractors



Turning Your House into  
a Home Since 1987

*All aspects of the building  
trade undertaken*

- \*Extensions\*Hard Landscaping\*
- \*Windows, Doors & Conservatories\*
- \*Fitting of Aluminium Bi-fold Doors\*
- \*Kitchen & Bathrooms\*Drives\*
- \*Loft Conversions\*

**01525 221740**  
**07970 637511**

**ALAN BOULT**  
(Light Haulage)



- TRANSPORT ● COLLECTION
- DELIVERY SERVICE
- SINGLE TO MULTIPLE ITEMS
- REGULAR CONTRACTS WELCOME

**Tel: 01296 427182**

**Mobile: 07770 237745**

Email: [boulton586@btinternet.com](mailto:boulton586@btinternet.com)

**A McClelland**  
**Pest Control**



**FOR FAST RESPONSE CALL:**  
**mobile 0777 494 8415 or office 01582 872158**

*specialists in: wasps - bees - ants - hornets*  
*fleas - cockroaches - bed bugs - pigeons - magpies*  
*rabbits - rats - mice - moles - squirrels - foxes - mink - feral cats*

**UNMARKED VEHICLES**

For further information please call  
or email [a.mcclelland\\_pestcontrol@hotmail.co.uk](mailto:a.mcclelland_pestcontrol@hotmail.co.uk)



**Tel: 01525 221847**  
**sales@act.uk.com**





**GENERALMECHANICALSERVICESLTD**

VEHICLE SERVICING AND REPAIRS



**MOTs • MOT REPAIRS • SERVICING  
DIAGNOSTICS • TRACKING • AIR CONDITIONING  
TYRES • CAMBELTS • COLLECTION & DELIVERY  
WELDING & FABRICATION • BATTERIES**

**All vehicles - all mechanical work!**

**1 HONEYWICK LANE, EATON BRAY, LU6 2BJ**

**reception@general-mechanical-services.co.uk**

**www.general-mechanical-services.co.uk**



**01525 222876**



**TEL: 01582 667924**



13185

**"Good reputations take years to build"**

***GRAHAME PRATT***

**Plumbing & Heating Engineers**

**Plumbing & Heating  
Bath & Shower Room Design and Installation  
Ceramic Floor & Wall Tiling  
Kitchen Installation  
Small Building Works**

**www.grahameprattplumbing.co.uk**

**Email - [enquire@grahameprattplumbing.co.uk](mailto:enquire@grahameprattplumbing.co.uk)**

# NG AUTOS



MAKING YOU AND YOUR CAR HAPPY

CAM BELTS • MOT'S • MOT REPAIRS • HEAD GASKETS  
AIR CONDITIONING • RECOVERY/BREAKDOWN  
DIAGNOSTICS SERVICING • BRAKES • SUSPENSION  
CLUTCHES • GEARBOXES • TYRES • WHEEL BALANCING  
WHEEL ALIGNMENT COLLECTION & DELIVERY

**CALL NICK OR GARY**

**01525 220850 OR 07972 198615**

**SPARROW HALL FARM, LEIGHTON ROAD,  
EDLESBOROUGH LU6 2ES**



Reception



Service Bays



MOT Station



## Dunstable Lock & Safe Co

Locksmiths & Safe Engineers  
A local family run business for over 30 years

### Special Offer

5 Lever Insurance rated mortice  
deadlock, supplied & fitted  
Only £99.00 inc VAT

- Anti snap cylinders
- UPVC door & window locks
- Safes supplied & fitted
- Master key cutters
- Safes opened & repaired
- All locks supplied & fitted



Be one step ahead of the burglars and call us  
today to discuss your security needs however  
big or small

89 High Street South  
Dunstable  
Beds, LU6 3SF

Tel: 01582 696108  
[www.Dunstablelockandsafe.com](http://www.Dunstablelockandsafe.com)

**Made to order  
garden furniture & ornaments**

Call John on: **0789 506 8251**



**Makes an ideal gift  
for any occasion**



David Brown

## Window Cleaning

Quality Reliable Service.

Regular, Occasional or  
Single Visits.

Friendly Free Estimates.

Facias, Guttering & Conservatories.

External Cleaning & Maintenance.

Fully Insured.

**Phone 01582 472113**

**Mobile 07534 837073**

# D & E HINES

## High-Class Butchers

Quality Beef, Pork & Lamb

Grade A Poultry

BBQ & Sausage Speciality

*Renowned for 'Bunkers Sausages'*

**Telephone: 01525 220413**

**98 High Street, Eaton Bray**

## Eaton Bray Village Hall



- ❖ Equipped to support theatrical productions and film shows
- ❖ Large car park
- ❖ Large Kitchen with a six ring cooker, large refrigerator, hot trolley, crockery etc.
- ❖ 3 separate areas to hire to meet your needs and budget
- ❖ For more information and brochure please ring Norman on 07975 797202

- ❖ Superb venue for weddings
- ❖ Fantastic place for parties and dances
- ❖ A must for children's parties, can fit the bouncy castle inside if weather dictates!!!
- ❖ Keep fit groups
- ❖ Ideal for Club meetings or functions



# Dagnall School



**A Buckinghamshire co-educational school**

**For 4-7 year olds**



Dagnall School offers small class sizes, an exciting curriculum, excellent care and support and good links with the local community



Ofsted 2011  
"Pupils are confident,  
very happy at school  
and curious to learn."



Tel: 01442 842473



[www.dagnall.bucks.sch.uk](http://www.dagnall.bucks.sch.uk)

E-mail: [office@dagnall.bucks.sch.uk](mailto:office@dagnall.bucks.sch.uk)

## G.N.C Wall & Floor Tiling

Covering all aspects of tiling from  
Natural Stone & Porcelain to ceramics



[gnctiling@hotmail.com](mailto:gnctiling@hotmail.com)

Providing assurance & attendance through to  
completion of works

For a free full & comprehensive quotation  
please call Colin Bell

---

07725 033017

01525 222094

## D.A. Windows Doors & Conservatories

23 Church Lane, Eaton Bray, LU6 2 DJ

Tel: 01525 221051 Mobile: 07801 798387

email: [mimcavinder@hotmail.com](mailto:mimcavinder@hotmail.com)

AUTHORISED  
SWISH INSTALLER  
WITH OVER 20  
YEARS  
EXPERIENCE

Installation of PVCu windows, doors and conservatories  
Replacement glass units and window maintenance

QUALITY PRODUCTS - QUALITY WORKMANSHIP -  
REASONABLE PRICES



General building  
maintenance work  
also undertaken  
including:  
Fascias and Soffits  
Gutters  
Fencing

Accredited Member of the  
Incorporation of Plastic  
Window Fabricators and  
Installers Limited



# PLUMBING AND HEATING

FOR ALL YOUR PLUMBING, HEATING AND GAS  
REQUIREMENTS

NOSSITER AND BARNETT LIMITED  
PLUMBING AND HEATING

CONTACT MATT OR JAMIE  
TEL 01525 229524 MOB 07802 270427





## MJ Security Systems

Contact Us For More Information

Unit 4, Arianne Business Centre,  
Blackburn Road,  
Townsend Industrial Estate,  
Houghton Regis,  
Bedfordshire,  
LU5 5DZ

Please call for a free quotation

**T: 0800 0856126**

**E: [info@mjsecurity.co.uk](mailto:info@mjsecurity.co.uk)**

**W: [www.mjsecurity.co.uk](http://www.mjsecurity.co.uk)**

# Protecting what's important

## MJ Security Systems Ltd



**FROM ONLY  
£439.95+VAT  
Products and  
Installation**

**Kit includes:**  
1 x Wireless Door Contact, 2 x Wireless  
P.I.R., 1 x Wireless Sounder, 2 x Remote Set  
and Unset Fobs.

**Stylish • Wireless • Secure**

**We also specialise in:**

- IP Cameras
- Intruder Alarms
- Access Control
- CCTV & Monitoring
- Door Entry
- Covert Cameras
- Security Lighting

# M . P . S

Maintenance & Property Services

- KITCHENS AND BATHROOMS
- PAINTING AND DECORATING
- PROPERTY RENOVATIONS
- PLASTERBOARDING
- FENCING

FREE ESTIMATES  
NO CALL OUT CHARGE  
NO JOB TO SMALL  
LOCAL

Contact:- Julian

**07958 306301**

E-mail – [mps@mustoe.co.uk](mailto:mps@mustoe.co.uk)  
[www.mustoe.co.uk](http://www.mustoe.co.uk)

# Leighton Aerials

Established 1970

**For all your aerial and  
satellite needs call Colin  
on 01525 374742**



# Edlesborough School & Pre-School



*Pupils' behaviour is outstanding...*

*The environment for learning is exciting and stimulating...*

*A real strength of the school is pupils' attitude to their learning .*

*Ofsted 2013*

For more information about our School, Pre-School and Before and After School facilities, visit our website at [www.edlesborough.bucks.sch.uk](http://www.edlesborough.bucks.sch.uk)

Please contact the school on 01525 220431 to arrange a visit.

# CHIMNEY SWEEP

Local & Est. Brush n Vac  
Friendly, Clean and Efficient

Call **KEVIN HING** on

Tel: 01525 371592

Mob: 07940 528897

[www.khing.co.uk](http://www.khing.co.uk)

Member of NACS

**eww**

E W Wallace & Co  
Chartered Accountants  
Tax Consultants  
Business Advisors

Small business specialists serving  
Beds, Bucks & Herts

- Annual accounts
- Tax returns
- Self-employed
- Limited companies
- Small business specialist
- Sage Accounts expertise
- Prompt, personal service
- Value-for-money fees
- Free initial consultation



**JAMES FALCON-CROSS**

## LANDSCAPING AND OUTDOOR LIVING DESIGN



**ALL ASPECTS OF LANDSCAPING  
UNDERTAKEN INCLUDING  
FENCING, TURFING AND PATIOS  
TIMBER STRUCTURES  
DESIGNED AND BUILT**

**VEGETABLE AND HERB GARDENS**

**01442 843258 / 07769 901325**

**ONECROSSFALCON@GMAIL.COM**

**01525 220826**

[www.ewwallace.co.uk](http://www.ewwallace.co.uk)



# Beau

HAIR AND BEAUTY SALON

- Unisex hair salon
- Hair Extensions
- Nail Bar
- Wedding, Prom Hair Styling
- Express Eyelash
- Girls Glamour Parties
- Accessories
- Loyalty Cards

**01525 220926**

*3 Summerleys, Edlesborough LU6 2HR*

For lots more offers and news about what is happening follow  
and like us on  Beau Hair & Beauty  @beausalon

CND   
Shellac™

KOLESTON  
PERFECT

O·P·I

Beauty  
Works  
CELEBRITY  
CHOICE

ghd



Home or Business  
IT Support



Visit Our Website at [www.hobit.co.uk](http://www.hobit.co.uk)

Laptop Repair • Virus Removal • Data Recovery  
Laptop Screen Replacement • Data Transfer  
Wired & Wireless Networks • Broadband Setup  
Backup Solutions • Printing Problems  
Tune Ups • 1:1 Training • Email Problems  
Ipad & Iphone Connectivity Issues  
Computer Upgrades • Free advice

Call now 01525 378127 or 07702 80 70 90

RELIABLE - PROFESSIONAL - LOCAL

## James B Chadburn FBHI Fine Antique clocks & Barometers

Specialist in repairs & restorations.

Valuations & clock finding service.

Advice & assistance on formation & disposal of private clock collections.

Quality clocks/barometers Bought & sold.



Telephone 01525 221165

Mobile 07790 000629

E-mail: [info@jameschadburn.com](mailto:info@jameschadburn.com)

## Reiki Therapy

Reiki means universal energy. It is a relaxing, calming therapy that calls on your own bodies natural healing properties. It is possible for Reiki to help with physical symptoms, emotional issues and spiritual growth.



Session is £30 per hour

Contact Nicola (Reiki level 2)

Mob 07941799772

01525837018

Bower Lane Eaton Bray

## T. COBB

PLASTERING  
FLOOR SCREEDING  
PLASTER MOULDINGS  
CEMENT CORNICES  
RENDERING

GENERAL BUILDING & ALTERATIONS

TEL: 01525 792698 MOB: 07772 231348

Wagging Wonderful  
Dog Grooming  
Here to take care of your mucky pup!

- Your local grooming service in Eaton Bray!
- 1-2-1 care for your dog
- NO cages!

Telephone: 07580 343 396

Website: [waggingwonderful.weebly.com](http://waggingwonderful.weebly.com)  
Email: [waggingwonderful@yahoo.co.uk](mailto:waggingwonderful@yahoo.co.uk)



## Harmony Plus Hair & Beauty Clinic

### Bridal Packages Available

We offer a range of treatments:

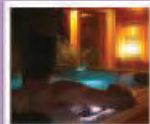
- 3D Lipo Fat Reduction
- Teeth Whitening
- Caci Non-Surgical Face Lift
- Crystal Clear Microdermabrasion
- Extreme Lashes and LVL's Lashes
- HD Eyebrows
- Fake Bake Tanning
- Young Blood Make-up
- Manic Nails
- Bio Sculpture Gels
- Shellac Nails
- Hot Stone Massage
- Reiki

Call us today

## Harmony Retreat

**FREE SPA PLACE**  
in our cosy log cabin  
**FOR THE BRIDE ONLY**

if the Bride books her Spa Hen Party  
for 5 people or more at  
Harmony Retreat's Log Cabin  
when Hair & Makeup is booked  
with Harmony Plus Hair & Beauty Clinic



Harmony Plus Hair & Beauty Clinic  
6A Wallace Drive • LY6 2DS • Dunstable/Leighton Buzzard  
07852 145053 • [www.harmonybeautysanctuary.net](http://www.harmonybeautysanctuary.net)



## C H BUILDERS

1 Richmond Court  
Eaton Bray  
Dunstable  
LU6 2DY

[cwhawkes@tiscali.co.uk](mailto:cwhawkes@tiscali.co.uk)  
Tel: 01525 229558  
Mob: 07989 357231

Local builder with over 35  
years experience in the trade,  
specialising in:

- Kitchen fitting and alterations
- Extensions
- Loft conversions
- Renovations

Recommendations available

Please contact Chris to discuss  
any requirements for a free  
quotation

## LINSLADE PHYSIOTHERAPY & SPORTS INJURY CLINIC

47a Coniston Road Linslade  
Leighton Buzzard Beds LU7 2PJ



*Affordable effective treatment to ..*

- Relieve your neck & back pain
- Loosen your stiff joints
- Ease your arthritis
- Get you back in the game after a sports injury
- Help you recover from surgery

**Why Wait To Feel Better?**  
Ring for an appointment now  
**01525 853462**

E-mail: [pt4u@linsladephysiotherapy.co.uk](mailto:pt4u@linsladephysiotherapy.co.uk)

*(Ample free parking available)*

Nearly half of us suffer from some

form of back pain each year. National Back Care Awareness Week runs from 5 – 11 October and is a promotional campaign by BackCare, the charity for healthier backs.

St Judes Clinic in Leighton Buzzard, will be holding a free advice session on **Friday 9 October 10.30 am – 2.30 pm**. Practice Principal and Senior Physiotherapist at St Judes, Moira D'Arcy, will be offering free 10 minute advice chats, both in person and on the telephone, to anyone wanting some helpful advice on the prevention and management of back and neck pain. If you cannot attend on the 9th, you can call the clinic to arrange a more suitable time to speak with one of their other experienced Chartered Physiotherapists.

In the meantime, there are ways we can help ourselves:

- Think tall - you will naturally help yourself engage your core stability muscles that help protect your spine.
- At work - ensure your chair and desk

*\*\* If you are in pain, get £6.90 off an initial physiotherapy assessment booked 5 – 10 October when you quote this offer (Ts & Cs apply)\*\**

We have a great new programme of films for our eleventh season which started on Monday 14th September. We meet in Eaton Bray Hall at 2.0pm on the second Monday of each month between September and the following May. This season, members have chosen the following programme.

- The Theory of Everything
- Paddington Bear
- A Royal Night Out
- The Second Best Exotic Marigold Hotel
- The Imitation Game
- The Boy in the Striped Pyjamas

height is right for you and that the screen height and tilt is correct.

- In the car - your seat should be in a fairly upright position with good low back support. Consider buying a low back cushion for support. Ensure the head rest is correctly positioned to support the back of your head.
- At home - look at the depth of your sofa. If it is too deep for the length of your thighs or too low for you, then your hips will be lower than your knees when you sit, causing you to flex in your lower back.
- Sleeping - mattresses should give you enough support for your curves whilst keeping your spine straight. A mattress that is too hard or too soft is equally as bad.

For further advice contact St Judes Clinic: 01525 377751.



**St Judes Clinic,**  
**26 Lake Street**  
**Leighton Buzzard**  
**LU7 1RX**  
**☎ 01525 377751**

[www.stjudesclinic.com](http://www.stjudesclinic.com)  
[enquiries@stjudesclinic.com](mailto:enquiries@stjudesclinic.com)



Housewife 49  
Mr Turner  
Woman in Gold  
New members are always welcome and can be assured

of a warm welcome, if you think you might like to join us, you can come for a trial visit for £4 which will be deducted from your membership fee if you join us.

More information and a brochure can be obtained from Graham Chappell on 220883 or visit our website at: <http://www.eatonbray.com/cinema/> or, just come along to one of our films. It makes a nice afternoon out and we serve Tea and Biscuits after the film with time for a chat.



# Eaton Bray Parish Council

## Highlights of the Meeting Minutes of the Eaton Bray Parish Council Held on Monday 6th July 2015 from 7:30pm at the Coffee Tavern

### Central Beds Council (CBC)

Website: [www.centralbedfordshire.gov.uk](http://www.centralbedfordshire.gov.uk) -

Customer Services: 0300 300 8302 / Email: [customers@centralbedfordshire.gov.uk](mailto:customers@centralbedfordshire.gov.uk)

- Planning Application (Park Farm, Northall Road) CB/15/022260: The Parish Council (PC) responded to the EIA application. A copy of the PCs reply can be viewed on the Eaton Bray website/facebook pages. The PC asked Cllr. Janes to clarify the legal position with regarding to an EIA survey in relation to land size/development size, and whether PC have the right to insist a development of a certain size have an EIA carried out.
- Parish Lighting: Cllr. Janes confirmed that all the parish lighting is due to renewal, he is just waiting for a start date. The PC are also speaking direct to CBC direct regarding all the issues experienced in the parish regarding the lighting.

### Bedfordshire Police:

REPORTED CRIME – YEAR TO DATE		
Crime Type	RECORDED CRIME	
	01/06/14 to 30/06/14	01/06/15 to 30/06/15
Violence against the Person	3	3
Sexual Offences	0	1
Robbery	0	0
Domestic Burglary	1	3
Burglary Other	3	3
Vehicle Crime	0	1
Other Theft	3	2
Criminal Damage	0	4
Drugs	0	0
Other Notifiable Offences	0	0
<b>Total</b>	<b>10</b>	<b>17</b>

ASB INCIDENTS		
Anti-Social Behaviour	01/06/14 to 30/06/14	01/06/15 to 30/06/15
<b>Total</b>	<b>2</b>	<b>5</b>

### News from the team:

If you wish to contact your Local Policing

Team then please call 01582 473411 or email [LPT.LeightonBuzzardLinslade&Rural@bedfordshire.pnn.police.uk](mailto:LPT.LeightonBuzzardLinslade&Rural@bedfordshire.pnn.police.uk) . Non-emergency call 101 / All emergencies 999

### Speedwatch

Speedwatch are to be carrying out more

sessions in the near future. The team would like more volunteers to help with the speed checks. If you would like to get involved, please contact Cllr. Mark Tomkins, email [councillormarktomkins@gmail.com](mailto:councillormarktomkins@gmail.com) expressing your interest.

### Neighbourhood Plan

The application for Eaton Bray's Neighbourhood plan designation has gone out to consultation with CBC.

### Eaton Bray Parish Events

Ideas put forward to the PC (1) local fair (2) Farmer's Market. To be looked into further.

### Football Mini-Pitch School Lane

The PC considered the responses received and it was proposed that they will not authorise EB Lions having two mini-pitches on School Lane recreation ground. The PC have agreed to the use of The Rye and Holmans Field.

### Future Eaton Bray Parish Council Meeting Date

Monday 3rd October 2015 from 7:30pm at The Coffee Tavern (1st floor)

### Parish Council Website: [www.ebpc.co.uk](http://www.ebpc.co.uk)

For full detailed copy of the minutes for Eaton Bray Parish Council please visit the Parish Council website.

A hard copy of minutes can also be viewed on the Parish Council's notice board at The Coffee Tavern.

✉ Heidi Head, Parish Clerk & RFO

Email: [clerk@ebpc.co.uk](mailto:clerk@ebpc.co.uk)

Telephone/Fax: 01525 221464

Website: [www.ebpc.co.uk](http://www.ebpc.co.uk)

Office Hours: Tuesday/Thursday/Friday 09:30-13:30hrs [messages can be left on answerphone]

Follow Eaton Bray Parish Council on Facebook and Twitter

Keep up to date with what is going on in the parish

# The Wednesday Club

If you are older, and mainly at home,  
Do not be unhappy and stay there alone,  
Come to the Wednesday Club, it's very  
local, at Northhall,  
They'll make you most welcome, and it's  
open to all.

The Club has its own transport, our own  
Bus Driver will call,  
Right at your front door, he gives assistance  
to all,  
And takes you to the Club House, which is  
warm, comfortable, and bright,  
There you will find dedicated helpers, who  
will make sure all is quite right!

They have hot coffee or tea to greet your  
arrival,  
And a welcoming smile to haste your  
survival!  
Missed the bus today, that need not ruin  
your pleasure,  
If you have your own car, you can always  
arrive at your leisure.

You will soon make good friends with all  
members there,  
The moment you arrive there's a  
comfortable chair,  
"Do you play Cards, Dominoes, or  
Scrabble?" you may be asked.  
If you don't, it won't matter, although most  
of us did in days that are passed.

Lunch comes at twelve, and it's always  
Real Hot!  
With a savoury dish, and lots of vegetables,  
straight from the pot,  
Always a Sweet is included to complete  
this good meal,  
And there is always "Seconds", you have  
only to appeal!

After lunch, we play "Housey, Housey"  
which is always great fun,  
Especially when you find that one of your  
lines has just won,  
The prizes are useful, as you can choose  
from a tray,  
Of tinned food, or cakes, and take them  
home at the end of the day.

The Club closes at three o'clock, mid  
afternoon,  
With more tea and cakes, if your tummy  
has room!  
The bus is there to take all who need it  
home,  
Without this help, some from their doorstep  
would possibly be unable to roam.

So a big THANK YOU to all who make  
the Wednesday club such a success  
To our Chairman, to Anna, and her  
assistants, we all think it's one of the best,  
To the Ladies who cook, washer uppers,  
and helpers who undertake every task,  
And finally our drivers and conductors  
who see everyone to their home at the last!

✍Norman Davies Born Dec 1924 and an  
active member of the Wednesday Club



## Dunstable & District Local History Society

**Tuesday 13 October, 7.45pm**  
**The Mysterious Disappearance  
of Glenn Miller**

An aircraft carrying the famous American  
band leader vanished during the war after  
taking off from a base near Bedford. But  
is this the true story? Tony Eaton reveals  
some surprising evidence.

**Methodist Church Hall, Dunstable**  
**Visitors always welcome £2**

# 100 Years of the Women's Institute

The Women's Institute (WI), a community-based organisation for women, was founded in Stoney Creek, Ontario, Canada by Adelaide Hoodless in 1897. It then expanded to Britain, and later to other countries. Many WIs belong to the Associated Country Women of the World organization.

The British WI movement was formed in 1915 in Llanfairpwllgwyngyll, Anglesey Wales. It had two clear aims: to revitalise rural communities and to encourage women to become more involved in producing food during the First World War. Since then the organisation's aims have broadened and it is now the largest women's voluntary organisation in the UK. The organisation is celebrating its 100th anniversary this year and currently has approximately 208,000 members in 7,000 WIs.

Amongst WI aims and activities are providing women with educational opportunities and the chance to build new skills, enabling them to take part in a wide variety of activities, campaigning on issues that matter to them and their communities. Women's Institutes in England, Wales, Jersey, Guernsey and the Isle of Man are affiliated to the National Federation of Women's Institutes. In Scotland and Northern Ireland there are similar organisations tied to the WI through the Associated Country Women of the World: the Scottish Women's Rural Institutes and the Women's Institutes of Northern Ireland. The national headquarters of the UK WI, the National Federation of Women's Institutes (NFWI), is in London. There is also an office in Cardiff, NFWI-Wales, and a residential college in Oxfordshire, Denman College. The NFWI produces a membership magazine WI Life. WI Enterprises is the trading arm of the

organisation and exists to raise funds and provide benefits for members.

Every individual WI meets at least once a month and there is usually a speaker, demonstration or activity at every meeting for members to learn and develop a range of different skills.

Craft has always played an important role in the WI and thousands of members are involved in a range of different crafts across England and Wales.

The Women's Institute is often associated with food, cooking and healthy eating, and food and cooking form an important part of the WI's history.

The WI movement began at Stoney Creek, Ontario in Canada in 1897 when Adelaide Hoodless addressed a meeting for the wives of members of the Farmers' Institute. WIs quickly spread throughout Ontario and Canada, with 130 branches launched by 1905 in Ontario alone, and the groups flourish in their home province today. As of 2013, the Federated Women's Institutes of Ontario (FWIO) had more than 300 branches with more than 4,500 members.

The first WI meeting in Great Britain took place on 16 September 1915 at Llanfairpwll on Anglesey in Wales. The WI was originally set up in the UK to revitalise rural communities and to encourage women to become more involved in producing food during the First World War.

The WI today plays a unique role in enabling women to gain new skills, take part in wide-ranging activities and campaign on issues that matter to them and their communities. The WI is a diverse organisation open to all women, and there are now WIs in towns and cities as well as villages.

Women's Institutes were formed in Scotland and Northern Ireland independently of those in England and Wales. The first

Women's Rural Institute started in Scotland on 26 June 1917, and Madge Watt travelled up from London to speak to a meeting at Longniddry. After the end of the Great War, Watt returned to Canada where she continued as an activist for the interests of rural women. In 1930 she founded the Associated Country Women of the World (ACWW).

After the end of the First World War, the Board of Agriculture withdrew its sponsorship, although the Development Commission financially supported the work of the forming of new WIs and gave core funding to the NFWI until it could become financially independent. By 1926 the Women's Institutes were fully independent and rapidly became an essential part of rural life.

One of their features was an independence from political parties or institutions, or church or chapel, which encouraged activism by non-establishment women, which helps to explain why the WI has been extremely reluctant to support anything that can be construed as war work, despite their wartime formation. During the Second World War, they limited their contribution to such activities as looking after evacuees, and running the Government-sponsored Preservation Centres where volunteers canned or made jam of excess produce. All this produce was sent to depots to be added to the rations.

In 1948 NFWI bought Marcham Park in Berkshire and converted it into a short-stay residential adult education college, called Denman College in honour of Lady Gertrude Denman. Now referred to as Denman, it has grown and developed over the years and is a well-appointed adult education centre attended by approximately 6,000 students each year. It is open to non-members as well as members.

The WI Cookery School at Denman offers

a range of over 100 day schools, residential courses and family courses. The courses are tutored by specialists.

During the 1920s, many WIs started choirs and NFWI set up a music committee and appointed W.H. Leslie, an amateur musician from Llansantffraid, Shropshire, as an advisor.

Mr Leslie held a one-day school for village conductors in London in early 1924. He asked his friend Sir Walford Davies to write an arrangement of Hubert Parry's setting of Jerusalem, for WI choirs. This hymn with its association with the fight for women's suffrage was appropriate for the newly emerging WI movement which was encouraging women to take their part in public life, and to fight to improve the conditions of rural life.

This was so successful that it has been sung at the opening of NFWI AGMs to this day. Many WIs also open meetings by singing Jerusalem. Although it has never actually been adopted as the WI's official anthem, in practice it holds that position.

## **NORTHALL BAPTIST CHAPEL**

**Chapel Lane, Northall**

(just beyond the 30 speed limit signs on the road towards Leighton Buzzard)

Everyone is welcome to our Sunday worship each week between 11am and 12.30pm including tea/coffee and time to talk together.

For more information contact:

John Hazell 01525 218142

Email [northallchapel@btinternet.com](mailto:northallchapel@btinternet.com)

There has been a Baptist Chapel in Northall for more than 200 years. Today we continue to seek to worship God, serve him in our daily lives and support and encourage one another in the difficult and the joyful times.



# Eaton Bray Lawn Tennis Club

Time has moved on since May when our last article was published in Focus. Now with the imminent approach of our 27th Club Finals Day on Saturday 12th September it seemed an opportune time to put pen to paper / finger to keyboard & delve back into the past with the aid of a quarter century of diaries (I do detect a communal sigh of relief from most club members that E.B.L.T.C. was not formed back in 1968 but that story maybe can be left until Andy Cross re-enters the Focus scene) prior to coming right up to date with information regarding this year's finalists.

Our very first Finals Day occurred on Bank Holiday Monday August 28th 1989 ably organised by Ross Bagni – is there any limit to his attributes ? – The Men's singles title was contested between two founder members – we probably were all founder members at that time, the club having only been formed in 1987 – Mike Venn & Peter Hale. The youthful 42 year old securing victory. Our first ladies champion was Lisa Abercrombie who defeated her mum (a family affair well ahead of any Williams sister rivalry) in a 2 hour 3 set marathon. Mike & Judy Venn beat Mike & Val Abercrombie in the mixed doubles & Lisa & Val were lady partners defeating Judy Venn & Janet Hale in the ladies doubles final.

Longevity Rules O.K. insomuch as four of the above-mentioned remain active & mobile to this day (at least when Ross is not having a heart attack or being knocked over on court by players twice his size – apologies to Roy Cook for the slight exaggeration of his bulk) and in the ensuing years all four managed to get their names on one or more of the trophies. (Yes, even Ross, thanks to partnering Jenny Baines who holds the record for most ladies singles titles)

Mike Venn & Val Abercrombie, both no longer alive, remain very much in the thoughts of club members.

As the club grew & the annual tournament became much more competitive with the likes of Nick Boys & Michael Tatham participating, one name stood out above all others in the holding of silverware, Darren Kerins. 20 singles finals to date with 16 of them victorious. 7 men's doubles titles, the last admittedly won on the back of being the partner of Andy Cross and 6 mixed doubles titles. Impressive.

So, back to the present. Like most tournaments in local tennis clubs such as Dunstable, Flitwick, Edlesborough etc. getting participants to play their matches on time is an organiser's nightmare as our own David Hillman will testify. Thus with less than 4 days to go to finals day not all of our finalists are known.

Our coach Sara Leavy will contest the mixed final with Adam Bamford should they manage to beat David Hillman & Jenny Baines. Stephen Macintosh & Alison Lowe will be the opponents in the final.

In the men's doubles final Peter Messetter & Simon Mitchener – an engravers nightmare – will take on young Max Freebairn & not so young Darren Kerins who looked into the precipice of defeat prior to scaling the mountain of victory against Peter Hale & Roy Cook, champions of the last two years. Peter & Simon will be going for their fourth victory since 2002

With the considerable help of young Alison Lowe, who has made quite a name for herself in Bedfordshire tennis, Janet Hale has achieved the remarkable feat of reaching finals in the very first & the current year of Eaton Bray's existence. Hopefully both Sara Leavy & Kirsty Glynn will show respect for their elders & youngsters in the final.



David Provan, who has been a tower of strength in our club, has the unenviable task of trying to prevent Darren reaching yet another men's singles final. There awaiting one of them will be Dan Sunderland.

Will this year be the one when Dan takes home the cup?

Hopefully the answer to this & other questions, plus a roundup of both senior & junior performances in the South Bedfordshire Topspin Racquets Summer League, will appear in our next article.

✍️Peter Hale



## Edlesborough W.I.

Our two summer meetings were held in the Memorial Hall. The first took place on

14th July when our speaker, Mike Payne, spoke on the subject of 'The History of Pinewood Studios'.

Mike had no connections with the film industry except a grand passion for Pinewood Studios; which was evident throughout his lively and excellent talk. He began the evening by giving a brief history of Heatherden Hall, which was originally set within 100 acres of woodland, in Iver Heath, Buckinghamshire. The building is now a Grade 11-listed Victorian building and is famous for being the home of the founder of Pinewood Studios and consequently became the centre of the film business.

Heatherden Hall was built in 1891/2 and its fourth owner was Charles Boot, a Yorkshire man and builder, who made a fortune and loved films so much that he wanted to rival Hollywood, in England. Charles met a fellow Yorkshire businessman named Joseph Arthur Rank, who came from a humble background, the seventh of seven children and whose father was a miller. Joseph was also passionate about films. He made a name for himself originally by making Sunday school films on the Isle of Wight. From this alliance, Charles Boot's passion for England to rival Hollywood was able to materialise. Heatherden Hall became the centre of Pinewood Studios and The Rank Organisation, with its icon

image of a physically strong male (a boxer) striking the large gong, made its first appearance.

From its inception in the 1930s, the studios had a policy and the space to build their own sound stages on site, which reduced the costs enormously and the practice continues today. In 1936 fourteen different films were made in that first year. The first film to come out of Pinewood Studios was 'London Melody' starring Anna Neagle and was directed by her husband, Herbert Wilcox. Jessie Matthews also starred in films produced at the studios, which brought in a great deal of money, these included: 'Gangway' and 'Sailing Along'. Other famous stars who worked for Pinewood during that period were: Barry K. Barnes, Valerie Hobson and Alastair Sim.

The success of the studios was reflected in the famous boardroom within Heatherden Hall, which was wood panelled from the wood retrieved from the Mauretania when it was no longer in service. Although the studios were famous and the film stars well known, the dressing rooms were relatively plain and simple, with the main ones comprising of a telephone, radiator, dressing – table / desk, chair and a single bed.

During World War Two, the studios were used for storage and The Royal Mint was moved there. Filming was replaced by newsreels, which were produced by the Army Film Photographic Unit (AFPU)

on the war effort. There is a plaque today at the studios, showing thirty eight crew members' names, who died while working on the war effort.

Three famous people who learned their craft of directing at Pinewood were Richard Attenborough, David Lean and Alfred Hitchcock. Big box office successes produced during the 1940s and 1950s included: Great Expectations, starring Jean Sims and Alec Guinness in 1947 and Genevieve starring John Gregson and Dinah Sheridan in 1952. The bosses of the studio did not like that film. However, the public did and voted the film Best Film of 1953. The Doctor in the House series along with the Carry On films were also produced at Pinewood. Other famous films included: Reach for the Sky, A Town Like Alice, The Sword and the Rose and Above us the Waves. Gregory Peck was the first American to star in the Pinewood film, 'The Million Pound Note' in 1954.

The 1960s saw the first of the James Bond films. Sadly, by the 1970s Pinewood was facing financial difficulties but Superman came to the rescue! Christopher Reeves made his first appearance as Superman in 1976 for Pinewood and the film made £500 million and Pinewood Studios was saved. The 1980s saw more James Bond films produced and more recently The Iron Lady, Gravity and the Hobbit were produced, thus ensuring, for the moment at least, the future of Pinewood Studios.

### **August Meeting**

Our second meeting took place on 11th August, when our guest speaker, Zena Herbert, spoke on the subject, 'From a Suitcase to a Carrier Bag'. Would we be convinced that it would be a good idea to go away for the weekend armed with only the contents of a holdall, the size of a carrier bag?

Zena explained how she was first interested

in the amount of clothes ladies thought were necessary to pack for the holiday, even if it was only for a weekend. As a young girl, she noticed how much luggage the mill girls used to bring with them whilst staying at Zena's mother's B. and B. at Blackpool. Zena also spoke of her Austrian husband's tussle with a fellow traveller, who happened to be on the rather large size, over a blue suitcase. The tussle resulted in Zena's husband making a radical decision, which was, never to pack and take a suitcase on holiday ever again, not even for a three week family stay in Morocco.

The scene was set. Imagine one was going away to Paris for the weekend, with only a bag the size of a carrier bag, to pack everything in. The stay was to include a shopping trip, an elegant visit to the theatre and an attendance at an informal brunch. The first rule was to wear as much clothing as possible when travelling such as: a pair of trousers, a camisole, a blouse, a cardigan and a scarf plus a pair of stout, practical shoes. Only three pairs of footwear were allowed in total, which consisted of: a pair of stout shoes, a pair of strappy sandals and a pair of mules. Underwear consisted of one clean pair of knickers to wear and one pair to be washed at night. A vital part of the ensemble was a selection of scarves, ribbons, bracelets and numerous safety pins.

An Art and Craft teacher by profession and also a milliner, Zena had a love of textiles and an eye for turning the mundane into something special, with the use of ribbons and bracelets. The selection of scarves could transform the outfits completely and, pinned strategically, could give the illusion of blouses when worn with the cardigan.

I don't think the WI ladies will be throwing out their suitcases just yet...

✍️ Jackie Flint

# BRAYSCOPE

Experts in commercial & domestic horticulture

For all your **Commercial**  
and **Domestic** landscape  
requirements  
**Professional** and **Qualified**  
landscape maintenance and  
**Construction** company



Contact Kevin on

**01525 220948 07949 601630**

[brayscape@aol.com](mailto:brayscape@aol.com)

14 SCHOOL LANE, EATON BRAY BEDFORDSHIRE, LU6 2DT

# Come for Coffee at St Mary's

For a warm  
welcome and a  
cheering cuppa  
on the first  
Saturday each  
month in  
St Mary's Church  
Eaton Bray  
10.00am - midday



Are you an elderly or  
housebound resident ?

Would you enjoy a  
monthly (free delivery) fish  
and chip supper ?



If your answer is 'yes' to either of the above questions then please do get in touch.

We run this scheme on the last Friday of every month but need your orders no less than 48 hours prior to this. We have a voicemail facility on our phone if we are not there to speak to you directly. All messages will be confirmed back to you so you know your order has been received.

Please call on **01525 229 656** to place your order

*Ordinary people doing amazing things*





# EDLESBOROUGH TENNIS CLUB

Website by Jupiterwill

[www.etctennis.org](http://www.etctennis.org)

Play tennis    Have fun    Socialise    Feel good    Join our club

Join via the website, or call Iona McLean-Hall on 01525 220562 for details

Monthly  
draws

## New 100 Club

Spend £2 to  
spend a penny

In aid of toilets and other improvements  
at St Mary's Church, Eaton Bray



Contact: [eatonbraychurch@aol.com](mailto:eatonbraychurch@aol.com) or telephone: 222691

## Eaton Bray Academy

*The staff work exceptionally well as a team to promote children's welfare, learning and development and to make sure everyone enjoys their time at the pre-school.*      Ofsted 2012



*Children benefit from the abundant shared resources, access to school assemblies, the information technology suite and the extensive outdoor facilities.*      Ofsted 2012

### Pre School



**How many Pre Schools do you know that are part of the Main School?** Well, EBA is *one* School!

All the children wear School uniform, have their own book bag, can attend clubs and even eat our delicious School dinners, cooked on the premises by our own School cooks.

.We believe that quality Early Years education is essential; it is on this that everything is built.

We offer a caring, happy, secure and stimulating learning environment in which the children thrive.

**Come and have a look!**

Tel. 01525 220468 or email [admin@eba.ec](mailto:admin@eba.ec)

*Children clearly benefit and thrive as the accommodation, equipment and resources are well suited for their purpose and conducive to learning. Improvements to the premises and the outdoor area give children the confidence to explore and help all aspects of their development.*      Ofsted 2012

# ravencounselling

Teresa Raven, accredited and registered member of the British Association for Counsellors and Psychotherapists (BACP).

Counselling offers you a safe, confidential place to work through difficulties, issues or problems you may be experiencing.

My pricing starts at £15 for an initial consultation, with further sessions priced from £40. Please contact me for more information, or visit my website.



[www.ravencounselling.co.uk](http://www.ravencounselling.co.uk)



[ravencounselling@aol.com](mailto:ravencounselling@aol.com)



07960 090113



[facebook.com/ravencounselling](https://facebook.com/ravencounselling)

**Make your next holiday a *Disney* one!**  
with one of our luxurious villas right on the doorstep



MINUTES FROM DISNEY



CHEAPER THAN A HOTEL



PROFESSIONAL FRIENDLY SERVICE

**PersonalTouch**  
VACATION VILLAS

☎ 0845 5280 162

🌐 [personaltouchvacationvillas.com](http://personaltouchvacationvillas.com)

As former Edlesborough residents; we now own and run a family business in Florida, USA. Let us help make your Disney holiday as **PERFECT** as it can be. Our **private pool villas** (AKA 'home from home'), cater for all your needs and are **within 5 miles of the parks** - the perfect base for your trip.

# Leighton Plumbing & Heating

Oil fired boilers  
service, repairs  
& installations



All other aspects of plumbing  
& heating undertaken

Oftec registered & insured

01525 385250  
07774 567472

11 Woodman Close  
Leighton Buzzard  
Beds  
LU7 3NU

leighton-plumbing@ntlworld.com



Helping Hands  
The Home Care Specialists

Est. 1989

## Do you need a Helping Hand?

Our **local** care team has been providing award winning quality homecare since 1989.

We offer a homecare service **from 30 minutes per week to full-time Live-in Care**, which enables you or your loved one to remain at home with compassion and dignity.

To find out how we can help,  
call: 01296 752 632 or  
visit: [www.helpinghands.co.uk](http://www.helpinghands.co.uk)

 **Stoten Gillam**  
chartered accountants  
chartered tax advisers

99 High Street South  
Dunstable  
LU6 3SF  
Tel: (01582) 608601  
[www.stotengillam.co.uk](http://www.stotengillam.co.uk)

ICAEW CHARTERED ACCOUNTANTS   "Practical Solutions for Growing Businesses" 

  
W Roff Agricultural Services

- Hay & straw for sale
- Paddock maintenance
- Fencing

 07909 680807  
ELSA GE FARM, CHEDDINGTON

Wednesdays  
1pm to 2:30pm  
(During term time)  
Eaton Bray Village Hall  
(Church Lane LU6 2BJ)

**cheeky monkeys** 

under fives play time

£1 per adult/child - Under 1 yr free

creative play 🍌 singing  
stories 🍌 baby corner  
craft 🍌 healthy snack

01582 699092 🍌  
(Beehive Children's Centre)

 Come along,  
make new friends  
and join in  
the Fun!

# Coffee Tavern

Large Hall

£6.00 per hour

Commitee Room

£3.50 per hour

Large Hall &  
Commitee Room

£8.00 per hour



**Bookings 01525 220891**

**Stairlift and access ramp available**

We are a nurse-led home care provider committed to delivering the very highest standards of care.

Support from our dedicated team gives you or your loved one the peace of mind and confidence to be able to continue living at home.

Family-owned and managed, we are independent and do not belong to a national chain or franchise. We are registered with the CQC, number 1-1499072841.



**your own  
home care**  
putting the nursing back into care

To talk to us about your requirements please call Helen Yates RGN on 07920887414 or 01442 843064 or email [helen.yates@yourownhomecare.co.uk](mailto:helen.yates@yourownhomecare.co.uk)



[www.yourownhomecare.co.uk](http://www.yourownhomecare.co.uk)





**Some comments from our recent Ofsted report:**

Children are consistently offered a stimulating range of activities and opportunities which enable them to make good progress towards the Early Learning Goals.

Staff have a good understanding of creating a safe and welcoming environment . . .

Staff support children well and encourage them to be active in their learning and to think critically.

We are a committee run playgroup operating five mornings a week 9:15 – 12:15 for children aged 2 to school age.

**If you would like to find out if your child would be happy here, please phone our Playgroup Leader, Ann Tobin on 07816 358 342.**

[www.dagnallunderfives.co.uk](http://www.dagnallunderfives.co.uk)

# janes

## Electrical Appliances, Bikes & Flooring Store

**The Family Business with 130 years of recommendation**



## Free Delivery & Installation

### On Kitchen Appliances & TV's

within a 15 mile radius (excluding installation on Gas & Built-in Appliances)

## Sound Advice & Peace of Mind

**4-8 High Street, Edlesborough, Dunstable, Beds LU6 2HS**

**Tel: 01525 220208 Fax: 01525 222802**

[www.janesltd.co.uk](http://www.janesltd.co.uk)

# GALRAL SERVICES

AUTOMOTIVE, AGRICULTURAL & PLANT MAINTENANCE

Modern, classic and vintage vehicles; servicing & restoration

Over 40 year's local experience in automotive industry

Agent for BEPCO tractor parts.

Agent for TRS restraint systems (ratchet straps)

Welding & fabrication services (sheet steel & aluminium)

Auto electrical and engineering works

Contact Simon

## 07785 278188

Fax/answer machine

## 01525 210597

# GATES

Plumbing & Heating Limited

We'll help meet your heating needs

- Biomass boilers
- Air source heat pumps
- LPG central heating
- Oil and Gas central heating

Please contact us on:

01296 670445

info@gatesheating.co.uk

www.gatesheating.co.uk



We are Gas Safe, OFTEC, NAPIT  
and MCS registered

Government funding for renewables

## Simples Fitness

Fitness classes & individual fitness training

- \* Circuit Training
- \* Cardio Blast
- \* Crazy Abs
- \* Buggy Push
- \* Box-Fit
- \* Ski-Fit

Membership £35 per month or Pay as you go

*Forget the gym...make fitness simples!*

[www.simplesfitness.com](http://www.simplesfitness.com)

## MINI DIGGER WITH DRIVER FOR HIRE

Fully insured ↔ Competitive rates ↔ Based locally  
Aggregates Supplied ↔↔↔↔ Tree Stump Removal

Contact Simon

## 07785 278188

Fax/answer machine 01525 210597



## Electrical Services

[www.rselectricalservices.com](http://www.rselectricalservices.com)



**FULLY QUALIFIED  
ELECTRICAL ENGINEER**

CPS Registered through NICEIC Scheme

Competitive prices and quality service

Available for all your domestic and  
commercial electrical requirements

No job too small

Call Russell Sears:

07578 008567

01525 220008

17 Good Intent, Edlesborough



## Employing a Tradesman and NOT a Cowboy!

*Jonathan Vernon Smith is the Sony Award winning mid-morning show presenter for BBC Three Counties Radio. During his consumer hour he helps listeners with their consumer problems and now shares his advice with you.*

Sadly over the years I have dealt with far too many cases of consumers who have employed the services of a rogue tradesman and have paid a heavy price for their mistake. But how do you find a good tradesman to carry out work in your home or garden? Here are my top tips:

NEVER employ the services of someone who knocks at your door offering their services. If a builder, roofer or plumber has time to cold call people, then they're obviously not very busy. Why are they not very busy? BECAUSE THEY'RE PROBABLY NOT VERY GOOD! A good tradesman will be busy with work for weeks in advance. I am always similarly sceptical of anybody who tells you on the phone they can do a job for you that day. Always ask your friends and neighbours if they can recommend a good tradesman when you decide you need some work doing. It may sound simple, but the best way I have always found to employ the services of someone good, is to use your trusted contacts. Chances are if they did a good job for your best friend or next door neighbour, they'll do a good job for you too.

Make sure you always get at least 3 quotes from different people before you decide who to use. Don't necessarily use the cheapest, but at least if you have a range of quotes you can ensure that you are not

overpaying for work to be undertaken. I generally go for the quote in the middle as long as I have a good feeling about the tradesman and feel I can communicate effectively with him/her.

Always ask for references (particularly when you're using someone to carry out a large job). Don't be afraid to make contact with their previous customers and ask if you can go and look at the job they did. Ask them if they had any problems and what the tradesman/company was like at resolving those problems.

It is very important that you agree a method of payment before work begins. I personally do not pay for work until it has been completed. If the builder/electrician/plumber needs to buy parts etc for the job, then I am happy to pay for that on the basis of a receipt, however I insist on paying for labour costs on completion of the job. When you're dealing with a large job (eg an extension), then I would agree a payment plan in writing. However, you should always ensure a large enough final payment is retained to act as an incentive for the job to be completed to your satisfaction.

Finally, NEVER agree work without a written quote. Verbal contracts and quotations are of course legally binding, but trying to prove what was agreed weeks down the line is normally a nightmare.

Of course, as always if you follow my advice, but still come unstuck and find yourself dealing with a cowboy, then remember you can always call my consumer programme on 01582 637450.



# Edlesborough Cricket Club

## 2015 Season Review

### First XI – Captain BEN TYE

#### **Four Counties Cricket League - Division 5**

**Played 18, Won 10, Tied 1, Drew 5, Lost 1, Abandoned 1**

**Points: 339**

**Finished: Second**

**(PROMOTED TO DIVISION 4)**

It's an exciting time to be part of Edlesborough Cricket Club – and the 2015 season promised much for the club with plans well underway for a new pavilion, youth coaching developments, pursuing the ECCB Clubmark status and raising funds for new equipment.

What proved to be an exciting year for the First XI under the stewardship of a new captain Ben Tye started in the most innocuous fashion.

We drew our first two games having bowled and fielded poorly, taking only 10 wickets. In fact had it not been for some great defensive work by the mid to lower order we may well have lost both of those games, but by salvaging draws we did demonstrate the grit, determination and sheer bloody-mindedness that was to define our season. But after two games (having played one less than the rest of the Division at that point), we found ourselves in the bottom two.

Our next game was at home against Milton Keynes City where we put the opposition in to bat and bowled tightly, restricting them to 158 for 5 wickets in their 44 overs. Then came our turn to bat, our openers Andy Tyne (315 runs in the season - average 24.23) and the explosive Tehmoor Abbas (621 runs - average 56.45) ensured we knocked off the runs in a mere 21.4 overs for the loss of only one wicket (Tyne 70\*, Abbas 64) to register our first win of the season.

And so the tone was set - we decided that, with our stingy bowling and

extremely deep batting line up, to try and win the toss and bat second for the remainder of the season, playing to our strengths. As it happened skipper Ben Tye became rather

adept at winning the toss! After the MK City victory we won our next six games on the trot – it should have been eight wins had it not been for our inability to bowl out Stewkley Vicarage's last two batsmen who defended stoutly over 10 overs to sneak a draw.

During that winning run perhaps the most notable victory came over the then top of the table Great Brickhill, who had set a fierce early pace having won batting first (and thereby gaining the maximum 30 points) in three out of their first four games taking an impressive 38 wickets along the way. Boro won the toss and decided to bowl first, and the ever-accurate Scott George bowled his 10 overs for only 31 runs and the impressive youngster Ali Thorne bowled took 3 for 19, meaning that we had to chase 168.

Tyne and Abbas set a solid platform but departed for 12 and 30 respectively, the ever-dependable Chris Kimpton (432 runs this season, average 43.20) was lost for 11 leaving skipper Tye (62) and Ejaz Farooq (27) to see Boro home to an emphatic victory in 33.5 overs.

With only three games left we were still unbeaten and sitting at the top of the Division, but things were very tight with four teams still vying for the two promotion positions. That weekend we faced one of our rivals Elstow, who were on an impressive run, regularly



*Tehmoor Abbas batting*



scoring well over 200 runs in every game. But that was before they encountered the 'boring'(!) Boro bowling line up who restricted them to 173 for 8. Chief amongst their tormentors was Tim Harris who took 3-19 in his 10 overs. Sadly that was



*Ehtisham Saddaq Bowling*

With 10 overs left and the 125 run target almost within reach Kimpton was lost and the effervescent Edlesborough legend Les Thorne came to the crease to be met by the incumbent Skipper. "You do what you like son," said Les, "but I'm going for the win".

where the good news ended, the Boro could not handle Elstow's impressive bowling on a lively pitch and the previously reliable tail finally succumbed in the penultimate over when a draw had seemed likely and we had lost our first game of the season. The only batsman who shone that day was the Boro's extremely talented all rounder Ehtisham Saddaq (23 wickets and 167 runs at 27.83) at who scored a fantastic 41 before succumbing to injury and giving his wicket away when he looked like he might win the game on his own.

We quickly bounced back and won our penultimate game of the season decisively, but still needed 5 points from the final game of the season to secure promotion. Not unsurprisingly it was a nervy affair. Stewkley Vicarage came to the Boro and batting first very nearly upset the party, reaching 78 for 0 after only 16 overs. Cue the introduction of spinner Richard 'Woody' Wood, the old Boro stalwart shone once again as he had so many times this season and found the breakthrough, ending up with figures of 3-22. Stewkley made 161 for 7 from their 44 overs, more importantly (with three bowling points secured) Boro left needing only two batting points (ie 125 runs) to confirm promotion.

The chase started well, but nerves were again playing their part as Boro lost wickets at regular intervals. Tye (15) and Kimpton (18) made the decision to drop anchor and aim for the 125 runs required to bring Boro home for the draw.

Galvanized by Les' attitude Tye decided to take on the bowling - and was promptly bowled.

But no matter, Tye dismissal introduced our other Thorne Ali and the father-and-son combo set about their task with relish.

They batted magnificently and with great freedom, passing the 125 mark to secure promotion, then pinned their ears back and went all out for the victory. With one ball remaining six runs were required to tie the game - a ball that Ali Thorne duly launched over midwicket onto the High Street, leaving him on 30 and father Les on 31 not out. Frankly the season could not have finished on a more fitting note.

**Second XI – Captain JAMIE BLACKFORD**

**Four Counties Cricket League - Division 7  
Played 18, Won 4, Drew 6, Lost 5, Abandoned 3  
Points: 230**

**Finished: Sixth**

The skippers' hopes for the new season, given enough regular players, were to continue in the form that had allowed the Edlesborough Second XI put in a serious late bid for promotion in 2014.

And, in that respect, the 2015 season started well enough as they matched the First XI in going unbeaten for the first 5 games. Starting with a home game that the captain felt was for the taking (52 needed with 12 overs left), when the rain saved Wolverton. There was a real thriller in the next game, when Les Thorne, making a rare appearance for the Second XI, made an unbeaten 57 to

set Ivinghoe & Pitstone a challenging 176 to win. The opposition had batted well and needed two runs off the final ball to win. Everyone at The Green held the breath as the ball went airborne, but the long striding Martin McNeill raced around the outfield and took a fine running catch to secure a winning draw for the Boro.

A dogged 40 from Ceri Davies saw another draw at Wilden, before the unbeaten run became a winning run away at MK New City. Sheridan Pretty unfortunately falling four short of a maiden century, before MK were skittled for 45 runs as debutant Syed 'Shah' Din took 4-4 and effected a run out. It was a similar story the following week as Wing & Wingrave were put the sword at The Green and Boro secured back-to-back 30 point victories. Then came the real test, away at runaway leaders Leighton Buzzard, who had won every game so far. Skipper Blackford (who took three more wickets in the match to go joint top of the divisional wicket takers list) was happy at the break as the opposition were restricted to 154. And it was to get better as Graham Bunting looked comfortable on his way to 57, until he broke his bat, and his luck changed. The first ball he faced with a new bat saw him yorked by a quality delivery, and anchor Paul Shepherd was run out in the same over and the chance of victory disappeared. But the fight wasn't over, and the draw seemed likely with the pair in and only 7 balls left. Unfortunately it was not to be and the game was lost.

As June rolled in and at the height of (Ahem) summer and the dream of promotion was still on. And in the home game against Printers, Martin McNeil put in the performance of the season to keep the push going. Having taken 2-26 in his 10 overs and bagged a couple catches, there was no rest for Martin as he came in at 3 with just 1 run on the board. By the time he holed out for 86, just three runs were needed for victory, and another 25

points were secured.

However, from that point the Boros fortunes took a distinct dive.

Rain saved them from an embarrassment after being bowled out 75 against promotion rivals Aspley Guise. Another 50 for Sheridan Pretty, and a target of 200 wasn't enough at Ivinghoe where wickets were hard to come by. It was the opposite at Wolverton the following where Wolverton won with only had two wickets left despite only chasing 98. There were 50s for both Pretty and McNeil, and more wickets for the Captain Blackford and McNeil against Widen, but again it was in vain as once again Boro couldn't pick up the last two wickets and suffered a third successive defeat.

However the team performance of the season came in mid-July, when, with Captain Blackford away, it was left to vice-Captain Pete Bignall to lead the team. And he lead from the front. Firstly he took 4-48, and restricting MK New City to 226, then carefully marshalled the batsmen to gain a creditable losing draw, thanks in no small part to 63 not out from the ever-reliable Ceri Davies. Bignall followed that with another worthy draw the next weekend again proving his value as vice-Captain, as well as putting in some quality performances with the ball - regularly opening the bowling and offering some control with his spin bowling from one end. Next up was Leighton Buzzard again, and they only needed a win to clinch the title, which was incentive enough for Boro to work hard as a team to gain yet another impressive draw.

With the season drawing to a close, the Second XI were now playing for pride, and a lot of pride was taken from the performance away at Printers, where another draw was secured in a last-over thriller. The Printers run chase was set up by an outstanding partnership between Ejaz Farooq and Ceri Davies. Farooq took the headlines with the

clubs only century of the season scoring 102, but it was the way that Ceri kept him going from the other end that really impressed, whilst making a stoic 39 not out, virtually all in singles on a very hot day.

Farooq was star again the following week as he made 59 not out in 39 balls, the perfect foil for Paul Shepherd who batted for 40 overs and made 79 not out to hold the innings together, before Damian Blow took 4-19 to wrap up an easy victory over Bletchley. It was Blow again in the final game, where he again took 3-8 to eventually add the wickets that his consistent bowling performances this season had so rightly deserved. Another 50 from Pretty had helped set league runners-up Aspley Guise the meagre total of 142, and they appeared to be cruising at 90 for 1 - but a devastating spell from Lloyd Wright (4-28) and Blow saw Aspley Guise get a bit twitchy towards the end before stumbling over the line with eight down.

That final game at Aspley Guise was indicative of Edlesborough 2nd XI's entire season - there were some brilliant individual performances, and as a team we never knew

when we were beaten. There was spirit, and fun within the side, and we were always competitive. But in the end we never quite had the quality to compete with the top sides in the Division.

The Captain had targeted promotion, and dared to dream the reality of it mid-season, but he had also been concerned with the lack of players available. Given this a record of fielding a side every week and securing a respectable mid-table position was just about satisfactory.

We have something to work with and will try hard again next season!

### **St Mary's 100 Club**

Congratulations to the following winners:

#### **August 2015**

1st Prize – Barbara Morton

2nd Prize – Bruce Rogers

3rd Prize – Hazel Gibbons

If you would like to join the 100 Club please collect a form from [www.stmaryseatonbray.org.uk/Groups/100-club](http://www.stmaryseatonbray.org.uk/Groups/100-club) or from St Mary's Church, Eaton Bray.



## **Appledown's Rescue Dog of the Month**

This is Edmure Tully, a one year old crossbreed smaller than a Labrador. Edmure is a playful and affectionate young dog who needs an active home with owners willing to carry on with his training. He is good with other dogs and travels well. He cannot be rehomed in Dacorum.

If you feel you could offer Edmure or any of our other dogs a loving and secure home please call in at the kennels any day between 10 a.m. and 4 p.m. Our staff are happy to offer advice and information.

Please note that we have restrictions on rehoming dogs to families with children under 7 years of age. Full details of the rehoming process can be found on our website or call the kennels.

**Appledown Rescue and  
Rehoming Kennels  
Harling Road, Eaton Bray  
Beds LU6 1QY**

Call 01525 220383 or e-mail:  
[appledown.kennels@btinternet.com](mailto:appledown.kennels@btinternet.com)  
Website: [www.appledownrescue.co.uk](http://www.appledownrescue.co.uk)

Follow us on Facebook!

Reg Charity No. 1116848

# Dagnall Weather Station (AONNB)

## Weather Conditions for July & August 2015

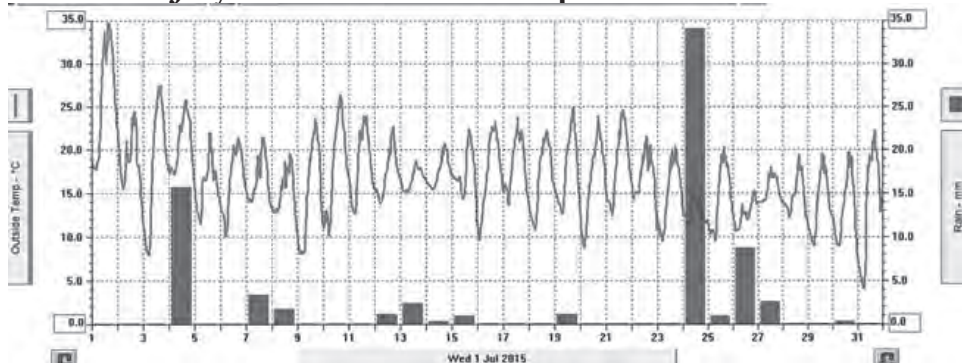


**Elevation: 450 ft - Latitude: 51° 50' 13" North - Longitude: 0° 33' 34" West**

**July:** started off very hot with record breaking temperatures for some areas, here in Dagnall the temperature on the 1st of 34.9°C. For the next 2 days the temperature was around 25°C and then for the rest of the month it was below average with some cool days and nights. It was noticeably windier throughout the month. Mostly it was dry with a few very wet days which added up to 74mm of rain that's 20% above the 7 year average.

	High	Date/Time	Low	Date/Time
Temperature	34.9°C	1 July 16.00	4.1°C	31 July 06.00
Mean Temp	16.8°C	Dominant Wind:		W
Humidity:	96%	3,4,24-27. July	28%	July 17.00
Barometer:	1025.2 hPa	3 July 08.00	994.9hPa	26 July 21.00
Wind Speed	33mph SSW	1 July 11.30	Months avg.	6 mph
Wettest Day	24 July		34.01mm	Ins 1.338
Monthly Rain:	Total	July	74 mm	Ins 2.913

### July 2015 Plots shows Temperature & Rain

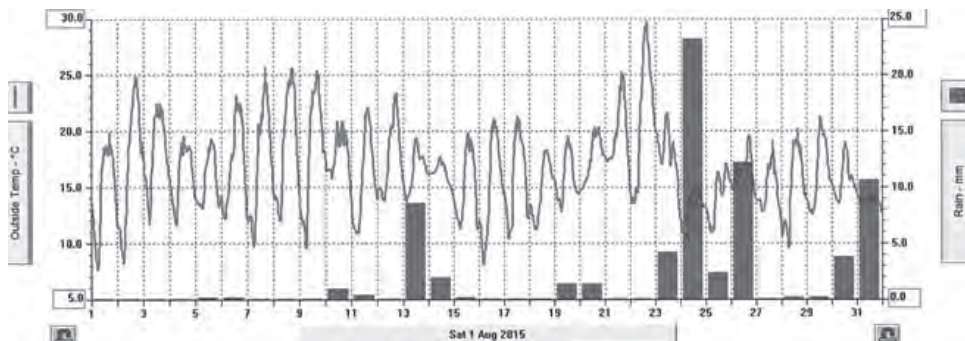


August: was an unsettled cool month with the temperature dropping below 10°C on 6 nights. There was only one day 22nd when temperatures got close to 30°C this set us up for the bank holiday weekend only for the bank holiday Monday 24th which turned out to be the wettest day in August with 23.19mm. Overall the month had 17% more rain than the 7 year average. (I think we should move the August Bank Holiday to June when the weather is better?)

	High	Date/Time	Low	Date/Time
Temperature	29.8°C	22 August 16.00	7.7°C	1 August 06.00
Mean Temp	16.5°C	Dominant Wind:		SW
Humidity:	98%	22 August 07.30	35%	9 August 12.30
Barometer:	1023.6 hPa	12 August 08.30	996.5 hPa	August 14.00
Wind Speed	30mph SSE	25 August 15.00	Months avg.	4.8 mph
Wettest Day	24 August		23.19 mm	0.764 ins
Monthly Rain:	Total	August	72.4mm	0.913 ins
Yearly Rain:	Total	8 Months	414.4 mm	16.135 ins



## August 2015 Plots shows Temperature & Rain



**Station News:** I have had a new computer installed with updates of weather software. The service should now be more reliable and [www.dagnallweather.co.uk](http://www.dagnallweather.co.uk) web page including the history is now working correctly. For weather data 24 hours a day, updated every 15 mins, visit: [www.dagnallweather.co.uk](http://www.dagnallweather.co.uk) and [http://bit.ly/weather\\_dagnall](http://bit.ly/weather_dagnall) this site forecast and much more. If anyone has a question, comment or wishes to contact me please email: [david@dagnallweather.co.uk](mailto:david@dagnallweather.co.uk) or telephone: 01442 843883

## Edlesborough Book Group

### More Tales of the City by Armistead Maupin

More Tales of the City is the second in a series of nine books concerning a motley crew of characters, living in San Francisco in the late nineteen seventies. The books started life as a newspaper feature; and it shows in the episodic nature of the book and the extremely short chapters. The characters and plot are all very much larger than life and suspension of disbelief is helpful if one is to enjoy the story. The series of books is extremely popular, with regular adaptations on the radio and I believe TV films have been made. Armistead Maupin is a gay man living with a gay rights activist in California and at the time that this book was written, attitudes towards same sex couples was very different; so in its way although its plot and characters are over blown, the book is a trailblazer. It is still I believe, somewhat of a Marmite book. Humour is very much a personal thing and this style you either love or hate.

The group as a whole, didn't like the book and wouldn't rush to read any others in the

series. It did however, spark a very long and interesting discussion about gay rights and the public's acceptance generally of things that were once taboo.

## London Luton Airport

With an increase in aircraft in the area and in particular when the wind is from the East, we are getting some aircraft flying directly over the village to join the flight path into the airport. If you are disturbed by the traffic flying over the village, there is a complaints hotline number: 01582395382. This is an airport number where you can register your concerns. It is important to do this if we are to reduce these disturbances over our village.

If you need to complain about Heathrow flight noise the number is 0800 344 844. Email: [noise\\_complaints@heathrow.com](mailto:noise_complaints@heathrow.com)





# Salvation Sound



**Pearls** - Pearl as a name means precious. Our Queen seems to be fond of wearing them, as was her mother before her. They are worn to adorn and beautify women on notable occasions – banquets, dinners, dances, balls, state openings, such as parliament; how many of my readers I wonder have a string of pearls tucked away in their jewellery box?

Think about a pearl. It is a beautiful marine gem, made by an oyster. It begins when an insect or parasite punctures the shell of the oyster, usually where the two shells meet, and through that hole enters an alien, a foreign body, a grain of sand or grit and it's this tiny irksome thing that causes the oyster great pain. So much so that it secretes a thin layer of calcareous substance (nacre) to surround it; after several years of this process a pearl is formed. Surely then pearls stand for pain and stress.

In the last book of the bible there is a word picture of Heaven's Holy City, it has twelve gates leading into it, each one it says is made from a single pearl. Revelation ch.21 v 21. The way into heaven is by way of the pearl, but the pearl was born in suffering and pain.

Each one of us during our lifetime will suffer both pain and anguish, that is a well known fact. The problem with suffering is that it can become a stumbling block in the way of our faith. So many people ask questions like; Why me? Why are babies born deformed? Why do we have wars? Why are there earthquakes, hurricanes, volcanic eruptions? Why, if God is there, does he allow these things to happen?

Well, if we didn't have pain - we wouldn't have caring. If Milton wasn't blind, would he have written "Paradise Lost"? If Beethoven wasn't deaf would he have composed such beautiful music?

If Jesus hadn't taken the way to Calvary, where would we be? It seems to me that the pearl is an example that shows us that good can come from evil. It is the death of the oyster that brings such a lovely, precious thing into our world.

John Mason wrote in his hymn of praise, "I've found the pearl of greatest price, my heart doth sing for joy; and sing I must, for Christ I have, O what a Christ have I. Christ is my meat, Christ is my drink, my medicine and health, my peace, my strength, my joy, my crown, my glory and my wealth"

Job 28 v 18 and 20 says, "The price of wisdom is above pearls. Whence then comes wisdom?" We still have so much to learn – as the saying goes – no pain, no gain.

The road to heaven will not be easy, but when the time comes for us to sing "Open up them pearly gates", imagine the joy of knowing that all of our struggles will cease, there will be peace and we will attain a place in that beautiful city with its mansions of light.

✍Maureen

## The Salvation Army, Booth Place, Eaton Bray Weekly Activities



### Sunday

Footprints (Sunday School)	9.45-10.45am
Morning Worship	11am
Songs of Praise	4pm
(3rd Sunday of the month from May to Dec)	

### Tuesday

Coffee Morning	
(alternate weeks)	10-11.30am
Music practices (all welcome)	7.30-9pm

### Wednesday

Home League	2.30-3.30pm
(Ladies Mtg but all welcome)	
Champions Challenge Club (term time)	
(Ages 5-10 years)	5.45-6.45pm

### Thursday

Parent and Toddler Group	
(Term time)	9.30-11.30am
Haberdashers' night	
2nd Thursday of month	7.45 pm
Ladies Fellowship	
(Last week of month)	7.45pm

For further details please call Envoy Hilary  
01525 222087 / 07932 057490

E: [hilary.chadwick@salvationarmy.org.uk](mailto:hilary.chadwick@salvationarmy.org.uk)

W: [www.salvationarmy.org.uk/eatonbray](http://www.salvationarmy.org.uk/eatonbray)



# Premier Garage Doors & Gates



## Quality Garage Doors

- ✓ Superb choice of designs in metal, wood and fibreglass
- ✓ Any size door made to your requirements
- ✓ Large selection of spares & fast repair service available
- ✓ New or existing doors converted to automatic
- ✓ Professionally fitted by own expert craftsmen
- ✓ Prompt free estimates & advice
- ✓ We cover all areas



**(EST 1984)**

DIY kits available  
Insurance work welcome  
Council approved  
Remote control gates also available



Unit 7, Sparrow Hall Farm, Leighton Road, Edlesborough LU6 2ES

**01525 220212**

**[www.premiergaragedoors.co.uk](http://www.premiergaragedoors.co.uk)**

THE APPLIANCE & FLOORING STORE

@janes



Karndean  
Designflooring



[www.janesltd.co.uk](http://www.janesltd.co.uk)

Carpets  
Vinyl  
Laminate  
Karndean  
Wood  
& Rugs

**CARPETS**

**& FLOORING**

**Start From £10sq.m**

**Alstons**  
Sofas for Living

**Sofas & Cushions**

Made to Order

6 to 8 weeks delivery

**Our Additional Fitting Services**  
Moving of Furniture  
Uplift & Disposal of old flooring  
please ask for more details

**01525 220208** Carpet Cleaner Hire from £19.99 24hr

4-6 High Street Edlesborough LU6 2HS