

FOCUS

February 2015

**Large housing
estates for our
villages...
Have your say!**

**The local village magazine just for Us!
Eaton Bray, Edlesborough, Northall & Dagnall**

The White Horse Inn At Eaton Bray



Market Square
Eaton Bray
Beds
LU6 2DG
01525 220 231
www.thewhitehorseeatonbray.co.uk



**Midweek Six pound lunch
Monday to Friday 11.30am til 2.30pm
Great traditional pub dishes for £6**

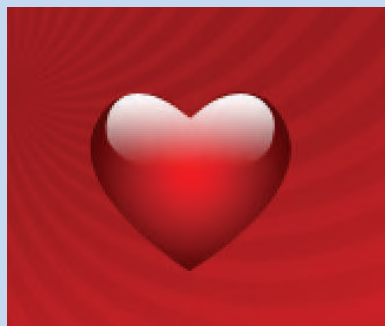
February special offer

**Monday to Thursday Evenings
Pay half price for house wine
when four people eat main courses**

(cannot be used with any other offer)



**Valentine's day
Saturday 14th Feb
Find us on Facebook to see
Chef Lee Mark's special
Valentine's Day menu or pop in
to collect a copy**



**Join us to celebrate the Chinese New Year!
2015 is the year of the goat, there won't be
goat on the menu but Lee Mark's specials do
include Chinese themed courses.
The usual menu is also available**

Focus Magazine Committee

Joint Editor: George Crutcher

7 Summerleys, Edlesborough 221637

Email: george.crutcher@tiscali.co.uk

Joint Editor: Sally Siddons

34 Wallace Drive, Eaton Bray 221733

Email: sallysid@hotmail.com

Dagnall Representative: Sue Cawdell

10 Deans Meadow, Dagnall 01442 842200

Circulation Manager: John Plater

41 Church Lane, Eaton Bray 221095

Treasurer/Leaflet Enquiries: Ken Coates

10 The Nurseries, Eaton Bray 220868

Advertising: Sally Siddons

34 Wallace Drive, Eaton Bray 221733

Design and Layout: Tracey Moren

(Moren Associates Limited) 01525 229695

Printed by: Priors Press

Dunstable 01582 699851

Copy for publication to the Editors or one of the following by the **10th of the month:**

Kevin Cabbage

'Larums', Eaton Bray Road, Northall

Val Barrow

3 Chestnut Close, Dagnall

Focus accepts no responsibility as to the accuracy or content of any advertising or articles published in 'this' magazine neither do they reflect the opinion of members of the Committee.

© Articles published in Focus may not be reproduced without permission.

Focus would like to remind contributors that the deadline for articles is the 10th of the preceding month.

Kindly Note

If the event you wish to advertise falls in the first week of the month, it is advisable to get the details into Focus a month earlier. The magazines are not delivered from the printers until the first of the month, therefore it takes a few days for them all to be circulated throughout the village.

✉ Editors

Village Hall Bookings

To book your local village hall for an event please contact the following:

Northall: Lorna Cabbage Tel: 01525 220361

Eaton Bray: Norman Lee Tel: 01525 222831

Dagnall: Elizabeth Coates Tel: 01442 842550

Edlesborough Memorial Hall: Penny Pataky, Tel: 01525 229358

Police Contact Numbers...

making neighbourhoods safer together

General Assistance (Recommended Number): 101 Emergency: 999

Bedfordshire Police (Eaton Bray)

Leighton Buzzard Police Station/Kathryn Horgan: 01582 473418

Typetalk: 18001 01582 473418

Email: LPT.LeightonRural@bedfordshire.pnn.police.uk

Thames Valley Police (Edlesborough, Dagnall & Northall)

PCSO Jackie Dodson Mobile: 07800 703 524

Email: NHPT@thamesvalley.pnn.police.uk

Village Diary February 2015



Weekly

Mon-Fri (term time)	Eaton Bray Pre-school, Eaton Bray Lower School, 01525 220468
Mon-Fri (term time)	Dagnall Under 5's, Dagnall Village Hall, 9.15am - 12.15pm, Mrs Ann Tobin 07816 358342
Mon-Fri (term time)	Edlesborough Pre-School, Edlesborough School, 01525 220431 manager@edlesborough.bucks.sch.uk
Mon-Thu (term time)	Totternhoe Pre-school, mornings, Totternhoe Lower School, Michelle Urbanowicz on 01582 668841
Mondays	Pilates, 10.45am, St.Giles Church Hall, Totternhoe, Lisa: 07799 893489
Mondays (term time)	2nd Eaton Bray Brownies, girls 7-10 years, Edlesborough Memorial Hall, 6 - 7.30pm, Contact Sandra Counsell 07979 521900
Mondays	Dagnall Community Choir, All Saints Church 7.45 – 9.45pm
Mondays	Weight Watchers, 7pm, Eaton Bray Village Hall
Mondays (term time)	Movement and exercise classes with a dance flavour, Northall Village hall 2-3.30. Contact Jan 01442 864271.
Mondays	Curtain Call Youth Theatre 5-7.30pm, Eaton Bray Village Hall, Gavyn 01525 220525
Mondays	Curtain Call Theatre Group - 7:30-10:30pm Eaton Bray Village Hall, Sheila - sdtwinkletoes@yahoo.co.uk
Mondays	KFPA ISTD Classical Ballet classes, 3+yrs, 4.15pm, Edlesbrough Memorial Hall, www.kfpa.co.uk
Tuesdays	Line Dancing, 1.30-3p.m., Eaton Bray Village Hall, Lyn Stubbs 220731
Tuesdays	Pilates, 10-11am, Eaton Bray Village Hall, Nicky Roussou 07861 162680
Tuesdays	Totternhoe Baby & Toddler Group, 9.30-11.30am, St. Giles Church Hall, Ruth Allen, 01525 222468 or 07796 265174 or email ruthallen002@gmail.com
Tuesdays	Northall Baby & Toddler Group, 9:30-11:30am, (open in the Summer School Holidays) Northall Village Hall, Stacey Richmond 01525 222999/07957 607592
Tuesdays	Tap & Ballet Classes, JoAnn Latus School of Dance, 4-8pm, Eaton Bray Village Hall, 01582 620576
Tuesdays	Circuit Training - Edlesborough School Hall, 7-8pm - www.simplesfitness.com
Tuesdays	Coffee Morning, Bring & Buy, Table Top Sale, 10-12noon, Salvation Army Hall, Booth Place, Eaton Bray
Fortnightly	
Weds (term time)	Cheeky Monkeys Under 5's playtime, 1pm - 2.45pm, Eaton Bray Village Hall, contact Rachel on 07789 760007
Wednesdays	Pilates, 7.15pm, Northall Village Hall, Lisa: 07799 893489
Wednesdays	Egyptian Dance Class, 7.30-8.45pm at Eaton Bray Village Hall. Contact: Soraya on 07976 964316 for more details
Wednesdays	Northall & District Age Concern Wednesday Club, 10am - 3pm, Northall Village Hall, Contact Anna 221996
Wednesdays	Dynamic Yoga 6.30-7.30pm £5 Eaton Bray Coffee Tavern Keira 07936 693696
Thursdays	Yoga, Northall Village Hall, 11.30am-1pm 01525 377542
Thursdays	Baby & Toddler Group, Salvation Army Hall, Booth Place, Eaton Bray, 9.30-11.30am
Thursdays	Keep Fit, Edlesborough School, 8pm Tel: 01582 668735
Thursdays	Jazzercise, 9.30-10.30am, Eaton Bray Village Hall, Angela Veryard, 01525 715208
Thursdays	KFPA Street dance classes 4+yrs 4pm, Edlesborough Memorial Hall, www.kfpa.co.uk
Thursdays	Central Bedfordshire Children's Centres' Toy Library, 9-9.45am, Eaton Bray (School Lane) Public Car Park
Fortnightly	
Fridays	Keep Fit class, Edlesborough Memorial Hall 10 - 11am
Fridays	Tap & Ballet Classes, JoAnn Latus School of Dance, 4-8pm, Eaton Bray Village Hall, 01582 620576
Fridays (term time)	"Little Luvvies" baby ballet classes 10am-11.30am. Contact Emma Whittemore on 01525 376124

Village Diary February 2015



Fridays (term time)	Kids Club 6:00pm to 7:00pm Grace Baptist Church, Edlesborough (across from the post office)
Fridays	Crazy Abs abdominal workout - 6-6:30pm, Edlesborough Memorial Hall - www.simplesfitness.com
Saturdays	Jazzercise, 9.30-10.30am, Eaton Bray Village Hall, Angela Veryard, 01525 715208
Saturdays	Drama Class for Children, 10.35am-12.35pm, Eaton Bray Village Hall, Claire Casey, 07792 508591
Saturdays	KFPA Musical Theatre classes 4+yrs www.kfpa.co.uk , 10am, Edlesborough Memorial Hall
Sundays	Sundays Worship at 11:00am and 6:30 pm Grace Baptist Church, Edlesborough (across from the post office) Barry 01525 229610 or Peter 01525 221048

Monthly

1st Monday	Eaton Bray Parish Council Meeting, 7.30pm, The Coffee Tavern
1st Monday	Eaton Bray W.I. Meeting, 7.30pm. Eaton Bray Methodist Church Hall. Contact Barbara Collier on 01525 221401
1st & 3rd Tuesday	Dunstable & District Orbit (social and charitable) Club meet at Dunstable Rugby Club at 8pm. For details contact 01525 222441 or 01582 755147
1st Saturday	St. Mary's church, Eaton Bray Coffee Morning & Plant Sale, 10am - 12 noon
1st Sunday	May to September, St Mary's Church, Edlesborough Open Day, 2-5pm
2nd & 4th Tuesday	TOTS, St Mary's, Eaton Bray, 2pm
2nd Tuesday	Dunstable & District Local History Society meeting, 7.45pm, Methodist Church Hall, Dunstable (opposite Wilkinson)
2nd Tuesday	Edlesborough W.I. Meeting, 7.30 pm, Edlesborough Memorial Hall
2nd Wednesday	St.Mary's Ladies Guild, 2pm, St.Mary's, Eaton Bray
2nd Wednesday	Eaton Bray & Edlesborough Lions Club, 7.30pm, The Coffee Tavern
2nd Thursday	CAMEO Coffee, tea & chat, 10am-12noon, Edlesborough Methodist Church
2nd Saturday	Workshops Dynamic Yoga 9.30-11am £10 Eaton Bray Coffee Tavern Keira 07936 693696
3rd Thursday	Edlesborough Parish Council Meeting, 7.30pm, Memorial Hall
3rd Sunday	Lunch club 11.30 to 2.00pm, Eaton Bray Village Hall, Chris Hewitt 222288
Last Saturday	Coffee Morning, 10-12 noon, Edlesborough Methodist Church

Other Regular Events

8th	Beds Area Narrow Gauge Model Railway Club Meeting, 11.30am-4.30pm, Eaton Bray Village Hall
9th	ELF walk from Eaton Bray church 10am
13th	Leukemia Research Coffee Morning, 2 Dunstable Road, Dagnall 10.30 am. All welcome.
17th	Dagnall Over Sixties Lunch and Quiz, 1pm, at The Red Lion in Dagnall

One Off/Annual/Irregular Events

7th	Friends of Edlesborough School 1980s Quiz Night, 7:30, Edlesborough School Hall, £10 per person includes Thai curry. Tickets from school office
8th	Highland Fling, 6pm, Eaton Bray Village Hall, Includes supper, tea and coffee. Tickets 01525 222283
12th	ELF Lunch Out
13th	Cali-R Soul Night, 8pm, United Services Club, 160 High Street South, Dunstable, Tickets: 01582 475607
28th	Emilie's Quiz including food, 7pm, Eaton Bray Village Hall, £9 per head, Teams of 8. Tickets: mydonate.bt.com/fundraisers/emiliesanders

Village Notices

Brian Shields

3.8.1937 to 6.12.2014

Brenda and Michael would like to thank everyone for their kindness and support after the sudden death of Brian. He was a much loved husband, dad and grandad. We have been overwhelmed by the messages of sympathy, cards, visits and concern for us all. Thank you to everyone who joined us for the celebration of Brian's life on Tuesday 16th December.

The total raised so far for The British Heart Foundation is £500. We thank everyone for their generous donations.

✍️ Brenda Shields



**EDaN Community
Transport**

Peter Williams: 01442 842506

FOR SALE

Electric Reclining Armchair

Welcome to view

Over £500 new

Sell for £50

Need the space

Tel: 01525 221733



Eaton Bray Development
See pages 20-23 for
details of the proposed
development of 150 houses
in Eaton Bray

**STOP EDLESBOROUGH
NEW TOWN 2 – ‘SENT2’**

In the December issue of FOCUS, we unfortunately quoted an incorrect email address – for which the group would like to apologise.

Should you wish to contact the group with your views or comments please do using either:

**StopEdlesboroughNewTown@gmail.
com or via FACEBOOK**

Tap Dancing Class

In Kensworth

Tuesday evenings

7.30 – 8.30 **beginners**

8.00 – 9.00 with some experience

Good fun and great exercise

For details, phone Jenny

01582 872650

FOR SALE

2 Cybex Solution X Car Seats

For ages from 4 - 12 years, weight
15-36 kg, height up to 150cm

Good condition with instructions

Dark blue with light blue trim

Backs can be removed to use as
booster seats

£10 each - Tel: 01525 221806

Open Gardens 2015

Since 2006, one of the social highlights of the year in our villages has been our Open Gardens event. We had seven wonderful years enjoying the gardens that were opened by willing gardeners and both the gardeners and visitors enjoyed some wonderful days. This year's event will be 6 weeks later than usual (on 26th July) so people who have previously opened their gardens may wish to show off an entirely fresh colour scheme and others who have not opened their gardens before may feel their garden is more beautiful in July we

**Please would you open
your garden?
Contact
Kay - 222849 or
Gordon - 220136**

need to make a special effort to ensure this great day out is not lost to the annual calendar. We already have a few offers of gardens but we do need some more.

Now is the time to offer to open your garden. It can be large or small – all gardens have something to offer visitors and past experience suggests that those who open their gardens are delighted by the positive feedback they receive. Do please think about it, then get in touch with either Kay Griffiths (222849) or Gordon Gray (220136).

St Mary's Village Carnival 2015

It's time to start thinking about this year's Carnival on 4 July 2015 with the theme 'The Sea'. The principle charities to be supported this year will be St Mary's Fabric Fund, 'Joss Searchlight' and 'Medical detection dogs'.



The Sea
4th July 2015

An appeal to all local businesses, businessmen and women.

Last year we had a wonderful example from Janes of how the Carnival can be used to promote your business. As an organising committee we will do our best to promote your businesses to the crowds who attend the Carnival if you give us a chance to do so.

How can you get involved?

Please consider one or more of the following some of which may be tax deductible:

- Advertise in the Carnival Programme and / or the arena – contact Pauline Glen on 229400
- Donate a prize relating to your business

to the Grand Draw

- Donate an item relating to your business for the Silent Auction
- Take part in the

procession

• Make a cash donation to the Carnival
If you would like your business to be involved in any of the above please contact Gordon Gray on 220136 or via the carnival website - www.stmarysvillagecarnival.com.

St Mary's 100 Club

Congratulations to the following winners:

January 2015

1st Prize – Victor Courtice

2nd Prize – Rachel McVeigh

3rd Prize – Martin Hayden

If you would like to join the 100 Club please collect a form from www.stmaryseatonbray.org.uk/Groups/100-club or from St Mary's Church, Eaton Bray.



800th Year Anniversary

Coming soon to a village near you!

The church of St Mary the Virgin, Eaton Bray has stood in the centre of the village for centuries. Some years ago Malcolm Grant, the church's previous vicar, carried out research into the history of St Mary's and established that the earliest reference to the church in Eaton Bray relates to a chaplain named Nicholas in 1219 who was given the vicarage. This means that, to the best of our knowledge, St Mary's will be 800 years old in the year 2019 – that's just four years away.

This is a significant anniversary and worthy of celebration both within the church and the village. Parishioners have already suggested a range of possible activities that celebrate both church and village life and which could all involve people from our villages. Ideas include:

Possible village activities

- Invitation to royalty
- Build a 13th century peasant's house
- Models of the village over 800 years
- Carnation cuttings
- Invitation to TV / radio programmes
- Recipe book

Possible church activities

- Festival & Celebration Services

- Commission new artwork for church
- Design & make set of celebration robes & altar frontal
- Son et Lumière
- Musical events covering 800 years

You may have your own ideas of how we could celebrate this milestone in the village's history. More importantly, you may like to offer to help. At this stage we are keen to hear from people willing to serve on a Steering Committee and people who have skills that might help in any of the above.

If you are interested in helping please get in touch with either Catherine Hayden (220527) or Gordon Gray (220136).



A packed church at St Mary's for the Candle Service on Christmas Eve

Services at St Mary's Church

SUNDAYS : **8.00am** HOLY COMMUNION
 10.00am PARISH SUNG HOLY COMMUNION

On Third Sunday of each month:

10.00am – WORSHIP FOR EVERYONE a shorter, less formal service for families. (For anyone wishing to attend a service where Holy Communion is offered, there is a Family Communion at 10.30am at All Saints' Church, Dagnall, where visitors are assured of a warm welcome).

WEEK-DAYS:

Tuesday: 2.00pm TOTS (Tots on Tuesdays) (2nd & 4th Tuesdays)
Wednesday: 10.00am Holy Communion

EVERYONE WELCOME AT THESE SERVICES

A Letter from Rev'd Coralie

Vicar: Coralie McCluskey

The Vicarage, 11 High Street, Eaton Bray - Tel: 01525 220261

Honorary Assistant Priest: Revd John Heffer

Reader: Gordon Gray (220136)

Church Warden: Catherine Hayden (220527)

Email: admin@stmaryseatonbray.org.uk

www.stmaryseatonbray.org.uk



Making your lifestyle count: an environmental challenge

Lent begins on Wednesday 18th February. This year I'm not going to suggest a book or prolonged study but you might like to consider the following:

Whether we live in Dagnall, Northall, Edlesborough or Eaton Bray we have to admit that we live in a beautiful setting with the glory of creation all around us. Often we take this for granted but it may not always be the same. Many once beautiful parts of the world have been destroyed. Environmental damage may seem far removed from us but unless we all continue to act responsibly we may suffer too, this Lent let's *Think globally and act locally*.

Each week for the six weeks of Lent why not take on one or two actions from the following environmental action lists. You may just want to concentrate on the same actions for the whole period, that's fine because everything that we do for the environment, however small, becomes a vital contribution and a witness to our desire to protect the planet for future generations. Try it and see.

Week 1 – use of transport

- Walk or cycle locally if at all possible
- Car share wherever possible – school run
- Cut your car journeys by X%

Week 2 – use of water (I know we have a lot of rain but!)

- Mend dripping taps
- Turn off the tap while brushing teeth
- Have a shower rather than a bath
- Only run the dishwasher when it's full
- Use an economy setting on the washing machine
- Collect rainwater for use in the garden (it's much better for indoor plants too)

Week 3 – use of insulation (it will still be chilly and dark in February)

- Keep your windows and doors closed
- Hang clothes to dry instead of using the tumble dryer
- Use eco light bulbs
- Turn down the central heating and wear warmer clothes
- Switch your energy provider to one that uses renewable energy sources

Weeks 4, 5 and 6 follow in March, along with times for the Easter services and activities.

Suggestions for ways of saving energy come from *Eggs and Ashes* by Ruth Burgess & Chris Polhill.

South Beds Dial-a-Ride is Luton's "dial-a-ride"

In recent weeks, an "organisation" has been approaching elderly people in Luton offering a new "dial-a-ride" service.

- "The organisation" has referred to themselves as "dial-a-ride"
- "The organisation" has telephoned elderly people at home to offer them the new "dial-a-ride" service
- "The organisation" has told some passengers that there is a new telephone number for "dial-a-ride" which they should now call
- "The organisation" has turned up at people's homes, uninvited, to try to transport people who already had established bookings with an alternative transport provider
- "The organisation" has caused more confusion amongst those elderly and vulnerable people who may already be somewhat confused.
- "The organisation" has taken one passenger to a destination and charged them a fare, for a journey which the passenger had previously enjoyed totally free of charge under a long standing arrangement funded by a major Luton based elderly person's charity. This "organisation" did not then return at the agreed time to take "their" passenger home even though the return fare had been paid in advance.

SOUTH BEDS DIAL-A-RIDE would like to distance itself totally from "the organisation" and make several points absolutely clear.

SOUTH BEDS DIAL-A-RIDE still has the same operating name of **SOUTH BEDS DIAL-A-RIDE**, as it has for the past 28 years it has served the elderly and disabled in Luton who find it difficult to use public transport.

SOUTH BEDS DIAL-A-RIDE has **SOUTH BEDS DIAL-A-RIDE** in large blue letters on the side of its white buses, as well as the phone number **01525 220044**.

SOUTH BEDS DIAL-A-RIDE can still be contacted on **01525 220044**, the same telephone number it has used for the past 10 years.

SOUTH BEDS DIAL-A-RIDE's telephone number for has NOT changed.

SOUTH BEDS DIAL-A-RIDE is still very much in business, in Luton, Dunstable, Houghton Regis and surrounding villages.

If you are elderly or disabled, or a family member of someone who is, and are in any doubt whatsoever, please contact **SOUTH BEDS DIAL-A-RIDE** on **01525 220044**. **SOUTH BEDS DIAL-A-RIDE** welcomes your calls, as it has for the past 28 years.

London Luton Airport

With an increase in aircraft in the area and in particular when the wind is from the East, we are getting some aircraft flying directly over the village to join the flight path into the airport. If you are disturbed by the traffic flying over the village, there is a complaints hotline number: 01582395382. This is an airport number where you can register your concerns. It is important to do this if we are to reduce these disturbances over our village.

If you need to complain about Heathrow flight noise the number is 0800 344 844. Email: noise_complaints@heathrow.com





UNICORN WINDOWS LTD

“WHERE QUALITY & SERVICE ARE NOT A MYTH”

www.unicornwindows.co.uk

Tel: 01525 854272



Unit 3 Youngs Industrial Estate, Stanbridge Road, Leighton Buzzard

comput@mation

computer support & services

Computer Support for Business & Home

Problem Solving:

Virus & Spyware Removal
Internet & Email Assistance
Fault Diagnostics
Repairs & Upgrades
Slow Running PC's

Sales:

Desktops, Laptops & Tablets
Printers & Peripherals
Software

Services:

PC, Mac & Linux Support
Wired & Wireless Networks
Data Recovery
Install & Set-up
Health Checks

On-site Visits:
Office Hours & Evenings
by appointment

For friendly advice call John Wallace: 07968 536068 or 01525 261381
Email: john@computamtion.co.uk
Web: www.computamtion.co.uk

Computamtion Services Ltd - Est.1999 with over 25 years experience
9a Lower Way, Great Brickhill, Buckinghamshire, MK17 9AG

Carpet & Upholstery Cleaning

Professional & Local

All work guaranteed - not happy, don't pay

**Powerful equipment means drier much
quicker than other methods**

**100% Guaranteed no chemicals left in carpet
when dry therefore will not easily resoil
& perfectly safe for children & pets**

Recommendations account for 90% of my work

Absolutely no hard sell

Telephone Colin for a Free Quote

DEEP-CLEAN

01525 851 811

www.deep-cleaners.co.uk

Email: colin@deep-cleaners.co.uk

EDLESBOROUGH SURGERY

11 Cow Lane Edlesborough

Enquiries - 01525 221630 Appointments - 01525 220333

www.edlesboroughsurgery.co.uk

Dr J R Bell, Dr Heather Counsell

Dr Tisha Patel

Dr Stephanie Johnston, Dr Kirsten Riemer

Friendly village Practice offering a wide range of health services including coils/implants, minor surgery, travel advice, in house blood tests, on-line appointments and repeat prescription ordering. Four Nurse Practitioners offering acute clinics with same day appointments. Also, midwife, health visitors in attendance. Local District Nurse Service.

Long established training Practice with a rotation of qualified doctors.

EDLESBOROUGH PHARMACY

01525 223181

Pharmacist – Mitul Patel

Friendly reliable professional service at the pharmacy

All doctors/dentists/veterinary and hospital prescriptions dispensed

Professional advice always available

Herbal/Homeopathic products

Special Orders on request

Stagecoach Theatre Arts
 An hour to sing, an hour to dance, an hour to act... A lifetime to Perform!

Please contact the Principal, Wendy Ashman
01442 823181
 leightonbuzzard@stagecoach.co.uk
 www.stagecoach.co.uk/leightonbuzzard
 www.facebook.com/stagecoachleightonbuzzard



SING! DANCE! ACT NOW!



Theatre Arts Schools
Stagecoach



MMH
Plumbing & Bathrooms



City & Guilds
 Qualified

- Full Bathrooms Installations inc Design, Supply, Tiling
- All General Plumbing work from : Leaking Showers
 Dripping Taps • Toilets not flushing • Radiators • Drains

Call Mark for a **FREE** no obligation quote **01525 220994**
 All work fully insured and guaranteed. **07842 653832**

Barry Cato
Motor Repairs

— Est. 1981 —

Servicing, repairs and MOT's arranged
Workshop at:
 r/o Norfolk House Farm, Harling Road
 Eaton Bray, Dunstable, Beds, LU6 1QY
Tel: 01525 221681 (workshop)
07836 650015 (mobile)

30 Years Experience
Domestic & Commercial Security



Burglar Alarms
Redcare Monitored Systems
Intercoms
CCTV
Access Systems
Locks



CERTIFICATE NO. NAC/G/2113

Quality Installations – Competitive Prices
Insurance Approved **Free Surveys**

AAA SECURITY

01525 378222

Email: sales@aaasecurity.co.uk

www.aaasecurity.co.uk





Local family run business - Not a franchise

All chemicals used are Eco-friendly, non-toxic, non caustic and non allergenic
All work guaranteed and fully insured

All products are Child, Pet and Pregnant Safe

- Ovens & Hobs
- Extractor Hoods
- Microwave Ovens
- Agas
- Fridges
- Carpets
- Rugs
- Upholstery
- BBQs
- Freezers



☎ 01525 22 19 22 or 0800 122 3393

🌐 www.ecotechovenandcarpetcleaning.co.uk

@ info@ecotechovencleaning.co.uk

Dominic Woolcott

Painter & Decorator



- Internal & External
- Plastering & Coving
- Insurance Work
- 20 Years Experience
- Competitive Rates

**For a professional job call:
01525 229682 or 07747 042879**

P. DYER ELECTRICAL

For all your Electrical & Testing & Inspection needs

- Re-wires
- Testing & Inspection
- Security Systems/Lighting
- LED & Low Energy Lighting
- Decorative Lighting
- PAT Testing
- Fuse Boards
- Fault Finding/Repairs

Fully insured, Part P registered, all work guaranteed.
Fast, friendly, reliable, local electrician. For a free,
no-obligation estimate, call Paul on:



Tel: 01525 222109
Mobile: 07850 682815



David John Harris

Green Fingers



(Established 1992)

All Fencing Work • All Gates • Paving • Patios
Driveways • Shingle • Hedge Setting and Cutting
Grass Cutting • Turfing Specialist • Exterior
Painting Service • Sheds Small Building Work
Trees & Shrubs Supplied

Tel/Fax: 01525 221745
Mobile: 07889 143713



**GYM &
TONIC**

**WANT TO GET FIT, HAVE A
HEALTHIER LIFESTYLE & IMPROVE
THE WAY YOU LOOK & FEEL?**

The following can be provided in our
Gym in Edlesborough or in your home

- * **A Health & Fitness Consultation** *
- * **Personal Training** * **Massage** *

Ruth Anderson Dip. PT & ST, Member of: Inst of Sports
Therapists & Register of Nutritional Therapists

Tel:01525 223074 Mob:07812 163979

WASHING MACHINE REPAIRS

ALSO
DISHWASHERS, TUMBLE DRIERS,
AND ELECTRIC COOKERS



Call

ANDERSON D.R.S.

01582 665764

www.andersondrs.co.uk

SALES AND RENTALS AVAILABLE



For all your painting & decorating requirements
 Domestic and Commercial
 call Max for a free estimate with no obligation
maxbro@btinternet.com

Abbott Flooring

- Carpet & Vinyl
- Laminate & wood flooring
- Domestic & commercial
- Supply, fitting & adaptations
- Next day delivery
- All work guaranteed
- Free no obligation quotes
- No job to small

We provide a friendly, professional service at very competitive prices. If you require us to supply & fit or you just need some flooring fitted then give us a call.

Telephone 01525 220249
 Mobile 07958 244536



High Street Hair

66 High Street , Eaton Bray, Nr Dunstable, Beds. LU6 2DP

01525 221252

www.highstreethair.co.uk

Monday	Closed
Tuesday	9 - 6
Wednesday	9 - 6
Thursday	9 - 8
Friday	9 - 8
Saturday	9 - 5

A Professional modern salon, Providing
 Quality hair & nails services for the whole family.



JESSICA



TIGI®

think car, think...

smartAUTOGROUP



Established locally for over 10 years

Car servicing, M.O.T & repairs
Bodywork & maintenance
Mobile car body repairs
Accident & vandalism damage
Alloy wheels, scratches, dents, stone chips & scuffs
Fully equipped bodyshop & workshop
Complete diagnostic equipment
Dealer trained master technicians
Genuine parts



Competitive pricing – up to 50% cheaper than main dealers!

£10 off with this advert

Work Guaranteed • Free Vehicle Collection & Delivery • Customer Pick-Up & Drop-Off

Call us on **01582 664772** or visit www.smartautogroup.co.uk

Units 17 & 18a, Icknield Way Farm, Tring Road, Eaton Bray, Dunstable LU6 2JX



Lee Hutt

Heating & Plumbing Services

Bathrooms, Design & Installation

Tiling ♦ Heating ♦ Powerflushing ♦ Taps ♦ Leaks

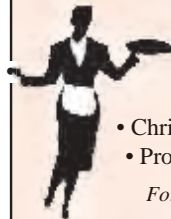
Call Outs ♦ Free Estimates Given



01525 222145



07971 559185



Patricia's Cuisine

Catering For All Occasions

- Buffets, Dinners •
- Christenings, Weddings, Funerals •
- Promotions & Business Lunches •

For Enquiries & Menu

Meadside Farm, 104 High Street,
Eaton Bray, Bedfordshire, LU6 2DP

Telephone: 01525 222174

P.J.BRINKLOW

Electrical Contractor

01525 220469

07860 781330

**43 Peblemoor
Edlesborough**

pinstripes signs
pinstripes graphics
pinstripes clothing

01525 220485
07973 167779

BUSINESS CARDS

www.pinstripesigns.co.uk

find us on facebook
pinstripes signs graphics clothing

Mark Janes Contracts

**Felt Roofing - All Roofing Repairs
and Property Maintenance**

FREE ESTIMATES



t: 01442 877528

m: 07841 343470

e: mark.janes3@btinternet.com

Established 25 years

*Approved Contractor
for Local Authorities*

For all your building needs look no further



BRIGGS



BUILDING & CARPENTRY SERVICES

Established 1981

For a professional, friendly service call:

(01525) 221767

(07970) 214439

Domestic & Commercial

Extensions
Renovations
Conversions
Alterations

New Builds
Roof Repairs
Kitchens
Bathrooms

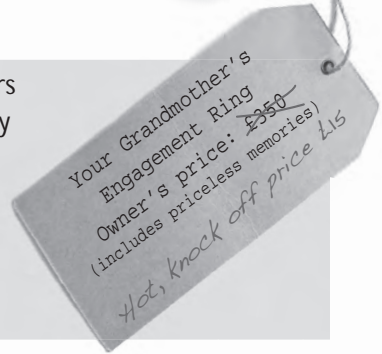
Patios
Driveways
Decking
Garden Walls

Mini Digger, Skip Loader and Dumper Hire

All Work Guaranteed

Free Estimates

Your voice can make a difference



Nobody should have to live in fear of burglars and there is a simple, safe and effective way you can help stop criminals ruining more lives by passing on information about crime anonymously to the Crimestoppers 24:7 hotline 0800 555 111 or at www.crimestoppers-uk.org.

Crimestoppers is a charity and not part of the police. When you call 0800 555 111:

- your call will not be traced and you won't be asked for your name or address
- you will always remain completely anonymous, so there is no risk to you
- if your information leads to an arrest and charge you may qualify for a cash reward of up to £1,000 which will be paid out anonymously, so at no point will your identity be revealed.

Crimestoppers really does work. In the 26 years since the charity was launched more than 130,000 criminals have been arrested and charged. That means around 1 in 10 of the calls to Crimestoppers results in an arrest without one caller ever being identified, but we can't do anything if you don't call.

Being burgled can have lasting consequences and destroy a sense of well-being in your own home. So be vigilant and make a difference by telling us if you:

- know or have good reason to suspect who is breaking into local homes
- notice the type, colour and/or number plate of a vehicle you suspect was used in a burglary
- believe someone is selling stolen property
- can tell us where stolen property is located or being sold

Call Crimestoppers anonymously on 0800 555 111 or go to www.crimestoppers-uk.org.

Help make your community safer today.



Eaton Bray Parish Council

PLANNING APPLICATION CB/14/04055/OUT - LAND OFF TOTTERNHOE RD, EATON BRAY/OUTLINE PLANNING FOR 150 DWELLINGS

Proposed Development in Eaton Bray: Formal response from Eaton Bray Parish Council

In response to the proposed development submitted by Central Bedfordshire Council (CBC) to build up to 150 houses on the land off Totternhoe Road, Eaton Bray Parish Council reviewed all submitted documentation relating to the planning application and have formally agreed to **object to the proposal**.

A précis of the letter submitted to CBC and the reasons why we believe such a development would be disastrous for the village is below. To read the full version of the letter, please visit: www.ebpc.co.uk. After thorough consideration of the proposal it is for the following reasons with which Eaton Bray Parish Council object to the planning application:

1. The land of the proposed development is designated Green Belt and that, according to Government guidelines, can only be developed on in 'exceptional circumstances' and we do not consider these are exceptional circumstances.
2. There has been no identified need for a development of such magnitude in Eaton Bray and the surrounding areas. The recent affordable housing survey identified an interest for up to 12 small properties of the 'affordable' housing designation.
3. The area identified suffers heavily from flooding that is not accurately reflected in the environment agency's flood plain area map. A recent correspondence from Anglian Water and the Environment Agency have confirmed they do not recommend or

- support the development in this area.
4. The existing village road network could not support the increase the additional traffic which would be in the region of 300+ vehicles. The roads are narrow and already suffer from HGV traffic and speeding issues.
5. Based on the number of properties and their predicted car usage the proposed development at The Rye/Totternhoe Road contravenes CBC's own parking policy.
6. The Parish Council Highways Working Group have already identified that the road network is already heavily under strain with HGV and 'rat run' traffic. The main carriageway through the village is breaking up and in many places and the carriageway is simply not wide enough. This, in addition to both the construction traffic and the additional resident vehicles, would mean that it is only a matter of time before a serious and possible fatal accident were to occur.
7. The public transport statement for the development estimates that 50% of the residents of the development would use public transport and walk to/from the bus stops. However, the current level of public transport provision in Eaton Bray simply does not exist. Additionally, the Transport statement is inaccurate and we suggest that the TRICS data bares no correlation to our current rural public transport service.
8. The proposed site location is on dangerous junction, particularly at the weekends when the Rye playing field is heavily used by children playing football. With the addition

of an additional 300+ cars using the junction this would increase the level of congestion and danger.

9. The village's drainage and sewer system is already under threat. The past few years have seen unprecedented levels of flooding in that exact area of the proposed development with some residents of Totternhoe Road being flooded out of their homes for many months owing to the proximity to the flood plain region. Inadequate drainage and sewerage mean that without significant investment in the village's entire drain and sewer system raw sewerage would make its way out and into the open. This view is supported by Anglian Water.
10. There is only one small junior school in the village and this is already also at capacity and would not support the increase in the number of young children in the area. In addition, correspondence received from the Head Teacher of Edlesborough School has confirmed that they would not accept any additional volume of intake from a proposed development given their already high-usage.
11. There is one, small shop that would struggle to cope with an increase in the number of residents and the next nearest shops of any size would require those to use their car to travel there.
12. The Section 106 contributions are wholly inadequate for the reasons stated thus far.
13. The proposed size of the development would be one that increases our rural village by 10% +/- and this would have a significant and damaging impact on the village's character.
14. Given CBC's ownership of the land, we would seek their (CBC) assurance

that, clearly given the uplift in the value that CBC would receive from the scale of the development, this is not merely a commercial development. The application is unnecessary and overdevelopment in an area that has no demand for the property.

Finally, it is also worth noting that the supporting scheme documents of the proposal contain many inaccuracies, such as Eaton Bray being placed in Buckinghamshire and this, in our opinion, supports the fact that this is simply an ill-thought-out planning application that is not needed or wanted by any of the 4,200+ residents of Eaton Bray.

To reiterate, it is for the above reasons, but not limited to, that we object to the proposed large scale development in Eaton Bray.

We urge that if residents of Eaton Bray (and surrounding villages) wish to object to the proposed development they write to the case officer, details below, providing your reasons for objection. It is important that you send a physical letter or email as it is not enough to just make a comment on the CBC website.

Write your letter of objection to:

**Vicki Davies, Planning Officer
Central Bedfordshire Council
Priory House, Monks Walk
Chicksands
Shefford
Bedfordshire SG17 5TQ**

Using the reference: **Planning application
CB/14/04055/OUT, Land off Totternhoe
Road, Eaton Bray, Dunstable Beds LU6
2BD**

Email: victoria.davies@centralbedfordshire.gov.uk

✉ Heidi Head, Parish Clerk & RFO

Email: clerk@ebpc.co.uk - Telephone/Fax:

01525 221464 - Website: www.ebpc.co.uk

Letter to the Editor...



Dear Editor,

The following is a copy of a letter I have sent to Central Beds objecting to the proposed development of 150 houses in Eaton Bray.

7th January 2015

Ms Victoria Davies
Central Bedfordshire Council
Priory House
Monks Walk
Chicksands
Shefford SG175TQ

Dear Ms Davies
CB/14/04055/OUT – Land off Totternhoe Road

I wish to object to the above planning application on the following grounds:-

1. The potential development of 150+ houses represents a population increase of over 400, this is unsustainable.
2. Whilst CBC has no interest in development in ADVC, the fact remains that ADVC have approved building of 40 houses and received an application for a further 60 in the adjoining village of Edlesborough which could represent a substantial increase in the population.
3. Together these developments place an **INTOLERABLE PRESSURE ON SERVICES** as both communities are served by the same **DOCTOR, POST OFFICE, SCHOOLS AND OTHER AMENITIES** with limited public transport.

A POTENTIAL INCREASE OF 500 PEOPLE – NO NO NO

4. The Design & Access Statement – Site Description:-

- a) The A41 is 15 miles from Eaton Bray
 - b) The A416 does not exist.
 - c) Aylesbury lies to the WEST not the EAST of Eaton Bray
- If this is an example of the survey of the area – what does the future hold for our parish.

5. You are talking about building on Green Belt.

Building on a flood meadow.

An additional 200+ cars.

No employment in the parish for the residents

No additional capacity within the village school, and we already have children coming to Eaton Bray school from Leighton Buzzard due to the over development in their town.

No commitment to affordable housing as discussed in April 2014.

YOU REPRESENT US THEN PLEASE PROTECT US

Yours Sincerely

Mr M. Grundy

Letter to the Editor...



Dear Editors

I would like to make all villagers aware of a large housing development which is being proposed by Amberville property company on land owned by Great Green Farm and Old Ley farm in The Rye. On a particularly dangerous junction where two serious accidents have happened in the past few months they intend putting two extra access roads.

The sewerage system is unable to cope with the present number of houses and has serious problems from reflux which means that our drains overflow. Anglia Water will not enlarge the sewerage system so we go for long periods unable to use baths, toilets, washing machines, etc. Several of our neighbours are in the same position.

The proposed fields have traditionally flooded and a natural pond will be filled in, this will seriously affect us as when our house was flooded 12 years ago it took 7 months to dry out and we have had to pay for pumps to be installed in our drive, they are in constant use whenever it rains. More houses will be affected if this project goes ahead.

The village cannot cope with 150 extra houses as we do not have the infrastructure required, and it will not stop there as on the plans access has been left for future development, this is designated GREEN BELT, if this goes ahead where will it stop!!!

Catherine Gadd



Plan of the proposed development

Edlesborough Parish Council News

Including Edlesborough, Dagnall and Northall

Councillor Vacancy

The Council currently has a vacancy for a new Councillor to represent Edlesborough. Any person wishing to know more about the role should contact the Clerk (details below).

Parking in the Parish

Thames Valley Police and the Parish Council have received many complaints about inconsiderate parking in the Parish. The Parish Council asks that all drivers consider other road users and pedestrians when parking in the Parish. Please ensure there is always sufficient room for emergency vehicles to pass on the road and for pedestrians, pushchairs, wheelchairs and Motability vehicles to pass on the pavement.



Please DO NOT park on the white lines and NO PARKING markings around the village.

McCann Homes & DLP Planning

Towards the end of 2014 McCann Homes submitted a scoping opinion enquiry to AVDC to establish whether or not an environmental impact assessment will be required for the land between Chiltern Avenue and Kingsmead. They have been advised that this will not be necessary.

More information can be found online at <https://publicaccess.aylesburyvaledc.gov.uk/online-applications/applicationDetails.do?activeTab=documents&keyVal=NGG UQ5CL05600>

The Parish Council hopes that Parishioners attended the Public Meeting held by DLP Planning in January. As and when more information is available it will be shared through the Parish Council website, Facebook page and FOCUS reports. In the meantime Parishioners can look online

at <http://www.aylesburyvaledc.gov.uk/planning---building/current-planning-applications-and-property-history/> for further information.

7.5 Tonne Exclusion Zone

The Totternhoe application for the 7.5 Tonne Exclusion Zone has been withdrawn. A new joint application between Eaton Bray and Totternhoe will be submitted. Consideration will need to be given to the location of the signs as this will impact on Edlesborough and Northall in particular.

New LED Street Light in Main Road North, Dagnall

The new steel column and light is now installed and working between the roundabout and The Red Lion pub. The light is the LED type which is planned to be used in due course through out the parish. The light is fitted with a special lens to project as much light as possible along the pavement. The Council would welcome any feedback from residents.

Please remember to report any faulty lights to the Parish Clerk not AVDC or BucksCC.

Allotments

We currently have allotments available at our Cow Lane and Northall sites. If you would like to take on an allotment please contact the Parish Clerk for more information.

Edlesborough Parish Council Meeting

This next meeting will be held at Edlesborough Memorial Hall on Thursday 19th February 2015, commencing at 7:30pm. Minutes of previous meetings can be found on the website www.edlesborough-pc.gov.uk

Contact Information

Clerk to Edlesborough Parish Council:

Clerk: Penny Pataky 01525 229358

Email: clerk@edlesborough-pc.gov.uk

Manager of Edlesborough Memorial Hall,
Pavilion, Playground & Green:
Penny Pataky 01525 229358
Email: manager@edlesborough-pc.gov.uk
Responsible Finance Officer/Planning to
Edlesborough Parish Council:
Lin Sargeant: 01525 220859

Email: rfo@edlesborough-pc.gov.uk
Website:
www.edlesborough-pc.gov.uk
Facebook:
[www.facebook.com/
EDANParishCouncil](http://www.facebook.com/EDANParishCouncil)



Healthy Bones and Pilates

The best time to build healthy bones is when you are young - exercises such as jumping and skipping in your teenage years can help promote denser bones and prevent fractures when you are older. (So get your children/grandchildren off their PlayStations and get moving!)

The bad news - our bone density continues to grow until our mid 20s, however, after the age of 35, and following the menopause in women, the pattern changes. 1 in 3 women and 1 in 5 men over the age of 50 will develop osteopenic (loss of bone) fractures.

The good news - although ideally we would have looked after our bones in our teenage years, we can make a change for the better:

1. **Eat a varied diet rich in calcium** - dairy products tofu and spinach are all good.
2. **Be active** - load bearing exercise such as walking, running, golf or tennis can help.
3. **Reduce your caffeine and salt and stop smoking** as all of these can interfere with the absorption of calcium in our bodies.
4. **Take up Pilates**, the mind-body conditioning programme, can be used to strengthen your core (back and tummy) muscles and also be adapted to do in standing to help 'load' the bones. Pilates can also help with balance and transferring weight to help avoid falls and potential fractures.

Choose a fully qualified and registered Pilates instructor – the APPI Pilates instructors at St Judes are also Chartered Physiotherapists who carry out clinical rehab

Pilates – participants in our small group classes and 1:1 sessions are fully assessed before starting an exercise programme specific to their needs.



If you are worried about your bone density speak to your GP or one of our Chartered Physiotherapists will be happy to help.

Tips by Moira D'Arcy, Chartered Physiotherapist & APPI Pilates Instructor, & President of the Osteoporosis Support Group Bedfordshire.



**St Judes Clinic,
26 Lake Street
Leighton Buzzard
LU7 1RX**

☎ 01525 377751

**📧 www.stjudesclinic.com
enquiries@stjudesclinic.com**

Eaton Bray Cricket Club		
100 Club Winners		
December 2014		
£25	Roy Michel	No.27
£10	Ian Jones	No.56
January 2015		
£25	E.B.C.C.	No.68
£10	Richard Osborn	No.80
Eaton Bray Cricket Club is kindly sponsored by Meadow Marquees, Houghton Insurance & Gastex Services		

Appledown's Rescue Dog of the Month



This is Samwell Tarly! He is about a year old and sadly he is completely deaf and cannot be let off the lead. However, he is a very bright little chap and could learn sign language (we can offer help and advice). He is energetic and full of fun and will need a family with time to devote to him. He could live happily with a female dog but he can be food possessive. Samwell would love an active family life and will make a very rewarding pet. He cannot be rehomed in Luton.

If you feel you could offer Samwell, or

any of our other dogs, a loving and secure home please call in at the kennels any day between 10 a.m. and 4 p.m. Our staff will be happy to offer advice and information. We have restrictions on rehoming dogs to families with children under 7 years of age, so please ask for details.

Appledown Rescue and Rehoming Kennels, Harling Road, Eaton Bray, Beds LU6 1QY.

Call 01525 220383 or e-mail: appledown.kennels@btinternet.com

Visit our Website:

www.appledownrescue.co.uk

Reg Charity No. 1116848

Edlesborough W.I.



At our recent meeting we heard a report from Pamela Richardson on the Ivinghoe W.I. party that she and Chris Yorke had attended. It would appear a good time was enjoyed by all.

Our speaker that evening was Alan Jones, a vet who specialises in the treatment of birds. Aided by slides, he gave us a really interesting report. He pointed out that birds differ from breed to breed, and have to be treated accordingly. Alan has worked in other countries, as well as Britain, and his slides included photos of really exotic birds – very beautiful. He obviously loves his work, and his talk was really informative on the life and veterinary treatment of such a variety of these fascinating birds. Thank you, Alan.

In between our two latest meetings we held a coffee morning at the home of Jane Jones. As usual, we had a great get together with members and other friends. We raised £195, and thank Jane for her hospitality.

At our last meeting of 2014 Elizabeth stood in for Phrena, our President. This was the occasion of both our A.G.M. and Christmas

party, and the usual annual reports were given and adopted. As five of us, including Phrena, are standing down from the committee, Lynne Hutton (a W.I. County Advisor) attended to supervise the appointment of a new president. Jenny Foale was elected, and will head our new committee for 2015. Thank you, Jenny and all who have taken on committee tasks.

Now was the time to enjoy a very welcome supper prepared by Ann with help in the kitchen. Thank you, ladies. Our old friends, Les and Dave, were with us again to provide the music we all love. They are a very popular duo, and we thank them for playing our old favourites. Also providing entertainment were Sue, Diane and Megan, with extremely amusing monologues. This was followed by the distribution of gifts, and the lucky raffle winners receiving the great prizes.

Altogether, it was such a lovely ending to our W.I. year, and we all look forward to 2015. A Happy New Year to everyone.

✍️ Val Harris

Thinking of Selling or Letting?



Our success is built on our reputation of excellent customer service.



www.christopherpallet.com



Offices in Edlesborough, Wendover & Aylesbury

65 Moor End, Edlesborough, Bucks, LU6 2HN ♦ T 01525 222333 ♦ F 01525 222042 ♦ E edlesborough@christopherpallet.com

IRON OUT

Complete Laundry Service
 Shirt Service
 Duvet Cleaning
 Ironing
 Free collection & delivery from home or office

01582 667332 / 07885 320042
 Email: ironout@aol.com

D NICHOLSON PLUMBING REPAIRS and INSTALLATIONS

NO JOB TOO SMALL

- Emergencies • Free Estimates
- No call out charges

Dave Nicholson

MOBILE: 07976 975604 **City & Guilds Qualified**
HOME: 01525 872335

R.J.O'CONNELL BUILDING SERVICES

EXTENSIONS, PATIOS,
 DRIVEWAYS, ROOF REPAIRS
 AND PROFESSIONAL
 DECORATING SERVICE

TEL: 01296 681323
MOB: 07855 236726

Will Kimberley Garden Services

01442 255784

Phone for a free no obligation written estimate
wkgardenservices@btconnect.com

- High hedges a speciality
- Fences erected and repaired
- General garden tidy up's
- In fact any job in the garden!

Make a Will

AND LASTING POWERS OF ATTORNEY

Protect Your Home 100%

YOU DECIDE, who is to run your affairs, who gets what, guardians etc, not the State.

MINIMISE RISK of Inheritance Tax and the disinheritance of children.

Best Price Guarantee

from specialist Solicitors and professional Will Writers since 1999

FREE HOME VISIT

For a **DAYTIME** or **EVENING** appointment call

01525 220644

www.wisechoicewills.co.uk

from
CARE FEES
and
PROBATE COSTS



Will Trusts & Probate Practice

A wise choice

MAKING A WILL HAS NEVER BEEN EASIER

ASPECT

YOUR LOCAL ELECTRICIAN
TOTTERNOE
OVER 20 YEARS EXPERIENCE

ELECTRICAL

CONSUMER UNIT UPGRADES (FUSE BOARDS)
LIGHTING - INTERIOR, EXTERIOR & SECURITY
REWIRING
NEW INSTALLATIONS
TESTING & INSPECTION

ALL WORKS TO CURRENT WIRING & BUILDING REGULATIONS
PART P CERTIFICATED & FULLY INSURED



CALL STEVE ON
07976 283969 / 01582 665068
aspect@sparky.me



EXCEEDING EXPECTATIONS IS JUST PART OF OUR SERVICE



If you're **selling**, **letting** or **buying** a home, make it happen with your local estate agent



01525 220605 • info@giblinproperty.co.uk
www.giblinproperty.co.uk

THE WORKTOP SPECIALIST

DELIVERING OUTSTANDING QUALITY & SERVICE FOR ALL YOUR WORKTOP & JOINERY NEEDS FOR OVER 50 YEARS

- FREE HOME MEASURING SERVICE
- CUTTING & EDGING SERVICE AVAILABLE
- VISIT OUR BRAND NEW SHOWROOM

Abbey Gate, Boscombe Road,
Dunstable, Bedfordshire, LU5 4FA

Tel: 01582 668 973 Fax: 01582 608 227
Email: sales@dunstablelaminates.co.uk
Web: www.dunstablelaminates.co.uk



@DLaminates



Dunstable Laminates



D R Property Services

Kitchens
Bathrooms
Repairs & Improvements

drpsuk.pt@gmail.com 01525 237498
07970 260518

Anne Johnson D.O. Registered Osteopath

6 Moor End,
Eaton Bray

01525 221958
07957 250682



Café masala

Exquisite Indian Cuisine

We Cater for Office or Private Parties and don't forget to try our Sunday Buffet

10% Discount on all Takeaway Orders Over £12

Fully Licensed & Air Conditioned

Open Seven Days a Week

Hours: 12 Noon to 2.30pm & 6.00pm to 11.30pm

Tel: 01525 22 22 64

63 Bower Lane · Eaton Bray · Dunstable · Beds · LU6 1RB
email: taraque@hotmail.co.uk · www.cafemasala.com

alto window cleaning

A reliable and professional service.....

- Window Cleaning
- Conservatory Cleaning
- Fascia & Gutter Cleaning
- Solar Panel Cleaning

T: 01525 234120
M: 07807 973871

AARON FENCING

ALL TYPES OF DOMESTIC & COMMERCIAL
FENCING & DECKING WORK UNDERTAKEN

FREE ESTIMATES
FULLY QUALIFIED & INSURED
PERSONAL SERVICE AT COMPETITIVE PRICES

TEL: 01582 665779
MOBILE: 07798 92722

7 STATION ROAD, DUNSTABLE, LU5 4HS

YEARDYE

Luxury Bathrooms

A family-run
business for
over 25 years

DESIGN
SUPPLY
INSTALLATION



www.yeardyluxurybathrooms.co.uk

email: bathrooms@yeardye.com
T: 01296 706220 T: 01525 222717

Buy Direct From Our
Own Farm

Master Card

VISA

From Ivinghoe Turf

- Commercial & Domestic
- Small Orders Welcome
- Bark, Grass Seed & Fertiliser
- Laying Service
- Discount on Larger Orders
- Screened & Blended Topsoil
- All Year Availability
- Forklift Delivery Available



ROLAWN®
Approved Rolawn
Stockist

Family firm farming since 1949

ALL AREAS

Freephone :

0800 043 5061

www.ivinghoeturf.com

The Bungalow, Vicarage Farm, Ivinghoe, Leighton Buzzard

ARC Contract Services Ltd

- Painting & Decorating • Plastering
 - Wall & Floor Tiling • Door Hanging
 - Bathroom & Kitchen Installations
- 20 years experience

All work guaranteed and fully insured

Call Adrian : **01582 539179**

Mobile : **07789730580**



WESTROPE BROS.

LAWN MOWER SERVICES

ALL TYPES GARDEN MOWERS SERVICED

THE RYE, EATON BRAY

Tel: Eaton Bray 220587

Gas Boiler Servicing

Over 40 years experience

Have your boiler serviced by a **Gas Safe**
and **CORGI** registered engineer

Other services available:

Maintenance, repair and installation of all domestic gas appliances including LPG. Boiler installations, Landlord Safety Certificates and Power flushing.

Free Quotes, no call out fee, and free friendly advice on all of the above.

Edwards Gas & Heating Services

Eaton Bray

Tel 01525 220626

www.edwardsgasandheating.co.uk

stevethegas@orange.net



Vicky

The Dog Grooming Specialist

www.vickysdogcare.co.uk



With a reputation for offering an exceptional personal service



- Over 29 years of professional experience
- Trained at the London Academy of Professional Groomers to the highest City and Guilds standard
- Dorwest Veterinary Trained
- Member of the Pet Industry Federation
- Sympathetic and gentle handling of all dogs
- **FREE** Health check with every grooming session
- **No cages used! No cage dryers!**
- One to one personal attention.....loads of TLC

Where Dogs Come First!



Mobile: 07796 445416

Telephone: 01525 222775

Email: enquiries@vickysdogcare.co.uk



Committed to the highest standards of animal welfare and customer care

Over 30
Years
experience.
FREE
Quotes

Misty Double Glazing?

Over 30
Years
experience.
FREE
Quotes

**KEEP YOUR WINDOW FRAMES...
... WE JUST REPLACE THE GLASS!**

- UPVC • Aluminium • Or Wood

Because we replace just the glass the repair is a
Fraction of the cost of a complete replacement window.

BEFORE

AFTER



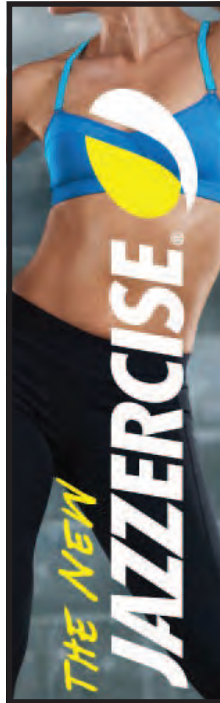
mistydoubleglazing.co.uk

QUALITY GLAZING SERVICES

01525 876808

WE ALSO REPLACE BROKEN...

- Glass • Handles • Hinges & Locks
- AND REPAIR...Patio Doors & Conservatories!**



**JAZZERCISE
DANCEMIXX
CLASSES
AT ST MARY'S
EATON BRAY
9.30am
THURS & SAT
AND
BREWERS HILL
DUNSTABLE
7.45pm
MON & WED**

**01525 715208
angelajazzercise
@gmail.com**

REVIVE HOLISTIC THERAPY

Holistic therapies are concerned with treatment through massage, manipulation and relaxation. They are not only treatments for one physical ailment or one part of the body, but also treat the person as a whole.

Ideal for today's stressful lifestyles.

Treatments include:

- Aromatherapy Massage
- Indian Head Massage
- Hot Stone Massage
- Reflexology
- Reiki

Vouchers are available for any treatment, so why not treat a loved one or friend as well as yourself.

Edlesborough based. For more information or to book an appointment call
Kate Meredith IHHHT, RGN, on **01525 221380**

*HPC Registered
CHIROPODIST & PODIATRIST*



(Also Central Luton surgery - open 6 days)

*Stuart Ball
Ceramic Tiler
Specialist
at all aspects of
Wall & Floor Tiling
Over 32 yrs Experience
01525 229381*



Stephen D. Janes

(Established in 1982)

**CARPENTRY, JOINERY
KITCHENS FITTED
PROPERTY MAINTENANCE
TELEPHONE: 01525 220649**

**G & J Groundwork
Ring Garry**
01582 477568
07949 118011

**Fencing Panels • Blockpaving • Paths
Shingle Drives • Slabs • Paving
Steps • Gardenwalls • New Patios
Relaying • Soak Aways • Drainage
Free estimates or advice • References
www.gandjgroundwork.co.uk**

Neil Hodson Associates

*BUILDING DESIGN
STRUCTURAL ENGINEERING*

**PROFESSIONAL BUILDING DESIGN,
ADVISORY AND DRAWING SERVICES**

From plans for domestic extensions
to multi-storey offices, commercial
buildings and factories.

Structural surveys, site surveying,
advice on building defects and
Feasibility Studies

Planning Applications and Building
Regulation Consents obtained.

**24 HIGH ST TRING
Tel 01442 890894 OR
Edlesborough 222462**



At Ian Waldron Photography we strive to capture images that are both relaxed and natural. We do this with little fuss or intrusion so you can enjoy one of the most special days of your lives! This is also true of our portraits which are all done on location which captures you and your family perfectly.

Ian Waldron
naturally relaxed photography

www.ianwaldronphotography.com
01525 221479
Your Village Photographer

Danesborough Chorus

*celebrates 40 years of music-making in a concert at
the Grove Theatre, Dunstable, at 7.30*

March 28th, 2015

with the Milton Keynes City Orchestra

Bethany Seymour (soprano) and

James Birchall (bass-baritone)

conducted by Ian Smith

Programme:

Mozart's joyful "Exsultate, Jubilate"
Handel's Coronation Anthems (Zadok, etc)

Fauré's beautiful, stirring Requiem

Tickets from 01908 372192 or from the theatre..

ENTERPRISE WEEK

1-5 December 2014

Enterprise is a time of year when the children of Edlesborough School create Christmas items to sell at our Christmas Market, which this year was on Friday 5th December. All the money raised will go to charity. Every class was hard working; making and creating interesting things to sell. All classes were competing in a competition to raise as much money as possible.



Written by Jess S and Oliver H



local people working for you

OUR COMMITMENT TO YOU

30day challenge

...TO SELL OR LET YOUR HOME - OR WE WILL REDUCE OUR FEE...

Lettings 01525 371997 Sales 01525 377733
www.mandmproperties.co.uk

*30 day challenge is for a limited time only. Terms & conditions apply. Please ask a member of staff for details.



Live a healthy & active life

Free 10 minute advice chats with our Chartered Physiotherapists & HCPC Registered Podiatrists

PHYSIOTHERAPY
PODIATRY &
CHIROPODY
PILATES
ACUPUNCTURE
SPORTS INJURIES
MASSAGE
WOMEN'S HEALTH
& PREGNANCY
CARE



St. Jude's

physiotherapy, health and well being

01525
377751

enquiries@stjudesclinic.com
www.stjudesclinic.com

J Able bathrooms

New Showroom NOW Open in Edlesborough

DESIGN

Free CAD design of your bathroom, This will give you a photo realistic finished plan of your design.

SUPPLY

Come and browse our display suites, This will help you decide on the perfect bathroom for your needs.

INSTALLATION

Our installations are of the highest standards!

We take pride in making you delighted with the finished result.

We have suites in a wide range of styles to suit your budget.
Drop in or ring to make an evening appointment at the showroom
or a home visit at your convenience.

Opening Times

Monday. 9am-5pm
Tuesday. 9am-1pm
Wednesday. Closed
Thursday. 9am-1pm
Friday. 9am-5pm
Saturday. 9am-1pm
Sunday. Closed

T: 01525 220043 M: 07891 449077

3 Summerleys, Edlesborough, Buckinghamshire, LU6 2HR
W: www.jablebathrooms.co.uk E: ableplumbing@hotmail.co.uk

fancy a break?



LUXURY 3 BED, 2 BATH APARTMENT APPROX 1 MILE FROM CENTRE OF PUERTO BANUS MARINA, SPAIN. 45 MINS EASY DRIVING FROM MALAGA AIRPORT.

ALL MOD CONS INCLUDING AIR-CON, SAT TV, FULLY EQUIPPED KITCHEN, SWIMMING POOLS, EXCELLENT CLUBHOUSE & TENNIS COURTS.

MANY GOLF COURSES AND ALL WEATHER BOWLING GREENS NEARBY. CLIMATE IDEAL FOR HOLIDAYS THROUGHOUT THE YEAR. RATES £350 - £750.

CALL PETER OR CELIA ON 01525 220173 OR VISIT OUR WEBSITE AT WWW.479LOSANARANJOS.CO.UK.

Plumm

PROPERTY

'A fresh approach to selling property' ...

IN AND AROUND YOUR VILLAGE

Phone now for a free, no obligation, Valuation of your Property

01296 660230

01442 863737

www.plummproperty.co.uk

Absolutely Plastered

**DOMESTIC/COMMERCIAL,
CLEAN AND RELIABLE SERVICE,
FREE ESTIMATES, FRIENDLY ADVICE**



- * Plastering & Coving
- * Floor Screeding
- * Pebbledashing & Rendering
- * Dry Lining
- * Cornices & Mouldings
- * Insurance Work Undertaken

CALL NICK CONWAY ON

Mobile: 07751 830716

Tel: 01296 688981

6 Cotes Way, Wing, LU7 0RB

Established over 20 Years

Duncan Tomblin

TREE SURGEON

**Forestry Contractor • Tree Felling
Crown Reduction & Thinnings
Deadwooding • Hedge Cutting
Stump Grinding • Site Clearance
Private Agriculture Fencing Contractor
Chipper & Stump Grinding Hire
Digger Hire**

**FULL PUBLIC LIABILITY INSURANCE
FREE ESTIMATES**

'The Best Choice For Your Tree'

TEL: (01525) 221946

MOBILE: (07802) 410728

12 Greenways, Eaton Bray, Beds



**NORTHALL & DISTRICT
WEDNESDAY CLUB
CHARITY No 293080**

QUIZ NIGHT

**NORTHALL
VILLAGE HALL
FRIDAY 13TH MARCH**

7:30pm for 8pm start

TICKETS £8

Includes hot meal

Bring your own drinks and glasses

Tel: Beryl Bishop 220868

QUIZ!

28th February—7 for 7.30pm

Eaton Bray Village Hall

£9 a head—Teams of 8

Food provided! (Bring drinks)

My name is Emilie Sanders, I'm a student at the University of Leicester and have lived in Eaton Bray all my life.

In August, I'm going on the adventure of a life-time, climbing Mount. Kilimanjaro in aid of Childreach International. All proceeds from this quiz will go towards my fundraising!

Please pay online for tickets at:

mydonate.bt.com/fundraisers/emiliesanders1
and remember to sign your name!

If you're finding it difficult to put a team together we can help.

Any questions: 07948187144 or email at
emilie.sanders@rocketmail.co.uk



**Welcome to
Eaton Bray Academy**

Telephone: 01525 220468
Email: admin@eba.ec

A wonderful place to be



Patricia

Mobile Beauty Therapist

Massage & Beauty Treatments

01525 237781

07866 126510 Fully Accredited & Insured



McTimoney CHIROPRACTIC



Margie Craib BSc BHSI DC AMC MMCA
Human and Animal Treatments

Ashridge Farm, Ringshall, Berkhamsted, Herts HP4 1ND
Telephone: (01442) 842729

General Chiropractic Council Registration No. 293



Virtual administrative
support to businesses &
private individuals

Website hosting

Domain registration

Desktop publishing

01525 229695

Email:

enquiries@morenassociates.co.uk

www.morenassociates.co.uk

ADRIENNE'S PRIVATE HIRE

Call for a **FREE** quotation
Book early to avoid disappointment
Very competitive prices

Airport Transfers
& Private Hire

07980 039715

*Our executive Cars, 6 seater Minibuses and
lady driver are all available*



J.G.S. Metalwork & Son

Specialists in Gates
& Gate Automation

Access Control • Security Grilles • Railings
Balconies • Stairwells

www.jgsmetalwork.co.uk

Call in to discuss your ideas

High Street, Edlesborough LU6 2HS

Tel: 01525 220360 Fax: 01525 222786

GRASS ROOTS GARDEN MAINTENANCE

TREE SURGERY, HEDGE PRUNING,
SELECTION SUPPLY AND PLANTING OF
TREES, SHRUBS AND HEDGES.

REGULAR MAINTENANCE/ONE-OFF JOBS

(Fully Insured)

Brian McMahon NCH (Arb)

01525 221960



Edlesborough Flowers

Flowers, Gifts, Jewellery
& More...

2 High Street,
Edlesborough,
LU6 2HS

Tel: 01525 221920



1980s Quiz Night

Saturday 7 February 2015

7:30-11:00pm

Edlesborough School Hall

£10 per person – includes Thai curry and quiz entry

**Tickets on sale from 12 January,
from school office**

Come on your own or in teams of up to eight!



A Highland Fling

All welcome and no previous experience required.

Jeremy & Grace will talk you through some simple Scottish dances, including Strip the willow, The dashing White Sergeant, The eightsome reel and many more.

Join us for dancing and dinner

Sunday 8th February 6pm – 9pm

Eaton Bray Village Hall

Supper, tea and coffee included

Bring your own alcohol

Family ticket – Two adults and children - £30

Adults: £10.00

Children/Students: £7.00

For tickets contact 01525 222283

ILLUSTRIA

Kennels & Kathotel

Offering your pet a fully licensed Dog and Cat boarding service.

Purpose built Dog kennels

Individual Cat chalets with outdoor exercise runs

All in pleasant country surroundings

01582 ~ 665343



ILLUSTRIA
Springfield Road
Wellhead
NR Dunstable Beds
LU6 2JT



Proprietors

Mick, Denise and Michele Garrod



The Gentleman Gardener

Let your local RHS qualified gardener make your garden beautiful, from simple garden maintenance to total redesign of your garden.

Please call Barry on
01525-222451 or
07541196384

to pop round for a free chat.

N.D.S.

General Building & Plumbing
(25 years experience)

- Roofing; Installer of UPVC guttering, soffits & fascia boards
- Kitchens & Bathrooms fitted
- Property Maintenance
- Fencing • Patios & Block Paving
- Gazebos • Garden Structures

Tel: 01525 221470

Mobile: 07946 626564

FREE ESTIMATES

•••

**ALL WORK CONSIDERED
NO JOB TOO SMALL**

For a top quality
decorating job call

Marc Flack

01525 223166

Trading locally for 10 years
References are available

Make your house a home with blinds and awnings from

**VANSAR
BLINDS**



www.vansarblinds.co.uk



- Free No Obligation Measuring And Quotations
- All Blinds Made To Measure
- Choose In The Comfort Of Your Own Home Or Workplace
- Family Run Business
- Large Range Of Quality, Affordable Fabrics And Colours To Choose From



Call: 01525 220477 or 01582 699565 E: sales@vansarblinds.co.uk

Financially Prudent (IFA) Ltd

23 The Green, Edlesborough, LU6 2JF

Your local IFA for impartial Personal or Corporate advice on:

- Mortgages
- Pensions & Annuities
- Insurance
- Savings & Investments

Call Paul Pearce on 01525 220480 or email paul@finpru.com for a no obligation initial discussion



Financially Prudent (IFA) Ltd is authorised and regulated by the Financial Conduct Authority



Established Village Dog Grooming Service

Professional and Affordable
Large breeds welcome
Trained in Hand Stripping
Nails, Ears and Glands included

Contact Ulrika Tel 01525 211592
5 Mill Road, Stanbridge, Beds. LU7 9HX
www.abfabgrooming.co.uk

Spinney Landscapes & Gardening Services

All Aspects of Grounds Maintenance
Weed Control • Driveways & Patios
Lawn Care & Scarifying • Fencing
Turving • Tree Work
Snow Cleaning & Gritting

Tel: 01582 872084 Mob: 07876 500292
Email: chambo.1628@btinternet.com

Village Photos

Left: Sue and John Parker kindly agreed to light their commemorative tree on Edlesborough Green for the Christmas period – organised by the EDaN Beautification Team.

Below: Members of the congregation at the Christmas morning family service at All Saints Church Dagnall, posed in our very own nativity scene. We had fun, and hope you did too.

Above: A frosty morning at the ford, Eaton Bray by Richard Woodhead

Below: Winter morning in an Eaton Bray field by Richard Woodhead

invites you to
**Eaton Bray
Methodist
Church**
**Café
Community**

Saturday February 14th

11.00am to 1.00pm

*Relax & chat with friends,
coffee/light lunch*

All ages welcome (inc. activity area).

See you there

*food for the body.....
food for thought....*

OPEN GARDENS FESTIVAL 26 July 2015

Wanted - Gardens

In Eaton Bray, Edlesborough or Northall
Would you be willing to open your garden for the day to
help raise money for charity?

If so, or you would like more information, please contact
Kay Griffiths on 222849 or Gordon Gray on 220136.



S M Reilly & Son Ltd

General Builders & Contractors



**Turning Your House into
a Home Since 1987**

*All aspects of the building
trade undertaken*

- *Extensions*Hard Landscaping*
- *Windows, Doors & Conservatories*
- *Fitting of Aluminium Bi-fold Doors*
- *Kitchen & Bathrooms*Drives*
- *Loft Conversions*

01525 221740
07970 637511

ALAN BOULT
(Light Haulage)



- TRANSPORT ● COLLECTION
- DELIVERY SERVICE
- SINGLE TO MULTIPLE ITEMS
- REGULAR CONTRACTS WELCOME

Tel: 01296 427182

Mobile: 07770 237745

Email: boulton586@btinternet.com

A McClelland Pest Control

FOR FAST RESPONSE CALL:
mobile 0777 494 8415 or office 01582 872158

*specialists in: wasps - bees - ants - hornets
fleas - cockroaches - bed bugs - pigeons - magpies
rabbits - rats - mice - moles - squirrels - foxes - mink - feral cats*

UNMARKED VEHICLES

For further information please call
or email a.mcclelland_pestcontrol@hotmail.co.uk



Tel: 01525 221847
sales@act.uk.com



GENERALMECHANICALSERVICESLTD

VEHICLE SERVICING AND REPAIRS



**MOTs • MOT REPAIRS • SERVICING
DIAGNOSTICS • TRACKING • AIR CONDITIONING
TYRES • CAMBELTS • COLLECTION & DELIVERY
WELDING & FABRICATION • BATTERIES**

All vehicles - all mechanical work!

1 HONEYWICK LANE, EATON BRAY, LU6 2BJ

reception@general-mechanical-services.co.uk

www.general-mechanical-services.co.uk



01525 222876



TEL: 01582 667924



13185

"Good reputations take years to build"

GRAHAME PRATT

Plumbing & Heating Engineers

**Plumbing & Heating
Bath & Shower Room Design and Installation
Ceramic Floor & Wall Tiling
Kitchen Installation
Small Building Works**

www.grahameprattplumbing.co.uk

Email - enquire@grahameprattplumbing.co.uk

The Great British **FISH & CHIPS** Supper

Supporting Spinal Injuries Association
Friday 15th May 2015



sia 
spinal injuries association



Make the batter matter

Hold a Great British Fish and Chip
Supper to help rebuild lives after
spinal cord injury.

To request a fundraising pack:

Call **0845 071 4350**

Email fundraising@siafishandchips.co.uk

Visit www.siafishandchips.co.uk

Registered Charity No 1054097



Have fun and raise money for the SIA



David Brown

Window Cleaning

Quality Reliable Service.

Regular, Occasional or
Single Visits.

Friendly Free Estimates.

Facias, Guttering & Conservatories.

External Cleaning & Maintenance.

Fully Insured.

Phone 01582 472113

Mobile 07534 837073

D & E HINES

High-Class Butchers

Quality Beef, Pork & Lamb

Grade A Poultry

BBQ & Sausage Speciality

Renowned for 'Bunkers Sausages'

Telephone: 01525 220413

98 High Street, Eaton Bray

Eaton Bray Village Hall



- ❖ Equipped to support theatrical productions and film shows
- ❖ Large car park
- ❖ Large Kitchen with a six ring cooker, large refrigerator, hot trolley, crockery etc.
- ❖ 3 separate areas to hire to meet your needs and budget
- ❖ For more information and brochure please ring Norman on 07975 797202

- ❖ Superb venue for weddings
- ❖ Fantastic place for parties and dances
- ❖ A must for children's parties, can fit the bouncy castle inside if weather dictates!!!
- ❖ Keep fit groups
- ❖ Ideal for Club meetings or functions



Dagnall School



A Buckinghamshire co-educational school

For 4-7 year olds



Dagnall School offers small class sizes, an exciting curriculum, excellent care and support and good links with the local community



Ofsted 2011
"Pupils are confident,
very happy at school
and curious to learn."



Tel: 01442 842473



www.dagnall.bucks.sch.uk

E-mail: office@dagnall.bucks.sch.uk

G.N.C Wall & Floor Tiling

Covering all aspects of tiling from
Natural Stone & Porcelain to ceramics



gnctiling@hotmail.com

Providing assurance & attendance through to
completion of works

For a free full & comprehensive quotation
please call Colin Bell

07725 033017

01525 222094

D.A. Windows Doors & Conservatories

23 Church Lane, Eaton Bray, LU6 2 DJ

Tel: 01525 221051 Mobile: 07807 798387

email: mimcavinder@hotmail.com

AUTHORISED
SWISH INSTALLER
WITH OVER 20
YEARS
EXPERIENCE

Installation of PVCu windows, doors and conservatories
Replacement glass units and window maintenance

QUALITY PRODUCTS - QUALITY WORKMANSHIP -
REASONABLE PRICES



General building
maintenance work
also undertaken
including:
Fascias and Soffits
Gutters
Fencing

Accredited Member of the
Incorporation of Plastic
Window Fabricators and
Installers Limited



PLUMBING AND HEATING

FOR ALL YOUR PLUMBING, HEATING AND GAS
REQUIREMENTS

NOSSITER AND BARNETT LIMITED
PLUMBING AND HEATING

CONTACT MATT OR JAMIE
TEL 01525 229524 MOB 07802 270427





Protecting what's important

MJ Security Systems Ltd

MJ Security Systems

Contact Us For More Information

Unit 4, Arianne Business Centre,
Blackburn Road,
Townsend Industrial Estate,
Houghton Regis,
Bedfordshire,
LU5 5DZ

Please call for a free quotation

T: 0800 0856126

E: info@mjsecurity.co.uk

W: www.mjsecurity.co.uk



We also specialise in:

- IP Cameras
- Intruder Alarms
- Access Control
- CCTV & Monitoring
- Door Entry
- Covert Cameras
- Security Lighting



FROM ONLY
£439.95+VAT
Products and
Installation



Kit includes:

1 x Wireless Door Contact, 2 x Wireless
P.I.R., 1 x Wireless Sounder, 2 x Remote Set
and Unset Fobs.

Stylish • Wireless • Secure

M . P . S

Maintenance & Property Services

- KITCHENS AND BATHROOMS
- PAINTING AND DECORATING
- PROPERTY RENOVATIONS
- PLASTERBOARDING
- FENCING

FREE ESTIMATES

NO CALL OUT CHARGE

NO JOB TO SMALL

LOCAL

Contact:- Julian

07958 306301

E-mail – mps@mustoe.co.uk

www.mustoe.co.uk

Leighton Aerials

Established 1970

For all your aerial and
satellite needs call Colin
on 01525 374742



Edlesborough School & Pre-School



Pupils' behaviour is outstanding...

*The environment for learning is exciting and
stimulating...*

*A real strength of the school is pupils' attitude to their
learning .*

Ofsted 2013

For more information about our School, Pre-School and Before and After School facilities,
visit our website at www.edlesborough.bucks.sch.uk

Please contact the school on 01525 220431 to arrange a visit.

CHIMNEY SWEEP

Local & Est. Brush n Vac
Friendly, Clean and Efficient

Call **KEVIN HING** on

Tel: 01525 371592

Mob: 07940 528897

www.khing.co.uk

Member of NACS

E W Wallace & Co
Chartered Accountants
Tax Consultants
Business Advisors

Small business specialists serving
Beds, Bucks & Herts

- Annual accounts
- Tax returns
- Self-employed
- Limited companies
- Small business specialist
- Sage Accounts expertise
- Prompt, personal service
- Value-for-money fees
- Free initial consultation

01525 220826

www.ewwallace.co.uk



JAMES FALCON-CROSS

LANDSCAPING AND OUTDOOR LIVING DESIGN



**ALL ASPECTS OF LANDSCAPING
UNDERTAKEN INCLUDING
FENCING, TURFING AND PATIOS
TIMBER STRUCTURES
DESIGNED AND BUILT**

VEGETABLE AND HERB GARDENS

01442 843258 / 07769 901325

ONECROSSFALCON@GMAIL.COM



Beau

HAIR AND BEAUTY SALON

- Unisex hair salon
- Hair Extensions
- Nail Bar
- Wedding, Prom Hair Styling
- Express Eyelash
- Girls Glamour Parties
- Accessories
- Loyalty Cards

01525 220926

3 Summerleys, Edlesborough LU6 2HR

For lots more offers and news about what is happening follow
and like us on Beau Hair & Beauty @beausalon

CND
Shellac™

KOLESTON
PERFECT

O.P.I

Beauty
Works
CELEBRITY
CHOICE

ghd

Home or Business
IT Support



Visit Our Website at www.hobit.co.uk

Laptop Repair • Virus Removal • Data Recovery
Laptop Screen Replacement • Data Transfer
Wired & Wireless Networks • Broadband Setup
Backup Solutions • Printing Problems
Tune Ups • 1:1 Training • Email Problems
Ipad & Iphone Connectivity Issues
Computer Upgrades • Free advice

Call now 01525 378127 or 07702 80 70 90

RELIABLE - PROFESSIONAL - LOCAL

RD Electrical

FULLY INSURED AND
PART P QUALIFIED

NAPIT Registered.

No job too big or too small

Free no obligation quotes

All work undertaken
including controls

Call Richard Ellison on
07932 759680 or
01525 222406

Email: rdelectrical1@sky.com

9 High St, Eaton Bray LU6 2DN

Reiki Therapy

Reiki means universal energy. It is a relaxing, calming therapy that calls on your own bodies natural healing properties. It is possible for Reiki to help with physical symptoms, emotional issues and spiritual growth.

Session is £30 per hour

Contact Nicola (Reiki level 2)

Mob 07941799772

01525837018

Bower Lane Eaton Bray



Wagging Wonderful
Dog Grooming
Here to take care of your mucky pup!

- Your local grooming service in Eaton Bray!
- 1-2-1 care for your dog
- NO cages!

Telephone: 07580 343 396

Website: waggingwonderful.weebly.com

Email: waggingwonderful@yahoo.co.uk

T. COBB

PLASTERING
FLOOR SCREEDING
PLASTER MOULDINGS
CEMENT CORNICES
RENDERING

GENERAL BUILDING & ALTERATIONS

TEL:

01525 792698

MOB:

07772 231348



Harmony Plus Hair & Beauty Clinic

Bridal Packages Available

We offer a range of treatments:

- 3D Lipo Fat Reduction
- Teeth Whitening
- Caci Non-Surgical Face Lift
- Crystal Clear Microdermabrasion
- Extreme Lashes and LVL's Lashes
- HD Eyebrows
- Fake Bake Tanning
- Young Blood Make-up
- Manic Nails
- Bio Sculpture Gels
- Shellac Nails
- Hot Stone Massage
- Reiki

with special offers



Harmony Retreat

FREE SPA PLACE
in our cosy log cabin
FOR THE BRIDE ONLY

if the Bride books her Spa Hen Party
for 5 people or more at
Harmony Retreat's Log Cabin
when Hair & Makeup is booked
with Harmony Plus Hair & Beauty Clinic



Harmony Plus Hair & Beauty Clinic
6A Wallace Drive • LY6 2DS • Dunstable/Leighton Buzzard
07852 145053 • www.harmonybeautysanctuary.net



C H BUILDERS

1 Richmond Court
Eaton Bray
Dunstable
LU6 2DY

cwhawkes@tiscali.co.uk
Tel: 01525 229558
Mob: 07989 357231

Local builder with over 35
years experience in the trade,
specialising in:

- Kitchen fitting and alterations
- Extensions
- Loft conversions
- Renovations

Recommendations available

Please contact Chris to discuss
any requirements for a free
quotation

LINSLADE PHYSIOTHERAPY & SPORTS INJURY CLINIC

47a Coniston Road Linslade
Leighton Buzzard Beds LU7 2PJ



Affordable effective treatment to ..

- Relieve your neck & back pain
- Loosen your stiff joints
- Ease your arthritis
- Get you back in the game after a sports injury
- Help you recover from surgery

Why Wait To Feel Better?

Ring for an appointment now

01525 853462

E-mail: pt4u@linsladephysiotherapy.co.uk

(Ample free parking available)

Beacon Villages Community Library



The next Library Lunch will be held on Wednesday 25th March at 1pm in Cheddington Village Hall. The speaker will be Edwin Rye, former BBC Gardener of the Year talking about Colour in the Garden. A two course lunch with vegetarian option, is included. Tickets are just £15 each, available from

the Library in Ivinghoe or by phoning Linda on 01296 668582 or Janet 01296 668341. All proceeds support the library.'

Library opening times:

Tuesday 2pm - 5pm
Wednesday 10am - 12noon
Thursday 2pm - 5pm
Friday 2pm - 7pm
Saturday 10am - 1pm

Dagnall Over Sixties

Dagnall Over Sixties enjoyed their Christmas lunch on Dec 16th. On 20th January they held their 44th birthday celebration in the village hall. In February they are meeting at The Red Lion in Dagnall at 1pm for lunch and a

quiz. In March they have Bingo with Chrissie Smith in the village hall at 2pm. Anyone over sixty is very welcome to join. Please call Rosemary 01442 843202.

fitness 4fun

Get those muscles working! Tone and strengthen arms, legs, bums and tums – you'll look and feel great.

Why not give it a go? Only £5 per week for one hour of fun fitness. Pay-as-you-go, come when you can.

Come along and join our friendly group. Everyone welcome.

No need to book – just show up.

What: Fitness4Fun with Kay
Where: Edlesborough Memorial Hall
When: Every Friday, 10:00-11:00 am



Eaton Bray Parish Council

Highlights of the Meeting Minutes of Eaton Bray Parish Council Held on Monday 1st December 2014 from 7:30pm at the Coffee Tavern

Central Bedfordshire Council (CBC)

Website: www.centralbedfordshire.gov.uk - Customer Services: 0300 300 8302 / Email: customers@centralbedfordshire.gov.uk

- Autism Awareness Training: CBC is working in partnership with Autism Bedfordshire and Bedford and Luton Borough Council to run an autism awareness training programme. The training is run by a highly experienced trainer and all attendees will hear a personal account from someone with autism. Call 01234 350704 for more details of the free training.
- School Closures due to bad weather: Keep up to date on which CBC schools are closed during bad weather on their website: <http://www.centralbedfordshire.gov.uk/webApps/SOS/cbc.aspx>.

Bedfordshire Police:

REPORTED CRIME – YEAR TO DATE		
Crime Type	RECORDED CRIME	
	01/11/13 to 30/11/13	01/11/14 to 30/11/14
Violence against the Person	4	1
Domestic Burglary	0	1
Burglary Other	0	0
Vehicle Crime	0	4
Other Theft	0	1
Criminal Damage	3	0
Drugs	0	0
Total	7	7

News from the team: If you wish to contact your Local Policing Team then please call 01582 473411 or email LPT.LeightonBuzzardLinslade&Rural@bedfordshire.pnn.police.uk.

All information is confidential and no names will be disclosed. Please remember if you need to contact the Police: **Non-emergency call 101 / All emergencies 999**

Speedwatch:

Training for the Speedwatch volunteers is being carried out on Saturday 6th December 2014, 2:00pm in the Coffee Tavern. Eaton Bray Parish Council will be working together with Bedfordshire Police and Totternhoe Parish Council in co-ordinating this campaign.

HGV Limit Through Parish

Further to the application submitted to Central Bedfordshire Council, both CBC and Amey received overwhelming support for Eaton Bray to be included in the scheme. Both Eaton Bray and Totternhoe Parish Councils are now working together to put forward an updated scheme to include both villages in a revised scheme.

Christmas in the Parish

The Parish Council would like to thank all the businesses/individuals who sponsored the Christmas Wreaths this year. Due to the popularity of the Christmas Wreath's

the Council will start to collate requests for next year's (2015) Christmas Wreaths. To express your interest in sponsoring a wreath for Christmas 2015, please contact Cllr.

ASB INCIDENTS	
November 2014	
Total	2

Philip Spicer with your details: Email - philip.spicer@gmail.com.

Felling/Trimming Trees on Parish Council Land

In line with the procedures set out by Central Bedfordshire Council (see below), the Parish Council would like to bring to residents' attention the general guidelines regarding the felling/trimming trees on Parish Council land.

Central Bedfordshire Council

It is generally Council [CBC] policy not to top, lop or fell otherwise healthy trees that would otherwise need no maintenance to:

- Alleviate problems such as the build of leaves, seeds, berries or other minor debris on a neighbouring property.*
- To allow more light to a property, where the trees in question would not otherwise require any surgery.*
- To improve television or satellite reception.*
- To prevent roots entering already broken pipes.*

... if a tree/hedge does not have birds nesting or if a tree does not have a tree preservation order, we can only work on it if there is a health and safety risk or the tree is diseased.

Please note that details of the Eaton Bray Parish Council's formal response to the planning application (CB/14/04055/

Dagnall Christmas Fayre

The Dagnall Christmas Fayre took place on Saturday 6th December and raised £1266 for the school & Dagnall Under Fives. Thank you to all the local businesses who gave their support by donating prizes for our raffle including, Berkhamsted logs, Luton Hoo, The Red Lion, Bluebells Tea Rooms, Bridgewater Arms, Tring Brewery, Haresfoot Brewery, D & E Hines, Cross Keys Farm, Seventh Heaven, Bliss Beauty, Willows Farm, Snakes & Ladders, Mead Open Farm, Aquavale, Bekonscot, Janes, Zeera, NG Autos, Berkhamsted Taekwondo-do and Edlesborough Tea Room.

Thank you to all the staff, governors & parents who helped on the day and to

OUT) for 150 dwellings on land off Totternhoe Road is provided on pages 20 and 21 in this magazine.

Next Eaton Bray Parish Council Meeting:

Monday 2nd February 2014 from 7:30pm at The Coffee Tavern (1st floor)

Parish Council Website:

www.ebpc.co.uk

For full detailed copy of the minutes for Eaton Bray Parish Council please visit the Parish Council website.

A hard copy of minutes can also be viewed on the Parish Council's notice board at The Coffee Tavern.

Follow Eaton Bray Parish Council on Facebook and Twitter

Keep up to date with what is going on in your parish

✉ Heidi Head, Parish Clerk & RFO

Email: clerk@ebpc.co.uk - Telephone/Fax:

01525 221464 - Website: www.ebpc.co.uk

Office Hours: Tuesday/Thursday/Friday

09:30-13:30hrs [messages can be left on answerphone]

everyone who came along.

FODS & Dagnall Under Fives



The National Trust South Beds Assn

Monday 2 February

Migration Mysteries

Chris Ward, Wildlife Photographer

2:30pm Salvation Army Centre,

Bull Pond Lane, Dunstable

Visitors are welcome at £1

For further information

phone 01582 527790



How to Get Ripped Without Being Ripped Off

Jonathan Vernon Smith is the Sony Award winning mid-morning show presenter for BBC Three Counties

Radio. During his consumer hour he helps listeners with their consumer problems and now shares his advice with you.

If you're anything like me, you'll have completely overindulged during the festive period. In fact, I think I ate about 17 turkeys and drank my bodyweight in Harvey's Bristol Cream. Sadly, the result of this gluttony is that the New Year requires a little vigorous exercise and healthier eating to get back in shape. Indeed, it's generally this time of the year when many of us look in the mirror and race to the nearest gym, happy to sign ourselves up to expensive, long term contracts. But how do you protect yourself against getting ripped off in the process?

Over the years, I have dealt with many complaints about gym membership deals. Sometimes this is because gyms are unreasonable in their approach but sadly, more often than not, it's down to pure naivety from consumers.

Gyms are businesses, not charities! They have sales advisors in most gyms whose sole responsibility it is to sign up new customers. They are generally paid by commission, and are highly trained to persuade you to sign yourself up for at least a year's worth of keep fit expense. They seem so nice, so friendly, so understanding and so kind. However, don't underestimate them. Without you agreeing to join the gym, they don't get paid. That is their motivation.

Be aware that when you sign up to a

gym membership, you are entering a legally binding contract. Unless there is a cancellation period outlined in the terms and conditions, you are legally obliged to pay your membership fees for the entire length of the contract. If you're concerned that you'll only bother to go for the first two months, then agreeing to a year long (many contracts are 18 months or two years) is a pretty stupid thing to do. If you decide to cancel, you'll probably be liable for hundreds of pounds worth of fees.

What about exceptional circumstances though? Often consumers will come to me saying "I took out gym membership and then lost my job the following week" or "I signed up to a gym but had a bad car accident and haven't been able to use it for 6 months". Of course exceptional circumstances can help your case when attempting to cancel, but unless it states that cancellation is allowed under exceptional circumstances in the terms, you'll still be liable for the full membership costs.

So when CAN you cancel a gym membership? Obviously if the service you receive from the gym is poor (for example many of the machines don't work) then you can make a good case for cancellation of the contract. Also if you can prove that some of the terms and conditions in your membership agreement are unfair you may stand a chance, but be prepared for a fight. In my experience gyms can be some of the most aggressive organisations to fight as a consumer. They often have legal departments that are very used to arguing with unhappy gym goers who want a quick way out.

If you are uncertain over your motivation to attend the gym, it is worth noting

that many gym chains will offer special memberships that can be cancelled easily, or are on a pay as you go basis. It may be best to start with one of these until you've properly decided whether you like it or not.

You may conclude from this month's article, that I'm an anti-gym person. I'm not! Honestly! If you are motivated, they can be fantastic places to fight the flab, feel

better about yourself and improve your health. Just approach gym membership with your eyes open and you'll not come unstuck months down the line. Happy Fat fighting!



Edlesborough Book Group

Matilda by Paul Gallico



The book chosen for this month seemed, at first glance quite strange. A story about a male kangaroo, named Matilda doesn't seem to have a great deal going for it. But its author, Paul Gallico, also wrote *The Snow Goose* which we had read and enjoyed previously few years ago. This, however, was totally different in style and content, to the beautifully descriptive and gentle tale of the *Snow Goose*. Paul Gallico had been a sports journalist, before becoming famous as a short story writer and novelist and this novel draws on that experience.

The story begins when an English, former boxing champion named Billy Baker is discovered together with his pet kangaroo, by a small time booking agent in New York. Billy has trained Matilda, his kangaroo, to box. Matilda, although male, is named in honour of his country of origin rather than to signify his sex and has a natural facility for boxing, which Billy has trained to a high degree. Bimmy, the agent, sees a business opportunity and snaps up the duo as a carnival act, taking advantage of their inexperience to cream off a high return on his investment. He hopes to make money, in order to impress his girl friend's parents, so that he can marry her. They are booked at an out of

town carnival, challenging all comers to stay upright during two rounds with Matilda. All goes well until, by chance, the reigning middleweight champion, Lee Dockerty, after a night out with his friends happens to visit the carnival and accepts the kangaroo's challenge. Matilda delivers a knockout blow and this is witnessed by a leading sports writer, who then publishes a piece declaring Matilda world champion. Billy and his pet are now famous and many complications follow, including the attentions of the Mafia.

This is a very light, tongue in cheek story and is not meant to be taken seriously. The humour is broad and the book received mixed opinions from our book group. This reviewer found the narrative rather dated. It was reminiscent in style of Damon Runyon and the characters and clip joints of old New York, but the book was written and set in 1970 and the style jarred rather with the setting.





Eaton Bray Lawn Tennis Club

First of all, a very Happy New Year to all our Focus readers. Let's hope that 2015 brings us health, happiness and personal fulfilment both on and off court! Especially on court for our members, who will once again be competing in our annual championship and striving to be crowned King or Queen of the Club and win one of our Diamond studded cups. May you serve many Aces, and don't be a Joker, use a racquet not a Spade. Oh, I'm such a card.....

Talking of spades, has anyone seen a furtive looking bloke, not dissimilar to spiv Private Walker from Dad's Army, hanging around the village offering cheap snowploughs to anyone who passes? If so, don't be taken in by him. Only a fool would be, and anyone with an ounce of common sense would have just ignored him. Anyway, he seemed like a nice chap so I bought one for the club as reported in the last edition. My only excuse is that it was dark at the time, and the street lighting up the Comp, where the deal was done, was not ideal. I pushed it back to the clubhouse and eagerly awaited the first fall of snow. Imagine my disappointment the following morning when daylight revealed it to be no more than a sit-on lawnmower with two spades tied to the front. I did try it out a couple of times when we had a small flurry, but the spades were set too high to do any good, and the string wasn't long enough for them to be lowered. However, around the courts we do have the shortest grass in Bedfordshire. So, apologies to all the skiers in the village who were so looking forward to us transforming the skate park into a mini version of the Alps with piles of fresh snow from our new acquisition. And if anyone wants to buy a slightly used sit-on lawnmower (no MOT, tax in the post),

complete with two free spades, please get in touch. Best to meet me in the early hours behind the bus shelter with a wad of used twenties, and don't bring a torch.

To more serious matters; do you recall the magnificent efforts of our 'mystery player' to play 250 sessions of tennis in 2014? Well, now the year has ended I can exclusively reveal to you, Focus readers, that the player, one of our Senior Men, actually achieved 312 sessions! I've calculated that this means that he spent more time on court than he did at home. His household water bill with all that showering is equivalent to the national debt of South Sudan. With half of the Central African Republic's thrown in as well. But not just did he play 312 sessions of tennis; oh no. Along the way he won two Men's Doubles titles (including a postponed match from 2013), a Mixed Doubles title, the Dunstable over 55's singles and the County over 65's doubles. Partners Roy Cooke and Jane Wigley helped along the way, but this is quite some achievement. Many congratulations to club stalwart Peter Hale. He modestly declined to be interviewed for this magazine, simply stating that he intended to 'take things a bit easier this year'. Maybe only 300 sessions and four titles then...:-)

Finally, an interesting story. I came home this afternoon to find loads of tennis balls in my garden, all over the lawn and flowerbeds. I went next door, knocked and to my surprise, non other than John McEnroe answered. I said, "Look John, will you please stop hitting your tennis balls into my garden"? He said, "I didn't. Last time I saw them was when I washed them and then hung them out to dry". I said, "Well they were in my garden again just now". He said, "You cannot be serious .. the balls were on the line".....

For any further information about the club, including when we get together for our social tennis sessions up at the School Lane courts, or our various activities, you can visit our website at www.ebltc.org.
uk; Alternatively please call Chairman

Stuart Adolph on **07773 816320**, Coach Sara Leavy on **07561 571578**, or if they're all out and I'm not cutting my lawn with a snowplough, then me, Andy Cross, on **07783 667338**.

Edlesbray Leisure Fellowship (ELF)

Hello everyone and a Very Happy New Year to you all.

We hope that you all enjoyed Christmas and New Year celebrations whatever you decided to do. Already 2015 seems to be passing by very quickly.

Our meeting on November 27th went very well and we had a lively discussion regarding the programme for 2015. It looks to be a really good programme. The meeting was closed with members enjoying sherry and mince-pies, hosted by Alan and Val. Thanks go to them.

Thanks also to Brian for help regarding a complete list of dates for 2015.

One VERY IMPORTANT change in our usual programme is that OUR WALKS WILL TAKE PLACE ON THE SECOND MONDAY OF THE MONTH, not the 4th. This hopefully will avoid losing one on Bank Holiday Mondays. A report on our January walk will be in the March issue of Focus.

The walking group met on November 24th and, in sunny weather, walked from the Wyevale Garden centre in Tring, along the Grand Union Canal to Startops Reservoir, down the Aylesbury Arm, around the Reservoir to join the Wendover Arm and back to the Garden Centre for a brief Coffee break. The group decided that as the conditions underfoot were not too good, it was better to walk on the Canal tow-path. The distance was approximately 4miles.

December 11th, the members enjoyed a very nice Christmas Lunch at The Cock

Inn, Wing.

A nice finish to 2014.

No details are available yet for our first Lunch Outing of 2015 on February 12th. Details will be known at our January meeting.

Everyone is always welcome to join us.

Dates for Your Diary:

Feb 9th Monday:

Walk from Eaton Bray Church 10a.m.

Feb 12th Thursday: Lunch Out



SID HUDSON [★]
presents

CALI-R

Soul Night

Friday
13th February
8pm to 12.30am

Wind back the years
with the very best
in Soul, Motown,
Jazzfunk & Reggae.

**United Services Club,
160 High St South, Dunstable.**

Tickets available from:
Clowns Dunstable 01582 699402 • U.S. Club 01582 475607
Vinyl Revelations Luton 01582 876391 or online www.cali-r.com

Tickets ONLY £8.50

All Saints' Church, Dagnall

Services in February 2015

Sun 1st Feb.	9.00 am	Eucharist
	10.30 am	Morning Service
Sun. 8th Feb.	10.30 am	Morning Service
Sun. 15th Feb.	10.30 am	Family Communion
Sun. 22nd Feb.	To be decided - see Church noticeboard	
Sun 1st Mar.	9.00 am	Eucharist
	10.30 am	Morning Service



Sunday School meets each Sunday at 10.30 am except when there is a Family Service.

Third Festive Bingo

In memory of Basil Thorne

The bingo in early December kicked off Christmas festivities in Dagnall with a fun night. There was a lovely buffet and lots of great raffle prizes. In total the evening raised £94.20 for Dagnall Village Hall. About seventy people came along and all said what a wonderful evening they had had – we are sure one Basil would have enjoyed.

Many thanks to caller Claire who as always did a brilliant job and to Mike, Eric, Dave and Carol (and family) for their help on the night.

We appreciated everyone's support and once again have already had lots of requests for another one this year!

✍️ The Thorne family

Eaton Bray Methodist Church

November brought us inspiring services including a joyful Cafe Worship which studied the Beatitudes and how best to reflect them in our daily life.

In early December Rev Wallace Edwards launched us on the path to Christmas by encouraging us to step aside from the hustle and bustle in order to 'take time out' with God and let him prepare us. Our Cafe Worship in December, led by Andy Melvin, gave us an opportunity to contrast Santa and God, reminding us that God is always near and his son Jesus, born in the manger, was fully committed to life in the raw. On the 3rd Sunday of December a large congregation was treated to a delightful Carol Service, led by the Sunday School on the theme of families. The Nativity story was told with colourful verve through a series of lively puppet scenes. We are grateful to the children and their inspired teachers for the hard work which produced

such a winning performance. On Christmas Day, our service, also very well attended, was led by Peter Baker, who gave us a stirring sermon that focused on the Christ Child, born in poverty, among ordinary humble people and who is still there for us today.

In the weeks before Christmas June Jarrett and Celia James put on sale a wonderful display of beautifully crafted handiwork which achieved the magnificent total of £738. We owe them a great vote of thanks for their immense commitment and skill so generously given.

We wish all readers a happy and healthy New Year and will always offer a warm welcome to anyone who feels like joining us in services and other activities.

Date for your Diary: Cafe Community on Saturday 14th February 2015, 11am - 1pm. We will be delighted to see you if you come to join us for a cup of tea or coffee and/or a light lunch.

BRAYSCOPE

Experts in commercial & domestic horticulture

For all your **Commercial**
and **Domestic** landscape
requirements
Professional and **Qualified**
landscape maintenance and
Construction company



Contact Kevin on

01525 220948 07949 601630

brayscape@aol.com

14 SCHOOL LANE, EATON BRAY BEDFORDSHIRE, LU6 2DT

Come for Coffee at St Mary's

For a warm
welcome and a
cheering cuppa
on the first
Saturday each
month in
St Mary's Church
Eaton Bray
10.00am - midday



Are you an elderly or
housebound resident ?

Would you enjoy a
monthly (free delivery) fish
and chip supper ?



If your answer is 'yes' to either of the above questions then please do get in touch.

We run this scheme on the last Friday of every month but need your orders no less than 48 hours prior to this. We have a voicemail facility on our phone if we are not there to speak to you directly. All messages will be confirmed back to you so you know your order has been received.

Please call on **01525 229 656** to place your order

Ordinary people doing amazing things





EDLESBOROUGH TENNIS CLUB

Website by Jupiterwill

www.etctennis.org

Play tennis Have fun Socialise Feel good Join our club

Join via the website, or call Iona McLean-Hall on 01525 220562 for details

Monthly
draws

New 100 Club

Spend £2 to
spend a penny

In aid of toilets and other improvements
at St Mary's Church, Eaton Bray



Contact: eatonbraychurch@aol.com or telephone: 222691

Eaton Bray Academy

The staff work exceptionally well as a team to promote children's welfare, learning and development and to make sure everyone enjoys their time at the pre-school. Ofsted 2012



Children benefit from the abundant shared resources, access to school assemblies, the information technology suite and the extensive outdoor facilities. Ofsted 2012

Pre School



How many Pre Schools do you know that are part of the Main School? Well, EBA is *one* School!

All the children wear School uniform, have their own book bag, can attend clubs and even eat our delicious School dinners, cooked on the premises by our own School cooks.

.We believe that quality Early Years education is essential; it is on this that everything is built.

We offer a caring, happy, secure and stimulating learning environment in which the children thrive.

Come and have a look!

Tel. 01525 220468 or email admin@eba.ec

Children clearly benefit and thrive as the accommodation, equipment and resources are well suited for their purpose and conducive to learning. Improvements to the premises and the outdoor area give children the confidence to explore and help all aspects of their development. Ofsted 2012

ravencounselling

Teresa Raven, accredited and registered member of the British Association for Counsellors and Psychotherapists (BACP).

Counselling offers you a safe, confidential place to work through difficulties, issues or problems you may be experiencing.

My pricing starts at £15 for an initial consultation, with further sessions priced from £40.

Please contact me for more information, or visit my website.



www.ravencounselling.co.uk



ravencounselling@aol.com



07960090113



[facebook/ravencounselling](https://www.facebook.com/ravencounselling)

Make your next holiday a *Disney* one!
with one of our luxurious villas right on the doorstep

MINUTES FROM DISNEY **CHEAPER THAN A HOTEL** **PROFESSIONAL FRIENDLY SERVICE**

PersonalTouch
VACATION VILLAS

☎ 0845 5280 162

🌐 personaltouchvacationvillas.com

As former Edlesborough residents; we now own and run a family business in Florida, USA. Let us help make your Disney holiday as **PERFECT** as it can be. Our **private pool villas** (AKA 'home from home'), cater for all your needs and are **within 5 miles of the parks** - the perfect base for your trip.

Leighton Plumbing & Heating

Oil fired boilers
service, repairs
& installations



All other aspects of plumbing
& heating undertaken

Oftec registered & insured

01525 385250
07774 567472

11 Woodman Close
Leighton Buzzard
Beds
LU7 3NU

leighton-plumbing@ntlworld.com



Helping Hands
The Home Care Specialists

Est. 1989

Do you need a Helping Hand?

Our **local** care team has been providing award winning quality homecare since 1989.

We offer a homecare service **from 30 minutes per week to full-time Live-in Care**, which enables you or your loved one to remain at home with compassion and dignity.

To find out how we can help,
call: 01296 752 632 or
visit: www.helpinghands.co.uk

Stoten Gillam
chartered accountants
chartered tax advisers

99 High Street South
Dunstable
LU6 3SF
Tel: (01582) 608601
www.stotengillam.co.uk

ICAEW CHARTERED ACCOUNTANTS

CHARTERED TAX ADVISERS

"Practical Solutions for Growing Businesses"

W Roff Agricultural Services

- Hay & straw for sale
- Paddock maintenance
- Fencing

07909 680807
ELSAGE FARM, CHEDDINGTON

Wednesdays
1pm to 2:30pm
(During term time)
Eaton Bray Village Hall
(Church Lane LU6 2BJ)

Cheeky Monkeys

under fives play time

£1 per adult/child - Under 1 yr free

creative play 🍌 singing
stories 🍌 baby corner
craft 🍌 healthy snack

01582 699092 🍌
(Beehive Children's Centre)

Come along,
make new friends
and join in
the Fun!

Coffee Tavern

Large Hall

£6.00 per hour

Commitee Room

£3.50 per hour

Large Hall &
Commitee Room

£8.00 per hour



Bookings 01525 220891

Stairlift and access ramp available

We are a nurse-led home care provider committed to delivering the very highest standards of care.

Support from our dedicated team gives you or your loved one the peace of mind and confidence to be able to continue living at home.

Family-owned and managed, we are independent and do not belong to a national chain or franchise. We are registered with the CQC, number 1-1499072841.



**your own
home care**
putting the nursing back into care

To talk to us about your requirements please call Helen Yates RGN on 07920887414 or 01442 843064 or email helen.yates@yourownhomecare.co.uk



www.yourownhomecare.co.uk



Some comments from our recent Ofsted report:

Children are consistently offered a stimulating range of activities and opportunities which enable them to make good progress towards the Early Learning Goals.

Staff have a good understanding of creating a safe and welcoming environment . . .

Staff support children well and encourage them to be active in their learning and to think critically.

We are a committee run playgroup operating five mornings a week 9:15 – 12:15 for children aged 2 to school age.

If you would like to find out if your child would be happy here, please phone our Playgroup Leader, Ann Tobin on 07816 358 342.

www.dagnallunderfives.co.uk

janes

Electrical Appliances, Bikes & Flooring Store

The Family Business with 130 years of recommendation



Free Delivery & Installation

On Kitchen Appliances & TV's

within a 15 mile radius (excluding installation on Gas & Built-in Appliances)

Sound Advice & Peace of Mind

4-8 High Street, Edlesborough, Dunstable, Beds LU6 2HS

Tel: 01525 220208 Fax: 01525 222802

www.janesltd.co.uk

GALRAL SERVICES

AUTOMOTIVE, AGRICULTURAL & PLANT MAINTENANCE

Modern, classic and vintage vehicles; servicing & restoration

Over 40 year's local experience in automotive industry

Agent for BEPCO tractor parts.

Agent for TRS restraint systems (ratchet straps)

Welding & fabrication services (sheet steel & aluminium)

Auto electrical and engineering works

Contact Simon

07785 278188

Fax/answer machine

01525 210597

GATES

Plumbing & Heating Limited

We'll help meet your heating needs

- Biomass boilers
- Air source heat pumps
- LPG central heating
- Oil and Gas central heating

Please contact us on:

01296 670445

info@gatesheating.co.uk

www.gatesheating.co.uk



We are Gas Safe, OFTEC, NAPIT
and MCS registered

Government funding for renewables

Simple Fitness

Fitness classes & individual fitness training

- * Circuit Training
- * Cardio Blast
- * Crazy Abs
- * Buggy Push
- * Box-Fit
- * Ski-Fit

Membership £35 per month or Pay as you go

Forget the gym...make fitness simple!

www.simplefitness.com

MINI DIGGER WITH DRIVER FOR HIRE

Fully insured ∞ Competitive rates ∞ Based locally
Aggregates Supplied ∞∞∞∞ Tree Stump Removal

Contact Simon

07785 278188

Fax/answer machine 01525 210597



Electrical Services

www.rselectricalservices.com



FULLY QUALIFIED ELECTRICAL ENGINEER

CPS Registered through NICEIC Scheme

Competitive prices and quality service

Available for all your domestic and
commercial electrical requirements

No job too small

Call Russell Sears:

07578 008567

01525 220008

17 Good Intent, Edlesborough

CTC Cycle Tour of New England in the Fall

19 September to 6 October 2014

Leader Emrys Jones + 11 cyclists
Total miles cycled - 658 miles. Unsupported / luggage carried. Accommodation: Bed & Breakfast in motels or inns on route. Coffee stops, lunch and evening meals purchased locally at a variety sandwich bars and restaurants.

Where we stayed overnight:

Salem/Rockport/Seabrook/Dover/Wolfeboro/Conway/Lincoln in the White Mountains (free day) /Barre/White River Junction/Ludlow/Brattleboro/Gardner/Lexington

Area covered by tour

New England is a mostly rural part of America, a mixture of tilled fields, pasture, forests, lakes and mountains, dotted with small towns and villages. The area is well known for its white wooden buildings, its covered bridges and quaint fishing harbours on the eastern seaboard, but above all for its vivid autumn colours. While each of New England states offers something, none can top Vermont. With its rich mix of deciduous trees, the Green Mountain State is anything but green in late September/October. The rich palette created by the foliage is made even more dramatic by a backdrop of a deep blue fall sky.

After a short stay in Salem, the route followed the coastline eastwards in Massachusetts to the Cape Ann Peninsula then turned north, continuing near or along the coast into south eastern New Hampshire before heading inland to the expansive Lake Winnepesaukee. After a further day riding north we turned west over the Kancamagus Highway, known for its extensive views and continued into Vermont. Then we turned south east of the Green Mountains before crossing briefly to Massachusetts, then a final foray into

southern New Hampshire before the tour finished on the outskirts of Boston.

My notes of the trip.

We flew into Boston for coach transfer with bikes to Salem, Massachusetts for two nights which gave us the chance of assembling our bikes and to deal with any problems at the bike shop.

Our first day's cycling took us from Salem along the coast to Gloucester passing Hammond Castle, walking out to the Eastern Point Lighthouse near Rockport, a very busy fishing village on the Cape Ann Peninsula. The next day we passed through the busy town of Essex, through historic Ipswich on to Newbury Beach and lovely Plum Island for overnight stay at Hampton Falls Inn. In the morning we cycled along Hampton Beach, one of the busiest during the season. Our lunch stop was in Portsmouth, a very hot sunny day, before we crossed into over the Pistaqua River into Maine. Within 10 miles or so we crossed the Shannon Falls River back into New Hampshire.

One of my favourite stops was The White Buffalo Trading Post, a very old wooden building that sold everything. It had a cafe at the back and a Gun Shop. We popped upstairs and inspected the guns/ammunition....we did spot a neat little number ideal for a handbag! A lovely stop in Wolfeboro that night at the Lake Motel, a couple of us hired boats for a quick paddle on the lake, before the evening meal.

The next day, still enjoying lovely weather, we cycled into North Conway and over the first of New England's famous covered bridges. Before leaving North Conway the next morning we bought a picnic. Shops and cafes were in short supply as we climbed up and over the Kancamagus

Highway in the White Mountain National Forest, New Hampshire. On the way up there were many viewing areas. The climb started fairly gently but I thought it tough at the end. Our reward was amazing views. It is considered one of the most scenic drives in America. A further reward was the 14 mile descent, absolutely glorious, except



one of our number, Susan, lost her spindle/quick release mechanism. After much searching we found it but the nut was damaged.....what to do? Experienced cyclist, Michael, had an idea he has used in the past. He took her front wheel out and held it up to the traffic to indicate we had a problem. It worked like magic, the first four wheel drive vehicle stopped and offered assistance. They took Susan and her bike down into Lincoln to a bike shop for repair.

A much deserved day off was enjoyed by all in Lincoln, some went for a scenic walk, a train ride, or chilled out on a sun lounger. I decided to pamper myself with a full body massage at a Spa Hotel at Loon Mountain Resort. I loved it.

A fabulous ride out from Lincoln along the Lost River Road through Lost River Gorge, with a climb up to Beaver Pond. On the way down we called in at a local "Fall Fest" an opportunity to pick your own apples, buy pumpkins, not a good idea on a bike, but the most delicious apple pie and ice cream was on offer and we sat in the sunshine to enjoy it. Continuing down to the valley we crossed the Connecticut River into Vermont overnight stay in Barre. The following day we were faced with a choice of routes, a longer back road route, or a slightly shorter main road. Most of us

chose the back road route to White River Junction, little roads, some unsurfaced, and awash with stunning autumn colours. Here, after a couple of hard climbs we had an amazing view of rolling hills with low cloud down in the valley. Later in the day we stopped in South Royalton, the home of Vermont University's Law School. The cafe/shop was called

"Barristers". I did buy a scarf here and had trouble choosing one out of so many lovely local designs.

The weather now had turned slightly cloudy now but we still had amazing views of the stunning Quechee Gorge, Vermont's Grand Canyon, had changed its verdant green cloak to one of many glorious colours. Later in the day one of our cyclists discovered his tyre was badly worn so we stopped at the bike shop in affluent Woodstock, I did spot a nice dress shop.....perhaps another time! Yet another long climb out of South Woodstock but a great downhill to Downers Cafe then onwards through the beautiful Black River Valley to Ludlow, a winter sports resort.

The next day was our rainy day. It was overcast as we left Ludlow so heading towards Andover our weather proofs were on. After the initial hills the terrain flattened at Chester. We stopped at the "Moon Dog" cafe, an unusual cafe with lots of local paintings, handicrafts on display and books to ponder over. I very rarely eat at coffee stops, especially on this holiday after an all American breakfast. However, for comfort on a wet day I downed a hot chocolate and a cinnamon and raisin bun (a very large one) which got me up yet more hills. We then came upon Grafton, an architectural treasure trove of 19thC buildings, also the

home of Grafton Quilts and Grafton Village Cheese Company. Onwards over another unsurfaced road through woods. Our next stop, was the "Newfane Creamery and Cafe" here I had the best ever BLT panini. We continued on into Brattleboro where we managed to dry our things overnight.

Leaving Brattleboro we crossed the bridge over the Connecticut River again to Ashuelot's covered bridge. We dallied a while here at a second hand emporium, old radios, gramophones, irons, food processors etc. The sun shone now as was we continued to the small village of Fitzwilliam where we had a picnic on the green. We then headed for the Templeton Turnpike, more miles of unsurfaced road through woods. Here the punctures started. Tom had a puncture earlier in the day. Now Jack had one, followed closely by Susan. I was very lucky not to get one. It was slow going and the directions were not very clear, but a man with dog ensured us we were going the right way, always good to know. We were making for Winchendon then an overnight stop at Gardner.

Our last day's cycling. We gathered for a photo outside the motel in the sunshine and followed our route. Unfortunately details were not very clear due to a missing sign, so we missed a turning but decided to carry on and just get to Princeton our own way. It worked out well and we continued through Sterling and Clinton for lunch, a very generous one. As we were approaching Concord, one time home of Ralph Waldo Emerson, popular essayist, we asked about a coffee/tea shop and were recommended a small place just near a petrol station. It was a prize winning bakery/cafe and was outstanding. I just wished I was hungry! The traffic was heavy through West Concord and we had to go across a very busy Interstate controlled by traffic lights. On the whole, cycling along the country

roads traffic had been very light and we were all impressed with the motorists who almost always gave us priority. The tarmac surfaces varied greatly, occasionally it was a smooth but more often than not the surface was very bad indeed, no time to relax, you needed to be alert. I did have a slight mishap. I cut my leg slightly on some barbed wire so my much travelled first aid kit came in very useful.

Following our route instructions we eventually found the cycle path which took us into Lexington and our motel. Concern was expressed that we had rooms on the first floor, no lift, so had to get bikes up flights of stairs. This proved difficult for the tandem and it was not the first time!

On arrival here, all cycling had finished so many congratulations were expressed all round and we had a great evening at a Mexican restaurant near the motel, I drank my first ever Margarita, delicious, and then another!

Saturday was a free day so several of us decided to go into Boston for a harbour cruise and bus tour around its well known historic sites. I went into the Faneuill Hall, where revolutionary meetings had packed the hall as early as 1763. Spent some time in Quincy Market and walked around the Beacon Hill area.

We were a little worried about getting our bike boxes promptly so we could prepare and pack bikes for our return flight. For various reasons delivery was delayed but we did eventually get them on the Sunday morning of our departure. After I had packed my bike (in cardboard bike box from local cycled shop) I was able to walk into historic Lexington, the Birthplace of American Liberty to have a good look around and a picnic on Battle Green in the sunshine.

A great cycling experience.

✍️Angela Feaviour

Dogs Just Love Vicky's Dog Care

Owning and caring for a dog is great fun and immensely rewarding, it is also a big responsibility. If you need advice on nutrition, exercise, grooming and general healthcare then you need to speak to Vicky at Vicky's Dog Care, where you will be given one to one attention and expert advice.

It was just over 20 years ago Vicky Waller moved to Eaton Bray and set up her one to one dog-grooming business. This was to be no regular dog grooming facility. The aim was to deliver the best service in the industry to local dog owners, ensuring every dog that came through the door got one to one personal attention. Now, many years later Vicky has built a reputation for offering the highest quality of care and exceptional personal service.

Vicky works from clean well-equipped premises. Her workroom has all the mod cons including a negative Ion shower with a collagen and vitamin C filter, designed to enhance your dog's health and well-being. Vicky's attention to detail is certainly impressive; all to ensure every dog feels comfortable, relaxed and cared for. Vicky is very proud of the fact she never uses cages. The atmosphere is calm, warm and inviting. Just mentioning groomers who use cage dryers will cause Vicky to throw her hands up in horror. Vicky's priority is to groom your dog without causing any stress or discomfort.

Every grooming session automatically includes a free health check, looking for any common 'doggy' issues, such as signs of allergies, eczema, or any specific conditions common to your dog's breed. Her advice is based on years of personal and professional experience. Vicky is Dorwest Veterinary trained and handles every situation with patience and

consideration, as though your dog was her own.

She says, " I want every dog to be excited to see me and enjoy his or her visit. Regular grooming appointments for any breed of dog, regardless of coat type, has many benefits and it's also an excellent time to check on other aspects of a dog's health that may otherwise be missed."

With over 29 years of owning, grooming, showing, handling and breeding dogs Vicky is experienced in dog behavior and can understand canine body language, recognizing stress signals in a dog before they escalate to panic or aggression. "I will never force a dog to do something that it doesn't want to do." Says Vicky. Instead, she will encourage your dog to enjoy its grooming experience with reward based training and desensitization techniques. "I spend time getting to know all my canine clients. It gives me enormous satisfaction to see the results of my work on a dog that has thoroughly enjoyed their visit."

In the early days of Vicky's Dog Care, Vicky's mantra was always quality over quantity, which is exactly what it still is to this day. Hours of business are part time. Services are provided strictly by appointment so she can concentrate on YOUR dog. Vicky's work is based on the belief that all her customer's needs are important. The time she spends with your dog is committed to meeting those needs. As a result, a high percentage of Vicky's business is from repeat customers and referrals. There is always a waiting list in operation.

Vicky is passionate about helping all dogs and their owners and shares her own experiences via her website, blog, and social media. Here you can find lots of information on all areas of dog health

and welfare. She invites all dog owners to submit ideas for future posts and ask questions.

Vicky is clearly committed to the highest standards of animal welfare and customer care. She would like to thank all clients

for making Vicky’s Dog Care the success it is today. Here’s to another 20 years of a great local service!

Vickys Dog Care – Where Dogs Come First!

www.vickysdogcare.co.uk

Are Your Headaches a Pain in the Neck?

Headaches affect almost two thirds of us and many people often self-medicate with painkillers without actually discovering the cause of the headache.



There are many different types of headache but a common cause is pain referred from the neck. The following symptoms could suggest your headache is originating from the neck:

- A constant dull steady ache, often at the back of your head but sometimes behind the eyes, temple or on top of the head.
- It may be present for days, weeks or months.
- The headache is worse with certain movements or static postures.
- There is a history of trauma to the neck e.g. whiplash, sporting injury or repetitive work.
- The neck movements are restricted.

The cervical spine (neck) is made up of 7 vertebrae (bones) stacked on top of each other. The vertebrae are linked together by facet joints which are either side of the neck and an intervertebral disc between each vertebra. The joints that most commonly cause headaches are the upper facet joints. These should normally glide freely to allow neck movements. However, if the joint, surrounding muscles or ligaments are injured then the joints can become stiff and the associated spinal nerves become irritated which can cause referred pain into the head or behind the eyes.

If the headache is caused by the neck, physiotherapy can help. After examination and assessment, a treatment programme can

be suggested. This may include joint mobilisation, massage, trigger point release and an exercise programme to stretch and strengthen the muscles.

Is your workstation set up correctly? An ergonomic assessment will check that everything is set up around you properly. Finally, stress can cause headaches so this also needs to be identified and addressed.

St Judes has a very experienced team of Physiotherapists so if you would like further advice or to book, please contact:



**St Judes Clinic,
26 Lake Street
Leighton Buzzard
LU7 1RX**

☎ 01525 377751

**📍 www.stjudesclinic.com
enquiries@stjudesclinic.com**

NORTHALL BAPTIST CHAPEL

Chapel Lane, Northall

(just beyond the 30 speed limit signs on the road towards Leighton Buzzard)

Everyone is welcome to our Sunday worship each week between 11am and 12.30pm including tea/coffee and time to talk together.

For more information contact:

John Hazell 01525 218142

Email northallchapel@btinternet.com

There has been a Baptist Chapel in Northall for more than 200 years. Today we continue to seek to worship God, serve him in our daily lives and support and encourage one another in the difficult and the joyful times.

Dagnall Weather Station (AONB)

Weather Conditions for November & December 2014

Elevation: 450 ft - Latitude: 51° 50' 13" North - Longitude: 0° 33' 34" West
November 2014

	High	Date/Time	Low	Date/Time
Temperature	16.3°C	1 Nov 13.00	-1.8°C	25 Nov 05.00
Mean Temp	8.3°C	Dominant Wind:	SSE	
Humidity:	98%	6 days during Nov	63%	1 Nov 14.30
Barometer:	1027.1 hPa	24 Nov 18.30	986.9 hPa	Nov 08.00
Wind Speed	35 mph W	7 Nov 14.00	Months avg.	5.3 mph
Wettest Day	21 Nov	17.20		
Monthly Rain:	Total	Nov	96.6 mm	3.80 ins

December 2014

	High	Date/Time	Low	Date/Time
Temperature	12.7°C	18 Dec 13.00	-3.8°C	28 Dec 21.00
Mean Temp	5.2°C	Dominant Wind:	W	
Humidity:	97%	2-5-6-26 Nov	66%	10 Dec 13.30
Barometer:	1041.7 hPa	29 Dec 20.30	989.2 hPa	12 Dec 06.00
Wind Speed	40 mph NNW	24 Dec 03.00	Months avg.	7.3 mph
Wettest Day		26 Dec	13.00 mm	0.512 ins
Monthly Rain:	Total	Dec	48.7 mm	1.917 ins

November started on the mild side it was not until the night of 6th when we had our first frosts -1.4°C and it wasn't until 24/25th when we had frost again. It continued being unsettled for the rest of the month with rain and sunny periods but less sun than the average for November but more rain which was 115% of the 6 year average. With a mean temperature of 8.3°C that's 2.2 degrees above last year's November figures so overall warmer.

December The month started off on a mild dry and sunny note until the frosty morning of the 6th and stayed moderately dry until the 11th then 2 days of rain then back to dryer and cold and this was the pattern for the rest of the month. The few days over Christmas were dry and sunny but a cold spell returned for the end of the month. The notable thing about December was how dry it was, we only had 48.7mm of rain that's 66% of 6 year average.

Annual Climatological Summary for 2014

Temperature (°C)

Precipitation (mm)

Wind Speed (mph)

	Hi Temp	Date	Low Temp	Date	Mean Temp	Day Max	Date	Month Total	Hi	Date	Avg	Dom Dir
Jan	12.2°	6 th	-1.8°	12 th	5.9°	21.4	1 st	160.6mm	46.0	25 th	5.9	S
Feb	12.1	20 th	1.3°	14 th	6.3°	18.6	7 th	131.4mm	56.0	14 th	6.2	S
Mar	19.8°	30 th	-2.1°	24 th	7.9°	12.4	2 nd	31.0mm	34.0	2 nd	5.7	SSE
Apr	20.3°	21 st	-0.7°	15 th	10.6°	8.4	25 th	36.2mm	30.0	6 th	7.0	WNW
May	25.1°	19 th	-1.2°	3 rd	12.5°	21.2	24 th	117.0mm	40.0	10 th	6.0	W
Jun	26.8°	13 th	5.8°	6 th	16.0°	7.2	28 th	33.6mm	27.0	24 th	5.6	W
July	30.2°	26 th	8.3°	8 th	18.7°	17.4	18 th	43.6mm	29.0	4 th	4.0	N
Aug	27.4°	7 th	5.3°	24 th	15.6°	19.4	25 th	93.2mm	40.0	10 th	4.7	W
Sep	25.3°	18 th	3.9°	22 th	15.5°	2.6	19 th	7.6mm	24.0	24 th	4.2	E
Oct	21.2°	31 st	1.1°	5 th	12.6°	24.4	13 th	85.0mm	41.0	21 st	7.2	S
Nov	16.3°	1 st	-1.8°	25 th	8.3°	17.2	23 rd	96.6mm	35.0	7 th	4.8	SSE
Dec	12.7°	18 th	-3.8°	28 th	5.2°	13.0	26 th	48.7mm	40.0	27 th	7.6	W
Lows /Max	32.2°	July	-3.8	Dec	Avg 11.3°	Dec 23.4	Year	884.6mm 34.83in	56.0	Feb	5.8	Year avg W

2014 Was a wet year with 117% of the 6 year average and warmer a mean temperature of 11.3°C that's 1.55 °C higher which is a significant increase. We never had prolonged high or low temperatures, more even not so much contrast between night and day.

January / February: were very wet months, the winter storms continued unabated giving us 292mm of rain in 2 months that 33% of the year's total.

March / April: In contrast these months were dry well below average

May: was another wet month 117mm that's 225% of the 6 year average but it was a little warmer than average.

June/ July: Quiet period of weather summer had arrived sunny spells, temperatures above average and dry.

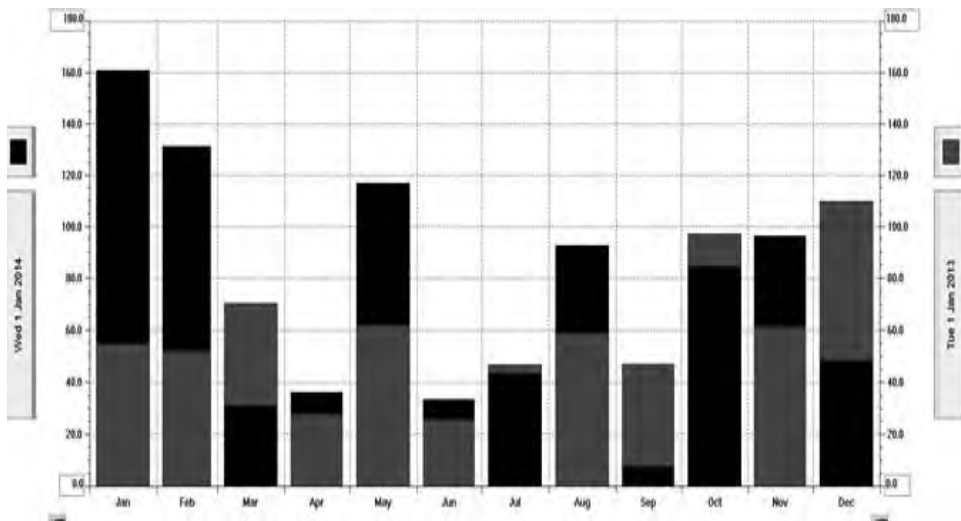
August: Was an unsettled wet month 29% extra rain and we had night temperatures dropping close to 5°C.

September: There is only one way to describe September that's "Dry". We only recorded an unbelievable 7.6mm for the whole month that is 3 tenths of an inch. This was only 15% of the six year average rain fall. We had above average temperatures with a mean temperature of 15.5°C that is 1.8°C higher than September last year

October, November and December: The last three months were mild, breaking a lot of records with a temperature reaching 21.2°C on the 31st. October. Finishing the year with a mild Christmas and New Year.

This shows the contrast in rain fall for 2013 and 2014

You can see the extra amount of rain we had in January / February



For weather data 24 hours a day, updated every 15 mins, visit: www.dagnallweather.co.uk and http://bit.ly/weather_dagnall this site forecast and much more

If anyone has a question, comment or wishes to contact me please email: david@dagnallweather.co.uk or telephone: 01442 843883

Dagnall weather now has an app for your ipad & iphone! Just go to the apple store, search for Wunderstation and follow the instructions to Dagnall Weather Station. Now updated every minute.



Salvation Sound



Psalm 90:1-4. Change!!

There comes a time in our lives when it dawns on us that we are not as young as we used to be. The future used to stretch out indefinitely; suddenly the time left to fulfil our dreams is far less than we thought. Time and tide, as they say, waits for no man. The passage of time though should not be seen as the years running out, so much as life moving on.

“And it’s from the old I travel to the new” so runs the popular hymn – Do you still make New Year’s resolutions? If so it is probable that by this the second month of 2015 you have already given up on them. The most popular resolutions are to lose weight and get fit – but – there are still mince pies, cream, and chocolate, and what of all the boxes of biscuits – one just can’t throw them away – such a waste – especially if one is trying to economise!!!

Oh dear! If you’re anything like me the chances are that living up to them is remote if not non-existent. By ourselves to change “our spots” completely is beyond us. BUT in 2 Corinthians 5v17 NIV it says “Anyone united with Christ is a new creation, the old has gone the new has come.”

Experts advise us that to feel better, reduce stress and to shed those unwanted pounds we should try walking, the best exercise of all. Start slowly and walk towards a goal of 10,000 steps a day. I started to count when I got out of bed but lost my way when the telephone rang! The Bible says that

“Enoch walked with God three hundred years” (Gen 5:22). “Noah was a just man, perfect in his generations. Noah walked with God.” (6:9). Perhaps walking with God is the answer – many have tried it – it’s not always easy –

“There’s a path that’s sometimes thorny, There’s a narrow way and straight.

It is called the path of duty, and it leads to heaven’s gate.”

One more step along an unfolding journey in which there is always more to be discovered and new joys to experience. We will of course sometimes remember the past with a tinge of regret and sometimes look to the future with a degree of anxiety but each new day is a gift from God so don’t be weighed down by a sense of hopelessness and futility, be instead uplifted by the certain realisation of God’s promises. Have a happy New Year, may it bring health and happiness to all.

✍️Maureen

The Salvation Army, Booth Place, Eaton Bray Weekly Activities



Sunday

Footprints (Sunday School)	9.45-10.45am
Morning Worship	11am
Songs of Praise	4pm

(3rd Sunday of the month from May to Dec)

Tuesday

Coffee Morning	
(alternate weeks)	10-11.30am
Music practices (all welcome)	7.30-9pm

Wednesday

Home League	2.30-3.30pm
(Ladies Mtg but all welcome)	
Champions Challenge Club (term time)	
(Ages 5-10 years)	5.45-6.45pm

Thursday

Parent and Toddler Group	
(Term time)	9.30-11.30am
Haberdashers’ night	
2nd Thursday of month	7.45 pm
Ladies Fellowship	
(Last week of month)	7.45pm

For further details please call Envoy Hilary
01525 222087 / 07932 057490

E: hilary.chadwick@salvationarmy.org.uk

W: www.salvationarmy.org.uk/eatonbray



Premier Garage Doors & Gates



Quality Garage Doors

- ✓ Superb choice of designs in metal, wood and fibreglass
- ✓ Any size door made to your requirements
- ✓ Large selection of spares & fast repair service available
- ✓ New or existing doors converted to automatic
- ✓ Professionally fitted by own expert craftsmen
- ✓ Prompt free estimates & advice
- ✓ We cover all areas



(EST 1984)

DIY kits available
Insurance work welcome
Council approved
Remote control gates also available



Unit 7, Sparrow Hall Farm, Leighton Road, Edlesborough LU6 2ES

01525 220212

www.premiergaragedoors.co.uk

a NEW year

a new LOOK

a new

floor

10% off

During Fabulous February

Carpet Vinyl Karndean Laminate

4-8 HIGH STREET, EDLESBOROUGH, LU6 2HS

www.janesltd.co.uk

01525 220208

give us a try....!

Janes