

# *FOCUS*

**June 2009**

**“We want you to come  
to the open gardens  
on Sunday 14th June”**



**THE FOUR VILLAGES MAGAZINE**

**EATON BRAY**

**EDLESBOROUGH**

**NORTHALL**

**DAGNALL**

# The White Horse at Eaton Bray

Reservations Tel: 01525 220231

**17th to 20th June**



## ***Fiesta España !***

Hopefully summer has arrived. So we thought it would be good to bring a bit of Spain to Eaton Bray!

“Roasted Toreadors”  
Tapas, & Sangria  
perhaps?

As always tasty,  
and unusual dishes.

**15th to 18th July**



## ***Γρεατ το βε Γρεεκ***

We will lighten the style a little with some great Greek meals and salads, plus some mezes or stuffed pitta bread to start the meal or just to provide a flavoursome snack.

Who's for Retsina then?

## **Focus - The Four Village Magazine Magazine Committee**

**Joint Editors:** George Crutcher - 7 Summerleys, Eaton Bray 221637

**Email:** [george.crutcher@tiscali.co.uk](mailto:george.crutcher@tiscali.co.uk)

Sally Siddons - 34 Wallace Drive, Eaton Bray 221733

**Email:** [sallysid@hotmail.com](mailto:sallysid@hotmail.com)

**Dagnall Representative:** Sue Cawdell - 10 Deans Meadow, Dagnall 01442 842200

**Northall Representative:** Derrick Bonfield - 'Poppy'n', Eaton Bray Road 220013

**Circulation Manager:** John Plater - 41 Church Lane, Eaton Bray 221095

**Treasurer:** Ken Coates - 10 The Nurseries, Eaton Bray 220868

**Advertising:** Sally Siddons - 34 Wallace Drive, Eaton Bray 221733

**Production Manager:** Tracey Moren (Moren Associates Limited) 01525 229695

Copy for publication to the Editors or one of the following by the **10th of the month:**

Kevin Cabbage - 'Larums', Eaton Bray Road, Northall

Val Barrow - 3 Chestnut Close, Dagnall

*Focus accepts no responsibility as to the accuracy or content of any advertising or articles published in 'this' magazine neither do they reflect the opinion of members of the Committee.*

*© Articles published in Focus may not be reproduced without permission.*

**Focus would like to remind contributors that the deadline for  
articles is the 10th of the preceding month**

**Police Contact Numbers...*making neighbourhoods safer together***

### **Bedfordshire Police (Eaton Bray)**

General Assistance (Recommended Number) 01234 841212

Leighton Buzzard Police Station/P.C.Viv Dady 01582 473418

P.C. Viv Dady Mobile 07908520148

Typetalk: 18001 01582 437418

Email: [SNT.Leighton-Rural@Bedfordshire.pnn.police.uk](mailto:SNT.Leighton-Rural@Bedfordshire.pnn.police.uk)

**Thames Valley Police (Edlesborough, Dagnall & Northall)**

0845 8505505

### **Village Hall Bookings**

To book your local village hall for an event please contact the following:

Northall: Lorna Cabbage, Tel: 220361

Eaton Bray: Norman Lee, Tel: 222831

Dagnall: Elizabeth Coates, Tel: 01442 842550

Edlesborough Memorial Hall: Beverly Sage, Tel: 01525 229509

## **EATON BRAY VILLAGE HALL**

**The Annual General Meeting will take place at the Hall on**

**Monday 8th. June commencing at 7.30pm.**

**Members of the Public are welcome to attend**

# Village Diaries June 2009



## Weekly

- Mon-Fri (term time) Eaton Bray Pre-school, Eaton Bray Lower School, 01525 220468  
Mon-Fri (term time) Dagnall Under 5's, Dagnall Village Hall, 9.30-12 noon, Mrs Ann Tobin 07816 358342  
Mon-Fri (term time) Edlesborough Under 5's Pre-School, Edlesborough Memorial Hall, Sue 01525 222199  
Mon-Thu (term time) Totternhoe Pre-school, mornings, Totternhoe Memorial Hall, Kay 07956 526635  
Mondays Pilates, 10.45am, St.Giles Church Hall, Totternhoe, Lisa: 01582 412426  
Mondays (term time) Mums & Tots Group, 1-2.30pm, Grace Community Church  
Mondays (term time) 2nd Eaton Bray Rainbows, girls 5-7 years, Edlesborough Memorial Hall, 4.45 - 5.45pm, Lyn 01525 222518  
Mondays (term time) 2nd Eaton Bray Brownies, girls 7- 10 years, Edlesborough Memorial Hall, 6 - 7.30pm, Sarah 01525 229194  
Tuesdays Yoga, Northall Village Hall, 1.30-3pm, Doreen 01525 377542  
Tuesdays Line Dancing, 1.30-3p.m., Eaton Bray Village Hall, Lyn Stubbs 220731  
Tuesdays Baby's First Cafe (Support for Breastfeeding mums), 10.15 - 11.45 am, Pitstone Memorial Hall  
Tuesdays Pilates, 10am-12noon, Eaton Bray Village Hall, Nicky Roussou 07861 161680  
Tuesdays Totternhoe Baby & Toddler Group, 9.30-11.30am, Totternhoe Village Hall, 07986 730922  
Tuesdays Northall Toddler Group, 9.30-11.30am, Northall Village Hall, Lucy 01525 222498  
Tuesdays Tap & Ballet Classes, JoAnn Latus School of Dance, 4-8pm, Eaton Bray Village Hall, 01582 620576  
Tuesdays Fortnightly Coffee Morning, Bring & Buy, Table Top Sale, 10-12noon, Salvation Army Hall, Booth Place, Eaton Bray  
Weds (term time) Cheeky Monkeys Under 5's Playtime, 1:00pm - 2:45pm, Eaton Bray Village Hall, Contact Louise on 07784 165259  
Wednesdays Chi Kung & Wu Chi classes, Coffee Tavern 11am - noon  
Wednesdays Pilates, 7.15pm, Northall Village Hall, Lisa: 01582 412426  
Wednesdays Egyptian Dance Class, 7-8.30pm at Eaton Bray Village Hall. Contact: Soraya 01525 853360  
Thurs (term time) Baby & Toddlers Group, Dagnall Village Hall, 12:45 - 2:45pm (12:15 if bringing lunch) Contact Michelle Tel 01442 842 676  
Thursdays Yoga, Northall Village Hall, 11.30am-1pm 01525 377542  
Thursdays Keep fit, 2-4pm, Eaton Bray Village Hall, Mrs Johnson 220304  
Thursdays Kfa Body Moves 40+, Fitness through movement, exercise & dance. 8-9pm, Edlesborough School, Pat 01582 668735  
Thursdays Baby & Toddler Group, Salvation Army Hall, Booth Place, Eaton Bray, 9.30-11.30am  
Thursdays Keep Fit Edlesborough School, 8pm Tel: 01582 668735  
Thursdays Jazzercise, 9.30-10.30am, Eaton Bray Village Hall, Angela Veryard, 01525 715208

Thursdays	Karate, 7-9pm, Eaton Bray Village Hall, Brian Bates 07958 348086
Fridays	Tap & Ballet Classes, JoAnn Latus School of Dance, 4-8pm, Eaton Bray Village Hall, 01582 620576
Saturdays	Jazzercise, 9.30-10.30am, Eaton Bray Village Hall, Angela Veryard, 01525 715208
Saturdays	Drama Class for Children, 10.35am-12.35pm, Eaton Bray Village Hall, Claire Casey, 07792 508591

### **Monthly**

1st Monday	Eaton Bray Parish Council Meeting, 7.30pm, The Coffee Tavern
1st Monday	Eaton Bray W.I. Meeting, 7.30pm, Eaton Bray Village Hall, Contact Sheila Beal on 01525 221185
1st & 3rd Tuesday	Dunstable & District Orbit Club meet at Dunstable Rugby Club at 8pm. For details contact 01525 222441 or 01582 755147
1st Sunday	Grace Baptist Church Service, 3pm, all welcome, David Coleman 01582 664990
2nd Tuesday	Toddlers' Church, St Mary's, Eaton Bray, 2.00pm
2nd Tuesday	Dunstable & District Local History Society meeting, 7.45pm, Methodist Church Hall, Dunstable (opposite Wilkinson)
2nd Tuesday	Edlesborough W.I. Meeting, 7.30 pm, Edlesborough Memorial Hall
2nd Wednesday	8.15pm Healing Service in St Mary's Church
2nd Thursday	CAMEO Coffee, tea & chat, 10am-12noon, Edlesborough Methodist Church
3rd Thursday	Edlesborough Parish Council Meeting, 7.30pm, Memorial Hall
3rd Sunday	Lunch club 11.30 to 2.00pm, Eaton Bray Village Hall, Chris Hewitt 222288

### **Other Regular Events**

10th, 24th	Bingo, Dagnall Village Hall 8pm.
12th	Leukaemia Research Coffee Morning, 2 Dunstable Road, Dagnall 10.30 am Plant sale
16th	Dagnall Over 60's Village Hall 1.30pm Ploughman's Lunch

### **One Off/Annual/Irregular Events**

5th & 6th	6th Eaton Bray Village Hall Beer Festival, 5th: 6-11pm, 6th: 12-11pm, £3
6th	Eaton Bray Methodist Church Cream Teas, 2-5pm, Chestnut Lodge, Leighton Road, Great Billington
8th	Eaton Bray Village Hall AGM, 7.30pm
13th	Eaton Bray Lower School Summer Fayre, 12-2.30pm
13th	Evening of Ancient & Modern Egyptian Dancing, 7.30pm, Eaton Bray Village Hall, Box Office 01525 853360
14th	Open Gardens, 12-5pm, Eaton Bray Village Hall, Adults £4
19th	EDaN Youth Beetle Drive 7-9pm, Edlesborough Memorial Hall, £1.50 for ages 8-13, contact 01442 842550
20th	Eaton Bray Lawn Tennis Club Play Tennis Day, 12 noon - 3pm
23rd	Northall & District Age Concern AGM, 7.30pm, Coffee Tavern
26th	Dagnall Under Fives & Friends of Dagnall School Ladies Pamper Evening, 7.30-10pm, Dagnall Village Hall, £3
27th	Edlesborough School Summer Fayre, 3-5pm
30th	NSPCC Coffee Morning, 10am-12 noon, The Mill, Edlesborough, £2

**Best Kept Village**  
Edlesborough is entering the Best Kept Village competition. Judging will be in June. Please make sure your garden is tidy.

● NSPCC

## Coffee Morning

By kind permission of  
Richard and Ann Grant  
at



**The Mill, Edlesborough**  
**10am till 12 noon**  
**on Tuesday 30th June**

Tickets £2

Small Cakes and Raffle

Registered Charity No.216401



THE CHILTERN  
DOWNS METHODIST  
CIRCUIT  
Needs

### A CIRCUIT ADMINISTRATOR

The post is for 15 hours a week to support the Methodist Churches in the South Beds area. This is a one year post based in the Dunstable church office.

For more details and an application pack please contact: Roger Owers, 23 Reach Lane, Heath and Reach LU7 0AL  
T: 01525 237993

Email: [owersrj@googlemail.com](mailto:owersrj@googlemail.com)

Applications please by 13th July for interviews on 11th August to start in September.



**The Grove Infant  
& Nursery School,  
Dark Lane, Harpenden.  
HERTS. AL5 1QD**

The Grove Infant & Nursery School, in Harpenden are having a reunion for former pupils who joined the school in 1964 – 1971 and who will therefore be turning 50 this year.

Other year groups are also welcome to attend and help to make this a happy and successful evening.

The Reunion will take place on Saturday 27th June 2009 at 7.00pm. Tickets are £5 and this will include nibbles and a glass of wine.

Please contact Susan Brind nee Sparshott for tickets on [suzie667@tiscali.co.uk](mailto:suzie667@tiscali.co.uk)

If you were a pupil at Grove, please pass this information on to anyone that you are still in contact with and help to raise some money for our infant school.

We look forward to welcoming you to our 50th year celebrations.

## EXCHANGE & MART

### FOR SALE

Small Oak Welsh dresser £25

Oak TV stand £10

Oak Corner unit £20

Rose coloured Double Headboard £15

Thomson 27inch TV with remote £45

Phone: 01525 221733

### FOR SALE

Conway Cruiser Folding Camper 1991  
6 berth - Green/beige

Immaculate condition throughout

Full size awning & various accessories

Viewing recommended

£1000.00

Tel: 01525 220523

*CSL*

*Charvet Services Ltd*

## *Plumbing & Heating Engineer*

*40 years experience/CORGI registered*

*Full central heating installation, boiler changes, all heating repairs*

*Landlords Gas safety certificates*

*Complete plumbing service - bathroom refurbishments including tiling  
and electrical work*

*Underground drainage/blocked pipes etc.*

*Free Quotations • No call out charge • No payment until complete satisfaction*

***Telephone: 01525 221052 - Mobile: 07721 625887***

**comput@mation**

it support & after-sales services

### **Services:**

After-sales for any PC  
IT support  
Wired and wireless network installations  
Internet & email assistance

### **Troubleshooting:**

Windows troubleshooting  
Virus & spyware removal  
Fault diagnostics, repairs & upgrades

### **Sales:**

Custom PC's  
Computer hardware & peripherals  
Software

**On-site visits - office hours or evenings by appointment**

## **Computamation Services Ltd**

**40 Lake Street, Leighton Buzzard, Beds LU7 1RX**

**Contact John Wallace on Tel: 01525 378939 or Mob: 07968 536068  
email: john@computamation.co.uk web: www.computamation.co.uk**

# **Carpet & Upholstery Cleaning**

**Professional & Local**

**All work guaranteed - not happy, don't pay**

**Powerful equipment means drier much  
quicker than other methods**

**100% Guaranteed no chemicals left in carpet  
when dry therefore will not easily resoil  
& perfectly safe for children & pets**

**Recommendations account for 90% of my work**

**Absolutely no hard sell**

**Telephone Colin for a Free Quote**

**DEEP-CLEAN**

**01525 851 811**

**[www.deep-cleaners.co.uk](http://www.deep-cleaners.co.uk)**

**Email: [colin@deep-cleaners.co.uk](mailto:colin@deep-cleaners.co.uk)**

**EDLESBOROUGH SURGERY 01525 221630**

**Cow Lane Edlesborough**

**Dr M R Jones, Dr J R Bell,  
Dr Stephanie Johnston, Dr Helena Verwey**

**We offer a full range of health services at the surgery**

**EDLESBOROUGH PHARMACY 01525 223181**

**Pharmacist - Claire Clarke**

**Friendly, reliable professional service at the pharmacy  
All doctors, dentists and hospital prescriptions dispensed  
Professional advice always available**

**Herbal/Homeopathic products available**

**In addition-Disability Aids, e.g. wheelchairs, walking frames**

**Incontinence Aids, Ostomy Products**

**Special Orders on Request**





Quality Flooring  
and Installation  
at Affordable Prices

- ◆ Laminate
- ◆ Carpets
- ◆ Real Wood
- ◆ Karndean Vinyl

For a FREE, no obligation quote, please contact me, Michael Bishop, on either number and I will be happy to visit you in your home.



Master Fitter

"Excellent service and a beautiful floor expertly installed. I would highly recommend Aspley Flooring" *S.Stilliard, Edlesborough.*

"Your workmanship has created a beautiful floor, I shall have no hesitation in recommending you or using your services again" *A Satisfied Customer, Edlesborough.*

t: **01908 587332** m: **07977 575010**

[www.aspleyflooring.co.uk](http://www.aspleyflooring.co.uk)

## 30 Years Experience Domestic & Commercial Security



- Burglar Alarms
- Redcare Monitored Systems
- Intercoms
- CCTV
- Access Systems
- Locks



CERTIFICATE NO. NAC/G/2113

Quality Installations – Competitive Prices  
Insurance Approved Free Surveys

# AAA SECURITY

## 01525 378222

Slicketts Lane, Edlesborough, LU6 2JD





**YOUR ONE STOP SHOP FOR:**

Hot Tubs/ Spas • Swimming Pools  
Pool & Spa Chemicals • Splash Pools

**AZURE POOLS  
& HOT TUBS LTD**

Leighton Buzzard Garden Centre, Hockliffe Road, Leighton Buzzard.  
Tel: 01525 854000 • [www.hottubs4u.co.uk](http://www.hottubs4u.co.uk) • [www.azure-pools.co.uk](http://www.azure-pools.co.uk)

# P. DYER ELECTRICAL

*For all your Electrical & Testing & Inspection needs*

- *Re-wires*
- *Decorative Lighting*
- *Testing & Inspection*
- *PAT Testing*
- *Security Systems & Lighting*
- *Fuse Boards*
- *LED & Low Energy Lighting*
- *Fault Finding & Repairs*

Fully insured, Part P registered, all work guaranteed. Fast, friendly, reliable, local electrician. For a free, no-obligation estimate, call Paul on:



**Tel: 01525 222109**  
**Mobile: 07850 682815**



## UNICORN WINDOWS

FREEPHONE 0800 092 5212

“WHERE QUALITY & SERVICE ARE NOT A MYTH”

**Windows**

**Doors**

**Conservatories**

**Guttering**

- Internally glazed for high security
- High security locks on all windows, doors and conservatories
- Full 10 year insurance backed guarantee



## UNICORN WINDOWS

Unit 3&4 Youngs Industrial Estate, Stanbridge Rd,  
Leighton Buzzard, Bedfordshire LU7 4QB

FREEPHONE 0800 092 5212

[www.unicornwindows.co.uk](http://www.unicornwindows.co.uk)



PROFILES

FENSA



EDLESBOROUGH  
TENNIS CLUB

Website by [LJptarwell](#)

[www.etctennis.org](http://www.etctennis.org)

Play tennis    Have fun    Socialise    Feel good    Join our club

Join via the website, or call Iona McLean-Hall on 01525 220562 for details

## Samaritans of Luton, South Beds & Harpenden.

We are always looking for volunteers to man our phones 24 hours a day, 7 days a week, 365 days a year.

Whatever the time of year there will always be people who are not feeling full of the joys of spring, for many different reasons.

Samaritans are always there at the end of the line, waiting to take the calls come rain or shine, month after month, year after year.

But our job would be made harder without our 'Friends' who fundraise for us, so that we don't have to worry about paying our phone bill, when we phone a caller back who is worried about paying theirs.

We need both types of volunteers at our 'Branch' in Luton, and we welcome people from all backgrounds. If either of these volunteering opportunities is what you are looking for please contact us, there is no obligation, you will have to like us first. It isn't for everybody. We listen without prejudice. We don't tell people what to do. We don't judge.

Could you do that?

Maybe you would just like to help raise the money that helps our Branch to keep running smoothly. That would be fantastic too because support volunteers are just as much a part of our Branch.

Either way please contact us on 07807 892681 to book a place on our Introductory Day or email us on:

[luton.publicity@samaritanseast.org.uk](mailto:luton.publicity@samaritanseast.org.uk)



## Eaton Bray Lawn Tennis Club



Don't forget our annual Play Tennis Day, which we're holding as part of the National Lawn Tennis Association's 'Play Tennis' days. It's on Saturday 20th June at the courts from 12.00am to 3pm.

This is a free tennis taster session for both adults and children, members and non-members, so you can bring along as many friends and family as you can muster;

we'll have spectacular offers available for any new members joining on the day! We'll be having a go at putting up our gazebo, and if it's windy it's worth coming along just to watch that event alone; last year never had so many committee members had so little success in so long a time in such strong a wind. It didn't help that the instructions blew away as soon as we opened the box and flew off towards Billington, so bring your camera; it could be worth a shot of us all crumpled in a heap in the mud underneath various poles and a hundred square metres of uncomplying white canvass. Anyway, once we do get it up, there'll be lots of fun tennis related games and activities, competitions such as Fastest Serve and Longest Rally against the Coach, free giveaways, tennis equipment and clothes for sale, plus our famous BBQ (small charge applies but there'll be up to 48 menu options)! Our ball machine may make a special appearance too... so come along and have some fun for a few hours, even if just to sit in the sun with a burger and chips (bring your own chips...)

The recent blue skies have encouraged our fair weather players back onto the courts for our social tennis sessions on Sunday mornings and Tuesday evenings. In fact our Tuesday evening session has been extended to run from 6pm to 9pm, so that those who may work late still have the opportunity to come along. Last Sunday morning was a good example as 15 finely honed athletes demonstrated their skills, competitiveness and amazing fitness levels. Then I switched off the rugby, and went down to the courts for some tennis to join a dozen somewhat different looking individuals, but nonetheless equally enjoying a gentle run-around in the sun and hitting a few balls now and then, when one fortuously went anywhere near a racquet. My best effort was a thunderbolt of a backhand that headed straight for the tramlines; unfortunately they were those in Birmingham rather than on the courts. Then I was aced by membership secretary Jon Moon; thinking back I'd had time to make a cup of tea whilst that ball went past me but I still missed it. I made a mental note to work on my reflexes. Well, work on them when I get some.

The summer South Beds league season has started with, I think it's fair to say, mixed results so far. Whilst our Ladies team is performing admirably, the team I represent, the infamous Men's D team, has been less fortunate. Our last outing was to Flitwick and Amptill where the highlight of the evening was a spectacular tea of crusty baguettes, ham, cheese, pasta salad, coleslaw and tomatoes, all consumed in their clubhouse in the company of their adopted cat 'Hoop'. It certainly made up for our performance on court, where we didn't unduly trouble the scorers. Team captain Glenn Wigley is a great motivator however, and told us we'd all played to the very best of our abilities. Which unfortunately weren't good enough and so we're all dropped. Well that's what I think he really meant, but he was very nice about it. I look forward to my next call-up and promise to do better next time. I really must focus on the tennis part of the evenings, rather than spend my time on court trying to lose as quickly as possible so I can get to the after-match tea and choose the largest piece of baguette.

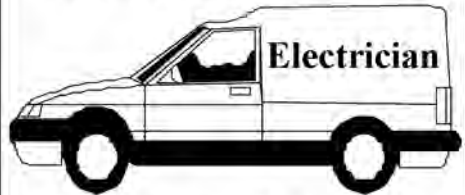
For any further information about the club, including when we get together for our social tennis sessions up at the School Lane courts, or our various activities, you can visit our website at [www.ebltc.org.uk](http://www.ebltc.org.uk); alternatively call Bernadette Hillman on 01582 602587, Coach Nick Boys on 07810 832774, or if they're all out and I'm not having an argument with a gazebo, me, Andy Cross, on 01582 477114.



**M.J. BROUGHTON**  
**QUALITY DECORATING**  
*Interior and Exterior*  
 ALL WORK CARRIED OUT TO THE HIGHEST STANDARD  
 For a free estimate with no obligation ring  
**01525 - 222764**  
 8 SUMMERLEYS, EDLESBOROUGH.

**P.J. BRINKLOW**

**Electrical Contractor**



**Most types of electrical  
 work undertaken**

**Tel; 01525 220469**

**Mob; 07860 781330**

**43, Pebblemoor,  
 Edlesborough**

**Janes**

**Carpets and Flooring**



We carry a wide range of  
 Weaves, Twists & Natural Carpets Vinyl & Quick Step Laminate  
 KARNDEAN The warm alternative to WOOD & CERAMIC TILES

**AFFORDABLE & COMPETITIVE PRICES**  
**NO DEPOSIT**  
**INVOICE ON COMPLETION**  
**SAMPLE TAKE AWAY SERVICE**

We are happy to visit you at your home For a FREE no obligation quote.

**High Street Edlesborough Nr Dunstable Beds. LU6 2HS Tel: 01525 220208 [www.janesltd.co.uk](http://www.janesltd.co.uk)**

# CHARTERED ACCOUNTANT



**01525 221676**

**OPEN 7 DAYS / EVENINGS  
FRIENDLY LOCAL SERVICE  
VERY COMPETITIVE FEES**

**MIKE SUTCLIFFE, MBE**

Please visit my website  
[www.mikesutcliffe.com](http://www.mikesutcliffe.com)

213 CASTLE HILL ROAD, TOTTERNHOE, BEDS, LU6 2DA

## Stretch your child's imagination in three directions at once.

**HERE'S** a way to spend weekends that'll have 4-16 year olds buzzing. Enrol them in Leighton Buzzard's Stagecoach Theatre Arts School where for three hours they learn to act, sing and dance.

The skills they learn aren't just for the stage. They grow in confidence, self-reliance and self-esteem. Stagecoach training is for life. You'll see new sides to your youngsters you'll want to applaud.

There's no interview, they take no audition. Enthusiasm is all they need. For a Prospectus, call Wendy Ashman at Stagecoach Leighton Buzzard on 01525 222715.

[www.stagecoach.co.uk/leightonbuzzard](http://www.stagecoach.co.uk/leightonbuzzard)



**STAGECOACH**  
THEATRE ARTS SCHOOLS

[WWW.STAGECOACH.CO.UK](http://WWW.STAGECOACH.CO.UK)



## *Patricia's Cuisine*

Catering For All Occasions

- Buffets, Dinners •
- Christenings, Weddings, Funerals •
- Promotions & Business Lunches •

*For Enquiries & Menu*

Meadside Farm, 104 High Street,  
Eaton Bray, Bedfordshire, LU6 2DP

**Telephone: 01525 222174**

## **BARRY CATO**

### **MOTOR REPAIRS**

*Servicing, repairs and  
MOT's arranged*

**Workshop at:**

r/o Norfolk House Farm, Harling Road  
Eaton Bray, Dunstable, Beds, LU6 1QY

Tel: 01525 221681 (workshop)

07836 650015 (mobile)



## Domestic & Commercial Cleaning Service

- Fully Insured
- Family Business
- Free Quotes
- References Available
- Window Cleaning
- Rental Cleans

- Carpet Cleaning
- 2 Bed Home = £60
- 3 Bed Home = £75
- 4 Bed Home = £85

Tel: 01296 748960

Mob: 07909 934168 / 07796 406717



## BRIAN'S SCHOOL OF MOTORING

grade 5 driving instructor  
pass plus registered  
excellent pass rate  
block booking discounts

Tel: 01582 535689

Mobile: 07958 348086

Email: [bbates.1@ntlworld.com](mailto:bbates.1@ntlworld.com)

[www.briansschoolofmotoring.org.uk](http://www.briansschoolofmotoring.org.uk)



Blockpaving, Patio Specialists and  
Groundwork undertaken

Telephone 01582 704495

Mobile 07958 717248

Free Quotations

# EDP

## EDLESBOROUGH DENTAL PRACTICE



- Cosmetic Dentistry
- Tooth Whitening
- Dental Implants
- Wrinkle Correction Therapy

11 cowlane | Edlesborough | Dunstable | Bedfordshire | LU6 2HT

t: 01525223175

w: [www.edlesboroughdentist.co.uk](http://www.edlesboroughdentist.co.uk)





# High Street Hair

66 High Street  
Eaton Bray  
Nr Dunstable Beds

01525~221252

Specialising in advanced colouring, cutting and styling techniques. Professional, friendly and affordable service for the whole family.

  
a new religion for hair



# GATES

Plumbing & Heating Ltd

Specialising in all types of  
Plumbing, Gas & Oil Heating

We now offer **Solar Heating** as part of our portfolio, please contact us for a free estimate

**Tel: 01296 670445**

Email: [plumbing@gates100a.fsnet.co.uk](mailto:plumbing@gates100a.fsnet.co.uk)

CORGI & OFTEC registered

# Wills, Probate & Lasting Powers of Attorney



**Tony Duke**, Sovereign's highly experienced Regional Director, will ensure your Will matches your specific requirements.



## YOUR PRIORITIES? YOUR REQUIREMENTS?

- avoid Inheritance Tax
- minimum future long term care fees
- the best provision for children
- protect home from an enforced sale

You receive a very personal IN-HOME service, benefit from the fullest legal protection, and have your documents prepared by solicitors who specialise in Family Law. Fees are very competitive including **discounts on Family Estate and Care Packages.**

CALL TONY ON:

# 01525 220644

for a daytime or evening appointment in your home.

Provider of **solicitors'**  
**IN-HOME Will writing**  
**services** locally and  
throughout the UK



EST 1995

## PINSTRIPES

SPECIALISTS IN SIGNS & GRAPHICS

- CAR BIKE VAN & TAXI GRAPHICS
- LORRIES & HORSEBOX GRAPHICS
- WHEELCOVERS
- VEHICLE MAGNETICS
- ONE WAY VISION SIGNS FOR WINDOWS
- VINYL CUT LETTERING & LOGOS
- A BOARDS & PROJECTING SIGNS
- BUILDERS BOARDS
- SHOP SIGNS
- WINDOW GRAPHICS & FROSTING
- FULL COLOUR DIGITAL PRINTING
- STICKERS POSTERS CANVAS & PHOTOS
- SAFETY SIGNS VARIOUS LABELS & BADGES
- BANNERS BUNTING FLAGS
- ENGRAVED SIGNS & DOOR PLAQUES
- ACRYLIC PERSPEX & METAL 3D LETTERING
- BUSINESS CARDS LETTERHEADS FLYERS
- T SHIRT PRINTING

# 01525 220485

# 07973 167779

THEPINSTER@HOTMAIL.COM

WWW.PINSTRIPES-SIGNS.CO.UK



# 01525 377185

[www.crockadoodledoo.co.uk](http://www.crockadoodledoo.co.uk)

*Crockadoodledoo*  
Original ceramics... painted by YOU!

NEW STUDIO NOW OPEN AT  
LEIGHTON BUZZARD GARDEN CENTRE

[info@crockadoodledoo.co.uk](mailto:info@crockadoodledoo.co.uk)

## Curtains 4 u

Jan Robinson

Phone/Fax: 01442 843454

Mobile: 0777 9029140



Curtains with a  
certain Flair

Very competitive rates for  
all your soft furnishing needs.  
Hand finished curtains a speciality  
Alterations and own fabric work undertaken

# in good spirits mobile bars

tel/fax: 01525 220443

mob: 07702 712856

ellie@ingoodspirits.co.uk

www.ingoodspirits.co.uk

## HALL FOR HIRE

• Bar & Kitchen

• Discount for Villagers

• Membership Available

**EATON BRAY**

**SPORTS & SOCIAL CLUB**

*For Details phone:*

**07709 725803**



## Your Village Estate Agents

Independently owned and established for over 35 years, fully staffed by experienced mature and professional people giving an expert and friendly service.

Call Tony Denson, Hilary Tootell, Hilary B or Julia now

**MOVE WITH THE NAME YOU CAN TRUST**

65 Moor End  
Eaton Bray  
LU6 2HN  
Opposite the Edlesborough Post Office

Tel: 01525 221313

[www.densons.co.uk](http://www.densons.co.uk)



## The three **aa**ghs Reading, writing and arithmetic.

Even the most angelic children need a solid foundation in maths and English.

Kumon programmes:

- work at a pace tailored to your child's needs
- give their confidence a real boost
- develop invaluable study habits and concentration

Contact your local Instructor today.

**DUNSTABLE study centre**  
Christina Wade • 01525 222 505  
dunstable@kumoncentre.co.uk

kumon.co.uk

**KUMON**  
50<sup>TH</sup> ANNIVERSARY

## All Plumbing Repairs and Installations

### Domestic & Commercial

- Dripping taps
- Sinks
- Overflows
- Boiler Changes
- Cylinders & Tanks
- Immersion heaters
- Showers & Bathrooms etc
- Leaks, Bursts & Blockages
- Insurance work undertaken



No call-out charge, free estimates

**D. NICHOLSON PLUMBER**

**01525 872335**

Mobile: 07976 975604

## **Eaton Bray with Edlesborough Parish News**

Hon. Assistant Priest: The Revd John Heffer, 35 Pebblemoor, Edlesborough - Tel: 01525 220618. Churchwardens: Chris Banks (221556) and Peter Bennett (221284)

I suspect many people would be surprised by the amount of time I spend working and relaxing in my garden, but it's a hobby I really enjoy. The annual cycles of the changing weather patterns and of preparing the ground, sowing and harvesting help to make me more aware of God's creative power. Springtime in the garden is a period of intense activity with beds to prepare, seeds to sow, lawns to tend and weeding to be done. It is a time when the miracle that is nature seems to be most evident. What once appeared dead is now alive and blossoming. After a cold and snowy winter the world has come back to life and the birds can't wait to start singing to welcome in each new day.

No doubt, many of you have been busy in your own gardens and, perhaps, on a particularly sunny afternoon you may have even joined in with the singing of the birds. Yes, of course, you will probably have experienced an aching back for your hard work, but that is no reason why you shouldn't pause to sing God's praises.

Now, with the long hot days of summer upon us we can hopefully look forward to a warm and pleasant summer. This month, on 14 June, some people will be opening their gardens. I hope you will support their efforts and join in what has become one of the most relaxed and enjoyable social events in our villages. By supporting this event you will not only help to raise money to be shared between St Mary's Fabric Fund and our Parish Project, Merlin, but you will also be able to join in the most excellent of jobs that can be done in a garden – simply to stand back, to look and gaze in wonder - What is this life if, full of care, we have no time to stand and stare?

For, if you pause and give yourself half a chance, you might just catch a glimpse of the wonder of God. You may see it in a rosebud, or a daisy; you may smell it in a newly mown lawn; you may hear it in the sound of the birds or feel it in the warmth of the afternoon sun. The transformation of a compost heap from kitchen waste to finest soil may help you to recognise the transforming and loving power of God in your own life to bring good out of the worst human circumstances.

And, just as seeing someone else's garden may inspire you to go and plant some seeds of your own so, if you get into the habit of looking for, and seeing, God in your life, you may find yourself sowing different kinds of seeds – seeds of kindness, seeds of love, seeds of joy. And you may begin to clear out some of the weeds that invade the little patches that are our lives. Some can be easily handled – weeds of grumbling, impatience and pettiness - others are more deeply rooted and need more effort to eradicate - weeds of hatred, anger, pride and violence.

Yes, life can be like gardening but, unlike gardening where certain times are best for sowing or weeding, in life we can sow good seeds at anytime. Just think what a difference it would make if everyone of us made a special effort to sow just a few good seeds every day.

Gordon, Reader at St Mary's Eaton Bray

### **BAPTISMS, WEDDINGS AND FUNERALS**

Enquiries for these should be made in the first instance to:-

BAPTISMS – Mrs Eileen Bennett (221284)

WEDDINGS & PROCLAMATION OF BANNIS – Mrs Jenny Hewett (220295)

FUNERALS – Mr Peter Bennett (221284)

or leave a message at the Parish Office (222254)

## Services at St Mary's Church

**SUNDAYS :**      **8.00am** – The Eucharist  
                         **10.00am** – PARISH SUNG EUCHARIST (with Sunday School)

### On Third Sunday of each month:

**10.00am** – WORSHIP FOR EVERYONE a shorter, less formal service (Those who wish to attend a Communion Service on that Sunday are reminded that there is a Family Communion at 10.30am at All Saints', Dagnall, where they are assured of a warm welcome.)

### WEEK-DAYS :

**Tuesday:**      **2.00pm**      (2nd Tuesday) – Toddlers' Church

**Wednesday:** **9.30am** – Eucharist

*EVERYONE WELCOME AT THESE SERVICES*

## Acupuncture & Physiotherapy

Acupuncture is a form of Chinese medicine and involves the insertion of very fine needles at key points in the body.

In Chinese medicine it is thought that the human body is controlled by "Qi" (energy life force) and Qi flows through the body in channels known as meridians.

When Qi is disturbed or unbalanced, problems can occur and by inserting needles you can help release any blockages in the energy flow.

Recent research has shown that acupuncture helps the body to release its natural painkillers, known as endorphins.

The main use of acupuncture within physiotherapy is to ease symptoms of pain and discomfort. Acupuncture can therefore be suggested as part of your physio treatment. Before you begin acupuncture, the physiotherapist will carry out a detailed assessment of your general health and medical history as well as your current symptoms. Everyone has a different experience with acupuncture. Most people feel relaxed after treatment, some may feel quite tired or even alert and energised.

The most common problems that physiotherapists may use acupuncture for are:

- Recent, sports and whiplash injuries.
- To help with long-term chronic pain such as arthritic pain and back and neck pain.
- Treatment of recurrent headaches and migraines.
- To alleviate muscular spasm to help restore correct movement.
- To alleviate other symptoms associated with pain and injury such as poor sleep or stress.

Acupuncture is often combined with traditional physiotherapy treatment techniques for best effect. The physiotherapists at St Judes Clinic who carry out acupuncture are all members of the Acupuncture Association of Chartered Physiotherapists (AACP).

So if you are in pain and feel that you may benefit from acupuncture or physiotherapy please contact St Judes on:

**Tel: 01525 377751, 26 Lake Street, Leighton Buzzard, LU7 1RX**

**E-mail: [enquiries@stjudesclinic.com](mailto:enquiries@stjudesclinic.com) Web: [www.stjudesclinic.com](http://www.stjudesclinic.com)**

*by Physios; Nicki Lake & Amanda Sinclair*



*Dunstable*

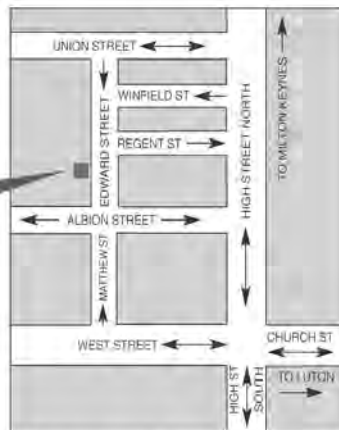
# LAMINATES

email or fax your requirements  
for a free quote or why not  
take advantage of our free  
home measuring service

cutting and edging service  
available

why not visit our show room -  
you'll be amazed at the choice

we are here



47 Edward Street, Dunstable,  
Bedfordshire LU6 1HE  
Tel: 01582 668973 Fax: 01582 608227  
Email: sales@dunstablelaminates.co.uk  
Web: www.dunstablelaminates.co.uk

THE **WORKTOP** specialist



## James B Chadburn MBHI

Fine Antique clocks & Barometers

Specialist in repairs &  
restorations.

Valuations & clock  
finding service.

Advice & assistance on  
formation & disposal of  
private clock collections.

Quality clocks/barometers  
Bought & sold.



Telephone 01525 221165

Mobile 07790 000629

E-mail: [jbchadburn@lineone.net](mailto:jbchadburn@lineone.net)



**Café  
masala**  
*Exquisite Indian Cuisine*

We Cater for Office or Private Parties and don't  
forget to try our Sunday Buffet

10% Discount on all Takeaway Orders Over £12

Fully Licensed & Air Conditioned

Open Seven Days a Week

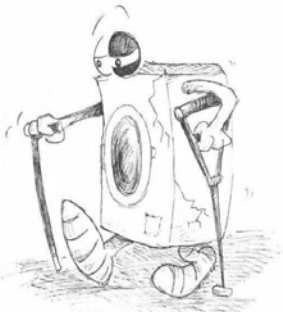
Hours: 12 Noon to 2.30pm & 6.00pm to 11.30pm

**Tel: 01525 22 22 64**

63 Bower Lane · Eaton Bray · Dunstable · Beds · LU6 1RB  
email: [taraque@hotmail.co.uk](mailto:taraque@hotmail.co.uk) · [www.cafemasala.com](http://www.cafemasala.com)

## WASHING MACHINE REPAIRS

ALSO  
DISHWASHERS, TUMBLE DRIERS,  
AND ELECTRIC COOKERS



Call  
**ANDERSON D.R.S.**

**01582 665764**

[www.andersondrs.co.uk](http://www.andersondrs.co.uk)  
SALES AND RENTALS AVAILABLE

Buy Direct From Our  
Own Farm

Master Card

VISA

From **Ivinghoe Turf**

- Commercial & Domestic
- Small Orders Welcome
- Bark, Grass Seed & Fertiliser
- Laying Service
- Discount on Larger Orders
- Screened & Blended Topsoil
- All Year Availability
- Forklift Delivery Available



**ROLAWN**®  
Approved Rolawn  
Stockist

Family firm farming since 1949

**ALL AREAS**

Freephone :

**0800 043 5061**

[www.ivinghoeturf.com](http://www.ivinghoeturf.com)

The Bungalow, Vicarage Farm, Ivinghoe, Leighton Buzzard

## AARON FENCING

ALL TYPES OF DOMESTIC & COMMERCIAL  
FENCING & DECKING WORK UNDERTAKEN

- FREE ESTIMATES
- FULLY QUALIFIED & INSURED
- PERSONAL SERVICE AT COMPETITIVE PRICES

**TEL: 01582 665779**

**MOBILE: 07798 927272**

7 STATION ROAD, DUNSTABLE, LU5 4HS

## ARC Contract Services Ltd

- Wallpapering and painting
- Laminate Flooring • Coving
- Tiling • Bathroom installations

Quality work at affordable prices  
Insurance work undertaken  
All work guaranteed for 5 years  
Public liability insurance cover



FOR FREE PROFESSIONAL QUOTATION  
CONTACT ADRIAN ON: **01582 539179** or  
**07789 730580**

## Garden Care

of Slapton

Traditional Garden Maintenance  
and Landscape Services

Free Estimates & Advice

Telephone Eaton Bray 221454

Mobile 078302 86837

cardio strength stretch



MON 7.45pm Brewers Hill Sch  
WED 7.45pm Queensbury Sch  
THU & SAT 9.30am St Mary's  
Eaton Bray Village Hall  
THU 7.30pm Legrave Primary  
Tel: Angela 01525 715208

**jazzercise**® *\*FREE CLASS  
WITH THIS AD\**

# **Gas Boiler Servicing**

Over 30 years experience

Have your boiler serviced by a  
CORGI registered engineer from £60

Other services available:

Maintenance, repair and installation of all domestic  
gas appliances, including L.P.G.

Boiler installations, landlord safety certificates,  
power flushing, pre-purchase surveys and plumbing.

Free Quotes, no call out fee, and free  
friendly advice on all of the above

**Edwards Gas &  
Heating Services  
Eaton Bray**

**Tel 01525 220626**

Email:

**[stevethegas@orange.net](mailto:stevethegas@orange.net)**



*TMS Chauffeur  
Services*

Luton	£20.00
Heathrow T1,2,3	£50.00
Heathrow T4,5	£55.00
Gatwick	£75.00
Stansted	£65.00

**London, Theatres, Stations,  
Ports. Distance no object.**

**For a professional reliable  
service call:**

**01582 667710**

# **Will Kimberley Garden Services**

## **01442 255784**

**Phone for a free no obligation  
written estimate.**

**Fiona@wkgardenservices.co.uk**

- High hedges a speciality
- Overgrown gardens cleared
- Fences erected and repaired
- Tree Lopping
- Fruit tree pruning
- Shrub trimming
- General garden tidy up's
- In fact any job in the garden!

## **Stephen Brewer FCCA**

offers a friendly and personalised  
comprehensive service covering:

**Accountancy - Taxation**

**- Self Assessment -**

for

**- Individuals -**

**- Partnerships -**

**- Limited Companies -**

Advice from a qualified professional  
at an affordable fee

**For a free initial consultation at  
your home or workplace, phone:**

**01234 290333 or 07810 526286**

Baylor Wood Associates Ltd  
Chartered Certified Accountants

# **DELLS**

**UPVC WINDOWS  
CONSERVATORIES**

**FACIAS and SOFITS**

**RING ANDY - 01442 826359**

**MOBILE - 0795 738 6239**

**FREE ADVICE • QUOTATIONS**

# **TV VIDEO AUDIO REPAIRS**

**BOB SMITH**

**EATON BRAY 221722**

**ALL WORK GUARANTEED**

**FREE ESTIMATES**

# A warm welcome awaits you at The Village Swan



- \* Enjoy Real Ale and Fine Wines \*
- \* Excellent Homemade Dishes \*
- \* Traditional English Lunch & Evening Menu \*
- \* Fish & Chip Night - Thursdays - eat in or take away
- Curry Night - Fridays - eat in or take away
- Pizzas available till 10.30pm Tuesday to Saturday \*
- \* SUNDAY ROAST 12:00 until early evening \*

## BOOK TO AVOID DISAPPOINTMENT

Quiz Night 1st Monday of each month  
Safe Beer Garden \* Theme Nights

The Village Swan, Ivinghoe Aston, LU7 9DP

For more details of current events:

Tel: 01525 220544 or

Email: [TheVillage.Swan@virgin.net](mailto:TheVillage.Swan@virgin.net) or pop in and see us



**Naturally**

**Relaxed**

**Photography**

Ian is rapidly becoming one of the countries most sought after photographers. He is recommended by some of the local top hotels including The Grove and Hanbury Manor. Ian specialises in wedding and portrait photography with years of experience in capturing people's special moments. He is a qualified member of the Master Photographers Association and the Society of Wedding and Portrait Photographers.

*Ian Waldron*  
naturally relaxed photography

[www.ianwaldronphotography.com](http://www.ianwaldronphotography.com)  
0845 225 1771

Your Village Photographer  
Based at Sparrow Hall Farm - Edlesborough



## Edlesborough School

The children in Year 2 at Edlesborough School were asked to write an adventure story and this is Alex Sibley's story:

### A Different World

One day I woke up, drew the curtains and looked out of my window. It was another warm summer's day, so I opened my window to breathe in the fresh air and look at the beautiful blue sky and dark green grass. I was just about to go and ring my friend to ask if he wanted to go to the park with me when I found myself lifting off the floor and floating in the air, the next thing I knew I was shooting out of the window like a rocket!

I started to feel cold and as I looked around me I realised that everything I could see was covered in ice and the air around me was all misty. In front of me I could just about see that there was a castle made of ice. Suddenly I stopped at the entrance to the castle. There was a pretty girl wearing a long white dress made of snow and an ice crown, she had a beautiful necklace made of ice around her neck and she was staring straight at me.

The pretty girl spoke to me, "what are you doing here?" she asked, "Who are you?" "I am just a boy", I replied "and I don't know what I'm doing here, or even where I am". She told me that her name was Princess Diamond and she lived in the castle and that we were in Articaria, on Chilltern, the coldest planet in the universe. I told her that I thought I must be dreaming because none of the things that were happening to me made sense. She told me that if that was the case we should have some fun together.

Princess Diamond took me into the castle and gave me some warm snow clothes to wear and then we went back out into the cold air and she said she would take me to see the animals of Articaria. We walked and walked and on our travels we saw the same animals that live in the coldest part of our world, there were polar bears, caribous, wolves, musk oxen, wolverine, arctic foxes, ermine, lemmings, arctic hares, arctic ground squirrels, birds, whales, harp seals and walrus. All the different types of animals were living near each other in harmony and were not troubled by each other or us. They didn't have the same food diet as animals at home but instead ate Articaria fruit. Princess Diamond told me that the fruit was plentiful and came from hollows in the mountains of Articaria.

Next we took a walk to the mountains and there she showed me the fruit hollows. As I put my hand in the hollow, it felt soft and warm and the fruit I pulled out looked like white grapes. I tasted the fruits. The first tasted like meat and gravy and the second like pork with apple sauce. The third tasted like salmon with hot chilli sauce and the fourth like cheese on a cracker. This was great I could eat these all day. Princess Diamond told me that the fruit would taste like whatever you wanted it to and would give you the nutrients you needed to survive. This was the same for all those that ate it.

We walked back to the castle and she said that she must go now as it was time for her to carry out her Princess duties. She said that she hoped we would meet again. I stood there not sure what to do next. Suddenly I found myself lifting off the floor and floating in the air again, this was now a familiar feeling. The next thing I knew I was shooting into the air like a rocket and I found myself sitting in class at my desk. Mrs Allison was talking to me, "Alex, wake-up, you have been sleeping on your desk, did you have a late night last night?" "Yes Mrs Allison, I'm terribly sorry", I replied, "I was watching the football last night until very late". "Well Alex, I think I will need to speak to your Mum about this". Oh dear, I think I am going to be in trouble... THE END

# Dagnall News

## Over 60's

During April we had a visit from the ladies who are responsible for the ARK Wildlife Hospital in Milton Keynes. They gave us a fascinating talk on the work they perform to ensure the wellbeing of the wildlife in this area. It was a most enjoyable afternoon for our members, who responded suitably with generous raffle contributions, which were donated to the work of the hospital.

The committee of the Over 60's decided that we should make a donation to the Church from the proceeds of the concert in March. It was agreed that the sum of £150 be donated in recognition of the efforts they made towards the success of the evening. This was thankfully received on behalf of the Church.

On May 19th we welcome a visit from representatives of the Salvation Army in Eaton Bray.

On June 16th our traditional Ploughman's Lunch is on the menu.

## Dagnall Church

Over £300 was raised at the coffee morning held on 2 May at All Saints' Church. Proceeds in aid of the scanner appeal.

Date for your Diary

Saturday 18th July, Ploughman's Lunches 11.30am to 2.00pm in aid of the Church Project for 2009, The Paul Strickland Scanner Appeal, Mount Vernon Hospital.

Please support this event, which will feature the Cake stall and Bring & Buy stall.

## Dagnall School

Dagnall School would like to invite all past pupils, staff, governors, friends and anyone else who would like to attend our Centenary Celebrations on:

**Saturday 11th July 2009 2-4.30pm.**

Donations of cakes would be very welcome. Please contact Kathy at the school on 01442 842473 if you would like to attend.

### Evening

One cold, sparkly evening as the shimmering stars came out

The soft crystal clear raindrops fell into my curved hand.

Suddenly, a powerful gust of wind roared round the village.

The Oak tree branches shook and the yellow leaves rustled.

Year 2

## Dagnall Under Fives

We had a great spring learning about baby animals, mini beasts and growing things. The last topic prompted another visit to our allotment where the children had a chance to do lots of digging as well as planting beans and potatoes.

Thanks to a grant from Bucks County Council we have been able to have a soft play surface installed over the concrete area of our outside space. As well as looking much bigger and tidier, the new surface is now safer for the children when they use the ride-on toys. So our new carpet, as the children like to call it, has been a great success!



## Dagnall Village Hall

**Dagnall Dip:** Date dip drawn – 21 April 2009. Total dip collected - £223.50.

Amount to Village Hall Funds - £113.50. Amount for prizes - £110.

1st Prize – Lynn Salmon, £40

2nd Prize – Mandy Taylor, £30

3rd Prize – Rhona, £20

4th Prize – Mr Draper, £10

5th Prize – Sandra Greenfield, £10

Thank you to those who participated. Tickets will be on sale in July for the next Dagnall Dip.

---

### All Saints, Dagnall - Services in June 2009

Sun. 7th June	9.00 am	Eucharist
	10.30 am	Morning Service
	6.00 pm	Evening Service with Holy Communion
Sun. 14th June	10.30 am	Morning Service
	6.00 pm	Sung Eucharist
Sun. 21st June	10.30 am	Family Communion
Sun. 28th June	10.30 am	Family Service
Sun. 5th July	9.00 am	Eucharist
	10.30 am	Morning Service
	6.00 pm	Evening Service with Holy Communion

Sunday School meets each Sunday at 10.30 am



#### **Some comments from our recent Ofsted report (Jan 09):**

Children are consistently offered a stimulating range of activities and opportunities which enable them to make good progress towards the Early Learning Goals.

Staff have a good understanding of creating a safe and welcoming environment . . .

Staff support children well and encourage them to be active in their learning and to think critically.

We are a committee run playgroup operating five mornings a week 9:30 – 12:00 for children aged 2½ to school age.

**If you would like to find out if your child would be happy here, please phone our Playgroup Leader, Ann Tobin on 07816 358 342.**



## **EDaN Project Traffic Management Team**

The Traffic Management Team recently started an ongoing census, with a view to understanding the mix of vehicles using the A4146, and the extent of the problem of heavy traffic. We hope we will soon have sufficient information to compare past traffic figures with our current ones. Compare these with the volumes of traffic predicted following the completion of the Leighton Buzzard by-pass and we can gauge how the route is growing in popularity. The more the by-pass is used, the more vehicles will use the A4146 to access it and leave it through our villages. Heavy goods vehicles are a prime example of this, and we are not hopeful that our figures will show any long term decrease in the current levels.

Our team will also soon be at the road side recording traffic speeds using our new “Speedwatch” equipment recently purchased for us by the Parish Council. We hope that by continuously monitoring traffic speed we can dissuade both “through cars” and “through lorries” from using the A4146 as they would surely prefer routes where speed checks are not in regular use.

The actual speed of vehicles is not always the problem. The perceived speed and the lack of speed limit enforcement also affect our lives, and how we see the villages as safe places for our children to grow and play. National television news recently reported that there is to be a nationwide speed limit review. Our vehicle speed data could be used to influence local speed limits, and then, with the help of “Speedwatch”, sensibly enforce them. For example all HGV’s can travel at no more than 40mph on our rural roads no matter what the upper speed limit is, and of course at only 30 mph where applicable.

We hope that our efforts will help to improve all aspects of road safety within our villages, without causing annoyance or inconvenience to local residents and drivers. It must be noted, however, that if local roads, or sections of roads, are identified as having a speeding problem, the use of “Speedwatch” should trigger a police response to officially enforce the correct speed limit. This would involve the normal fines and penalty points for drivers caught speeding!

The Traffic Management Team is trying to lead from the front! We are all trying to drive at the correct speed limit, not just in our own villages, but in all the villages we drive through, showing the respect to others we are asking for ourselves. We admit that it is not easy, but let’s hope that the habit is catching and that more and more of us can do it!

The more drivers we can persuade to follow the same ethic, the easier our job will be. Please obey the speed limits. If you are driving at the correct speed, so is the vehicle behind you. And finally, when you appear on our data sheets, be there for being there, not for speeding!! Drive safely!!

David Gravestock                      davidgravestock@btinternet.com  
Lorna Cabbage                            lornacabbage@larums.com



---

## **EDaN Beautifying the Villages**

### **The Floodlighting of Edlesborough Church**

It seems that the most magnificent church in the area, which can be seen from miles around, remains almost the only one unlit. Together with Edlesborough Parish Council, we are aiming to rectify this. Our carbon footprint increased by this project will be offset by EPC and the wattage used kept to a

minimum, but with maximum effect. We aim to light the church from dusk till eleven p.m. We would invite the views of parishioners in Edlesborough, Dagnall and Northall towards this venture and would ask anyone with serious issues against it to e-mail [chris@brooklyns.org.uk](mailto:chris@brooklyns.org.uk). by the end of June please. Many thanks.

---

## **Mains Drainage for Postcodes LU6 2EE, 2EH, 2EJ & 2EQ**

### **Tring Road, Leighton Road, Pine Road - 38 Households Progress Report 3**

The following extract from an ANGLIAN WATER SERVICES LTD letter, dated 27th April 2009 details the latest position.

-----  
First Time Sewage Appraisal at Edlesborough (Section 101A, Water Industry Act 1991)

Our initial investigations have substantiated the existence of an environmental/amenity problem arising from the existing sewage arrangements in your area.

We now need to undertake an engineering assessment to establish the most cost effective solution to remedy the problem – the assessment will consider all options and their associated costs, including proper maintenance and operation of the existing system; reconstruction of the existing system with a similar system (i.e. like for like); any other solutions (e.g. improved land drainage, or the provision of a public sewer (in which case it will be necessary to determine the most cost effective public sewer solution).

The assessment will be undertaken by our Alliance consultant, who will contact you in September 2009 to explain the process in more detail.

-----  
It is gratifying to see that this application is being treated seriously.

See your 'FOCUS' magazine for future progress reports.

Talbot Griffiths (No. 5 Leighton Road)

---

## **Edlesborough W.I.**



Our April meeting was the annual Members' Night. This is when the evening programme is arranged by members other than the committee. However, the usual business is dealt with first of all on such occasions. Yvonne Needham was congratulated on becoming 80 years old, and 3 visitors were welcomed to our meeting. Elizabeth Braiden was thanked for arranging the very successful visit to Anna & Roger Skipper's lovely garden.

Members' Night this year was in the hands of Christine Yates and her band of helpers, and what an enjoyable time it was. To begin, Chris presented a gift of bulbs to each committee member, so our gardens should look very colourful! To follow, we all took part in a quiz, part of which was on the history of Edlesborough. I think some of us learned a number of local facts! We were very competitive; in fact, there had to be a play-off for first place. Prizes went to teams coming first and second.

After tea and cakes, members were asked to vote on their favourite photo in a display of village scenes taken by us all. These were really quite professional, and it was difficult to choose between the varied and beautiful photos. A view of Edlesborough Church in the snow, taken by Heather Lewis, was the winner. Mavis Purcell came second with her photo of the Ford, looking over the bridge. There were some fantastic views, and it was a pleasure to see them.

After the raffle, which included some lovely prizes, Chris and her helpers were thanked for making the evening such an enjoyable one. Val Harris

*Love Through a Lens  
Wedding Photography*



*Simon & Stuart*

*Home: 01525 229 397*

*Mob: 07778 236 458*

*www.lovetroughalens.co.uk*

**COFFEE TAVERN**

**High Street, Eaton Bray**

Hall for hire suitable for approximately 50 people with kitchen facilities available. Also two smaller rooms ideal for committee meetings

**FOR BOOKINGS:**

**PHONE SYLVIA HIGNELL**

**ON 01525 220891**

Thinking about a new lawn, patio or complete garden makeover?

For a free, no obligation quote phone:



**David Gooch  
LANDSCAPING**

*& Gardening Services*

**Tel: 01296 660628  
Mob: 07976 227785**

**Garden Design  
Lawns • Patios • Driveways**



For all your plumbing & gas requirements

**01582 481525**

General Plumbing • Servicing • Breakdowns & repairs to Gas Boilers inc. L.P.G. • Gas Fires • Warm Air Heaters • Cookers • Unvented Hot Water Heaters • Central Heating Powerflushing • New Radiators • Cylinders and Water Tanks

**CORGI Registered & Fully Insured**

**www.plumbingandgas.org.uk**





**BEFORE**



**& AFTER**



## MISTY DOUBLE GLAZING ?

**KEEP YOUR WINDOW FRAMES....**

**....WE JUST REPLACE THE GLASS!**

- UPVC • Aluminium • Or Wood

Because we replace just the glass the repair is a

**FRACTION OF THE COST**

of a complete replacement window.

# QUALITY GLAZING SERVICES

## 01525 876808

**UPVC  
frame  
cleaning  
service  
available**

**We also replace Broken...**

- Glass • Handles • Hinges  
& Locks

**and Repair... Patio Doors & Conservatories!**



# REVIVE

## HOLISTIC THERAPY

Holistic therapies are concerned with treatment through massage, manipulation and relaxation. They are not only treatments for one physical ailment or one part of the body, but also treat the person as a whole.

Ideal for today's stressful lifestyles.

Treatments include:

Aromatherapy Massage

Indian Head Massage

Reflexology

Reiki

Crystal Therapy

I also run Reiki courses so you could learn how to become a Reiki Master so that you can help yourself as well as others.

Also available ... Manicure / Pedicure

Vouchers are available for any treatment, so why not treat a loved one or friend as well as yourself.

Edlesborough based. For more information or to book an appointment call

Kate Meredith IHHT, RGN, on 01 525 221380

*Established over 10 Years*

# Duncan Tomblin TREE SURGEON

Forestry Contractor • Tree Felling  
 Crown Reduction & Thinnings  
 Deadwooding • Hedge Cutting  
 Stump Grinding • Site Clearance  
 Private Agriculture Fencing Contractor  
 Chipper & Stump Grinding Hire  
 Digger Hire

**FULL PUBLIC LIABILITY INSURANCE  
FREE ESTIMATES**

*'The Best Choice For Your Tree'*

**TEL: (01525) 221946**

**MOBILE: (07802) 410728**

**12 Greenways, Eaton Bray, Beds**

# **Highlights of the Minutes of the Annual Eaton Bray Parish Council Meeting held in The Coffee Tavern on Wed 6th May 2009 at 7:30pm**

## **Election Of Councillors**

Cllr Marriage was elected as Chairman of the Parish Council with all other Councillors agreeing to stand for this year.

## **Police Representative**

The Police confirmed that they are holding two Coffee Morning/Surgery events in the area where everyone is welcome to go along to discuss Problems & Grievances and get General Advice including about Crime Prevention. The events will be held on Wednesday 20th May 2009, 10:00am-1:00pm at the Coffee Tavern, Eaton Bray and on Friday 22nd May 2009, 10:00am – 1:00pm at the Memorial Hall, Totternhoe. The police are happy to talk to Eaton Bray residents at the Totternhoe surgery as well as at the Eaton Bray surgery. Notices for these events have been placed on parish notice boards, local shops and the village website. The Police wished the Parish Council to be aware of problem motorbikes within the village and to reassure people that the police are keeping a close eye on this situation. There are issues within the parish of people parking along the High Street, at corners with other junctions (i.e. High Street - Church Lane/Wallace Drive); the police confirmed they are monitoring this situation.

## **Grass Verge Cutting Within The Parish**

It was reported that the grass cutting by the Central Bedfordshire contractors is still not being done correctly and the Clerk confirmed she has written to Central Bedfordshire with the grass cutting issues, requesting the grass verges be cut again in accordance with the agreed specifications.

## **Bus Shelter**

It was confirmed that the work to the bus shelter should commence within the next 2-3 months.

## **Dog Bins**

The Parish Council have agreed to the location/ position of the five new dog hygiene bins.

## **Homewatch Areas In Eaton Bray**

If you are interested in becoming a Homewatch Co-ordinator, please contact the Parish Clerk for more details.

## **Accounts For Year Ending 31st March 2009**

The Clerk distributed details of the accounts for the Annual Return. It was agreed to approve the annual accounts, the Chairman signed on behalf of the Parish Council.

## **Future Eaton Bray Parish Council Meeting Dates**

Parish Council Meeting: Mon 1st June 2009, 7:30pm at The Coffee Tavern

Parish Council Meeting: Mon 6th July 2009, 7:30pm at The Coffee Tavern

## **Contact Details For Eaton Bray Parish Clerk**

Clerk contact times: Tuesday/Thursday/Friday 09:30-13:30hrs [messages can be left on answer phone]

Parish Office: 20 Good Intent, Edlesborough, LU6 2RD [Tel 01525 222601/Email clerk@ebpc.co.uk]

## **Parish Council Website**

www.ebpc.co.uk

<p><b>Eaton Bray Parish Council Meetings 1st Monday of each month 7:30pm The Coffee Tavern Next Meeting: Mon 1st June 09</b></p>
--

## **The Annual Parish Meeting held in The Coffee Tavern on Wednesday 6th May 2009 at 7:00pm**

The Parish Council were disappointed that no members of the General Public attended the meeting, as the Annual Parish Meeting is a meeting of the electorate and not of the council.

The Parish Council gave an update on completed and ongoing projects for the parish, this included:

- The ongoing improvements at Bower Lane Cemetery, to include additional turfing of rough areas within the cemetery.
- The Parish Council allotments which are currently fully let and there is a waiting list for plots. The Parish Council are looking into the option of using the Bower Lane land for additional allotment plots, however it is noted that this land has no water supply. An Allotment Group has now been set up to enable tenants to get together and discuss ideas/issues.
- The Coffee Tavern Cottage is now fully let, with improvements to the cottage now started and the next stage is for the redecoration of The Coffee Tavern/Reading Room.
- The first phase of the conservation area improvements has been completed with phase two of the improvements commencing in autumn 2009. The Conservation Working Group, made up of volunteers and Parish Council members, have been working extremely hard to improve this area and are looking to work with the River Ouzel Authority to make additional improvements to the river area/banks.
- The proposed Skate & Ride Area and additional seating at School Lane Recreation Ground, which is part of a recreational ground improvement plan. The Parish Council are looking to improve the facilities available to all age ranges within the parish at both School Lane and The Rye recreation grounds.

**It is important for electorates to attend the Parish Meetings if they want to offer their opinion on parish matters, to find out what is currently happening, what they would like to happen and to learn about any future projects being planned for the parish.**

**NORTHALL & DISTRICT  
AGE CONCERN  
The Annual General Meeting will  
be held on  
Tuesday 23rd June at 7.30PM  
at  
The Coffee Tavern, Eaton Bray  
Interested members of the public  
are very welcome to attend.**

**NORTHALL & DISTRICT  
AGE CONCERN  
WEDNESDAY LUNCH CLUB  
WANTED**

**3 Volunteer Cooks**  
To join existing teams

There are 5 teams so the roster is  
every 5th Wednesday

Northall Village Hall has  
an excellent kitchen and  
approximately 30 meals are  
provided every week for our  
elderly members

If you would like to help  
please contact The Chairman  
Tel 01525 221154

Email [idorsetian@yahoo.co.uk](mailto:idorsetian@yahoo.co.uk)



An evening of Ancient and Modern  
Egyptian Dance - performed by  
Wing of Isis and Eaton Bray  
Egyptian Dance Class

**Saturday  
13th June 2009**

**7.30pm  
at**

**Eaton Bray Village Hall,  
Church Lane, Eaton Bray**

Light refreshments

Egyptian Bazaar

Raffle

**BOX     • 01525 853360  
OFFICE • 07976 964316**



**Come along and have FUN,  
new membership joining deals**

'Play Tennis' day is a FREE tennis taster session for adults and children. There will be lots of fun tennis related games and activities, competitions, free giveaways, tennis equipment and clothes for sale by [racketsportsdirect.com](http://racketsportsdirect.com), BBQ and much more.

**Join the fun**

at  
**Eaton Bray Lawn Tennis Club on School Lane  
12 Noon to 3pm**

Contact Bernadette Hillman on 07958 714891 or e-mail  
'[bernadettehillman@hotmail.com](mailto:bernadettehillman@hotmail.com)' with any questions



[ebltc.org.uk](http://ebltc.org.uk)



## **Dagnall Day @ The Races**

Dagnall will be holding an event at the recreational ground this year on

**SATURDAY 12TH SEPTEMBER 2009**

The day will start at **3.00pm** with a variety of different races for kids & adults. You will be able to have a bet on all races so join in the great family fun in the name of charity!

We will also be holding an evening event from **7.00pm** until late with a **hog roast** and a **live band**, so all the family can party late into the summer night.

More details to follow!



# **TRAD JAZZ** **AT WATERMEAD**

**Church Gate, Edlesborough**

**Sunday 19th July 1.00 - 5.00pm**

**Come and enjoy a lazy Sunday lunch in this  
idyllic garden by the moat.**

Burgers, hotdogs & wine by the glass for sale  
or bring your own picnic.

Your entertainment will be provided by

**The Vine Street Six Jazz Band**

All proceeds go to **Merlin** the charity  
which provides lasting healthcare throughout  
the world & emergency disaster relief.

[www.merlin.org.uk](http://www.merlin.org.uk)

Admission tickets £5.00  
(under 15's £2.50 - under 10's free)

from Vivienne Grundy 222726

Lyn Stubbs 220731

Sharon Stilliard 222283



**OPEN**



**GARDENS**

**Sunday 14th June**

**12 - 5pm**

**Tickets, refreshments,  
plant sale and raffle  
at Eaton Bray Village Hall**

**12 gardens, mostly new this year,  
including a craft studio.**

**Admission: adults £4, children free**

**Tickets £3.50 in advance from Eaton Bray  
Lower School or Kay Griffiths on 222849**

**In aid of St Marys fabric fund and Merlin**

# 6th Eaton Bray Village Hall Beer and Cider Festival

Friday 5th and Saturday 6th June 2009



16 Real Ales + 2 ciders and 2 perrys  
Soft drinks, bottled lager and Wine available

Hot food and BBQ available  
Lunchtime and evenings

Live entertainment:

Friday night - Jerome Chance  
Saturday afternoon - Family Magic Show  
Saturday evening - Bob Thomson

Fri - 6 till 11, Saturday 12 till 11  
Entrance £3 by raffle ticket  
Free to CAMRA members with card proof



Dagnall Under Fives &  
Friends of Dagnall School  
present...



# Ladies Pamper Evening



FRIDAY 26th June 2009

7.30pm - 10.00pm

Dagnall Village Hall

A chance to pamper yourself and browse for some gifts in a relaxing environment  
Treatments available include massage, facials, mini pedicure, mini manicure and  
make-up. All cost £7 per 15 minute session or £18 for 3 sessions.

Gift stalls include Just for Girls Lingerie & Nightwear, Phoenix Cards,  
Made for Home and others.

Entry Fee of £3 includes Canapés, drink and cupcakes.

More pampering and gift ideas available on the night. Bookings for treatments  
can be made by contacting Dagnall under Fives or Friends of Dagnall School.  
Alternatively just come along on the evening.



## EDaN Youth Beetle Drive

7 - 9 pm on Friday 19th June  
at Edlesborough Memorial Hall

\* £1.50 per ticket including refreshments \*  
For young people aged 8 to 13 years  
Prizes for winners

Come and enjoy this fun, fast, furious and frustrating game  
Parents welcome to stay but not to play!

Please phone Liz Coates on 01442 842550  
to reserve your place  
Pay at the door





  
**Friends Of Edlesborough School**

# Edlesborough School Summer Fayre

**Saturday 27th June 2009 3pm - 5pm**

GO-KARTS . PONY RIDES . JAZZERCISE . FIRE BRIGADE  
ARCHERY . GYMNASTICS DISPLAY . FACE PAINTING . HAIR BRAIDING  
BOUNCY CASTLE . REFRESHMENTS . TOMBOLAS . RAFFLE . LUCKY DIP  
FOOTBALL GAMES . BARBEQUE . PIMMS TENT . BAR and much more!

Admission £1 . Edlesborough School children FREE! . **Come and join in the fun!**



Eaton Bray Lower School

# Summer Fayre

Saturday 13th June

12.00 – 2.30pm

**Kick start your summer by coming along to our Summer Fayre.  
There's lots to keep all the family entertained including:**

- Summer stalls
- Games and prizes
- Photo opportunity with a Star Wars character
- Candy floss
- plus loads more....

**Everyone's welcome, we're looking forward to seeing you!**



The Carnival Queen, Princess and attendants for this year's Carnival have been chosen! Leading the Procession as Carnival

Queen will be 12 year old Charlotte Nilsen, with Carnival Princess Shauna Lugsden, aged 9. Their attendants will be Elise Christie (11) and Rebecca Riley (9). The girls will be looking wonderful, in dresses supplied by Confetti Bridalwear in Tring, their hair styled by High Street Hair and carrying beautiful flower posies from Buds of May.



Choosing the Carnival Queen takes us one step further to this year's Carnival on Saturday 4th July. But there's still plenty of other preparation going on! The entertainments this year look better than ever – as well as the legendary worm charming contest, this year's entertainment has a musical flavour. Come along and see the 'Best of Bands' challenge – several bands will be busking in our marquee; the one that raises the most money will then be invited to play in the Carnival arena. You can also enjoy:

- a performance by the Manshead School Band,
- Magic Dave, who'll be presenting two shows
- a display by Jazzercise
- Animal Antics – plenty of farmyard animals for youngsters to enjoy
- a demonstration by Maggie Stern of Spinners and Dyers.

Perennial favourites the Dog Show and the Classic Vehicle display will be back, as will that Carnival favourite Clarabelle the Cow – see if you can guess the square of the Green where she'll drop her pat! For radio amateurs, visit the Radio Hams, to see how it's done! For everyone there is free admission, free entertainment and free parking!

We still need offers of help for the day itself. Could you man a stall for a few hours, join the heavy gang at the beginning or end of the day or could you make cakes for the tea tent or the cake stall?

For any of the above please ring Gordon Gray on 220136, or leave a message on our website – [www.stmarysvillagecarnival.com](http://www.stmarysvillagecarnival.com).

We're all looking forward to 4th July – hope to see you there!

## **NORTHALL BAPTIST CHAPEL**

**Chapel Lane, Northall**

(just beyond the speed limit signs on the road to Leighton Buzzard)

Everyone is welcome to our Sunday worship each week between 11am and 12.30pm including tea/coffee and time to talk together  
For more information contact: Steve and Helen Orchard 01525 373106

There has been a Baptist Chapel in Northall for more than 200 years. Today we continue to seek to worship God, serve him in our daily lives and support and encourage one another in the difficult and the joyful times.


**Wednesdays**  
**1:00pm to 2:45pm**  
 (During term time)  
 Eaton Bray Village Hall

---


**cheeky monkeys**  
 under fives play time

---

£1.50 per adult / £1.00 per child / 50p under 1yr

creative play    singing  
 stories        baby corner  
 craft         juice & biscuit  
 tea or coffee    and more!

Come along,  
 make new friends  
 and join in  
 the fun!


 Eaton Bray Methodist  
 Church

---

**CREAM TEAS**

To raise funds for GAZA

---

Homemade cakes  
 Games & Crockery Smash  
 Bric-a-brac & Plant Stall  
 Plenty of Car parking

At Chestnut Lodge, Leighton rd  
 Great Billington  
 On A4146 at south end of village

---

**Saturday June 6th 2009**  
**TEAS served 2 to 5pm**



**Summer Workshop**

Back by popular demand, Sam from Buds of May is running a Summer workshop, create a beautiful flower arrangement, in a relaxed and fun environment. All flowers, sundries and foliage are provided and you get to keep your creation at the end of the night. Refreshments provided.

**Date: Thursday 16th July 2009**  
**Time: 7.30pm – 9.30pm**  
**Location: Ivinghoe Aston Village Hall**  
**Cost: £22.50**

For further information or to book a place please call  
 Buds of May on 01525 221920  
 2 High Street, Edlesborough, LU6 2HS  
 Email: sam@budsofmayflorist.co.uk

**Stuart Ball**

**Ceramic Wall & Floor  
Tiling Specialist**

**Over 26 yrs Experience**



**City and Guilds  
of London Institute**

**Tiles supplied or Labour Only**

**For a reliable service call  
your Local Tiler**

**Eaton Bray 229381**

**N.D.S.**

**General Building & Plumbing**  
(Established over 15 years)

- Extensions - Loft & Garage conversions etc.
- Kitchens & Bathrooms fitted
- Installer of PVCu guttering, soffits & fascia boards
- Roofing • Patios & Block Paving

**Tel: 01525 221470**

**Mobile: 07941 563424**

**FREE ESTIMATES**

...

**NO JOB TOO SMALL**

**Unique  
designs**

- Full design - manufacturer and installation
  - Free planning and free estimates
  - Any size/shape/colour scheme
- Traditional & contemporary door styles
- Natural woods and solid colour finishes
- Home offices also designed & installed
  - 5 year guarantees



**Unique  
BEDROOMS DIRECT**

Visit our Showroom at:  
Unit 28,  
Icknield Way Farm,  
Tring Road, Dunstable,  
Beds LU6 2JX



[www.uniquebedroomsdirect.co.uk](http://www.uniquebedroomsdirect.co.uk)

**01525 229331**

**PUERTO BANUS  
MARBELLA  
SPAIN**



Recently built luxury 3 bedroom, 2 bathroom apartment approx 1 mile from centre of this well known Spanish marina. 45 mins easy driving from Malaga airport, served by Easyjet, Monarch etc.

Facilities include all mod cons including air-con, satellite TV, fully equipped kitchen, swimming pools, excellent clubhouse and tennis courts. Many golf courses and all weather bowling greens nearby. Climate makes this ideal for holidays throughout the year. Rates vary according to season (£300 - £750)

For a brochure and details call Peter or Celia on **01525 220173** or visit the website at [www.479losnaranjos.co.uk](http://www.479losnaranjos.co.uk).

**Golden Years Day Care Ltd**  
For The Elderly

- Pick up / Take home by car
- Held in local community rooms
  - Fully trained staff
- Visiting hairdresser/beautician/podiatrist
  - Full daily programme
- Home cooked meal and refreshments throughout the day
  - Fully insured
- Regular day trips (at extra cost)
  - Fees paid in advance

Call Sue Tearle (01525) 852764  
Katrina Fountain (01296) 429785  
E-mail : [susantearle@tiscali.co.uk](mailto:susantearle@tiscali.co.uk)

Company Reg No 656574

**HPC Registered  
CHIROPODIST & PODIATRIST**



*For visits in your home  
Phone: 07981 749038*

*(Also Central Luton surgery - open 6 days)*

**R.J.O'CONNELL  
BUILDING SERVICES**  
EXTENSIONS, PATIOS,  
DRIVEWAYS, ROOF REPAIRS  
AND PROFESSIONAL  
DECORATING SERVICE  
**TEL: 01296 681323**  
**MOB: 07855 236726**

*Painting/Decorating Curtain Rails  
Kitchen Fitting Tiling Shelving/Flat Packs*

**YOU need LITTLE JOBS if**



Shelves scare you, flat pack frustrates you  
or mowing doesn't move you,  
you need someone to **Do It for You**

For your General  
Home Maintenance needs

**Contact Carl Bird on 01582 703039  
or Mobile 07773 230055**

*Floor Laying Gutter Cleaning Fencing  
Loft Boarding Gardening etc.*

# Edlesborough Parish Council (including Edlesborough, Dagnall and Northall) News

Below is the Chairman's Report given at the Annual Parish Council Meeting held on 16th April 2009

**My report covers the period May 2008 –April 2009**

As in previous years your council has been working diligently on your behalf, not only on the everyday routine, but still very important business that keep the Parish in good order, but also the many new and long term projects that have to be carefully monitored. Some of these will be mentioned later in my report.

Your Council representatives are as follows. Edlesborough Ward Cllr David Brown, Chair of the General Purpose Committee, Cllr John Wilkinson GPC member, also responsible for planning and represents the PC on various committees throughout Aylesbury Vale, Cllr Marilyn Pryce-Jones deputy Chair GPC, Cllr Julie Ratherham who takes control of our promotion activities & Alan Williams GPC member & leader of the EDaN steering group. Northall Ward, Vice Chair of the PC & GPC member Cllr Kevin Cabbage who is also responsible for Northall Planning issues, finance and the web site. Cllr Mark Wilson fills the vacancy which occurred when Cllr Phil Conacher sadly passed away last October. Phil served on the Council for 4 years and will be greatly missed. We look forward to a long and productive term of office with Mark. Tim Jones, planning and me also a GPC member, represent Dagnall Ward. County Cllr Avril Davies and District Cllr Terry Jones continue to support and keep your Council fully informed on all issues of concern. To all the Parish, District & County Councillors, not forgetting our Clerk Lin who is responsible for the smooth running of the every day business of the Council, on behalf of myself and the Parishioners I once again thank you all for your total commitment.

[www.edlesborough.gov.uk](http://www.edlesborough.gov.uk) Cllr Cabbage continues to update our website on a regular basis, this is your first port of call if you wish to know anything about the Parish. Kevin recently spent many many long hours sorting out a problem caused by our service provider which required him to not only purchase new software but also to learn how to use it, but with Kevin's usual dogged determination and tenacity the site was soon up and running again. Once again Kevin we are indebted to you for all your expertise and input into this now essential major form of communication.

**The General Purpose Committee.** The GPC makes decisions with regard to many issues, saving valuable time at full council meetings. Areas they cover include allotments, Cemetery, street lighting, Memorial Hall and open spaces. This vital committee consists of the six Cllr's previously mentioned and the Clerk who takes the minutes. All decisions made by this committee are ratified at full council.

**Local Area Forum** Cllrs Wilkinson & Williams accompanied by our Clerk attend these very useful County Council organised meetings on your behalf, this is the one meeting where specific items can be discussed with the relevant Bucks CC officer

**Street Lighting** After a very difficult period due to the retirement of our long term contractor, we have, after several attempts secured the services of a reliable electrical company who are checking all parish lights on a monthly basis and repair and replace faulty parts as necessary. Please continue to report faulty lights to the Clerk so they

can be repaired quickly.

**Allotments** Due to the increase demands for plots in the parish, any allotment that hasn't been cultivated or worked during a six months period is being reclaimed by the PC and re-let as defined in the agreement signed by all tenants. Special circumstances are obviously taken into account before a re-let is implemented. A cup will be presented by the PC to the best kept allotment in each of the three villages and also a cup will be awarded at Dagnall's Garden Society Show held in September for the Best in Show exhibit entered by any parishioner. The Garden Society at Dagnall continues to satisfy every gardener's needs at their trading hut, which is open every Sunday morning from March until November.

**Cemetery** I am pleased to report that work has commenced and is well on the way to completion on the new cemetery entrance, access road and turning circle. The new entrance is off the bridleway on the strip of land purchased many years ago by the PC specifically for this purpose. This essential work will insure a much smoother and easier entrance and exit to the Parish lawn cemetery.

**Edlesborough Memorial Hall** The hall continues to be well used by a large range of local clubs, organizations and private individuals. Bookings for the hall and also the pavilion can be made through our helpful facilities & booking manager Beverley Sage. A clean venue is guaranteed thanks to our cleaner Lesley Riley.

We continue to support Dagnall & Northall Village Halls with a £1,000.00 donation to assist with maintenance & running costs, we also help with their finances by grass cutting and playground maintenance.

**Edlesborough Green** The green continues to offer first class facilities to the community, and the various clubs that make use of the green offer great opportunities especially to the youth of the parish, for this we support and thank them.

**Open Spaces** We thank Mr & Mrs Thomas for continuing to walk our footpaths and report any problems. Also for litter picking on a regular basis. We continue to report rubbish dumping to Aylesbury Vale DC who quickly remove the offending articles. The freighter service is still provided twice a year enabling you to dispose of unwanted items. We also continue to support the green sack scheme for disposable garden rubbish these can be purchased from Sue Parker or myself.

Although we have increased the number of dog bins throughout the Parish some inconsiderate dog walkers are still not clearing up after their dogs. Please be considerate to others & clean up or now the light nights are returning you could end up with a £1,000.00 fine.

**Road Repairs** We continue to monitor the condition of our roads & pavements and report any holes or problems to highways on call. Drop kerbs have recently been installed in Edlesborough to enable easier access to various points throughout the village by buggies and prams and also for mobility scooters and wheelchairs.

**Traffic Calming** The speed limit review is still on course to be carried out this year. Your PC has requested that Northalls speed limit be extended to Slapton Turn and reduced to 30 mph. It has been confirmed that this proposal is on the agenda. The hgv lorries and general speeding continues to be a problem on the A4146. We are presently attending meetings with adjoining parishes in both Beds & Herts to solve the ongoing problem with regard to the waste freighters going to and from the Newton Longville

land fill site. With regard to speeding throughout the Parish, your PC is in the process of purchasing its own monitoring speedwatch equipment. Volunteers will be needed to man the equipment so watch this space.

**Airport & Airspace Issues** We have received notice that a new Consultation will be taking place shortly and as in previous years Cllr Wilkinson will be attending P.A.I.N. meetings & monitoring the situation closely on your behalf.

**Police Matters** Our PCSO's Jackie Dobson & Chris Baker continue to bring a Police presence to our villages supported by our Community Police Officer Jared Levens. Unsociable behaviour has been a recent issue but thanks to their efforts the situation now seems to be under control. They will also be monitoring the ongoing parking situation in the High Street Edlesborough, so to avoid receiving a penalty ticket please do not park in the No Parking areas particularly at road junctions - you have been warned. Speed checks are regularly carried out throughout the Parish and a recent one in Dagnall showed one in five vehicles to be travelling above the 30mph limit. If you have any worries or concerns please feel free to stop and talk to the officers as they patrol the streets or give them a ring on the 08458505505 if you wish them to come and see you with regard to a specific problem. Thank you ladies for your on going support to our community.

The highlight of the past year must surely be the publishing and distribution of the Parish Plan, to every household and workplace in our three villages. To complete this comprehensive, invaluable document in such a short space of time is a phenomenal feat by Parishioners working in partnership with the PC. My heartfelt thanks go to all the Pioneering Steering Group, Committee members & parishioners who have recently come on board. Already many of the points highlighted in the plan are coming to fruition. For instance no one can fail to notice the beautiful daffodils along the verges throughout the Parish a result of the Beautifying the Villages Committee, made up of parishioners working with the PC. Another project which will need your help to succeed is the previously mentioned Speedwatch programme. So if you have a particular concern which you would like to see addressed or improved now is your chance to participate, why not join one of the many committees which have been set up, further details are available on our website [www.edlesborough.gov.uk](http://www.edlesborough.gov.uk). Regular updates from EDaN also appear in Focus, this is your chance to make a difference and working together we can make this Parish a much stronger community and a truly fantastic place to live.

This concludes my report.

Anne Thompson

Chairman Edlesborough Parish Council

**Edlesborough  
Parish Council Meetings  
3rd Thursday of every month**

**7.30pm Memorial Hall**

**Next meeting: Thurs 18th June 09**

**Eaton Bray Village Hall 100  
Club Winners  
April 2009**

36	Anthea Burke	£100
62	Mr S. Coyle	£25
80	Audrey Gurney	£25
19	Kim Chappell	£25
78	Carole Dixon	£25

Drawn on 21st April 2009 at Eaton Bray Lower School. Please direct any correspondence to Ross Bagni, 71 Bower Lane, Eaton Bray, Bedfordshire, LU6 1RB, Telephone: 01525 221411.



## Letters to the Editors



Dear Editor,

My name is Jess Hawkes and I am a young person living in Eaton Bray. I work locally in the village, you may know me from working at Frank Pell's vegetable shop on Saturday mornings, or the local Chinese takeaway in Eaton Bray. I have a wide range of friends across the villages, and I often use the recreational grounds available. Every year I partake in the village carnival and am often supporting local village causes such as fetes and fairs, and therefore I have always considered myself to be part of this community.

However, recently, in regards to the proposed skate and ride park, to be built in Eaton Bray recreational ground, I have been appalled and quite personally offended by the apparent disrespect and low opinion many of the village residents hold for the young people of Eaton Bray.

I have read in horror the letters from opposed residents to this proposed skate park. Of course, some of the letters bear relevant and valid concerns which can be addressed, however, there is one overlying issue that has been irrespectively brought up again and again - the alleged 'anti-social' behavior that a skate park will bring to the village.

I must ask, are you suggesting with this 'concern' that every young person with a talent for skating is out to cause trouble and antisocial behavior? Because if so, I can put your mind at rest by assuring you that every one of the many young skaters I know in Eaton Bray and surrounding villages are driven by nothing but passion for their hobby and are complete upstanding members of our community.

Many of my friends and I have been highly insulted with this obvious way villagers have displayed their presumption that all the adolescents are up to no good. It makes us feel excluded from our community, which we are just as entitled to be a part of as anyone else.

In regards to a previous letter to the editor published last month, you claimed that the money could be spent more efficiently than on 'a small group' of people. Perhaps, if you had turned up to the public consultation the EBPC held in March, you would have seen the crowded room, full of dozens of young individuals speaking up in favour for their desired skate and ride park. As I understand, this funding has been raised to be spent in no other way but to benefit the young people in our community. And surely, it seems logical, that the best way to benefit the young people, is to listen to our opinions and give us something that will be used and that we will enjoy.

If you still believe that this Skate-park is going to cause more 'anti-social' behaviour, then clearly you must have a dreadful narrow minded view of today's society, if you are ignorant enough to let the occasional event in the newspapers concerning a teenager influence the way you feel about all young people.

The media does not lead us, and I hate this image that it has given us. And I particularly dislike the way in which this stereotypical image is now preventing us from having a beneficial new aspect to our village.

I'm sure the older generations wouldn't like to be stereotyped as being 'boring', 'over-opinionated' and 'provincial', as the media portrays them to be. So how fair is it that every young person in the village and surrounding area is stamped with the label of being a 'trouble maker'?

*So, as a representative of all the young people in Eaton Bray, I ask of you to please, stop viewing us as your opposition. We are not trying to work against you.*

*We are not your enemy.*

*I do not expect to change your mind about the proposed skate park, you have made it quite clear how strongly you feel about that. But surely you can be civilised enough to acknowledge the fact that we are a large, valued part of this community, rather than insulting us with this assumption that all young people are primarily out to cause trouble.*

*Thank you.*

*Jess Hawkes*

\*\*\*\*\*

*Dear Editor,*

*Recently we were shocked to find out through a trip to the vet with our cat, that he has 3 air pistol bullets in his chest. These have all happened since we moved to Eaton Bray 2 years ago. We just wanted to make all villagers aware of this and if it does happen to your pet to make our local PCSO aware.*

*As this didn't happen recently, we are hoping that who ever did this to our cat has given up on him.... Thankfully he still has 6 lives left!*

*Regards*

*Suzanne,*

*Eaton Bray*



## **Edlesborough Book Group Review** **“Over Hill And Dale” By Gervase Phinn**



At a recent meeting, the group as a whole, suggested that we read a book that would cheer us through the current times of depression. We chose to read one of a series by Gervase Phinn, which chronicles his career as a schools' inspector in the North Yorkshire dales. His style is very breezy and easy to read and his anecdotes about the staff and pupils that he meets are very amusing. He also sketches in the hierarchy of the staff in the local education office and of those in County Hall to great comic effect. Romance is in the air, as a very attractive head teacher has taken Mr Phinn's fancy and the storyline follows their courtship and marriage.

The book is very light hearted and entertaining and purports to be autobiographical. The narrative however, is a little too slick to be absolutely true. Quite a lot of authorial licence appears to have been taken to obtain the overall effect. But the majority of our group enjoyed the book very much and it did have the desired effect of lifting our combined spirits.

In May, the 'Stables' at Wavenden advertised An Evening with Gervase Phinn'. This seemed a good opportunity to compare the book we had read with the real thing, so a group of us went along.

Gervase Phinn, in the flesh is as amusing and entertaining as his books, but his genial personality and excellent timing and delivery make the stories he tells twice as funny. He appears to be a genuinely nice man, totally committed to improving the education of children and their appreciation of the English language.

We thoroughly enjoyed the evening with Gervase Phinn. Laughter is a potent medicine.



www. **DRIVESTYLE VANS** .co.uk

NOW you can buy our vans directly via our new WEBSITE.



## LOW COST VAN & TRUCK HIRE

You Can't  Our Vans

Call Us Today to Book Your Vehicle

**Flitwick Depot**  
**01525 715 000**  
High Street Flitwick MK45 1DU

**Milton Keynes Depot**  
**01908 319 777**  
Haversham Road Wolverton  
Milton Keynes MK12 5TN

**Dunstable Depot**  
**01582 600 465**  
31-37 London Rd  
Dunstable LU6 3DH

**Leighton Buzzard**  
**01525 211 175**  
Watling St, Hockliffe  
Leighton Buzzard LU7 9LJ

S E W S O F T  
interiors

- ❖ Handmade Curtains and Valences
- ❖ Roman, Venetian, Vertical and Roller blinds, Cushions and Upholstery
- ❖ Tracks and Poles
- ❖ Everything beautifully made and fitted to the highest standards
- ❖ Exceptional personal service in your home, taking care of all the details, reducing your stress
- ❖ You can use your own or choose from a range of the latest fabrics as well as the more traditional favourites

Call me  
**Sue Hawkins on**  
**Whipsnade (01582) 873358**  
**Mobile: 07774 140526**  
Email: [design.workshop@hotmail.com](mailto:design.workshop@hotmail.com)

What do you have to sell?

## Sell it on eBay!

We'll Sell **ANYTHING** for You  
Make money from those unwanted items to hidden treasures  
Business enquiries welcome

**Nick and Emma**  
**01525 220256**  
Or visit us at  
**Buffalo House Collectable Pottery Centre**  
Mill Road Slapton

And enjoy our Aladdins cave of old and new pottery, Moorcroft, Martin Brothers, Torquay Mottoware, Muggins stoneware and much more



## DIGITAL & ANALOGUE

**TV & FM Radio Aerials**

**Satellite Installations**

**Extra TV & Satellite Points**

**FREE ESTIMATES**

**☎ 01525 852912**

**☎ 07710 429678**

## Feeling Crafty

Learn to make greetings cards or to scrapbook, have fun with your friends, get the supplies you need. Classes, Demonstrations and Parties. Card & Invitation commissions undertaken.

Contact Bekka on

07990 837990 or 01525 220794

Email: [bekka@feeling-crafty.co.uk](mailto:bekka@feeling-crafty.co.uk)

[www.feeling-crafty.blogspot.com](http://www.feeling-crafty.blogspot.com)



## WESTROPE BROS.

**LAWN MOWER SERVICES**

*ALL TYPES GARDEN MOWERS SERVICED*

**THE RYE, EATON BRAY**

Tel: Eaton Bray 220587

## RD ELECTRICAL

Specialising in all types of Electrical and Air Conditioning installations including:

- ◆ Inspection and Testing
- ◆ Garden and security lighting
- ◆ Energy efficient lighting
- ◆ Re-wires
- ◆ Specialist lighting – bespoke designs
- ◆ Kitchen and Bathroom specialist

Air conditioning throughout your home  
All work guaranteed.



**Call Richard on:**  
**01525 221475**  
**07932 759680**



For a no obligation quote

**MOT  
TEST CENTRE**  
**ROEBUCK GARAGE**  
HIGH STREET  
EATON BRAY  
220385

**McTimoney  
CHIROPRACTIC**



**Margie Craib** BSc BHSLDC AMC MMCA  
Human and Animal Treatments

Ashridge Farm, Ringshall, Berkhamsted, Herts HP4 1ND  
Telephone: (01442) 842729

General Chiropractic Council Registration No. 293



**Moren Associates Limited**

Virtual administrative support to  
businesses & private individuals

Word processing

Spreadsheets

Desktop publishing

Presentations

Typing

and more...

**Tel: 01525 229695**

Email: [enquiries@morenassociates.co.uk](mailto:enquiries@morenassociates.co.uk)

**[www.morenassociates.co.uk](http://www.morenassociates.co.uk)**

**ADRIENNE'S  
PRIVATE HIRE**

Call for a **FREE** quotation  
Book early to avoid disappointment  
Very competitive prices

Airport Transfers  
& Private Hire

**07980 039715**

Our executive Cars, 6 seater Minibuses and  
lady driver are all available



**Rose  
Cottage  
Interiors**  
for Quality  
**Hand Finished  
Curtains**

Soft Furnishing, Interior Design  
& Upholstery Service  
*Fabrics available*

Handmade Curtain Specialist  
Swags & Tails • Pelmets •  
Valances • Tie-Backs  
*Clients own fabric welcome*

Jane Euston • Rose Cottage  
Northall Road • Eaton Bray  
Tel/Fax: 01525 221034

**GRASS ROOTS  
GARDEN MAINTENANCE**  
*Including*  
**TREE SURGERY**  
SELECTION, SUPPLY & PLANTING  
OF TREES, SHRUBS & HEDGES  
(Fully insured)  
BRIAN McMAHON NCH (Arb)  
**Tel: 01525 221960**

*THE COMPLETE BUILDING SERVICE*

**S.M. REILLY & SON**

**Established 1987**

*GENERAL BUILDERS*

*Extension Specialists*

**Tel: 01525 221740**

**Mobile: 07970 637511**

Plastic Fascia & Soffit - Double Glazing  
Windows - Doors - Conservatories  
Decorating - Drives - Porches  
Barn conversions - Roofing



**Tel**  
**01525 222145**  
**Mobile**  
**07971 559185**

# Lee Hutt

## Heating and Plumbing Services

**FREE ESTIMATES GIVEN**  
**NO CALL OUT CHARGE**  
**ALL WORK UNDERTAKEN**  
**INSTALLATION, REPAIRS**  
**NO JOB TOO SMALL**  
**DOMESTIC & COMMERCIAL**



## JMC PEST CONTROL

Very competitive rates. Fast efficient service.  
Wasps Ants Fleas Cockroaches Flies Rats Mice



Professional, discreet service.



Contracts welcome

**Tel/fax: 01582 - 471766**

**Mobile: 07973 - 407027**

**[jmcspringbank@aol.com](mailto:jmcspringbank@aol.com)**

## Don't put up with aches & pains!

Treatment for a fast recovery, injury prevention  
and advice, for you and your family to lead a  
healthy and active life

### Health

Physiotherapy  
Paediatric Physiotherapy  
Acupuncture  
Women's Health  
Podiatry  
Chiropody  
Body Alignment  
Ergonomic Assessment

### Well Being

Pilates  
Acupuncture  
Reflexology  
Sport and Soft Tissue  
Massage

Member of The Organisation  
of Chartered Physiotherapists  
in Private Practice

**01525 377751**

[enquiries@stjudesclinic.com](mailto:enquiries@stjudesclinic.com)

[www.stjudesclinic.com](http://www.stjudesclinic.com)

# St. Judes

physiotherapy, health and well being

## G & J Groundwork

**Ring Garry**

**01582 477568**

**Mobile**

**07949 118011**

**Fencing Panels • Blockpaving**  
**Shingle Drives • Paths • Slabs**  
**Paving • Steps • Gardenwalls**  
**New Patios • Relaying**  
**Soak Aways • Drainage**  
**Free estimates or advice**  
**References**

*Trading Faces*



*Beauty Salon*

FACIALS ♦ EYEBROWS ♦ EYELASHES  
♦ MAKE-UP ♦ NAILS ♦ MANICURE ♦  
PEDICURE ♦ CHIROPODY ♦ MASSAGE ♦  
WAXING ♦ ELECTROLYSIS ♦  
BODY TREATMENTS ♦ SELF TANNING ♦  
SLIMMING TREATMENTS ♦ WASH ♦  
CONDITION ♦ CUT ♦ BLO-DRY ♦ COLOUR  
HIGHLIGHT ♦ TINT ♦ PERM

You'll find every Top-to-Toe Hair & Beauty  
Treatment you could ever want at;

*Trading Faces*

Wallace Drive • Eaton Bray • Beds • LU62DF  
(Next to Threshers Off-Licence)

**TEL: 01525 229111**

OPEN TUES TO SAT 11.00AM TILL LATE

*Hair-Beauty-Chirophy*

**G.R. Davis** LCG

Eaton Bray

**Cabinet Maker • Carpenter • Joiner**

House Interiors

Handmade Kitchens

Can also supply and fit Crown Imperial  
kitchens, wardrobes and desks

Home: 01582 600086

Mobile: 07759 856566

**D & E HINES**

**High-Class Butchers**

**Quality Beef, Pork & Lamb**

**Grade A Poultry**

**BBQ & Sausage Speciality**

**Renowned for 'Bunkers Sausages'**

**Telephone: 01525 220413**

**GREAT  
OUTDOORS & IN  
CLEANING SERVICES**

**PRESSURE WASHING**

- Block Paving & Pattern Imprinted Concrete (PIC) Refurbished
- Driveways / Patios / Paths
- Walls / Fences / Roofs
- Guttering / Fascias & Soffits
- Graffiti / Chewing gum removal

**FULLY INSURED**

**EXTERIOR CLEANING**

- Conservatories - Hand Cleaned (Inside / Outside)
- Litter / leaf collection

**INTERIOR CLEANING**

- Office cleaning
- Carpets & Upholstery (ALL STAFF PROCHEM TRAINED)
- Hard floors Refurbished

**0800 298 5883**

**FOR MORE INFORMATION VIEW OUR WEBSITE**

**[www.greatoutdoorsandin.co.uk](http://www.greatoutdoorsandin.co.uk)**

**37 Oldhill, SW Dunstable**



MEMBER OF THE FEDERATION  
OF SMALL BUSINESSES



## Table Corner

Many people assume that the life of a caterer restrains itself to cooking, cooking and more cooking.

Well, they are substantially right. It also involves wearing a very unsightly uniform and a very funny hat, but that's beside the point! Catering also involves:

- Carting a lot of material and equipment about
- Following and keeping up to date with the latest health and safety rules
- Knowing about allergies and specific disorders (each party seems to have at least one nut allergy sufferer!)
- Making sure all your guests and staff are safe

You might think that it does not sound like much fun. But there are also fantastic aspects to catering:

- You have to do everything to make the food visually interesting. We all know that you eat as much with your eyes as with your mouth!
- You get to meet wonderful people
- And above all you create something, which often tends to be one of the most important days in the lives of your guests. And isn't that a compliment?

Pascale, The Little Dagnall Catering Company, 01442 842 857 - 07900 498476 – [www.dagnallcatering.co.uk](http://www.dagnallcatering.co.uk)

---

## National Glaucoma Awareness Week 8th - 14th June 2009

**Don't let the credit crunch squeeze your vision!**

**Glaucoma is the leading cause of preventable blindness in the UK today.**

About 2% of the population over the age of 40 have glaucoma, but half of them are undiagnosed and in danger of progressive irreversible sight loss. Early diagnosis of the condition is essential to prevent debilitating sight loss, but because people are unaware that they might be at risk, they don't have their eyes tested regularly and the present financial crisis is likely to mean that even more people put off their sight test, which will lead to more people suffering permanent visual loss to glaucoma and other eye conditions.

How can this happen? Glaucoma is usually caused by a build up of pressure within the eye, which gradually damages the optic nerve. It is rare for sufferers to feel any pain or have any other obvious symptoms. To make matters worse, if you have glaucoma and start to lose sight, one eye will fill in for the other and the brain compensates so it is not until significant damage occurs that you notice there are areas of blindness.

Often this will mean that an undiagnosed sufferer will start having more trips and falls and if they are driving, may miss cars overtaking or even people or children crossing the road.

What should we do? As the progression of glaucoma damage cannot yet be reversed, only stopped or slowed, treating the condition is much more likely to preserve an individual's quality of life if glaucoma is detected early.

During National Glaucoma Awareness Week our aim is to encourage everyone over the age of 40 to have a regular (once every two years) routine eye test that includes all three glaucoma tests (ophthalmoscopy, tonometry and perimetry), whether or not they believe anything is wrong with their vision. We are asking for your help to publicise this advice so that needless visual loss and blindness due to glaucoma can be avoided.



# CLEAN MACHINE

01582 608855  
07721 550165

PROFESSIONAL DOMESTIC AND COMMERCIAL CLEANING



*Chartered Surveyors Valuers Estate Agents*

Run by Branch partners Colin & Linda, we offer a friendly, professional, caring approach to the often stressful process of house moving.

3 Summerleys, Edlesborough, LU6 2HR

Tel: 01525 222333

[www.christopherpallet.com](http://www.christopherpallet.com)



## GYM & TONIC

**WANT TO GET FIT, HAVE A HEALTHIER LIFESTYLE & IMPROVE THE WAY YOU LOOK & FEEL?**

The following can be provided in our Gym in Edlesborough or in your home

- \* A Health & Fitness Consultation \*
- \* Personal Training \* Massage \*

Ruth Anderson Dip. PT & ST, Member of: Inst of Sports Therapists & Register of Nutritional Therapists

**Tel:01525 223074 Mob:07812 163979**



Studham Lane, Dagnall,  
Hertfordshire, HP4 1RH  
Tel 01442 842310



Email: [secretary@whipsnadeparkgolf.co.uk](mailto:secretary@whipsnadeparkgolf.co.uk)

Web: [www.whipsnadeparkgolf.co.uk](http://www.whipsnadeparkgolf.co.uk)

### Whipsnade Park Golf Club

Beautiful Parkland 18 hole Par 73 Golf Course, Driving Range & Short Game practice facilities

Memberships are available and societies welcome

Beginners Classes & Junior Academy LTPD Programmes, Quick Fix & Playing Lessons all available with our PGA Coaching Staff

For our neighbouring residents we are delighted to offer

**10% Discount on Green Fees Or Lessons**

## Anne Brierley Designs

Designer/Pattern Cutter/Dressmaker

Specialising in Bespoke Designer Bridalwear and Lingerie

Other Services available include:

- Made-to-measure
- Special Occasion Wear
- Alterations
- One-Off Designs
- Freelance

To find out more about how we can help you with all your sewing needs  
Contact

Anne Brierley on 01525 220809  
or mobile 07886737881

email : [annebrierley@btconnect.com](mailto:annebrierley@btconnect.com)

website : [www.brieranim.co.uk](http://www.brieranim.co.uk)

# Dagnall School

A Buckinghamshire co-educational school

For 4-7 year olds



'Dagnall School provides a happy and safe environment. The children are always involved in lots of activities that make learning interesting and enjoyable. My child is very happy here' Quote from a parent during our recent Ofsted inspection. (June 2008)

This is a good school. Pupils make good progress and their personal development is outstanding. Standards are well above average in reading, writing and mathematics (Ofsted June 2008)

Dagnall school offers

- small classes
- a broad and interesting curriculum
- a wide range of extra curricular opportunities
- excellent care and support
- a school that has excellent community links

Does this sound like the kind of school you would like your child to attend?  
Then come and visit us and meet our lovely children and dedicated staff.

Website [www.dagnall.bucks.sch.uk](http://www.dagnall.bucks.sch.uk)

E-mail [office@dagnall.bucks.sch.uk](mailto:office@dagnall.bucks.sch.uk)

Tel & Fax 01442 842473



## J.G.S. Metalwork & Son

### Specialists in Gates & Gate Automation

Access Control • Security Grilles • Railings  
Balconies • Weathervanes

[www.jgsmetalwork.co.uk](http://www.jgsmetalwork.co.uk)

Call in to discuss your ideas

High Street, Edlesborough LU6 2HS

Tel: 01525 220360 Fax: 01525 222786

## Pressing Need

### Ironing, Laundry & Dry Cleaning Service

Free Collection & Delivery  
from home or office

Executive Shirt Service (Wash & Pressed)

Duvet Service (washed and dry)

For more information or to book a collection

call 01582 667332 or 07885 320042

or email: [ironout@aol.com](mailto:ironout@aol.com)

## SPRAY TANNING & NAIL SALON above Buds of May

## seventh heaven

HAVE A GOLDEN TAN & PERFECT NAILS ALL YEAR  
ROUND WITH THE HELP OF SEVENTH HEAVEN!

- ♥ Fake Bake® America's No1 spray tan
- ♥ Bio Sculpture gel overlays & sculptures
- ♥ Acrylic nail extensions
- ♥ Manicure, Pedicure & Callus treatment
- ♥ Ear piercing
- ♥ Make Up application
- ♥ Bespoke parties

Call us for more details

SEVENTH HEAVEN 2a HIGH STREET EDLESBOROUGH  
01525 222918 / 07863 133577 / 07725 553530  
[angels@seventhheavenuk.co.uk](mailto:angels@seventhheavenuk.co.uk)  
[www.seventhheavenuk.co.uk](http://www.seventhheavenuk.co.uk)

# Absolutely Plastered



**DOMESTIC/COMMERCIAL, CLEAN AND RELIABLE SERVICE,  
FREE ESTIMATES, FRIENDLY ADVICE**

- \* Plastering & Coving
- \* Floor Screeding
- \* Pebbledashing & Rendering
- \* Dry Lining
- \* Cornices & Mouldings
- \* Insurance Work Undertaken

**CALL NICK CONWAY ON**

**Mobile: 07751 830716**

**Tel: 01525 221877/01442 269565**

26 School Lane, Eaton Bray, Dunstable, Bedfordshire LU6 2DT



## Illustria Kennels & Kathotel

**Mick and Denise Garrod**  
Proprietors

Offer your pet a fully licensed Dog  
and Cat boarding service

Purpose-built Dog kennels

Individual Cat chalets with  
outdoor exercise runs

All in pleasant country surroundings

**WELLHEAD BUNGALOWS,**  
**TRING ROAD,**  
**DUNSTABLE,**  
**BEDS LU6 2JU**  
**TELEPHONE:**  
**(01582) 665343**



## Neil Hodson Associates

Consulting Structural Engineers

**24 HIGH ST TRING**

OFFER A COMPREHENSIVE RANGE OF  
**PROFESSIONAL BUILDING DESIGN,**  
**ADVISORY AND DRAWING SERVICES**

From plans for domestic extensions to  
multi-storey offices, commercial  
buildings and factories.

Structural surveys, site surveying,  
advice on building defects and  
Feasibility Studies

Planning Applications and Building  
Regulation Consents obtained.

**Tel 01442 890894 OR**  
**Edlesborough 222462**

## KEITH GRADLEY ELECTRICAL

83 High Street, Eaton Bray  
Tel: Eaton Bray 222303  
Mobile: 07976 640869

For all Domestic, Commercial and  
Industrial Wiring and Plumbing  
Storage Heaters, Showers etc.  
Security Systems Installed  
Test and Inspections  
Free Estimates and Advice

## ALAN BARNARD BUILDING REPAIRS

ESTABLISHED 1967

### NO JOB TOO SMALL

- ALTERATIONS & REPAIRS
- NEW KITCHENS & BATHROOMS
- BUILT IN WARDROBES
- PAINTING & DECORATING
- U.P.V.C FACIAS & SOFFITS
- WOOD OR U.P.V.C DOORS &  
WINDOWS
- WOODWORK

**20 WELLHEAD ROAD**  
**TOTTERNHOE, BEDS**  
**01582 609726 & 07774 247658**

## WANT FINANCIAL FREEDOM?

We're looking to expand our £36 million UK  
organisation with committed, ethical, hard-  
working people who like to help others.

If you've a managerial, teaching, training,  
HR or self employed background we've  
excellent opportunities for you to develop  
an extraordinary income yet work around  
existing commitments. Flexible and home-  
based business suits part or full time.

Call Amanda Wright on **01525 221001**  
or **07956 366053 - TAKE CONTROL!**



## Is your money working hard enough for you?

- Your mortgage** – is it on the best deal possible?
- Your insurance** – is it value for money? Have you reviewed if you have sufficient life, income or unemployment protection?
- Your savings** – are your ISAs and other savings / investments performing as you expected?
- Your retirement** – are your pension plans on-track? If you are retiring soon, are you ensuring you get the best annuity rates?

**For a no obligation initial discussion contact Paul Pearce APFS, your local Independent Financial Adviser and see if he can help?**



Email: [paul@finpru.com](mailto:paul@finpru.com)  
Telephone: **01525 220 480**  
Financially Prudent (IFA) Ltd,  
23 The Green, Edlesborough, LU6 2JF



Financially Prudent (IFA) Ltd is authorised and regulated by the Financial Services Authority



# VANSAR BLINDS

Domestic and Commercial Specialists  
In All Types of Blinds and Awnings

Local Family Business est. since 1984

- ◆ Vertical
- ◆ Venetian
- ◆ Rollers
- ◆ Wood Weave
- ◆ Roman
- ◆ Pleated
- ◆ Wood Venetian
- ◆ Conservatory Blinds
- ◆ Patio Awnings

**For a Friendly & Reliable Service  
Free Measuring and Quotations**

Supply and Fitting  
Contact Mark Allen  
on

**01525-220477**

**07711 257473**

[www.vansarblinds.co.uk](http://www.vansarblinds.co.uk)

Weddings \* Birthdays \* Anniversaries  
Funerals \* Social Functions \* Balloons  
Corporate Contracts \* Fashion Jewellery  
and much more ...

*Buds of May*

For all your floral requirements

Full Teleflorist member deliveries worldwide

**Opening Times**

Monday – Friday 9.30 am – 4.30 pm  
Saturday 9.00 am – 1.00 pm  
Sunday closed

2 High Street, Edlesborough, Beds, LU6 2HS

**Tel. 01525 221920**

Email: [Sam@budsOfMonthlorist.co.uk](mailto:Sam@budsOfMonthlorist.co.uk)

**MICHAEL HUBBINS**

**TELEPHONE ENGINEER**

Installation of Telephone Extension Sockets  
Digital, Satellite & Internet Sockets

Also Domestic Electrical Work Undertaken

**Tel: 01582 471648**

**Mobile: 0771 8834851**



**Stephen D.  
Janes  
Est. 1982**

**CARPENTRY, JOINERY  
KITCHENS FITTED  
PROPERTY MAINTENANCE  
TELEPHONE: 01525 220649**



**WOODSIDE CLINIC**

OSTEOPATHY, PHYSIOTHERAPY,  
CRANIAL OSTEOPATHY, CHIROPODY/  
PODIATRY, PILATES AND VARIOUS  
MASSAGE THERAPIES

***Provided in our great new  
facilities by friendly, caring staff***

88 Great Northern Road,  
DUNSTABLE, Beds. LU5 4BT  
**Tel: 01582 608400**

28A High Street, LEIGHTON  
BUZZARD, Beds. LU7 1AH  
**Tel: 01525 372447**

Also in SHEFFORD, near Hitchin

**Anne Johnson D.O.**

***Registered Osteopath***

6 Moor End, Eaton Bray

**01525 221958**

**07957 250682**

Daytime and Evening

Appointments Available



**Digital +**

**Aerial & Satellite Systems**

Tel: 01525 237498  
Mobile: 07970 260518



[www.digitaltelly.tv](http://www.digitaltelly.tv)

# ***Every child matters at Edlesborough School!***



**‘Standards reached by learners are good’**

**‘Personal development and well-being of  
learners is outstanding’** OFSTED 2008

Edlesborough School is a co-educational village school for children from 4 to 11. We provide the benefits of a continuous primary education and the broad experience of a highly professional and caring staff.

Our aim is to help all children achieve their maximum potential as individuals and as members of society.

**We would welcome the opportunity to show  
you round our friendly school.**

**Please ring Janet Hatfield on 01525 220431  
[www.edlesborough.bucks.sch.uk](http://www.edlesborough.bucks.sch.uk)**





### Edlesborough Under 5's

**Monday - Friday** 9.25 am - 12.00 noon

**Tuesday & Thursday** 12.45 pm - 3.15 pm

*"The quality of teaching and learning is good. Children are actively involved in their learning, play independently and are assisted by staff to develop their confidence." "Group times at all sessions were very positive experiences for all the children and enjoyed by all present." "Children of all ages have the opportunity to develop their skills in all areas, supported by a dedicated staff team." "Children are encouraged to make choices and decisions throughout the day, supported by a staff team that know them well."*

These are just a few of the comments made in our fifth OFSTED Report (March 2008 - available via our website). The report reflects the high quality of learning on offer to all children at Edlesborough Under 5's and highlighted the quality of teaching by the staff. We are currently operating a waiting list for 2½ to 4½ year olds. If you would like to pop in for a look around, please phone Tracey on 07854 939226 between 9am - 12 noon, to arrange an appointment. A warm welcome awaits you.

**For registration details or to place your child on the waiting list,  
please phone Sue Pickering: Tel - 01525 222199.**

**"We are an Equal Opportunities Employer" [www.edlesboroughunder5s.org.uk](http://www.edlesboroughunder5s.org.uk)**

Strawberries Beetroot Turnips Chard Potatoes Raspberries Cabbage  
Peas Gooseberries Leeks Garlic Broccoli Redcurrants Runner Beans

**GROVE FARM PYO**

**Great Gap Ivinghoe LU7 9DZ**

**Open 10am everyday from approx mid June - October  
Buy Fruit and Vegetables that you select and pick  
fresh from the farm - great fun for the whole family**

**For Information ring 01296 668175 or visit  
[www.grovefarmpyo.co.uk](http://www.grovefarmpyo.co.uk) and join our mailing list**

French Beans Cucumbers Gladioli Onions Sweetcorn Tomatoes Swede  
Sunflowers Pumpkins Marrows Broad Beans Blackberries Cauliflower  
Parsnips Courgettes Blackcurrants Carrots Spinach Brussel Sprouts



## Gird your loins!!

Yes as I said last time we re getting ready for the 6th Eaton Bray Beer Festival, assuming you have read Focus early, this will be a great reminder of the event that takes place on Friday 5th June, 6-11pm and Saturday 6th June 12am-11pm.

We will have 16 beers and 2 ciders provided by our good friends from CAMRA plus the wine and lager for those who do not do the Real Ale! Obviously we will be doing lots of soft drinks for those that don't imbibe or are driving.

There is also entertainment each evening and a children's magician on Saturday afternoon.

For full details take a look at our advert on another page.

You may remember me writing about the successful quiz we held on the 18th April before we had actually had it! This may seem strange but what with deadlines one just cannot avoid it!

We made over £1100 which was shared by the Village Hall and Tennis Club with 168 people testing their knowledge against Keith's, our trusted Quiz Master, he came first, but then he did have the answers written down, but a gallant team led by Bernie, the current Chair of the Tennis Club were announced the winners by just one point!

Thank you all for coming and thought you might like to know that we have already sold the first table for the next quiz on October 10th!

See you at the BBQ! Any further information just ask me, Ross on 221411.

---

## HOLIDAY LETS

---

### **Sheplegh Court Nr Dartmouth, South Devon**

Lovely two bedroomed apartment in country house set in 30 acres of gardens, woods and parkland. Facilities available include:

- Heated outdoor swimming pool with sun terrace and barbecue area (summer only)
- Conservatory overlooking the gardens and parklands
- All weather tennis court.
- Snooker room with full size table
- Small indoor pool, jacuzzi and sauna

Secluded position on outskirts of award winning village yet within 3 miles of beaches and Dartmouth Golf and Country Club. Available for weekly letting or for three plus days out of season.

**For further details please telephone  
01525 220957 evenings and weekends**

### **Anarita Near Paphos Cyprus**

Recently built luxury villa. 10 mins from airport and 15 mins from Paphos town.

- Three double /twin bedrooms
- Two bathrooms
- Fully equipped kitchen
- Lounge/diner with sky tv/dvd player
- Air-con in all rooms
- Own pool and garden

Beautifully situated in Anarita village, with 2 tavernas, supermarket and bars

**Contact Nicky 07980 735955 or  
email [nicky.corehealth@virgin.net](mailto:nicky.corehealth@virgin.net)  
for brochure and details**

## EATON BRAY VILLAGE HALL

LARGE & SMALL HALL,  
MEETING ROOM, STAGE,  
KITCHEN, LARGE CAR PARK

SUITABLE FOR ALL KINDS OF  
EVENTS:-

- WEDDING RECEPTIONS
- CHILDREN'S PARTIES
- KEEP FIT, BADMINTON
- STAGE PLAYS ETC

TELEPHONE TO BOOK  
YOUR EVENT ON:-

01525 222831  
07975 797202

KEYS TO BE COLLECTED  
BY ARRANGEMENT

## Marc Flack Decorating & General Maintenance

A friendly, reliable service

Painting & Decorating

Gardening

Any other odd jobs!

Local references available

**No job is too small!**  
10 Wivelsfield, Eaton Bray  
**01525 223166**

## Barb Carpets Ltd

Flooring at its very best

---ESTABLISHED 1976---

### Domestic & commercial

Samples to Home or Site

Carpets - Vinyls - Floor levelling

Karndean tiles - Carpet tiles

**Guild of Master Craftsmen**  
**A flooring company built**  
**on reputation over 30yrs**

Call: Dave on 07850 601007

Chris on 07702 601007

Office on 01582 601007

Or find us @

[www.barbcarpets.co.uk](http://www.barbcarpets.co.uk)

## ASTON CLINTON INTERIORS

Kitchens, Bedrooms,  
Bathrooms & Furniture

All services provided...

- Fitting
- Tiling
- Flooring
- Decorating
- Refurbishment



14 London Road, Aston Clinton,  
Bucks Tel: 01442 300695

# K. A. Ray Landscapers

Tel: 01525 221037  
Mob: 07800 888120

For all of your commercial and domestic landscape requirements.

Professional Landscape maintenance and construction Company.

**Qualifications; National Diploma in Horticulture.**

**As seen on ITV**

**RHS medal winner**

As a company we specialise in:

- Garden design
- Hard landscaping
- Soft landscaping
- Quick impact garden makeovers
- Fencing
- Lawn establishment
- Lawn maintenance
- Hedge cutting

In fact we can create a fully tailor made package for each and every garden.

Contact us on :

**01525 221037** [k.a.raylandscapers@hotmail.co.uk](mailto:k.a.raylandscapers@hotmail.co.uk) **07800888120**

**Free estimates and advice.**

Trevor Yeardye



LUXURY BATHROOMS

**DESIGNING AND INSTALLING  
BEAUTIFUL BATHROOMS IN  
HERTS, BEDS AND SOUTH BUCKS  
FOR OVER 20 YEARS.**

*"A Family Business"*

Tel - Trevor Yeardye: 01442 890835

Tel - Clifford Yeardye: 01525 220419

*Please visit our website to view our  
online portfolio:*

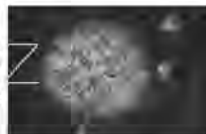
[www.trevoryeardye.com](http://www.trevoryeardye.com)

## Fresh design & cost effective marketing... it's always a Breez

Small, friendly company with a big reputation for results. We care, listen and learn about our clients and their business goals. Be blown away by positive solutions not costs.

Call 07979 945231 or email  
[info.breez@btinternet.com](mailto:info.breez@btinternet.com)

breez  
design and artwork





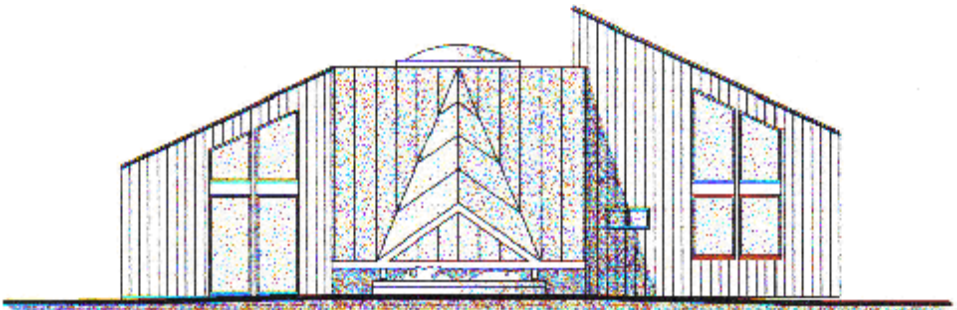
# Eaton Bray Lower School

## TOP MARKS!

*The opening paragraph from the OfSTED inspection report, after their October 2007 visit, said this about EBLs:*

"Eaton Bray Lower is an outstanding school. It modestly evaluates itself as good with some outstanding areas, but it is better than this. Its self-evaluation is correct in identifying strengths and areas for development. It provides an outstanding quality of education and care for its pupils and excellent value for money. Staff work exceptionally well in partnership with parents and the community for the benefit of all pupils. Pupils' enjoyment of school is impressive. The supportive parents are delighted with all aspects of its provision. Leadership and management are outstanding. The headteacher's vision for a school at the heart of its community is shared by the highly committed staff and excellent governors. This is set to become more firmly realised with the building of a new nursery with facilities for the local community and visiting professional from children's services."

**Please come and visit our friendly village school. Phone 01525 220468 or email [eaton@deal.bedfordshire.gov.uk](mailto:eaton@deal.bedfordshire.gov.uk)**



**NOW OPEN:** EBLs Nursery with extended School provision and wrap-around care in a modern, light, environmentally-aware building. Please call at the school (01525 220468) to find out more.



## Mark Janes Contacts

Felt Roofing - All Roofing Repairs  
and Property Maintenance  
**FREE ESTIMATES**



t: 01442 877528

m: 07841 343470

e: mark.janes3@btinternet.com

Established 25 years  
**Approved Contractor  
for Local Authorities**

## CBOS

ARE YOU SELF EMPLOYED  
OR RUNNING A BUSINESS?

- Complete
- Book keeping
- Office
- Support



Your one-stop shop for:

- Book keeping
- Payroll
- Sales and purchase ledger
- Management accounts
- Credit control
- Bank reconciliation
- VAT returns

Contact us at:

Wingbury Courtyard, Wingrave Bucks

Tel: 01296 681969

Email: HazelReynolds@btconnect.com

## *Dominic Woolcott* Painter & Decorator



- Internal & External
- Plastering & Coving
- Insurance Work
- 20 Years Experience
- Competitive Rates

For a professional job call:  
**01525 229682 or 07747 042879**

**David John Harris**



*(Established 1992)*

All Fencing Work • All Gates  
Paving • Patios  
Driveways • Shingle  
Hedge Setting and Cutting  
Grass Cutting  
Turving Specialist  
Exterior Painting Service  
Sheds  
Small Building Work  
Trees & Shrubs Supplied

**Tel/Fax: 01525 221745**  
**Mobile: 07889 143713**

## Abbott Flooring

- Carpet & Vinyl
- Laminate & wood flooring
- Domestic & commercial
- Supply, fitting & adaptations
- Next day delivery
- All work guaranteed
- Free no obligation quotes
- No job to small

We provide a friendly, professional service at very competitive prices. If you require us to supply & fit or you just need some flooring fitted then give us a call.

Telephone 01525 220249  
Mobile 07958 244536

For all your building needs look no further



# BRIGGS

## BUILDING & CARPENTRY SERVICES

Established 1981

For a professional, friendly service call:

**(01525) 221767**

**(07970) 214439**

### Domestic & Commercial

*Extensions  
Renovations  
Conversions  
Alterations*

*New Builds  
Roof Repairs  
Kitchens  
Bathrooms*

*Patios  
Driveways  
Decking  
Garden Walls*

All work Guaranteed

Free Estimates



# Florence Nightingale Hospice Charity

## Diary Dates

Charity No.1119499

Further details of these and all of our events throughout 2009/10 are available from our fundraising team, Lindsey, Andrea or Jean on 01296 429975 and our website: [www.fnhospice.org.uk](http://www.fnhospice.org.uk)

### JUNE

Saturday 6th, Coach day trip to the Isle of Wight - *A chance to explore the Isle of Wight - 126 per person*

Saturday 13th, 20th Anniversary Dance, Aston Clinton Sports & Social Club

Sunday 14th, 10am-4pm Aston Clinton Village Open Day - *Florence Nightingale Duck Race plus lots of side-stalls and entertainment for the family.*

Wednesday 17th, A Day at Ascot Races. - *Coach from Aylesbury to Ascot Races - £40 Silver Ring; £80 Grandstand includes coach, entrance and bucks fizz!*

Throughout June Tea@3 - *Hold an afternoon tea at your home, office or church in aid of Florence Nightingale Hospice.*

Sunday 21st, Midsummer Memory Walk - *A family walk in memory of a friend or a member of your family in this our 20th Anniversary year.*

### JULY

Saturday 4th, 11 am-5pm Open Gardens, Weston Turville - *10 gardens open to the public in aid of Children's Hospice at Home and Gardening Club at WT C of E School*

Saturday 25th, Charity Football Match, Aylesbury Vale FC - *Britannia v Hollyoaks... a fun day of football supported by Mix 96.*

**REGULAR EVENTS:** *Farmer's Market Stall Market Square, Aylesbury, third Tuesday of every month. Promotional Stand, Friars Square, fourth Wednesday of every month.*

---

## The Church Mouse

This was the first meeting of the P.C.C. since the A.P.C.M. Our Churchwarden welcomed each member and especially Eileen Bennett back for a further term of office.

The Parish Profile, a document that has been produced to send to potential candidates to replace Malcolm Grant, is now complete and has been printed and will appear on our website.

A new advert has been placed for a new Organist and Choirmaster the closing date is 25th May.

A letter from the Bishop of Bedford informed us that a Priest in Charge will be appointed instead of a Vicar.

The Parish Council have agreed to take over the care of the flower beds outside the church.

Plans are in hand for Christian Aid Week 10-16th May. There will be a concert in Church on the 10th June at 7.00p.m. in aid of Christian Aid.

A rota is to be arranged to man the Parish Office on a Friday afternoon between 2-4.00p.m.

A flower arrangement on behalf of St. Mary's will be done by Mrs Edna Moore at the Whipsnade Flower Festival.

If you know of anyone who is sick and would like a home visit from a church member please contact Chris Hewitt 01525 222254.

The meeting ended with the Grace.

## Dagnall Weather Station (AONB)

Overall, April has been a settled month with moderate amounts of rain, but it wasn't enough for the gardeners or farmers. There were 4 days when we were close to frost but only one day, 5th April, when the temperature dropped below zero - and this was only for one hour. The average / mean temperature was up 27% at 9.8°C compared with April 2008.

The Dagnall weather station is now live on the web with 15 mins updates from approx 0800-2200 hours each day. <http://myweb.tiscali.co.uk/dagnallweather>.

If anyone has a question, comment or wishes to contact me please email me: [davidgkillick@tiscali.co.uk](mailto:davidgkillick@tiscali.co.uk)

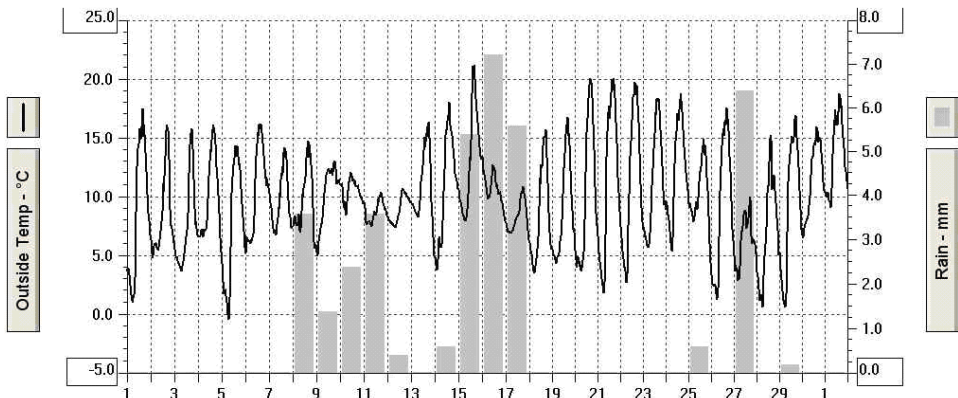


### Weather Conditions for April 2009

**Elevation: 450 ft – Latitude: 51° 50' 13" North - Longitude: 0° 33' 34" West**

	High	Date/Time	Low	Date/Time
Temperature:	21.4°C	15 April 15.30	- 0.4°C	5 April 07.00
Mean Temperature	9.8°C			
Dewpoint:	14.2°C	15 April 13.30	- 0.9°C	5 April 07.30
Humidity:	96%	3 April 08.30	35%	26 April 17.00
Barometer:	1027.8 hPa	20 April 10.00	980.5 hPa	4 April 04.30
Wind Speed	39 mph S	8 April 02.30	Months avg.	5.2 mph
Wind Chill:	20.0 °C	20 April 16.00	- 1.4°C	5 April 08.00
Dominant Wind:	S			
<b>Rainfall *T= total rain days and moisture. R= Actual rain</b>				
*Rain Days: 12 (T), 12 (R)	Wettest Day 16 April		7.2 mm	0.28 ins
Monthly Rain:	Total	April	39.00 mm	1.53 ins
Yearly Rain:	Total	4 Months	198.20 mm	7.80 ins

### Temperature and Rain for April 2009



### Edlesborough Under 5's Autumn Bazaar

Edlesborough Under 5s will be holding its annual Autumn Bazaar on WEDNESDAY 7th OCTOBER 2009 in the Memorial Hall from 2-4pm. Places are limited, however if you would like to book a stall, please contact Claire Smith on 220784 or email [csmith@hotmail.com](mailto:csmith@hotmail.com) for more details. All are welcome - We aim to help raise funds for local businesses as well as our pre-school!



## **Cheeky Monkeys Under Five's Playtime**

We are pleased to report that we now have a website! Check out [www.cheekymonkeys.btik.com](http://www.cheekymonkeys.btik.com). Here you will find everything you need to know about us, including a calendar of forthcoming events. You will also find details of the float that we are organising for the village carnival.

Our thanks to everyone who continues to support our group - we look forward to welcoming new faces. We need as many mums, dads, carers as possible to keep going! Over the last few weeks the children have been enjoying making cotton wool sheep, sowing cress and mustard seeds and making Easter bonnets and baskets. Another table we have recently introduced is the "nature table", whereby the children can create a garden picture with leaves, daisies, grasses etc. On June 17th we will be making Fathers' Day cards and presents. A date not to be missed is July 1st, when we will be eating ice-creams with a choice of delicious toppings! If you are a parent or carer and would like to join our friendly group, please come along to Eaton Bray Village Hall on a Wednesday afternoon at 1pm. Everyone is welcome. We charge £1.50 per adult, £1 per child over 1, and 50p per child under 1. Cheeky Monkeys is run by three volunteer parents, Sarah, 07904 348113, Louise 07784 165259 and Sue 01525 222387. For enquiries please contact anyone of us, or visit our website!

***Remember - keep coming and we will keep running!***

---



### **Free prescriptions for cancer patients**

From 1 April, a person who is having treatment for cancer, the effects of cancer or the effects of cancer treatment does not have to pay for any medication. This applies to all NHS prescriptions, not just those relating to cancer. Patients will need a valid medical exemption certificate which can be obtained from their GP or hospital doctor.

### **Inheritance where there is no will**

There has been an increase in the amount a spouse or civil partner can inherit when someone dies without leaving a will. From 1 February, if a person dies without leaving a will, the remaining spouse or civil partner will automatically get £250,000 if the person who has died also had children. If the person who has died had no children but has parents or siblings still alive, the remaining spouse or civil partner will get £450,000. This is known as a statutory legacy. If a person died before 1 February without leaving a will, the remaining spouse or civil partner will only inherit £125,000 if there are remaining children, or £200,000 if not. It is always best to make a will to avoid the intestacy rules.

### **Pension credit assessed income period**

From 6 April, the assessed income period for some pension credit claimants is to change. An assessed income period is a period during which the claimant does not have to report certain changes in circumstances, for example, changes in the amount of occupational pension received. From 6 April, claimants aged 75 or over may have an assessed income period for an indefinite period rather than for the usual period of five years.

***For more information contact the Citizens Advice Bureau, Grove House, High Street North, Dunstable. Tel: 01582 661384***

***Would you like to join our volunteers? Please contact the above number for more information on volunteering opportunities at Dunstable Bureau.***

## Salvation Sound...June 2009

"If we care to think back over the years  
Where ever have they all gone?  
Whether one is old or middle aged  
Time is the same for every one.  
A year to a month, and then to a week  
Tomorrow will soon be today,  
Time is a mystery we can't understand  
As it flies so swiftly away."

So soon this year is halfway gone!  
Do you ever watch the Time Team on  
television? As the archaeologists dig and  
probe into the past, studying the material  
remains of peoples of long ago. I thought of  
them as I entered the cathedral at St.Albans  
City. It stands proud, towering into the sky,  
and I wondered about all of the artisans  
who had worked there in centuries past to

make that marvellous church a place that spoke of God. Although no human voice at  
that time was raised to proclaim the faith, everything around me spoke of His glory.

This place had for hundreds of years seen people come and go; once it shone with  
newness, now it showed grandeur. Steps were worn, grooved and shallow in places,  
where pilgrims and tourists had visited throughout the years of its history. The sun  
shone through the myriad pieces of stained glass in the lovely windows, casting  
coloured patterns upon the floor. As I sat for a moment of meditation I became aware of  
other examples of small, beautiful aspects to delight the eye; crosses, crowns, flowers,  
worked in wool, the tapestry of the kneeling cushions, for use in times of prayer.

The majesty of my surroundings made me feel very insignificant for a time, until I  
remembered that however many other Christians are "talking" to God, I know that He  
can hear my words.

1 Peter 3 : 12. "The eyes of the Lord are on the righteous, and His ears are open to  
their prayers."

Yes prayer is a conversation with God, so when you fold your hands together this is a  
rough guide to praying...

The thumb is nearest to you - begin by praying for those you love.

The index finger is the pointer - pray for those who teach.

The next finger is the tallest - pray for those in authority over you.

The fourth finger is the weakest - pray for those in trouble.

Then comes the little finger - It reminds us of our smallness in relation to God's  
greatness - ask Him to supply your needs.

Just talk, He wants to hear; you can pray wherever you are:-

"You don't need to make a fuss, When you need to pray,

You don't stand on ceremony, In any way.

You just talk to Him As you would a friend,

With only one difference, Amen at the end."

### The Salvation Army, Booth Place Weekly Activities

#### Sunday

Sunday School 9.45-10.45am

Morning Service 11.00am

Evening Service 6.00pm

#### Sunday Evening (1st and 3rd each month)

Youth Group (age 12+) 7.45-9.00pm

#### Monday

Junior Club (age 8+) 6.30-7.45pm

#### Wednesday

Home League (Ladies Meeting) 2.30pm

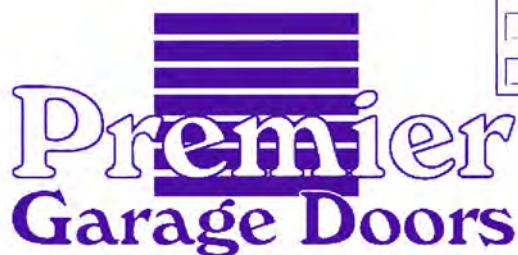
#### Thursday

Baby and Toddler Group 9.30-11.30am

#### Thursday Evening

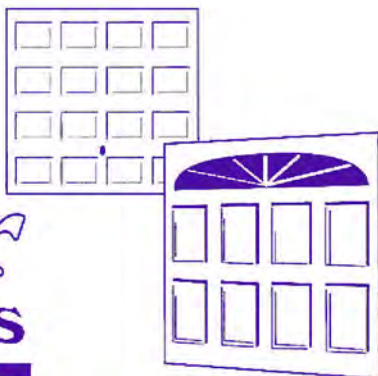
Young Ladies Fellowship 7.45pm

(last Thursday in every month)



# Premier Garage Doors

**MANUAL & ELECTRIC**



## Quality Garage Doors

- ☑ SUPERB CHOICE OF DESIGNS IN METAL,  
WOOD AND FIBREGLASS
- ☑ ANY SIZE DOOR MADE TO YOUR REQUIREMENTS
- ☑ LARGE SELECTION OF SPARES & FAST REPAIR  
SERVICE AVAILABLE
- ☑ NEW OR EXISTING DOORS CONVERTED TO  
AUTOMATIC
- ☑ PROFESSIONALLY FITTED BY OWN EXPERT  
CRAFTSMEN
- ☑ PROMPT FREE ESTIMATES & ADVICE
- ☑ WE COVER ALL AREAS

- DIY KITS AVAILABLE
- INSURANCE WORK WELCOME
- COUNCIL APPROVED
- REMOTE CONTROL GATES ALSO  
AVAILABLE

**(EST 1984)**

UNIT 7 SPARROW HALL FARM  
LEIGHTON ROAD, EDLESBOROUGH LU6 2ES

**01525 220212 OR 01494 773391**

# Janes



Replace your old analogue TV for THIS...



**SHARP 32"**  
**WIDE SCREEN**  
Digital Free View  
High Definition  
**£499**

**FREE** Black Glass Stand worth £79\*  
**FREE** Delivery, Set-up & Tune-in with Demonstration  
**FREE** DISPOSAL OF YOUR OLD TV\*\*  
**OFFER EXTENDED** by popular demand

**OR: THIS...**  
**SHARP 42"**  
**WIDE SCREEN**  
Digital FreeView  
High Definition  
**£829**



\*Whilst stocks last \*\* During Offer Period

**4-8 High Street, Edlesborough, Dunstable, Beds LU6 2HS**  
**Tel: 01525 220208 Fax: 01525 222802**