

# FOCUS

July 2007

**St Mary's Village**

**Carnival 2007**

Saturday 7th July

Edlesborough Green



THE FOUR VILLAGES MAGAZINE

**EATON BRAY**  
**EDLESBOROUGH**

**NORTHALL**  
**DAGNALL**



The White Horse  
at Eaton Bray  
Tel: 01525 220231

[www.the-whitehorse.co.uk](http://www.the-whitehorse.co.uk)

**17th to 21st July**



## A Seafood Special

Even more fresh seafood  
than usual this week!  
We will be providing the  
best seafood that the  
market can supply.  
Grilled, in sauces  
or even with chips!



**15th to 18th August**



## *A Champagne and Caviar Celebration!*

What more refreshing way to enjoy  
summer than with a glass of "Bubbly"  
Your choice available by  
the bottle or glass.  
Why not also have a tasty  
accompaniment of Caviar, Dâté  
or Smoked Seafood?

# Edlesborough Autos

Walton End Garage, Pebblemoor, Edlesborough, Nr Dunstable, Bedfordshire LU6 2HZ

Telephone: 01525 222224 Facsimile: 01525 223113



**MOT while-u-wait**  
**All Vehicle Servicing and Maintenance**  
**Accident Damage and Insurance Repairs**  
*(Free Estimates)*

**Breakdown Recovery Service**  
**Attended Service for Petrol and Diesel**  
**Flo Gas Agent for all sizes of Bottled Gas**  
**Smokeless and Household Coal**  
*The garage shop stocks all workshop consumables  
and general goods for your daily requirements*

**Opening Hours**  
**Monday-Friday 7:30am - 7:00pm**  
**Saturday 8:30am - 5:00pm**



# **Carpet & Upholstery Cleaning**

**Professional & Local**

**All work guaranteed - not happy, don't pay**

**Powerful equipment means drier much  
quicker than other methods**

**100% Guaranteed no chemicals left in carpet  
when dry therefore will not easily resoil  
& perfectly safe for children & pets**

**Recommendations account for 90% of my work**

**Absolutely no hard sell**

**Telephone Colin for a Free Quote**

**DEEP-CLEAN**

**01525 851 811**

**[www.deep-cleaners.co.uk](http://www.deep-cleaners.co.uk)**

**Email: [cbthomas@ntlworld.com](mailto:cbthomas@ntlworld.com)**

**EDLESBOROUGH SURGERY 01525 221630**

**Cow Lane Edlesborough**

**Dr M R Jones, Dr J R Bell,  
Dr Stephanie Johnston, Dr Helena Verwey**

**We offer a full range of health services at the surgery**

**EDLESBOROUGH PHARMACY 01525 223181**

**Pharmacist - Claire Davies**

**Friendly, reliable professional service at the pharmacy  
All doctors, dentists and hospital prescriptions dispensed  
Professional advice always available**

**Over the Counter Medicine**

**Special Orders on Request**

**A range of cosmetics/baby products/seasonal goods**

# **Focus - The Four Village Magazine**

## **Magazine Committee**

**Joint Editors:** George Crutcher - 7 Summerleys, Eaton Bray 221637  
Sally Siddons - 34 Wallace Drive, Eaton Bray 221733

**Email:** [sallysid@hotmail.com](mailto:sallysid@hotmail.com)

**Dagnall Representative:** Sue Cawdell - 10 Deans Meadow, Dagnall 01442 842200

**Northall Representative:** Derrick Bonfield - 'Poppy', Eaton Bray Road 220013

**Circulation Manager:** John Plater - 41 Church Lane, Eaton Bray 221095

**Treasurer:** Ken Coates - 10 The Orchards, Eaton Bray 221117

**Advertising:** Sally Siddons - 34 Wallace Drive, Eaton Bray 221733

**Production Manager:** Tracey Moren (Moren Associates Limited) 01525 229695

Copy for publication to the Editors or one of the following by the **10th of the month:**

Kevin Cabbage - 'Larums', Eaton Bray Road, Northall

Val Barrow - 3 Chestnut Close, Dagnall

*Focus accepts no responsibility as to the accuracy or content of any advertising or articles published in 'this' magazine neither do they reflect the opinion of members of the Committee.*

*© Articles published in Focus may not be reproduced without permission.*

**August Focus will be a joint issue for August & September.  
Don't forget to send in your August & September entries by 10th July.**

## **Facts on Focus**

An additional 4 pages has been added to the Focus magazine due to the gratifying amount of editorial we receive and to allow for an increase in the text size to make it easier to read. To minimise the additional printing costs this change has caused, it has been necessary to reorganise the magazine with regards to the placing of advert and editorial pages.

Kindly note the advertising pages are full for this year, please do not suggest to any tradesmen that they ring me as unfortunately, I only have to turn them away. Any changes to the existing adverts will be at a cost to the advertiser, due to printers charges.

Sally Siddons, Editor

### **EDLESBOROUGH PARISH COUNCIL**

### **BOOKING SECRETARY/CARETAKER**

**Required for Edlesborough Memorial Hall, Pavilion and The Green  
With full support of Parish Councillors**

**Commencing 17<sup>th</sup> August 2007 £8.00 per hour  
Hours flexible to be discussed at Interview**

**Please apply in writing to the Clerk:**

**Lin Sargeant, Pantiles, Eaton Bray Road Northall, Dunstable, Beds.  
LU6 2EU, e-mail:[parish.council.clerk@edlesborough.gov.uk](mailto:parish.council.clerk@edlesborough.gov.uk)**



## Village Diaries July 2007



### Weekly

- Mon-Fri (term time) Eaton Bray Pre-school, Eaton Bray Village Hall, Cindy 07773 095624
- Mon-Fri (term time) Dagnall Under 5's, Dagnall Village Hall, 9.30-12 noon, Mrs Ann Tobin 07816 358342
- Mon-Fri (term time) Edlesborough Under 5's Pre-School, Edlesborough Memorial Hall, Sue Connor 01525 222739
- Tuesdays Yoga Classes, Northall Village Hall, 1.45-3.15pm 01525 377542
- Tuesdays Line Dancing, 1.30-3p.m., Eaton Bray Village Hall, Lyn Stubbs 220731
- Tuesdays Baby Cafe (Support for Breastfeeding mums), 10.15 - 11.45 am, Pitstone Memorial Hall
- Tuesdays FITKID, 6-7pm, Eaton Bray Village Hall, Caroline 08445 606432
- Tuesdays Totterhoe Baby & Toddler Group, 9.30-11.30am, Totterhoe Village Hall, 07986 730922
- Tuesdays Fortnightly Coffee Morning, Bring & Buy, Table Top Sale, 10-12noon, Salvation Army Hall, Booth Place, Eaton Bray
- Weds (term time) Eaton Bray Under 5's, 1.15-3pm Eaton Bray Village, Hall Cindy 01582 477568
- Wednesdays Chi Kung & Wu Chi classes, Coffee Tavern 11am - noon
- Thurs (term time) Mums & Toddlers session, Dagnall Village Hall, 1-3pm
- Thursdays Yoga Classes, Northall Village Hall, 11.30am-1pm
- Thursdays Keep fit, 2pm, Eaton Bray Village Hall, Mrs Johnson 220304
- Fridays SOCATOTS, 12:45, Eaton Bray Village Hall, Daniel Walker 07968 778681
- Fridays (term time) The Venue for 8-12s @ Grace Community Church, 7.00-8.45 pm, Bruce Moulding 01525 221601
- Saturdays Jazzercise, Eaton Bray Village Hall, Angela Veryard, 715208

### Monthly

- 1st Monday Eaton Bray Parish Council Meeting, 7.30pm, The Coffee Tavern
- 1st Monday Eaton Bray W.I. Meeting, 7.30pm, Eaton Bray Village Hall, Contact Sheila Beal on 01525 221185
- 1st & 3rd Tuesday Dunstable & District Orbit Club meet in central Dunstable at 8pm. For details contact 01525 222441 or 01582 755147
- 1st Sunday Grace Community Church meeting, 3.30 pm, all welcome, Bruce Moulding 01525 221601
- 2nd Tuesday Toddlers' Church, St Mary's, Eaton Bray, 2.00pm
- 2nd Tuesday Dunstable & District Local History Society meeting, 7.45pm, Methodist Church Hall, Dunstable

2nd Tuesday	Edlesborough W.I. Meeting, 7.30 pm, Edlesborough Memorial Hall
2nd Wednesday	8.15pm Healing Service in St Mary's Church
2nd Thursday	CAMEO Coffee, tea & chat, 10am-12noon, Edlesborough Methodist Church
3rd Thursday	Edlesborough Parish Council Meeting, 7.30pm, Memorial Hall
3rd Sunday	Lunch club 11.30 to 2.00pm, Eaton Bray Village Hall, Chris Hewitt 222288

**Other Regular Events**

13th	Leukaemia Research Coffee Morning, 2 Dunstable Road, 10.30 am
11th & 25th	Bingo, Dagnall Village Hall, 8pm
24th	Dagnall Over 60s Garden Party at 1, Chestnut Close, 2pm (Village Hall if wet)

**One Off/Annual/Irregular Events**

7th	Dagnall Under 5's, Quiz Night 5.45 pm in the Village Hall.
21st	BBQ Taskers Row, Edlesborough, 2.30pm - 4.30pm

## **Change Your World**

Obesity, climate change and oil use are urgent issues today, and during 2007 we want to offer some of the solution. The humble feet and bike, as well as public transport, offer a great opportunity to achieve everyday physical activity and to reduce carbon emissions and our dependence on oil.

This year is the 30<sup>th</sup> anniversary of Sustrans, the \*National Cycle Network people. During the week of July 1-7 Sustrans are launching "Change Your World" a campaign highlighting the impact our travel choices have on the environment. The very positive message is that if each one of us changed just one return journey a week made by car to one made by foot, bike or public transport, together we would reduce car traffic by at least 10% Please visit [www.changeyourworld.org.uk](http://www.changeyourworld.org.uk) to make the pledge and more importantly urge at least 10 other people to do so. This way Sustrans will celebrate their 30<sup>th</sup> anniversary year by doing what they have always done – bring about change by demonstrating that it is possible.

Residents of local villages are very fortunate living in such a lovely area. Next time you have a journey to make think, is the car really necessary? Try to plan ahead, you may find you can easily walk or cycle to your meeting, to see a friend, the shops, doctors surgery, school, church etc. and by doing this there will be one less car on the road and it is better for you. Please make the pledge now!

Angela Feaviour, Volunteer Ranger NCN Route 6

\*The National Cycle Network is a comprehensive network of safe and attractive routes to cycle throughout the UK. 12,000 miles are completed, one third of which is traffic-free and the rest follows quiet lanes or traffic calmed roads. It is delivered through the policies and programmes of over 450 local authorities and other partners and is co-ordinated by the charity Sustrans.

[www.nationalcyclenetwork.org.uk](http://www.nationalcyclenetwork.org.uk)



## Edlesborough W.I.

Our May meeting was the annual Resolutions Evening, when we discussed and voted on the resolution to be put to the A.G.M. of National W.I. (N.F.W.I.). The usual business started off the evening, when Brenda Shields and her helpers were thanked for organising Members' Night the previous month. Phrena, our President, gave an account of the recent half-yearly Council Meeting of the Bucks Federation. She also read out a letter of thanks from the Iain Rennie Hospice at Home for the donation of money we had raised at our recent coffee morning. We heard that two pieces of our work had been requested by the National Needlework Archive, to be shown at an exhibition of W.I. Needlecraft at Denman College. The displays would later go on tour around the country. It was agreed to submit our W.I. Banner and the handmade cover of our W.I. Book.

'This resolution urges H.M. Government to stop the closure of Community Hospitals, which provide essential services to local people' is the wording of this year's W.I. Resolution. Elizabeth Braiden outlined this to members, and strong opinions both for and against were expressed. After discussion 27 members voted for the resolution, 9 against and 6 abstained. Our representative at the national A.G.M. will vote on our behalf. Elizabeth was thanked for the research she had carried out on our behalf.

Our evening came to a close with a tasty cheese and wine supper.

Val Harris

# PINSTripES

## SPECIALISTS IN SIGNS & GRAPHICS

CAR BIKE & VAN GRAPHICS

SIGN BOARDS

LORRIES HORSEBOXES

SHOP SIGNS

WHEEL COVERS

AND

VEHICLE MAGNETICS

WINDOW DISPLAYS

VINYL TEXT & LOGOS

PRINTED STICKERS & PHOTOS

A BOARDS

LABLES

BUILDERS BOARDS

BANNERS-BUNTING-FLAGS

**01525 220485**

**07973 167779**





Quality Flooring  
and Installation  
at Affordable Prices

- ◆ **Laminate**
- ◆ **Real Wood**
- ◆ **Carpets**
- ◆ **Karndean Vinyl**

For a **FREE**, no obligation quote, please contact me, Michael Bishop, on either number and I will be happy to visit you in your home.



Master Fitter

"Excellent service and a beautiful floor expertly installed. I would highly recommend Aspley Flooring" *S.Stilliard, Edlesborough.*

"Your workmanship has created a beautiful floor, I shall have no hesitation in recommending you or using your services again" *A Satisfied Customer, Edlesborough.*

t: **01908 587332** m: **07977 575010**

30 Years Experience  
Domestic & Commercial Security



- Burglar Alarms
- Redcare Monitored Systems
- Intercoms
- CCTV
- Access Systems
- Locks



CERTIFICATE NO. NAC/G/2113

Quality Installations – Competitive Prices  
Insurance Approved Free Surveys

**AAA SECURITY**

**01525 378222**

Slicketts Lane, Edlesborough, LU6 2JD



## Dagnall News

### Over 60's

On June 19th the members enjoyed a Ploughman's Lunch in the Village Hall. Although this has been an annual event for some years it continues to prove very popular with the members.

In July we have accepted an invitation from Mr. & Mrs. Yorke to visit them for our Annual Garden Party. We look forward to good weather on July 24th.

### Dagnall School

The School Council at Dagnall School organised their first event for Friendship Friday. This was to raise money for Save the Children Fund. The children organised the whole day which involved swapping a scarf with a friend, dance displays, friendship bracelets, a non-uniform day and an Art Sale.

The Chaffinches surprised everyone by baking a cake decorated with their initials for each child and member of staff in the school. A fun day was had by all, and £76.61 was raised for this worthy cause. The school has launched its new Friendship Bench, Buddy Bus Stop and Friendship Squad. The Bench was purchased with money donated by the parents of the children who left in July 2006. Thank you all. The Friendship Squad, wearing their own smart caps, can offer to help any child who is feeling lonely. Sitting on the Friendship bench indicates that they may need someone to play with or talk to. Well done to the School Council!

### Dagnall Village Hall

The Village Hall Committee are pleased to tell you that, despite the weather, the annual Fete on May 12th made a fantastic profit of £3786. Thanks to all who participated. A fuller report will be included in next month's issue of Focus.

**The Friends of Dagnall School** would like to thank everyone who came along to the Fashion Show in April. It was a massive success and we raised £706.20. Watch this space for details of another coming up soon.

---

## The Bell Edlesborough

We are pleased to announce that the Bell public house in Edlesborough has reopened after refurbishment. Andy and Alex Maddern are the new landlord and landlady and also in residence is their seven month old daughter, Lizzie, and the two black and white cats, Dylan and Charlie.

The bars have been given a facelift and are now non-smoking, creating a clean and pleasant environment. The usual range of lagers, ales, spirits and soft drinks are available plus two reds, two whites and a rose wine. Tea and coffee complete the list. The Bell is currently serving sandwiches and baguettes and once the refurbishment of the kitchen is finished, a bar menu will be in operation. Food will also be available for special events, starting with a pig roast or barbecue for carnival day on the 7<sup>th</sup> July. Children will be welcome in the bars until 8.30pm and the garden is gated to make a contained area.

Andy and Alex are pleased to see that new faces are coming into the pub every day, sometimes for the first time, some returning after a period away, and we would like to thank everyone for their support and positive comments.

Andy and Alex Maddern, The Bell Public House, Church End, Edlesborough 01525 222957



**EDESBOURGH  
TENNIS CLUB**

Website by [Jupiterwill](#)

**[www.etctennis.org](http://www.etctennis.org)**

**Play tennis   Have fun   Socialise   Feel good   Join our club**

**Join via the website, or call Iona McLean-Hall on 01525 220562 for details**



## **Safe Deposits**

From 6 April, landlords who take a deposit for an assured shorthold tenancy must use one of three government-approved tenancy deposit protection schemes to safeguard the deposit. They must also give their tenants information about the scheme within 14 days of taking the deposit. If a landlord does not protect the deposit through one of the schemes or give the tenant the required information, the tenant can take action in the county court to get the deposit protected or repaid as appropriate. The landlord will face a fine of three times the amount of the deposit and will not be able to use the assured shorthold procedure to claim possession from the tenant on only two months' notice (without grounds).

The tenancy deposit protection schemes safeguard deposits, so that tenants are guaranteed to get them back at the end of the tenancy, provided they are entitled to do so. Each scheme provides an alternative dispute resolution service.

## **School Discipline**

Since 1 April, schools have had new statutory powers to discipline pupils. This includes the legal right to confiscate inappropriate items from pupils, for example, mobile phones or MP3 players; legal powers to discipline pupils who behave badly on the way to and from school, for example, when travelling on buses or trains; greater powers to give pupils detention, including after school and at weekends, without parental consent, provided adequate notice is given; and the legal duty to make provision to tackle all forms of bullying.

From 31 May, headteachers (or people authorized by them) are allowed to search pupils if they suspect a pupil may have a knife or other offensive weapon. Such searches can be carried out without the pupil's consent. Schools can also, from this date, use 'airport style' metal detector arches and wands to search pupils for weapons without their consent.

*For more information contact the Citizens Advice Bureau, Grove House, High Street North, Dunstable. Tel: 01582 661384. Do you know anyone who would be good at advising and helping people? If so Dunstable Bureau is the place to be. Please contact the above number for more information on volunteering.*

**AZURE  
POOLS**



**Professional Pool & Spa Solutions**

**POOLS**  
**ARCTIC SPAS**

**POOL & SPA**  
**CHEMICALS**

**SAUNAS**  
**ABOVE GROUND POOLS**

**WE ARE MOVING TO:**

Leighton Buzzard Garden Centre,  
Hockliffe Rd, Leighton Buzzard

**WE JUST GOT BIGGER!!**

**01525 223 127**

[www.azure-pools.co.uk](http://www.azure-pools.co.uk)

[www.hottubs4u.co.uk](http://www.hottubs4u.co.uk)



# P. DYER ELECTRICAL

*For all your Testing & Inspection needs*

- *Re-wires*
- *Testing & Inspection*
- *Security Systems*
- *Security Lighting*
- *Decorative Lighting*
- *PAT Testing*
- *Fuse Boards*
- *Landlord Certificates*

All work guaranteed. Fast, friendly, reliable, local electricians.  
For a free, no-obligation estimate, call Paul on:



**Tel: 01525 222109**  
**Mobile: 07850 682815**



# EDP

EDLESBOROUGH DENTAL PRACTICE

- Preventative Dentistry
- Dental Hygienist
- Cosmetic Dentistry
- Treatment For Snoring
- Implants

*The very best in quality dental care*

EDLESBOROUGH DENTAL PRACTICE  
11 Cow Lane | Edlesborough | Dunstable | Bedfordshire LU6 2HT

**01525 223175**

[www.edlesboroughdentist.co.uk](http://www.edlesboroughdentist.co.uk)

## **Eaton Bray with Edlesborough Parish News**

**Vicar: Canon Malcolm Grant**

**The Vicarage, 11 High Street, Eaton Bray - Tel: 01525 220261**

**Hon. Assistant Priest: The Revd John Heffer**

**35 Pebblemoor, Edlesborough - Tel: 01525 220618**

Elsewhere in *FOCUS* you will find information about the EDaN Project, working to prepare a Parish Plan for the Civil Parish of Edlesborough (which, of course, includes Dagnall and Northall – hence the acronym). The Plan will try to express the priorities and hopes of the whole community for its future, and it gives residents an opportunity to create the agenda and express their opinions. The finished Plan will help the Parish Council to set its strategies, and give it weight in its dealings with the District and County Councils, where many of the major decisions will have to be taken.

People have said what they like and dislike in our villages in the recent open days – and some clear concerns are emerging, even at this stage. In the near future a questionnaire will be going to every household in the Parish, and the Project Steering Committee (all volunteers, by the way) looks forward to being inundated with replies! Seriously – we want everyone to complete the questionnaire so that we have as full a picture as possible of what you, the people of these villages, would like to see happen.

“Community” is one of those words we use without stopping to think what it really means. Many people have chosen to live here to enjoy that special sense of community which belongs to a village. But that sense of community doesn’t just happen; it has to be generated and maintained, or it soon decays. “Community” arises out of meeting together and doing things together, not just out of living side by side. People used to meet in the shops, at the bus stop, in the pub, at the school gates, and at social events which marked the rhythms of village life, and this is what created that special sense of belonging together. Nowadays, most people travel by car, shop in the supermarkets in town and have much more sophisticated tastes for entertainment. In addition there are the pressures of work and commuting, financial pressures, and an individualistic approach to leisure dominated by television and computer. All these modern tendencies are eroding our experience of being part of a real community.

“Community” is something we have to contribute to, as well as benefit from. I am conscious of how many voluntary activities in our villages are creaking along because it is so difficult to find volunteers to help run them. I don’t just mean the church (although it is certainly true there!). Running village halls, sports activities, facilities for our young folk, making improvements to our environment are just a few examples of the areas of community life which need supporting. If we want these things to happen, then we all need to be willing to support them actively. That’s what really makes community.



We can devise impressive plans but unless folk are willing to give time and effort to make them happen, they are of no avail. I often hear people saying “the village isn’t like it used to be”, and that usually means we live more isolated lives with a consequent loss of community spirit. The EDaN Project challenges us all (residents of Eaton Bray as well as Edlesborough, Dagnall and Northall) to ask what we are prepared to contribute to our local community as well as what we want to gain from it. Do you remember that famous speech of President J.F. Kennedy: “Ask not what your country can do for you, but what you can do for your country”? The same is true at the local level.

MALCOLM

**Baptisms – “Brought to new birth in the family of the Church”**

May 27 Jessica Ruth Neville

**Funerals – “Grant them, O Lord, eternal rest”**

May 29 Barry Lyne Hooper of School Lane, Eaton Bray



**Services at St Mary’s Church**

**SUNDAYS: 8.00am** – The Eucharist

**10.00am** – **PARISH SUNG EUCHARIST** (with Sunday School).

**On Second Sunday of each month:**

**10.00am** – **WORSHIP FOR EVERYONE** – a less formal service with Holy Communion

**WEEK-DAYS: Tuesday: 7.30am** - Eucharist

**2.00pm (2nd Tuesday)** - Toddlers’ Church

**Wednesday: 9.30am** - Eucharist

**8.15pm (2nd Wednesday)** – Healing Service

**Thursday: 7.30pm** - Eucharist

**(on 2nd Thursday at All Saints’, Dagnall)**

*EVERYONE WELCOME AT THESE SERVICES*

**Church Trails**

Our Parish Church is one of many local churches which is open to visitors on the first Sunday of each month in the summer, 2-5pm.

Although it is open every day for anyone who wants to drop in or to spend some quiet time, on these Sunday afternoons, refreshments are available, and someone is on hand to talk about its history and its architecture.

On the first Sunday in August there will be a display of photographs and records. Why not come along and find out a bit more about our heritage?

**Eaton Bray Cricket Club**

**100 Club - June 2007**

£25 D Pearson No 102

£10 Yvonne French No 95

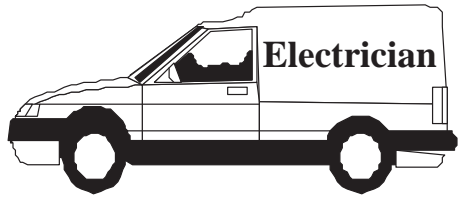
Eaton Bray Cricket Club is kindly sponsored by F.A.Hawkins & M & M Properties



**M.J. BROUGHTON**  
**QUALITY DECORATING**  
*Interior and Exterior*  
 ALL WORK CARRIED OUT TO THE HIGHEST STANDARD  
 For a free estimate with no obligation ring  
**01525 - 222764**  
 8 SUMMERLEYS, EDLESBOROUGH.

**P.J. BRINKLOW**

**Electrical Contractor**



**Most types of electrical  
 work undertaken**

**Tel; 01525 220469**

**Mob; 07860 781330**

**43, Pebblemoor,  
 Edlesborough**

**Janes**

*Carpets and Flooring*



We carry a wide range of  
 Weaves, Twists & Natural Carpets Vinyl & Quick Step Laminate  
 KARNDEAN The warm alternative to WOOD & CERAMIC TILES

**AFFORDABLE & COMPETITIVE PRICES**

**NO DEPOSIT**

**INVOICE ON COMPLETION**

**SAMPLE TAKE AWAY SERVICE**

We are happy to visit you at your home For a FREE no obligation quote.

**High Street Edlesborough Nr Dunstable Beds. LU6 2HS Tel: 01525 220208 [www.janesitd.co.uk](http://www.janesitd.co.uk)**

# CHARTERED ACCOUNTANT



**01525 221676**

**OPEN 7 DAYS / EVENINGS  
FRIENDLY LOCAL SERVICE  
COMPETITIVE FEES**

**MIKE A. SUTCLIFFE**

**213 CASTLE HILL ROAD  
TOTTERNHOE, BEDS, LU6 2DA**

**Lynwood Antique Restorations**

With over 20 years experience in antique restoration. Specialising in traditional Antique Restoration, French Polishing, Turning, Leathering and Upholstery

All Cabinet making undertaken

Trade or Private Welcome

**Simon Lewis**  
**T: 01525 222950**  
E: [simon@lyncot.co.uk](mailto:simon@lyncot.co.uk)  
Lynwood Cottage, Leighton Road, Northall



## *Patricia's Cuisine*

Catering For All Occasions

- Buffets, Dinners
- Christenings, Weddings, Funerals
- Promotions & Business Lunches

*For Enquiries & Menu*

Meadside Farm, 104 High Street,  
Eaton Bray, Bedfordshire, LU6 2DP

**Telephone: 01525 222174**

## **BARRY CATO**

### **MOTOR REPAIRS**

*Servicing, repairs and*

*MOT's arranged*

**Workshop at:**

r/o Norfolk House Farm, Harling Road  
Eaton Bray, Dunstable, Beds, LU6 1QY

Tel: 01525 221681 (workshop)

07836 650015 (mobile)

# SPOTLESS

## Domestic Cleaning Service

- \* Weekly \*
- \* Fortnightly \*
- \* One-offs \*

- Fully Insured
- Family Run Business
- Free In Home Quote
- References Available
- Window Cleaning
- Carpet Cleaning

**Gary & Lorraine Ross**

**Tel: 01296 580203  
or 07796 406717**

# Moore's

**DUNSTABLE'S DEPARTMENT STORE  
21-23 HIGH STREET SOUTH,  
DUNSTABLE, BEDFORDSHIRE  
TEL: 01582 662638  
EMAIL: mooresd@globalnet.co.uk  
www.mooresofdunstable.co.uk**



**Blockpaving, Patio Specialists and  
Groundwork undertaken  
Telephone 01582 704495  
Mobile 07958 717248  
Free Quotations**

# SOVEREIGN WILL & PROBATE

- ✓ Inheritance Tax avoidance
- ✓ The best provision for children

Wills can **double** a couple's inheritance tax free entitlement and **avoid over £120,000 tax**  
(Includes anyone **widowed** in the past 2 years)

**40%**  
inheritance tax  
starts at  
**£300,000**

# 01525 220644

DAYTIME & EVENING  
APPOINTMENTS

*A Solicitor's Service in the Privacy of Your Home*



**Your Village**

**Estate Agents**

**The Complete Professional Property Service**

Independently owned and established for over 30 years, fully staffed by experienced mature and professional people giving an expert and friendly service.

All village properties are on display and offered from our Dunstable and Eaton Bray/Edlesborough offices with advertising in Beds/Bucks/Herts and North London and via our excellent Website & Rightmove.

**Move with the name you can trust.**

65 Moor End, Eaton Bray

Tel: 01525 221313

**[www.densons.co.uk](http://www.densons.co.uk)**



# **GATES**

**Plumbing & Heating Ltd**

**Specialising in all types of  
Plumbing, Gas & Oil Heating**

**Tel: 01296 670445**

**Email: [plumbing@gates100a.fsnet.co.uk](mailto:plumbing@gates100a.fsnet.co.uk)**

**CORGI & OFTEC registered**





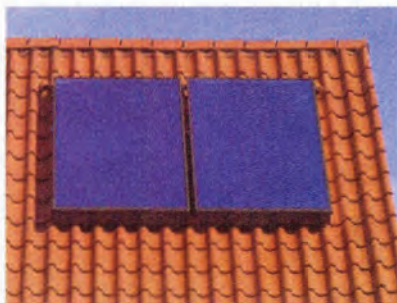
## UNICORN WINDOWS LTD

*Quality and Service from  
Your Local Company*

- Quality Windows, Doors, and Conservatories
- Internally glazed for high security
- High security locks on all windows, doors and conservatories
- Full 10 year insurance backed guarantee
- Specialist box sash replacement



## SOLAR PANELS by UNICORN WINDOWS LTD



- Clean environmentally friendly - For all types of roof
- Extremely cost effective
- State of the art technology
- High quality materials guarantee durability and reliability
- Latest control technology

Call free on: **0800 092 5212**

Head Office and Factory: Unit 3 & 4 Youngs Ind. Est.  
Stanbridge Road, Leighton Buzzard, Beds, LU7 4QB  
Tel 01525 854272 [sales@unicornwindows.co.uk](mailto:sales@unicornwindows.co.uk)





# E&C GARDEN DESIGN

Garden Design, Amenity & Horticultural Consultant

Chartered Surveyors



01525 220780



cardio



strength



stretch



**DUNSTABLE CLASSES:**

MON 7.45PM Northfields Sch

WED 7.45PM Queensbury Sch

TOTTERNHOE & EATONBRAY

THUR 9.30am St Giles Ch Hall

SAT 9.30am E B Village Hall

Info on above Tel: 01525 715208

Or for kids classes 07790236087

**TRING CLASSES:**

TUES 7.30 p.m. Goldfield Infants Sch

WED 9.30 a.m. Red Cross Hall

THURS 7.30 p.m. Grove Road Primary

Info on above Tel: 01525 371553 or go to

[www.jazzercise.co.uk](http://www.jazzercise.co.uk)

# jazzercise®

FREE CLASS WITH THIS AD!

## HALL FOR HIRE

- Bar & Kitchen
- Discount for Villagers
- Membership Available
- Club Bar Prices
- Family Events Every Month

**EATON BRAY  
SPORTS & SOCIAL CLUB**

For Details phone 07709 725803

Realise your **child's** potential

**Maths and English After-School Programmes**

Kumon programmes:

- work at a pace tailored to your child's needs
- give their confidence a real boost
- develop invaluable study habits and concentration
- complement the school curriculum

Contact your local Instructor today.

Christina Wade  
DUNSTABLE STUDY CENTRE  
**01525 222505**

**KUMON**  
Every child can shine

[kumon.co.uk](http://kumon.co.uk)

## All Plumbing Repairs and Installations

**Domestic & Commercial**

- Dripping taps
- Sinks
- Overflows
- Cylinders & Tanks
- Immersion heaters
- Showers & Bathrooms etc
- Leaks, Bursts & Blockages
- Insurance work undertaken



City and Guilds  
Qualified Engineer



No call-out charge, free estimates

**D. NICHOLSON PLUMBER**

**01525 872335**

Mobile: 07976 975604

Glebe Farm Cottage, Dunstable Rd, Toddington



## **New Recycling and Refuse Service will Reduce Landfill**

You may have heard that, in an effort to make a difference in this area, South Bedfordshire District Council is joining over a third of all councils across the United Kingdom in introducing a new weekly collection system on 3 September 2007.

Before the scheme starts we will provide you with an orange-lidded wheeled bin for all your dry recyclables. The bin will be the same size as your black-wheeled bin. Every household will receive a calendar prior to the start of the scheme to confirm your collection day.

The new service will mean that householders will have their refuse (black bins) collected during one week and their recyclable waste (orange lidded bins) during the following week. The current fortnightly composting (green bin) collection service will continue as it does now. The weekly refuse and communal recycling service to blocks of flats and properties on black sack collections will remain unchanged. The council is currently increasing the provision of bring sites for recycling glass, textiles, cans, paper and card. The new sites will be advertised as soon as they are operational.

### **Why is South Bedfordshire District Council introducing a new recycling and refuse service?**

- This will massively reduce the amount of waste being placed in landfill. Space at landfill sites is running out and the landfill tax charges councils have to pay are increasing. In 2007 the cost to tip at landfill is £24 per tonne by 2010 this cost will be £48 per tonne.
- The system has been introduced successfully by a number of local authorities throughout the UK and is proving to be the most effective way of both increasing recycling and dramatically reducing the waste placed into landfill. There are now well over 190 councils providing collections on a similar basis in England, Wales and Scotland.
- We only receive a small amount of your council tax to enable us to provide you with a refuse and recycling service. In 2005/6 it was £42 per year or 80 pence a week. This covers you for all waste and recycling collections and disposal.
- We are aiming to recycle about half the domestic waste we produce in South Bedfordshire. With your help, by separating your waste at home, half our collection services will be full of recycling.

### **The benefits to the environment are:**

- A reduction in the amount of waste sent to landfill.
- A reduction in harmful gases being released into the atmosphere from landfill, which is a contributing factor to climate change.
- A reduction in potential pollution to your natural environment.

- The preservation of valuable natural resources through reusing and recycling as much as possible.

### **What about the rumours of pests being attracted to the waste?**

Covering food waste before it is placed in the bin and keeping the bin lid closed at all times minimises the timescale for flies to land on the food and the potential for maggots to grow. Wrapping any food waste before it is placed in the bin will further help this.

### **Where can I get more information?**

During the months leading up to 3 September 2007 households will receive leaflets explaining the scheme. You may also have a visit from our Recycling Support Officers or spot our trailer out and about at one of the many events planned in the District this summer.

The scheme begins on 3 September 2007 and until this date please continue to use your current service.

For further information, waste minimisation tips and a timetable of where South Bedfordshire District Council's Recycling Officers will be visit [www.southbeds.gov.uk](http://www.southbeds.gov.uk)

---

### **EDaN (Edlesborough Dagnall and Northall) Project Update at 8th June 07**

At the time of writing we have completed 2 very successful and enjoyable Open Days in Dagnall and are busy preparing for the Northall Open Day and Edlesborough Open Day. Let's hope you all had chance to air your views about your parish.

**What happens now!** – All your comments and responses are being summarised and will be forwarded to Edlesborough Parish Council for an interim review prior to the final EDaN Project Parish Plan being completed.

The next step in the process for the EDaN Project steering group is to compile a questionnaire giving everyone an opportunity to make their input to the plan. This questionnaire will be sent to every household in the Parish. The questionnaire will be based on the issues you have raised at our open days and will give us detailed data to enable us to prioritise issues and publish an Action Plan.

**IMPORTANT** – When your questionnaire arrives please make sure you reply promptly – **YOUR PARTICIPATION WILL COUNT to ensure we have a balanced view.**

Thank you to everyone who has participated and contributed so far. A special thank you to Dagnall and Edlesborough Schools for their loan of Display boards and equipment. Thanks also to Dagnall Church, Edlesborough and Dagnall Village Halls, Edlesborough Parish Council, Edlesborough School and The Swan, Northall for use of their facilities for meetings and open days and loan of equipment.

[www.edlesborough.gov.uk](http://www.edlesborough.gov.uk) – click on **Parish Plan** for further information.

# Dunstable

47 Edward Street,  
Dunstable,  
Bedfordshire LU6 1HE

## WORKTOP SPECIALISTS

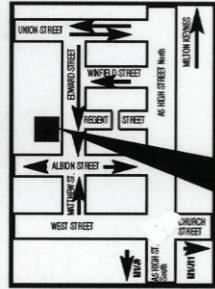


TOILET CUBICLES

CUT AND EDGE SERVICE  
POST-FORMED WORKTOPS



Email: [sales@dunstablelaminates.co.uk](mailto:sales@dunstablelaminates.co.uk)  
[www.dunstablelaminates.co.uk](http://www.dunstablelaminates.co.uk)  
[www.toiletcubicles.co.uk](http://www.toiletcubicles.co.uk)



WE ARE HERE

Send your specifications, drawings or sketch by fax or email.

Fax: 01582 608227

Tel: 01582 668973

## Computer Support & Services

- ☐ After-sales services and support
- ☐ Windows troubleshooting
- ☐ Upgrades and repairs
- ☐ Computer hardware & software sales
- ☐ Internet & email assistance
- ☐ Network installations
- ☐ Web site design
- ☐ Basic & individual tuition
- ☐ Home visits

Computamation Services Ltd

☎ Daytime: 01525 378939

☎ Evening: 01525 261381

email: [john@computamation.co.uk](mailto:john@computamation.co.uk)

## in good spirits



### mobile bars

tel/fax: 01525 220443 mob: 07702 712856

[ellie@ingoodspirits.co.uk](mailto:ellie@ingoodspirits.co.uk) [www.ingoodspirits.co.uk](http://www.ingoodspirits.co.uk)



## WASHING MACHINE REPAIRS

ALSO  
DISHWASHERS, TUMBLE DRIERS,  
AND ELECTRIC COOKERS



Call  
**ANDERSON D.R.S.**

**01582 665764**

[www.andersondrs.co.uk](http://www.andersondrs.co.uk)  
SALES AND RENTALS AVAILABLE

Buy Direct From Our  
Own Farm

Master Card

VISA

From **Ivinghoe Turf**

- Commercial & Domestic
- Small Orders Welcome
- Bark, Grass Seed & Fertiliser
- Laying Service
- Discount on Larger Orders
- Screened & Blended Topsoil
- All Year Availability
- Forklift Delivery Available



**ROLAWN**®  
Approved Rolawn  
Stockist

Family firm farming since 1949

**ALL AREAS**

Freephone :

**0800 043 5061**

[www.ivinghoeturf.com](http://www.ivinghoeturf.com)

The Bungalow, Vicarage Farm, Ivinghoe, Leighton Buzzard

## AARON FENCING

ALL TYPES OF DOMESTIC & COMMERCIAL  
FENCING & DECKING WORK UNDERTAKEN

- FREE ESTIMATES
- FULLY QUALIFIED & INSURED
- PERSONAL SERVICE AT COMPETITIVE PRICES

**TEL: 01582 665779**

**MOBILE: 07798 927272**

7 STATION ROAD, DUNSTABLE, LU5 4HS

## *Curtains 4 u*

Jan Robinson

Phone/Fax: 01442 843454  
Mobile: 0777 9029140



**Curtains with a  
certain Flair**

Very competitive rates for  
all your soft furnishing needs.  
Hand finished curtains a speciality  
Alterations and own fabric work undertaken

## *Garden Care*

of Slapton

Traditional Garden Maintenance  
and Landscape Services

Free Estimates & Advice

Telephone Eaton Bray 221454

Mobile 078302 86837

## BURDETT BUILDERS

General Builders

Plumbing • Heating

& Electrical Engineers

Specialists in Hardwood Joinery

**01525 222793**

## A J WARING CARPENTRY SERVICES

*Local, experienced, & Fully Qualified.*

*All Carpentry Jobs Undertaken*

Contact now to avoid disappointment.

**Phone/Fax 01525 240691**

**E-mail [andrew.waring2@virgin.net](mailto:andrew.waring2@virgin.net)**

## **ARC Contract Services Ltd**

- Wallpapering and painting
- Laminate Flooring • Covings
- Tiling • Bathroom installations

Quality work at affordable prices  
Insurance work undertaken  
All work guaranteed for 5 years  
Public liability insurance cover



**FOR FREE PROFESSIONAL QUOTATION**

**CONTACT ADRIAN ON: 01582 539179 or  
07789 730580**

## ★ Star Performers ★

Modern/ Pop, Ballet, Tap,  
Musical Theatre & Drama

Northall Village Hall &  
Forster Institute Linslade

A fun way for all children aged 4-16  
to keep fit & Healthy

For an information pack call

**07843 272791**

Places are limited

## **Toddington Fishery**

Hearn Farm Cottage, Park Road, Toddington

- ◆ Carp
- ◆ Cat Fish
- ◆ Tench
- ◆ Bream
- ◆ Roach
- ◆ Rudd
- ◆ Perch
- ◆ Chub
- ◆ Cruisan Carp

*For a good day's fishing in peaceful surroundings*

**For Details Phone: 07855 321781**

**[www.toddingtonfisheries.co.uk](http://www.toddingtonfisheries.co.uk)**



## **WHERE CUSTOMER CARE AND SERVICE STARTS CARPETS - VINYL WOOD FLOORING SPECIALISTS**

**LARGE RANGE OF REMNANTS AND  
DISCONTINUED RANGES AT FACTORY PRICES**

**SHOWROOM NOW OPEN AT**

**21C ICKNIELD WAY FARM, TRING RD, DUNSTABLE, BEDS, LU6 2JX  
WHERE WE HAVE A SELECTION OF IGOE BEDROOM FURNITURE  
AND PINE FURNITURE ON SHOW**

**To arrange our free shop at home service & view a wide range of  
samples in the comfort of your own home call:**

**FREE PHONE 0800 0850593 OR 01582 699273**

**SHOW ROOM OPEN BETWEEN 9AM-5.30PM MONDAY TO FRIDAY  
MOST MAJOR CREDIT CARDS TAKEN**



## *TMS Chauffeur*

### *Services*

Luton	£18.00
Heathrow T1,2,3	£45.00
Heathrow T4	£50.00
Gatwick	£70.00
Stansted	£60.00

**London, Theatres, Stations,  
Ports. Distance no object.**

**For a professional reliable  
service call:**

**01582 667710**

## **WILL KIMBERLEY GARDEN SERVICES**

**TEL/FAX (01442) 255784**

- Grass Cutting regular or one off / lawn treatments
- Hedge cutting / Shrub trimming
- Overgrown gardens cleared
- Autumn / Winter tidy ups
- Fences erected and repaired
- Fruit tree pruning / tree lopping
- Leaf clearing / gutters cleared
- Patio / deck cleaning

**IN FACT ANY JOB IN  
THE GARDEN**

### ***Susan Todhunter FCCA***

offers a friendly and personalised comprehensive service covering:

**Accountancy - Taxation**

**- Self Assessment -**

for

**- Individuals -**

**- Partnerships -**

**- Limited Companies -**

Advice from a qualified professional at an affordable fee

For a free initial consultation at your home or workplace, phone:

**01908 508181 or 01234 290333**

Bayler Wood Associates Ltd  
Chartered Certified Accountants

## **DELLS**

UPVC WINDOWS  
CONSERVATORIES

FACIAS and SOFFITS

**RING ANDY - 01442 826359**

**MOBILE - 0795 738 6239**

FREE ADVICE • QUOTATIONS

## **TV VIDEO AUDIO REPAIRS**

**BOB SMITH**

**EATON BRAY 221722**

**ALL WORK GUARANTEED  
FREE ESTIMATES**

**GARDEN  
EATON BRAY  
SCENE**

THE RYE  
EATON BRAY  
BEDS LU6 2BQ

TEL 01525 220104  
FAX 01525 222077

**GARDEN SCENE FOR:**

TOP QUALITY GARDEN PLANTS,  
TERRACOTTA AND GLAZED POTS,  
COMPOSTS AND FERTILIZERS,  
GARDEN ORNAMENTS AND  
SO MUCH MUCH MORE!"

*\* ALL TOP QUALITY  
AT LOWEST PRICES \**



OPEN 7 DAYS  
MON- SAT 9 - 5.30  
SUN 10 - 4.30

JOIN OUR FREE  
GARDENERS REWARD CLUB  
FOR EVEN BETTER VALUE

# James B Chadburn

Fine Antique clocks & Barometers  
Specialist in repairs & restorations

Movements / Casework / Silvering.  
Clock & Barometer parts sold.  
Valuations & Clock finding service  
Quality clocks & Barometers  
Bought & sold.



Telephone 01525 221165 Mobile 07790 000629  
E-mail: [jbchadburn@lineone.net](mailto:jbchadburn@lineone.net)

# MISTY DOUBLE GLAZING ?

DID YOU KNOW WE CAN REPLACE JUST THE GLASS PANEL

NOT THE WHOLE WINDOW FRAME

MAKING THE REPAIR MUCH, MUCH CHEAPER!

WE CAN EVEN TRANSFORM THE LOOK OF YOUR HOUSE BY CHANGING  
THE PLAIN GLASS PANELS TO LEADED LIGHT OR WHITE GEORGIAN PANELS  
WITHOUT REPLACING THE WINDOW FRAMES.

WE ALSO REPLACE BROKEN GLASS • HANDLES • HINGES & LOCKS.

FOR A FREE NO OBLIGATION QUOTATION CALL:

## QUALITY GLAZING SERVICES

01525 876808 (OFFICE)

07850 734517 (MOBILE)



# REVIVE

## HOLISTIC THERAPY

Holistic therapies are concerned with treatment through massage, manipulation and relaxation. They are not only treatments for one physical ailment or one part of the body, but also treat the person as a whole.

Ideal for today's stressful lifestyles.

Treatments include:

Aromatherapy Massage

Indian Head Massage

Reflexology

Reiki

Crystal Therapy

Also... Manicure / Pedicure

New: Reiki courses are now available. Why not learn how to become a Reiki Master so that you can help yourself as well as others.

Vouchers available, so why not treat a loved one or friend as well as yourself.

For more information or to book an appointment call Kate Meredith IHHT, RGN, on 01525221380

*Established over 10 Years*

# Duncan Tomblin TREE SURGEON

Forestry Contractor • Tree Felling  
Crown Reduction & Thinnings  
Deadwooding • Hedge Cutting  
Stump Grinding • Site Clearance  
Private Agriculture Fencing Contractor  
Chipper & Stump Grinding Hire  
Digger Hire

FULL PUBLIC LIABILITY INSURANCE  
FREE ESTIMATES

*'The Best Choice For Your Tree'*

**TEL: (01525) 221946**

MOBILE: (07802) 410728

12 Greenways, Eaton Bray, Beds

## HOLIDAY LETS

### **Luxury Holiday let in Orlando - Florida**

Privately owned luxury 5 bedroom villa with own screened pool just 15 minutes from Walt Disney World Resort.

Sleeps up to 12 people comfortably. The villa is furnished & fully equipped to a high standard.

\*5 Bedrooms \*3 Bathrooms \*Dining Room  
\*Kitchen \*Sitting Room \*Screened Pool Area  
\*Air Conditioning \*Private Pool (heated on request)  
\*Double Garage \*Washer / Dryer  
\*Dishwasher \*Microwave \*Kitchenware  
\*Linen \*TV \*Telephone \*Cot & High Chair

Located in a residential community just off US192 (junction 27) which means that most of Central Florida's theme parks and attractions can be reached within 15 - 20 minutes. Also numerous Championship Golf Courses local.

There is a supermarket, pizza delivery shop, bank, post office & petrol station all conveniently located within the development.

For Further Information Please Contact Us On

**01525 220879**

Graham & Karen Howard

### **Sheplegh Court Nr Dartmouth, South Devon**

Lovely two bedroomed apartment in country house set in 30 acres of gardens, woods and parkland. Facilities available include:

- Heated outdoor swimming pool with sun terrace and barbecue area (summer only)
- Conservatory overlooking the gardens and parklands
- All weather tennis court.
- Snooker room with full size table
- Small indoor pool, jacuzzi and sauna

Secluded position on outskirts of award winning village yet within 3 miles of beaches and Dartmouth Golf and Country Club. Available for weekly letting or for three plus days out of season.

**For further details please telephone  
01525 220957 evenings and  
weekends**

### **Marbella - Holiday Let**

Five star **Designer Furnished** luxurious apartments located literally on the beach in San Pedro, just 2 km from Puerto Banus.

#### **Designer Furnishings**

**Luxury Kitchens with Granite Worktops  
Marbled Bathrooms with Jacuzzi Bath  
Award Winning Landscaped Gardens  
Swimming Pool and Waterfalls**

#### **Video Entry System**

**Underground Parking with Lift  
Large Terraces and Garden Area  
Choice of 2 bed ground floor and**

#### **NEW for 2005**

**A brand new 3 bed first floor apartment**

To view internal photographs and for more information please see

<http://bahiabeach.mysite.freemove.com>

or feel free to contact us on

**01525 222753**

**Michelle and Kevin Reddington**

### **Costa Calida Spain Isla Plana**

Isla Plana is a small village 2km across the bay from Puerto de Mazarron

The village has several bars & restaurants, a village shop, bakers, butchers & pharmacy.

Mazarron is a fascinating old town backed by rugged landscape of mountains. The town has a good selection of shops, restaurants & Sunday market.

#### **Luxury beach front apartment**

with stunning views across the bay from large private gated terrace, 2 bed, 2 bathrooms, all mod cons, air con & heating.

Large communal pool, separate children's pool & play area. Tennis court, video entry, underground parking.

Rent £250-£550 per week

Murcia airport 1 hour

**Contact Mandy 01525 874803**

## HOLIDAY LETS

### **Amathus Area, Limassol, Cyprus**

**3-Bedroom House**, Lounge, Kitchen, Guest WC, A/C split unit, 3 double bedrooms, Bathroom, EXCELLENT CONDITION.

1 min from beach & shops, 10 mins to Amathusia & Limassol. Amathus Horse Riding Centre offers free horse riding.

**Booking from Sept 2007. C£450 PER WEEK.**

**CONTACT: D. Patatini, 9 Aiantos, Ayios Tychonas, 4521, Limassol, Cyprus.**

**E-MAIL: [dpat9@hotmail.com](mailto:dpat9@hotmail.com)**

### **Menorca – Cala'n Porter**

Light, airy, comfortably furnished apartment; balconies front and rear; great location centre village; sleeps 4; one double bedroom, one twin-bedded room; large communal pool in private grounds.

**Tel: 01525 852368/07914 011241  
for brochure/details**

### **Langham Barns**

Fancy a break in Lincolnshire?

Barns newly converted to high standard

In rural location, 3 miles from coast

**Tel 01507 490313**

**Mob 07717452610**

### **Anarita Near Paphos Cyprus**

Recently built luxury villa, 10 mins from Paphos town and 10 mins from airport

- Three double/twin bedrooms
- Two bathrooms
- Fully fitted kitchen
- Air-con
- Lounge/diner with TV/DVD player
- Own pool and garden

Beautifully situated overlooking sea and short walk into Anarita village which has taverna, supermarket and bar.

Rates vary according to season (£350-£750). Available all year.

**Contact Nicky 07980735955 or  
email [nicky.corehealth@virgin.net](mailto:nicky.corehealth@virgin.net)**

## EXCHANGE & MART

### **FOR SALE**

**CHAIR BED** – Grey patterned  
Converts to small single bed, good condition -**£15**

**BED SETTEE** – Cream  
Opens to comfortable 4' wide bed - **£55**.  
Can deliver.

### **PURE SILK CURTAINS**

(lined and interlined)

Raspberry pink with bead features – 2 pairs, suitable for windows 5' wide by approx 4' drop. Perfect condition - **£30** per pair or **£50** for both

**Tel: 01442 842214 (Dagnall)**

### **MARQUEE FOR HIRE**

8 metres x 4 metres

Commercial Grade White PE Tarpaulin

Weddings, Promotional Events, Fetes

Hire costs include site visit, delivery, erection, dismantling and collection

Exhibition stands, leaflet dispensers and signage also available for hire

**Tel: 01582 873409**

### **FOR SALE**

**White German Shepherd Puppies**, Long and Medium Coats, KC Registered, 3

Generation Pedigree, Wormed, 1st Vaccination and Vet Checked, Well Socialised, Both Parents Have Excellent Temperaments, Pictures, Parents Pedigrees can be emailed.

**£550 Tel No: 01525 222467 or 07971**

**540307 Email: [allycath1@aol.com](mailto:allycath1@aol.com)**

### **FOR SALE**

**Garden Sun Dial**. brought from a garden centre for £95. The dial is Brass, with an engraved concrete plinth/pedestal **£37 ono**.

Good condition, please call for more details (happy to email a picture).

**Tel 01525 220855**



# Act, sing and dance at Stagecoach



**AN HOUR TO ACT**



**AN HOUR TO DANCE**



**AN HOUR TO SING**

**S**TAGECOACH TEACHES children to act, sing and dance. We help them to stand well and move freely, express themselves more clearly, gain confidence and self-esteem—skills they learn for life. Schools open for three

hours at weekends during normal term time.

There is no audition—students need only to be enthusiastic and aged between 4 and 16.

For a Prospectus and more details please contact Wendy

Ashman at Stagecoach  
Leighton Buzzard on  
01525 222715



**STAGECOACH**  
THEATRE ARTS SCHOOLS

[www.stagecoach.co.uk](http://www.stagecoach.co.uk)



**J. LYDON  
and Sons**

Building & Ground Work  
Contractors

Mini Digger &  
Dumper Hire

With or without driver



**FREE Estimates**

Phone: 01525 877234

Mobile: 07855 321781

Email: lydonj6@aol.com

**Thinking about a new  
lawn, patio or complete  
garden makeover?**

**For a free, no obligation  
quote phone:**



**Tel: 01296 660628  
Mob: 07976 227785**

**Garden Design  
Lawns • Patios • Driveways**

# **Chairman's Report for Edlesborough Annual Parish Meeting**

## **19th April 07**

**The 2nd part of my report covering the period May 2006 - April 2007 following on from the 1st part printed in the June issue of Focus**

**Edlesborough Green:** The green is still the centre jewel of our Parish and continues to be used by every section of the community. The tennis club continues to flourish as does the cricket and football. I would like to take this opportunity to thank these organisations for all their good work especially with the youth of the parish. We continue to maintain all the facilities on the green to a high standard so it can be enjoyed by the whole population. St Mary's carnival continues to use the green for their very successful annual event which raises large sums of money for local good causes and we are pleased to be able to offer this venue to the carnival committee. A film company also used the roundabout for 3 days filming causing much interest in the village and also generating useful income for the parish. In response to the youths a basketball hoop has been erected on the green. Tenders are out at the moment to enable a hard surface with drainage to be laid at the base, this is proving to be a costly exercise but the council is actively pursuing this. Costs also continue to rise due to vandalism on the green, but with the support of the Police and the young people themselves it appears at the moment to be under control. The pc have taken on the maintenance of the play area in Dagnall and when the proposed play area is built in Northall this will also be maintained by the council.

**Pavilion:** The pavilion continues to be well used by the local clubs. The shower heads have been upgraded continuing the on going maintenance plan.

**Road Repairs:** We continue to report any holes or problem areas in our parish, as do our conscientious parishioners. Highways on call have been very successful and a response is usually very swift.

**Traffic Calming:** Yellow backing for all the 30 & 40mph signs, along with roundels painted on the road at all entrances to our villages have now been implemented throughout the Parish. Due to the long awaited speed review being delayed yet again, Northall Cllrs Phil & Kevin supported by the rest of the PC requested the Clerk write to Bucks CC demanding that Northall be treated as a special case for the present 40mph speed limit to be reduced to an acceptable 30mph in line with every other village on the A4146, this to be looked at separately from the speed review, we will continue to pursue this important issue. We continue to investigate all forms of traffic calming for the High Street in Edlesborough but this is proving quite a difficult task due to all the regulations involved. We continue to support our schools via the Safer Routes to Schools scheme.

**Footpaths/PPP Scheme:** The PPP representatives are Mr. & Mrs Thomas and a big thank you to them for continuing this important roll of keeping our footpaths

open. Reported repairs necessary etc., continue to be carried out by Buck CC and The Chiltern Society. If we carry out any works we are reimbursed through the PPP scheme.

**Rubbish Dumping:** When reported, Aylesbury Vale D.C. continues to react quickly, removing large items of rubbish dumped in our hedgerows and gateways. The freighter service which allows you to remove difficult to dispose of rubbish twice a year, continues to be well used, larger items can be collected from your households by AVDC for a small charge. The litter left on the green and in the two car parks continues to be a problem but thanks to several conscientious parishioners it is kept under control, your efforts are noticed and very much appreciated. We still support the Green sack scheme for the disposal of garden rubbish. These can be purchased from Sue Parker our hall caretaker & bookings clerk.

**Dog Bins:** We continue to support the dog bin emptying scheme at a cost of £4,000.00 per annum but we feel this money well spent. To be able to enjoy our open spaces without having to check where we're walking is certainly a bonus, thankfully the majority of our dog owners are responsible and caring people who make good use of this very necessary facility.

**Dagnall Recreation Ground Access Path (Gaddesden Walk):** Discussions are still taking place with safer routes to schools, BABTIE and Bucks CC with regard to the best way forward for this project. It has been proposed that a 'build out' in Dunstable Road would be the best option for a crossing but we have just been informed that it has been delayed yet again for a further year. Unfortunately this path will remain closed until a safe crossing is in operation

**S106 Agreement Northall:** At the request of Councilor Cabbage the PC wrote to Aylesbury Vale and the Developers concerned with the S106 agreement for Beacon View about the possibility of a variation of contract for the outstanding monies in this agreement. I am pleased to report that this has now been agreed by all parties and a new contract is being drawn up delegating the unspent £4,153.00 to the Northall Children's Play area. I would like to thank everyone involved with this decision which will give an added boost to this proposed facility.

**Police Matters:** What a significant difference our PCSO Jackie Dobson has made to our community. She has brought a friendly face and a visible Police presence to our villages. The £7,000 funded by the Parish has proved to be money well spent. I will not at this point enlarge on what the PCSO has achieved as Jackie has prepared a report to be read to this meeting. I am pleased to report that an additional PCSO has been assigned to this area and from May both PCSO's will be funded by central government, with no extra contribution from the Parish. Our Community Police Officer PC Sarah Astley joined us during the year and what an impact she has already made to problem areas in our Parish, providing that all important police back up for the PCSO. Your efforts ladies on our behalf are really appreciated.

**Community Events:** We continued to have stalls at the Dagnall Fete and St Mary's Carnival. Cllrs Julie Ratherham and Marilyn Pryce-Jones supported by the other council members are responsible for a huge amount of work behind the scene at these events, where we received various comments on what you think we should or should not be doing as a PC on your behalf, all these suggestions are taken onboard. A problem by a disabled resident was brought to our notice at last year's carnival, with regard to drop kerbs or rather the lack of them in Edlesborough, very important for accessibility for wheelchair and pushchair uses. I am pleased to report that drop kerbs will be installed at various crossing points throughout Edlesborough this summer, enabling unaccompanied disabled residents to have access to all areas of the village. This surely confirms the usefulness and necessity of the Councils presence at these functions.

In conclusion as you are all aware Council elections will be taking place in May and it is with sadness have to report that our District Councilor Pauline Hannelly has decided not to stand at the forthcoming election. For the past 20 years Pauline has always been a very accessible councilor and was always pleased to champion any parishioner's problems at District level. Our monthly meetings will not be the same without her input, Pauline we wish you well in your retirement you will be sorely missed.

It is with regret I must also report that Cllr Steve Munday, Edlesborough Ward, has decided not to stand for re-election. Steve has served this Parish for 16 years and during that time he has always fought tirelessly for traffic calming in Edlesborough, indeed it was Steve that first suggested putting money aside in the precept for this project. The youth of the villages have always been paramount on his agenda. So Steve you must be retiring with some satisfaction knowing the basketball hoop, one of your ideas, is now in full use and some considerable moves forward in traffic calming have taken place this past year paid for by the Parish Council. A sincere thank you for your contribution in the past and I wish you well in the future. I am pleased to report that a parishioner has shown interest in representing Edlesborough Ward on the PC and hopefully will be co-opted at the May meeting.

Due to a delay in papers reaching Aylesbury a vacancy has arisen for Dagnall Ward but I am pleased to report Karen still wishes to stand so if there is no other interested parties, Karen will also be co-opted at the May meeting.

This concludes my report.

Anne Thompson

Chairman Edlesborough Parish Council

## **NORTHALL BAPTIST CHAPEL**

### **Chapel Lane, Northall**

(just beyond the speed limit signs on the road to Leighton Buzzard)

Everyone is welcome to our Sunday worship each week between 11am and 12.30pm including tea/coffee and time to talk together  
For more information contact: Steve and Helen Orchard 01525 373106

There has been a Baptist Chapel in Northall for more than 200 years. Today we continue to seek to worship God, serve him in our daily lives and support and encourage one another in the difficult and the joyful times.

## Open Gardens 2007

Did you see it? There deep in one of the gardens was a single simple, perfect rose. It caught my eye – not literally, of course – and summed up the day for me. We had taken a simple concept, opening gardens for the public, and turned it into something beautiful with a wonderful atmosphere that can only be found when hundreds of people with a shared interest come together and enjoy themselves.

And not just that, in the process we raised ~£2,800, an increase of 20% on last year, to be shared by the MS Centre in Wendover and St Mary's Roof Fund. And, with matched giving generously offered by a family in the parish, the MS Centre will actually receive £2,800 and St Mary's Roof Fund £1,400.

But it can only happen because of the generosity of the people who open their gardens and the hard work of the helpers and people who donated their time, cakes, plants or prizes. To all of them an enormous 'Thank you'.

Did you have a favourite? For the first time this year, Garden Scene in The Rye offered a prize to "The Peoples' Choice" – your favourite garden. Approaching 100 people made their way back to Edlesborough to vote. Each garden received at least one vote and the winning garden, with over 40% of the votes cast, was 46 Moor End, owner by June Trott, – how very apt, as her husband is someone who benefits from the work of the MS Centre in Wendover. If you didn't get to see the garden there is a picture of part of it here but, in a garden full of different 'rooms', this hardly captures the magic of the place. Thanks must go to Kevin Yeomans at Garden Scene for his support of the event.

So, after just two years, it seems that our Open Gardens event is becoming a fixture in the diary for the second Sunday in June – next year that will be Sunday 8 June. The event depends on people willing to allow their gardens to be seen by the public. Gardens can be big or small, beautifully tended or 'rampant'. Without exception those who opened their gardens this year had a great day, so please consider joining them and opening your garden. Three visitors to this year's event were moved to volunteer, so please ring Gordon on 220136 and join them; and if anyone would like to volunteer to organise the event I would be pleased to open my own garden.

Finally, a big thank you to everyone who came along and supported the event. I hope you will tell your friends and that we will see you again next year.

Gordon Gray

*I understand, by the way, that the rose that caught my eye is called 'Ballerina'.*





## Letter to the Editors

*Dear Editor*

*My family has just returned home after a most enjoyable afternoon wandering around other people's gardens! The "Open Gardens" day held on Sunday 10 June was an excellent event, well organised and blessed with amazing sunshine.*

*Even my 2 small daughters, not known for their enthusiasm for walking or gardening, enjoyed running through secret paths, staring into ponds and moats, and spotting sculptures and wildlife.*

*We only managed to visit 6 of the available 9 gardens but thoroughly enjoyed those we saw, and the friendly atmosphere of so many people being out and about in the villages on a sunny Sunday afternoon.*

*I would like to thank everyone involved for their hard work in bringing us such a pleasurable event, with special mention to the team at 3&5 High Street for the delicious cream tea!*

*Kate Baldwin  
Eaton Bray*

**St. Mary's Church  
Eaton Bray**

**Open Afternoon  
Sunday 5th August  
2-5pm**

**Parish Record Books, History  
and Photographs on display  
Refreshments Available**



## QUIZ NIGHT

**Saturday 7<sup>th</sup> July  
6pm Start at Dagnall Village Hall  
Doors open at 5.45pm**

**Bring your own refreshments ...  
Opportunities for the children to  
participate ...**

**Teams of 4 – 8 Adults ...  
Prizes for the winning team ...  
Raffle ...**

**£3 per adult entry  
All proceeds to be donated to  
Dagnall Under 5's Playgroup  
Contact Michelle: 01442 842 676**

## BBQ

**TASKERS ROW  
SHELTERED HOUSING  
SCHEME, OFF THE  
GREEN, EDLESBOROUGH.**

**SATURDAY 21<sup>ST</sup> JULY  
2.30PM - 4.30PM  
£4 PER PERSON  
TO INCLUDE BBQ,  
BEVERAGE &  
DESSERT**

**ALL PROFITS TO  
'THE HORSE TRUST'  
THE HOME OF REST  
FOR HORSES, SPEEN,  
PRINCES RISBOROUGH**

# Highlights of Minutes of the Eaton Bray Annual Parish Council Meeting held on 8th May 2007 at 7.30 p.m.

Cllr Beal was elected as Chair.

Cllr Crace was elected as Vice Chair.

A resident expressed his concern that it had been decided not to allow a flagpole to be erected on Three Corners Green to fly the St. George flag, he feels that provision to fly the flag in the village is desirable.

The Chair explained that the parish council had gone through a process seeking the opinions of those who would be effected most and had listened to those residents who attended the council meeting at which the decision had been made. The overwhelming response had been against siting the flagpole on Three Corners Green. A different site, at the Coffee Tavern, is now being considered.

A letter from Andrew Selous MP, asking to use the Coffee Tavern for a constituency surgery on 22nd June 2007.

The Chairman commented with thanks, that the youth club had agreed to move their evening to Thurs. to enable the PC to meet.

Cllr Marriage signed the minutes of the GP meeting held on 12th April 2007 with the unanimous approval of those councillors who had been present.

Vehicle Activated Signs. The process of deciding sites and specifications is going well, and opinions are being sought from residents. Funding proposals are being considered and look promising with grants available from the Parish Partnership.

Mr. I. Robinson, roads advisor, will attend the next council meeting to advise on traffic control.

## **Cemetery**

It was agreed unanimously to have plot number markers on all new graves.

The grounds maintenance contractor would be asked to check the graves twice yearly and turf any newly settled graves

New cemetery fees were agreed, to commence 1st.June 2007.

All burial fees include 75 years exclusive rights.

	Parishioners of Eaton Bray	Non-Parishioners
Burials	£75.00	£300.00
Burial of ashes	£45.00	£180.00
To re-open (for 2nd Burial)	£25.00	£100.00
To place a memorial	£20.00	£ 80.00

## **Youth club:**

There is a vacancy for a youth club leader, Cllr Beal asked the councillors to circulate a notice inviting applications

## **Skateboarding facilities:**

Cllr Gallagher reports that research is on-going. The GP will meet to look at possible sites in the village.

## **Carnival stall:**

Cllr Crace reported that a stall has been booked at the 2007 carnival

Parishioners of Eaton Bray will be encouraged to give their email addresses to create a database to be used to promote Parish Council activities. A meal for two has been

offered by Cafe Masala to be used as an incentive.

## **Highlights of Minutes of the Eaton Bray Parish Council Meeting Held on 4th June 2007 at 7.30 p.m.**

### **Public forum:**

A number of residents gave accounts of their problems with recent flooding and appealed for the support of the Parish Council. Cllr. Windmill offered to chair a group of residents to present a united voice to make a claim for urgent action to be taken by the authorities.

Residents of Mill End Close expressed their concern regarding vandalism in the Conservation Area, and gave a letter with details of the damage to the council.

### **Traffic Management:**

Mr. Robinson, Traffic & Highways Consultant from Amey (Beds.CC Highways), addressed the meeting. He has been asked to look at the issue of heavy freight vehicles using roads through the area.

The use of local roads by training vehicles has been identified as a key issue although it is accepted that these are not the only cause of concern.

Mr. Robinson's suggestion is to approach the Driving Standards Agency and request that three new approved test routes be added to the two existing, to spread the load.

Mr. Robinson was asked to enquire about the procedure for introducing a Traffic Regulation Order to restrict use of local roads by vehicle weight and/or length, and report back to the council.

### **Chairman's comments & correspondence:**

A letter from Eaton Bray Lower School asking the council to consider contributing financially to the proposed nursery building.

The council felt unable to make a commitment at this time but would be prepared to consider this again, in more detail, at a later date.

A local resident addressed the council and gave an account of his and his neighbours' experiences earlier in the day when they suffered verbal and physical intimidation from a group of men, on their own property. The council expressed its concern. Cllr Marriage proposed that the Chairman writes to the Chief Constable to ask what was being done regarding these serious matters.

### **Police representative:**

PC Dady joined the meeting and gave recent crime figures. In May there were:

2 Burglaries to dwellings, 4 Burglaries to other buildings, 2 Criminal damage – other, 1 Criminal damage – motor vehicle, 1 theft from person, 2 theft – other, 2 theft of motor vehicle, 1 Other misc offence.

Speed gun training has now been given and officers will be operating in the area.

**PC Dady asked that the council help raise awareness of the problem of bogus callers and what it means to be a “No cold calling” area. All suspicious callers should be reported.**

**The public are asked to be vigilant at all times and to report anything that causes concern, to help the police tackle anti-social and criminal behaviour.**

### **Skateboarding:**

An area thought suitable for the skateboarding facilities has been identified in School Lane rec.

## Finance Committee report – Annual accounts:

The Chairman explained the proposal to grant an interest free loan of £6000 to the Coffee Tavern Trust, to be repaid at a rate of £200 per month over 30 months commencing September 2007.

## Vehicle Activated Signs (VAS):

Cllr Marriage explained that the type of equipment had been chosen and details of installation largely agreed. The received advice is that these systems could be operational in the autumn. Cllr Marriage proposed that Eaton Bray Parish Council purchases two VAS systems, one to be sited on Bower Lane at Three Corners, and one to be sited on Totternhoe Road opposite the Methodist Chapel in the Orchards area, to be ordered subject to funding being available.

Carried with two abstentions.

## Items for the July agenda to be requested no later than Mon 25th June 2007



Edlesborough Under 5's

## Staff Vacancy

**Pre-school leader – one academic year contract covering maternity leave  
Sept 2007–Aug 2008 (incl. Paid holiday)**

We are looking for a person who is keen and enthusiastic about working with children aged 2½ to 5 years old and in leading a team of 9 dedicated staff to continue to develop and ever improve the experience the children gain while at the pre-school. If you have a minimum of an NVQ level 3 qualification or equivalent in childcare and would like to join the team please contact:

**Tracey Bilbie, Leader of Edlesborough Under 5's on 07854 939226 or Alex Razak, Chair of Edlesborough Under 5's on 07946 467438 or 01525 220722 or visit our website: [www.edlesboroughunder5s.org.uk](http://www.edlesboroughunder5s.org.uk) for an application form, job description and any further information. The closing date for applications is Friday 13th July.**

## All Saints, Dagnall - Services in July 2007

Sun. 1st July	9.00 am	Eucharist
	10.30 am	Morning Service
	6.00 pm	Evening Service with Holy Communion
Sun. 8th July	9.00 am	Eucharist
	10.30 am	Morning Service
	10.30 am	Family Communion
Sun. 15th July	6.00 pm	Evening Service
	9.00 am	Eucharist
Sun. 23rd July	10.30 am	Family Service
	6.00 pm	Evening Prayer
	10.30 am	Songs of Praise
Sun. 30th July	9.00 am	Eucharist
	10.30 am	Morning Service
	6.00 pm	Evening Service with Holy Communion



Sunday School meets each Sunday at 10.30 am

**PUERTO BANUS  
MARBELLA  
SPAIN**



Recently built luxury 3 bedroom, 2 bathroom apartment approx 1 mile from centre of this well known Spanish marina. 45 mins easy driving from Malaga airport, served by Easyjet, Monarch etc.

Facilities include all mod cons including air-con, satellite TV, fully equipped kitchen, swimming pools, excellent clubhouse and tennis courts. Many golf courses and all weather bowling greens nearby. Climate makes this ideal for holidays throughout the year. Rates vary according to season (£300 - £750)

For a brochure and details call Peter or Celia on **01525 220173** or email [hpkillfoyle@aol.com](mailto:hpkillfoyle@aol.com)



## **Bellows Mill**

*Attractive Accommodation  
in Idyllic Surroundings*  
**Telephone: 01525 220548**

### **a la carte Restaurant**

**Lunch 12.30 - 2.30 pm**  
**Thursday to Sunday**

**Dinner 7 - 9 pm**  
**Wednesday to Saturday**

**Booking Essential**  
**Telephone 01525 229649**

**Email: [reservations@bellowsmill.co.uk](mailto:reservations@bellowsmill.co.uk)**  
**Website: [www.bellowsmill.co.uk](http://www.bellowsmill.co.uk)**

*Surgery Now open 7 Days a week*

*HPC Registered*  
**CHIROPODIST & PODIATRIST**

*Est. 1992*  
**Johnstons Ltd**  
*23 Upper George Street Luton LU1 2RD*

*Telephone for appointment*  
**07981 749038**

*Central Luton surgery & home visits locally*

## **R.J.O'CONNELL BUILDING SERVICES**

**EXTENSIONS, PATIOS,  
DRIVEWAYS, ROOF REPAIRS  
AND PROFESSIONAL  
DECORATING SERVICE**

**TEL: 01296 681323**  
**MOB: 07855 236726**

*Painting/Decorating Curtain Rails  
Kitchen Fitting Tiling Shelving/Flat Packs*

**YOU need LITTLE JOBS if**



Shelves scare you, flat pack frustrates you  
or mowing doesn't move you,  
you need someone to **Do It for You**

For your General  
Home Maintenance needs

**Contact Carl Bird on 01582 703039  
or Mobile 07773 230055**

*Floor Laying Gutter Cleaning Fencing  
Loft Boarding Gardening etc.*





## Eaton Bray WI Report

The vice president took the chair at our June meeting, and apologies were received from our president who was unable to come along due to illness. The members expressed their best wishes for a speedy recovery.

Our business consisted of finalising arrangements for our summer outing in August, and planning a coffee morning to be held in July. The proceeds from this being part of our continuing support for the refurbishment of Eaton Bray village hall. There are a number of social outings and activities taking place through out the summer months. Our guest speaker, Lorna Salmon, gave us an interesting humorous talk about '50 Years on the Fiddle'.

Lorna took us back to her childhood in Edinburgh, when at the age of 12 she took up playing the violin. Her father gave her the first full size violin, and mother had visions of Lorna becoming a concert violinist. Her parents were very strict and ensured, that violin practice took priority over any other childhood activities. It was under the tutorship of her teacher, a stickler for practice, that Lorna was introduced to the wonderful world of classical music. Lorna's father had a knack of volunteering her to play at local events that were usually Scottish dancing evenings. Her career progressed and reached its pinnacle when she played at the Edinburgh Festival, but alas never became that concert violinist her mother dreamed of.

Lorna's career was in teaching children the violin, until she developed a genetic problem and lost her sight, thus ending her teaching career. However Lorna still has a wide musical repertoire, and finished her story entertaining us with a selection of Scottish reels, songs from the shows and much more.

Our next meeting is on Monday 2nd July in Eaton Bray Village Hall at 7.30pm. New members and friends are always welcome for more info. Call Sheila 221185

---

Kagando Hospital  
Postbag  
Kasese  
Uganda  
19 May 2007

Dear Members of the Parish of Eaton Bray with Edlesborough

Thank you all so much for your generosity in your fundraising last year. We really appreciate all your efforts in helping to raise money to improve the facilities at Kagando Hospital.

During 2006, you raised over £5,000, which still amazes me, and we are all so grateful. Over the past year we have been able to spend some of it, and are already feeling the benefits. We are still waiting for other pieces of equipment to come, and have finally arranged what the rest of the money is to be spent on.

So far we have used the money to:

- Complete a resuscitation cupboard on the Surgical Ward – as you are well

aware it is vital to have resuscitation facilities on a ward. When making a cupboard we were able to find much of the equipment required in stores, but we used some of the money to purchase things that were not there – this included a suction pump (to clear secretions from the lungs, the cupboard and a sterile drum for gauze).

- We've set up a more intensive care area to monitor and treat poorly patients. The area has already been a huge help to many patients. It really helps the nurses and doctors to care for their patients, and you can notice a difference in the care and what they are able to do. The intensive care area now includes:
  - An oxygen concentrator
  - A machine to monitor the amount of oxygen in a patient's blood
  - We have ordered, and are waiting for, a machine to monitor a patient's blood pressure.
- We have built a path between the Surgical Ward and Physiotherapy, which also links up the Leprosy and our Fistula Ward to the Surgical Wards. So many of the staff have commented on what a difference the path is making. It is really helping us, especially in transferring patients so that they can be treated in the most appropriate place.
- Our electricity is provided by hydroelectric. When there is a fault with this, or the water level is too low, we have problems with power. A generator is then used, but that too is old, it breaks down and is inefficient in its use of fuel. £1,000 of the money you raised will be going towards a fund to purchase a new generator.
- We will also be purchasing and installing an inverter system in the Surgical Ward. This is where batteries are put on the ward and wired to sockets. When the power goes off it automatically switches to the batteries so that things like oxygen concentrators and lights can continue working
- The rest of the money will be used to renovate the Operating Theatre area. This is currently quite small, it has two theatres and an area where patients can be assessed, put to recover after their operations, wait to go into theatre, or where minor operations are carried out. We are, therefore, planning to extend theatre to create a space for patients to go after they have had their operations, before they go back to the ward.

So thanks again so much for your generosity. You can see that we've been able to achieve and change an awful lot due to your generosity. Many, many people will benefit from it. And we are all so thankful to you for it.

With thanks

Rebecca Baldock

*If you would like to make a donation to the work of Kagando Hospital please get in touch with Gordon Gray, 220136.*

**Stuart Ball**

**Ceramic Wall & Floor  
Tiling Specialist**

**Over 24 yrs Experience**



**City and Guilds  
of London Institute**

**Tiles supplied or Labour Only**

**For a reliable service call  
your Local Tiler**

**Eaton Bray 229381**

**N.D.S.**

**General Building & Plumbing**

(Established over 15 years)

- Extensions - Loft & Garage conversions etc.
- Kitchens & Bathrooms fitted
- Installer of PVCu guttering, soffits & fascia boards
- Roofing • Patios & Block Paving

**Tel: 01525 221470**

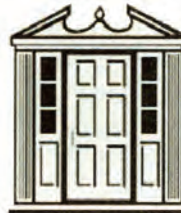
**Mobile: 07941 563424**

*FREE ESTIMATES*

...

*NO JOB TOO SMALL*

*Christopher*  
**PALLET**



*Chartered Surveyors - Valuers - Estate Agents*

Now firmly established in the villages of Eaton Bray & Edlesborough, Christopher Pallet is independently owned and run by Branch partners Colin & Linda who offer a friendly, professional, caring approach to the often stressful process of house moving.

3 Summerleys,  
Edlesborough, LU6 2HR  
Tel: 01525 222333

[www.christopherpallet.com](http://www.christopherpallet.com)

www. **DRIVESTYLE VANS** .co.uk

Now you can buy our used vans directly via our website.



# LOW COST VAN & TRUCK HIRE

You Can't  Our Vans

**Dunstable**  
London Road  
01582 600465  
LU6 3DH

**Milton Keynes**  
Wolverton Railway Station  
01908 319777  
MK12 STN

**Flitwick**  
High Street  
01525 715000  
MK45 1DU

## SEW SOFT interiors



- ❖ Handmade Curtains and Valences
- ❖ Roman, Venetian, Vertical and Roller blinds, Cushions and Upholstery
- ❖ Tracks and Poles
- ❖ Everything beautifully made and fitted to the highest standards
- ❖ Exceptional personal service in your home, taking care of all the details, reducing your stress
- ❖ You can use your own or choose from a range of the latest fabrics as well as the more traditional favourites

Call me  
**Sue Hawkins on Whipsnade**  
**(01582) 873358**

### A.P Welding

**Motor Repairs & Welding Services**

Free collection & delivery

cambelts, diesel, petrol

MOT's arranged

established over 20 yrs

Unit 6

81 Leighton Road

Stanbridge, nr

Leighton Buzzard

call

**01525 211707**

**07986033428**



### FLORIST

*Inspirations  
by Christine*

Bouquets, Floral Arrangements & Sympathy Tributes at competitive prices. Local Delivery

For a truly personal service contact me on

Christine 07801 844885





## DIGITAL & ANALOGUE

TV & FM Radio Aerials  
Satellite Installations  
Extra TV & Satellite Points

**FREE ESTIMATES**

**☎ 01525 852912**

**☎ 07710 429678**

## HAT TRICKS

*Weddings • Ascot • Special Occasions  
Hats to Hire • Hats to Buy*

*Your own hat trimmed  
to co-ordinate with your outfit.*

**Telephone 01582 873822**



## WESTROPE BROS.

**LAWN MOWER SERVICES**

*ALL TYPES GARDEN MOWERS SERVICED*

**THE RYE, EATON BRAY**

Tel: Eaton Bray 220587

## RD ELECTRICAL

**Specialising in all types of Electrical and Air  
Conditioning installations including**

- LED Lighting – indoor and Outdoor
  - Garden & Patio lighting
- Scene setting – programmable dimmers
  - Re-wires
  - Security Lighting
- Kitchen and Bathroom specialist lighting & wiring
  - Testing and inspection
- Air conditioning throughout your home

**FULLY INSURED AND PART P QUALIFIED  
NAPIT Registered.**

**Call Richard Ellison on 07932 759680  
or 01525 221475**

*116 High St, Edlesborough, Bucks, LU6 2ER*



# MOT TEST CENTRE

**ROEBUCK GARAGE**  
HIGH STREET  
**EATON BRAY**  
**220385**

## McTimoney CHIROPRACTIC



Margie Craib BSc BHSI DC AMC MMCA  
Human and Animal Treatments

Ashridge Farm, Ringshall, Berkhamsted, Herts HP4 1ND  
Telephone: (01442) 842729

General Chiropractic Council Registration No. 293



## Moren Associates Limited

Newsletter Creation & Editing  
Book Typesetting  
Presentations  
Typing  
Document Reformatting  
Spreadsheets  
Adverts

Poster, Flyer & Leaflet Creation  
Basic Web Creation/Maintenance  
and more...

**Tel: 01525 229695**

Email: [enquiries@morenassociates.co.uk](mailto:enquiries@morenassociates.co.uk)

**[www.morenassociates.co.uk](http://www.morenassociates.co.uk)**

## ADRIENNE'S PRIVATE HIRE

Call for a **FREE** quotation  
*Book early to avoid disappointment*  
*Very competitive prices*

Airport Transfers  
& Private Hire

**07980 039715**

*Our executive Cars, 6 seater Minibuses and  
lady driver are all available*



## GRASS ROOTS

GARDEN MAINTENANCE

*Including*

TREE SURGERY  
SELECTION, SUPPLY &  
PLANTING OF TREES,  
SHRUBS & HEDGES.

(Fully insured)

Tel: BRIAN McMAHON  
NCH (Arb)

EATON BRAY 221960



**Rose  
Cottage  
Interiors**  
*for Quality  
Hand Finished  
Curtains*

Soft Furnishing, Interior Design  
& Upholstery Service  
*Fabrics available*

Handmade Curtain Specialist  
Swags & Tails ● Pelmets ●  
Valances ● Tie-Backs  
*Clients own fabric welcome*

Jane Euston • Rose Cottage  
Northall Road • Eaton Bray  
Tel/Fax: 01525 221034

*THE COMPLETE BUILDING SERVICE*

**S.M. REILLY & SON**

**Established 1987**

**GENERAL BUILDERS**

*Extension Specialists*

**Tel: 01525 221740**

**Mobile: 07970 637511**

Plastic Fascia & Soffit – Double Glazing  
Windows – Doors - Conservatories  
Decorating - Drives - Porches  
Barn conversions - Roofing



**Tel**  
**01525 222145**  
**Mobile**  
**07971 559185**

# Lee Hutt

## Heating and Plumbing Services

**FREE ESTIMATES GIVEN**  
**NO CALL OUT CHARGE**  
**ALL WORK UNDERTAKEN**  
**INSTALLATION, REPAIRS**  
**NO JOB TOO SMALL**  
**DOMESTIC & COMMERCIAL**

## **J.M.C. PEST CONTROL**

Wasps, Ants, Fleas, Cockroaches  
Flies, Rats or Mice dealt with  
professionally and efficiently.

All work guaranteed

Unbeatable Service • Prompt & Discreet  
Very Competitive Prices.

Wasp Nest £39 • Ants from £45

Mobile: 07973 407027

Business: 01582 471766

## **St Judes Clinic**

26 Lake Street, Leighton Buzzard  
Beds LU7 1RX

**Physiotherapists**

**Chiropodist, Podiatrist**

**Reflexologist, Acupuncturist**

**Women's Health Service**

**Your local health Professionals**

Practice Principal

Moira D'Arcy MCSP

Tel: 01525 377751

Member of  
The Organisation of  
Chartered  
Physiotherapists in  
Private Practice



**G & J Groundwork**



**Ring Garry**

**01582 477568**

**Mobile**

**07949 118011**

**Fence Panels • Blockpaving**  
**Shingle Drives • Paths • Slabs**  
**Steps • Gardenwalls**  
**New Patios • Relaying**  
**Soak Aways • Drainage**  
**Free estimates or advice**  
**References**

# Trading Faces



*Unisex  
Hair & Beauty Salon  
Open 11am til Late  
Call Linda, Sophie or Kelly  
on 01525 229111*

**G.R. Davis** LCG

Honeywick Works, Eaton Bray  
**Cabinet Maker • Carpenter • Joiner**

House Interiors

Handmade Kitchens

Can also supply and fit Crown Imperial  
kitchens, wardrobes and desks

Home: 01582 600086

Mobile: 07759 856566

## D & E HINES

**High-Class Butchers**

**Quality Beef, Pork & Lamb**

**Grade A Poultry**

**BBQ & Sausage Speciality**

*Renowned for 'Bunkers Sausages'*

**Telephone: 01525 220413**

## CLEANING SERVICES

**- GREAT OUTDOORS & IN -**

*THE LOCAL COMPANY THAT CAN CARRY OUT  
ALL OF YOUR CLEANING NEEDS!*

### **PRESSURE WASHING**

- BLOCK PAVING & PATTERN  
IMPRINTED CONCRETE (PIC)  
REFURBISHED
- DRIVEWAYS/PATIOS/PATHS
- WALLS / FENCES
- CONSERVATORIES - HAND  
CLEANED (INSIDE / OUT)
- GRAFFITI REMOVAL

### **INTERIOR CLEANING**

- OFFICES & HOUSES
- BUILDERS CLEANS
- PRE - POST LET
- CARPETS & UPHOLSTERY  
(ALL STAFF PROCHEM TRAINED)
- HARD FLOORS  
REFURBISHED

**0800 298 5883**

**FOR MORE INFORMATION VIEW OUR WEBSITE**

**[www.greatoutdoorsandin.co.uk](http://www.greatoutdoorsandin.co.uk)**

**37 Oldhill, SW Dunstable**



## **Eaton Bray Lions A.F.C. End of Season Awards 2007**

On Saturday 19th May players and parents of the 9 teams from E B Lions AFC gathered in the hall at Edlesborough School for their annual end of season awards ceremony. All the players received a trophy in recognition of their contribution and hard work and each team manager nominated players for the special individual awards of “Most Improved Player of the Year” and “Manager’s Player of the Year”. The players in each team voted for their “Player of the Year” from amongst their teammates. The club would like to thank Dave Jones for doing such a great job as “Master of Ceremonies” and also Edlesborough School for kindly allowing us to make use of their premises and facilities.

### **League Results**

Please note that the U7, U11 and U13 Girls teams were all playing in leagues against teams a year older than themselves.

Under 7’s (Whites)	9th in Division 2 (U8) of Chiltern Junior Sevens League
Under 8’s (Reds)	10th in Division 1 of the Chiltern Junior Sevens League
Under 9’s	3rd in Division 3 of the Chiltern Junior Sevens League
Under 10’s (Reds)	8th in Division 2 of the Chiltern Junior Sevens League
Under 10’s (Whites)	8th in Division 3 of the Chiltern Junior Sevens League
Under 13 Girls	9th in Division 1 (U14) of Chiltern Junior Sevens League
Under 11’s	5th in Division 1 (U12) of South Beds Saturday League
Under 13 Boys	8th in Division 5 of the Chiltern Youth League
Under 15’s	8th in Division 5 of the Chiltern Youth League

### **Player Awards**

	<b>Players’ Player of the Year</b>	<b>Manager’s Player of the Year</b>	<b>Most Improved Player</b>
<b>U7</b>	George Oliver	Dax Roe	Luke Priestley
<b>U8</b>	Dylan Karavadra	Jack Cook	James Pratt
<b>U9</b>	Neel Slatter	Aarin Johnson	Mason Ashby
<b>U10 (reds)</b>	Charlie Slater	Matt Glover	Ivan Brodrick
<b>U10 (whites)</b>	Scotty Mercer	Jacob Knappitt	James Tate
<b>U11</b>	Jake Higgs	Declan Tomlinson	James Patriaco
<b>U13 (girls)</b>	Milly Abdullah	Tamzin Mead	Kim Squire
<b>U13 (boys)</b>	James Thiel	Lee Cavendish	Matt Audouard
<b>U15</b>	Gareth Hemming	Gareth Hemming	Adam Lancefield

Will Sanders and Declan Tomlinson received special awards for 5 years of continuous play for the club. James Pearce received a special award for scoring 150 competitive goals in only 4 seasons of play – well done!

Besides watching the presentation of the awards we all enjoyed a barbecue lunch before returning to the hall to watch the FA Cup Final projected onto a big screen. Despite several Manchester United supporters sporting T-shirts flaunting their Premiership Champions status it was the Chelsea fans who came away smiling! To

make use of a couple of football clichés – our club chairman was “over the moon” and our vice-chairman was “sick as a parrot”.

We bid farewell to our two trail-blazing teams this year. After six seasons of competitive play, our senior team, the U15's, will not be playing next season. They were runners up in the Watford Friendly League in 2002/3 but will be best remembered for their reputation as good sportsmen. They were Fair Play winners at a football festival in 2004, won the Chiltern Youth League Sporting Trophy for the 2004/5 season and have set a wonderful example for the junior teams to follow. The U13 girls team (our first girls' team) will also be leaving us after two seasons, but next year we shall have two new girls teams at U10 and U12. A new team at U7 will bring our numbers up to 10 teams and we look forward to the next season.

For more information about the club please access our website at [www.eblions.co.uk](http://www.eblions.co.uk).

Liz Coates, Press Officer – EB Lions AFC

**Eaton Bray  
Parish Council Meetings**

1st Monday of every month

7.30pm The Coffee Tavern

Next Meeting: Mon 2nd July 2007

**WANTED**

**Need to clear out some old toys?  
Edlesborough Under 5's Pre-school  
would love to make use of them.**

**We are in need of the following:  
Small cars & lorries, large diggers &  
trucks, dolls clothes & office equipment  
e.g. wipe boards, stationery, staplers etc.**

**If you wish to donate these items, please  
contact Sue on 01525 222199, email  
[suet@thurgood2000.freeserve.co.uk](mailto:suet@thurgood2000.freeserve.co.uk)**

**GROVE FARM PYO**

Great Gap, Ivinghoe, Nr Leighton Buzzard, LU7 9DZ

Open from mid June to October

30 different varieties of fruit and  
vegetable to pick your own

Visit [www.grovefarmpyo.co.uk](http://www.grovefarmpyo.co.uk)

or ring 01296 668175 for more information



# Dagnall School

A Buckinghamshire co-educational school

For 4-7 year olds



**Ofsted 2003**

Pupils of all abilities make good progress and achieve well. Standards are consistently high in English, Mathematics and Science. The partnership with parents and the contribution of the community to pupils' learning is excellent.

**Dagnall school offers**

- small classes with high quality teaching
- a secure and caring environment where each pupil is seen to be an individual and not just one of many

Each child is encouraged to achieve to the best of their ability and to develop an eagerness to acquire knowledge and become lifelong learners.

Come and visit our friendly school, meet our lovely children and dedicated staff.



Leadership in the Community  
awarded 2005



Awarded for a third  
time in Oct 2006

Website [www.dagnall.bucks.sch.uk](http://www.dagnall.bucks.sch.uk) Tel & Fax 01442 842473

e-mail [office@dagnall.bucks.sch.uk](mailto:office@dagnall.bucks.sch.uk)

# Art & Soul

Furniture  
Interior Accessories  
Individual Gifts  
& Original Artwork

(Commissions undertaken)



41 Western Road · Tring · Herts · HP25 4BQ  
tel: 01442 822219  
[www.artandsoul-tring.co.uk](http://www.artandsoul-tring.co.uk)

## COFFEE TAVERN

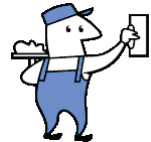
High Street, Eaton Bray

Hall for hire suitable for  
approximately 50 people with  
kitchen facilities available.

Also two smaller rooms ideal  
for committee meetings

FOR BOOKINGS:  
PHONE SYLVIA HIGNELL  
ON 01525 220891

# Absolutely Plastered



DOMESTIC/COMMERCIAL, CLEAN AND RELIABLE SERVICE,  
FREE ESTIMATES, FRIENDLY ADVICE

- \* Plastering & Coving
- \* Floor Screeding
- \* Pebbledashing & Rendering
- \* Dry Lining
- \* Cornices & Mouldings
- \* Insurance Work Undertaken

CALL NICK CONWAY ON

Mobile: 07751 830716

Tel: 01525 221877/01442 269565

26 School Lane, Eaton Bray, Dunstable, Bedfordshire LU6 2DT



## Illustria Kennels & Kathotel

**Mick and Denise Garrod**  
Proprietors

Offer your pet a fully licensed Dog  
and Cat boarding service

Purpose-built Dog kennels

Individual Cat chalets with  
outdoor exercise runs

All in pleasant country surroundings

**WELLHEAD BUNGALOWS,**  
**TRING ROAD,**  
**DUNSTABLE,**  
**BEDS LU6 2JU**  
**TELEPHONE:**  
**(01582) 665343**



## Neil Hodson Associates

Consulting Structural Engineers

### 24 HIGH ST TRING

OFFER A COMPREHENSIVE RANGE OF  
**PROFESSIONAL BUILDING DESIGN,**  
**ADVISORY AND DRAWING SERVICES**

From plans for domestic extensions to  
multi-storey offices, commercial  
buildings and factories.

Structural surveys, site surveying,  
advice on building defects and  
Feasibility Studies

Planning Applications and Building  
Regulation Consents obtained.

**Tel 01442 890894 OR**  
**Edlesborough 222462**

## KEITH GRADLEY ELECTRICAL

83 High Street, Eaton Bray  
Tel: Eaton Bray 222303  
Mobile: 07976 640869

For all Domestic, Commercial and  
Industrial Wiring and Plumbing  
Storage Heaters, Showers etc.  
Security Systems Installed  
Test and Inspections  
Free Estimates and Advice

## ALAN BARNARD BUILDING REPAIRS

**40** ESTABLISHED 1967 **40**  
**NO JOB TOO SMALL**

- ALTERATIONS & REPAIRS
- NEW KITCHENS & BATHROOMS
- BUILT IN WARDROBES
- PAINTING & DECORATING
- U.P.V.C FACIAS & SOFFITS
- WOOD OR U.P.V.C DOORS & WINDOWS
- WOODWORK

**20 WELLHEAD ROAD**  
**TOTTERNHOE, BEDS**

**01582 609726 & 07774 247658**

## YOUR LOCAL DRIVING SCHOOL

### Mini Manoeuvres

**Competitive rates • Brand new mini**  
**Patient, friendly instructor**  
**Discount for block orders**  
**Available 6 days a week • Pass plus**

**For more information call Kevin:**  
**01525221519 07931535519**  
**www.minimanoeuvres.co.uk**

## J.G.S. Metalwork

### Specialists in Gates & Gate Automation

Balustrades • Security Grilles • Railings

Curtain Rods • Weathervanes

Call in to discuss your ideas

Tel: 01525 220360 Fax: 01525 222786

High Street, Edlesborough LU6 2HS

[www.jgsmetalwork.co.uk](http://www.jgsmetalwork.co.uk)

enquiries@jgsmetalwork.co.uk

## HAND CRAFTED KITCHENS AND FURNITURE

Natural finish & painted  
featuring hi-tech accessories

### KITCHENS BATHROOMS BEDROOMS

Tables, Chairs, Dressers,  
Wardrobes etc...

All in solid wood - Oak,  
maple or reclaimed pine.



### SOLID WOOD FLOORING & DOORS



Our business has been built on design, originality, practicality  
and our experience of quality and services.

41 Western Road · Tring · Herts · HP23 4BQ

Tel: 01442 822219 [www.artandsoul-tring.co.uk](http://www.artandsoul-tring.co.uk)

## Pressing Need

### Ironing, Laundry & Dry Cleaning Service

Free Collection & Delivery

from home or office

Executive Shirt Service (Wash & Pressed)

Duvet Service (washed and dry)

For more information or to book a collection

call 01582 667332 or 07885 320042

or email: [ironout@aol.com](mailto:ironout@aol.com)



## VANSAR BLINDS

Domestic and Commercial Specialists  
In all types of Blinds and Awnings

Family Business est. since 1984

- ◆ Vertical
- ◆ Venetian
- ◆ Rollers
- ◆ Wood Weave
- ◆ Roman
- ◆ Pleated
- ◆ Wood Venetian
- ◆ Conservatory Blinds
- ◆ Patio Awnings

**For a Friendly & Reliable Service  
Free Measuring and Quotations**

Supply and Fitting  
Contact Mark Allen

on

01525-220477

07711 257473

Weddings \* Birthdays \* Anniversaries  
 Funerals \* Social Functions  
 Corporate Contracts \* Balloons  
 Fashion Jewellery \* and much more ...



For all your floral requirements

Full Teleflorist member deliveries worldwide

Opening Times

Monday – Thursday 9.00 am – 4.30 pm  
 Friday 9.00 am – 6.00 pm  
 Saturday 9.00 am – 1.00 pm  
 Sunday closed

2 High Street, Edlesborough,  
 Beds, LU6 2HS  
 Tel. 01525 221920

Email: [Sam@budsofmayflorist.co.uk](mailto:Sam@budsofmayflorist.co.uk)

**MICHAEL HUBBINS**

**TELEPHONE ENGINEER**

Installation of Telephone Extension Sockets  
 Digital, Satellite & Internet Sockets

Also Domestic Electrical Work Undertaken

**Tel: 01582 471648**

**Mobile: 0771 8834851**



**Stephen D.**

**Janes**

**Est. 1982**

**CARPENTRY, JOINERY  
 KITCHENS FITTED  
 PROPERTY MAINTENANCE  
 TELEPHONE: 01525 220649**

**PA PLUMBING**   
 Mob: 07812 085170

- Bathrooms Fitted
- Emergency Call Outs
- Burst & Leak Repairs
- Insurance Work
- All Work Guaranteed
- No Job Too Small
- Quick Reliable Service
- Free Estimates
- All General Plumbing

**01582 604070**  
 40 Westfield Road, Dunstable, LU6 1DH

**Anne Johnson D.O.**

*Registered Osteopath*

6 Moor End, Eaton Bray

**01525 221958**

**07957 250682**

Daytime and Evening  
 Appointments Available



All Osteopaths are registered with the General Osteopathic Council



**REFLEXOLOGIST**

**MARYLYN AUBURN, M.A.R.**

Leighton Road, Edlesborough

Telephone: 01525 220030

Member of the Association of Reflexologists



**Aerial & Satellite Systems**

Tel: 01525 237498

Mobile: 07970 260518



[www.digitaltelly.tv](http://www.digitaltelly.tv)



# Edlesborough School



***Choosing the most appropriate school for your child is a very important decision***

Edlesborough School is a co-educational village school for children from 4 to 11. We provide the benefits of a continuous primary education and the broad experience of a highly professional and caring staff. Our aim is to help all children achieve their maximum potential as individuals and as members of society.

***'Overall academic standards are very high'***

***'Pupils make very good progress'***

***'Pupils are very well behaved, want to learn and work hard to meet the many challenges they are given'***

(OFSTED 2003)



We would welcome the opportunity to show you round our friendly school.

Please ring Janet Hatfield on 01525 220431

Fax 01525 221819 [www.edlesborough.bucks.sch.uk](http://www.edlesborough.bucks.sch.uk)



INVESTOR IN PEOPLE

## **Christian Aid Concert!**

On Wednesday 6th June, Edlesborough School held a concert at the Eaton Bray church. It was raising money for Christian Aid. The orchestra, choir and some soloists performed. It started at 7:00pm when all the parents started flooding in. The Edlesborough School choir were on first with a jolly song, they got everybody clapping. After a while some children who used to go to Edlesborough School arrived, they also gave us a good performance. People from church were there including their choir, orchestra and a brilliant organ player!

It was soon time for the interval, drinks and biscuits were served. Raffle tickets were also on sale. All the money went to Christian aid. There were some lucky winners who were given some very nice prizes. It was getting on to 8:30pm when they started the second half. It was just as good as the first and all went well. The concert finished just after 9:00pm and everybody went home feeling proud.

£529 was made over all. It was a very good result !

---

## **Edlesborough Parish Council (including Edlesborough, Dagnall and Northall) News**

### **Village Freighter Refuse Collection 2007**

A reminder to Northall residents that The Village Freighter will be calling at the Village Hall Car Park on Wednesday 18th July between 7.30am and 11.00am

### **Edlesborough Memorial Hall**

The outside of the Memorial Hall has been re-decorated, and internal decorating is almost complete.

### **Basketball Goal surface and soakaway**

Through the efforts of the son of one of the Edlesborough Councillors funding has been granted to construct a playing surface and soakaway to enable this project to be completed.

### **Retirement of Sue and John Parker**

It was with deep regret that the Parish Council were informed of Sue and John Parker's decision to take retirement. They were both thanked for the tremendous amount of work they have done for the Parish over many years.

An advertisement is appearing in Focus and on the Village Notice Boards for replacement Booking Secretary/Caretaker/Cleaner.

### **Telephone Kiosk**

Due to continued vandalism the Telephone Kiosk at Dagnall had been taken away by BT and will not be replaced. The Parish Council have written to BT urging that it be replaced as being the only telephone kiosk in the Village.

### **'Play Around the Parishes'**

This is an activity scheme run by AVDC for children during the Summer holiday period. It will be visiting Dagnall on Monday 6th August from 2.00-4.30pm and Edlesborough Green on Friday 27th July from 2.00-4.30pm and Thursday 23rd

August from 2.00-4.30pm. There is no charge but parents are asked to remain with their children for the duration of the session.

The Parish Council have congratulated Buckinghamshire County Council on managing to break the 'Top Gear' record for road surfacing which was carried out on the A4146 in Northall complete with white lines and 'cats eyes'

Lin Sargeant – Clerk to Edlesborough Parish Council: Tel. 01525 220859

E-mail:

[parish.council.clerk@edlesborough.gov.uk](mailto:parish.council.clerk@edlesborough.gov.uk)

Website: [www.edlesborough.gov.uk](http://www.edlesborough.gov.uk)

### **Edlesborough**

### **Parish Council Meetings**

3rd Thursday of every month

7.30pm Memorial Hall

Next meeting: Thurs 19 July 2007

---

## **Eaton Bray Village Hall 4th Annual Beer Festival**

I'll be honest this is going to be a very quick report as this sad old git (G I), went on holiday for 10 days immediately after the beer festival so I have got to write this very quickly or the honourable editor will not let me get it into print (if you see this then you know, as I do, that she is a very kind person).

The weather was just as good as last year and even though we did get more beer, burgers, sausages, potatoes, fillings and other alcoholic drinks along with the soft drinks we had almost sold out of everything by late Saturday and that was after a slightly quieter Friday (we think due to England v Brazil football match).

On Saturday the weather blessed us again and by early afternoon lots of families had turned up to watch the magician and then stayed in party mood 'til late into the evening.

Our biggest thanks must be to those who turned up to enjoy the Festival, but the sacrifices the CAMRA volunteers made just to make sure that every pint was up to their usual high standard were well beyond the call of duty. They did so much tasting that they had to get a taxi home each night!

Again it is the G I volunteers who also make it possible and our thanks to all of them.

With all that effort how could we fail? The final profit is in excess of £3,400. All this will be going into the work to be carried out on the toilets in the very near future.

Thank you all for your support again. We will definitely start planning the 5th Beer Festival which will take place on the first weekend of June 2008. Don't forget!

**To more immediate things, our next event is a joint quiz with the Tennis Club which is to be held in the hall on Friday 5th October. We sold out last time so please book your places early. More details from Ross on 221411.**

P.S. Where did I go on holiday? This is really sad but I loved it. I rode 1600 miles around the UK on my motorbike visiting friends and family and enjoyed it tremendously. Makes coming back and writing this all worthwhile.

## **EATON BRAY VILLAGE HALL**

**LARGE & SMALL HALL,  
MEETING ROOM, STAGE,  
KITCHEN, LARGE CAR PARK**

**SUITABLE FOR ALL KINDS OF  
EVENTS:-**

- WEDDING RECEPTIONS
- CHILDREN'S PARTIES
- KEEP FIT, BADMINTON
- STAGE PLAYS ETC

**TELEPHONE TO BOOK  
YOUR EVENT ON:-**

**01525 222831**

**KEYS TO BE COLLECTED  
BY ARRANGEMENT**

**Gary Witts  
Approved Driving Instructor**

**01525 38 39 40**

**07748 305859**

**gary@passyourtest.org**

**www.passyourtest.org**

**Patient, friendly and reliable tuition  
Pass Plus Registered  
Motorway / Refresher Lessons available  
Member of the Driving Instructors Association**

## **DOMESTIC ELECTRICIAN**

**JOHN BRODRICK**

*FULLY QUALIFIED*

*NICEIC REGISTERED*

*FRIENDLY, PROFESSIONAL, RELIABLE*

*LOCAL SERVICE*

**01525-223081**

**07884-471565**

*CSL*

*Charvet Services Ltd*

## *Plumbing & Heating Engineer*

*40 years experience/CORGI registered*

*Full central heating installation, boiler changes, all heating repairs*

*Landlords Gas safety certificates*

*Complete plumbing service - bathroom refurbishments including tiling  
and electrical work*

*Underground drainage/blocked pipes etc.*

*Free Quotations • No call out charge • No payment until complete satisfaction*

**Telephone: 01525 221052 - Mobile: 07721 625887**



# Abbeywood

building • construction • maintenance

*"A company with high standards of workmanship providing good old fashioned service"*

**OFFICE:**  
**01525 270045**

**MOBILE:**  
**07946 857323**

- EXTENSIONS • LOFT CONVERSIONS • PATIOS
  - INTERIOR & EXTERIOR PAINTING/DECORATING
  - FITTED KITCHENS/BATHROOMS/BEDROOMS
  - ALL GENERAL BUILDING WORK
- *Free estimates and advice*
  - *Based locally with a friendly approach*
  - *Committed to giving you what you want without problems*

## All Your Storage Needs Met

Clean, Dry and Secure Warehouse  
Warehouse Storage Available for  
Short/Long Term

Archive Boxes, Liquidated  
Companies, Shredding available.  
Household & Business items

Collection & Delivery  
Boxes and other packing materials  
available if required.

## Dagnall Storage Company

Thameside Construction  
Unit 2

Grove Farm  
Ivinghoe Aston  
Beds LU7 9DF

**Tel: 01525 221062**

**Fax: 01525 221857**

Email: [dagnall@thamesideltd.co.uk](mailto:dagnall@thamesideltd.co.uk)

# Kingsley

## GARAGE DOORS

- All types & makes of door supplied & fitted
- Steel, timber, glass reinforced polyester (GRP)
- Sectional doors - an ideal solution for short driveways

*Electric operators from £300 fitted*  
Automate your existing garage door

**PROMPT REPAIR SERVICE**

**CALL 01525 221058**



## **22nd Marathon Des Sable - My story by Sally Thorne**

The conclusion to my story (part 1 was printed in the June issue of Focus)

Day 5 Stage 3: 32.3km 10 competitors at this point had dropped out, it went quite well except for the dreaded blisters this was the start of many hours of agony. Unfortunately Lee was pulled out of the race by the doctors due to the state of his feet. I also went and had my feet strapped as it was the big stage tomorrow. That night another sand storm hit and due to us all being exhausted no one held onto the tent, we heard a bang and then a yell, but we all pretended to be asleep. Next morning we awoke with the tent on top of us and Lee had been hit on the head with the pole.

Day 6/7 Stage 4: This was the big one 70.5km, 741 competitors started this stage. Jo and I stayed together and walked continuously for 26 hours with only 1 hour break at midnight to cook some dinner, but unfortunately Paul wasn't with us so no mess tin. Dinner consisted of chilli nuts and banana chips! By 9am next morning my feet felt as if they were on fire and every step was agony. We only had another 6km to finish this stage and it took us over 3 hours, but we did it. My feet by this time had had it. 3 infected toes, deep sores on the soles of my feet and I had to treat them myself as I knew if I went to the doctors for help they would have pulled me and that wasn't going to happen.

Day 8 Stage 5: 42.2km I felt really good and set off at a fast pace. Jo told me to go ahead as she needed to slow and because of the pain in my feet (I had to cut my trainers so enabling my feet to fit into them) I desperately needed to keep going. I arrived at checkpoint 1 and then 2 in very good time, but in the sand dunes it hit me, I had literally burnt myself out. I was nauseous, hallucinating, didn't really know where I was. I knew the doctors had their eye on me so just kept smiling, everyone passed me. Jo wanted to stay with me but I told her to go on, I was literally out on my feet. I never once thought of giving up but the question was how am I going to do this; with each agonising step I repeated over and over again "Pain is temporary, Achievement is forever". I eventually got to checkpoint 3 where the doctors pulled me, I had to have a full medical and be rehydrated, which cost a penalty of 30 minutes. They wanted me to retire but no way was this going to happen and I was aware I only had 3hrs to complete the last 12 km. The decision was made, I could only continue if the doctors accompanied me those last kms. It was now dark and if ever I needed the support of all the people who had sent me emails of encouragement it was now and it was those thoughts that kept me going. The only people still out in the desert were me, a doctor, two support medical vehicles and a following camel, which insisted on burping in my ear! We finally arrived at the base camp everyone was waiting and, as always, clapped the last person in, me, television cameras were also there but I was past caring, my only thoughts were why am I doing this, I must be really mad. As usual emails had arrived from home. People following me on-line had taken the trouble to send me encouraging messages and I only had one more day to go, everyone in tent 76 as usual rallied round, the support was phenomenal. That night I thought I was going

to die, the pain in my feet was so intense, it seemed I could bear it only when I was walking on them, sleep didn't come that night.

Day 9 Stage 6: 11.7km. I knew I just had to get out there and finish. Tent 76 started together but once again I had to go ahead and finish as quickly as possible. I completed the last stage in 2hrs 33min 6secs. I was presented with my medal, everyone had the same, from first to last everyone a winner.

I am just beginning to realise what I achieved, I now know I can do anything if I want it bad enough. I have pushed my body to its limit and beyond. I could not have done this without all the people who supported and sponsored me raising nearly £6,000.00 for my two charities. A massive thank you to everyone especially Dagnall Under 5's, Dagnall Church and Moira D'Arcy.

Sally

---

## Eaton Bray and Edlesborough Flooding

Some of you will know to your cost that several homes in the district were completely or partially flooded on 28th May, Bank Holiday Monday. Many others only narrowly escaped. People who have lived here for decades have seen similar problems over the years but perhaps not so severe as the 2007 flood. The situation was reported to Eaton Bray Parish Council meeting and the local MP. A small group have come together to inform and lobby the authorities concerned who may be able to take action to help prevent this from happening again.

If you would like to know more please telephone Sue Detre on 01525 222165 or email [suzandetre@googlemail.com](mailto:suzandetre@googlemail.com)



**From Grand to Grove - Entertaining South Bedfordshire**  
A History of Theatres and Cinemas in Luton, Dunstable, Leighton Buzzard and Toddington by Eddie Grabham. Price £16.99

The people of Dunstable, Leighton Buzzard and Luton have been entertained for centuries. The first purpose-built theatre opened in 1898, but the first dramatic performance can be traced back to the twelfth century.

This highly-illustrated book explores the travelling players, the fit-ups, weekly rep, variety, one-night stands, pop concerts, and the buildings they occupied. It tells the story of early film shows, small cinemas before the movies could talk, the cine-variety theatres, the super cinemas and the multiplexes. It is interesting to note how such diversity has caused South Bedfordshire to be typical of provincial areas outside the major cities and metropolitan centres for artistic endeavour as well as stage and screen entertainment.

It all adds up to a fascinating history of early enterprise, dramatic fires, bitter competition and a host of famous stars of stage and screen whose one mission was to entertain South Bedfordshire. There were times when the development of the theatres and cinemas provided drama every bit as exciting as that seen on stage or screen.

Published by The Book Castle, 12 Church Street, Dunstable, Beds LU5 4RU.  
Tel:01582 605670 Website:[www.book-castle.co.uk](http://www.book-castle.co.uk) Email: [bc@book-castle.co.uk](mailto:bc@book-castle.co.uk)



# Eaton Bray Lower School

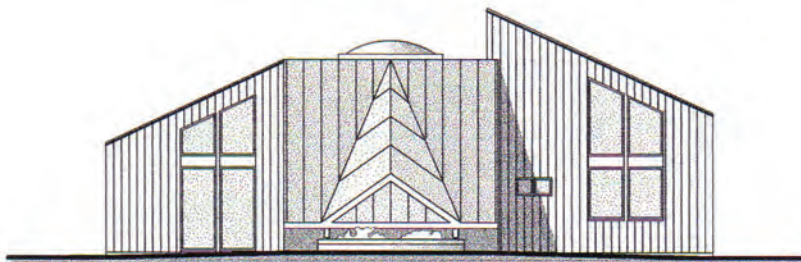
"The openness, warmth and mutual respect which permeate the School, promote a purposeful climate in which effective learning can take place" (Ofsted)

Please come and visit our friendly village school. Phone 01525 220468 or email [eaton@deal.bedfordshire.gov.uk](mailto:eaton@deal.bedfordshire.gov.uk)



**We have been awarded  
National Healthy School status**

**COMING SOON** - EBLS Nursery with extended School provision and wrap-around care in a modern, light, sustainable new building.





*“children are happy, settled and confident”*  
*“children have a strong bond with the staff team who respond to their needs appropriately”*  
*“children with any form of special need are very well supported in this group”*  
**Ofsted Nov, 2005**

*“All of the girls working at the nursery make it their interest to know each and every child and are aware of each Child’s character. Clearly the children are happy as on my duty as parent helper you hardly ever heard tears, and any arguments over sharing are quickly noticed and dissolved by excellent staffing.”* **letter from parent, 2006**

We Offer:

- A secure, child-friendly environment five mornings a week for children 2½ years to school age.
- Enclosed outdoor play area.
- Close links with local schools and the community.

To find out more, or to arrange a visit to our setting, please telephone:

**Mrs Ann Tobin (Playgroup Leader) on 07816 358 342**

## Contemplating an office move, refurbishment, fit out or purchasing new office furniture?

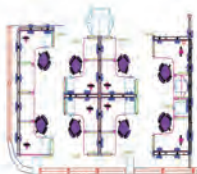
**FREE CONSULTATION ON ALL OFFICE & COMMERCIAL INTERIORS PROJECTS.**

**Independent advice** from professional consultant with over 20 years industry experience and contributor to leading interiors industry publication.

### AREA'S OF EXPERTISE INCLUDE:

- **Product Selection & Contract Negotiation**
- **Move Management Logistics**
- **Project Management**
- **Health, Safety & Disability Discrimination**
- **Pan-European Experience**
- **Published Industry Authority**

Review our profile @  
[www.knowledge-counsel.co.uk](http://www.knowledge-counsel.co.uk)  
and contact Roger Croft



**TECHNIQUE**  
CONSULTANTS (UK) LTD

Email: [roger@techniqueconsultants.co.uk](mailto:roger@techniqueconsultants.co.uk)  
Tel: 01525 222935 - Mobile: 07836 269753



## Salvation Sound. . . . .July 2007

HOME FROM HOME.....

I have just booked my holiday.....!! My Winter holiday. I've made my "home" in hotels, hospitals, boarding houses, cottages, flats and tents.!!

This is how it's done. (because You may have reserved a room in a high rise hotel on some crowded Costa' this summer. It may have sounded beautiful in the brochure but when you open the door and let yourself in, it is so plain and stark that you wonder whether it is worth what it has cost you.)

Well, make friends with your room! Familiarise yourself with it, don't unpack immediately, just sort of wander about. Don't turn on the tele' or the radio; let the silence surround you, unwind, it doesn't really matter too much if a tap is dripping or that the blind is stuck half open. You can't complain to the management that your room is not perfect, only pleasant. Remember the wallpaper you resent is just like a mirror reflecting back your own restlessness. Let the silence of the room swallow up the faults and failures and let the emptiness purify you.

Relax, open your hands and lay them palm upwards on your knees, and thank God that you are there; close your eyes, and then when you open them again you will find that the room will seem much more comfortable.

Now you are ready to unpack, have dinner and explore, fully confident that you have a little 'home' to return to; not just a room!

Remember these words, "And GOD saw all HE had created and behold it was very good".

'Blest be that spot, where cheerful guests retire.

To pause from toil, and trim their evening fire;

Blest be that abode, where want and pain repair,

And every stranger finds a ready chair.' (Oliver Goldsmith)

Every house where Love abides

And friendship is a guest,

Is surely home, and home, sweet home;

For there the heart can rest.

(Henry Van Dyke)

Here,

Time settles, quiet falls,

And tired spirits shed their langour.

They now may range carefree, secure

Within loves own immensity,

Sharing their Master's company

As healing virtue freshly springs

And past distress

Is rendered back in love's own currency.

(James Robson)

"Home is where the heart is".

### The Salvation Army, Booth Place Weekly Activities

#### Sunday

Sunday School 9.45am

Morning Service 11.00am

Evening Service 6.00pm

#### Monday

Games Night (Ages 5-8) 4.30pm

#### Wednesday

Home League (Ladies Meeting) 2.30pm

#### Thursday

Young Ladies Fellowship

(Last Thursday in every month)

#### Friday

Young People 5.00pm

(Singing, tambourine & recorder practices)



Wherever a person lives, that is "home". Homes, houses, dwellings are meant to be centres of peace; God blesses the homes of those who love and revere Him; whether you are on holiday, at a temporary home or just a 'stop-at-home!----

Lord! let us in our homes agree

This blessed peace to gain;

Unite our hearts in love to thee,

And love to all will reign.

Acts 2:46."Breaking bread from house to house, did eat their meat with gladness and singleness of heart".

---

## **Mothers' Union, Eaton Bray With Edlesborough**

At the May meeting of the M.U. held at the home of Audrey Reynolds, the members became 'Ladies who take Afternoon Tea'! As there were several birthdays to celebrate, one particularly important, it was very appropriate.

The speaker, Barbara Marriage, spoke on the social and economic aspects of straw plaiting which included our two villages. In the southeast midlands and the south east of the country, plait schools, fairs and markets drew hundreds of people to the towns, particularly to Luton which became the centre of the English hat industry. There was competition, especially from Italy, but the 1793 war against France meant supplies were cut off, and more English plait was needed.

Women and children dominated this cottage industry trade and in the season from March to May the men joined in as well – straw plait earned more than the depressed agricultural wages. Straw must be kept damp, and was held in the corner of the mouth. Different types of straw – e.g. purl, cord and brilliant need different treatment, but the most common is 'rustic' which is not good for hat making. A straw splitting device is attributed to a firm of blacksmiths – the Janes family of Edlesborough!!

There appears to have been much criticism of the plait workers by the middle classes – the ruin of the family; the children untidy, etc. but the wages paid to people in service did not compete with the pay and independence of plaiting straw.

The plaiting schools (there were two in Edlesborough) did not attempt to teach the three 'r's, only plaiting, but attempts were made to raise the educational standards, mostly by inspections by the local vicar!

Life expectancy around this time was 40 for males, and 42 for females, and by 1870 the trade began to decline owing to cheaper imports from China and Japan which were flooding the market (it seems history really does repeat itself).

People left the villages to work in the many hat factories of Dunstable and Luton. In Dunstable, Priory House was occupied by a firm called 'Munts' as a hat workshop and a two storey annex was added to the side. The 1834 records show that the workforce consisted of 350 women and 40 men. Unfortunately by 1908 the owner became bankrupt with debts of £60,000, and eventually the building was sold as a private house.

## Bee-keeping Report

May was good this year with a steady flow of rape and flower blossom honey. The hives in Cheddington however had mainly apple blossom from early discovery apples and the massive chestnut trees blossom in St Giles church cemetery. I did not see much apple blossom after the discoveries so I do not think it is going to be a good year for apples, however, I have been wrong before.

I managed to catch most of my swarms plus a couple of others. Swarming is the natural way for the bees to expand, however it is not very good for honey production. The queen leaves the hive with half of the bees full of honey for the trip, leaving behind a half empty hive (bees and honey) with an emerging virgin queen that will take three weeks before she starts laying eggs, it is not good for business. Many beekeepers use various methods of artificial swarming, they do not always work and they are a pain to do, so I just let nature take its course and hopefully catch them as they land.

There is a bit of a gap at the moment, there is blossom around and if the hives are near a field of beans it is not so bad. I will be moving several hives at the end of this month to Chalgrave near Toddington for the borage. There is a good honey flow from borage, the bees like the blue flower and they are in abundance, 25 acres I believe.

Borage honey is full of goodness, omega 3 oil, mineral salts, potassium and more. The honey has a very light test and its fluid and clear with a bluish tint of colour. The ancient Greeks used to call it the courage honey as evidently the potassium energises the adrenaline glands giving you a kind of "rush". The roman legionaries used to eat the borage seeds before battle, that is why among other things they used to "whack" every body so successfully.

Well, I will be about during the village carnival making skeps and selling some honey and candles, so I may see you there.

Let the flow continue.



*Piano, Cello &  
Theory of Music*

*Tuition from beginners to  
advanced standard.*

*Vacancies available for daytime & evening  
lessons (beginner adults very welcome).*



**Contact:**

*Jane Lodge (PGCE MUS B HONS)  
Telephone 01525 222803*

### **IS YOUR COMPUTER GIVING YOU A HEADACHE?**

For all your home or business  
computer problems

**Contact Dave at A-rama (UK) Ltd at  
The Book Castle, 12 Church Street,  
Dunstable, Bedfordshire LU5 4RU**

**Tel: 01582 605670 (9.00-17:30 Mon-Sat) or  
Mobile: 07850 777944 (9:00-21:00 Mon-Sat)**

### **Eaton Bray Village Hall 100 Club Winners May 2007**

Number	Name	Winnings
47	Heather Martin	£100
104	Sheila Wright	£25
106	John Plater	£25
27	Neil Cartwright	£25
105	Celia French	£25

Drawn on 23rd May 2007 at Eaton Bray Playgroup. Please direct any correspondence to Ross Bagni, 71 Bower Lane, Eaton Bray, Bedfordshire, LU6 1RB, Tel: 01525 221411.

## Mark Janes Contacts

**Felt Roofing - All Roofing Repairs  
and Property Maintenance**

**FREE ESTIMATES**



**t: 01442 877528**

**m: 07841 343470**

**e: mark.janes3@btinternet.com**

**Established 25 years  
Approved Contractor  
for Local Authorities**

## *Beautopia*

*"aiming to meet all your beauty needs in  
a friendly & tranquil environment"*

*Dermalogica Facials*

*Body Massage*

*Waxing*

*Manicure's & Pedicures*

*Tanning*

*Biosculpture Gel Nails*

*171 High Street*

*Berkhamsted*

*Herts, HP4 3HB*

*Please call Julie on: 01442 870065  
to request a brochure or to book an  
appointment*

*All Major credit cards accepted  
Gift Vouchers available*

## *Dominic Woolcott* Painter & Decorator



- Internal & External
- Plastering & Coving
- Insurance Work
- 20 Years Experience
- Competitive Rates

**For a professional job call:  
01525 229682 or 07747 042879**

## David John Harris



(Established 1992)

All Fencing Work • All Gates  
Paving • Patios

Driveways • Shingle  
Hedge Setting and Cutting  
Grass Cutting

Turfing Specialist  
Exterior Painting Service  
Sheds

Small Building Work  
Trees & Shrubs Supplied

**Tel/Fax: 01525 221745**

**Mobile: 07889 143713**

## Vicky Waller



**YOUR DOG DESERVES THE BEST**  
♥ PUT VICKY TO THE TEST ♥

- Trained at the London Academy of Professional Groomers to the highest City and Guilds standard
- Sympathetic and gentle handling of all dogs

**NO CAGES**

Contact Vicky

Telephone: 01525 222775

[www.dogcare.co.uk](http://www.dogcare.co.uk)

Email: [vicky@dogcare.co.uk](mailto:vicky@dogcare.co.uk)

## PROFESSIONAL CLEANING SERVICES

From a Christian, family-run company. Fully Insured.

OUR BUSINESS IS BASED ON HONESTY & SATISFACTION. A LARGE PERCENTAGE OF OUR WORK COMES FROM REFERRAL & RECOMMENDATION.

### **CARPET & UPHOLSTERY CLEANING**

FULL, FREE, NO-OBLIGATION SURVEY & QUOTATION PRIOR TO CARRYING OUT ANY CLEANING - PROVIDING SERVICE TO THE HIGHEST STANDARDS.

### **WINDOW & CONSERVATORY CLEANING**

-USING PURE WATER THROUGH WATER FED POLES.  
SAFE, MODERN, INDUSTRY APPROVED TECHNIQUES WITHOUT THE USE OF LADDERS! **MONTHLY CLEANING AVAILABLE**

### **PATIO & DRIVEWAY CLEANING**

REDUCE THE DANGERS OF SLIPPING IN THE WET OR WINTER WEATHER BY REMOVING MOSS AND OTHER DEBRIS - RESTORING COLOURS - MAKE YOUR HOUSE STAND OUT FROM THE CROWD!

**01442 250679 Murray's Cleaning Services**

*Let us take care of the cleaning so that your free time is leisure time.*

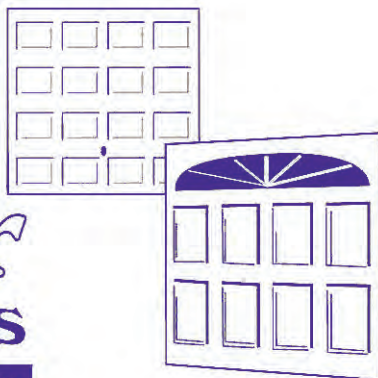
[www.murrayscleaningservices.co.uk](http://www.murrayscleaningservices.co.uk)

19 Broom Hill, Hemel Hempstead.



# Premier Garage Doors

**MANUAL & ELECTRIC**



## Quality Garage Doors

- ✓ SUPERB CHOICE OF DESIGNS IN METAL,  
WOOD AND FIBREGLASS
- ✓ ANY SIZE DOOR MADE TO YOUR REQUIREMENTS
- ✓ LARGE SELECTION OF SPARES & FAST REPAIR  
SERVICE AVAILABLE
- ✓ NEW OR EXISTING DOORS CONVERTED TO  
AUTOMATIC
- ✓ PROFESSIONALLY FITTED BY OWN EXPERT  
CRAFTSMEN
- ✓ PROMPT FREE ESTIMATES & ADVICE
- ✓ WE COVER ALL AREAS

- DIY KITS AVAILABLE
- INSURANCE WORK WELCOME
- COUNCIL APPROVED
- REMOTE CONTROL GATES ALSO  
AVAILABLE

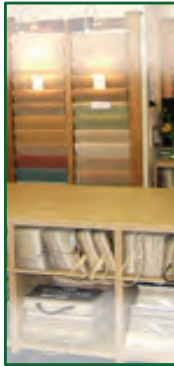
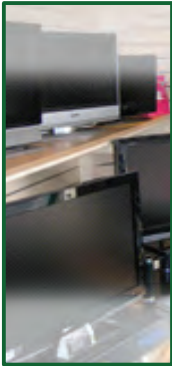
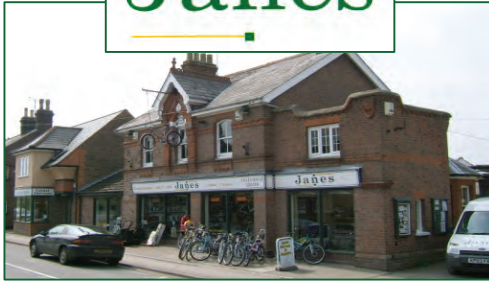
**(EST 1984)**

**UNIT 7 SPARROW HALL FARM  
LEIGHTON ROAD, EDLESBOROUGH LU6 2ES**

**01525 220212 OR 01494 773391**



# Janes



Your Local Family Business for all your  
Electrical Appliances, LCD TV's, Bikes, Carpets & Flooring  
Est. 1891

## [www.janesltd.co.uk](http://www.janesltd.co.uk)

***"We pride ourselves on our personnel service to every individual and our honest and practical advice on the products that best suit your needs".***

### **Finance Available**

Subject to Status, ask Staff for details

4-8 High Street, Edlesborough, Dunstable, Beds LU6 2HS  
Tel: 01525 220208 Fax: 01525 222802